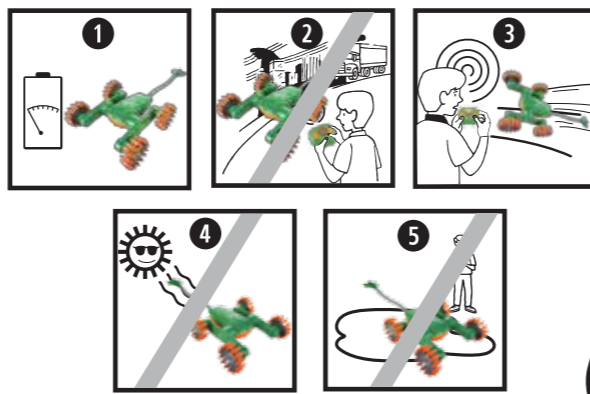


8 QUICK TIPS

- When your vehicle starts to lose power, it may lose functionality or performance. It's time for a recharge. Your vehicle's running time may change depending on your driving style and driving environment.
- Radio interference can affect your vehicle's performance. Interference can be caused by other R/C vehicles running on the same frequency, electrical wires, large buildings or CB radios. Try to stay away from these!
- Point your transmitter up, not down toward your vehicle. If your vehicle gets too far away, it won't work properly.
- Don't store your vehicle near heat or in direct sunlight. Always turn switches OFF and remove all batteries for storage.
- Don't drive your vehicle in sand or through water or snow. Do not immerse in water. If your vehicle or transmitter does get wet, wipe it with a towel, remove batteries, and allow to dry completely overnight. Replace with fresh batteries before next use.
- When exposed to an electrostatic source, the product may malfunction. To resume normal operation, remove and re-install the batteries. This should reset your vehicle and let you resume normal operation.



RECHARGEABLE BATTERY INFORMATION

- DO NOT RECHARGE THE BATTERY PACK IF IT IS HOT. ALLOW IT TO COOL BEFORE RECHARGING.
- DO NOT ATTEMPT TO USE OR CHARGE THE BATTERY PACK IF IT SHOWS SIGNS OF LEAKAGE OR CORROSION.
- DO NOT DISASSEMBLE THE BATTERY PACK.
- EXERCISE CAUTION IN HANDLING A HOT BATTERY PACK.
- IF BATTERY PACK AND/OR CHARGER ARE WET, THOROUGHLY DRY BEFORE CHARGING.
- DO NOT RECHARGE NON-RECHARGEABLE BATTERIES.
- DO NOT DISPOSE OF THE BATTERY PACK IN A FIRE.

NOTE TO ADULTS

- Recharge battery pack only under adult supervision.
- Periodically examine this product for damage to the plug, housing, or other parts that may result in the risk of fire, electric shock or injury. If the product is damaged, do not use it.
- The battery charger is not a toy.
- This battery charger is intended to be correctly oriented in a vertical or floor mount position.

BATTERY DISPOSAL

Unlike NiCd (Nickel-Cadmium) rechargeable batteries, your TYCO™ RC (NiMH) battery pack requires no special procedures or precautions for disposal. However, as with all products, you should dispose of your battery pack in an environmentally responsible and considerate manner.

BATTERY SAFETY INFORMATION

In exceptional circumstances batteries may leak fluids that can cause a chemical burn injury or ruin your product. To avoid battery leakage:

- Non-rechargeable batteries are not to be recharged.
- Rechargeable batteries are to be removed from the product before being charged.
- Rechargeable batteries are only to be charged under adult supervision.
- Do not mix alkaline, standard (carbon-zinc), or rechargeable (nickel-cadmium) batteries.
- Do not mix old and new batteries.
- Only batteries of the same or equivalent type as recommended are to be used.
- Batteries are to be inserted with the correct polarity.
- Exhausted batteries are to be removed from the product.
- The supply terminals are not to be short-circuited.
- Dispose of battery(ies) safely.
- Do not dispose of this product in a fire. The batteries inside may explode or leak.

Protect the environment by not disposing of this product with household waste (2012/19/EU). Check your local authority for recycling advice and facilities.

THIS DEVICE COMPLIES WITH PART 15 OF THE FCC RULES.

Operation is subject to the following two conditions: (1) This device may not cause harmful interference, and (2) this device must accept any interference received, including interference that may cause undesired operation.

This equipment has been tested and found to comply with the limits for a Class B digital device, pursuant to part 15 of the FCC rules. These limits are designed to provide reasonable protection against harmful interference in a residential installation. This equipment generates, uses and can radiate radio frequency energy and, if not installed and used in accordance with the instructions, may cause harmful interference to radio communications. However, there is no guarantee that interference will not occur in a particular installation. If this equipment does cause harmful interference to radio or television reception, which can be determined by turning the equipment off and on, the user is encouraged to try to correct the interference by one or more of the following measures:

- Reorient or relocate the receiving antenna.
- Increase the separation between the equipment and receiver.
- Connect the equipment into an outlet on a circuit different from that to which the receiver is connected.
- Consult the dealer or an experienced radio/TV technician for help.

This device complies with Industry Canada licence-exempt RSS standard(s). Operation is subject to the following two conditions: (1) this device may not cause interference, and (2) this device must accept any interference, including interference that may cause undesired operation of the device.

This equipment complies with FCC & Canada radiation exposure limits set forth for uncontrolled environments. This transmitter must not be co-located or operating in conjunction with any other antenna or transmitter.

NOTE: Changes or modifications not expressly approved by the manufacturer responsible for compliance could void the user's authority to operate the equipment.



INSTRUCTIONS

PLEASE KEEP THESE INSTRUCTIONS FOR FUTURE REFERENCE AS THEY CONTAIN IMPORTANT INFORMATION. IMPORTANT: PLEASE READ ALL INSTRUCTIONS BEFORE OPERATING YOUR VEHICLE.

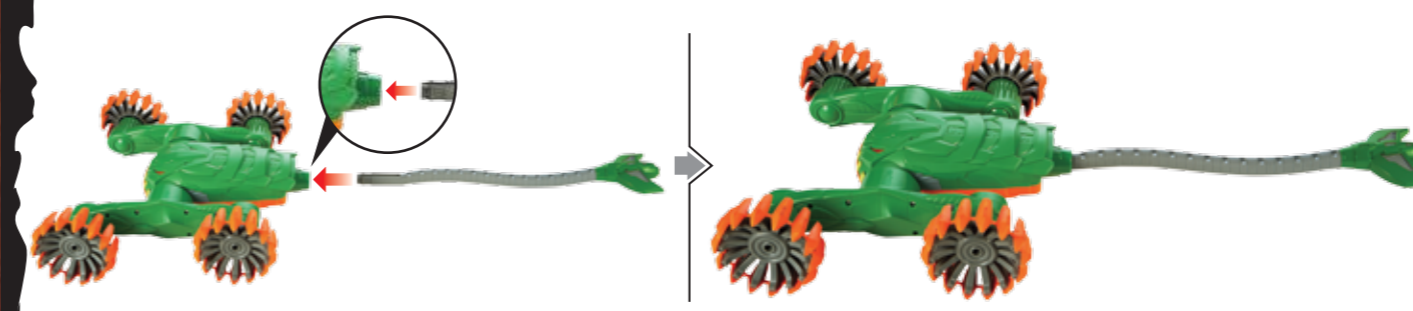
8+

CONTENTS



1 ASSEMBLY

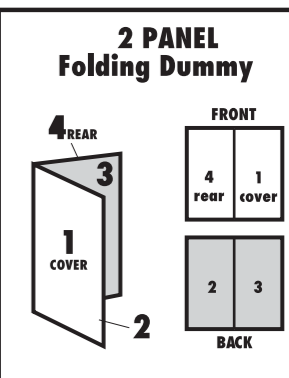
Line up the notch and the groove, then insert tail into the vehicle body. Push firmly until the tail locks into place.



©2016 Mattel. All Rights Reserved. Mattel, Inc., 636 Girard Avenue, East Aurora, NY 14052, U.S.A. Consumer Services 1-800-524-8697. Mattel U.K. Ltd., Vanwall Business Park, Maidenhead SL6 4UB. Helpline 01628 500303. Mattel Australia Pty., Ltd., Richmond, Victoria, 3121 Consumer Advisory Service - 1300 135 312. Mattel East Asia Ltd., Room 503-09, North Tower, World Finance Centre, Harbour City, Tsimshatsui, HK, China. Tel.: (852) 3185-6500. Dimpport & Diedarkan Oleh: Mattel Southeast Asia Pte. Ltd., No 19-1, Tower 3 Avenue 7, Bangsar South City, No 8, Jalan Kerinchi, 59200 Kuala Lumpur, Malaysia. Tel: 03-78803817, Fax: 03-78803867.

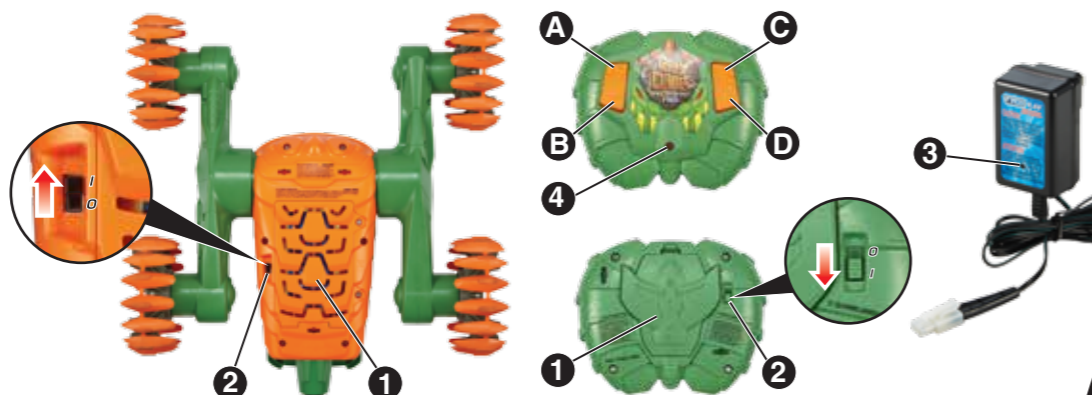
SERVICE.MATTEL.COM

INSTRUCTION SHEET SPECIFICATIONS	
Toy No.:	RC Terra Climber
Toy No.:	DN384
Part No.:	0970
Trim Size:	A3
Folded Size:	A4
Type of Fold:	
# colors:	Black
Paper Stock:	White Offset
Paper Weight:	70 lb.
EDM No.:	



2 FEATURES

- BATTERY COVER
- ON (I) / OFF (O)
- RED/GREEN LED
- RED LED
- BUTTON A
- BUTTON B
- BUTTON C
- BUTTON D



3 CONSUMER INFORMATION

Note to Adults: To ensure that the child's play is both safe and fun, please review all operating instructions and safety rules with your child.

- NEVER drive your vehicle on streets! Streets are for real cars!
- DO NOT pick up the vehicle while it is in motion.
- The toy is not intended for children under 8 years old.
- Keep fingers, hair and loose clothing away from the wheels while the vehicle is switched ON.
- Never disassemble or attempt to modify the vehicle.
- Operating range of transmitter is around 65 feet (20 meters).
- When not in use, turn off the vehicle and transmitter. To avoid accidental operation, remove all batteries.
- If the vehicle and/or transmitter are wet, thoroughly dry before next use.
- Regularly examine all wires and connectors. In the event of damage, do not use.

4 LET'S GET STARTED!

FIRST OFF, YOU MUST CHARGE THE 9.6V TYCO™ RC BATTERY PACK. FOLLOW THESE INSTRUCTIONS: CAUTION: Use only the charger supplied with this toy. Do not use any other charging source.

- Plug wall pack charger into standard wall outlet.
- Connect the wires leading from the battery pack to the wall pack charger connector. Make certain the two connectors are tightly snapped together.
- A red LED will light up to indicate the battery pack is charging. When a green LED lights up, that means charging is complete.
- To disconnect wires, push down on the connector clip and pull apart.
- Your battery pack consists of new parts and materials; therefore, you should charge the battery pack for 5-1/2 hours the first two times you charge the battery. Subsequent charges will require only 4 hours.
- After charging, the battery will feel warm. This condition is normal for fully charged batteries.
- Charging the battery pack for more than what is recommended will not give you a longer running time.
- Unlike alkaline batteries, where the power loss is gradual, a NiMH battery will run for its normal running time, depending on your particular vehicle, and then lose most of its power at once. It is now time to recharge the battery pack.
- After use, the battery pack will be hot! Wait at least 20 minutes until the battery pack cools before recharging. Recharging a warm or hot battery pack will greatly reduce the number of times your battery pack can be recharged.

9.6V d.c. NiMH,
1 x 8AA 900 mAh.

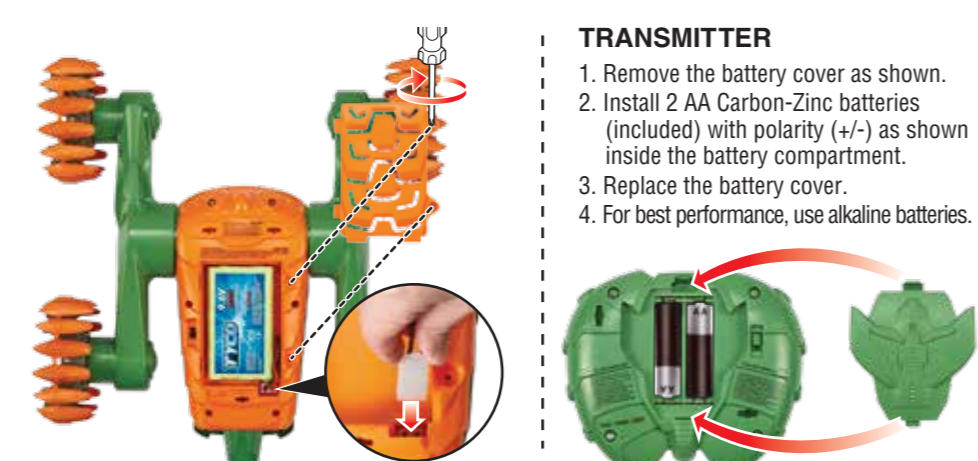
5 BATTERY INSTALLATION

Requires a 9.6V TYCO™ RC (NiMH) battery pack for the vehicle and 2 AA (LR6) alkaline batteries for the transmitter. For longer life, use alkaline batteries. Dispose of batteries safely.

VEHICLE

- First turn the Terra Climber™ vehicle upside down as shown.
- Unscrew the battery cover with a Phillips head screwdriver (not included).
- Hold the TYCO™ RC 9.6V battery pack (included) with the labels facing up as shown. Insert the battery connector into the vehicle battery connector as shown.
- Replace the battery cover and tighten screws.

NOTE: If vehicle malfunctions, remove and re-install the batteries. This should reset your vehicle and let you resume normal operation.



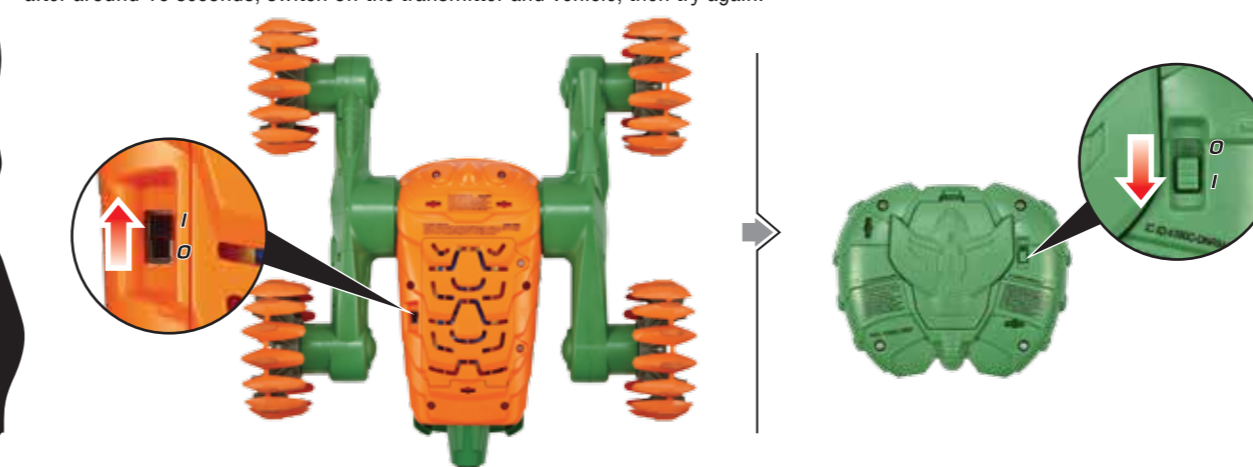
TRANSMITTER

- Remove the battery cover as shown.
- Install 2 AA Carbon-Zinc batteries (included) with polarity (+/-) as shown inside the battery compartment.
- Replace the battery cover.
- For best performance, use alkaline batteries.



6 PAIRING THE TRANSMITTER AND VEHICLE

You must pair the transmitter with the vehicle before you can control it. FIRST SWITCH ON THE VEHICLE, THEN IMMEDIATELY SWITCH ON THE TRANSMITTER. The transmitter's red LED changes from a flashing light to off when pairing is complete. If the red LED does not stop flashing after around 10 seconds, switch off the transmitter and vehicle, then try again.



NOTE: When playing with multiple vehicles, each must be paired one at a time. A maximum of 6 vehicles can be paired in one location.

7 OPERATIONS

FORWARD / CLIMBING



FLIP OVER / REVERSE



TURN LEFT



TURN RIGHT



SPIN LEFT



SPIN RIGHT



NOTES

- For best performance, play on concrete or asphalt surfaces.
- Keep wheels clean. A buildup of dirt or dust might affect the climbing performance of the vehicle.