

**Just for reference, NOT for printing.**

**僅供參考，請勿用於印刷。**



# INSTRUCTIONS

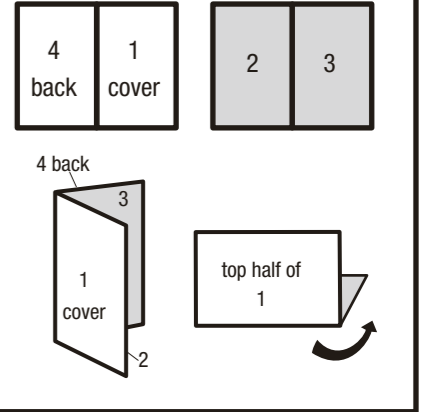


INSTRUCTION SHEET SPECIFICATIONS	
Toy Name:	BARBIE PUPPY MOBILESISTERS GIFTSET
Toy No.:	FDN00
Part No.:	FDN00-0970 1101279890-DOM
Lang. Code:	DOM
Trim Size:	17" W x 11" H
Folded Size:	8.5" W x 11" H
Type of Fold:	2 panel
# colors:	1
Colors:	Black
Paper Stock:	FSC
Paper Weight:	70 lb.
EDM No.:	001

## Contents

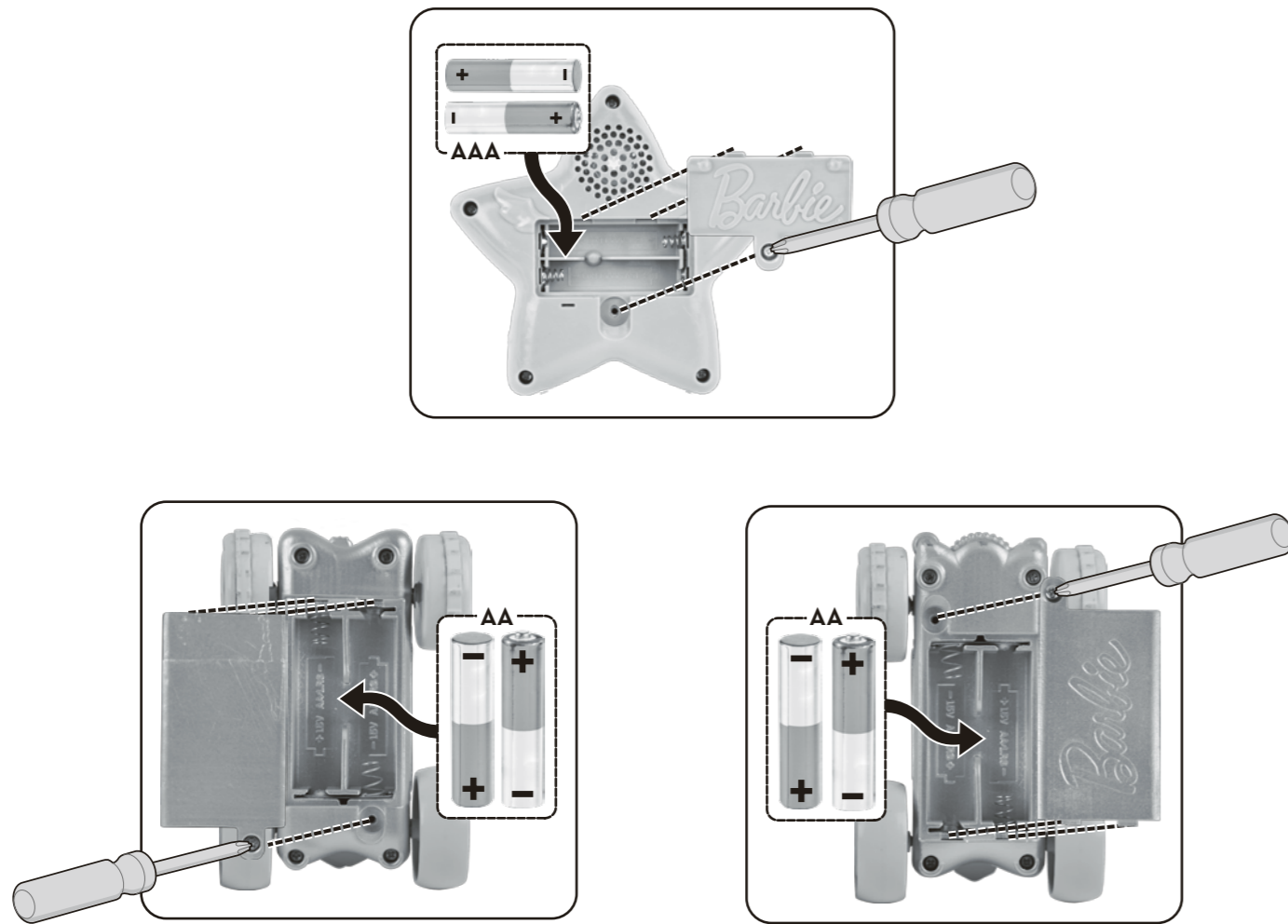


CAUTION: To prevent entanglement, keep hair away from wheels.



The FCC Flyer for 2.4 GHz RC product is required to be placed inside the packaging. 00007-1850

此為电动产品。要求將包含電池安全信息與垃圾補標示的附頁放入包裝。Battery Safety Information and WEEE Logo with 2012/19/EU Flyer is required to be placed inside the packaging. 27L 00001-2908G12



### Battery Installation

Unscrew the battery cover with a Phillips head screwdriver (not included). Install 2 AAA (LR03) alkaline batteries for star controller and 4 AA (LR6) alkaline batteries (not included) for skating doll, 2 AA batteries for each skate, in the orientation (+/-) as shown. Replace battery cover and tighten screws. When exposed to an electrostatic source, the product may malfunction. To resume normal operation, remove and re-install the batteries. Replace batteries of skates when red LED light goes dim or does not go on. If the skate's LED light is bright, and the doll slows down, loses range, or does not respond, then replace the batteries in the star controller. For longer life, use only alkaline batteries.

**CONSUMER INFORMATION**  
Need Assistance? Visit [service.mattel.com](http://service.mattel.com) or call 1-800-524-8697 (US and Canada only).  
SERVICE.MATTEL.COM

Mattel, Inc., 636 Girard Avenue, East Aurora, NY 14052, U.S.A. Consumer Services 1-800-524-8697.  
Mattel U.K. Ltd., Vanwall Business Park, Maidenhead SL6 4UB. Helpline 01628 500303. Mattel Australia Pty., Ltd., Richmond, Victoria, 3121. Consumer Advisory Service - 1300 135 312. Mattel East Asia Ltd., Room 503-09, North Tower, World Finance Centre, Harbour City, Tsimshatsui, HK, China. Tel: (852) 3185-6500.  
Diimport & Diedarkan Oleh: Mattel Southeast Asia Pte. Ltd., No 19-1, Tower 3 Avenue 7, Bangsar South City, No 8, Jalan Kerinchi, 59200 Kuala Lumpur, Malaysia. Tel: 03-78803817, Fax: 03-78803867.

R/C doll works best on smooth, hard surfaces.

Star Controller includes 2 - AAA batteries for demonstration purposes only. Skating doll requires 4 - AA Alkaline batteries, not included. Dispose of batteries safely.

Operating multiple products with the same frequency in close proximity will cause interference and poor performance. Works best away from high voltage power lines, large buildings and walls. Play Safely! Do not drive product in the street!



For best performance, wipe each skate with a damp cloth(not included) after play.

Please remove everything from the package and compare to the contents shown here. If any items are missing, please contact your local Mattel office. Keep these instructions for future reference as they contain important information.

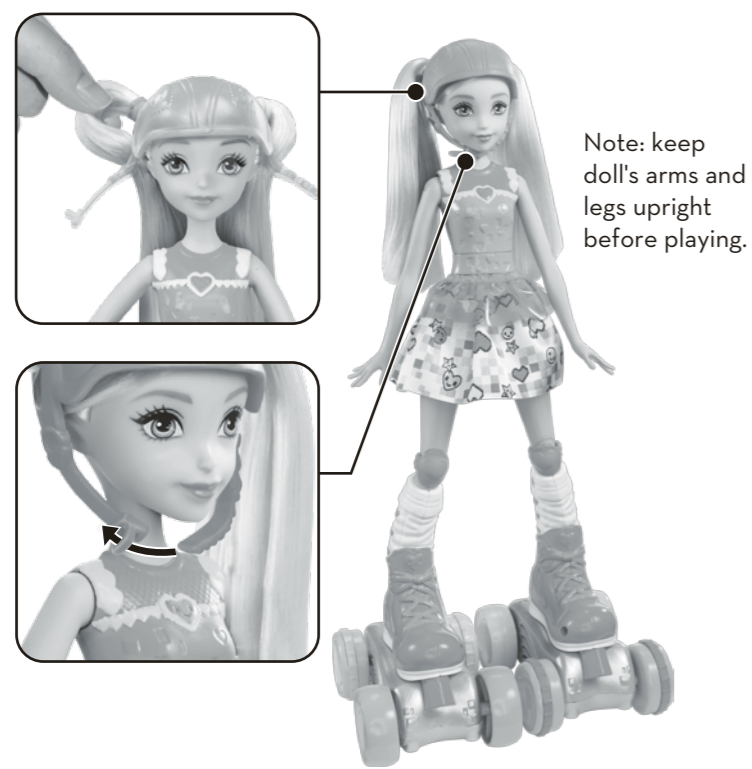
© 2016 Mattel. All Rights Reserved.

FDN00-0970  
1101279890-DOM

4

1

## Assembly



## SET UP

Back view

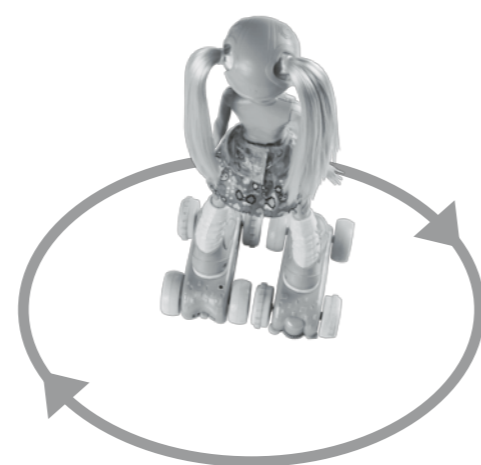


I=ON O=OFF

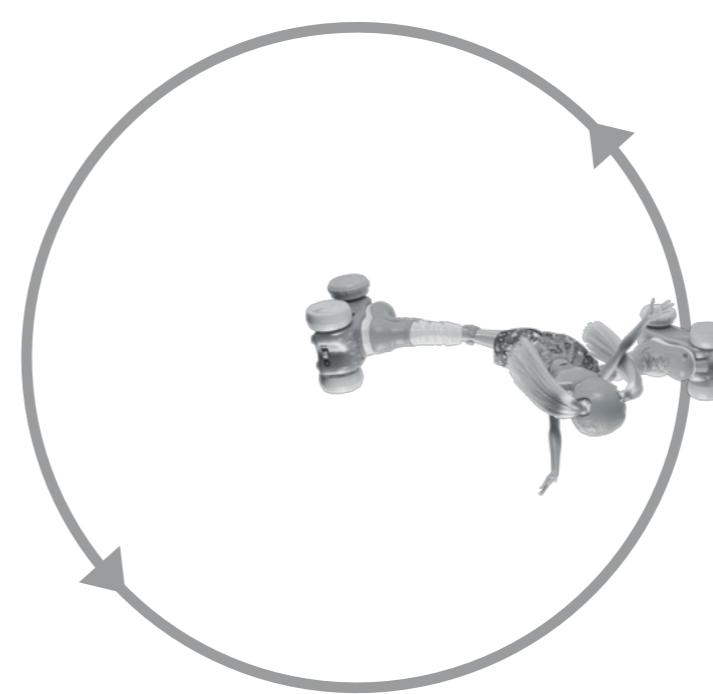
Note: After 5 minutes of inactivity, the skating doll will auto shut off and the light on the skate will turn off. To restart, slide the switch to "Off" and then "On" again. IMPORTANT: Be sure to turn the ON/OFF switch on the doll's left skate to OFF when not playing with toy.

## Let's Play

Standing



Split



Spins

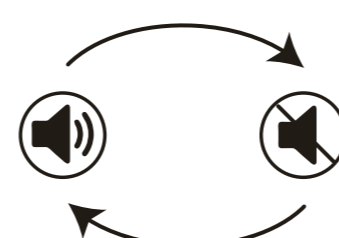
Forward

Backward

Standing

Split

Music/Mute



2

3