



6+



INSTRUCTIONS

K3841-0920

Keep these instructions for future reference as they contain important information.

CONTENTS:



Visit CartoonNetwork.com
TM & © Cartoon Network
(s07)

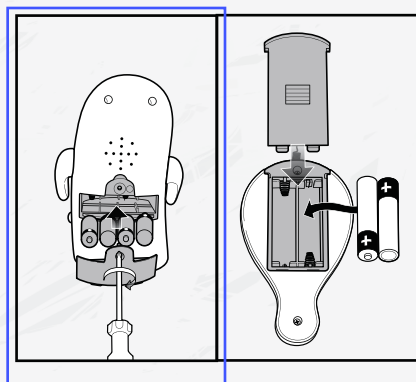
Requires 4 "AA" (LR6) alkaline batteries for the figure and 2 "AA" (LR6) alkaline batteries for the paddleball remote control (not included). Batteries included are for demonstration purposes only.

2006 Mattel, Inc. All Rights Reserved.

INSTALL BATTERIES

BLOOREGARD FIGURE

Unscrew battery cover with a Phillips head screwdriver (not included). Remove batteries included for demonstration purposes only and dispose of them safely. Install 4 new "AA" (LR6) alkaline batteries (not included), in the orientation (+/-) shown. Replace battery cover and tighten screw.



PADDLEBALL REMOTE CONTROL

Unscrew battery cover with a Phillips head screwdriver (not included). Install 2 "AA" (LR6) alkaline batteries (not included), in the orientation (+/-) shown. Replace battery cover and tighten screw.

When the product does not respond, slows down, loses range, or sounds are garbled or play slowly, change the batteries. For optimal performance use only alkaline batteries.

Battery life may vary depending on battery brand.



Protect the environment by not disposing of this product with household waste (2002/96/EC). Check your local authority for recycling advice and facilities.

Battery Safety Information

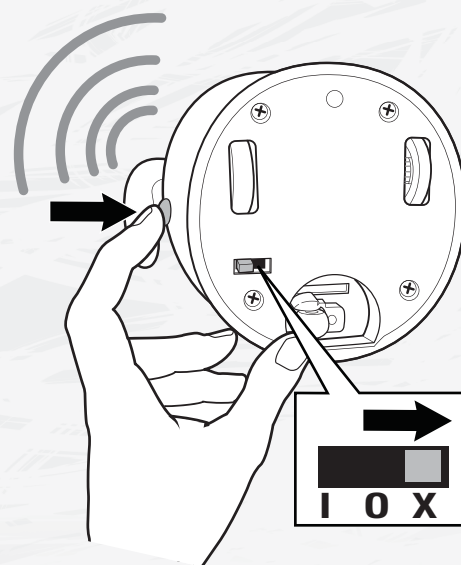
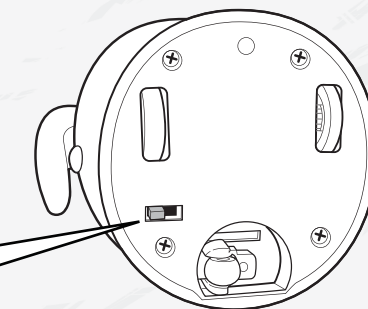
In exceptional circumstances batteries may leak fluids that can cause a chemical burn injury or ruin your toy (product). To avoid battery leakage:
• Non-rechargeable batteries are not to be recharged.
• Rechargeable batteries are to be removed from the product before being charged (if designed to be removable).
• Rechargeable batteries are only to be charged under adult supervision (if designed to be removable).
• Do not mix alkaline, standard (carbon-zinc), or

rechargeable (nickel-cadmium) batteries.
• Do not mix old and new batteries.
• Only batteries of the same or equivalent type as recommended are to be used.
• Batteries are to be inserted with the correct polarity.
• Exhausted batteries are to be removed from the product.
• The supply terminals are not to be short-circuited.
• Dispose of battery(ies) safely.
• Do not dispose of this product in a fire. The batteries inside may explode or leak.

GET READY TO PLAY

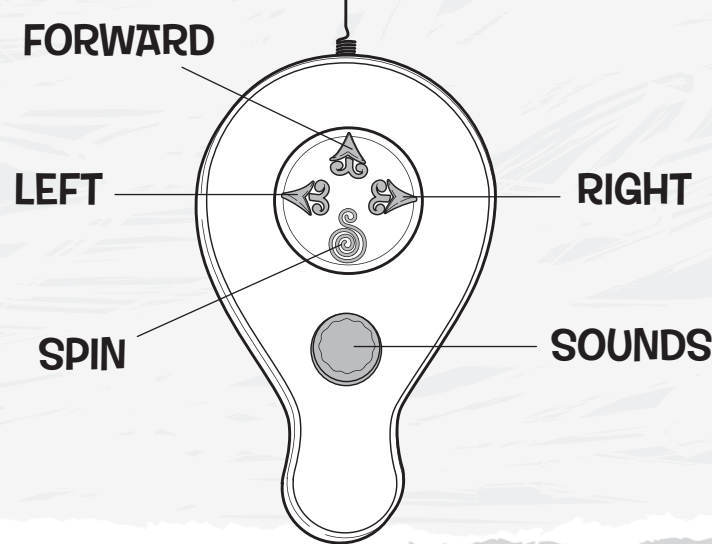
BOTTOM VIEW

I = ON
O = OFF
X = TRY-ME



When holding Blooregard you can activate sound by sliding the switch to "X" and pressing the button on his side.

PADDLEBALL REMOTE CONTROL

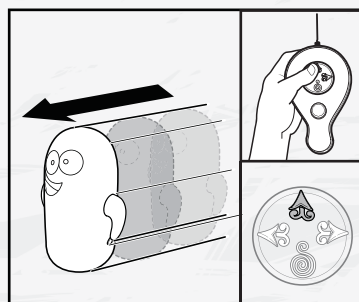


TO PLAY

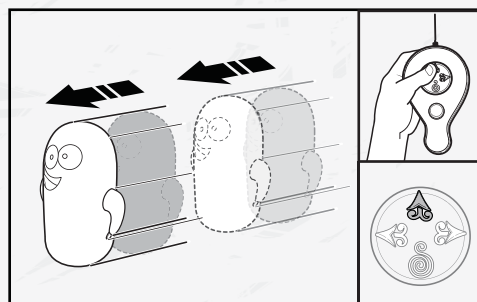
Move switch on bottom of Blooregard to ON (I).

You control Blooregard!

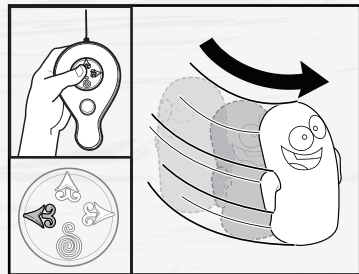
Use the buttons on the paddleball remote control to activate Blooregard's movements with sounds. Make Blooregard travel right, left, go forward, creep forward as if you are sneaking up on something, or spin in place by pressing the buttons on the paddleball remote control.



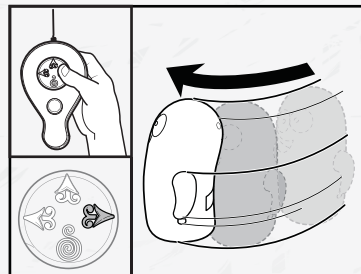
GO FORWARD
Press and hold to move forward.



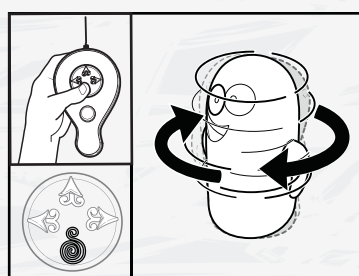
CREEP FORWARD
Press and release to creep forward.



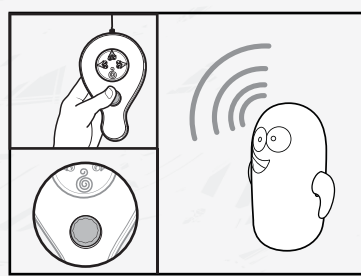
TURN LEFT
Press and hold to turn. Release to stop.



Turn Right
Press and hold. Release to stop.



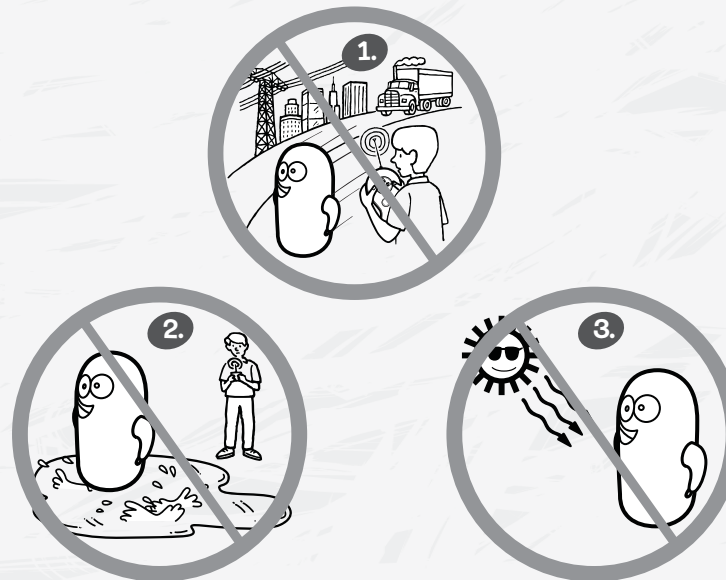
SPIN
Press and release to spin. You can press and hold the button to spin longer. Release to stop.



ACTIVATE SOUNDS
Press and hold to activate phrases and sounds. Press and release to repeat phrases and sounds.

Works **ONLY** on flat, level, hard surfaces.

QUICK TIPS



1. Operating multiple R/C vehicles with the same frequency in close proximity may cause interference and poor performance. The product works best away from high voltage power lines, large buildings and walls. Try to stay away from these.
2. If the product gets wet it is important not to operate it until it is completely dry, inside and outside. Use a clean dry cloth to remove any water, dirt, or mud immediately.
3. Do not store near heat or in direct sunlight. Always turn switches OFF and remove all removable batteries for storage.

For greatest range, be sure the antenna on the paddleball remote control is straight.

Play Safely! – Do not play with product in the street!

NOTE: Changes or modifications not expressly approved by the manufacturer responsible for compliance could void the user's authority to operate the equipment.

Operation is subject to the following two conditions: (1) this device may not cause interference, and (2) this device must accept any interference, including interference that may cause undesired operation of the device.

Mattel, Inc., 333 Continental Blvd., El Segundo, CA 90245 U.S.A. Consumer Relations 1-800-524-8697.
service.mattel.com Mattel U.K. Ltd., Vanwall Business Park, Maidenhead SL6 4UB, Helpline 01628500303 Mattel Australia Pty Ltd., Richmond, Victoria, 3121. Consumer Advisory Service - 1300 135 312. Mattel East Asia Ltd., Room 1106, South Tower, World Finance Centre, Harbour City, Tsimshatsui, HK, China. Diimport & Diedarkan Oleh: Mattel SEA Ptd Ltd. (993532-P) Lot 13.5, Menara Lien Hoe, Persiaran Tropicana Golf Country Resort, 47410 PJ. Tel:03-78803817, Fax:03-78803867.

INSTRUCTION SHEET SPECIFICATIONS	
Toy No.:	K3841
Part No.:	0920
Trim Size:	11" W x 11" H
Folded Size:	5.5" W x 11" H
Type of Fold:	
# colors:	One
Colors:	Black
Paper Stock:	White Offset
Paper Weight:	70 lb.
EDM No.:	