



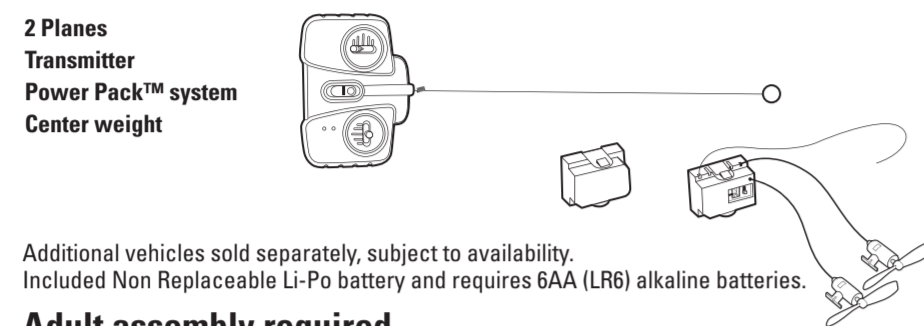
8+ ASST. K7256
K8887/88/L512/13-0920



INSTRUCTIONS

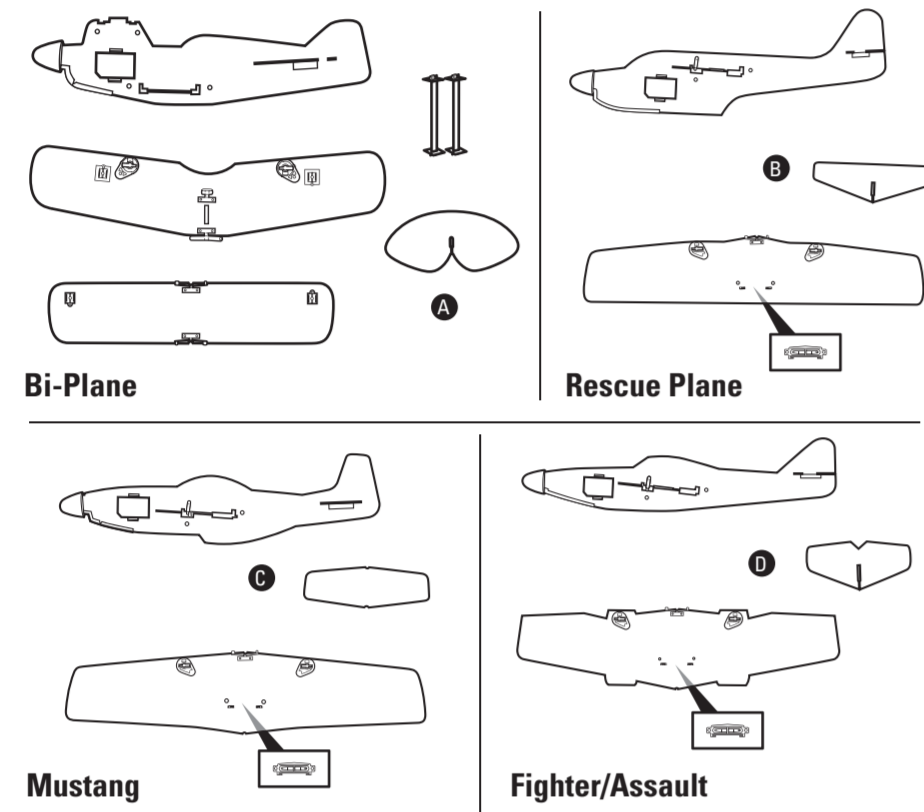
Keep these instructions for future reference as they contain important information. This plane is designed to be played outdoors. It's main advantage is its lightness. That means, however, you'll need to take extra precautions when handling the aircraft.

CONTENTS/FEATURES

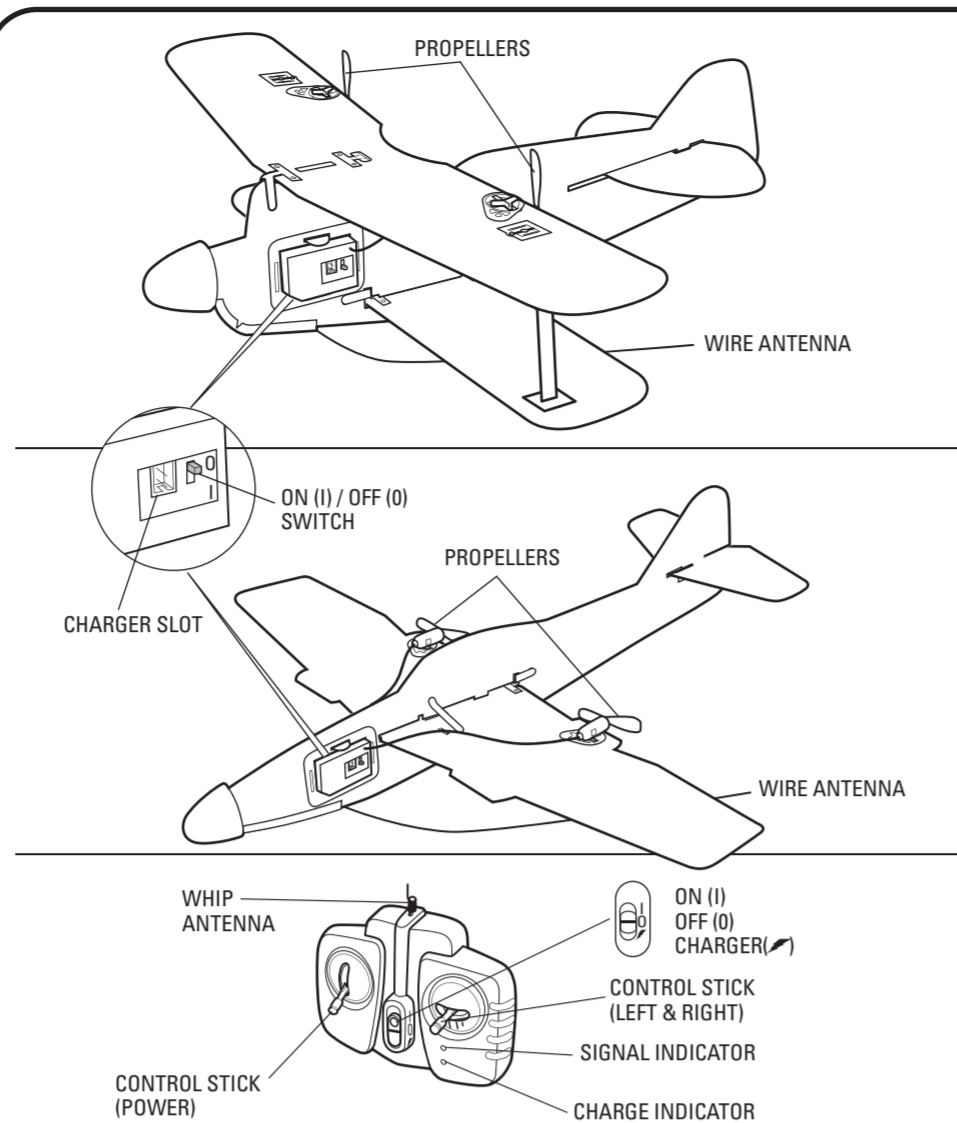


Additional vehicles sold separately, subject to availability. Included Non Replaceable Li-Po battery and requires 6AA (LR6) alkaline batteries.

Adult assembly required.

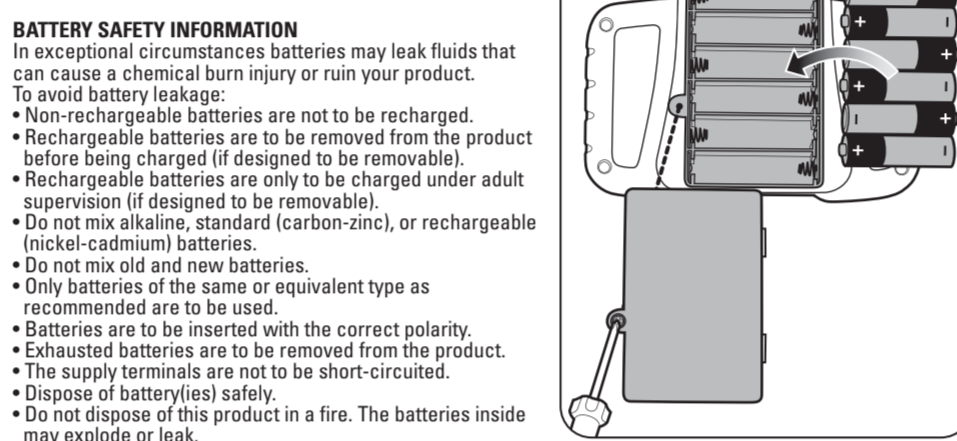


Produced under license from Boeing Management Company. P-51 & North American are among the trademarks owned by Boeing.



INSTALL BATTERIES

Unscrew battery cover with a Phillips head screwdriver (not included). Install 6 "AA" (LR6) alkaline batteries (not included), in the orientation (+/-) shown. Replace battery cover and tighten screws.

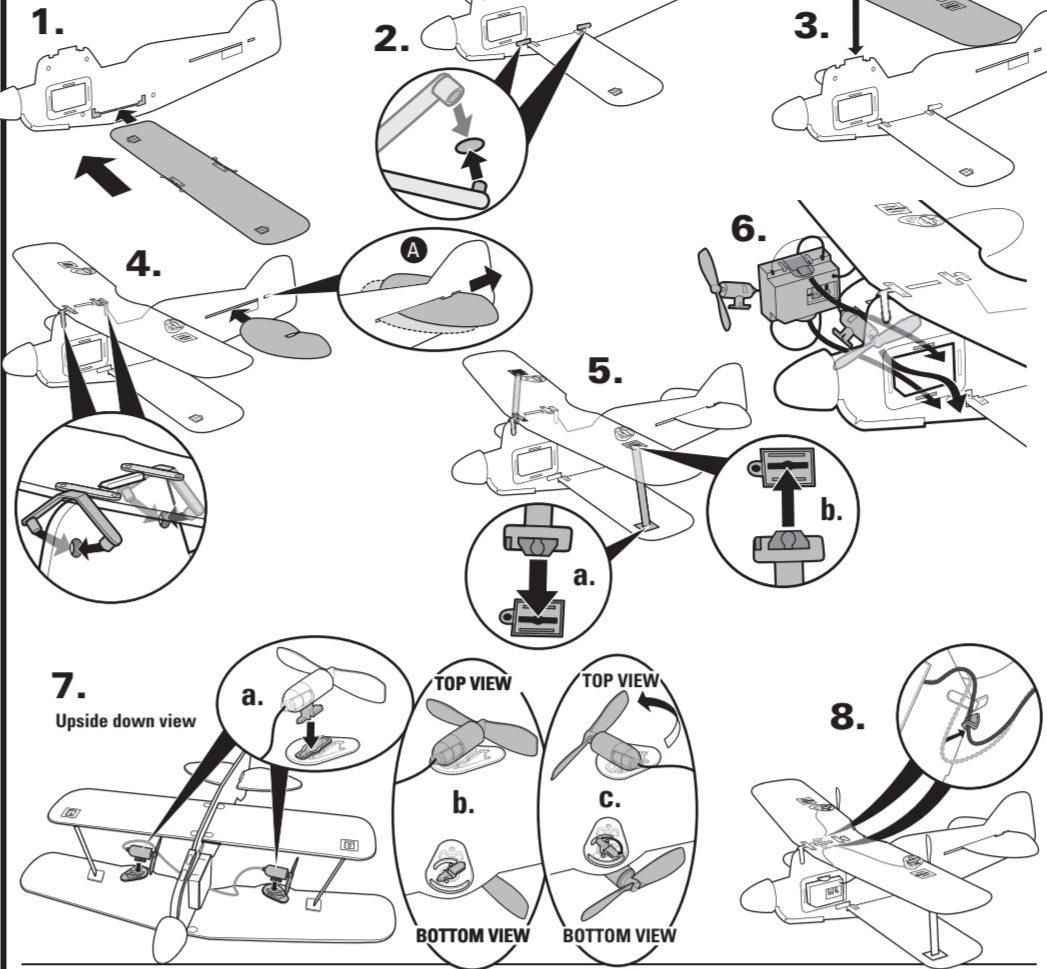


Battery Performance Note: For best performance use alkaline batteries. Battery life may vary depending on battery brand.

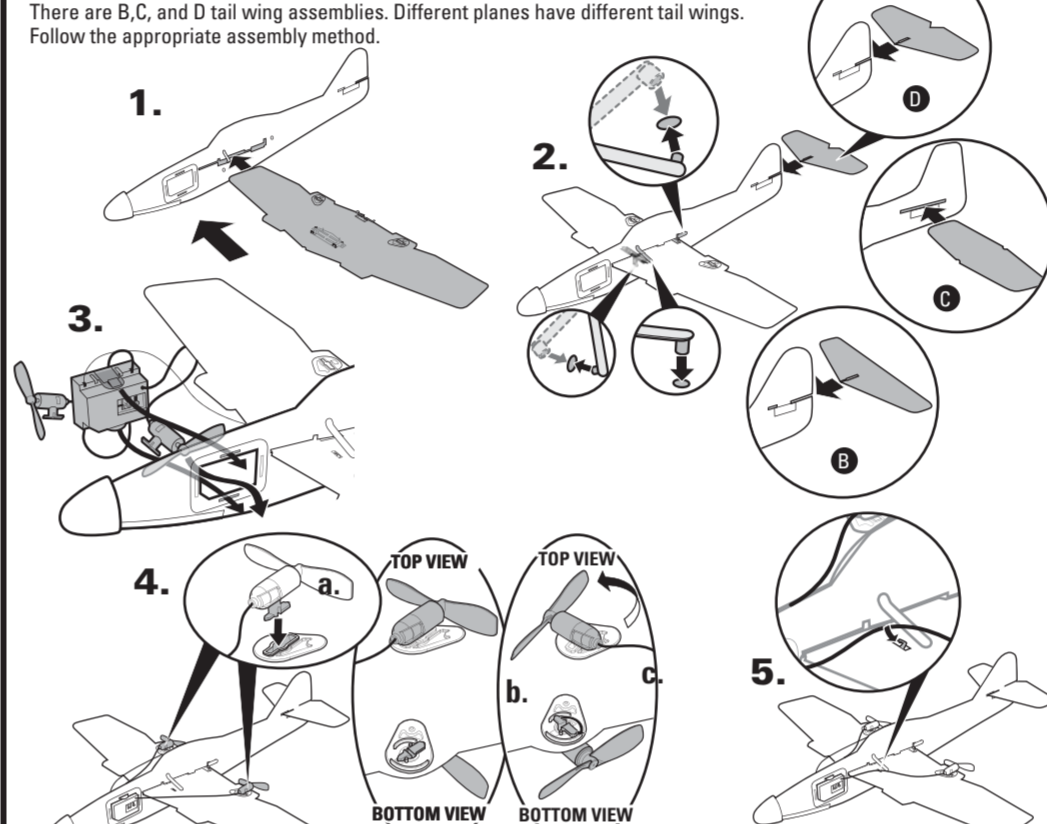
IMPORTANT INFORMATION
 • DO NOT RECHARGE THE PLANE IF IT FEELS HOT. ALLOW IT TO COOL BEFORE RECHARGING.
 • DO NOT ATTEMPT TO USE OR CHARGE THE PLANE IF IT SHOWS SIGNS OF LEAKAGE OR CORROSION.
 • DO NOT DISASSEMBLE THE PLANE PERMANENTLY INSTALLED LiPo (Lithium Polymer) BATTERY. THE LiPo BATTERY IS A SEALED LiPo BATTERY.
 • IF THE PLANE AND/OR CHARGER ARE WET, THOROUGHLY DRY BEFORE USING OR CHARGING.
 • REGULARLY EXAMINE ALL WIRES AND CONNECTORS. IN THE EVENT OF DAMAGE, DO NOT USE.

BUILD IT!

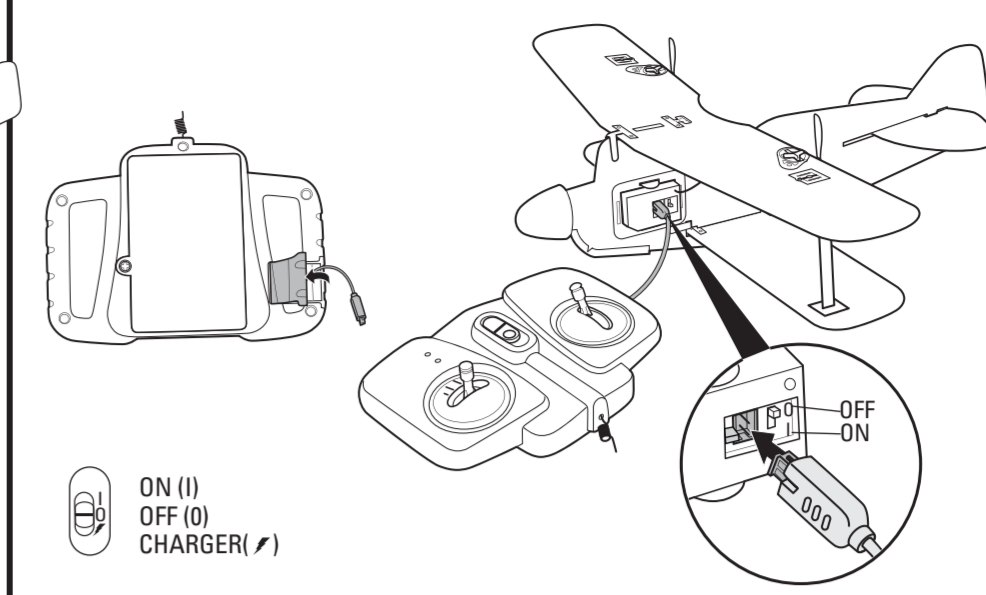
Bi-PLANE ASSEMBLY



SINGLE WING PLANE ASSEMBLY



POWER IT!

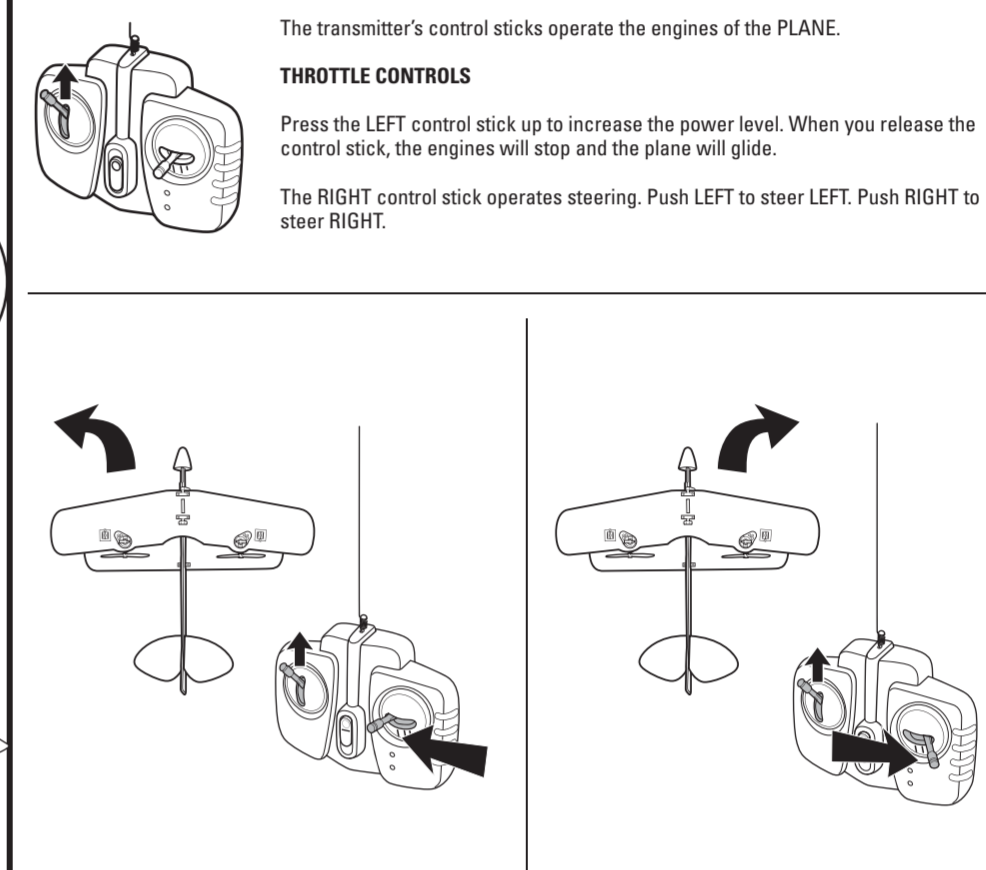


The Power Pack™ system is powered by an internal LiPo battery that is permanently installed. It must be charged before using. To charge, first make sure you have installed 6 "AA" (LR6) alkaline batteries in the TRANSMITTER/CHARGER as shown earlier. Then follow these easy steps:

1. Make sure both Power Pack™ system power switch and the TRANSMITTER/CHARGER are in the OFF position.
2. Open the door on the TRANSMITTER/CHARGER as shown.
3. Plug the TRANSMITTER/CHARGER'S wire connector into the PLANE as shown. Make sure the connection is secure.
4. Move the power switch on the TRANSMITTER/CHARGER to the very bottom notch position.
5. The green LED charge indicator will turn on.
6. The charging process takes up to 25 minutes. When the green LED charge indicator turns off, the charging cycle is complete. Move the power switch on the TRANSMITTER/CHARGER to OFF (middle position).
7. Remove the charger cable from the plane.

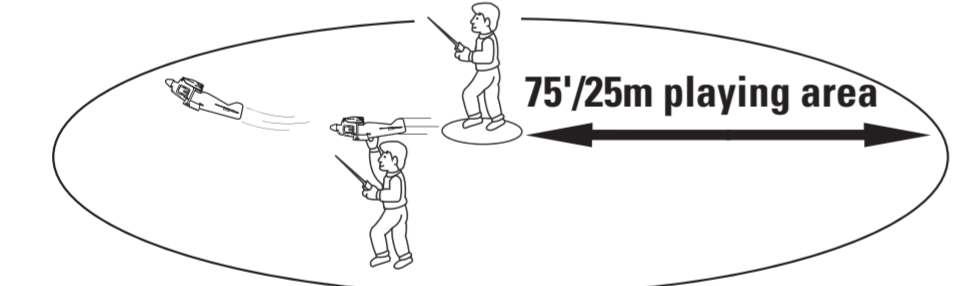
TIP: Always hold the plug when disconnecting. NEVER pull on the wire to disconnect, this may cause the wire to break.

CONTROL STICKS AND BUTTONS



PRE-FLIGHT CHECK

1. Give yourself plenty of flying room. For best results, you should have at least 75 feet / 25 m of open space in all directions. Try to find a grassy open area as pavement will damage the product.



2. Avoid tall buildings, trees, and power lines as they may obstruct your flight path, and they may create air currents that make it difficult to operate your plane.
3. DO NOT fly in the street!

- DO NOT attempt to operate your plane in strong winds. Strong winds will make it difficult to fly safely, and will reduce battery life and flying time. Remember that the wind may be stronger at higher altitudes than at ground level.
- Be careful! Be a safe pilot...use common sense and care when flying. Watch out for people, animals, and obstacles.

TIP: When you turn the plane on and push the control stick upwards the propellers will spin. Keep clear of the propellers!

NOTE: Test fly the plane by gliding without power. Only fly in no wind/still conditions. This test glide should be made before any flying session.

FLIGHT TIPS FOR BEGINNERS

You'll need to put in some flight time to become an ace pilot. Practice these steps to sharpen your skills.

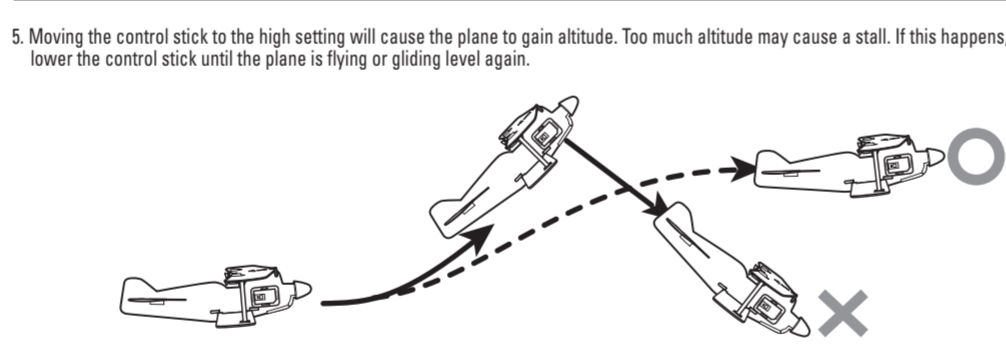
- TIP:** When launching the plane, you may want to ask a friend to launch the plane while you operate the controls.
- TIP:** For the first few flights, you may want to keep the control stick at medium power for the entire flight; this will make it easier to learn the controls and get a feel for the way the plane operates. With practice, you can begin to vary the control stick power for longer flights. During flight, you can vary your speed by pressing the control stick up or down. Expert pilots can throttle back to take advantage of air currents, conserving battery power. Reduce engine power to decelerate or descend; increase engine power to climb. A charged battery should give you several minutes of flying time. Depending on conditions and flying style, your own flying time may range up to 10 minutes... maybe even longer, if you can catch and ride the air currents.
- TIP:** Time your first few flights to get an idea of the kind of flight time you can expect. As you near the end of the flight, steer the plane back toward you. That will make it easier to retrieve the plane after landing.
- TIP:** If the plane touches down with the propellers still spinning, quickly turn off the engines by releasing the control stick. After landing, switch the plane to the OFF position.

READY TO FLY

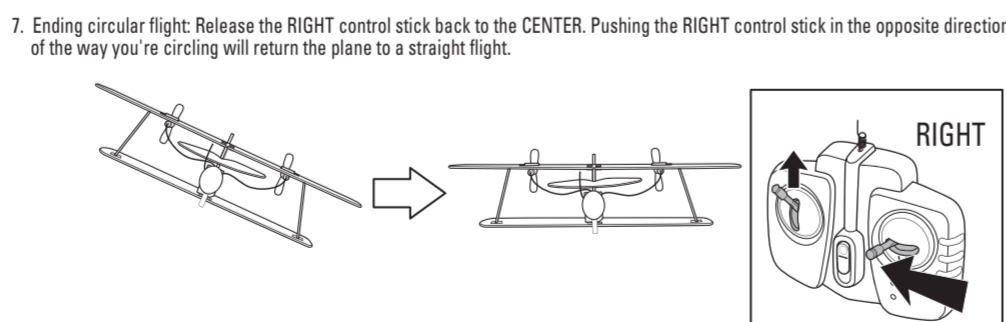
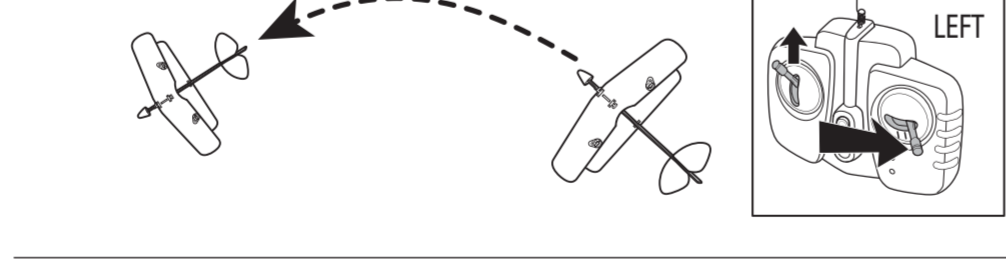
Make sure the antenna is straight and dangling below. Charge the plane as shown previously. Turn the plane ON. Turn the transmitter ON.

FLY IT!

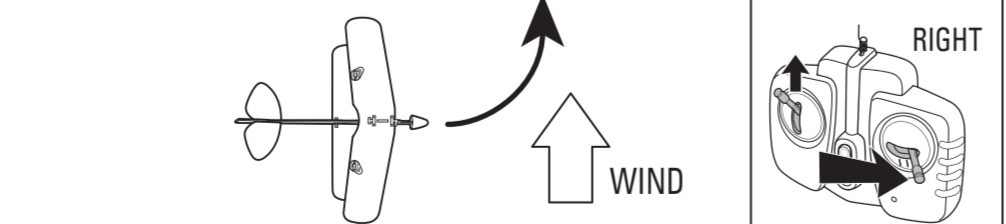
1. Hold the PLANE just underneath the wings in one hand. Holding the controller in the other hand, move the LEFT control lever (throttle) into low speed position. Propellers will begin to spin.
2. Gently toss the plane in a straight, horizontal direction. ALWAYS keep the plane in a horizontal position during the first few seconds of flight.
3. If the plane turns to the left, push directional control lever to the RIGHT. If the plane turns to the right, push directional control lever to the LEFT.
4. To turn right, push directional control lever to the RIGHT. To turn left, push directional control lever to the LEFT.



6. Circling: If the control stick is set to the RIGHT or LEFT, the plane will turn in that direction. The plane will start circling and start losing altitude unless the control stick is occasionally released to the CENTER. For example, when making a rightward circular flight, try setting the control stick to the RIGHT and to the CENTER repeatedly.



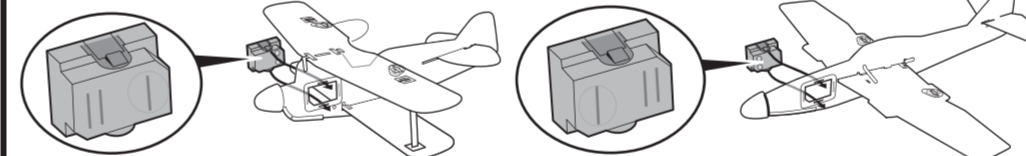
8. Correcting windshave: When the plane is flying straight and there is a sudden wind, its course will be disturbed. Move the control stick to the opposite direction in order to put the plane back on course. For example, if the wind pushes the plane towards the left, move the control stick to the RIGHT. If the wind pushes the plane towards the right, move the control stick to the LEFT.



9. If the plane is getting out of control range (too high), release the throttle and let the plane glide down to a lower height and then try applying the throttle again.
10. LANDING: To land the plane, first lower the plane speed to begin a descent. After landing, switch the Power Pack™ system to the OFF position.
11. After each landing, make sure the wings and propellers are in the proper positions. Some hard landings will shift the wings/propellers.

GLIDER

Gliding: Remove the Power Pack™ System and replace with the center weight. Orient the plug into the plane so that the weight is to the REAR for the Bi-plane and towards the front for the single wing planes. Gently throw the glider in a straight line as possible. See how far it'll go!



QUICK TIPS

1. Radio interference can make the plane fly poorly. Interference can be caused by other R/C vehicles running on the same frequency, electrical wires, large buildings, or CB radios. Try to stay away from these!
2. Flying time may change depending on air conditions and on your flying style. When the plane fails to respond, slows down, or loses range, recharge it. If performance does not improve following a recharge, install fresh alkaline batteries in the charger.
3. For the greatest range, make sure the transmitter antenna is pointed up...and make sure the wire antenna on the plane is straight and dangling.
4. Because the plane is sensitive to extra weight, dirt or mud on the plane can affect its operation. Use a clean dry cloth to remove any dirt or mud immediately. If the plane gets wet, it's important not to operate it until it's completely dry, inside and outside. Wipe surfaces with a towel and allow the plane to air-dry until it's dry...overnight at least.
5. Do not store the plane near heat or in direct sunlight. Always turn switches OFF and remove all removable batteries for storage.

SAFETY INFORMATION
 Adults, this toy is recommended for children 8 years of age and older. To ensure that the child's play is both safe and fun, please review the operating instructions and these general safety rules with the child.
 • Keep fingers, hair and loose clothing away from the propellers while the plane is switched ON.
 • Adult supervision is recommended when the plane is being operated.
 • To avoid accidental operation, remove all removable batteries when not in use and turn off the plane.
 • If the plane and/or charger get wet, discontinue use until they are completely dry. Thoroughly wipe off all moisture and allow them to air-dry completely before use.
 • DO NOT fly in the street! Make sure you have plenty of open space in all directions.
 • Regularly inspect the antenna for cracks or breaks. DO NOT bend the transmitter antenna when extended. DO NOT use the transmitter if the antenna is broken.
 • The wire antenna is fragile. Never pull or tug on the antenna, as it may loosen or detach from the plane. Never coil or knot the antenna.
 • Use only the charger supplied with this toy, do not use any other charging source.

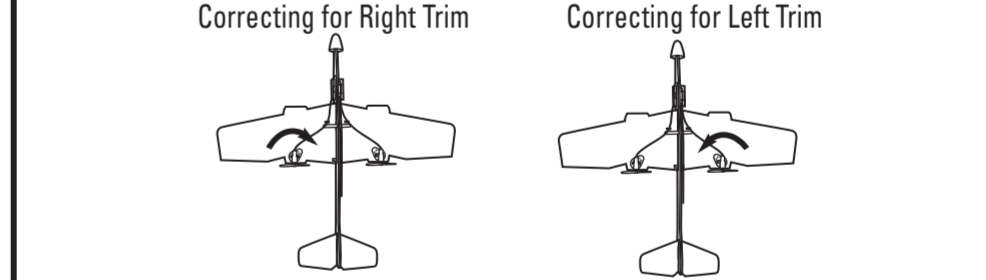
REPAIR

Use clear household tape to repair tears, creases or cracks. Use sparingly as added weight will affect performance.

TROUBLESHOOTING

It takes a little time and practice to become an ace pilot. If you still have difficulty flying the plane, please check this troubleshooting guide. Usually the problem is a simple one...with a quick solution.

1. Check all removable batteries. Make sure connections are secure. You may need to replace the transmitter battery, and/or the charger batteries, with fresh alkaline batteries.
2. Check air conditions. DO NOT attempt to operate the plane in windy conditions.
3. Check antennas. Make sure the wire antenna is straight and dangling below the plane.
4. Check the plane for dirt or mud and clean it if necessary.
5. After landing, make sure the wing and fuselage assemblies are properly aligned.
6. Check that the Power Pack™ System motors are perpendicular to the wing.
7. If the propellers on the plane spin with no signal from the transmitter, turn off the Power Pack™ System and relocate to an area with no signal interference.
8. When you first take off, if the plane is turning to the right without your steering the plane then you need to turn the left propeller away from the fuselage. If trying the plane again and repeat as necessary until you achieve straight level flight. If the plane is making a left hand turn you will need to turn the right propeller away from the fuselage.
9. TRIM: If the plane does not fly straight, you can adjust the motor angles on the plane to achieve straight flight. If the plane veers to the right, rotate the LEFT motor/propeller inward. If the plane veers to the left, rotate the RIGHT motor/propeller inward.



90-DAY LIMITED WARRANTY - TYCO® R/C R/C PRODUCTS
 Mattel, Inc. warrants to the original consumer purchaser that this product will be free of defects in material and workmanship for ninety (90) days unless specified in alternate warranties from the date of purchase. Mattel will repair or replace the product, at our sole option, in the event of such a defect within this warranty period.
 In the event of a defect covered under this warranty, first call the toll-free number listed below. Many problems can be solved in this manner. If necessary, you will be instructed to return the product, postage prepaid and insured, to the address below. Enclose your name, address, dated sales receipt, and a brief explanation of the defect. Repair or replacement, and return shipment, will be free of charge. Please return only the defective part or unit, packed securely.
 This warranty does not cover damage resulting from unauthorized modification, accident, misuse or abuse. If the product is returned without a dated sales receipt, the product may be excluded from coverage under this warranty.
 Mattel's liability for defects in material and workmanship under this warranty shall be limited to repair or replacement, at our sole option, and in no event shall we be responsible for incidental, consequential, or contingent damages (except in those states that do not allow this exclusion or limitation). This warranty is exclusive, and is made in lieu of any express or implied warranty. This warranty gives you specific legal rights and you may have other rights, which vary from state to state. Some states do not allow the exclusion of incidental or consequential damages, so the above exclusions or limitations may not apply to you.
 TOLL-FREE NUMBER: 1-888-557-TYCO (8928) • Valid only in U.S.A.
 Hours: 8:00 A.M. - 5:00 P.M. Eastern Time, Monday - Friday. Expect some delay in January following the holiday season. Please be patient and keep trying the toll-free number.
 ADDRESS FOR RETURNS: CONSUMER RELATIONS
 636 GIRARD AVENUE EAST AURORA, NY 14202
 Valid only in U.S.A.

COMPLIANCE WITH FCC REGULATIONS (VALID IN U.S. ONLY)
 This device complies with part 15 of the FCC Rules. Operation is subject to the following two conditions: (1) This device may not cause harmful interference, and (2) this device must accept any interference received, including interference that may cause undesired operation.
 This device generates and uses radio frequency energy and if not used properly may cause interference to radio and television reception. It has been tested and found to comply with the limits set by the FCC which are designed to provide reasonable protection against such interference.
 NOTE: Changes or modifications not expressly approved by the manufacturer responsible for compliance could void the user's authority to operate the equipment.

Protect the environment by not disposing of this product with household waste (0002/96/EC). Check your local authority for recycling advice and facilities.
 © 2006 Mattel, Inc., 253 Continental Blvd., El Segundo, CA 90245 U.S.A. Consumer Relations: 1-888-557-8926. PRINTED IN CHINA. All Rights Reserved. MATEL, TYCO and associated trademarks and trade dress are owned by Mattel, Inc. Return the address for future reference: Mattel U.S.A. Ltd., Varunaji Business Park, Muldenhatch SLE 4UE, Halesowen 01629 500303; service.mattel.com; Mattel Australia Pty Ltd., Richmond, Victoria 3121; Consumer Advisory Service: 1300 135 312; Mattel East Asia Ltd., Room 1108, South Tower, World Finance Centre, Harbour City, Tsimshatsui, HK, China. Dimpont & Dierdaxen Osh: Mattel SEA Ptd Ltd. (953532-P) Lot 133, Menara Lien Hoe, Persiaran Topkara Golf Country Resort, 47410 PJ. Tel: 03-78803817, Fax: 03-78803867.

INSTRUCTION SHEET SPECIFICATIONS	
Title:	SKY FORCE R/C
Part No.:	07256
Rev. No.:	0020
Tree Size:	22" W x 11" H
Folded Size:	5.5" W x 11" H
Type of Fold:	One
Color:	Black
Paper Stock:	White Offset
Paper Weight:	70 LB
EDM No.:	