



Ages 6+

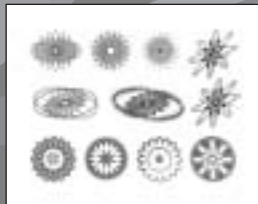
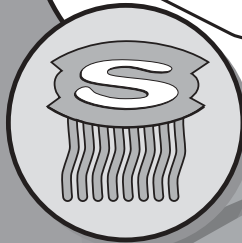
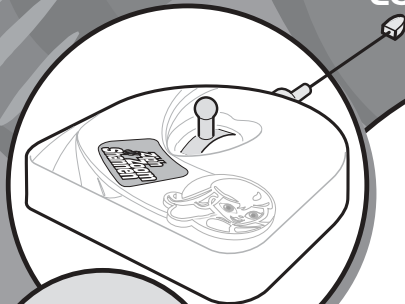


55647-0920 G1

ZIP 'N ZOOM SHANNEN™

Instructions

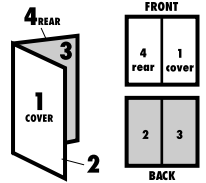
CONTENTS:



INSTRUCTION SHEET SPECIFICATIONS

Toy: Zip 'n Zoom Shann 49MHz
 Toy No.: 55647
 Part No.: 0920 G1
 Trim Size: 16.5" W x 8.5" H
 Folded Size: 5.5" W x 8.5" H
 Type of Fold: 3-Panel
 # colors: One
 Colors: Black
 Paper Stock: White Offset
 Paper Weight: 70 lb.
 EDM No.:

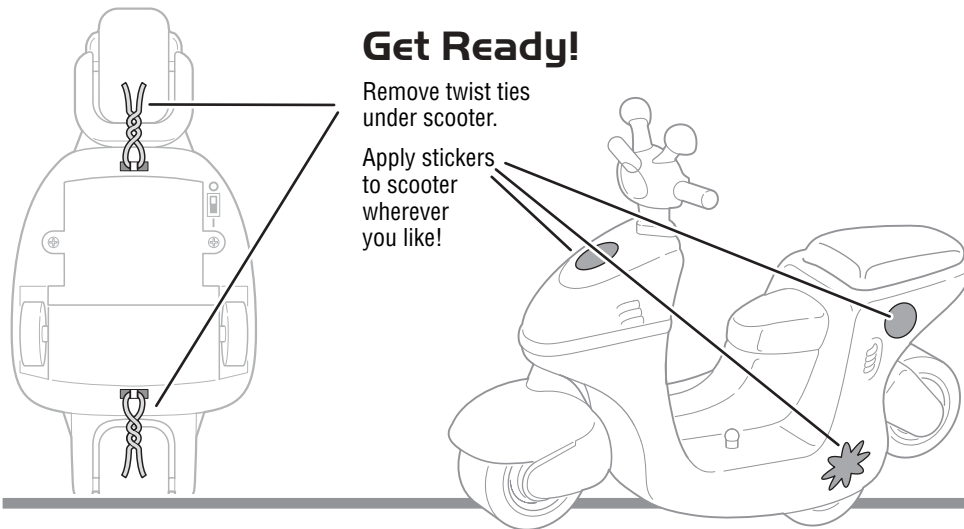
2 PANEL Folding Dummy



This product is not recommended for use on loose dirt or rough, bumpy or wet surfaces. Do not immerse in water.

Keep these instructions for future reference as they contain important information.

© 2002 Mattel, Inc., El Segundo, CA 90245 U.S.A. All Rights Reserved.
 Mattel U.K. Ltd., Vanwall Business Park, Maidenhead SL6 4UB. Helpline 01628500303.
 Mattel Australia Pty., Ltd., Richmond, Victoria. 3121. Consumer Advisory Service - 1300 135 312.
 Mattel East Asia Ltd, World Finance Centre, Harbour City, Tsimshatsui, HK, China.



Get Ready!

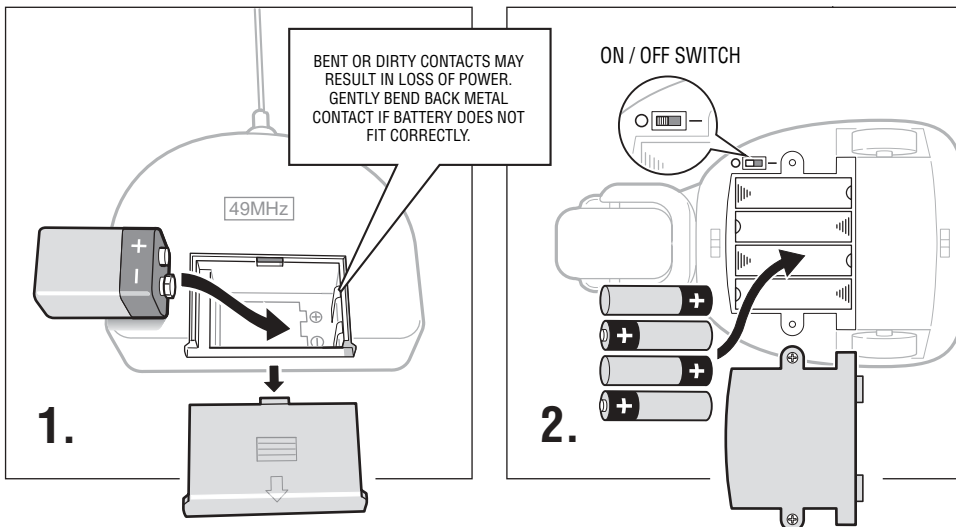
Remove twist ties under scooter.

Apply stickers to scooter wherever you like!

Install Batteries

1. Controller requires 1 "9-Volt" alkaline battery (*not included*).
2. Scooter requires 4 "AA" alkaline batteries (*not included*).

Unscrew battery compartment door with Phillips head screwdriver (not included), and lift off. Insert batteries and replace door.

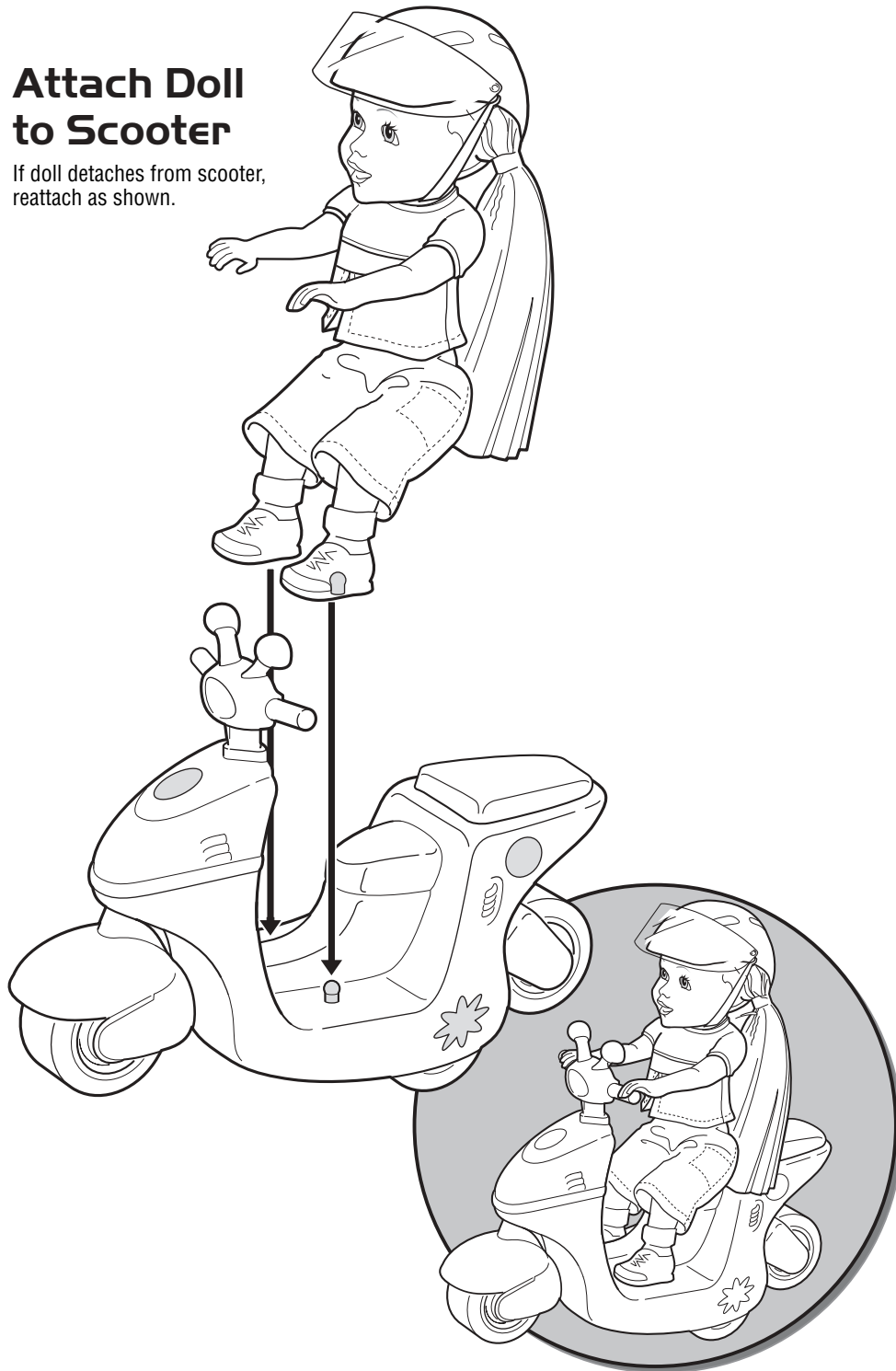


BATTERY SAFETY INFORMATION:

1. Non-rechargeable batteries are not to be recharged.
2. Rechargeable batteries are to be removed from the toy before being charged.
3. Rechargeable batteries are only to be charged under adult supervision.
4. Do not mix alkaline, standard (carbon-zinc), or rechargeable (nickel-cadmium) batteries.
5. Do not mix old and new batteries
6. Only batteries of the same or equivalent type as recommended are to be used.
7. Batteries are to be inserted with the correct polarity.
8. Exhausted batteries are to be removed from the toy.
9. The supply terminals are not to be short-circuited.
10. Dispose of batteries safely.
11. Do not dispose of in fire as batteries may explode or leak.
12. Products with non-replaceable batteries are not to be disposed of in a fire as the batteries inside may explode or leak.

Attach Doll to Scooter

If doll detaches from scooter, reattach as shown.



Your Scooter Moves 2 Ways!

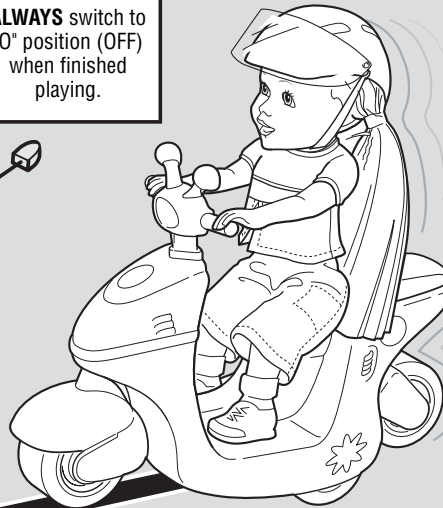
FIRST, turn switch (under scooter) to "I" position (ON).



ALWAYS switch to "0" position (OFF) when finished playing.

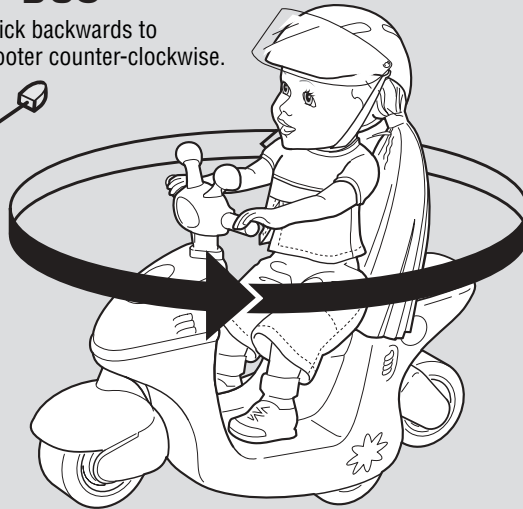
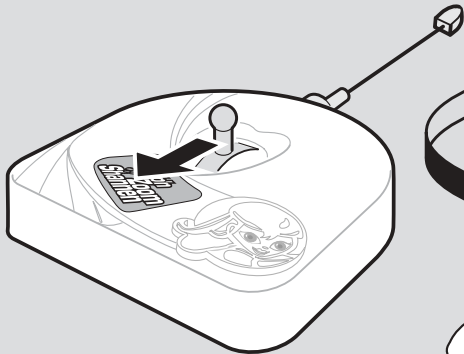
1. FORWARD

To set toy in motion, push joystick forward.



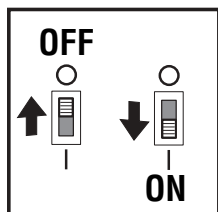
2. ROTATE 360°

Pull joystick backwards to rotate scooter counter-clockwise.



ON/OFF

- Switch to "O" position (OFF) when finished with play.
- Switch to "I" position (ON) to resume play.



QUICK TIPS

1. When the scooter does not respond, slows down, or loses range, change the batteries. Your vehicle's running time may change depending on your driving style.
2. Radio interference can make your vehicle run badly. Interference can be caused by other R/C vehicles running on the same frequency; electrical wires; large buildings; or CB radios. Try to stay away from these!
3. Operating multiple vehicles with the same frequency in close proximity will cause interference and poor performance. Zip 'n Zoom Shannen™ Doll is available in 2 different frequencies. Each sold separately and subject to availability. Use 2 different frequencies (27 MHz and 49 MHz) for racing 2 scooters.
4. Point your transmitter up – not down toward your vehicle. If your vehicle gets too far away, it won't work properly.
5. Don't drive your vehicle in sand, over bumpy/rough surfaces, or through water or snow. If your vehicle does get wet, wipe with a towel and allow to dry completely.
6. Always turn switches OFF and remove all batteries for storage.
7. If transmitter is accidentally dropped in the water, remove batteries and allow transmitter to air dry. Replace with fresh batteries before operation.

SAFETY PRECAUTIONS

⚠ CAUTION:
To prevent entanglement,
keep hair away from wheels.

Adults, this toy is recommended for children 6 years of age and older. To ensure that the child's play is both safe and fun, please review the operating instructions and these general rules with the child.

- DO NOT pick up vehicle while in motion.
- Keep fingers, hair and loose clothing away from the tires and the wheel hubs while the vehicle is switched ON.
- Adult supervision is recommended during operation of this vehicle.
- To avoid accidental operation, remove batteries when not in use.
- Play safely! DO NOT operate your scooter in the streets!

COMPLIANCE WITH FCC REGULATIONS

THIS DEVICE COMPLIES WITH PART 15 OF FCC RULES. OPERATION IS SUBJECT TO THE FOLLOWING TWO CONDITIONS: (1) THIS DEVICE MAY NOT CAUSE HARMFUL INTERFERENCE. (2) THIS DEVICE MUST ACCEPT ANY INTERFERENCE RECEIVED, INCLUDING INTERFERENCE THAT MAY CAUSE UNDESIRE OPERATION.

This equipment has been tested and found to comply with the limits for a Class B digital device, pursuant to part 15 of the FCC rules. These limits are designed to provide reasonable protection against harmful interference in a residential installation. This equipment generates, uses and can radiate radio frequency energy and, if not installed and used in accordance with the instructions, may cause harmful interference to radio communications. However, there is no guarantee that interference will not occur in a particular installation. If this equipment does cause harmful interference to radio or television reception, which can be determined by turning the equipment off and on, the user is encouraged to try to correct the interference by one or more of the following measures:

- Reorient or relocate the receiving antenna.
 - Increase the separation between the equipment and receiver.
 - Consult the dealer or an experienced radio/TV technician for help.
- Mattel Inc., 333 Continental Blvd., El Segundo, CA, (310) 252-2400

⚠ CAUTION: Changes or modifications not expressly approved by the manufacturer responsible for compliance could void the user's authority to operate the equipment.

Radio-controlled toy from up to 30 feet (9 m) away. This product operates at a frequency of 49 MHz.

90-DAY LIMITED WARRANTY TYCO® R/C PRODUCTS

Mattel, Inc. warrants to the original consumer purchaser that this product will be free of defects in material and workmanship for ninety (90) days (unless specified in alternate warranties) from the date of purchase. Mattel will repair or replace the product, at our sole option, in the event of such a defect within the warranty period. In the event of a defect covered under this warranty, first call the toll-free number listed below. Many problems can be solved in this manner. If necessary, you will be instructed to return the product, postage prepaid and insured, to the address below. Enclose your name, address, dated sales receipt, and a brief explanation of the defect. Repair or replacement, and return shipment, will be free of charge. Please return only the defective part or unit, packed securely. This warranty does not cover damage resulting from unauthorized modification, accident, misuse or abuse. If the product is returned without a dated sales receipt the product may be excluded from coverage under this warranty. Mattel's liability for defects in material and workmanship under this warranty shall be limited to repair or replacement, at our sole option, and in no event shall we be responsible for incidental, consequential, or contingent damages (except in those states that do not allow this exclusion or limitation). This warranty is exclusive, and is made in lieu of any express or implied warranty. **Valid only in U.S.A.** This warranty gives you specific legal rights and you may have other rights, which vary from state to state. Some states do not allow the exclusion of incidental or consequential damages, so the above exclusions or limitations may not apply to you.

TOLL-FREE NUMBER: 1-888-557-TYCO (8926) (valid only in U.S.A.) Hours: 8:00 A.M. - 5:00 P.M. Eastern Time; Monday - Friday. Expect some delay in January following the holiday season. Please be patient and keep trying the toll-free number.

ADDRESS FOR RETURNS:
CONSUMER RELATIONS
636 GIRARD AVENUE
EAST AURORA, NY 14052

CONSUMER INFORMATION

MATTY MATTEL™ TOYS



YOU CAN TELL IT'S MATTEL™ CALL us toll-free or write with any comments or questions about our products or service. Monday-Friday 8:00 a.m.-6:00 p.m. Eastern Time. Outside U.S.A., see telephone directory for Mattel listing.

Consumer Relations, Mattel, Inc.
333 Continental Blvd.
El Segundo, CA 90245 USA

1(800)524-TOYS

WE ARE DEDICATED TO QUALITY PRODUCTS.