

For product sold in USA

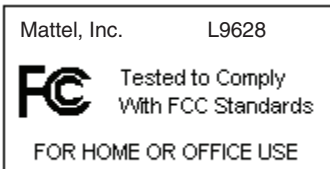
This device complies with Part 15 of the FCC Rules.

Operation is subject to the following two conditions:

(1) This device may not cause harmful interference, and (2) this device must accept any interference received, including interference that may cause undesired operation.

- This equipment has been tested and found to comply with the limits for a Class B digital device, pursuant to part 15 of the FCC rules. These limits are designed to provide reasonable protection against harmful interference in a residential installation. This equipment generates, uses and can radiate radio frequency energy and, if not installed and used in accordance with the instructions, may cause harmful interference to radio communications. However, there is no guarantee that interference will not occur in a particular installation. If this equipment does cause harmful interference to radio or television reception, which can be determined by turning the equipment off and on, the user is encouraged to try to correct the interference by one or more of the following measures:
- Reorient or relocate the receiving antenna.
- Increase the separation between the equipment and receiver.
- Connect the equipment into an outlet on a circuit different from that to which the receiver is connected.
- Consult the dealer or an experienced radio/TV technician for help.

NOTE: Changes or modifications not expressly approved by the manufacturer responsible for compliance could void the user's authority to operate the equipment.



For product sold in Canada • Pour les produits vendus au Canada

THIS CLASS B DIGITAL APPARATUS COMPLIES WITH CANADIAN ICES-003.

CET APPAREIL NUMÉRIQUE DE LA CLASSE B EST CONFORME À LA NORME NMB-003 DU CANADA.

(VALID FOR CANADA ONLY • VALABLE AU CANADA SEULEMENT)

Operation is subject to the following two conditions :

(1) this device may not cause interference, and (2) this device must accept any interference, including interference that may cause undesired operation of the device.

L'utilisation de ce dispositif est autorisée seulement aux conditions suivantes :

(1) Il ne doit pas produire de brouillage et (2) il doit pouvoir tolérer tout brouillage radioélectrique reçu, même si ce brouillage est susceptible de compromettre son fonctionnement.

Consumer Service and/or Technical Support numbers for Mattel Interactive product:

- 1 (888) MATTEL9
- 1 (888) 628-8359
- 1 (888) MEDIA11 and 1 (888) 633-4211 for Canada
- 1 (902) 262 513 for Australia



Protect the environment by not disposing of this product with household waste (2002/96/EC).
Check your local authority for recycling advice and facilities.

CONSUMER INFORMATION

Need Assistance? Visit service.mattel.com or call 1-800-524-8697 (US and Canada only), M-F 9AM - 7PM & SAT 11AM - 5PM, Eastern.

SERVICE.MATTEL.COM

Mattel Canada Inc., Mississauga, Ontario L5R 3W2. You may call us free at/ Composez sans frais le 1-800-524-8697. • Mattel U.K. Ltd., Vanwall Business Park, Maidenhead SL6 4UB. • Mattel Australia Pty., Ltd., Richmond, Victoria. 3121. Consumer Advisory Service - 1300 135 312. • Mattel East Asia Ltd., Room 1106, South Tower, World Finance Centre, Harbour City, Tsimshatsui, HK, China. Diimport & Diedarkan Oleh: Mattel SEA Ptd Ltd.(993532-P) Lot 13.5, 13th Floor, Menara Lien Hoe, Persiaran Tropicana Golf Country Resort, 47410 PJ. Tel: 03-78803817, Fax: 03-78803867. • Mattel, Inc., 333 Continental Blvd., El Segundo, CA 90245 U.S.A. Consumer Relations 1 (800) 524-8697.

5+

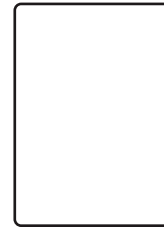
Barbie

INSTRUCTIONS

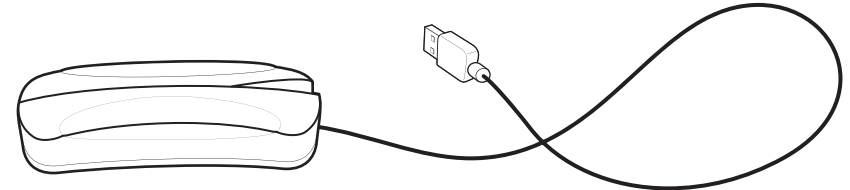
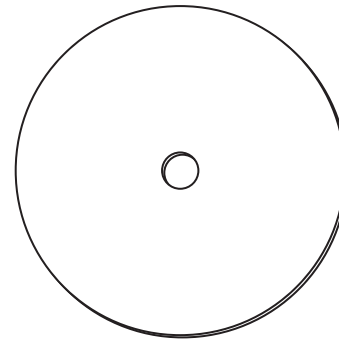
L9628-0920G1



CONTENTS

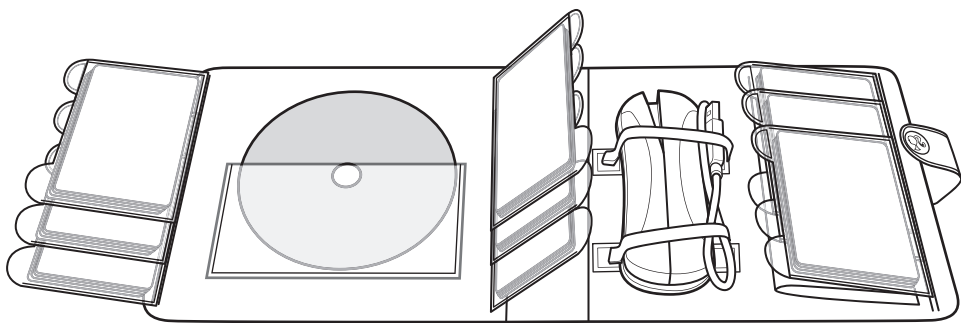


50 fashions
5 characters
5 backgrounds



Please remove everything from the package and compare to the contents shown here. If any items are missing, please contact your local Mattel office. Keep these instructions for future reference as they contain important information.

Create lots and lots of fashion combinations!



Installing the Game

1. Close all applications.
2. Insert the iDesign™ Ultimate Stylist™ CD-ROM into your CD-ROM drive.
3. If AutoPlay is enabled, click the install icon.
 - If AutoPlay is not enabled, click Start and then Run from the Windows Start menu. Type D:\install.exe (D: refers to your CD-ROM drive). If your CD-ROM drive is not “D”, type the appropriate letter.
4. Follow the installation instructions on the screen.
 - After installation is complete, you'll find iDesign™ Ultimate Stylist™ icon in the Barbie® program group.
 - There will also be a shortcut on your desktop if you chose to install it.

Running the Game

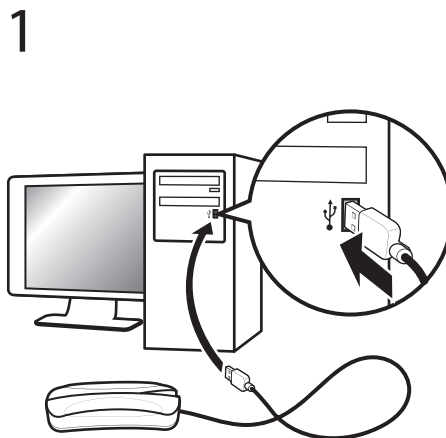
- Click Start/ All Programs/ Barbie®/ iDesign™ Ultimate Stylist™ or the shortcut icon on your desktop if you chose to install it.

Uninstalling the Game

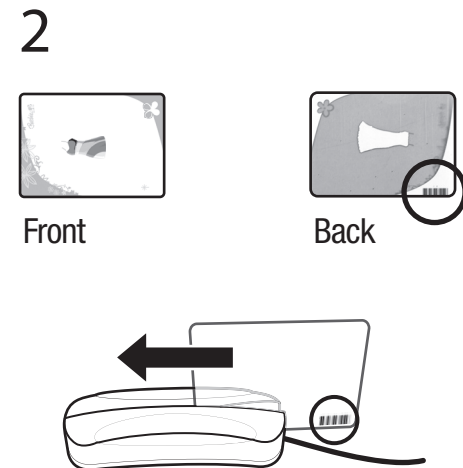
1. Click on start menu.
2. Click on control panel.
3. Click on Add or Remove Programs.
4. Find and highlight Barbie® iDesign™ Ultimate Stylist™ on the list of programs.
5. Click the remove button.

MINIMUM SYSTEM REQUIREMENTS

Windows® 2000/ XP/ Vista
Pentium® III (or equivalent) 450 MHz or faster processor
128 MB RAM (256 MB recommended)
24x speed CD-ROM drive
800 MB Hard Drive Space
24-bit color @ 800x600 screen resolution
DirectX® 9.0c or higher
DirectX® 9.0-compatible video card with 32 MB memory
DirectX® compatible sound card
USB 1.1 port; NOT MAC O/S COMPATIBLE.
iDesign™ fashion cards (sold separately) work with this CD-ROM.



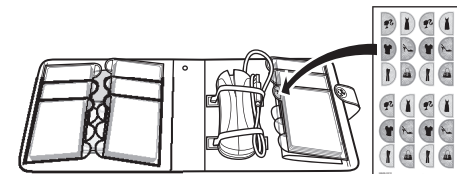
Insert CD-ROM into computer and install CD-ROM software (see installation directions on left page). Plug the card scanner into a USB port, shown above.



Slide card through scanner slot, making sure the BARCODE is facing towards you. An LED will flash four (4) times to show that the barcode was scanned correctly.



Image on card shows up on computer screen. Keep scanning in cards to build a complete look. The image is imported into any of several games on CD-ROM.



Identify your cards by applying the stickers onto the vinyl card holders.

For complete game-play instructions please see downloaded Barbie® iDesign Ultimate Stylist Manual.