



USER'S MANUAL

PCMCIA Port & Modem Auto Installation Guide

Maxon Electronics Australia Pty. Ltd.

Version : 1.0

Date : Sep. 06, 2003

**Maxon Australia Proprietary : Restricted
Distribution**

This document is the sole and exclusive property of Maxon Australia Not to be distributed or divulged without prior written

36A Gibson Ave.

Padstow NSW

Australia 2211

URL: <http://www.maxon.com.au>

PCMCIA Port & Modem Auto Installation Guide

All data and information contained in or disclosed by this document are confidential and proprietary information of Maxon Electronics Australia Pty. Ltd., and all rights therein are expressly reserved. By accepting this material, the recipient agrees that this material and the information contained therein are held in confidence and in trust and will not be used, copied, reproduced in whole or in part, nor its contents revealed in any manner to others without the express written permission of Maxon Electronics Australia Pty. Ltd..

This information provided in this document is provided on an "as is" basis.

In no event will Maxon Electronics Australia Pty. Ltd. be liable for any damages arising directly or indirectly from any use of information contained in this document.

Application information – Applications that are described herein for any of these products are for illustrative purposes only. Maxon Electronics Australia Pty. Ltd. makes no representation or warranty that such applications will be suitable for the specified use without further testing or modification.

Disclaimers

Life support – These products are not designed for use in life support appliances or systems where malfunction of these products can reasonably be expected to result in personal injury.

Maxon Electronics Australia Pty. Ltd. customers using or selling these products for use in such applications do so at their own risk and agree to fully indemnify Maxon Electronics Australia Pty. Ltd. for any damages resulting from such application.

Right to make change - Maxon Electronics Australia Pty. Ltd. Reserves the right to make changes, without notice, in the products, including circuits and software, described or contained herein in order to improve design and/or performance.

Contact Information

If you have any technical queries about this manual, please contact.

engineering@maxon.com.au

Table of contents

1. Range to setup 4

1.1. Compositions of Setup folder and files 4

2. Setup PCMCIA 7

2.1. Setup PCMCIA 7

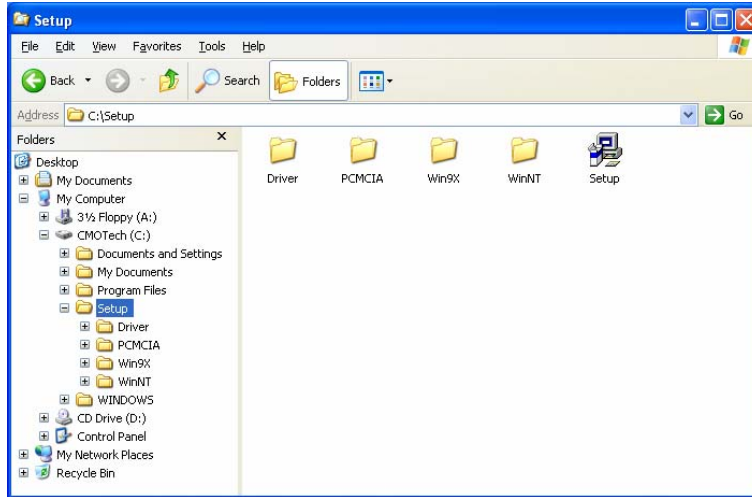
3. Uninstall PCMCIA 11

3.1. Uninstall PCMCIA 11

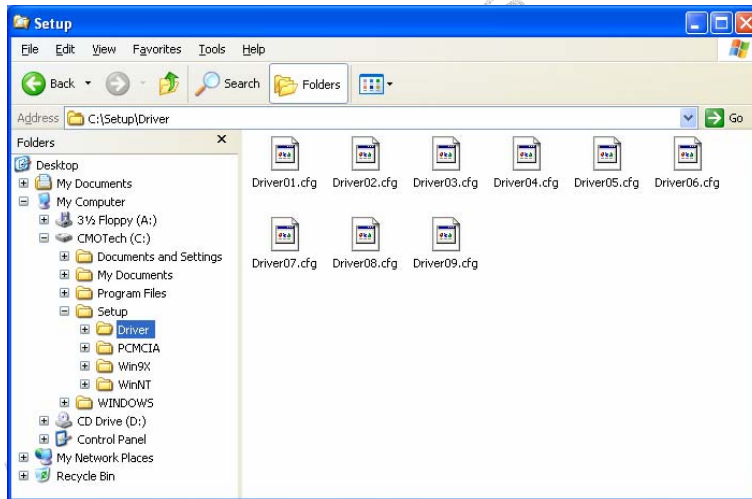
Maxon Electronics Australia Pty. Ltd.

1. Range to setup

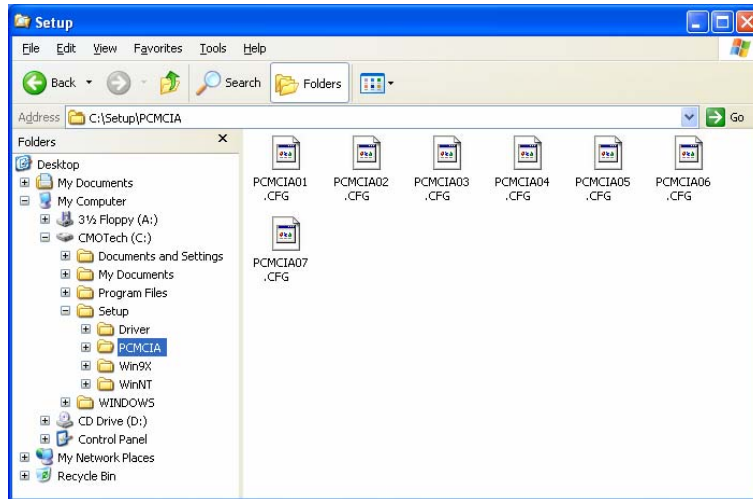
1.1. Compositions of Setup folder and files



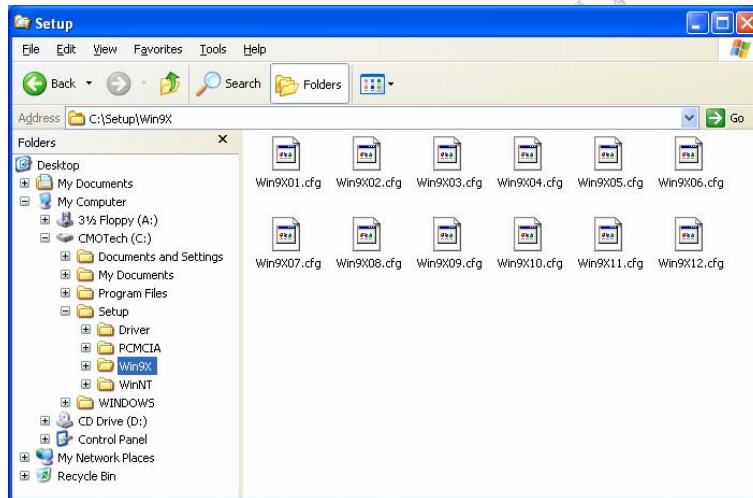
1.1.1. Driver folder



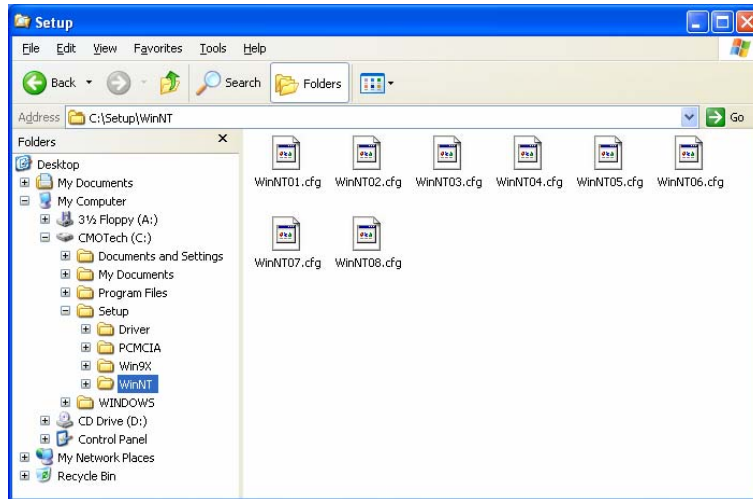
1.1.2. PCMCIA folder



1.1.3. Win9X folder



1.1.4. WinNT folder



2. Setup PCMCIA

2.1. Setup PCMCIA

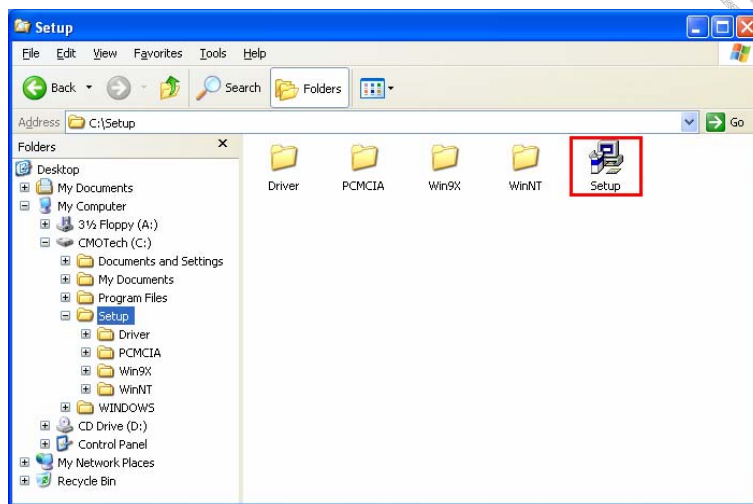
Do not insert your PCMCIA card before execute the program of "Setup.exe".

If you already insert your PCMCIA card to your PC, remove your PCMCIA card and then double click the icon of "Setup.exe".

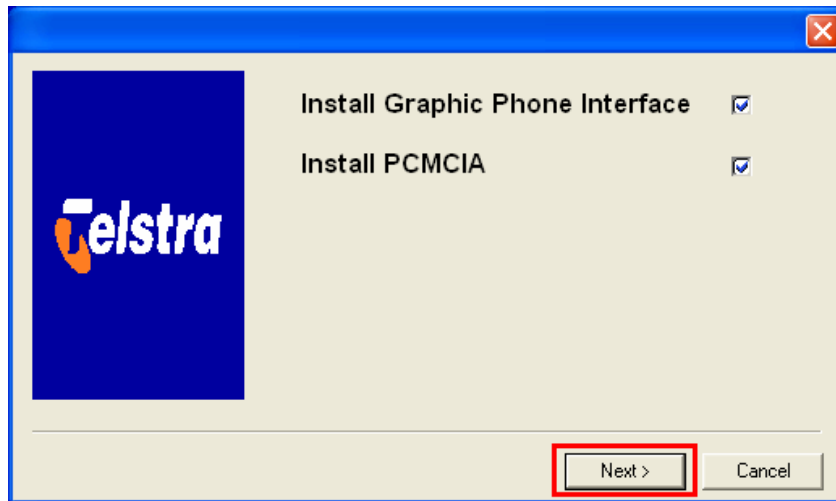
The installation procedures of "Setup.exe" are all the same in Windows 98 Original Edition, Windows 98 Second Edition, Windows ME, Windows 2000 or Windows XP.

2.1.1. Start setup

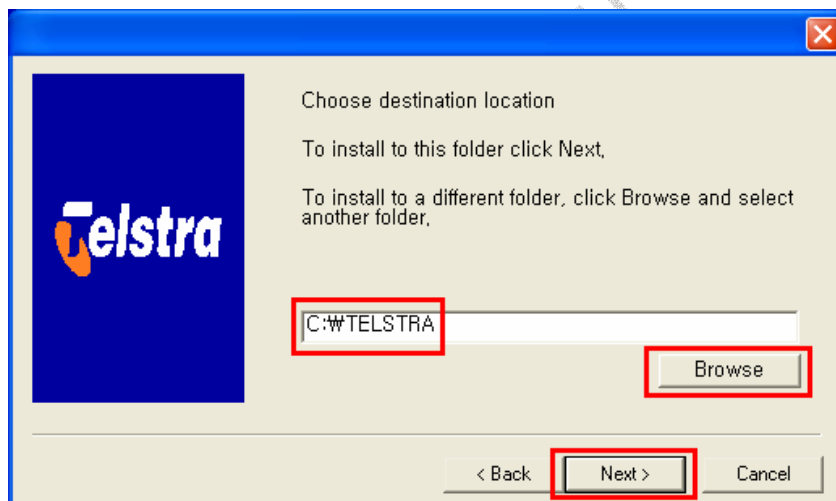
Execute the Setup program.



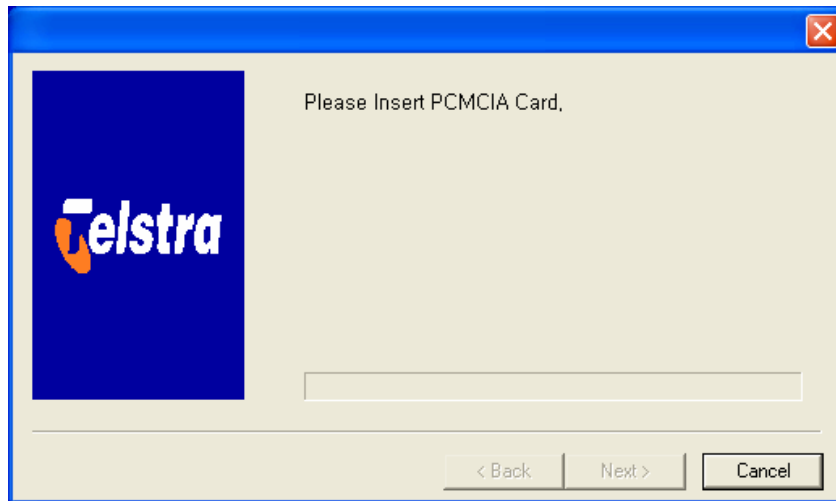
2.1.2. Select Setup



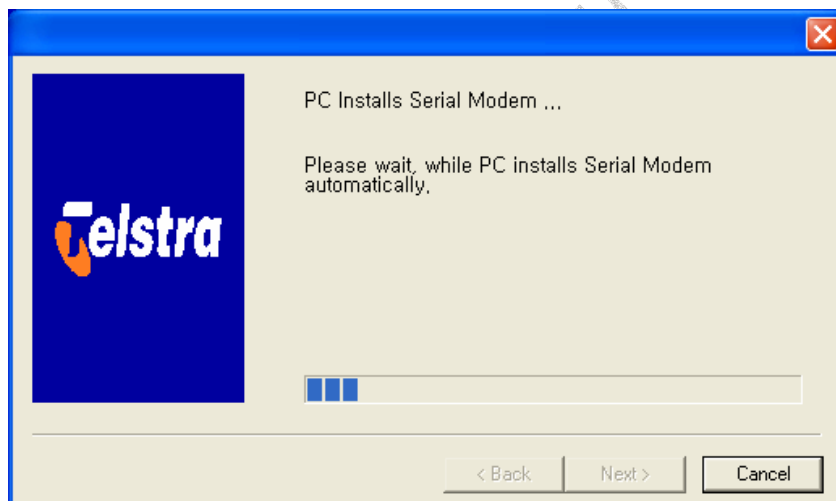
2.1.3. Choose Location



2.1.4. Insert PCMCIA Card



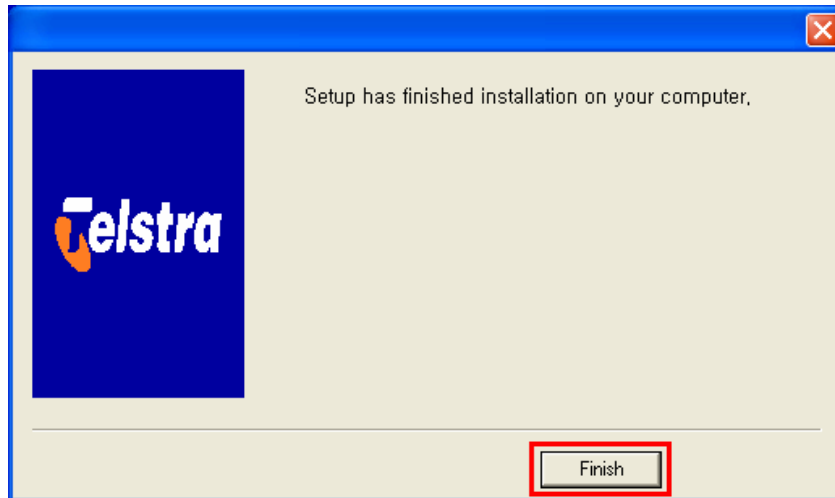
2.1.5. Install Serial Modem



2.1.6. Setup Complete

On inserting PCMCIA card, "Setup" program will install the PCMCIA Port, PCMCIA Modem and user interface program.

Click "Finish" button to complete installation.



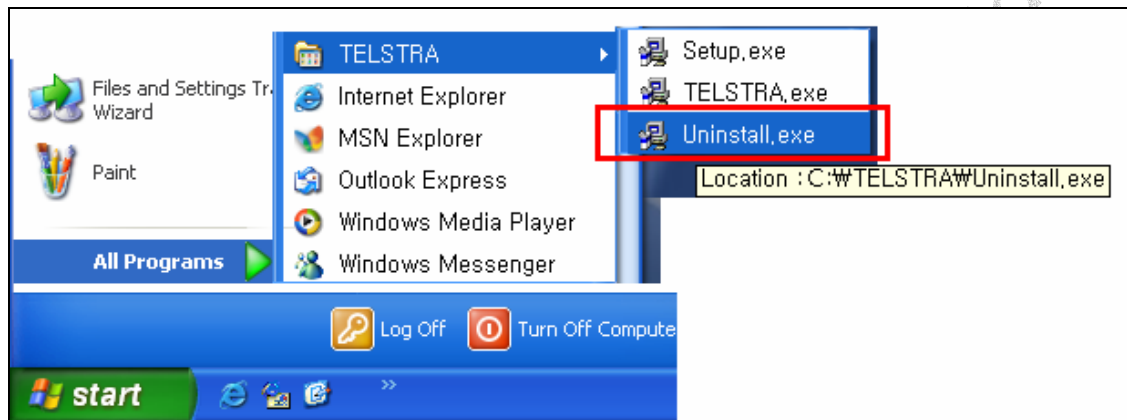
3. Uninstall PCMCIA

3.1. Uninstall PCMCIA

To uninstall PCMCIA Card driver, click "Uninstall.exe".

3.1.1. Start uninstall

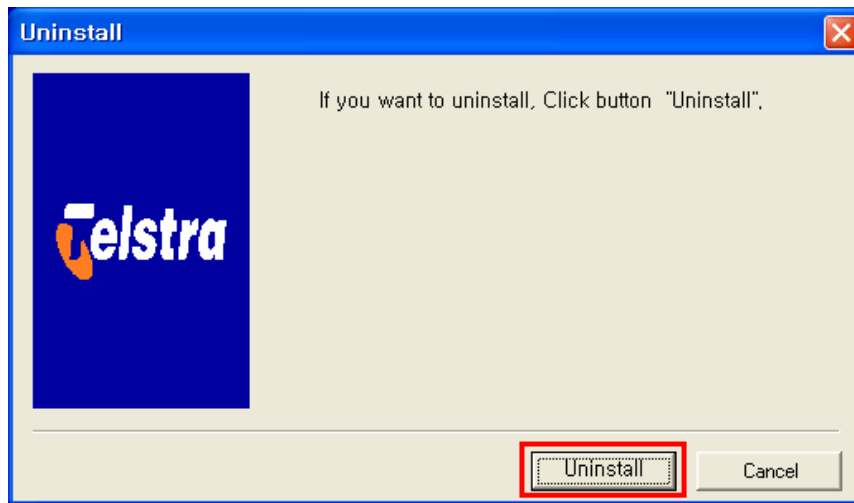
Execute the Uninstall program.



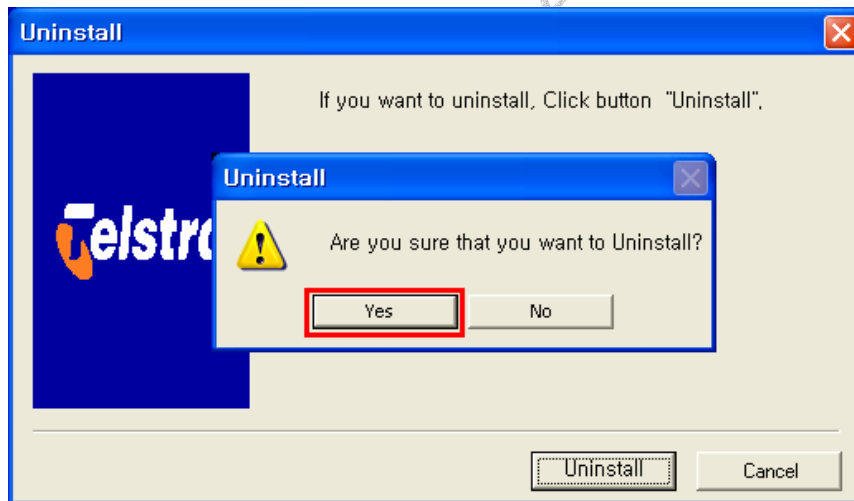
Uninstall Program delete PCMCIA Port, PCMCIA Modem and Telstra Program.

3.1.2. Uninstall

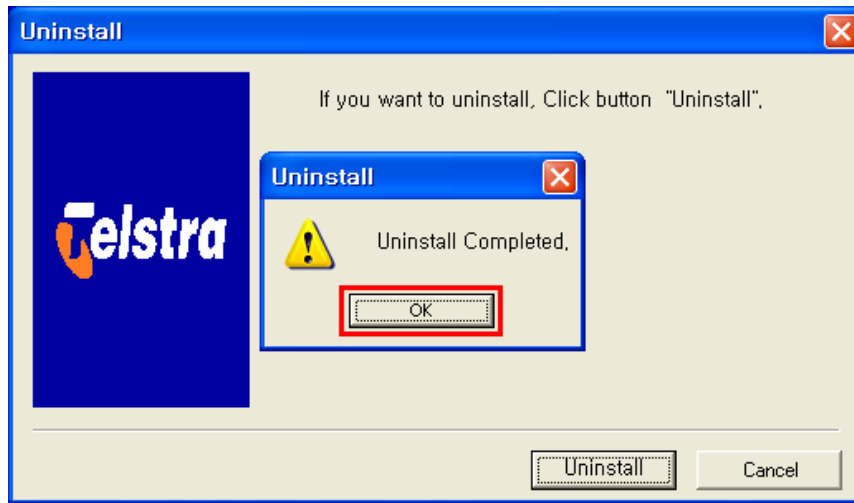
Click the button "Uninstall".



Click the button "Uninstall".



3.1.3. Uninstall Complete



Maxon Electronics Australia Pty. Ltd.