

# Table of Contents

1	User Information.....	2
2	Product Overview.....	4
	2.1 Package list.....	4
	2.2 Product Appearance.....	4
	2.3 Remote Control .....	5
	2.4 First Time Usage.....	7
3	Main Functions .....	9
	3.1 Setup .....	9
	3.2 Browsing Files and Media Playback .....	14
	3.3 Favorites Manager.....	17
	3.4 3D Movie Playback.....	17
	3.5 Internet Media .....	18
	3.6 Web Browser of Casablanca .....	18
	3.7 Movie Jukebox.....	19
	3.8 DLNA DMR.....	21
	3.9 A/V Streaming via Network.....	22
	3.10 A/V Streaming via UPnP-server.....	22
	3.11 Music playlist & Photo Album management.....	23
	3.12 File Copy/Delete/Move/Rename .....	23
	3.13 NAS function .....	24
	3.14 Transmission.....	25
	3.15 FTP Server .....	25
	3.16 Firmware upgrade.....	25
4	Specifications.....	26
5	Copyrights and Trademarks .....	27
6	Warranty .....	27
7	GPL Statement .....	27

# 1 User Information

This player's design and manufacture has your safety in mind. In order to safely and effectively use this player, please read the following before usage.

## 1.1 Usage cautions

User should not modify this player. If commercial hard disk is being used, the environmental temperature should be within +5°C ~ +35°C.

## 1.2 Power

The player's power voltage: DC 12V.

When using this player, please connect the supplied AC adapter or AC adapter cable to the player's power jack. When placing the adapter cable, make sure it can not get damaged or be subject to pressure. To reduce the risk of electric shock, unplug the adapter first before cleaning it. Never connect the adapter to the player in a humid or dusty area. Do not replace the adapter or cable's wire or connector.

## 1.3 Repair

If the player has a problem, you should take it to an appointed repair center and let the specialists do the repair, never repair the player yourself, you might damage the player or endanger yourself or your data.

## 1.4 Disposing of the player

When you dispose of the player, be sure to dispose it appropriately. Some countries may regulate disposal of electrical device, please consult with your local authority.

## 1.5 Hard disk cautions

The player uses an internal hard disk for data storage, in normal case, format or repair is not required.

You should carefully read the < Frequently Asked Questions > chapter, and check our website for latest information before formatting the hard disk.

- Physical impact may create bad sector in the hard disk, you can use CHKDSK to fix the problem.
- All data stored in the player may be lost due to physical impact, electrical shock, power lost, HDD format etc. Please backup your data.
- It is suggested to do defragment after a long period of usage.
- Regularly backup the data in the hard disk so that it can be recovered in the event of data corruption or loss. Our company takes no responsibility for loss of data stored on the hard disk.

## 1.6 Others

When using this player, please do not let the player come into contact with water or other liquid, if water is accidentally spilled on the player, please use a dry cloth to absorb the spillage.

Electronic products are vulnerable, when using please avoid shaking or hitting the player, and do not press the buttons too hard.

- ✧ Do not let the player come into contact with water or other liquid.
- ✧ Do not disassemble the player, repair the player or change the design of the player, any damage done will not be included in the repair policy.
- ✧ Do not press the buttons of the player too hard.
- ✧ Avoid hitting the player with hard object, avoid shaking the player, and stay away from magnetic fields.
- ✧ During electrostatic discharge and the strong electromagnetic field, the product will malfunction, then unplug the power cable and the product will return to normal performance next time it is powered on.
- ✧ The product shall not be exposed to dripping or splashing, and no objects filled with liquids, such as vases, shall be placed on the product.
- ✧ Where the MAINS plug or an appliance coupler is used as the disconnect device, the disconnect device shall remain readily operable.

Warning: Changes or modifications to this unit not expressly approved by the party responsible for compliance could void the user's authority to operate the equipment.

NOTE: This equipment has been tested and found to comply with the limits for a Class B digital device, pursuant to Part 15 of the FCC Rules. These limits are designed to provide reasonable protection against harmful interference in a residential installation. This equipment generates, uses and can radiate radio frequency energy and, if not installed and used in accordance with the instructions, may cause harmful interference to radio communications.

However, there is no guarantee that interference will not occur in a particular installation. If this equipment does cause harmful interference to radio or television reception, which can be determined by turning the equipment off and on, the user is encouraged to try to correct the interference by one or more of the following measures:

- ✧ Reorient or relocate the receiving antenna.
- ✧ Increase the separation between the equipment and receiver.
- ✧ Connect the equipment into an outlet on a circuit different from that to which the receiver is connected.
- ✧ Consult the dealer or an experienced radio/TV technician for help.

Shielded cables must be used with this unit to ensure compliance with the Class B FCC limits.

The antenna(s) used for this transmitter must be installed to provide a separation distance of at least 20 cm from all persons and must not be co-located or operating in conjunction with any other antenna or transmitter.

## 2 Product Overview

### 2.1 Package list

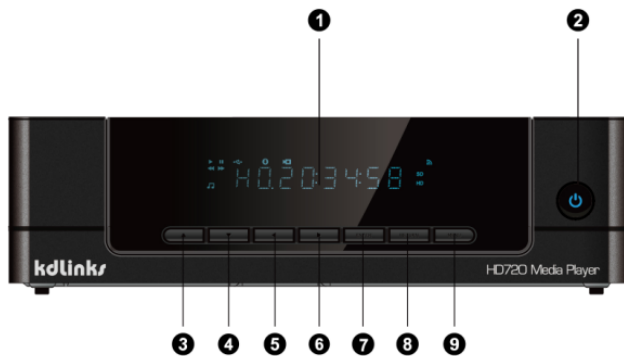
Part	Quantity
Player	
USB 3.0 cable	
AC/DC adaptor	
Quick Installation Guide	

**Note:**

The actual contents in the package might be different from the packing list in this manual.

### 2.2 Product Appearance

#### Front Panel

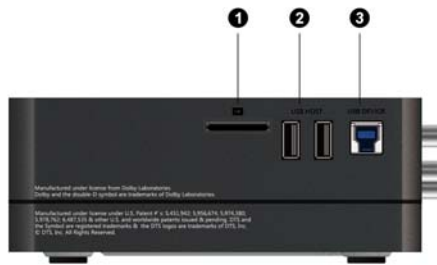


- 1. VFD display area
- 2. Power button & indicator  
Power indicator

Mode	Status
Working	Blue
Standby	Red

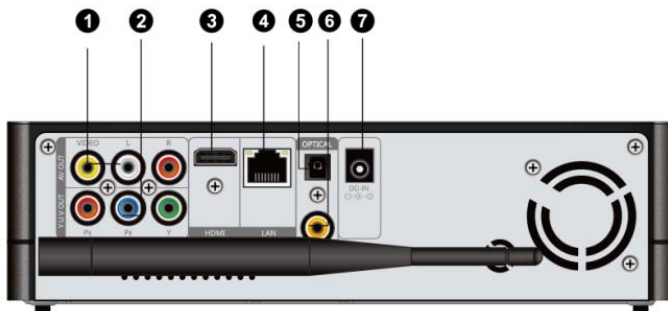
- 3-6 navigational buttons
- 7. Enter button
- 8. Return button
- 9. Menu button

## Side Panel



1. Memory Card slot
2. USB 2.0 HOST port
3. USB 3.0 Device port

## Back Panel



1. A/V OUT jack
2. Y/Pb/Pr OUT jack
3. HDMI jack
4. Gigabit LAN socket
5. S/PDIF Optical jack
6. S/PDIF Coaxial jack
7. Power input

## 2.3 Remote Control

<p>The diagram shows a remote control with buttons numbered 1 through 36. Buttons 1-9 are on the left side, and buttons 31-36 are on the right side. The central area contains buttons 10-30. Button 1 is the Power button, 2 is the numeric keypad, 3 is Shuffle, 4 is VOL-, 5 is Mute, 6 is Menu, 7 is Home, 8 is Navigational buttons, 9 is Stop, 10 is Play/Pause, 11 is FR, 12 is FF, 13 is Red, 14 is Green(EPG), 15 is Setup, 16 is TV SYSSlow, 17 is Goto, 18 is Slow, 19 is Browser, 20 is Edit, 21 is Copy, 22 is A-B, 31 is the OK button, 32 is the directional pad, 33 is the Home button, 34 is the Mute button, 35 is the Stop button, and 36 is the Power button.</p>	1. Power	2. Numeric buttons
	3. Shuffle.	4. VOL-
	5. Mute	6. Menu
	7. Home	8. Navigational buttons
	9. Stop	10. Play/Pause
	11. FR	12. FF
	13. Red	14. Green(EPG)
	15. Setup	16. TV SYSSlow
	17. Goto	18. Slow
	19. Browser	20. Edit
	21. Copy	22. A-B

		23. Angle	24. Zoom
		25. Audio	26. Subtitle
		27. Yellow(TTX)	28. Blue
		29. Prev	30. Next
		31. Info	32. OK
		33.Back	34. VOL+
		35. Repeat	36.Eject
No.	Button	Function	
1	<b>Power</b>	Press to enter standby mode or wake up.	
2	<b>Numeric buttons</b>	Press to enter channel numbers or numeric input when changing settings.	
3	<b>SHUFFLE</b>	Press to shuffle the music.	
4	<b>VOL-</b>	Press to decrease the volume.	
5	<b>Mute</b>	Press to mute audio output, and press again to resume.	
6	<b>Menu</b>	Press to enable the option menu, where you can change the review mode of file manager and media library; Press to display or hide the option menu during playback.	
7	<b>Home</b>	Press to enter the home screen.	
8	<b>Navigational buttons</b>	Press the arrow buttons to select menu options, and the <b>OK</b> button to confirm. Press Up/Down to rotate a photo during photo playback.	
9	<b>Stop</b>	Press to stop playback.	
10	<b>Play/ Pause</b>	Press to begin/pause playback.	
11	<b>FR</b>	Press to fast rewind the current playback. Press repeatedly to select speeds	
12	<b>FF</b>	Press to fast forward the current playback. Press repeatedly to select speeds.	
13	<b>RED</b>	Function is available in virtual keyboard.	
14	<b>Green</b>	Function is available in virtual keyboard.	
15	<b>Setup</b>	Press to enter the setup menu.	
16	<b>TV SYS.</b>	Press to switch between NTSC, PAL, 480P, 576P, 720P, 1080I, and 1080P.	
17	<b>Goto</b>	Press to jump to a specific point on a title. Specify the point using Title, Chapter and Time.	
18	<b>Slow</b>	Press to play back in slow motion. Press the <b>PLAY</b> button to resume regular playback.	
19	<b>Browser</b>	Press to enter file manager.	
20	<b>EDIT</b>	Press to copy/delete/rename/move file in file manager.	
21	<b>Copy</b>	Press to enter file selecting menu.	
22	<b>A-B</b>	Press to set the beginning and end points of a section to repeat.	
23	<b>Angle</b>	Press to change the view angle during DVD (with multi-angle) playback.	
24	<b>Zoom</b>	Press to zoom the image (photo or video).	
25	<b>Audio</b>	Press to select an audio track.	
26	<b>Subtitle</b>	Press to set subtitle options. You can change the color/size/offset/text encoding of subtitle.	
27	<b>Yellow</b>	Reserved button. No function has been assigned to it yet.	

28	<b>Blue</b>	Press to open/close USB DVD-rom.
29	<b>Prev</b>	Press to view the previous file / page up.
30	<b>Next</b>	Press to view the next file / page down.
31	<b>Info</b>	Press to display current status. Press during playback, an onscreen display appears showing track number and time elapsed/remaining.
32	<b>OK</b>	Function is available in virtual keyboard.Press <b>OK</b> button to confirm.
33	<b>BACK</b>	Press to return to the previous screen while navigating menus.
34	<b>Vol+</b>	Press to increase the volume.
35	<b>Repeat</b>	Press to set repeat option.
36	<b>Eject</b>	Press to safely remove the USB device.

## 2.4 First Time Usage

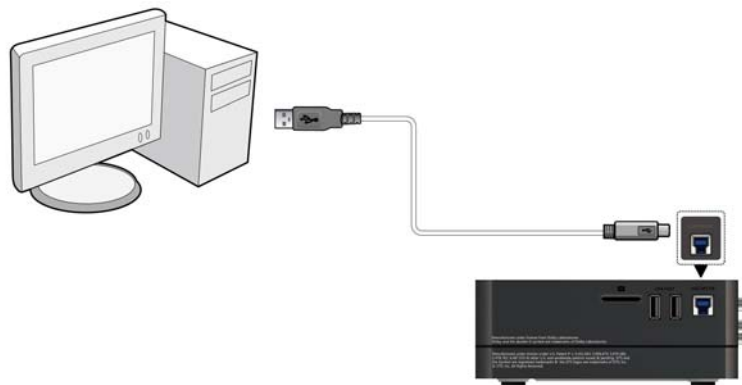
### 2.4.1 Connection

#### Connect to Computer

This product can be used as a portable external storage device with its built-in SATA interface and high-speed USB 3.0.

**Method 1**, Install an internal hard disk → Plug in power adaptor to the player's DC IN jack → Connect this player to PC with the USB3.0 cable → Press U button on back panel of the player.

**Method 2**, Install an internal hard disk → Power on this player → Connect this player to PC with the USB3.0 cable.



#### **Note:**

A USB 3.0 cable is necessary to use this product as a portable external storage device. USB 2.0 cable is useless.

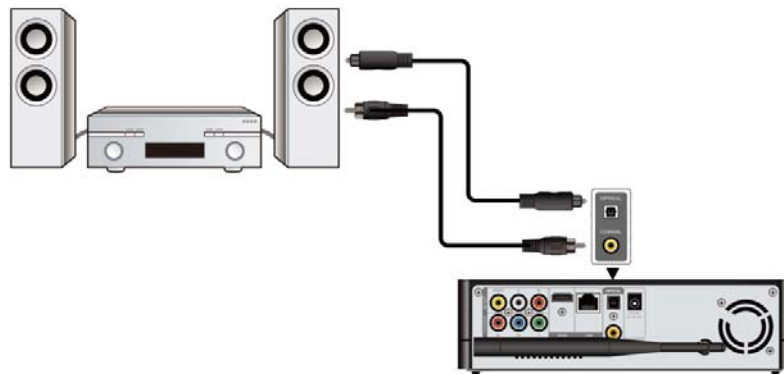
#### connection the TV

Depending on the jacks on your TV, select the connection mode. We suggest you to use HDMI output (High Definition, up to 1080p). Picture quality will be improved compared to using the component video output (use Y/Pb/Pr OUT jack) or the composite video output (Standard Definition, use A/V OUT jack).



### **Digital Audio Device connection**

Except for HDMI jack, this player can output digital audio to amplifier through SPDIF coaxial or optical jack. Please refer to '**3.1.2 Changing Audio settings**' for more details.



### **2.4.2 Menu language**

The system language of this player can be set to English or other languages. Change the language you wish via **Setup → System → Menu language**, the selected language will take effect immediately.

### **2.4.3 HDD Format**

For users who wish to install a new SATA HDD into the player, first you need format the hard disk on the player before usage. You can format your HDD via **Setup → System → Format** menu.

**Note:**

HDD format will remove all data stored on the hard disk drive. Please take care and backup your data in advance!



## 3 Main Functions

### 3.1 Setup

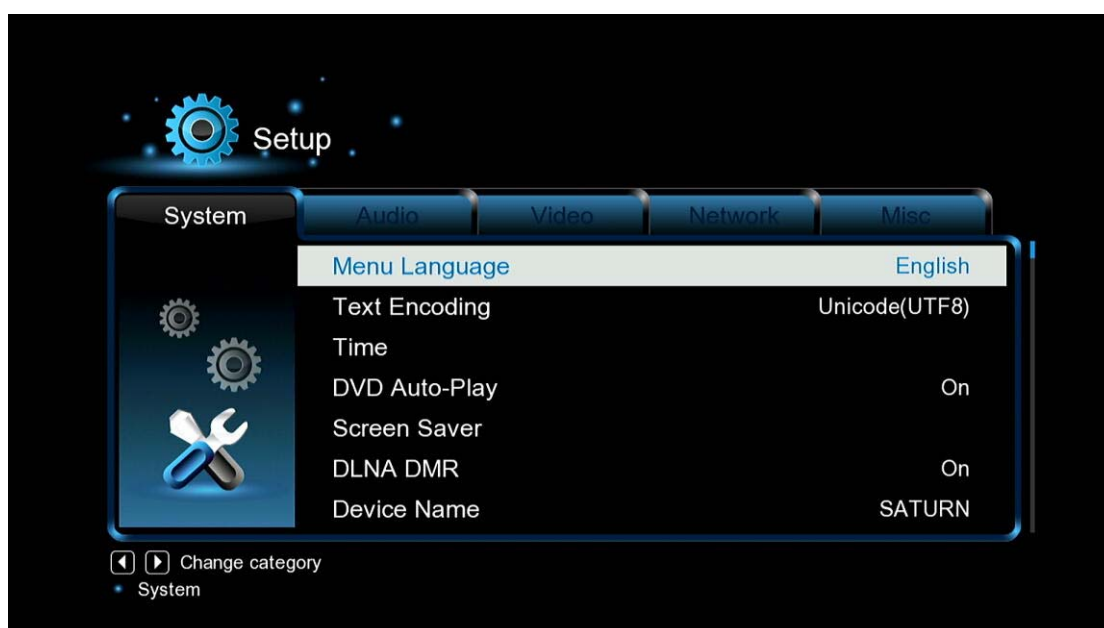
The Setup menu allows you to personalize and configure the preferences for your player.

- Select the Setup icon on the home screen, or press **Setup** button on the remote control.
- Use the **Left/Right** navigational buttons to select an option, and then press **OK**.



There are five setup options, including **System**, **Audio**, **Video**, **Network** and **MISC**.

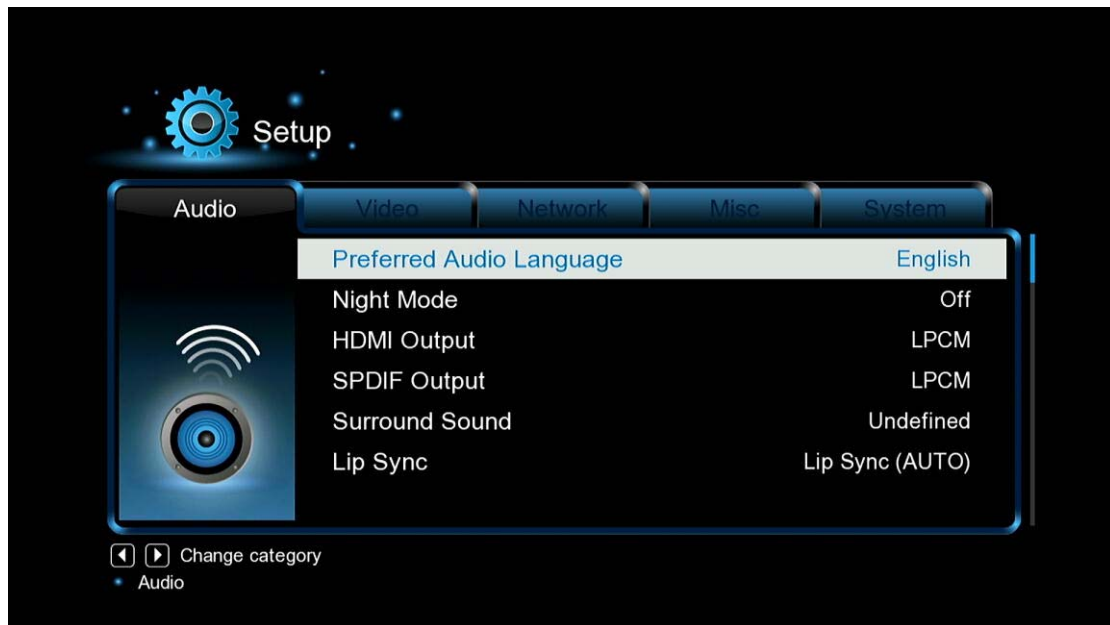
#### 3.1.1 Changing System Settings



Option	Description
<b>Menu Language</b>	- Select to choose the OSD (On-Screen Display) language.
<b>Text encoding</b>	- Select to set the text encoding option (subtitle display)
<b>Time</b>	- Here you can select the right time zone.
<b>Screen Saver</b>	- Here you can set the timing of screen saver and change screen saver.

<b>DLNA DMR</b>	- Digital Media Renderer, can play content received from a <b>digital media controller (DMC)</b> , which will find content from a <b>digital media server (DMS)</b>
<b>Device Name</b>	- Select to name DLNA DMR.
<b>Scan storage</b>	- Set the scan mode of media library.
<b>Format</b>	- Follow the on-screen information to format your HDD.
<b>BD-Lite Menu</b>	- Here you can open the BDMV navigation menu during BDMV folder or BD ISO playback. And BD-J is not supported.
<b>Restore Default</b>	- Restore to factory defaults.

### 3.1.2 Changing Audio Settings

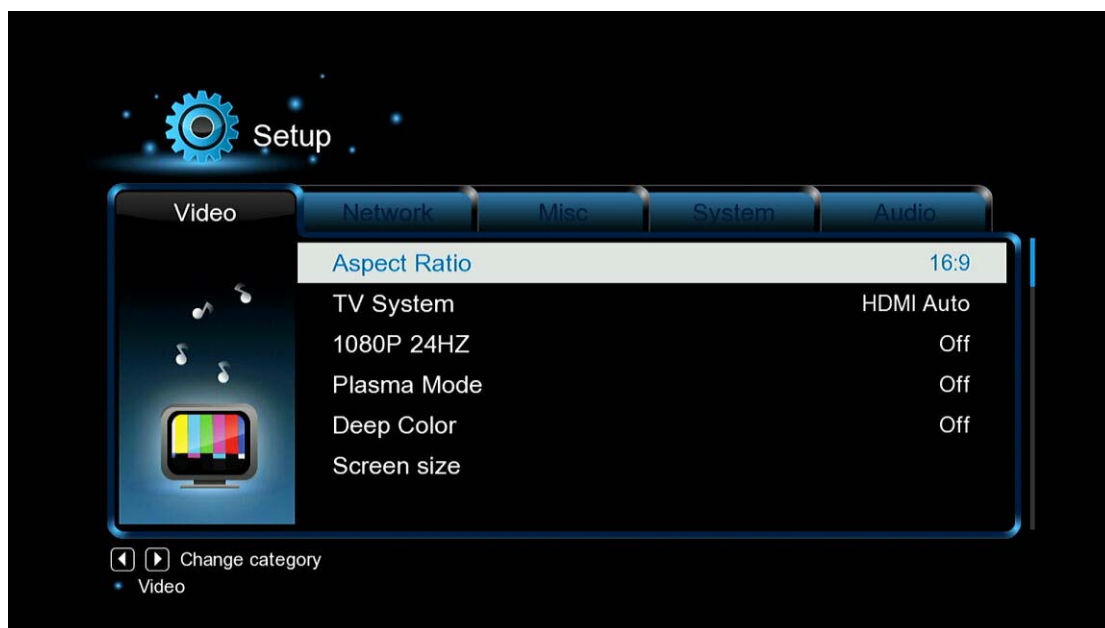


Option	Description
<b>Night Mode</b>	- Choose among <b>Off / On / Comfort</b> . If the option is turned on, the audio output volume will be decreased to make you more comfortable.
<b>HDMI Output</b>	- Choose among <b>LPCM, RAW</b> and <b>Auto</b> .
<b>SPDIF Output</b>	- Choose among <b>LPCM, RAW</b> .
<b>Surround Sound</b>	- Please select 5.1CH when your amplifier is a 5.1ch one, and select HD audio while your amplifier is a 7.1ch one.

**Note:** In raw mode, Dolby TrueHD, Dolby Digital Plus, Dolby Digital, DTS sound can be by passed to the HDMI TV or Digital amplifier.

Due to the bandwidth requirement, Dolby TrueHD and Dolby Digital Plus sound only can be by passed through HDMI cable, also the TV system must up to 720p or above.

### 3.1.3 Changing Video Settings



Option	Description
<b>Aspect Ratio</b>	<ul style="list-style-type: none"> <li>- <b>Pan Scan 4:3:</b> Display a wide picture on the entire screen and cuts off the redundant portions. Select when a standard 4:3 TV is connected.</li> <li>- <b>Letter Box 4:3:</b> Display a wide picture with two black borders on the top and bottom of 4:3 screen. Select when a standard 4:3 TV is connected.</li> <li>- <b>16:9:</b> Compress the image to convert the whole image. Select when a 16:9 TV is connected.</li> <li>- <b>16:10:</b> Select when a 16:10 TV is connected.</li> </ul>
<b>TV SYSTEM</b>	<ul style="list-style-type: none"> <li>- Select to adjust TV Type and video output resolution. This setting depends on your regional location. Include:  <b>NTSC</b> – United States, Canada, Japan, Mexico, the Philippines, South Korea, and Taiwan.  <b>PAL</b> – Europe, Greenland, parts of Africa and South America, the Mideast, China, India, Australia, and Indonesia.</li> </ul>
<b>1080p 24Hz</b>	<ul style="list-style-type: none"> <li>- Choose this option to enable or disable 1080P 24HZ support. A TV set with 1080P 24HZ (24P) mode is needed.</li> </ul>
<b>Deep Color</b>	<ul style="list-style-type: none"> <li>- Help to perform more detailed level of color depth, make continuous color change smoother. You can get more vivid color effects. A TV set with deep color support is needed.</li> </ul>
<b>Screen Size</b>	<ul style="list-style-type: none"> <li>- Adjust the video output size according to the size of TV screen. Press Left/Right button to adjust the width of the screen, and Up/Down button to adjust the height of the screen.</li> <li>- In Casablanca, this option is used to adjust the video image size</li> </ul>

	during video playback. Press Zoom button to fit the screen size you have set.
--	---

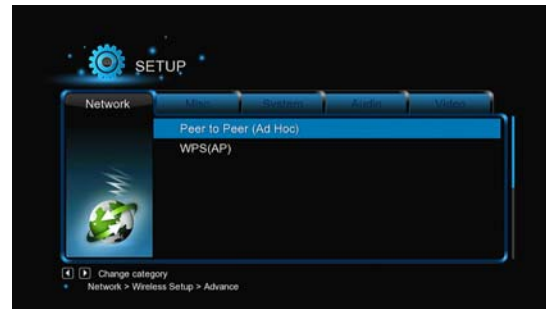
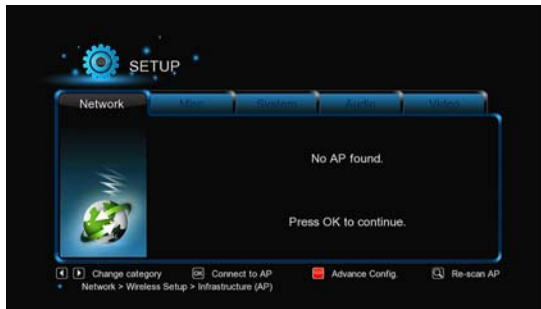
**3.1.4 Change Network Settings**



Option	Description
<b>Wired Lan Setup</b>	<ul style="list-style-type: none"> <li>- <b>DHCP IP (AUTO)</b> Select to obtain IP address automatically.</li> <li>- <b>FIX IP (MANUAL)</b> Select to manually input the IP Address, Subnet Mask, Default Gateway, and DNS Server IP Address.</li> </ul>
<b>Wireless Setup</b>	- There are detail introductions following this form.
<b>PPPoE Setup</b>	- With an ADSL account and password, system can obtain IP address and connect to internet automatically based on PPPOE protocol.
<b>Samba Process</b>	- Please refer to ' <b>3.13 NAS</b> ' for more details.
<b>Transmission</b>	- Please refer to ' <b>3.14 Transmission</b> ' for more details.
<b>FTP</b>	- Configure your desired login User Name and Password.

**Wireless Setup**

There are 3 mode for you to select, **Infrastructure (AP)** and **Peer to Peer (Ad Hoc)** and **WPS (AP)** mode. Follow the prompting message on the screen and press **Red** button to choose **Peer to Peer (Ad Hoc)** or **WPS (AP)** mode.

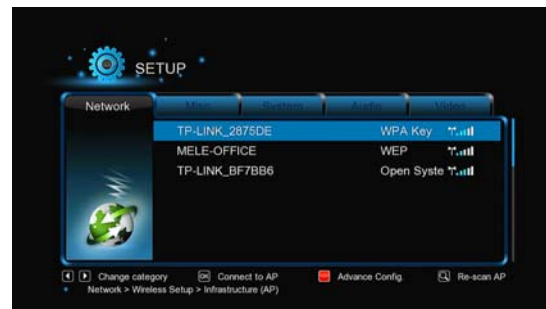
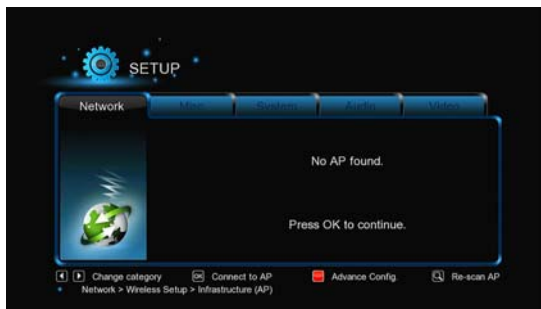


## **Infrastructure (AP)**

Infrastructure mode is used to connect computers with wireless network adapters, also known as wireless clients, to an existing wired network with the help from wireless router or access point. Please follow following steps to configure your wireless network.

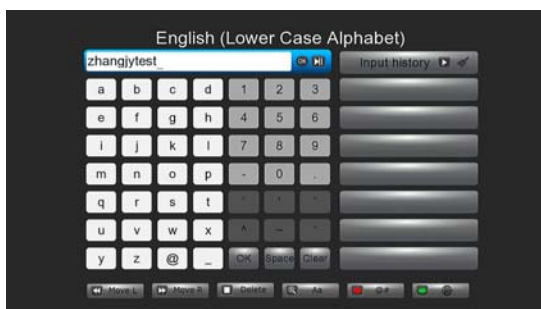
### **Step 1, Scanning AP (Access Point) in your network**

Follow the on-screen information and press the **Zoom** button to select **Infrastructure (AP)** mode and update the access points list, and all SSID will be displayed on the screen.



### **Step 2, Input WEP / WPA key.**

Press **OK** to input encryption keys via the virtual keyboard, **OK** to confirm and to start testing the connection.



The testing process will take for a while, please be patient to wait. If the test is ok, the network information (Profile Name, IP address, Subnet Mask, Gateway, etc.) will be displayed on the screen.

## **Peer to Peer (Ad Hoc)**

Peer to Peer mode, which is also called Ad Hoc mode or computer-to-computer mode, is used to connect wireless clients directly together, without the need for a wireless router or access point.

## **WPS (AP)**

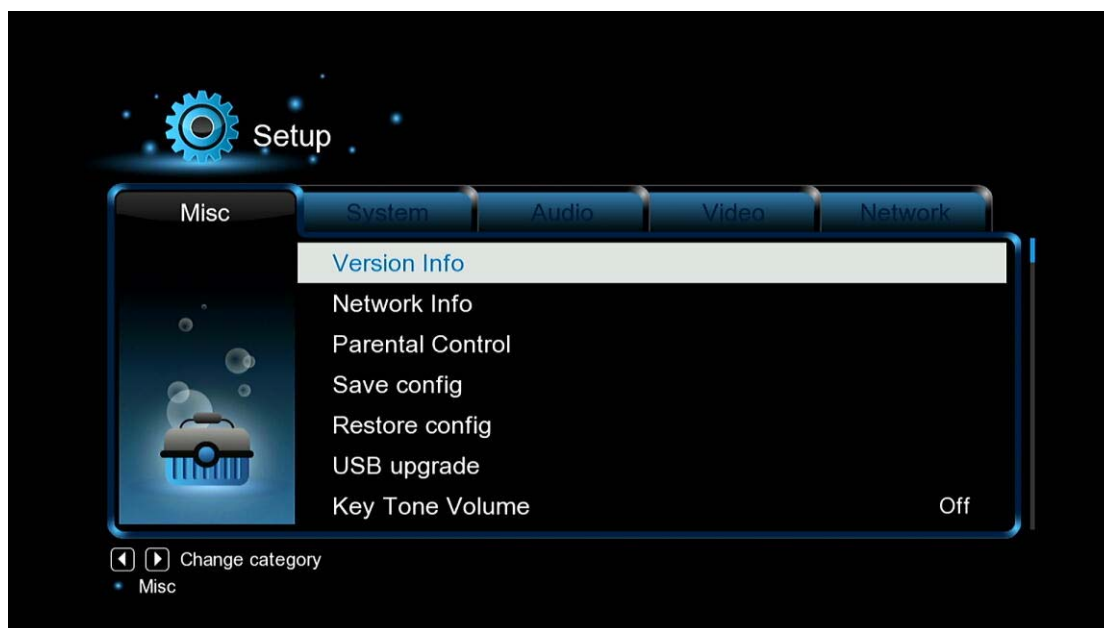
WPS, Wi-Fi Protected Setup, is used to connect a wireless router directly, without

searching SSID and inputting password. In this mode, you just need to configure the parameters of your router which support WPS function. There are two modes for you to select, PBC mode and PIN mode.

**PBC:** Press WPS button or select the button mode on your router → Select the **PBC** mode on this player to start testing, the connection process will take for a while.

**PIN:** Input the pin code in the configuration menu of your router → Select the **PIN** mode on this player to start testing, the connection process will take for a while.

### 3.1.5 Miscellaneous



Option	Description
<b>Version Info</b>	- This tab shows you information about the software installed and about the material components of your player.
<b>Network Info</b>	- This tab shows you information about your network, MAC Address, IP address Gateway, Subnet.
<b>USB Upgrade</b>	- Please refer to ' <b>3.16 Firmware Upgrade</b> ' for more details.
<b>Key Tone Volume</b>	- Here you can adjust the volume of key tone.

## 3.2 Browsing Files and Media Playback

### 3.2.1 Browse via File Manager

The **File Manager** allows you to browse and play music, photo and movie files stored on an internal HDD, external USB device, memory card and network.



In **File Manager**, press **Menu** button, you can choose different review mode, **Thumbnails**, **List** or **Preview**.

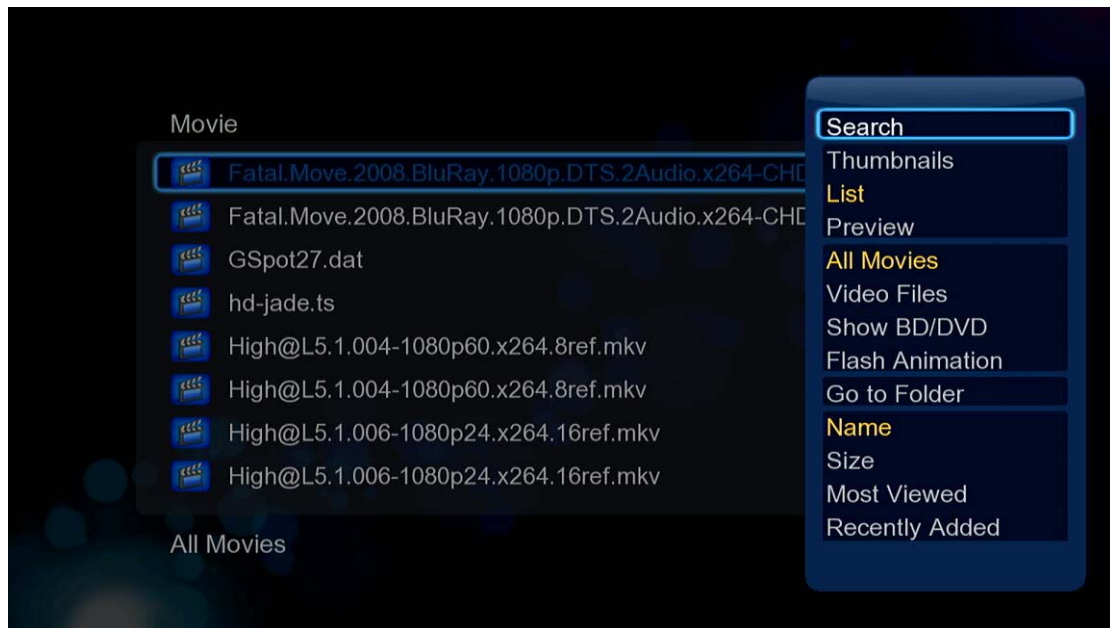
### 3.2.2 Browse via Media Library

Enter into **Movie/Photo/Music** interface, only supported files will be displayed. Please refer to Appendixes in chapter '4.1 Specifications' for more details about the supported files.



In media library, press **MENU** button to display the option menu, you can get following functions through the option menu.





Function	Description
<b>Quick-Search</b>	- Choose the <b>Search</b> option in the option menu, you can search for a media file by filter media library to locate the specific media file.
<b>Review Mode</b>	- Choose a review mode among <b>Thumbnails, List, Preview</b> from option menu.
<b>Sorting Mode</b>	- Choose to sorting files by <b>Name, Size, Most Viewed, Recently played</b> or <b>Recently Added</b> from option menu.
<b>Flash Animation</b>	- Choose to display .swf files in media library.
<b>BD/DVD</b>	- Choose to display DVD IFO, BD MV and ISO files directly in media library.
<b>Go to Folder</b>	- Choose to locate the file in file manager.
<b>Folder Directory</b>	- Different mode to view photos in photo library.
<b>Leaf Folder View</b>	
<b>Date View</b>	

### 3.2.3 Playback Option

Press **Menu** button during playback, you can get following functions through the Option menu.

Function	Description
<b>Title menu</b>	- Useful for DVD IFO and ISO playback. Title menu, return to the main menu of entire disc. Root menu, return to the root main of each title.
<b>Root menu</b>	
<b>Video Setting</b>	- Adjust <b>Brightness, Contrast, Saturation and Hue.</b>
<b>Slide Timing</b>	- With these three options, you can choose the <b>Interval, Transition effect</b> and <b>background music</b> during the photo playback.
<b>Slide Transition</b>	
<b>Select Music</b>	



### 3.3 Favorites Manager

This player is equipped with a powerful function that we call Favorites. Actually it is a list of Shortcuts that you the user easily create yourself. The Favorite Link works as a shortcut to show folder on your Local Hard Drive, hosted USB Drive, Samba network share.



Navigate to the file or folder in file manager, press the Menu button on the remote control. The menu dialogue will open and you will see the option “Add to Favorites”. Select this and the folder will path will be added to the Favorites.



### 3.4 3D Movie Playback

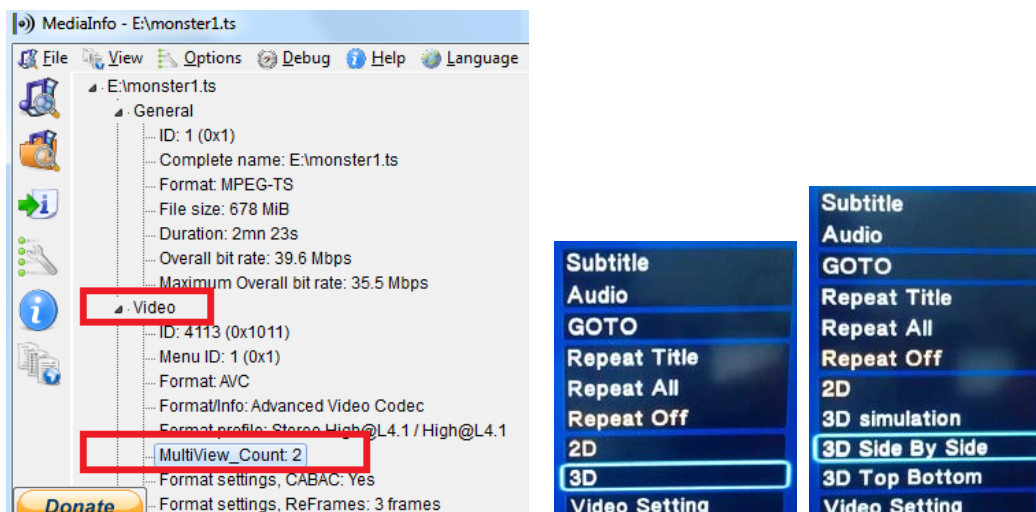
This player can support real 3D movie playback and bring you to the 3D world. Except for this player, a 3D TV, a pair of 3D glasses and a **HDMI 1.4** cable are also needed.

To enjoy a 3D movie,

**Step 1**, Navigate to the file and press **Play** button to start movie playback.

**Step 2**, Press the **Menu** button on the remote control. Different dialogue will be open according to different type of the movie. There are “3D”, “3D simulation”, “3D Side-by-side”, “3D Top bottom” for you to select.

You can use Media info to check whether your file is a real 3D movie. If the value of MultiView\_Count is 2, you will get the option “3D” ,or else you will get “3D simulation”, “3D Side-by-side”, “3D Top bottom” options.



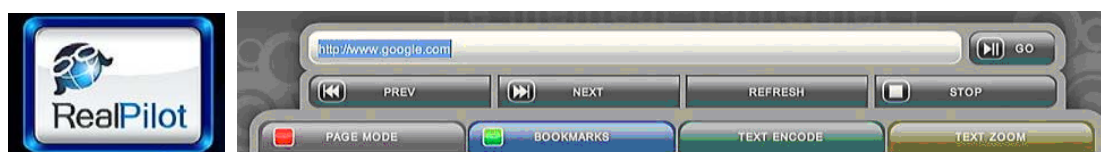
### 3.5 Internet Media

This feature is additional function. All contents and services under this feature are provided by third-party service providers, our company does not offer any contents and services of this feature and it not responsible for any contents and services provided under this feature. Our company is not responsible for any operational stability of the contents and services, for example, if you cannot access certain web site for video streaming or news broadcast, or the content of a web site has been changed etc, are all responsible and control by the third-party service providers. If you find that these features cannot operate properly, please contact our customer service or visit our company website to obtain the relevant information.



### 3.6 Web Browser of Casablanca

This product allows user to surf the internet via a built-in browser. Both remote control and USB keyboard & mouse can be used during webpage browsing. To use the web browser of casablanca, enter into **Internet Media** →select **RealPilot**→ Press **Option** button to display/hide the tool bar during webpage browsing.



The following functions are available from the tool bar.

Option	Function
--------	----------

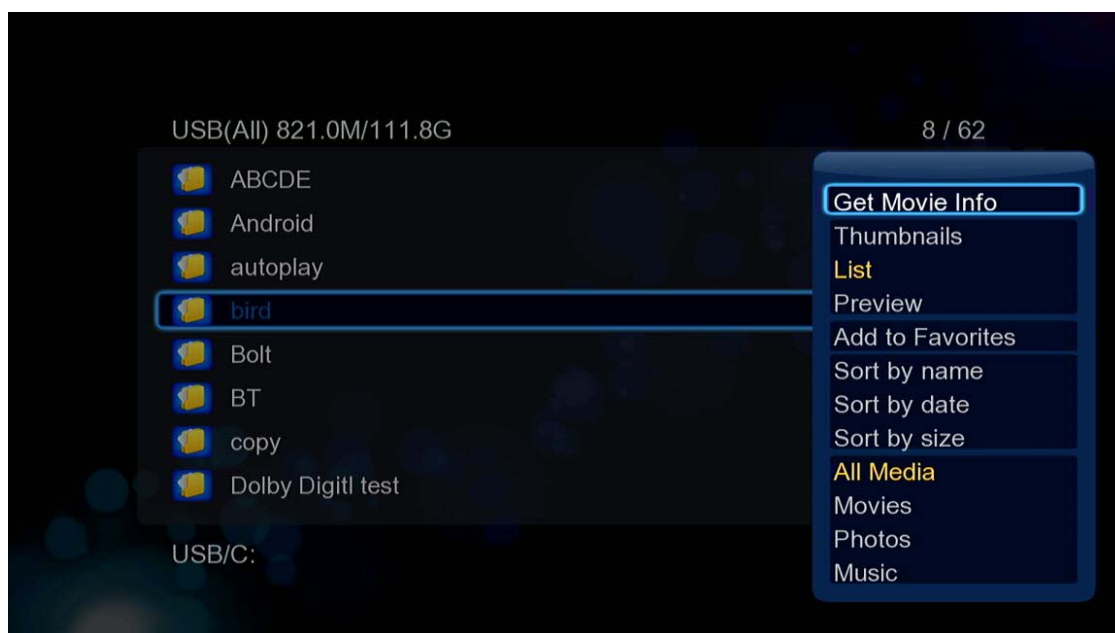
<b>Address bar</b>	Input the address of the website.
<b>Go</b>	Load the webpage.
<b>Previous page</b>	Back to the previous webpage.
<b>Next page</b>	Forward to the next webpage.
<b>Navigation/Page mode</b>	There are navigation mode and page mode when using remote control to browse webpage, you can select one of them by pressing <b>RED</b> button. In navigation mode, remote control is used to move the cursor. While in page mode, remote control is used to page up and down.
<b>Bookmarks</b>	Add the website to your bookmark.
<b>Text encode</b>	Select the text encoding of the webpage.
<b>Text Zoom</b>	Adjust the size of the text in the webpage.

### 3.7 Movie Jukebox

Good help to manage movies with many humanistic functions. Here you can classify your movies into different categories, get the cover art and overview from internet and build the film poster of your movie.

First, download the movie info and add your movies to jukebox.

Enter into file manager → press Menu button → Select the option **Get Movie Info**.



Download the poster, movie reviews from appointed movie database. You can change the movie title, select the movie database by yourself.

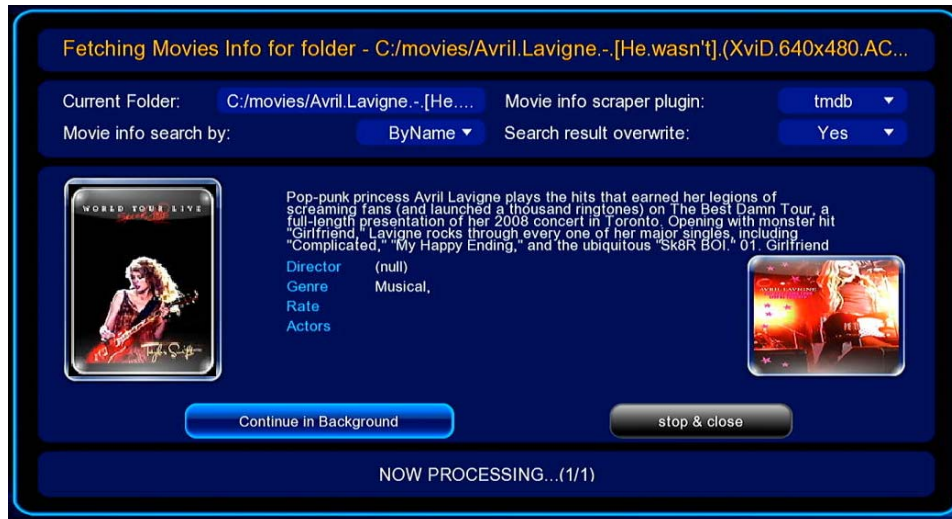


Then, Enter into Premium apps → Select **jukebox**.



From the film poster, you can get movie details by press **info** button. Press **OK** button to start movie playback.

In file manager, you also can search the whole folder, and download movie info in background.



### Best movie name:

Movie name.(year).(language).(resolution, video codec info, and so on).mkv,

For example: Blade Runner.(1982).(FRENCH).(BDrip).mkv

Please refer to <http://code.google.com/p/moviejukebox/wiki/FileNaming> for more details.

### 3.8 DLNA DMR

This player can work as a Digital Media Renderer. It can play content received from a **digital media controller (DMC)**, which will find content from a **digital media server (DMS)**. With it, you can seamless stream multimedia on your large-screen TV.

**Step 1**, Enter into **Setup**→ **System**→ menu, turn on **DLNA DMR**.

**Step 2**, Install a digital media controller on your iphone/iPod/iPas or Android phone. And connect your phone to the same network with the player. There are several DMC applications are available, for instance, **iMediaShare**.

**Step 3**, Run **iMediaShare**→select the media stored on your phone or other Upnp server even media from internet→ select a digital media renderer,and then you can watch the media on your TV. Except the media stored on your phone, you also can select media form internet, like Picasa,Facebook,Youtube.



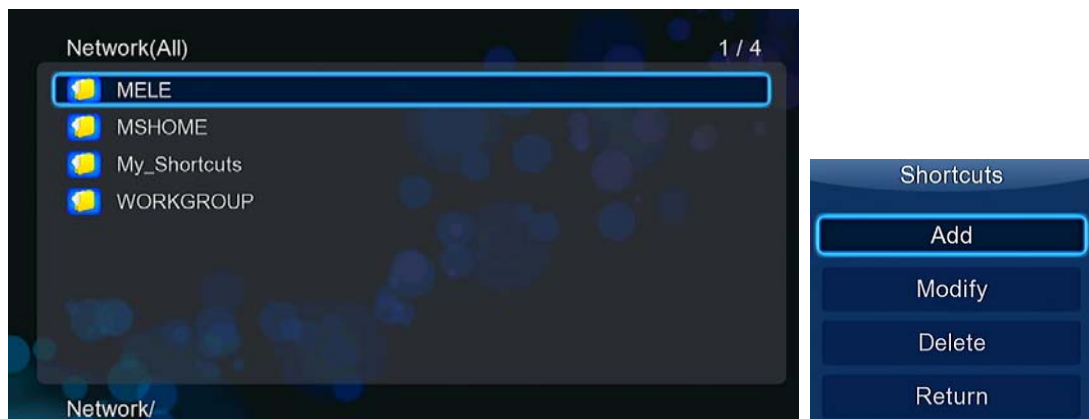


### 3.9 A/V Streaming via Network

To stream your media files shared on the home network,

**Step 1**, Enter into **Setup**→**Network** menu, connect your player to your home network.

**Step 2**, Enter into **File Manager**→**Network**, find your PC the workgroup list. Then you can select and play the shared media files that you want to browse.



Due to different network conditions, sometimes the workgroup might not be accessed or shown in the list. You can set '**Specific File Server IP**' and access it from '**My\_Shortcuts**'.

Press the **Red** button and a popup menu appears. Select **Add** to open a popup menu where you can input **Label**, **Net User ID**, **Net Password**, **Domain**, **Host Name**, and **Specific File Server IP**.

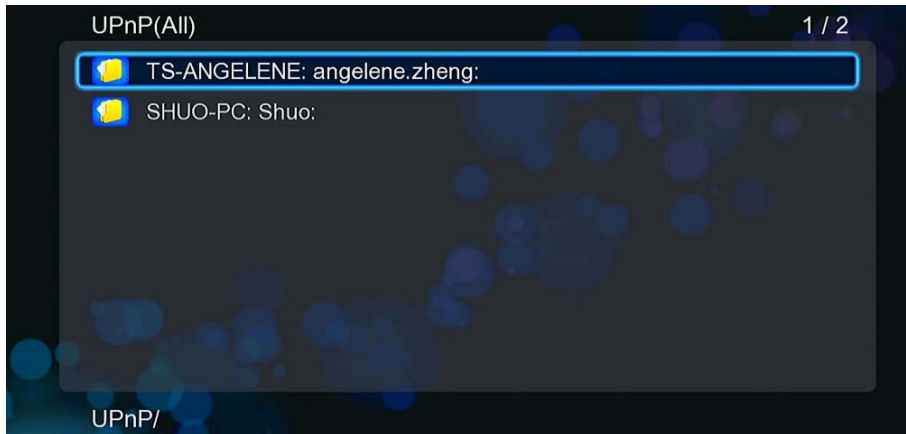
### 3.10 A/V Streaming via UPnP-server

A built-in UPnP (Universal Plug and Play) client has been integrated on the system, which enables the player to auto-detect UPnP Media Servers on the network to browse and stream media files from them. There're a lot of free and commercial UPnP Media Server software, such as Windows Media Connect, Windows Media Player 11, XBMC Media Center (Linux/Mac/Windows), MediaTomb (Linux), etc. Please install one of them on your computer, and share the media files through it.

To stream your media files shared through a UPnP server,

**Step 1**, Enter into **Setup**→**Network** menu, connect your player to the home network.

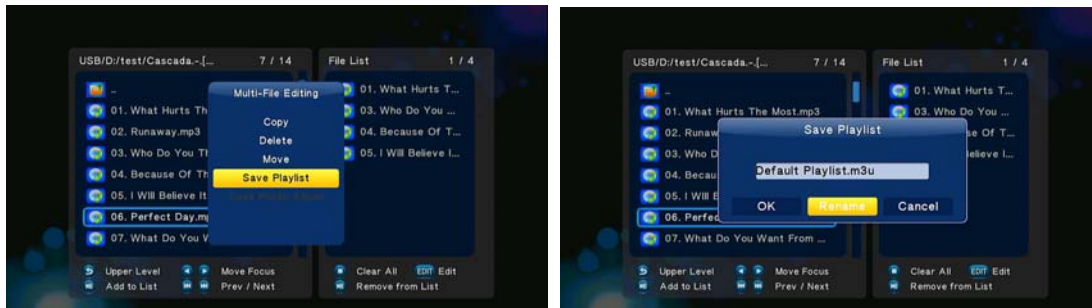
**Step 2**, Visit **Files Manager**→**UPnP** menu on the player, select the UPnP-server, then you can browse the media library shared by UPnP server.



### 3.11 Music playlist & Photo Album management

**Step 1**, Enter into **Music/Photo** interface.

**Step 2**, Press **Copy** button to enter file selecting menu, follow the on-screen information to finish creating music playlist or photo album.



**Step 3**, Enter **Music/Photo** interface, press **Menu** button and choose **Playlists/ Albums** to view your music playlists/ photo albums.

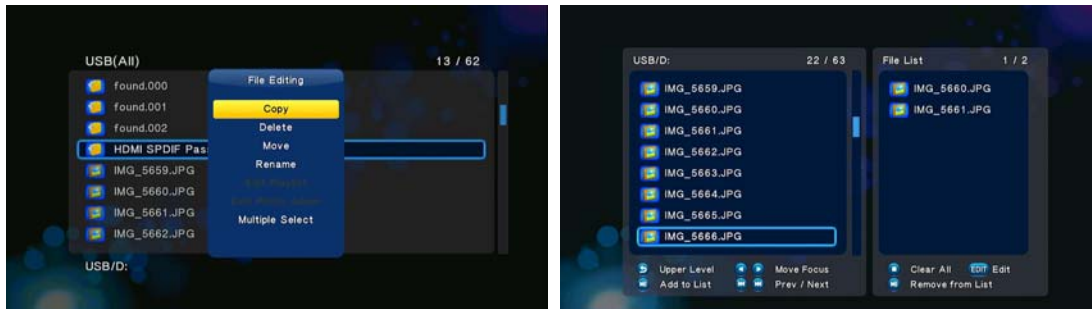


### 3.12 File Copy/Delete/Move/Rename

**Step 1**, Enter into **File Manager**.

**Step 2**, Locate the file or folder which you want to copy/delete/move/rename.

**Step 3**, Press **Edit** button to enter file editing menu, or press **Copy** button to enter file selecting menu, then follow the on-screen information to finish file copy/delete/move/rename.



### 3.13 NAS function

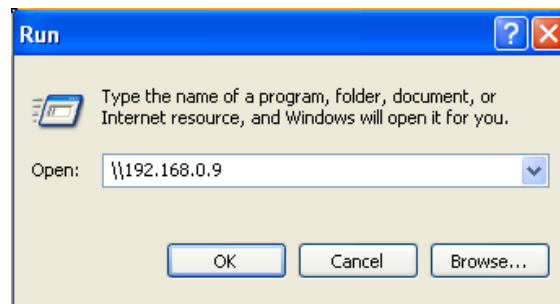
This product functions as a NAS (Network Attached Storage) device when it is attached to the home network. This feature allows users to store and retrieve large amounts of data from their own local network.

**Step 1**, Enter into **Setup**→**Network** menu, connect your player to home network.

**Step 2**, Enter into **Setup**→**Network** menu, turn on **Samba process**.

**Step 3**,

**On Win XP**, key in \\IP Address or \\Host name in the Run window (click Run in the start menu) or in the address bar of a web browser, for example Internet Explorer on your PC (if the IP address of the product is 192.168.0.9, please key in \\192.168.0.9), and click OK or press the Enter button on the keyboard.



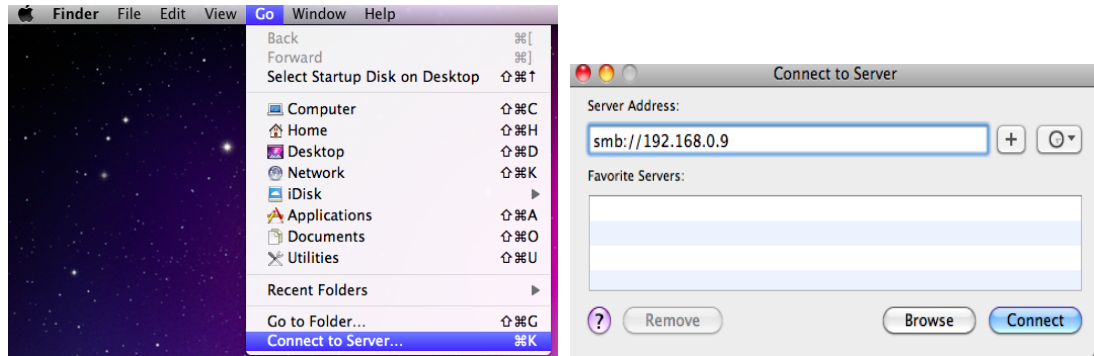
**On Windows Vista or Windows 7**, please key in \\IP Address or \\Host name at the search bar, then press the Enter button on the keyboard.



**On Mac**,

Finder→Go→ Connect to Server, key in smb://IP Address or smb://Host name and click Connect.





You can then manage the files stored on hard disk and USB drive that connected to the player.

### 3.14 Transmission

Transmission is a free, open-source and cross-platform BitTorrent client. To use this function,

**Step 1**, Enter into **Setup**→**Network** menu, connect your player to internet.

**Step 2**, Enter into **Setup**→**Network** menu, turn on transmission.

**Step 2**, Launch a web browser such as Internet Explorer or Firefox, and at the address bar, key in <http://192.168.50.196:9091> where 192.168.50.196 is the IP address of your product.

You need format the external hard disk on the player to use transmission.

### 3.15 FTP Server

This product can also function as a FTP Server when it is attached to your home network via wired or wireless connection.

**Step 1**, Enter into **Setup**→**Network** menu, connect your player to home network.

**Step 2**, Enter into **Setup**→**Network** menu, configure the login User Name and Password.

**Step 3**, Enter into **Setup**→**Network** menu, turn on FTP.

**Step 4**, Open the FTP application and login on your PC. After login is successful, you will be able to upload/download files via FTP Server.

### 3.16 Firmware upgrade

The firmware is the operating system (OS) installed on the device. Firmware upgrades can bring new features, improvements and bug fixes.

#### Method 1:

**Step 1**, Copy 'install.img' to the root directory of a USB stick, and connect it to the USB HOST port of the player.

**Step 2**, Press and hold the **POWER** button on the back panel, and do not loosen.

**Step 3**, Plug the power cable into the DC IN jack, wait for about 5 seconds or more, and then loosen your finger on the **POWER** button; Firmware installation will start.

#### Method 2:

**Step 1**, Copy 'install.img' to the root directory of a USB stick, and connect it to the USB HOST port of the player.

**Step 2**, Enter **Setup** →**Misc** menu, select **USB Upgrade**, firmware installation will start.

## 4 Specifications

---

### **I/O INTERFACES SUPPORTED:**

- Gigabit Network Adapter
  - 3.5" SATA HDD
  - USB 3.0 Device port
  - USB 2.0 HOST port
  - Memory Card slot (supports SD/MMC)
  - Composite (CVBS) A/V jack
  - Component Y/Pb/Pr jack
  - HDMI V1.4 interface
  - S/PDIF Optical & Coaxial jack
  - DC-IN 12V 2A
- 

### **NETWORK FEATURE**

- 10/100/1000Mbps Auto-Negotiation Ethernet
  - 802.11b/g/n WLAN, up to 300Mbps (supported by optional WLAN USB Adapter)
- 

### **FILE SYSTEM SUPPORTED:**

- FAT/FAT32/NTFS/HFS+/EXT3
- 

### **CONTENT FORMATS SUPPORTED:**

- AVI/MKV/TS/MPG/MP4/MOV/VOB/ISO/IFO/DAT/WMV/RM/RMVB/BD ISO/BD MV, resolution up to 720p/1080i/1080p
  - MP3/OGG/WMA/WAV/FLAC/APE
  - HD JPEG/BMP/PNG
- 

### **VIDEO CODECS SUPPORTED:**

- MPEG-1
  - HD MPEG-2
  - HD MPEG-4 SP/ASP/AVC (H.264)
  - WMV9 (VC-1)
  - RealNetworks (RM/RMVB) 8/9/10, up to 720p
- 

### **AUDIO CODECS SUPPORTED:**

- MP2/3, OGG Vorbis, WMA Standard (DRM, and Advanced Profile not supported), PCM, LPCM, RA, DTS, Dolby Digital, Dolby Digital Plus, Dolby TrueHD)
- 

### **SUBTITLE FORMATS SUPPORTED:**

- SRT, SMI, SSA, SUB, IDX+SUB
- 

**Note:** The specifications and design of this product are subject to change without notice.

## 5 Copyrights and Trademarks

### Copyrights

**All rights reserved.** No part of this manual may be reproduced, or transmitted in any form or by any means, whether by electronically or mechanically, without the express written permission from the copyright holder.

Copyrighted materials, such as software, music files, or movies, are protected by local law, and may not be illegally copied or used without permission from the copyright owner.

### Trademarks

Microsoft and Windows are registered trademarks of Microsoft Corporation.

All other trademarks are property of their respective holders.



Manufactured under license under U.S. Patent #'s:5,451,942; 5,956,674; 5,974,380; 5,978,762; 6,487,535 & other U.S. and worldwide patents issued & pending. DTS and DTS 2.0 + Digital Out are registered trademarks and the DTS logos and Symbol are trademarks of DTS, Inc. © 1996-2008 DTS, Inc. All Rights Reserved.



Manufactured under license from Dolby Laboratories. Dolby and the double-D symbol are trademarks of Dolby Laboratories.

## 6 Warranty

### What your warranty *does not* cover:

- Acts of nature, such as fire, static discharge.
- Damage from unauthorized repair, alteration or accident.
- Damage from misuse or neglect.
- A unit that has been modified or incorporated into other products or is used for institutional or other commercial purposes.
- Loss of customer's software, firmware, information, or memory data.
- Improper handling or installation.

## 7 GPL Statement

This product contains free software which is licensed under the GNU General Public License. After you purchase this product, you may procure, modify or distribute the source code of the GPL/LGPL software that is used in this product.

To obtain a copy of our open source software, please contact our support center and we will

provide you with a CD-ROM of the source code that is used, charging only the actual expense involved. However, please be noted that we can not provide guarantee with the source code, and there is also no technical support for the source code from us.