

# Smart SFIC Solutions Catalog



ASSA ABLOY, the global leader  
in door opening solutions

**medeco**<sup>®</sup>  
ASSA ABLOY

# Table of Contents

Introduction to SFIC / Medeco SFIC Continuum .....	3
Medeco XT SFIC Locking Platforms .....	4
Medeco XT System Overview .....	5
Medeco X4 SFIC Locking Platforms .....	6
Medeco <sup>B</sup> SFIC Locking Platforms .....	7
Medeco <sup>B</sup> SFIC Keyway Cross Reference Guide .....	8
Professional Services .....	9-10
SFIC Cylinders .....	11-12
SFIC Housings .....	13
SFIC Deadbolts .....	14
SFIC Padlocks .....	15
Euro Profile Interchangeable Core (EPIC) .....	16
Cabinet Locks .....	17
SFIC Keys .....	18
Finishes .....	19



For additional information and to find a local service provider, visit:  
[www.medeco.com/sfic](http://www.medeco.com/sfic)

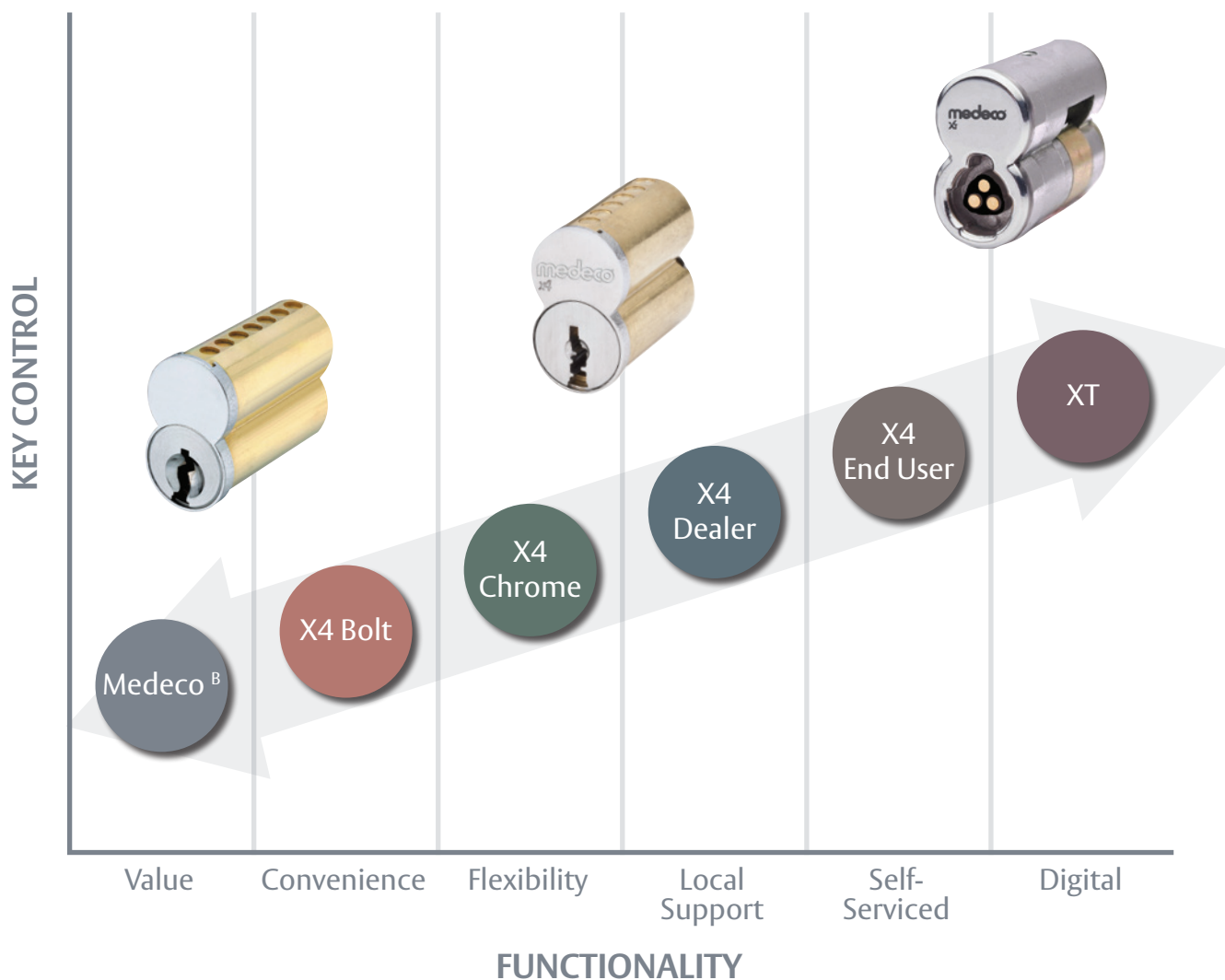
# SFIC Introduction

Once almost exclusively used by large institutions, retail chains, and commercial operations, Small Format Interchangeable Core (SFIC) cylinders continue to be increasingly common in many markets, due to the ease and speed of removing cylinders with the appropriate control key.

This allows locks to be quickly rekeyed without special tools or training, saving time and money while ensuring the security and integrity of the master key system. What sets SFIC cylinders apart from other interchangeable core is its universal format. All SFIC cylinders, regardless of the manufacturer, are designed to the same specifications for size and function. This allows the use of SFIC cores with virtually any SFIC hardware.

Few solutions offer the cost savings and flexibility of SFIC, and no other manufacturer provides as many options as Medeco.

## Medeco SFIC Continuum



# Medeco XT



Medeco XT is a complete electronic locking system providing controlled access, accountability, physical security and effective system management. More than just a way to protect property, equipment and assets, Medeco XT is also a business tool that can lead to a substantial return on investment.

## Unique Capabilities



### Electronic Scheduling

Keys are electronically programmed to open only specific locks during a designated schedule. Schedules may also contain an expiration point to completely disable the key until it is audited and reprogrammed.



### Audit Accountability

Audit information recorded in both the lock and key shows a time-and-date-stamped record of every event, including authorized accesses and unauthorized attempts.



### Data Dashboard

Data Analytics shows system data in a graphical way. It consists of several mini-dashboards that provide insight into your system configuration and audit events.



### Uses Existing Hardware

Medeco XT keys provide all power to the cylinder, eliminating the need for any hard wiring or power supply. Simply remove the existing mechanical cylinder and install the Medeco XT cylinder.



### Physical Security

Medeco XT products add a wide variety of intelligent features without compromising on physical security. Attack-resistant design and tamper-proof features provide strong protection against forced entry.



### Efficient System Management

Medeco XT software contains tools that will help you manage your security more efficiently. Flexible programming, scheduled access and full audit reports are offered with the convenience of stand-alone or web-based software.



### Bluetooth

Bluetooth enabled option with iOS and Android app support.

# Medeco XT System Overview

Medeco XT software contains tools that will help you manage your security more efficiently. Flexible programming, scheduled access and full audit reports are offered with the convenience of web-based software. Medeco XT Web Hosting provides a global solution to programming and scheduling XT Keys and Cylinders.

Administrators have the ability to change schedules and retrieve audit information from their Medeco XT keys without having to physically possess the key. With the downloadable programming client, a key holder can dock and synchronize with the XT Web Server from anywhere in the world with a PC and an internet connection. Our web-hosted programming offers secure web access and year-round 24/7 access, making it a cost-effective electronic solution to meet any customer's needs.

The screenshot displays the Medeco XT Web Manager interface. At the top, there is a navigation menu with options: Dashboard, Scheduling, Audits, Analytics, Users, Keys, Openings, and Cylinders. The main content area is titled 'Visual Audit (Trial)' and 'Daily Overview for Joe Prescott' for the date 03/07/2016. A 'Back to User Report' button is visible.

The 'ACTIVITY TIMELINE' section shows a vertical timeline of events:

- 12:46 am: Front Entrance Opened
- 1:49 am: Tool Cabinet Not Scheduled
- 3:01 am: Tool Cabinet Opened
- 4:04 am: Stocking Disabled
- 5:10 am: Front Entrance Opened
- 6:03 am: Side Entrance W Opened
- 6:35 am: Marketing Dep. Opened
- 7:58 am: Supply Cabinet Opened
- 8:07 am: Side Entrance E

The 'ACTIVITY BY OPENING' bar chart shows the frequency of events for various openings:

Opening	Count
Stocking	5
Front Entrance	5
Side Entrance E	3
Side Entrance W	3
Tool Cabinet	3
Rear Entrance	2
Marketing Dep.	2
Supply Cabinet	2
Side Dep.	1

The 'SUMMARY OF EVENTS' pie chart shows the distribution of event types:

Event Type	Count
Opened	21
Not Scheduled	2
Outside Access Times	2
On Blacklist	2
Disabled	2
Expired	2
Schedule Pending	0
Wrong System	0
Changed Core	0
Blacklist Cleared	0
Blacklist Loaded	0
Audit Full	0
Communication Interrupted	0
Other	0

At the bottom right, there is a copyright notice: 'Medeco® Security Locks Copyright © 2012 All Rights Reserved.'

# Medeco X4



Medeco X4 is the perfect security upgrade for Small Format Interchangeable Core facilities. All facilities need patented key control to effectively secure exterior and interior openings. This strength of integrity allows security managers to have peace of mind when it comes to managing their system.

Medeco X4 is the most economic and efficient solution. Patent protected until 2027 and with one of the largest master keying capabilities on the market, Medeco X4 allows facility managers to tie everything together under one key for ease, convenience and efficiency. Additionally, Medeco X4 easily retrofits into existing door hardware, so installation time is minimal.

## Unique Capabilities



### Protected by Federal Utility Patent to 2027

Patent protection prevents unauthorized duplication of keys and allows Medeco to eliminate manufacture and supply of imitators.



### Competitively Priced

Unlike many competitors, the price of a Medeco X4 pinned core includes the cost of 2 cut keys and there is no additional charge for master keying.



### Uses Existing Hardware

Retrofit cylinders available in many different formats, including SFIC, eliminating the need to replace expensive door hardware.



### Large System Capability

Key systems can be extended to four times that of other SFIC products.



### Complete Facility Solution

Cores can be integrated into a single key system where traditional and small format cylinder types can be operated by the same keys.

# Medeco<sup>B</sup>



Medeco<sup>B</sup> offers unlimited flexibility and keying options. Available in standard 6 and 7 pin formats in industry standard keyways, Medeco<sup>B</sup> can be installed in both new and existing key systems.

## Key Control

Unrestricted/Off-Patent

Customers do not need a contract to purchase Medeco<sup>B</sup> SFIC Cores. Cores are available through Medeco and authorized distributors.

## Unique Capabilities



### Value Priced

Medeco<sup>B</sup> is priced to save clients money vs. other unpatented competitors and can be substituted directly into existing master key systems.



### Solid Brass Construction

Quality metals provide for unbeatable durability.



### Reinforced

Manufactured with a reinforced sleeve design.

# Medeco<sup>B</sup> Small Format Interchangeable Core

SFIC Keyway Cross Reference Guide							
KEYWAY	MEDECO <sup>B</sup>	STANLEY	FALCON	KSP	GMS	MSB	OAK
1C	✓	✓	✗	✓	✓	✗	✗
1D	✓	✓	✗	✓	✓	✗	✗
AB	✓	✓	✓	✓	✓	✓	✓
BB	✓	✓	✓	✓	✓	✗	✗
CB	✓	✓	✓	✓	✓	✓	✗
DB	✓	✓	✓	✓	✓	✗	✗
EB	✓	✓	✓	✓	✓	✓	✓
FB	✓	✓	✓	✓	✓	✗	✗
GB	✓	✓	✓	✓	✓	✓	✓
HB	✓	✓	✓	✓	✓	✗	✗
JB	✓	✓	✓	✓	✓	✓	✓
KB	✓	✓	✓	✓	✓	✗	✗
LB	✓	✓	✓	✓	✓	✓	✓
MB	✓	✓	✓	✓	✓	✗	✗
QB	✓	✓	✓	✓	✓	✓	✓
RB	✓	✓	✓	✓	✓	✗	✗
TA	✓	✓	✓	✗	✗	✗	✗
TB	✓	✓	✓	✓	✓	✗	✗
TC	✓	✓	✗	✗	✓	✓	✗
TD	✓	✓	✓	✓	✓	✗	✗
TE	✓	✓	✓	✗	✓	✓	✗
WA	✓	✓	✓	✗	✓	✓	✓
WB	✓	✓	✗	✗	✓	✓	✓
WC	✓	✓	✗	✗	✓	✓	✓
WG	✓	✓	✗	✗	✓	✓	✓
WH	✓	✓	✗	✗	✓	✓	✓
WY	✓	✓	✗	✗	✗	✗	✓



# Medeco® Professional Services

High-quality products alone do not guarantee a successful product experience; value-added services are often needed to ensure that complex systems are designed to work effectively both now and in the future. In order to protect your investment and provide you with the best possible support, Medeco recommends the use of professional design and implementation services to ensure you derive the greatest value on your product investment.

Medeco can provide the technical expertise and skilled resources to help you scope, plan and support your next project. By identifying technical complexities and risks up front, we can ensure the system has been designed to grow with your needs, and identify any issues that might interfere with a trouble-free installation.

We will also provide technical training for your team so that you will properly operate, customize and support Medeco Intelligent Key solutions and mechanical security. And, when there is an issue, we can provide fast, professional and cost effective assistance via phone, email or online.

## Professional Services – Medeco XT Key Systems

### System Planning

Remote Planning Support	SW-501Remote	\$225/hr 1 hour minimum
<ul style="list-style-type: none"> <li>• <b>System Design Assistance</b></li> <li>• <b>Hardware Requirements</b></li> </ul>	<ul style="list-style-type: none"> <li>– Ensure that your system is designed with your current and future interests in mind.</li> <li>– Determine the required hardware to meet your implementation goals.</li> </ul>	
Onsite Planning Support	SW-501Site	\$1,800/day plus T&E
<ul style="list-style-type: none"> <li>• <b>Pre-Deployment Meetings</b></li> <li>• <b>Bench-Top Deployment and Validation</b></li> </ul>	<ul style="list-style-type: none"> <li>– Live in person coordination of events and timeline planning.</li> <li>– Full functionality testing of hardware in a test environment to ensure complete satisfaction before deployment.</li> </ul>	

### System Deployment

Remote Deployment Services	SW-502Remote	\$225/hr 1 hour minimum
<ul style="list-style-type: none"> <li>• <b>Remote Software Installation</b></li> <li>• <b>Remote Software Upgrades</b></li> </ul>	<ul style="list-style-type: none"> <li>– Live online assistance with software installation to ensure complete functionality.</li> <li>– Using our remote access software we will ensure that your software upgrades go without issue, including data conversions.</li> </ul>	
Onsite Deployment Services	SW-502Site	\$1,800/day plus T&E
<ul style="list-style-type: none"> <li>• <b>Equipment Configuration</b></li> <li>• <b>Software Installation / Upgrades</b></li> </ul>	<ul style="list-style-type: none"> <li>– The assistance you need to get all of your equipment programmed and installed in a timely manner.</li> <li>– No need to worry about software installation, we will be there to perform this task for you.</li> </ul>	

All prices are U.S. NET, and not subject to dealer discounting. T&E charges will be quoted upon request.

## Professional Services – Medeco XT Key Systems

### Enterprise System Support (Includes standard support hours of 8am - 5pm, M - F)

<b>Enterprise System Support – Silver</b>	<b>SW-504Silver</b>	<b>\$2,500 Annually</b>
• <b>Enterprise System Support – Silver</b>	– Software System Support; Extended phone support; 6am – 8am and 5pm – 7pm Eastern, Monday – Friday; 2 hour response time to email requests; Real time phone support; Up to 35 tickets annual	
<b>Enterprise System Support – Gold</b>	<b>SW-504Gold</b>	<b>\$3,500 Annually</b>
• <b>Enterprise System Support – Gold</b>	– Software System Support; Extended phone support; 6am – 8am and 5pm – 10pm Eastern, 7 Days per week; 1 hour response time to email requests; Real time phone support; Up to 50 tickets annual	

### Training and Sustaining

<b>Remote Training</b>	<b>SW-503Remote</b>	<b>\$225/hr 1 hour minimum</b>
• <b>Web Based Training</b>	– Online training setup to meet your planning schedule.	
• <b>Additional Training Based on New Staff/Turnover</b>	– Online training to help you keep up with new staff requirements.	
<b>Onsite Training</b>	<b>SW-503Site</b>	<b>\$1,800/day plus T&amp;E</b>
• <b>Hands-on Training</b>	– In depth face to face training for our hardware and software applications.	
• <b>Detailed Product Installation Classes</b>	– On site classes to train your employees on site specific hardware installation.	

All prices are U.S. NET, and not subject to dealer discounting. T&E charges will be quoted upon request.

## Professional Services – Mechanical Key Systems

<b>Training Certification Classes</b>	<b>SW-505Site</b>	<b>\$1,800/day plus T&amp;E</b>
<b>Personalized on-site factory technical certification class(es).</b>		
Medeco will conduct field training, demonstrate sample equipment, and certify students on service, maintenance, and support. These are the same certification classes given at factory and trade shows. Various classes available including Medeco <sup>3</sup> , Medeco x4, Medeco XT, CLIQ and Medeco Master Keying — see training catalog for further details.		

<b>Master Key Consultation</b>	<b>SW-506Site</b>	<b>\$1,800/day plus T&amp;E</b>
<b>Master key system design consultation with a Medeco key system design expert.</b>		
In person key system design consultation with a system design expert. We will assist you in the development of a master key system to meet your design specifications. The system will be uniquely tailored to your facility, resulting in custom Key System Schematics, bitting lists and pinning charts.		

<b>Key Management Consultation</b>	<b>SW-507Site</b>	<b>\$1,800/day plus T&amp;E</b>
<b>Assistance in the design, implementation, customization, and best practices for sound key control.</b>		
Assistance in the design, implementation, customization, and best practices for sound key control products and key management policies and procedures that will minimize liabilities and extend key system lifespan. A key system investment will be maximized by deploying these sound key management practices.		

<b>Installation Inspection</b>	<b>SW-508Site</b>	<b>\$1,800/day plus T&amp;E</b>
<b>Project product installation and operation inspection and certification.</b>		

# SFIC Cylinders



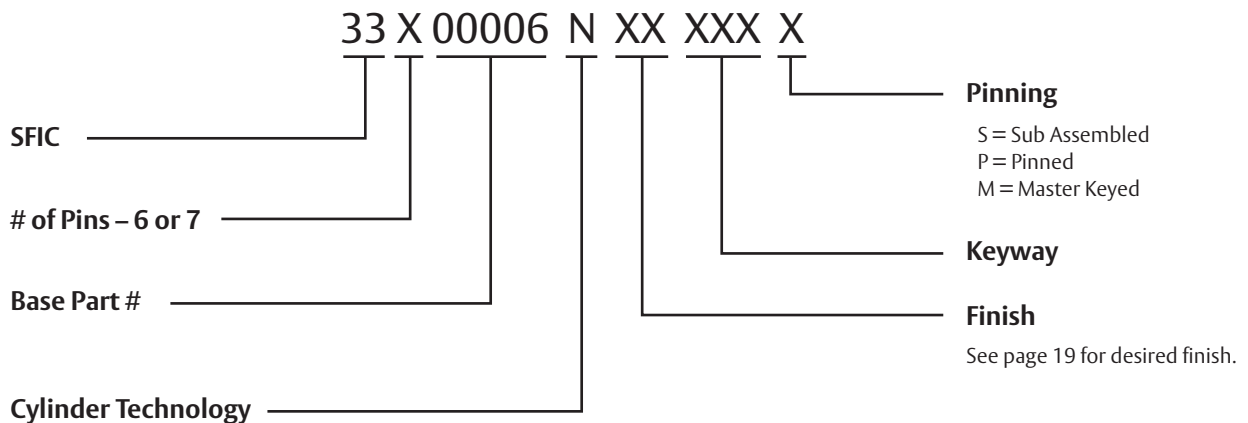
Medeco XT			LEVEL 3 – Intelligent Keys
Cores Only	Part Number	List	Notes
Medeco XT Intelligent Key Digital Small Format Interchangeable Core	EA-100108	\$277.00	All master keying is digital and managed by the software



Medeco X4			LEVEL 1 – Patented Key Control
Cores Only	Part Number	List	Notes
6 Pin Small Format Interchangeable Core with Clip Retainer, Removable Front Plate	33600006 (P)	\$67.80	Pinned pricing includes master key system design and pinning, as well as two cut keys.  Note: Conventional cylinders are available (KIK, Rim, Mortise, etc.) and can be easily integrated into an SFIC Master Key System
	33600006 (S)	\$56.80	
7 Pin Small Format Interchangeable Core with Clip Retainer, Removable Front Plate	33700006 (P)	\$67.80	
	33700006 (S)	\$56.80	

(P) = Pinned (S) = Sub-Assembled

## How to Order:



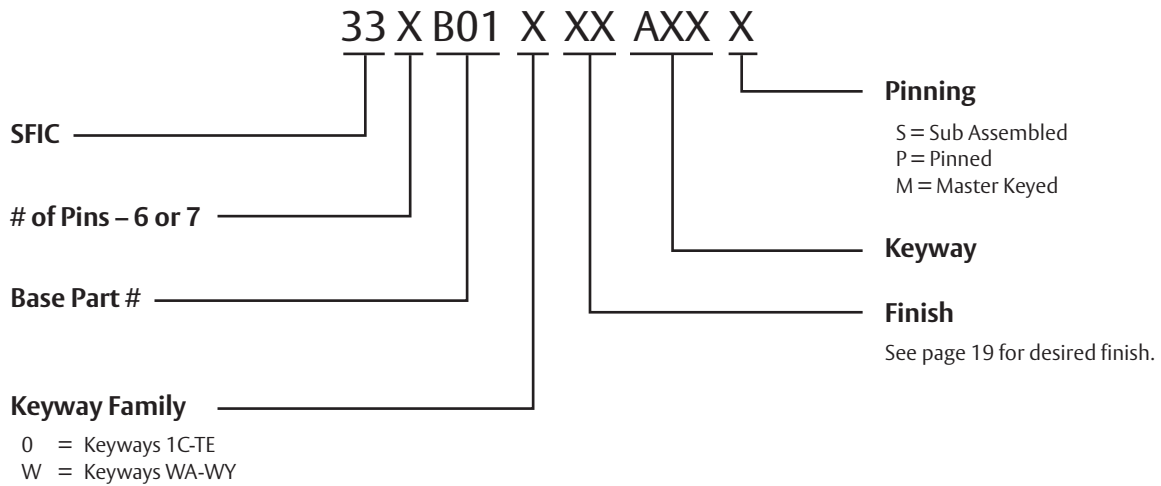
# SFIC Cylinders



Medeco <sup>B</sup>		LEVEL 0 – Convenience	
Cores Only	Part Number	List	Notes
6 Pin Small Format Interchangeable Core with Clip Retainer	33-6B01X(P)	\$31.50	Pinned pricing includes master key system design and pinning, as well as two cut keys
	33-6B01X(S)	\$14.00	
7 Pin Small Format Interchangeable Core with Clip Retainer	33-7B01X(P)	\$31.50	
	33-7B01X(S)	\$14.00	







(P) = Pinned (S) = Sub-Assembled




## How to Order:



# SFIC Housings



Medeco SFIC Mortise Housings			
Description	Part Number	List	
 6 Pin 1 1/4" Mortise Housing Only*	33076011	\$18.15	
 6 or 7 Pin 1 3/8" Mortise Housing Only*	33076021	\$18.15	
 7 Pin 1 1/2" SFIC Mortise Housing Only* If using 6 Pin core spacer CP-160420 required	33076025	\$36.50	
 7 Pin 1 3/8" Housing Only for Corbin® Russwin® Master Ring Cylinders*	33076028	\$54.00	
 6 Pin 7/8" Tapered Head Mortise Housing Only*	33076051	\$18.15	
 6 or 7 Pin 1" Tapered Head Mortise Housing Only*	33076061	\$18.15	

Medeco SFIC Rim Housings			
Description	Part Number	List	
 6 Pin 1 1/2" Rim Cylinder Housing Only	3307603H	\$18.15	
 7 Pin 1 1/2" Rim Cylinder Housing Only	3307604H	\$18.15	
 7 Pin Corbin® Jumbo Rim Housing Only	33076048	\$54.00	

\* All Medeco SFIC Mortise Housings have a screw-on interchangeable cam.", simplifying inventory by allowing you to quickly adapt any housing to fit any hardware.

See Medeco's full line catalog for a complete listing of cams offered.

# Maxum SFIC Deadbolts



## Maxum SFIC Deadbolts

Certification	ANSI A156.36, Grade 1 UL437 Listed cylinder for high security
Door Thickness	Fits 1-3/8" to 2-1/2" Thick
Strike	2-3/4" x 1-1/8", round corners
Warranty	2 Years

Product	Function	Faceplate	Backset	Cylinder	Part Number	List Price
<b>Grade 1 Deadbolt</b>	Single	1-1/8"	2-3/8"	Less Core	11C701	\$172.75
	Single	1-1/8"	2-3/4"	Less Core	11C702	\$172.75
	Single	1"	2-3/8"	Less Core	11C703	\$172.75
	Single	1"	2-3/4"	Less Core	11C704	\$172.75
	Single	Drive-In	2-3/8"	Less Core	11C705	\$172.75
	Single	Drive-In	2-3/4"	Less Core	11C706	\$172.75
	Single	1-1/8"	2-3/8"	Less Core	11C711	\$174.00
	Single	1-1/8"	2-3/4"	Less Core	11C712	\$174.00
	Single	1"	2-3/8"	Less Core	11C713	\$174.00
	Single	1"	2-3/4"	Less Core	11C714	\$174.00
	Single	Drive-In	2-3/8"	Less Core	11C715	\$174.00
	Single	Drive-In	2-3/4"	Less Core	11C716	\$174.00
	Double	1-1/8"	2-3/8"	Less Core	11C721	\$204.00
	Double	1-1/8"	2-3/4"	Less Core	11C722	\$204.00
	Double	1"	2-3/8"	Less Core	11C723	\$204.00
	Double	1"	2-3/4"	Less Core	11C724	\$204.00
	Double	Drive-In	2-3/8"	Less Core	11C725	\$204.00
	Double	Drive-In	2-3/4"	Less Core	11C726	\$204.00

# System Series SFIC Padlocks



## Indoor/Outdoor Padlock, 5/16" Shackle - less SFIC

Description	Part Number	List
Key Retaining, 1 1/8" Shackle Clearance, Less Cylinder	54315K0	\$46.20
Non-Key Retaining, 1 1/8" Shackle Clearance, Less Cylinder	54315L0	\$46.20
Key Retaining, 2 3/8" Shackle Clearance, Less Cylinder	5431FK0	\$51.20
Non-Key Retaining, 2 3/8" Shackle Clearance, Less Cylinder	5431FL0	\$51.20

## Indoor/Outdoor Padlock, 7/16" Shackle - less SFIC

Description	Part Number	List
Key Retaining, 1 3/8" Shackle Clearance, Less Cylinder	54415K0	\$72.20
Non-Key Retaining, 1 3/8" Shackle Clearance, Less Cylinder	54415L0	\$72.20
Key Retaining, 1 7/8" Shackle Clearance, Less Cylinder	5441FK0	\$76.20
Non-Key Retaining, 1 7/8" Shackle Clearance, Less Cylinder	5441FL0	\$76.20

## Shrouded Padlock, 5/16" Shackle - less SFIC

Description	Part Number	List
Key Retaining, 3/4" Shackle Clearance, Less Cylinder	54325K0	\$67.20
Non-Key Retaining, 3/4" Shackle Clearance, Less Cylinder	54325L0	\$67.20

## Shrouded Padlock, 7/16" Shackle - less SFIC

Description	Part Number	List
Key Retaining, 3/4" Shackle Clearance, Less Cylinder	54425K0	\$98.20
Non-Key Retaining, 3/4" Shackle Clearance, Less Cylinder	54425L0	\$98.20

# EPIC–Euro Profile Interchangeable Core



## EPIC–Euro Profile Interchangeable Core

### 6 Pin Part Numbers

Description	Part Number	List
EPIC Euro Double 37.9 mm/37.9mm	2326D21	\$94.10
EPIC Euro Half 37.9mm	2326H01	\$61.40
EPIC Euro with Thumbturn 40mm int/39.2 mm ext	2326S12X*	\$88.90
Small Format Interchangeable Core (SFIC)	3360000R (P)	\$67.80
Small Format Interchangeable Core (SFIC)	3360000R (S)	\$56.80

### 7 Pin Part Numbers

Description	Part Number	List
EPIC Euro Double 41.73mm/41.73mm	2324D21	\$94.10
EPIC Euro Double 41.73mm/55mm	2324D25	\$94.10
EPIC Euro Half 41.73mm	2324H01	\$61.40
EPIC Euro Half 55mm	2324H05	\$61.40
EPIC with Thumbturn 40mm int/43mm ext	2324S12X	\$88.90
EPIC with Thumbturn 40mm int/55mm ext	2324S15X	\$88.90
EPIC with Thumbturn 55mm int/43mm ext	2324S52X	\$88.90

\* X denotes thumb turn.



# SFIC Cabinet Locks



## SFIC Cabinet Locks

Description	Part Number	List
Cabinet lock with deadbolt for SFIC cylinder. Works with Medeco X4, Medeco XT SFIC, or Best style SFIC. SFIC ordered separately.	3307311	\$59.90
Cabinet lock with spring latch for SFIC cylinder. Works with Medeco X4, Medeco XT SFIC, or Best style SFIC. SFIC ordered separately.	3307321	\$59.90
File Cabinet Lock for SFIC cylinder. Works with Medeco X4, Medeco XT SFIC or Best style SFIC Cylinders . SFIC ordered separately.	3307350	\$59.90
Door/Drawer Lock for SFIC cylinder. Works with Medeco X4, Medeco XT SFIC, or best style SFIC. SFIC ordered separately.	3307331	\$59.00
SFIC Mailbox Lock	3307360	\$48.70
SFIC Ratchet Lock	3307340	\$74.60

# SFIC Keys



## Keyblanks for Door Hardware – Medeco<sup>B</sup>

For Keyways: 1C, 1D, AB, BB, CB, DB, EB, FB, GB, HB, JB, KB, LB, MB, QB, RB, TA, TB, TC, TD, TE	Part Number	List
Key Blank	KYBA50000A XX 00	\$1.54
Cut Key	KYCA50000A XX 00	\$10.34
Control Key	KYC A50000A XX 03	\$10.34

XX = Keyway

For Keyways: WA, WB, WC, WG, WH, WY	Part Number	List
Key Blank	KYBA60000A XX 00	\$3.07
Cut Key	KYCA60000A XX 00	\$11.87
Control Key	KYCA60000A XX 01	\$11.87

XX = Keyway

## Keyblanks for Door Hardware – Medeco X4

Description	Part Number	List
6 or 7 Pin Keyblank for Medeco X4 (Small Bow, Custom Coined)	KYB 32X900 XX 99	\$7.20
6 or 7 Pin Keyblank for Medeco X4 (Large Bow, Custom Coined)	KYB 38X900 XX 99	\$7.20

X = 6 or 7 Pin XX = Keyway

## Medeco XT Keys

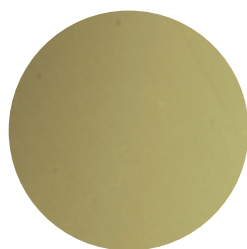
Description	Part Number	List
Medeco XT Industrial Key (G2)	EA-100107	\$135.00
Medeco XT Slim Line Key Basic (G2)	EA-100156	\$103.00
Medeco XT Slim Line Key Plus (G3S)	EA-100178	\$124.00
Medeco XT Slim Line Key Bluetooth (G3B)	EA-100177	\$156.00

All Medeco XT Keys can be programmed to function as Operator, Audit, Control and Program Keys.

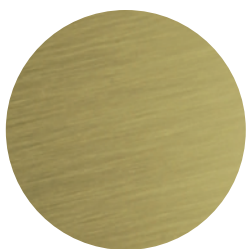
## Medeco XT Key Bundle

Description	Part Number	List
Medeco XT Industrial Key (G2) & Charger Bundle. Includes Medeco XT Industrial Key, Portable Charger & USB Cable.	94-0239	\$156.00
Medeco XT Slim Line Key Basic (G2) & Charger Bundle. Includes XT Slim Line Key, Charger & USB Cable.	94-0271	\$133.00
Medeco XT Slim Line Key Plus (G3S) & Charger Bundle. Includes XT Slim Line Key, Charger & USB Cable.	94-0307	\$145.00
Medeco XT Slim Line Key Bluetooth (G3B) & Charger Bundle. Includes XT Slim Line Key, Charger & USB Cable.	94-0306	\$177.00

# Finishes Available



**05**  
**(US03)**  
**Bright Brass**



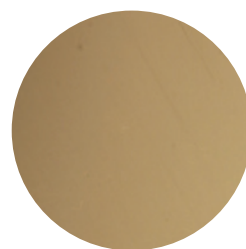
**06**  
**(US04)**  
**Satin Brass**



**09**  
**(US5)**  
**Antique Brass**



**10**  
**Satin Brass**  
**Blackened**



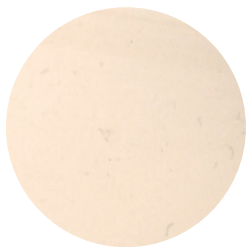
**11**  
**(US9)**  
**Bright Bronze**



**12**  
**(US10)**  
**Satin Bronze**



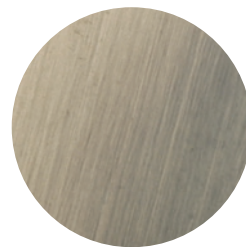
**13**  
**(US10B)**  
**Dark Bronze/  
Oil Rubbed**



**18**  
**(US14)**  
**Bright Nickel**



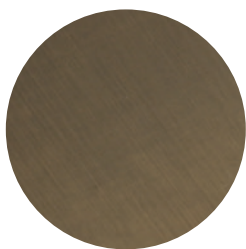
**19**  
**(US15)**  
**Satin Nickel**



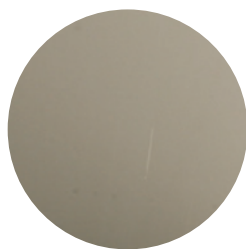
**20**  
**(US15A)**  
**Antique Nickel**



**22**  
**(US19)**  
**Flat Black**



**24**  
**(US20A)**  
**Dark Bronze/  
Clear Coat**



**25**  
**(US26)**  
**Bright Chrome**



**26**  
**(US26D)**  
**Satin Chrome**

*Note: Product appearance may differ from this chart as a result of the differences in plated versus printed materials.*



MEDECO U.S.: 3625 Alleghany Drive | P.O. Box 3075 | Salem, Virginia 24153-0330  
Customer Service: 1-877-633-3261

MEDECO CANADA: 160 Four Valley Drive | Vaughan, ON L4K 4T9 CANADA  
Customer Service: 1-888-633-3264

ASSA ABLOY, the global leader in door opening solutions, dedicated to satisfying end-user needs for security, safety, and convenience.



[facebook.com/medecolocks](https://facebook.com/medecolocks)



[twitter.com/medecolocks](https://twitter.com/medecolocks)



[youtube.com/medecolocks](https://youtube.com/medecolocks)



[instagram.com/medecolocks](https://instagram.com/medecolocks)



newsletter sign-up: [medeco.com](https://medeco.com)