



Quick Reference: Portable Receiver (MV-ALS-PRFM)

Unit Controls

The Media Vision portable receiver offers a selection of 57 channels and an OLED display which indicates battery life, signal strength, volume and a channel selection. The unit is lightweight and can accomodate multiple headset options for a comfortable listening experience for the user. Needed (not included): earphone, headphone or neckloop, optional rechargeable or alkaline AA batteries.





Quick Reference: Portable Receiver (MV-ALS-PRFM)



Turn-On

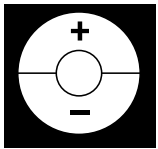
1. Press and hold power button for 1 second till logo "Media Vision" shows up.
2. Logo "Media Vision" shows up for 2 seconds, and then OLED becomes dim.
3. The screen shows default (CH E)/previously used channel or custom label, symbols of battery , lock , and signal strength .



Turn-Off



1. Press and hold power button for 2 seconds and logo "Media Vision" shows up for 2 seconds.
2. Then, "OFF" shows up for 1 second.
3. The player turns off.



Channel Change

1. Press + or – to change the channel when the device is in unlock mode.
2. In unlock mode, channel will flash and be ready for change.
3. Two band types, wideband only (17 channels) or both wide and narrowband (57 channels), are available for the player. Default type is "wideband" channel A~T).
 - Wideband: A~T
 - Wideband and narrow band: A~T & 1~40
4. To scroll channels rapidly, keep pressing + or – to change the channel.
5. Once selected channel is confirmed, press SET button (o) to confirm the channel. If not, the OLED will show previously used channel after being idle for 10 seconds.

Channel Lock



1. The player will automatically be locked immediately when it's turned on.
2. When the channel is changed and SET button is press to confirm the change (or idled for 10 seconds without pressing any button), the player will automatically enter lock mode and symbol shows up.
3. To release the player from lock mode, press both + and – at the same time for 1 second until symbol disappears.



Quick Reference: Portable Receiver (MV-ALS-PRFM)

LED Indicators



1. When the player is on and doesn't receive signal from transmitter, LED will turn to be solid red and "bar" symbol flashes. (Symbol flashes with solid red LED.)



2. When the player is on and with low battery, LED will turn to be solid red and "battery" symbol flashes. (Symbol flashes with solid red LED.)



3. When the player is on under non-signal and low-battery status, 2 symbols will flash interchangeably with solid red LED. (Both symbols flash interchangeably with solid red LED.)



4. Except above 3 situations, LED will stay green under normal operation.



5. The screen will return to default (currently used channel/custom label) if any button is pressed under the status of flashing symbol. Solid red LED keeps unchanged.

Volume Adjustment



1. This adjustment can be done only when the player is in lock mode.



2. Press button + or - to adjust the volume (default: level 8, 16 levels in total).

3. When the volume is at lowest level, player will be muted and its screen will show below.



4. After the volume is successfully adjusted, the symbol disappears if idled for 1 second and OLED shows currently used channel/custom label.

Auto-Off

1. The player will be off automatically if no signal is received for 20 minutes.
2. This function can be disabled via proprietary software.

Tone

1. Default is disabled to work with competitors' system.
2. This function can be disabled via proprietary software.

Battery Status Check



1. When the player is off, press and hold both - and power ⏻ buttons.
2. The screen will show current battery status and stay for 2 seconds, then be off.

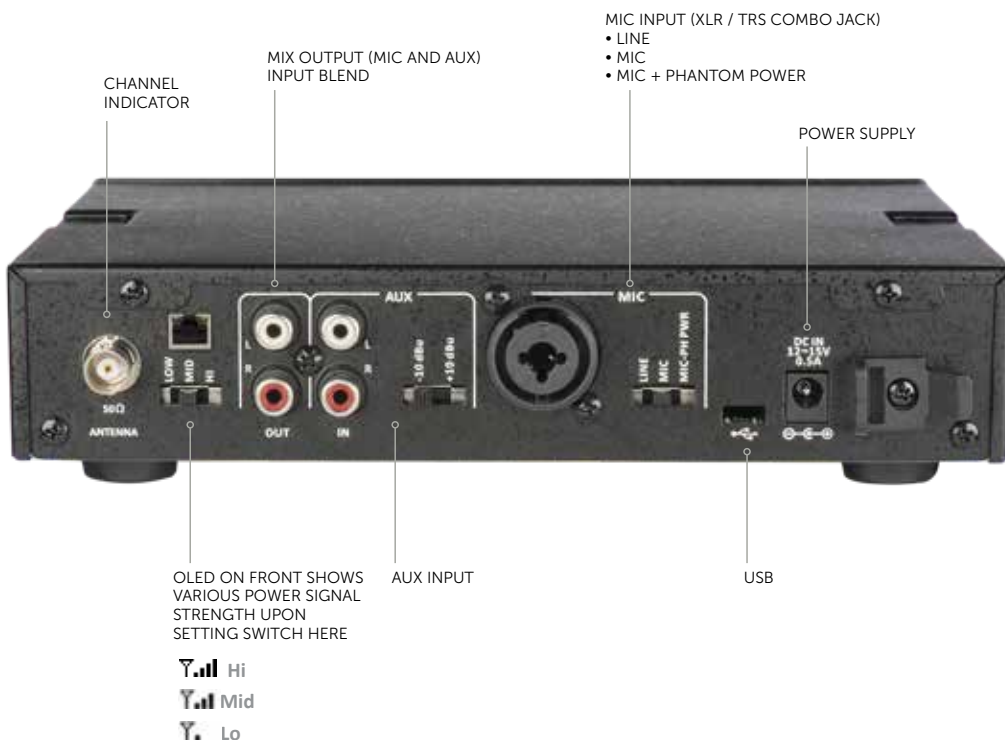
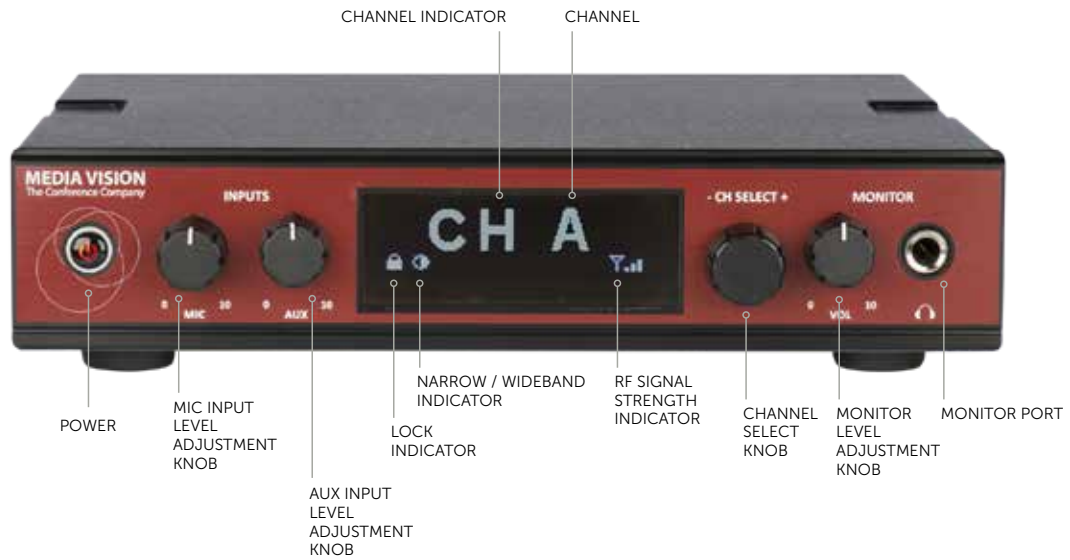


Quick Reference: Stationary Transmitter (MV-ALS-STFM)

MV-ALS-STFM-D (Dante-enabled version) Dante™

Unit Controls

72-76 MHz FM, 57 programmable channels, balanced and unbalanced inputs, balanced outputs, OLED display, access to software interface. Tabletop or rack-mounting, power cord and USB programming cable included, optional Helical or Remote Antenna needed (not included).






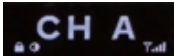


Quick Reference: Stationary Transmitter (MV-ALS-STFM)



Turn-On

1. Press and hold power button for 1 second till logo "Media Vision" shows up, which will stay for 2 seconds.
2. The screen shows default channel (E) or custom label, symbol "wideband" (), symbol "lock" (), and signal strength (). The system will be locked immediately when it is turned on.



3. The screen becomes dim after 5 seconds and starts to scroll.

Turn-Off



1. Press and hold power button for 2 seconds and logo "Media Vision" shows up for 2 seconds.




2. Then, "OFF" shows up for 1 second.
3. The player turns off.

Channel Lock



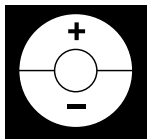
1. The system will automatically be locked after it's been turn on.



2. Press and hold "CH SELECT" button for 3 seconds to release the system from lock mode. Symbol  disappears from the screen.

Channel Change




1. Turn "CH SELECT" button clockwise or counterclockwise to change the channel when the device is in unlock mode.
2. When preferred channel is chosen, press "CH SELECT" button again to confirm the setting. If not, the system will stay in previously selected channel after being idled for 10 seconds.
3. The system will be in lock mode again after above setting is completed.



Reset to Default Setup

1. Press and hold "CH SELECT" button to turn the system on.
2. The system will be reset to default settings which include followings.
 - 2-1: Channel E
 - 2-2: Seventeen wideband channels are enabled
 - 2-3: Custom labels are removed

Signal Strength

1. Symbol "signal strength" varies upon strength setting on the back side of the system.
 - 2-1  Hi
 - 2-2  Mid
 - 2-3  Lo



Portable Transmitter (MV-ALS-PTFM) Quick Reference

Portable Transmitter

72-76 MHz FM, operating range: up to 100 feet, 57 programmable channels, settings lock, OLED display.
Needed (not included): microphone, optional rechargeable or alkaline AA batteries.





Portable Transmitter (MV-ALS-PTFM) Quick Reference



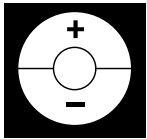
Turn-On

1. Press and hold power button for 1 second till logo "Media Vision" shows up.
2. Logo "Media Vision" shows up for 2 seconds, and then OLED becomes dim.
3. The screen shows default (CH E)/previously used channel or custom label, symbols of battery , lock , and signal strength



Turn-Off

1. Press and hold power button for 2 seconds and logo "Media Vision" shows up for 2 seconds.
2. Then, "OFF" shows up for 1 second.
3. The player turns off.



Channel Change

1. Press + or – to change the channel when the device is in unlock mode.
2. In unlock mode, channel will flash and be ready for change.
3. 2 band types, wideband only (17 channels) or both wide- and narrowband (57 channels), are available for the player. Default type is "wideband" channel A~T).
 - Wideband: A~T
 - Wideband and narrow band: A~T & 1~40
4. To scroll channels rapidly, keep pressing + or – to change the channel.
5. Once selected channel is confirmed, press SET button (o) to confirm the channel. If not, the OLED will show previously used channel after being idle for 10 seconds.

Channel Lock

1. The player will automatically be locked immediately when it's turned on.
2. When the channel is changed and SET button is press to confirm the change (or idled for 10 seconds without pressing any button), the player will automatically enter lock mode and symbol shows up.
3. To release the player from lock mode, press both + and – at the same time for 1 second until symbol disappears.





Portable Transmitter (MV-ALS-PTFM) Quick Reference

LED Indicators



(Symbol flashes with solid red LED)

1. When the player is on and with low battery, LED will turns to be solid red and “battery” symbol flashes.
2. Except above situation, LED will stay green under normal operation.



3. The screen will return to default (currently used channel/custom label) if any button is pressed under the status of flashing symbol. Solid red LED keeps unchanged.

Mute



(Both symbol and green LED flash)

1. Press power (⏻) button for 0.5 second to enter MUTE mode.



2. When the player is muted, both green LED and “mute” symbol flash. (Both symbol and green LED flash.)



(Both symbols flash interchangeably with flashing red LED)

3. When the player is muted under low-battery status, 2 symbols will flash interchangeably with flashing red LED. (Both symbols flash interchangeably with flashing red LED.)



4. The screen will return to default (currently used channel/custom label) if any button is pressed under the status of flashing symbol. Solid red LED keeps unchanged.

MIC-Level Adjustment



1. Press and hold SET (⏻) to turn the device on.
2. The screen will show default (Hi) for level adjustment.

3. Press + or 1 button to scroll the option.



4. When preferred level is selected, leave it for 5 seconds or press power (⏻) button to confirm the setting.

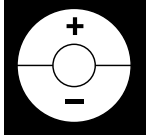


Battery Status Check

1. When the player is off, press and hold both – and power (⏻) buttons.
2. The screen will show current battery status and stay for 2 seconds, then be off.



Portable Transmitter (MV-ALS-PTFM) Quick Reference



Reset to Default Setting

1. Press and hold both + and – buttons to turn the player on.
2. The player will be reset to default settings which include followings.
 - 2-1: Channel E
 - 2-2: Seventeen wideband channels are enabled
 - 2-3: Custom labels are removed

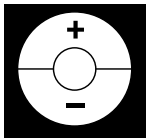
Charging

1. The player won't be charged when it's connected with PC via micro USB.
2. Solid red LED shows when the player is being charged. When fully charged, LED turns to be solid green.
3. Red LED will flash when following situations occur.
 - 3-1: without batteries inside
 - 3-2: batteries are not rechargeable
 - 3-3: battery is defective
4. The screen of players will vary upon different occasions. See the table below

	Player on	Player off
Wall-Wart	<ol style="list-style-type: none"> 1. Still on 2. Battery blocks scrolls. Full battery blocks when fully charged. 	<ol style="list-style-type: none"> 1. Still off 2. No symbols on the screen
Charger	<ol style="list-style-type: none"> 1. Auto-off 2. No symbols on the screen 	
PC	<ol style="list-style-type: none"> 1. Autooff 2. Logo "Media Vision" shows up for 2 seconds, and then USB symbol displays. 3. LED indicator is the only way to know the charging status when PC connected. 	

Note:

Maximum charging time for players is 8 hours and LED will turns to be green when time is due.



Channel Select Mode

1. Press and hold + button to turn the player on and enter Channel Select Mode.



2. Channels will display from beginning (CH A) and white background stands for being "selected". All channels are selected by default. Press + button to change channels.



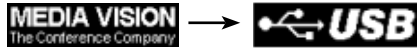
3. To disable a channel, press SET button and the background turns to be black. To re-select the channel, simply press SET button again.

4. All changes that have been done will automatically be confirmed if the player is idled for 5 seconds or any button is pressed.

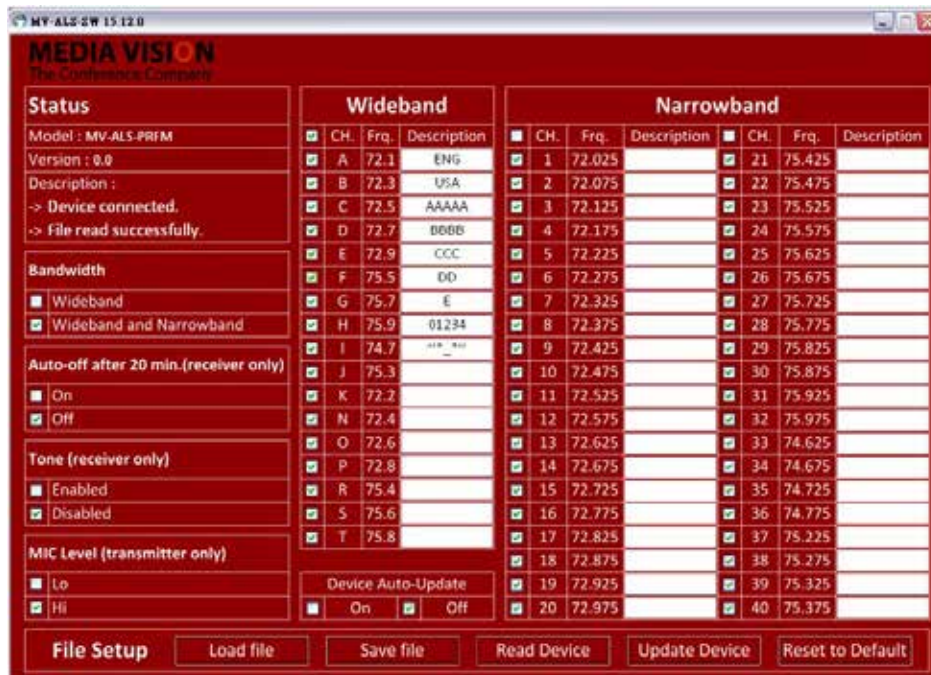
Software Operation: Portable Receiver (MV-ALS-PRFM)

Uploading Receiver Software

1. When the player is connected with PC, it will show logo "Media Vision" for 2 seconds, and then symbol "USB".



2. Status column in proprietary software shows message of successful connection.



3. Now, the player is ready for being uploaded. 5 settings can be done in this software.

- 3-1: Channel selected or disabled
- 3-2: Custom label edited
- 3-3: Wideband only or both wide and narrowband setup
- 3-4: Tone enabled or disabled
- 3-5: Auto-off enabled or disabled

Others

1. The screen will become dim if being idled for 5 seconds.

Note:

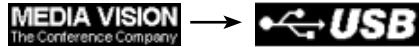
1. For better understanding of the software, please read its manual.
2. The player won't work while being uploaded.
3. The player will be off when being disconnected from PC.

USB Upload

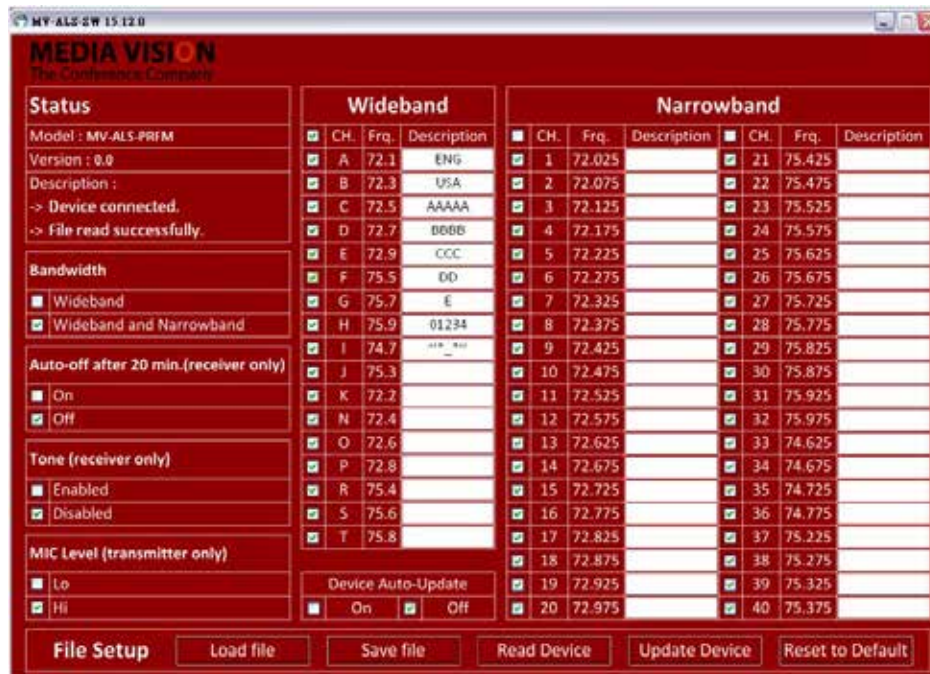
Software Operation: Stationary and Portable Transmitter (MV-ALS-STFM, MV-ALS-PTFM)

Uploading Transmitter Software

1. After being plugged in the socket, it can be uploaded while micro USB is connected with PC.
2. When the system is connected with PC, it will show logo "Media Vision" for 2 seconds, and then symbol "USB".



3. Status column in proprietary software shows message of successful connection.



4. Now, the player is ready for being uploaded. 5 settings can be done in this software.

- 3-1: Channel selected or disabled
- 3-2: Custom label edited
- 3-3: Wideband only or both wide and narrowband setup

Others

1. The screen will become dim if being idled for 5 seconds.

Note:

1. For better understanding of the software, please read its manual.
2. The player won't work while being uploaded.
3. The player will be off when being disconnected from PC.

FCC statement

NOTE: This equipment has been tested and found to comply with the limits for a Class B digital device, pursuant to part 15 of the FCC Rules. These limits are designed to provide reasonable protection against harmful interference in a residential installation.

This equipment generates, uses and can radiate radio frequency energy and, if not installed and used in accordance with the instructions, may cause harmful interference to radio communications. However, there is no guarantee that interference will not occur in a particular installation.

If this equipment does cause harmful interference to radio or television reception, which can be determined by turning the equipment off and on, the user is encouraged to try to correct the interference by one or more of the following measures:

- Reorient or relocate the receiving antenna.
- Increase the separation between the equipment and receiver.
- Connect the equipment into an outlet on a circuit different from that to which the receiver is connected.
- Consult the dealer or an experienced radio/TV technician for help.

Changes or modifications not expressly approved by the party responsible for compliance could void the user's authority to operate the equipment.

This device complies with part 15 of the FCC Rules. Operation is subject to the following two conditions:

- (1) This device may not cause harmful interference, and
- (2) this device must accept any interference received, including interference that may cause undesired operation.