



802.11b/g/n 1T1R Combo Card

RT3290

User's Manual

Federal Communication Commission Interference Statement

This equipment has been tested and found to comply with the limits for a Class B digital device, pursuant to Part 15 of the FCC Rules. These limits are designed to provide reasonable protection against harmful interference in a residential installation. This equipment generates, uses and can radiate radio frequency energy and, if not installed and used in accordance with the instructions, may cause harmful interference to radio communications. However, there is no guarantee that interference will not occur in a particular installation. If this equipment does cause harmful interference to radio or television reception, which can be determined by turning the equipment off and on, the user is encouraged to try to correct the interference by one of the following measures:

- Reorient or relocate the receiving antenna.
- Increase the separation between the equipment and receiver.
- Connect the equipment into an outlet on a circuit different from that to which the receiver is connected.
- Consult the dealer or an experienced radio/TV technician for help.

This device complies with Part 15 of the FCC Rules. Operation is subject to the following two conditions: (1) This device may not cause harmful interference, and (2) this device must accept any interference received, including interference that may cause undesired operation.

FCC Caution: Any changes or modifications not expressly approved by the party responsible for compliance could void the user's authority to operate this equipment.

IMPORTANT NOTE:

FCC Radiation Exposure Statement:

This equipment complies with FCC radiation exposure limits set forth for an uncontrolled environment. This equipment should be installed and operated with minimum distance 20cm between the radiator & your body. This transmitter must not be co-located or operating in conjunction with any other antenna or transmitter.

IEEE 802.11b or 802.11g operation of this product in the U.S.A. is firmware-limited to channels 1 through 11.

This device is intended only for OEM integrators under the following conditions:

- 1) The antenna must be installed such that 20 cm is maintained between the antenna and users, and
- 2) The transmitter module may not be co-located with any other transmitter or antenna,
- 3) For all products market in US, OEM has to limit the operation channels in CH1 to CH11 for 2.4G band by supplied firmware programming tool. OEM shall not supply any tool or info to the end-user regarding to Regulatory Domain change.

As long as 3 conditions above are met, further transmitter test will not be required. However, the OEM integrator is still responsible for testing their end-product for any additional compliance requirements required with this module installed (for example, digital device emissions, PC peripheral requirements, etc.).

IMPORTANT NOTE: In the event that these conditions can not be met (for example certain laptop configurations or co-location with another transmitter), then the FCC authorization is no longer considered valid and the FCC ID can not be used on the final product. In these circumstances, the OEM integrator will be responsible for re-evaluating the end product (including the transmitter) and obtaining a separate FCC authorization.

IMPORTANT NOTE:

if the EUT does not fulfill the listed requirements:

The transmitter module may not be co-located with any other transmitter or antenna.

As long as conduction above is met, further transmitter test will not be required. However, the OEM integrator is still responsible for testing their end-product for any additional compliance requirements required with this module installed (for example, digital device emissions, PC peripheral requirements, etc.). This equipment should be installed such way that the transmit antenna connected should maintain minimum 2.5cm distance to the users. SAR measurement to the end product is required, if the EUT does not fulfill the listed requirements:

- portable Laptop/Notebook/Netbook and Tablet Computer configurations
- minimum separation distance of at least 2.5 cm between radiating structures and the user

End Product Labeling

This transmitter module is authorized only for use in device where the antenna may be installed such that 20 cm may be maintained between the antenna and users. The final end product must be labeled in a visible area with the following: "Contains FCC ID: VQF-RT3290".

Manual Information To the End User

The OEM has to be aware not to provide information to the end user regarding how to install or remove this RF module in the user's manual of the end product which integrates this module.

The end user manual shall include all required regulatory information/warning as show in this manual.

The maximum allowed ambient temperature of the device is 40 degrees Celsius.

Industry Canada Statement

This device complies with RSS-210 of the Industry Canada Rules. Operation is subject to the following two conditions:

- 1) this device may not cause interference and
- 2) this device must accept any interference, including interference that may cause undesired operation of the device

This device has been designed to operate with an antenna having a maximum gain of 3.7dBi. Antenna having a higher gain is strictly prohibited per regulations of Industry Canada. The required antenna impedance is 50 ohms.

To reduce potential radio interference to other users, the antenna type and its gain should be so chosen that the EIRP is not more than required for successful communication.

IMPORTANT NOTE:

IC Radiation Exposure Statement:

This equipment complies with IC radiation exposure limits set forth for an uncontrolled environment. This equipment should be installed and operated with minimum distance 20cm between the radiator & your body.

This device is intended only for OEM integrators under the following conditions:

1. The antenna must be installed such that 20 cm is maintained between the antenna and users, and
2. The transmitter module may not be co-located with any other transmitter or antenna,
3. For all products market in CANADA, OEM has to limit the operation channels in CH1 to CH11 for 2.4GHz band by supplied firmware programming tool. OEM shall not supply any tool or info to the end-user regarding to Regulatory Domain change.

As long as 3 conditions above are met, further transmitter test will not be required. However, the OEM integrator is still responsible for testing their end-product for any additional compliance requirements required with this module installed (for example, digital device emissions, PC peripheral requirements, etc.).

IMPORTANT NOTE: In the event that these conditions can not be met (for example certain laptop configurations or co-location with another transmitter), then the IC authorization is no longer considered valid and the IC ID can not be used on the final product. In these circumstances, the OEM integrator will be responsible for re-evaluating the end product (including the transmitter) and obtaining a separate IC authorization.

IMPORTANT NOTE:

if the EUT does not fulfill the listed requirements:

The transmitter module may not be co-located with any other transmitter or antenna.

As long as conduction above is met, further transmitter test will not be required. However, the OEM integrator is still responsible for testing their end-product for any additional compliance requirements required with this module installed (for example, digital device emissions, PC peripheral requirements, etc.). This equipment should be installed such way that the transmit antenna connected should maintain minimum 2.5cm distance to the users. SAR measurement to the end product is required, if the EUT does not fulfill the listed requirements:

- portable Laptop/Notebook/Netbook and Tablet Computer configurations
- minimum separation distance of at least 2.5 cm between radiating structures and the user

End Product Labeling

The final end product must be labeled in a visible area with the following: "Contains TX IC : 7542A-RT3290".

Manual Information That Must be Included

The OEM integrator has to be aware not to provide information to the end user regarding how to install or remove this RF module in the user's manual of the end product which integrates this module.

The end user manual shall include all required regulatory information/warning as show in this manual.

以下警語適用台灣地區

經型式認證合格之低功率射頻電機，非經許可，公司、商號或使用者均不得擅自變更頻率、加大功率或變更原設計之特性及功能。

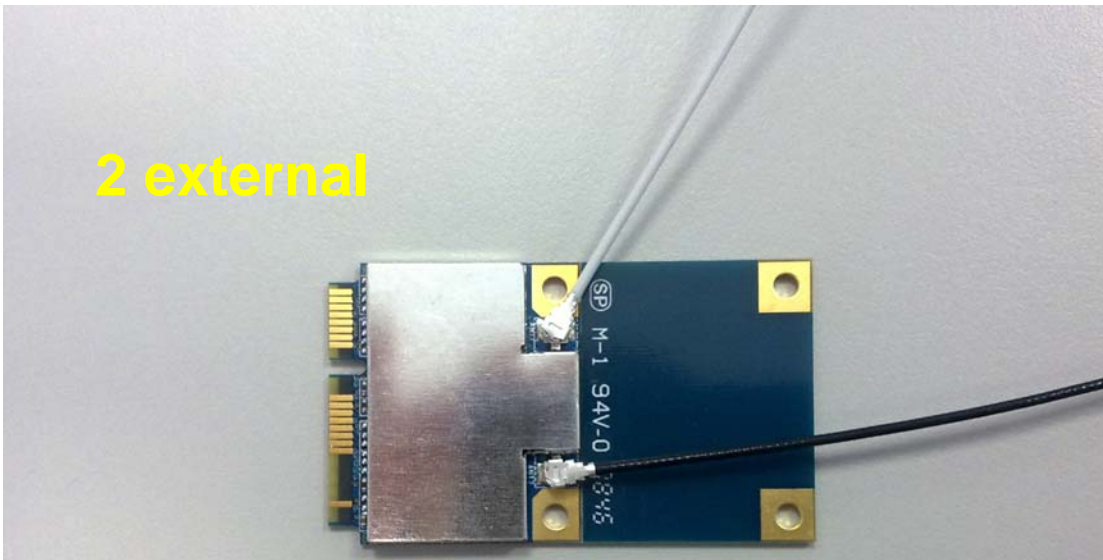
低功率射頻電機之使用不得影響飛航安全及干擾合法通信；經發現有干擾現象時，應立即停用，並改善至無干擾時方得繼續使用。前項合法通信，指依電信法規定作業之無線電通信。低功率射頻電機須忍受合法通信或工業、科學及醫療用電波輻射性電機設備之干擾。

本模組於取得認證後將依規定於模組本體標示審合格籤，並要求平台上標示「本產品內含射頻模組：ID 編號」

Hardware Quick Installation Guide

Installing the **Wireless Mini PCI Express Module**

1. Power down the computer.
2. Plug the **Wireless PCI Express Minicard Module** board to motherboard minicard slot
3. Connect 2 external antennas used I-PEX connector for WiFi antenna.
4. Power on the computer.



Un-installing the **Wireless Mini PCI Express Module**

1. Power down the computer
2. Removed 2 external WiFi antennas from the **Wireless Mini PCI Express Module**
3. Carefully removed the **Wireless PCI Express Minicard Module** from the motherboard minicard slot.
4. Power on the computer.

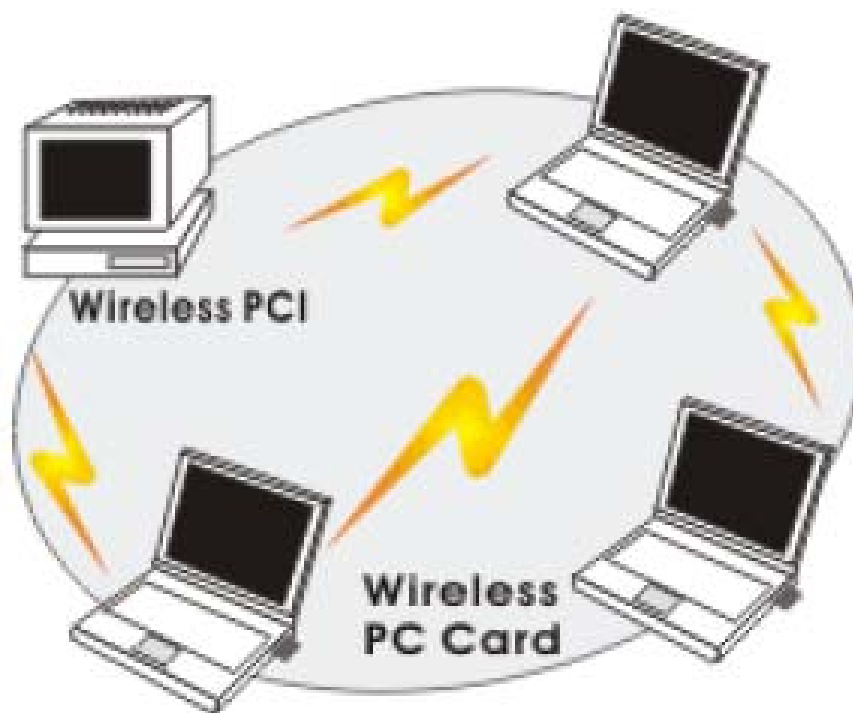
INTRODUCTION

The 11b/g/n 1T1R WLAN Mini Card is a device that allows you connect your computer to a wireless local area network (LAN). A wireless LAN allows your system to use wireless Radio Frequency (RF) technology to transmit and receive data without physically attaching to the network. The Wireless protocols that come with this product ensure data security and isolation from interference generated by other radio frequencies. This card also allows you to take full advantage of your computer's mobility with access to real-time information and online services anytime and anywhere. In addition, this device eliminates the bother of pulling cable through walls and under furniture. It even allows you to place your system in locations where cabling is impossible. Modifying and augmenting networks has never been so easy.

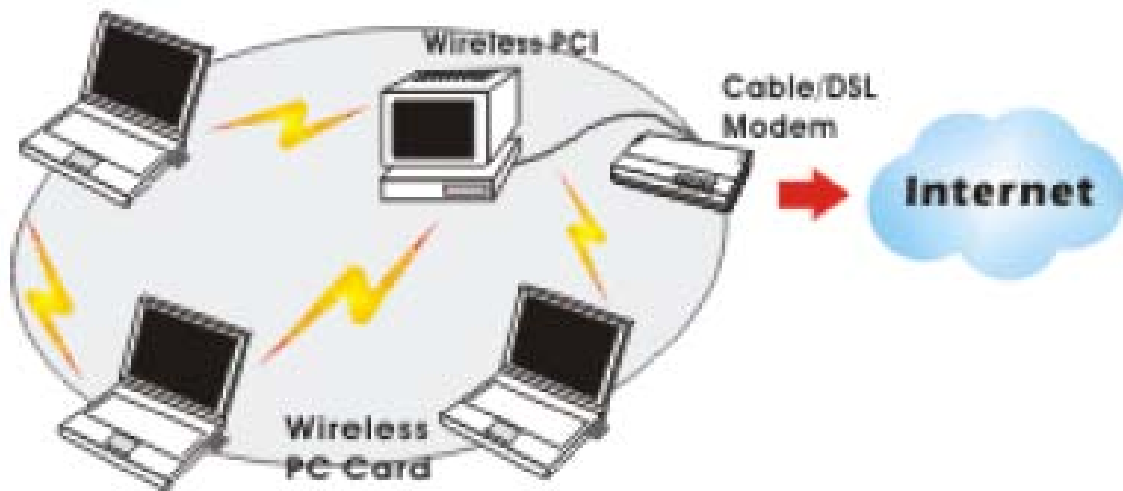
Wireless Network Options

The Peer-to-Peer Network

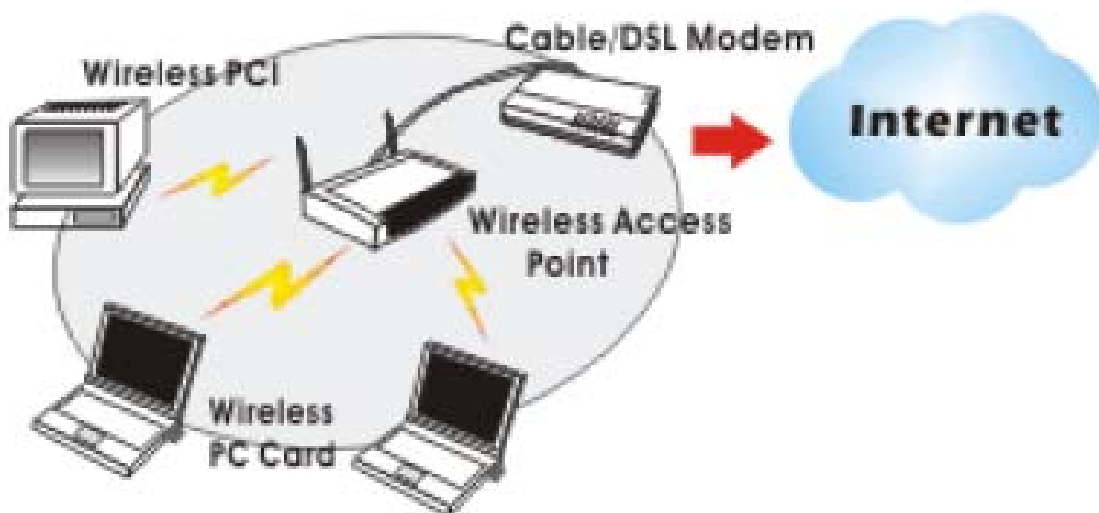
This network installation lets you set a small wireless workgroup easily and quickly. Equipped with wireless PC Cards or wireless PCI, you can share files and printers between each PC and laptop.



You can also use one computer as an Internet Server to connect to a wired global network and share files and information with other computers via a wireless LAN.



The Access Point Network The network installation allows you to share files, printers, and Internet access much more conveniently. With Wireless LAN Cards, you can connect wireless LAN to a wired global network via an Access Point.



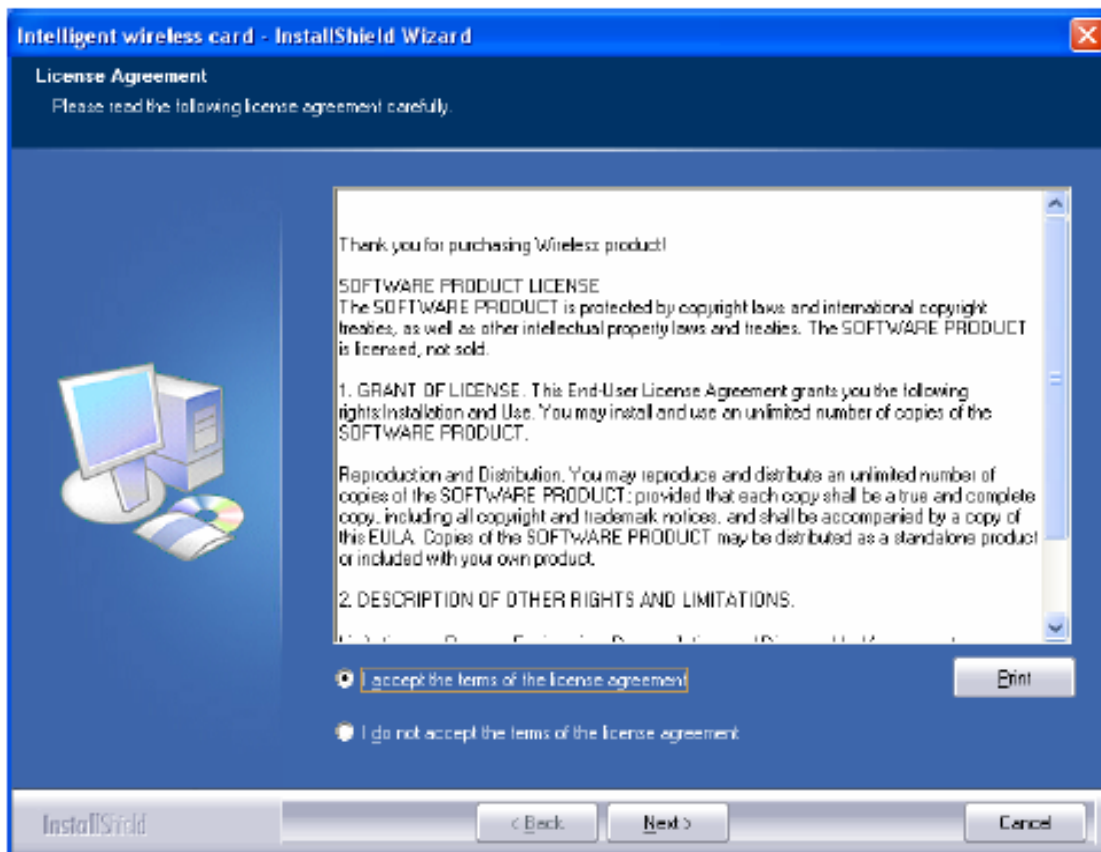
SOFTWARE INSTALLATION

Install the device

1. Make sure the computer is turned off. Remove the expansion slot cover from the computer.
2. Carefully slide the 11b/g/n 1T1R WLAN Mini Card into the mini PCI slot. Push evenly and slowly and ensure it is properly seated.
3. After the device has been connected to your computer, turn on your computer. Windows will detect the new hardware and then automatically copy all of the files needed for networking.

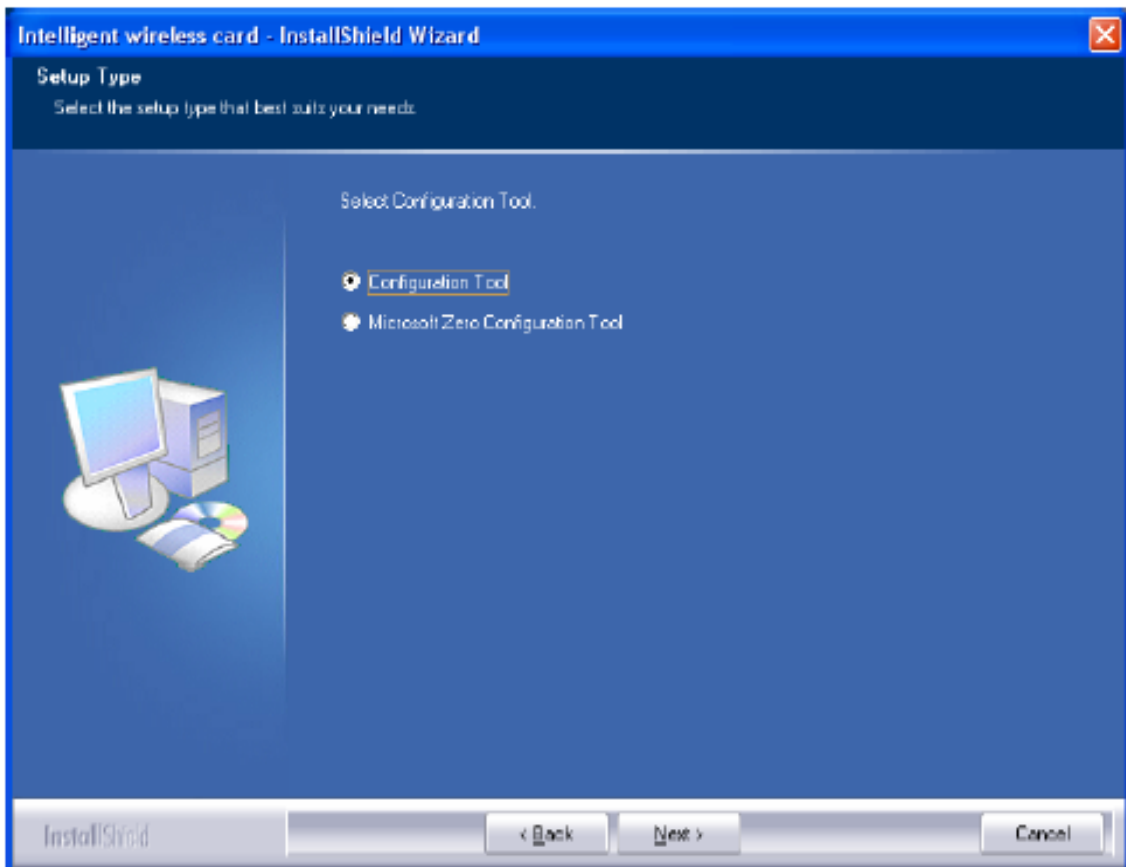
Install the Driver & Utility

1. Exit all Windows programs. Insert the included CD-ROM into your computer. The CD-ROM will run automatically.
2. When the License Agreement screen appears, please read the contents and select "I accept the terms of the license agreement " then click Next to continue.

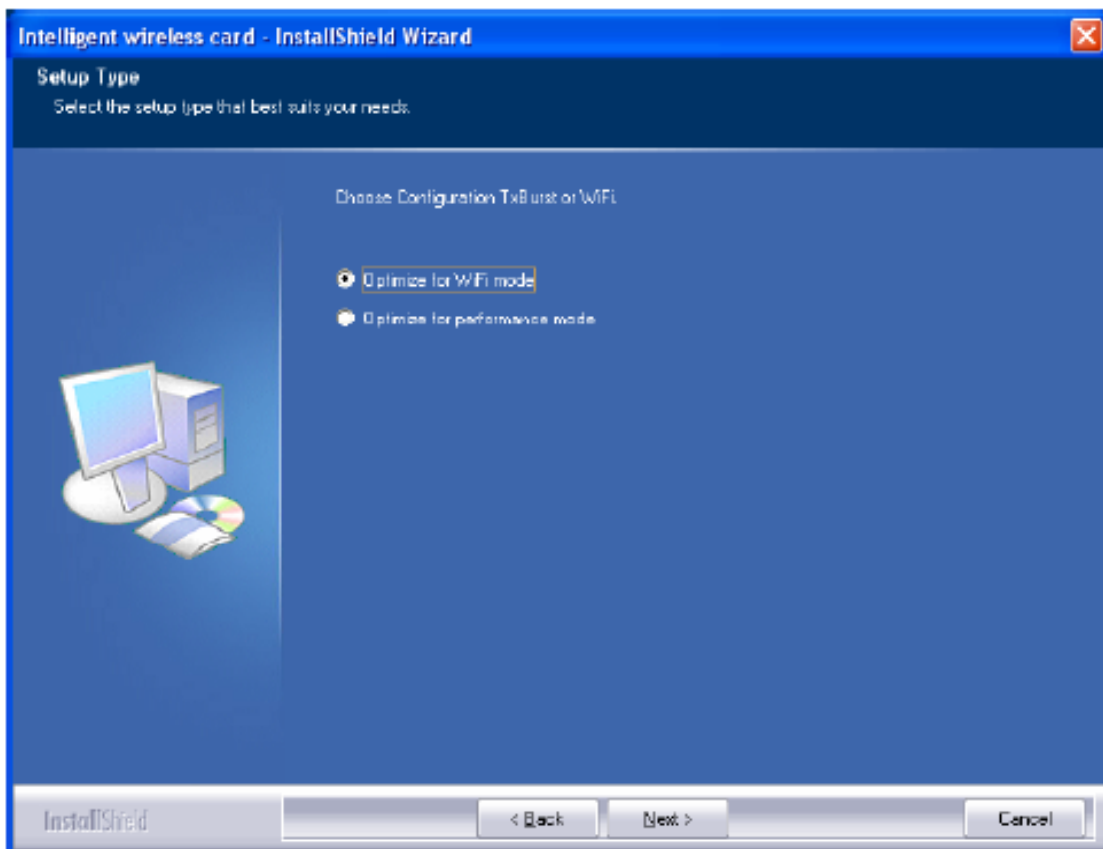


3. Select the check box to choose a Configuration Tool from the listed two choices.
 - Configuration Tool: Choose to use our configuration utility.
 - Microsoft Zero Configuration Tool: Choose to use Windows XP's built-in Zero Configuration Utility (ZCU).

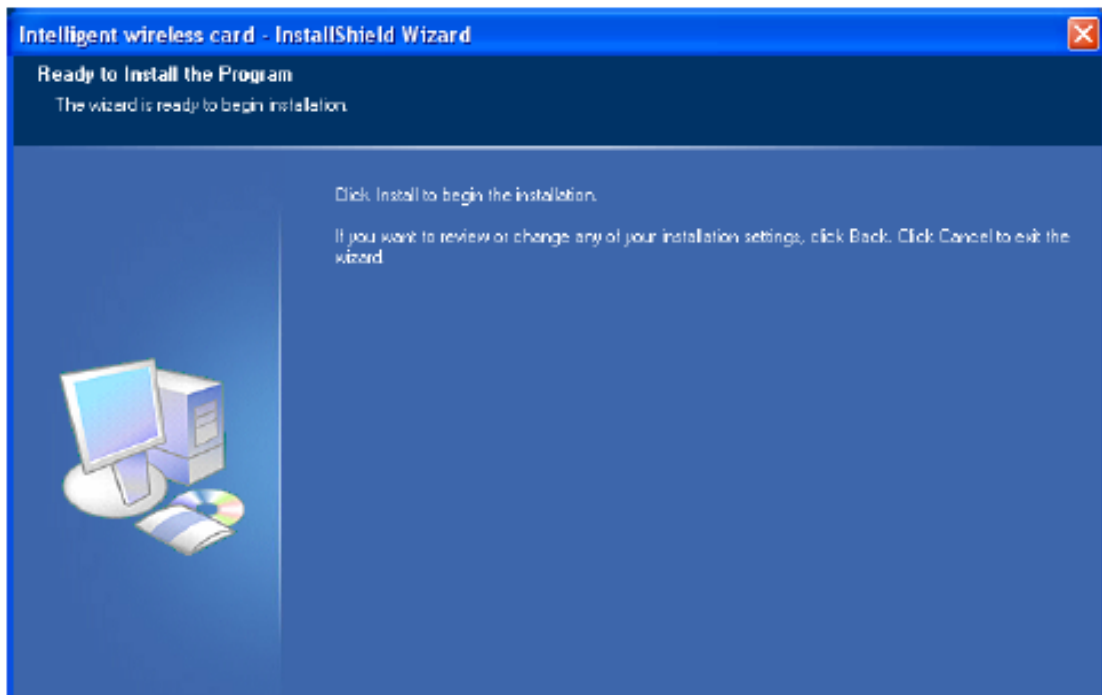
Click Next to continue.



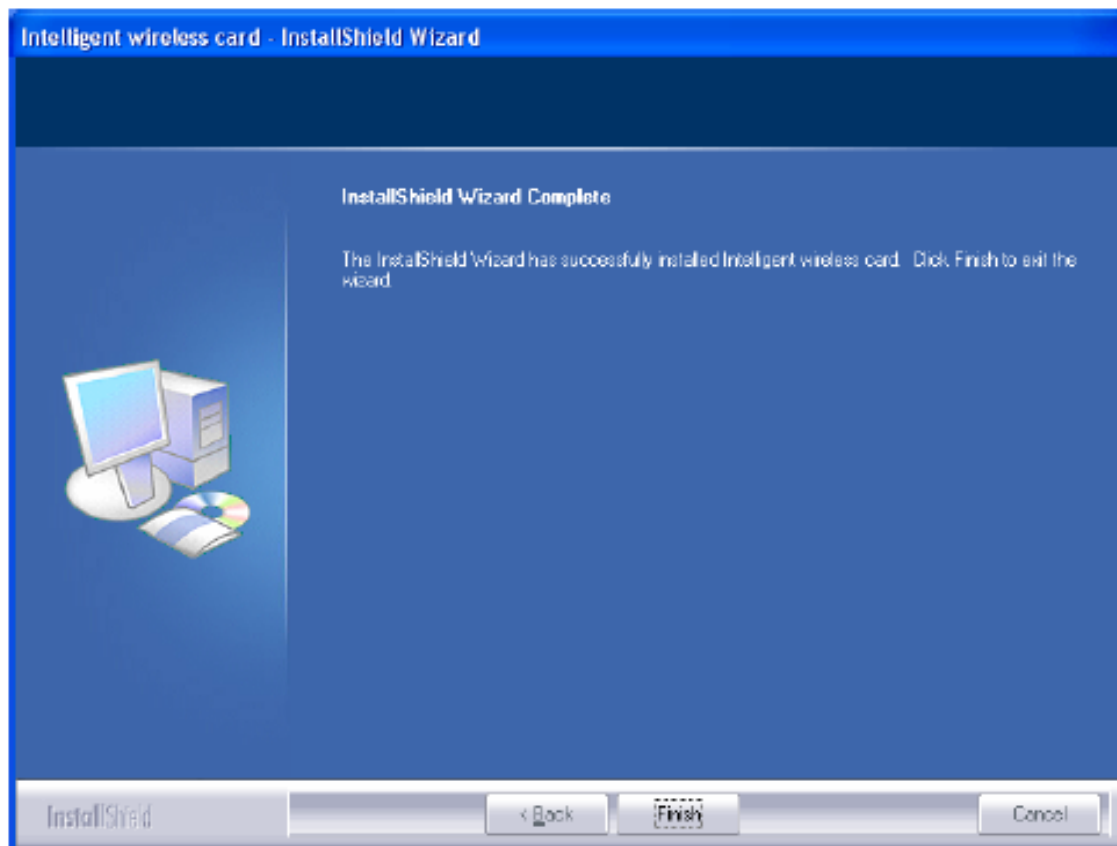
4. There are two modes for you to choose in this screen, either choose WiFi mode or performance mode (TxBurst mode). This mode selection screen is set for the default mode shown in the utility screen, you can still change its mode later in the utility screen. Click Next to continue.



5. When you are prompted the following message, please click Install to begin the installation.



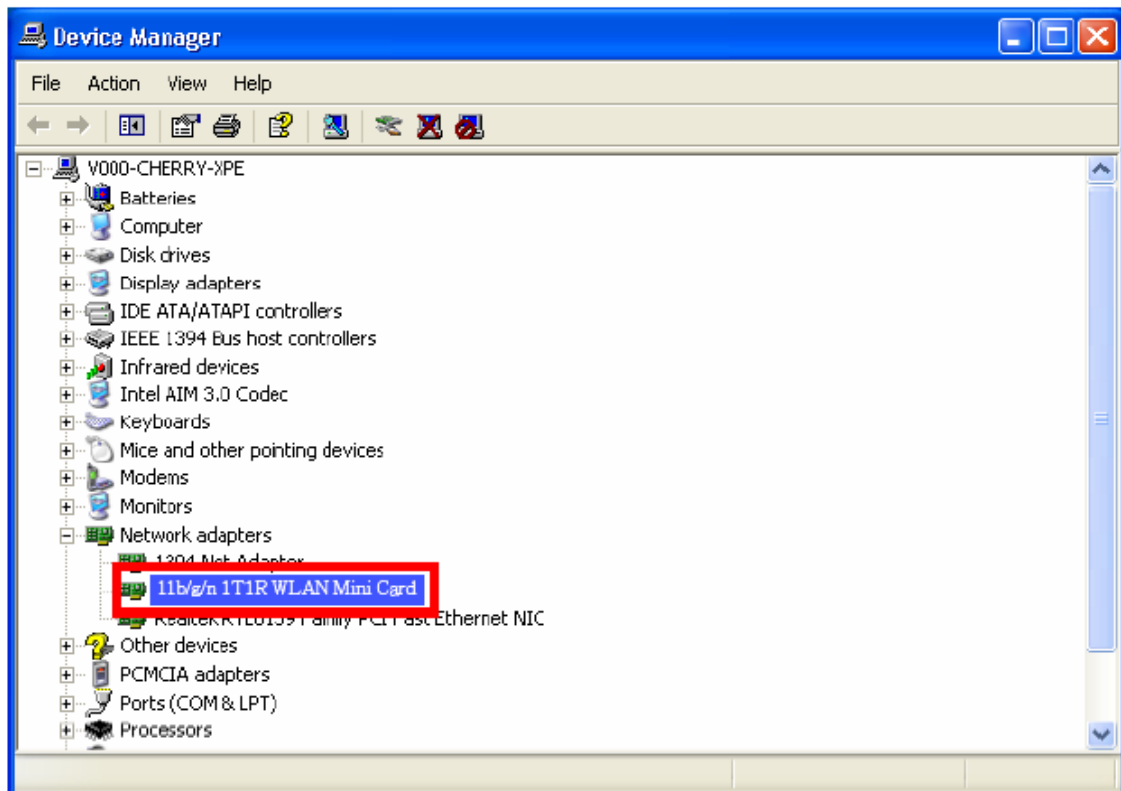
6. When the following screen appears, click Finish to complete the software installation.



HARDWARE INSTALLATION

Verification

To verify if the device exists in your computer and is enabled, go to Start > Control Panel > System (> Hardware) > Device Manager. Expand the Network Adapters category. If the 11b/g/n 1T1R WLAN Half Mini Card is listed here, it means that your device is properly installed and enabled.

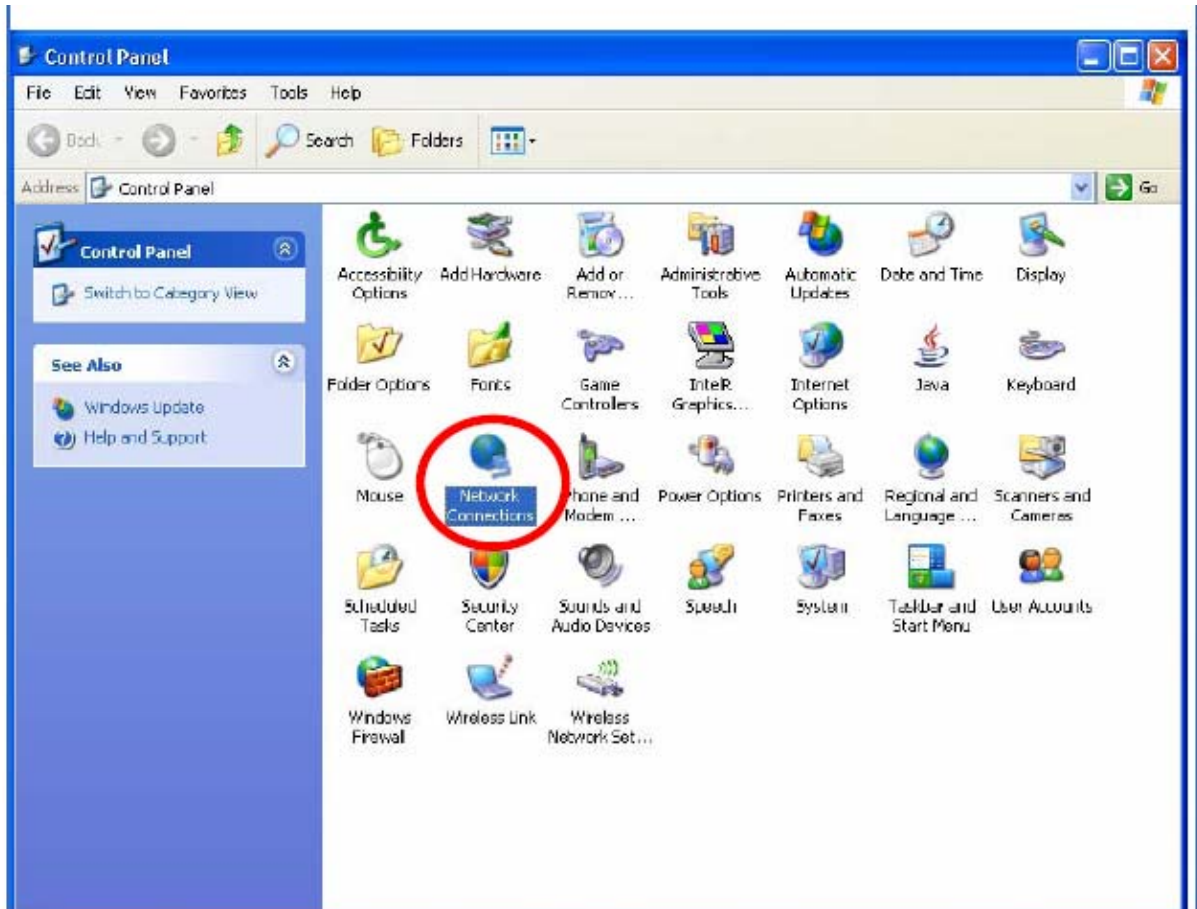


NETWORK CONNECTION

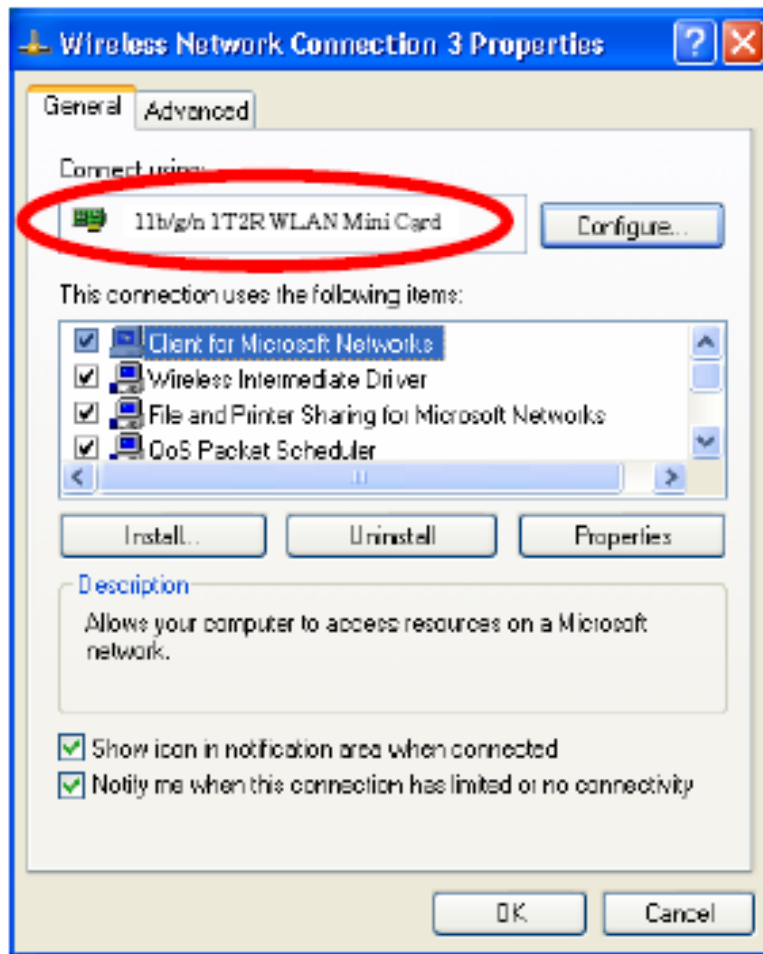
Once the device driver is well installed, a network setting described in the following should be also established.

In Windows 2000/ XP

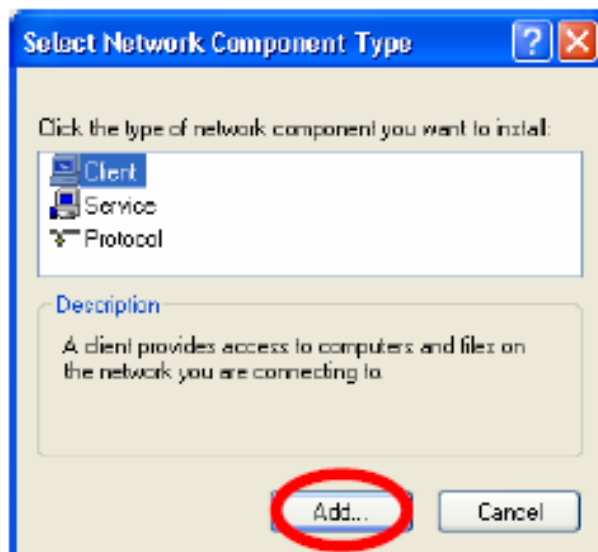
1. (In Windows 2000) Go to Start → Settings → Control Panel → Network and Dial-up Connections Local Area Connection → Properties.
(In Windows XP) Go to Start → Control Panel → Network and Internet Connections → Network Connections → Wireless Network Connection → Properties.



2. Make sure that all the required components are installed.



3. If any components are missing, click on the Install... button to select the Client/Service/Protocol required. After selecting the component you need, click Add... to add it in.

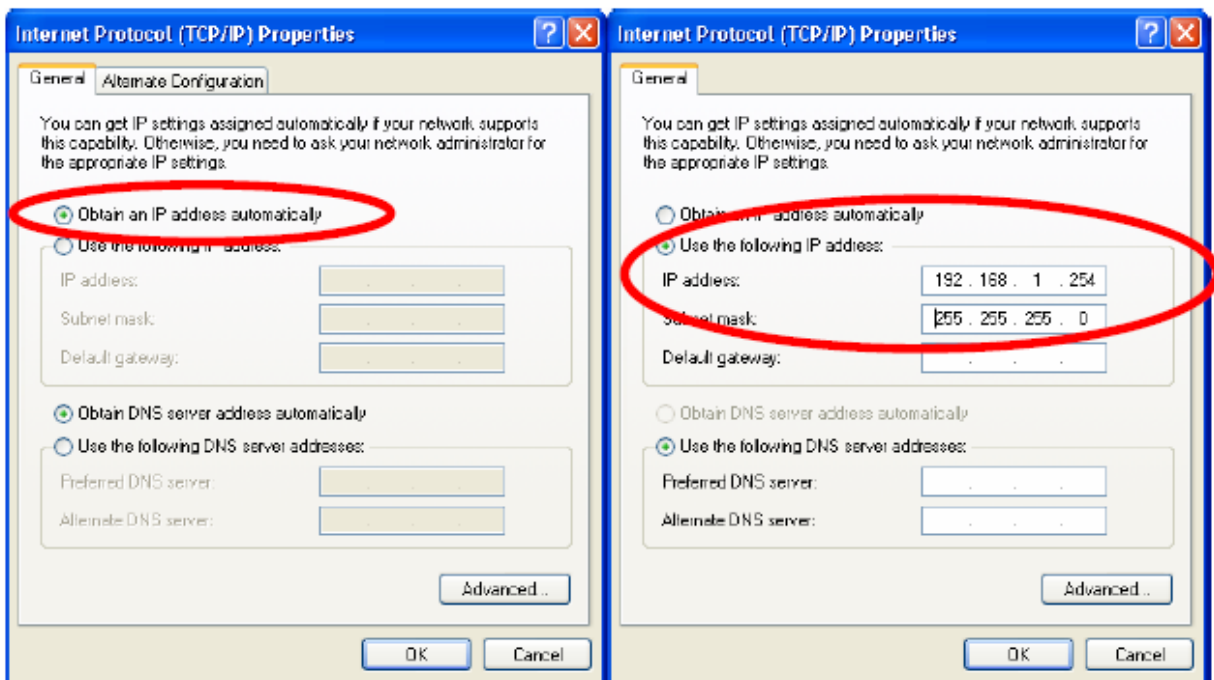


4. For making your computer visible on the network, make sure you have installed File and Printer Sharing for Microsoft Networks.

IP Address

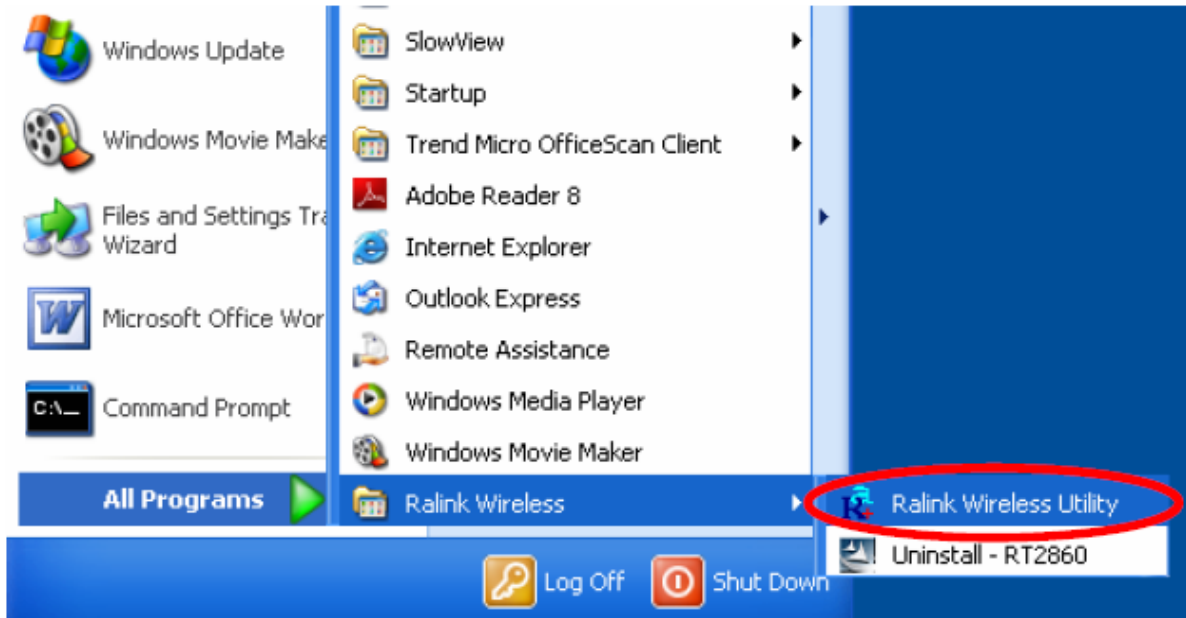
Note: When assigning IP Addresses to the computers on the network, remember to have the IP address for each computer set on the same subnet mask. If your Broadband Router use DHCP technology, however, it won't be necessary for you to assign Static IP Address for your computer.

1. To configure a dynamic IP address (i.e. if your broadband Router has the DHCP technology), check the Obtain an IP Address Automatically option.
2. To configure a fixed IP address (if you broadband Router is not DHCP supported, or when you need to assign a static IP address), check the Use the following IP address option. Then, enter an IP address into the empty field; for example, enter 192.168.1.254 in the IP address field, and 255.255.255.0 for the Subnet Mask.

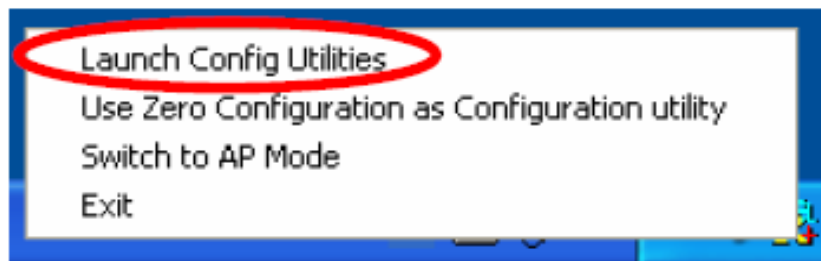


CONFIGURATION UTILITY

After the Wireless adapter has been successfully installed, users can use the included Configuration Utility to set their preference. Go to Start→ (All) Programs→ Ralink Wireless →Ralink Wireless Utility.



You can also open the Configuration Utility by double clicking the icon or right clicking to select Launch Config Utilities.



Intelligent Wireless Utility

Profile

Profile can book keeping your favorite wireless setting among your home, office, and other public hot-spot. You may save multiple profiles, and activate the correct one at your preference. The Profile manager enables you to Add, Edit, Delete and Activate profiles.

The screenshot shows the RaUI Profile manager interface. At the top, there is a navigation bar with icons for Profile, Network, Advanced, Statistics, WMM, and WPS. The main area is divided into two sections. The left section, titled 'Profile List', is currently empty. Below it are buttons for 'Add', 'Edit', 'Delete', and 'Activate'. The right section displays configuration options for a profile, including Profile Name, SSID, Network Type, Authentication, Encryption, Use 802.11k, Channel, Power Save Mode, Tx Power, RTS Threshold, and Fragment Threshold. Below the configuration options, there is a detailed status and performance section. This section includes: Status (802.11g-AP-Wireless), Extra Info (Link is Up), Channel (2 @ 2417 MHz), Authentication (Unknown), Encryption (None), Network Type (Infrastructure), IP Address (192.168.1.33), Sub Mask (255.255.255.0), and Default Gateway (HT). Performance metrics are shown with progress bars: Link Quality (100%), Signal Strength 1 (47%), Signal Strength 2 (55%), Signal Strength 3 (81%), and Noise Strength (26%). Transmit and Receive statistics are also provided, including Link Speed and Throughput, accompanied by small bar charts.

Profile List

Profile Name >>
SSID >>
Network Type >>
Authentication >>
Encryption >>
Use 802.11k >>
Channel >>
Power Save Mode >>
Tx Power >>
RTS Threshold >>
Fragment Threshold >>

Add Edit Delete Activate

Status >> 802.11g-AP-Wireless <-> 00-E0-98-88-88-02
Extra Info >> Link is Up [TxPower:100%]
Channel >> 2 <-> 2417 MHz
Authentication >> Unknown
Encryption >> None
Network Type >> Infrastructure
IP Address >> 192.168.1.33
Sub Mask >> 255.255.255.0
Default Gateway >> HT

BW >> n/a SNR0 >> n/a
GI >> n/a MCS >> n/a SNR1 >> n/a

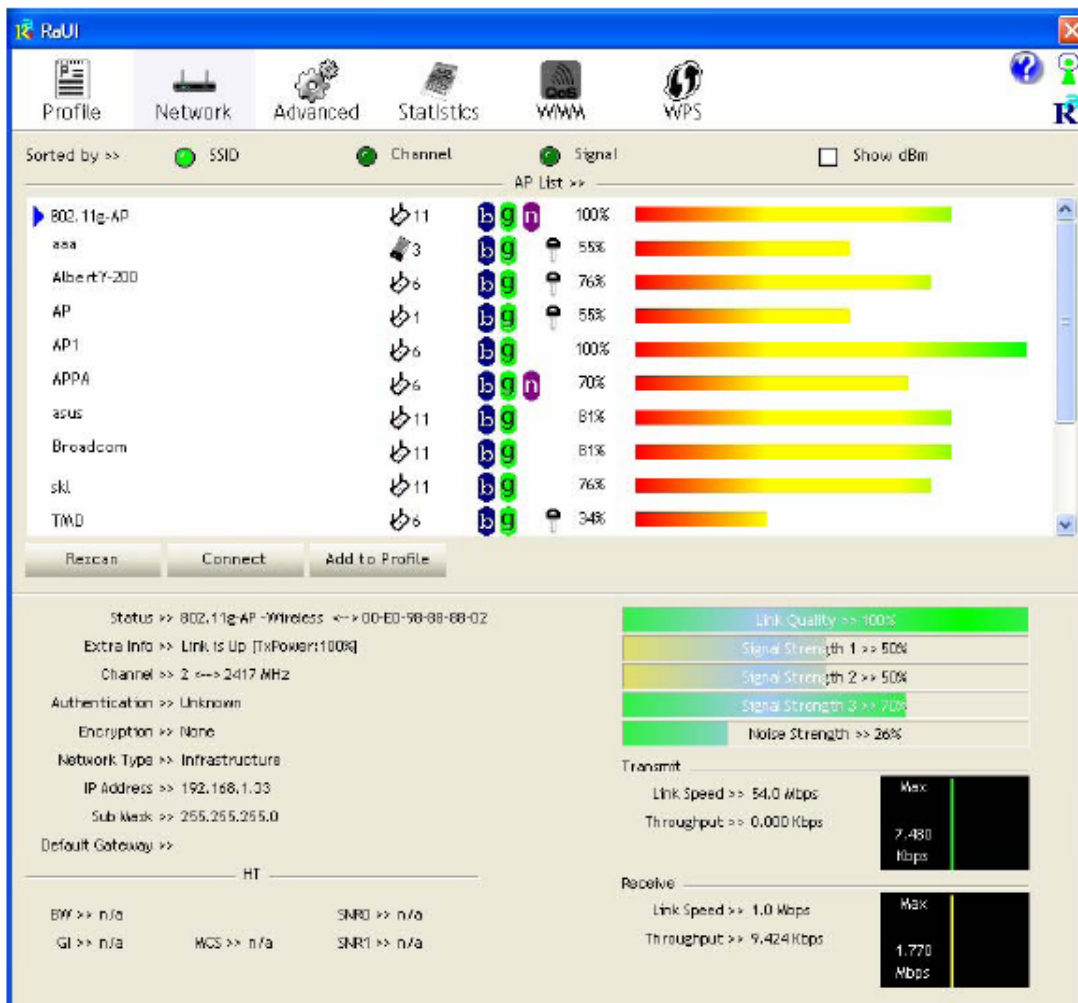
Link Quality >> 100%
Signal Strength 1 >> 47%
Signal Strength 2 >> 55%
Signal Strength 3 >> 81%
Noise Strength >> 26%

Transmit
Link Speed >> 54.0 Mbps
Throughput >> 0.000 Kbps

Receive
Link Speed >> 1.0 Mbps
Throughput >> 9.920 Kbps


Profile Tab	
Profile Name	You may enter a distinctive name of profile in this column. The default is PROF# (# 1, #2, #3....)
SSID	The SSID is the unique name shared among all points in your wireless network.
Network Type	Shows the network type of the device, including infrastructure.
Authentication	Shows the authentication mode.
Encryption	Shows the encryption type.
Use 802.1x	Whether or not use 802.1x feature.
Channel	Shows the selected channel that is currently in use. (There are 13 channels available, depending on the country.)
Power Save Mode	Choose from CAM (Constantly Awake Mode) or Power Saving Mode.
Tx Power	Transmit power, the amount of power used by a radio transceiver to send the signal out.
RTS Threshold	Shows the RTS Threshold of the device.
Fragment Threshold	Shows the Fragment Threshold of the device.
Add	Click to add a profile from the drop-down screen. System Configuration tab:

Network The Network page displays the information of surrounding APs from last scan result. The tab lists the information including SSID, Network type, Channel, Wireless mode, Security-Enabled and Signal.



Network Tab

Sorted by	Indicate that AP list are sorted by SSID, Channel or Signal.
Show dBm	Check the box to show the dBm of the AP list.
SSID	Shows the name of BSS network.
Network Type	Network type in use, Infrastructure for BSS.
Channel	Shows the currently used channel.
Wireless mode	AP support wireless mode. It may support 802.11a, 802.11b, 802.11g or 802.11n wireless mode.

Encryption	Shows the encryption type currently in use. Valid value includes WEP, TKIP, AES, and Not Use.
Signal	Shows the receiving signal strength of specified network.
Rescan	Click to refresh the AP list.
Connect	Select an item on the list and then click to make a connection.
Add to Profile	Select an item on the list and then click to add it into the profile list.
Link status	 <p>The screenshot displays network status information for a wireless connection. On the left, it shows details such as status (102.11g AP - Wireless), extra info (Link is Up (TxPower: 100%)), channel (1 @ 2.417 GHz), authentication (Unknown), encryption (None), network type (Infrastructure), IP address (192.168.1.33), sub mask (255.255.255.0), and default gateway (192.168.1.1). On the right, there are two signal strength meters: 'Signal Strength 1' at 4%, 'Signal Strength 2' at 15%, and 'Signal Strength 3' at 76%. Below these are 'Tx/Rx' throughput meters showing 'Link Speed' and 'Throughput' for both directions, with 'Max' values of 4.0M Kbps for transmit and 107.790 Kbps for receive.</p>
Status	Shows the current connection status. If there is no connection existing, it will show Disconnected.
Extra Info	Shows the link status.
Channel	Shows the current channel in use.
Authentication	Authentication mode used within the network, including Unknown, WPA-PSK, WPA2-PSK, WPA and WPA2.
Encryption	Shows the encryption type currently in use. Valid value includes WEP, TKIP, AES, and Not Use.
Network Type	Network type in use, Infrastructure for BSS.
IP Address	Shows the IP address information.
Sub Mask	Shows the Sub Mask information.
Default Gateway	Shows the default gateway information.
Link Quality	Shows the connection quality based on signal strength and

	TX/RX packet error rate.
Signal Strength 1, 2 and 3	Shows the Receiving signal strength, you can choose to display as percentage or dBm format.
Noise Strength	Shows the noise signal strength.
Transmit	Shows the current Link Speed and Throughput of the transmit rate.
Receive	Shows the current Link Speed and Throughput of receive rate.
Link Speed	Shows the current transmitting rate and receiving rate.
Throughput	Shows the transmitting and receiving throughput in the unit of K bits/sec.

AP information

When you double click on the intended AP, you can see AP's detail information that divides into three parts. They are General, WPS, CCX information. The introduction is as following:

General

General

WPS

CCX

SSID >> 002.11g-Wireless

MAC Address >> 00-E1-90-80-80-02

Authentication Type >> Unknown

Encryption Type >> None

Channel >> 2 <-> 2417 MHz

Network Type >> Infrastructure

Beacon Interval >> 100

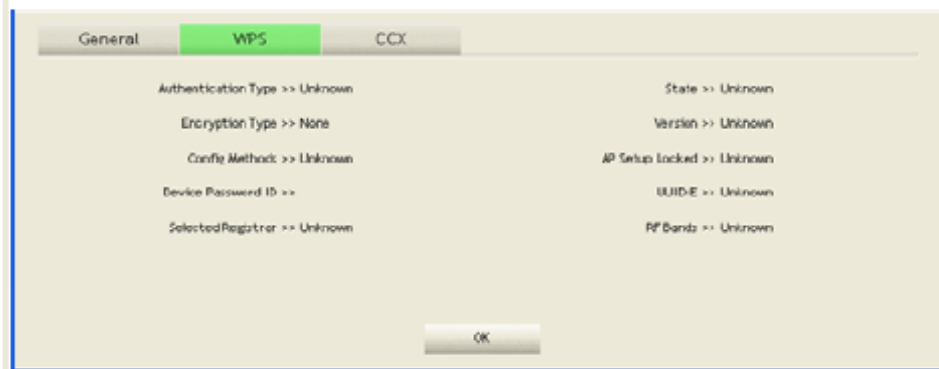
Signal Strength >> 60%

Supported Rates (Mbps):
1, 2, 5.5, 11, 6, 9, 12, 18, 24, 36, 48, 54

General information contain AP's SSID, MAC address, Authentication Type, Encryption Type, Channel, Network Type, Beacon Interval, Signal Strength and Supported Rates.

OK: Click this button to exit the information screen.

WPS



WPS information contains Authentication Type, Encryption Type, Config Methods, Device Password ID, Selected Registrar, State, Version, AP Setup Locked, UUID-E and RF Bands.

Authentication Type: There are four types of authentication modes supported by RaConfig. They are open, Shared, WPA-PSK and WPA system.

Encryption Type: For open and shared authentication mode, the selection of encryption type are None and WEP. For WPA, WPA2, WPA-PSK and WPA2-PSK authentication mode, the encryption type supports both TKIP and AES.

Config Methods: Correspond to the methods the AP supports as an Enrollee for adding external Registrars.

Device Password ID: Indicate the method or identifies the specific password that the selected Registrar intends to use.

Selected Registrar: Indicate if the user has recently activated a Registrar to add an Enrollee. The values are "TRUE" and "FALSE".

State: The current configuration state on AP. The values are "Unconfigured" and "Configured".

Version: WPS specified version.


AP Setup Locked: Indicate if AP has entered a setup locked state.

UUID-E: The universally unique identifier (UUID) element generated by the Enrollee. There is a value. It is 16 bytes.

RF Bands: Indicate all RF bands available on the AP. A dual-band AP must provide it. The values are "2.4GHz" and "5GHz".

OK: Click this button to exit the information screen.

CXX



General WPS **CCX**

CKM >> FALSE
Cmic >> FALSE
Ckip >> FALSE

OK

CCX information contains CCKM, Cmic and Ckip information.
OK: Click this button to exit the information screen.

Advanced

This Advanced page provides advanced and detailed settings for your wireless network.

Profile **Network** **Advanced** **Statistics** **WMM** **WPS**

Wireless mode >> 802.11 B/G/N mix Enable CCX (Cisco Compatible extensions)

Turn on CCKM

Enable Radio Measurements

Non-Serving Channel Measurements Limit: 250 ms (0-2000)

Enable TX Burst

Enable TCP Window Size

Fast Roaming at: -70 dBm

Show Authentication Status Dialog

Select Your Country/Region Code

11 B/G >> 0: CH1-11

Apply

Status >> 802.11g-AP-Wireless <<< 00-E0-90-00-00-02

Extra Info >> Link is Up [TxPower:100%]

Channel >> 2 <<< 2.417 MHz

Authentication >> Unknown

Encryption >> None

Network Type >> Infrastructure

IP Address >> 192.168.1.33

Sub Mask >> 255.255.255.0

Default Gateway >> HT

BW >> n/a SNR >> n/a

GI >> n/a MCS >> n/a SNR1 >> n/a

Link Quality >> 100%

Signal Strength 1 >> 51%

Signal Strength 2 >> 50%

Signal Strength 3 >> 70%

Noise Strength >> 26%

Transmit

Link Speed >> 54.0 Mbps

Throughput >> 0.000 Kbps

Max 0.160 Kbps

Receive

Link Speed >> 1.0 Mbps

Throughput >> 9.920 Kbps

Max 10.416 Kbps

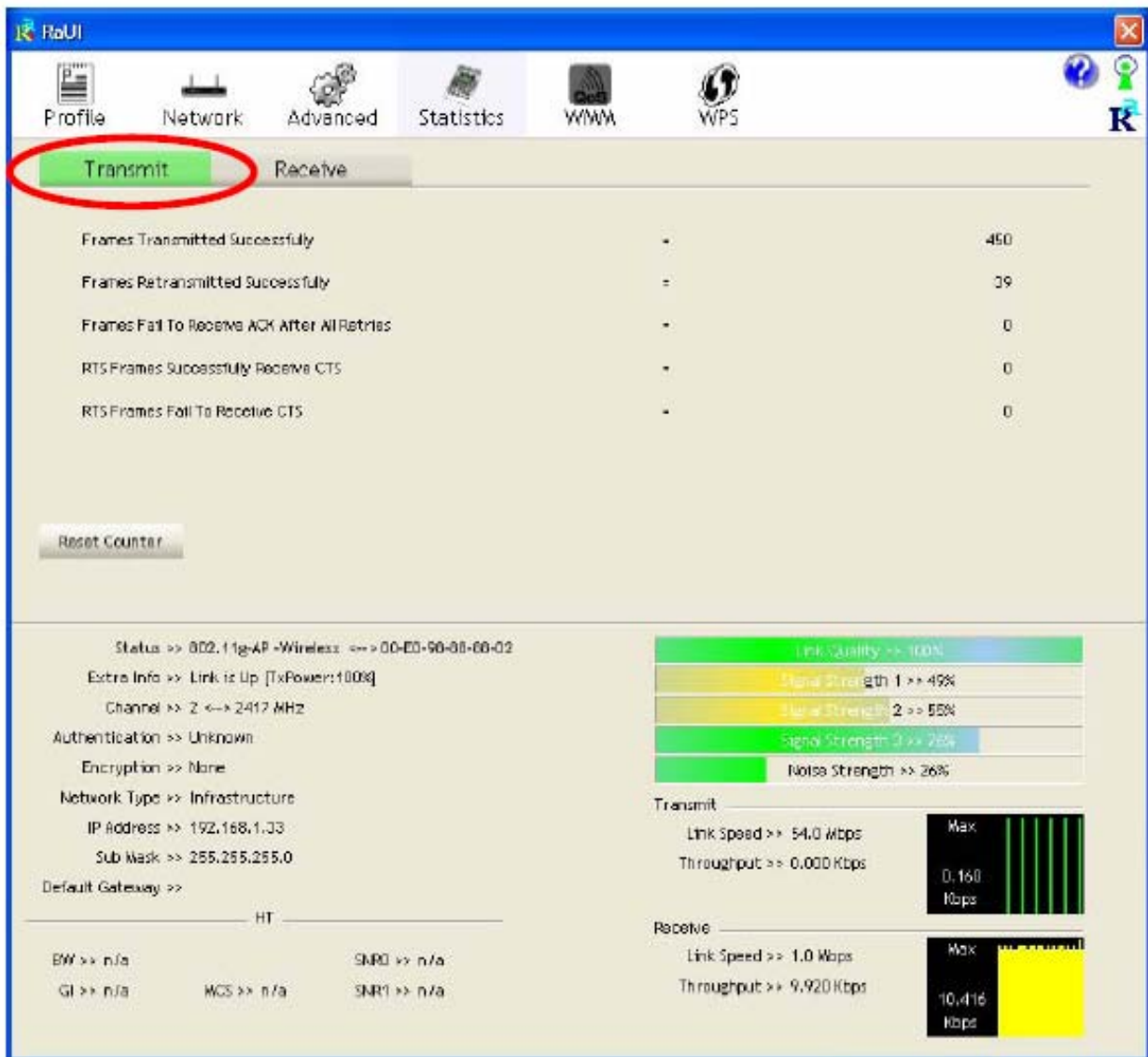
Advanced Tab

Wireless mode	Select wireless mode. There are 802.11b/g/n mixed, 802.11b only and 802.11b/g mixed modes are supported. Default mode is 802.11b/g/n mixed.
Enable Tx Burst	Check to enable the burst mode.
Enable TCP Window Size	Check to increase the transmission quality.
Fast Roaming at	Check to set the roaming interval, fast to roaming, setup by transmits power.
Show	When you connect AP with authentication, choose

Authentication Status Dialog	whether show "Authentication Status Dialog" or not. Authentication Status Dialog displays the process about 802.1x authentications.
Select Your Country Region Code	Select your country region code from the pull-down menu.
Enable CCX (Cisco Compatible extensions)	<p>Check to enable the CCX function.</p> <ul style="list-style-type: none"> • Turn on CCKM • Enable Radio Measurements: Check to enable the Radio measurement function. • Non-Serving Measurements limit: User can set channel measurement every 0~2000 milliseconds. Default is set to 250 milliseconds.
Apply	Click to apply above settings.

Statistics

The Statistics screen displays the statistics on your current network settings.



Transmit	
Frames Transmitted Successfully	Shows information of frames successfully sent.
Frames Retransmitted Successfully	Shows information of frames successfully sent with one or more retries.
Frames Fail To Receive ACK After All Retries	Shows information of frames failed to transmit after hitting retry limit.
RTS Frames Successfully Receive CTS	Shows information of successfully received CTS after sending RTS frame

RTS Frames Fail To Receive CTS	Shows information of failed to receive CTS after sending RTS.
Reset Counter	Click this button to reset counters to zero.

The screenshot shows the RaUI interface with the 'Statistics' tab selected. The 'Receive' sub-tab is highlighted with a red circle. The main statistics table is as follows:

Category	Value
Frames Received Successfully	16
Frames Received With CRC Error	758
Frames Dropped Due To Out-of-Resource	0
Duplicate Frames Received	0

Below the statistics table is a 'Reset Counter' button. The bottom section of the interface shows network status and signal quality:

- Status: 802.11g-AP-Wireless <-> 00-E0-98-88-88-02
- Extra Info: Link Is Up (TxPower:100%)
- Channel: 2 <-> 2417 MHz
- Authentication: Unknown
- Encryption: None
- Network Type: Infrastructure
- IP Address: 192.168.1.33
- Sub Mask: 255.255.255.0
- Default Gateway: HT

Signal Quality Indicators:

- Link Quality: 100%
- Signal Strength 1: 58%
- Signal Strength 2: 58%
- Signal Strength 3: 78%
- Noise Strength: 26%

Transmit Performance:

- Link Speed: 54.0 Mbps
- Throughput: 0.000 Kbps

Receive Performance:

- Link Speed: 1.0 Mbps
- Throughput: 9.424 Kbps

Receive Statistics	
Frames Received Successfully	Shows information of frames Received Successfully.
Frames Received With CRC Error	Shows information of frames received with Error

	CRC error.
Frames Dropped Due To Out-of-Resource	Shows information of frames dropped due to resource issue.
Duplicate Frames Received	Shows information of duplicate received frames.
Reset Counter	Click this button to reset counters to zero.

WMM / QoS

The WMM page shows the Wi-Fi Multi-Media power save function and Direct Link Setup that ensure your wireless network quality.

WMM Setup Status

WMM >> Enabled Power Save >> Disabled Direct Link >> Disabled

WMM Enable

WMM - Power Save Enable

AC_BK AC_BE AC_VI AC_VO

Direct Link Setup Enable

WAC Address >> [][][][][][] Timeout Value >> [60] sec

Apply Tear Down

Status >> 602.11g-AP -Wireless <-> 00-E0-99-00-00-02

Extra Info >> Link is Up [TxPower:100%]

Channel >> 2 <-> 2417 MHz

Authentication >> Unknown

Encryption >> None

Network Type >> Infrastructure

IP Address >> 192.168.1.33

Sub Mask >> 255.255.255.0

Default Gateway >> _____ HT _____

BF >> n/a SNR0 >> n/a

GI >> n/a MCS >> n/a SNR1 >> n/a

Link Quality >> 100%

Signal Strength 1 >> 49%

Signal Strength 2 >> 44%

Signal Strength 3 >> 35%

Noise Strength >> 26%

Transmit

Link Speed >> 54.0 Mbps Max: [Bar Chart]

Throughput >> 0.000 kbps 0.160 kbps

Receive

Link Speed >> 1.0 Mbps Max: [Bar Chart]

Throughput >> 9.920 kbps 9.920 kbps

WMM Enable	Check the box to enable Wi-Fi Multi-Media function.
WMM- Power Save Enable	Select which ACs you want to enable.
Direct Link Setup Enable	Check the box to enable Direct Link Setup.
MAC Address	<p>The setting of DLS indicates as follow :</p> <p>Fill in the blanks of Direct Link with MAC Address of STA, and the STA must conform to two conditions:</p> <ul style="list-style-type: none"> • Connecting with the same AP that supports DLS feature. • DSL enabled.
Timeout Value	Timeout Value represents that it disconnect automatically after few seconds. The value is integer that must be between 0~65535. It represents that it always connects if the value is zero. Default value of Timeout Value is 60 seconds.
Apply	Click this button to apply the settings.
Tear Down	Select a direct link STA, then click "Tear Down" button to disconnect the STA.

WPS

The primary goal of Wi-Fi Protected Setup (Wi-Fi Simple Configuration) is to simplify the security setup and management of Wi-Fi networks. The STA as an Enrollee or external Registrar supports the configuration setup using PIN (Personal Identification Number) configuration method or PBC (Push Button Configuration) method through an internal or external Registrar.

Radio On/Off



Click this icon to turn on radio function.



Click this icon to turn off radio function.

About



Click this button to show the information of the wireless card including, RaConfig Version/ Date, Driver Version/ Date, EEPROM Version, Firmware Version and Phy_Address.

RaUI

Profile Network Advanced Statistics WMM WPS

(c) Copyright 2007, Ralink Technology, Inc. All rights reserved.

RaConfig Version >> 2.0.2.0 Date >> 05-15-2007
 Driver Version >> 1.0.3.0 Date >> 05-07-2007
 EEPROM Version >> 1.1
 Firmware Version >> 0.7
 Phy_Address >> 00-13-0E-00-00-12

WWW.RALINKTECH.COM

Status >> 802.11g-AP-Wireless <-> 00-E0-9B-88-68-02
 Extra Info >> Link is Up [TxPower:100%]
 Channel >> 2 <-> 2417 MHz
 Authentication >> Unknown
 Encryption >> None
 Network Type >> Infrastructure
 IP Address >> 192.168.1.33
 Sub Mask >> 255.255.255.0
 Default Gateway >> HT

BW >> n/a SNR0 >> n/a
 GI >> n/a MCS >> n/a SNR1 >> n/a

Link Quality >> 100%
 Signal Strength 1 >> 45%
 Signal Strength 2 >> 50%
 Signal Strength 3 >> 70%
 Noise Strength >> 26%

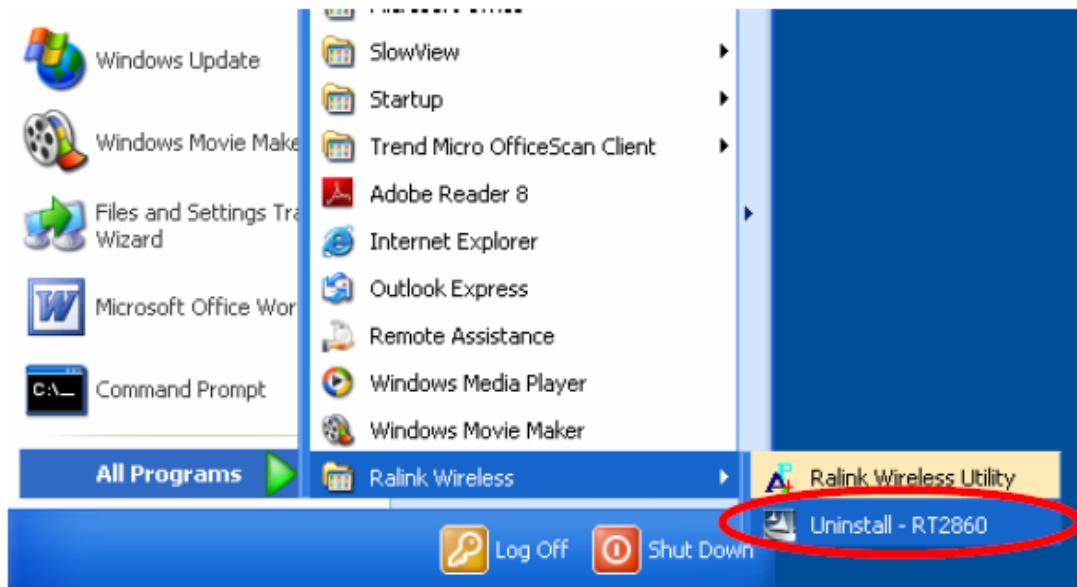
Transmit
 Link Speed >> 54.0 Mbps
 Throughput >> 0.000 Kbps

Receive
 Link Speed >> 1.0 Mbps
 Throughput >> 9.424 Kbps

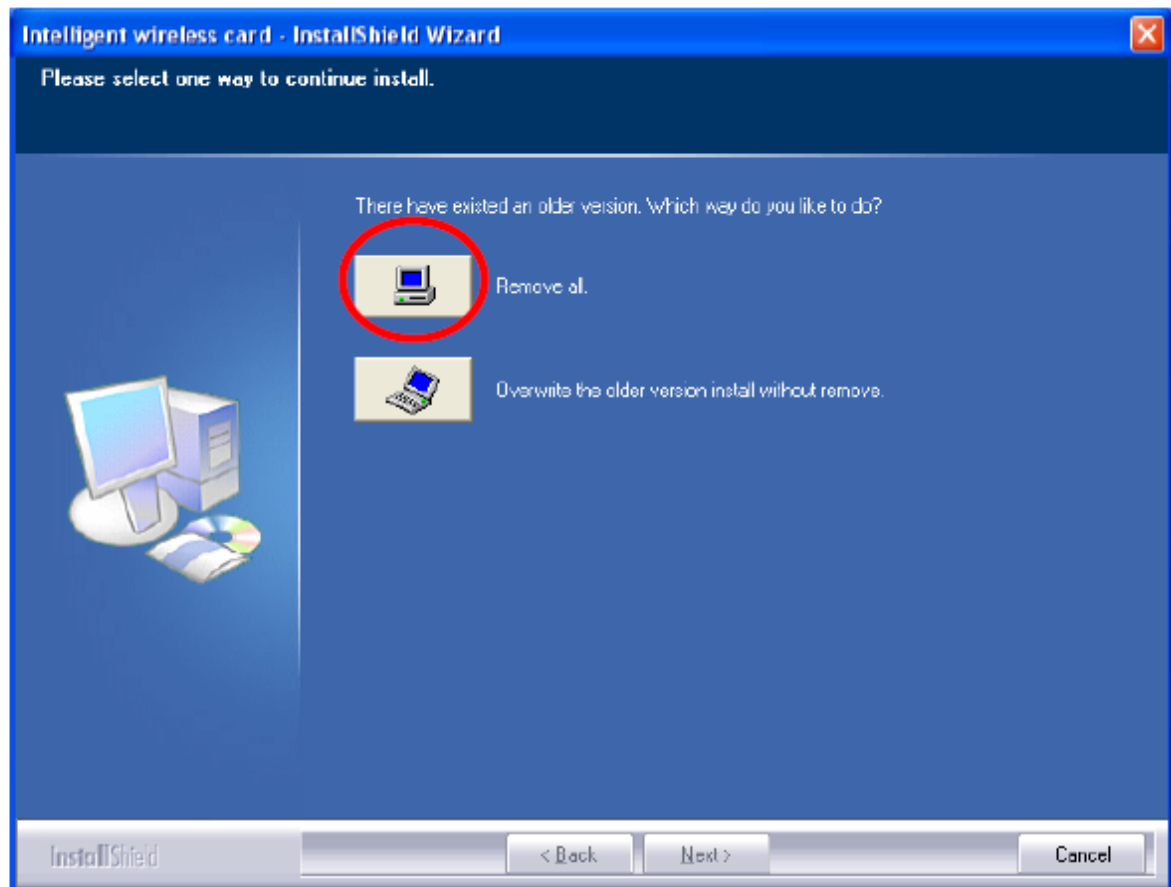
UNINSTALLATION

In case you need to uninstall the utility and driver, please refer to below steps. (As you uninstall the utility, the driver will be uninstalled as well.)

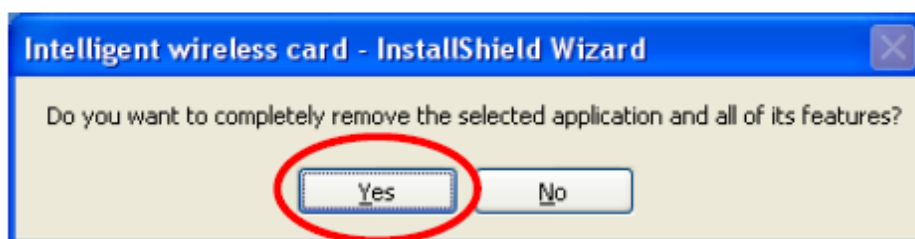
1. Go to **Start → Programs → Ralink Wireless → Uninstall**.



2. Select **Remove all** button and click **Next** to start uninstalling.



3. Click **Yes** to complete remove the selected application and all of its features.



4. Select **“Yes, I want to restart my computer now”** and then click **Finish** to complete the uninstallation.

