

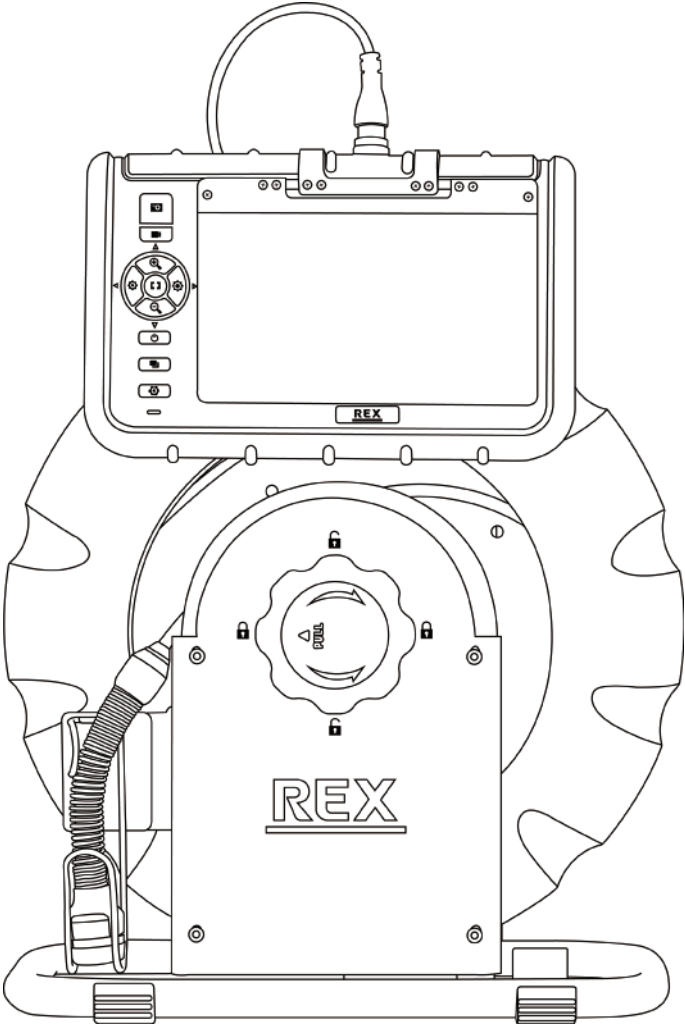


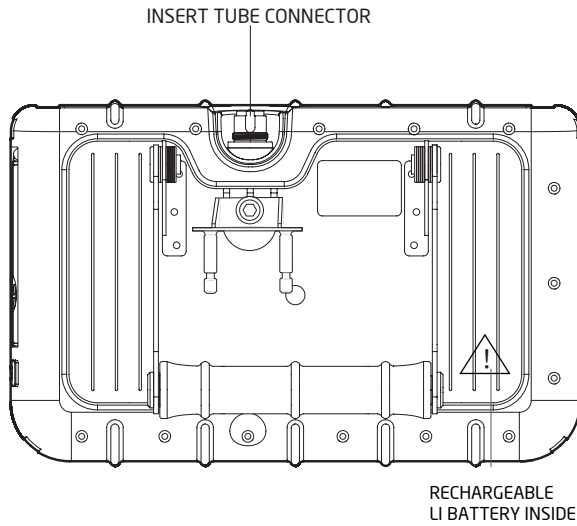
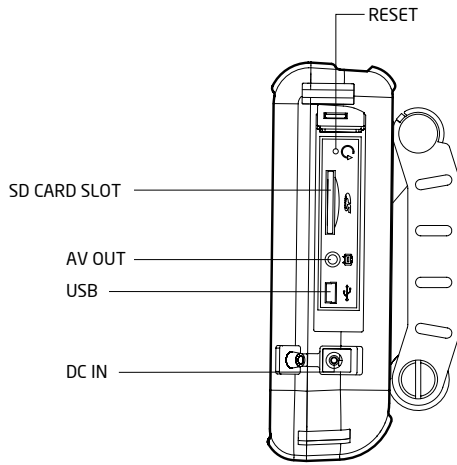
GLS-R3032

[Index]

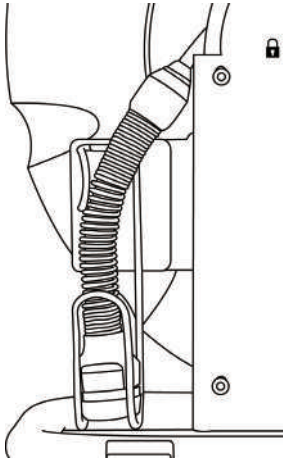
Product outlook	3
1.1 Probe head holder	5
1.2 Reel locker	5
1.3 System console joint	6
Main key function	7
2.1 Main UI	7
2.2 Snapshot	8
2.3 Video Recording	9
2.4 Zoom in / Out	10
2.5 Brightness Control	10
2.6 Full Screen	11
2.7 Album	11
2.8 Album--photo annotation	14
Touch key functions	16
3.1 Reset / Mirror / Compare	16
3.2 Wireless function	17
Main MENU settings	19
4.1 Menu	19
4.2 Info	20
4.3 SD card status	20
4.4 Language	21
4.5 Time setting	21
4.6 Meter display unit	22
4.7 Watermark	22
4.8 Auto power off	23
4.9 AV output	24
4.10 USB output	24
Safety cautions	25
Specifications	27
Accessories	29
Appendix	30

Product Outlook



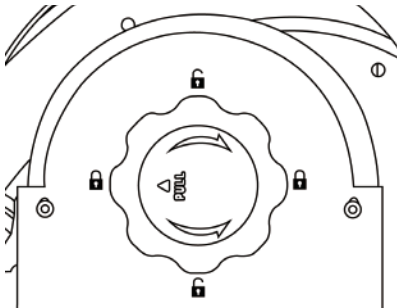


- 1.1 Probe head holder



Put the probe head back to the holder properly every time finish using the equipment for good protection.

- 1.2 Reel locker



Pull and spin the roller to lock/unlock position.

Look ; in case of accidentally reel spin.

- 1.3 System console joint

Horizontal or Vertical usage types for the reel.

The console monitor angle is adjustable by 2 joint axes.



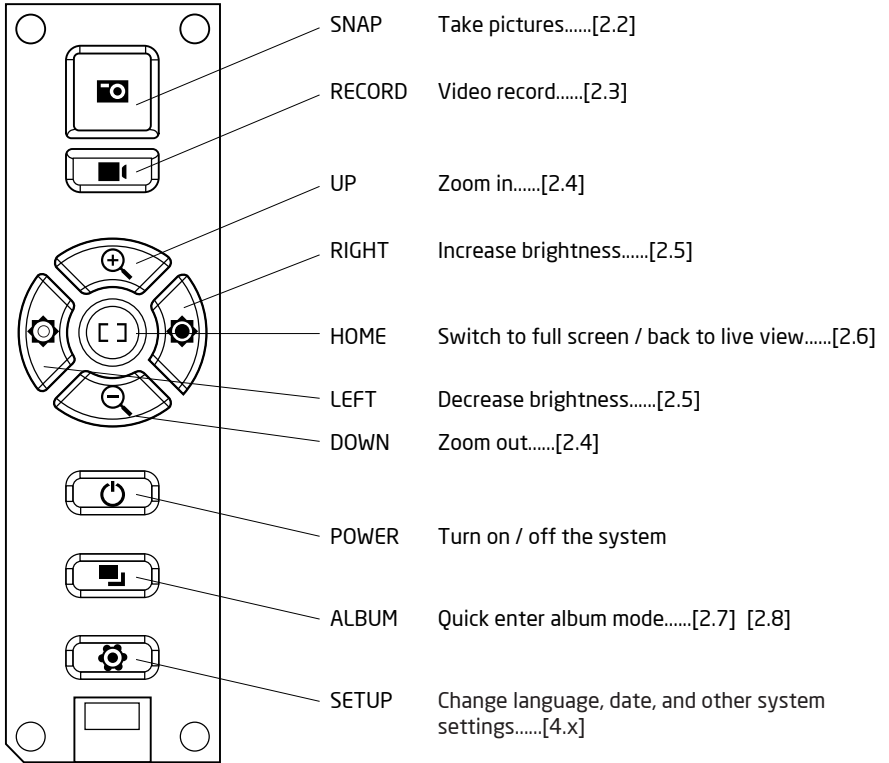
Horizontal



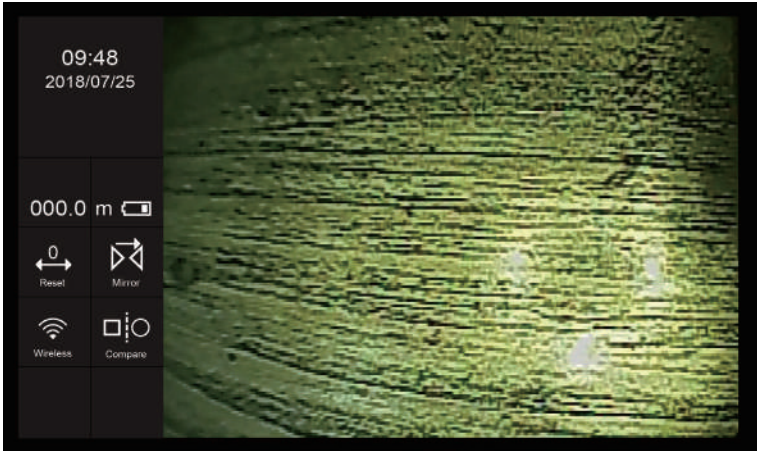
Vertical

Main key function

- 2.1 Main UI
Keypad Button



Live View UI



• 2.2 Snapshot

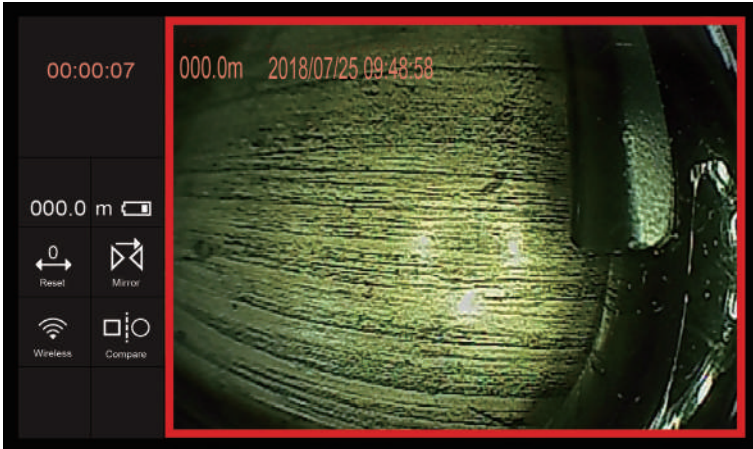
Press the  button



Note : The watermark of time stamp and the length meter can be enable/disable in the setup menu.



• 2.3 Video Recording

Press the  button to start / stop recording video.





Note: The system built-in 5 minutes repeat record function.
Total recording length depends on the SD card status [4.3].
The 5 minutes repeat setting is not configurable.

- **2.4 Zoom in / Out**

Press the  /  button. 5x zoom in adjustment.




- **2.5 Brightness Control**

Press the  /  button. 10 levels adjustment of probe head LED light.



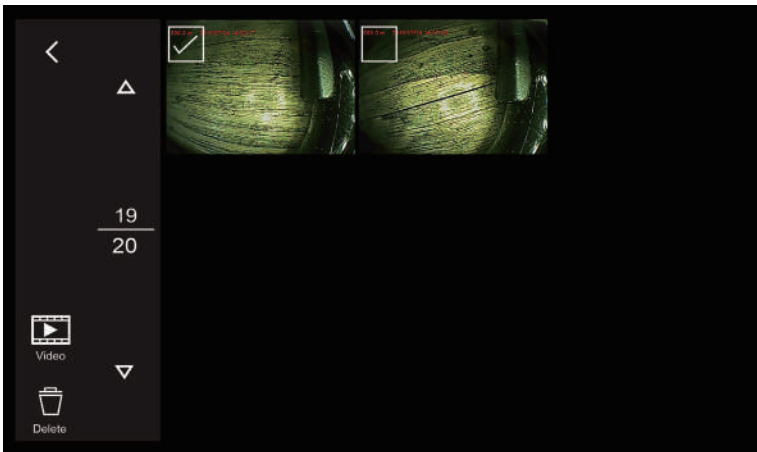
- **2.6 Full Screen**

Press the  button.

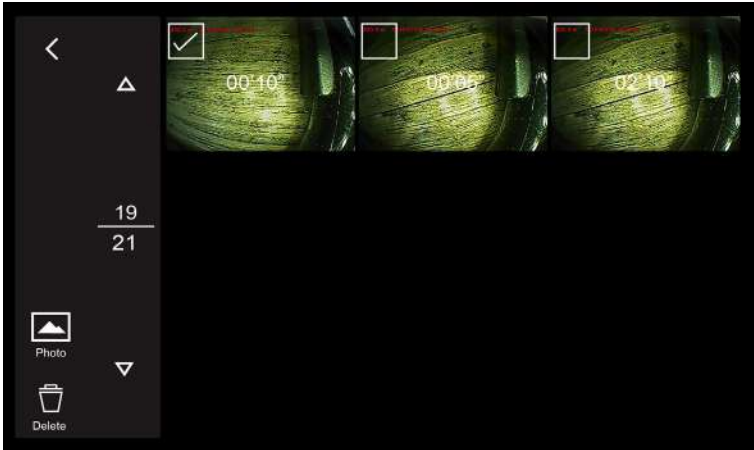





- **2.7 Album**

2.7.1 Photo Gallery : touch  button to view video gallery.




2.7.2 Video Gallery : touch  button to view video gallery.



2.7.3 Single photo view : touch  button to view single video file. The  and  instruction is in next section.



2.7.4 Single video view : touch  button to view single photo file. Touch any position of the screen rto play / pause.



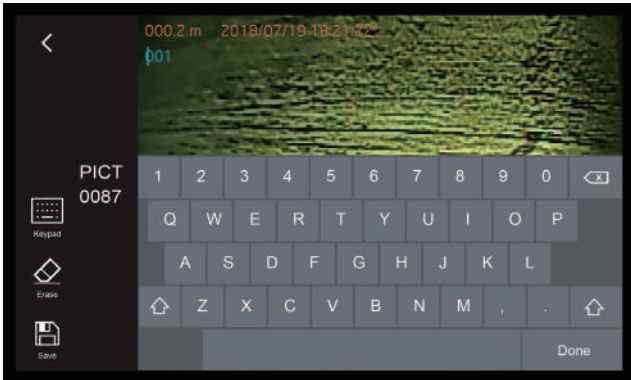
• 2.8 Album--photo annotation :

The system allows user add maximum 10 notes on a photo. Each note can key in maximum 24 characters. The edit steps as follow:

2.8.1 Add one note :



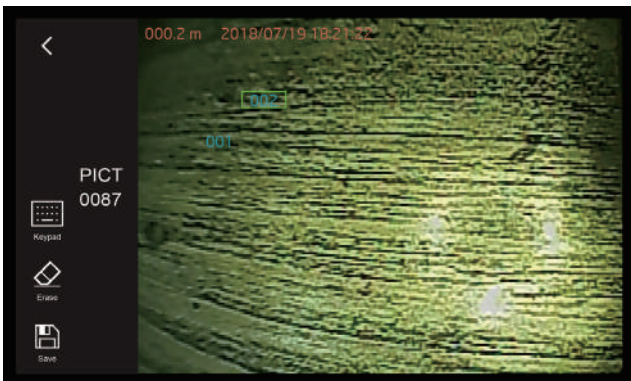
[Add note] ->[key in] ->[Done]. Then a note can be done.



2.8.2 Add more note :




[Keypad] ->[key in] ->[Done].



2.8.3 Move note position :


Touch any note been made on screen then it shows a green frame. The note frame can be dragged to any position you want to mark on the photo.

2.8.4 Erase note :

Touch any note been made on screen then it shows a green frame. Touch the  to delete the note frame.

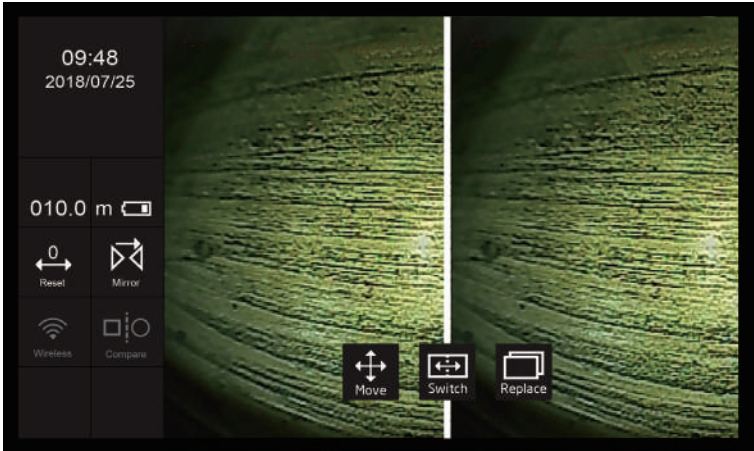
During keying any note, use the  function to erase all characters.

2.8.5 Save :


 Please make sure saving the photo with notes you made. The system creates a new file in the album. The original photo will not be covered.

Touch key functions

• 3.1 Reset/ Mirror/ Compare



3.1.1 Reset :

To get the real length been inserted into the inspection area, use the  function to return the length meter to zero for the pipe been pull out in advance.

3.1.2 Mirror : Mirror the image horizontally.

3.1.3 Compare : Compare the live view with stored image.



To move the compared photo to target position.





To switch the left / right side viewing window].



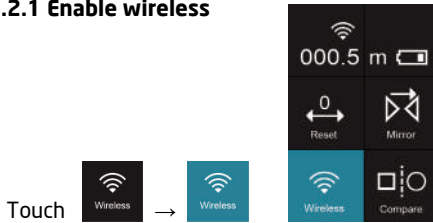
To replace another compared photo.


• Note :

Concerning the necessarily usage of accessing stored images files, the  and  functions will be disable when there is no SD card installed in console.

• 3.2 Wireless function

• 3.2.1 Enable wireless



In a few seconds, the  indicator shows up, then the system is ready to be searched and connected by mobile devices.

3.2.2 Wi-Fi connection with mobile devices

Open your mobile Wi-Fi setting and search the system SSID. The SSID and password can be found in the <MENU> / <info.>.

Connect the system with your mobile device

• Note :

- Typically, the Wi-Fi system will be added to your favorite Wi-Fi network list after first time connecting. The favorite Wi-Fi network will remember the SSID/password.
- The main system allows "1 console to 1 mobile" connection simultaneously. When use a new mobile device to connect the system, please check there is not any existing mobile device enabling Wi-Fi and connect to the system. It may cause the connecting step being rejected then fail.

3.2.3 Live share and access the image of the system :

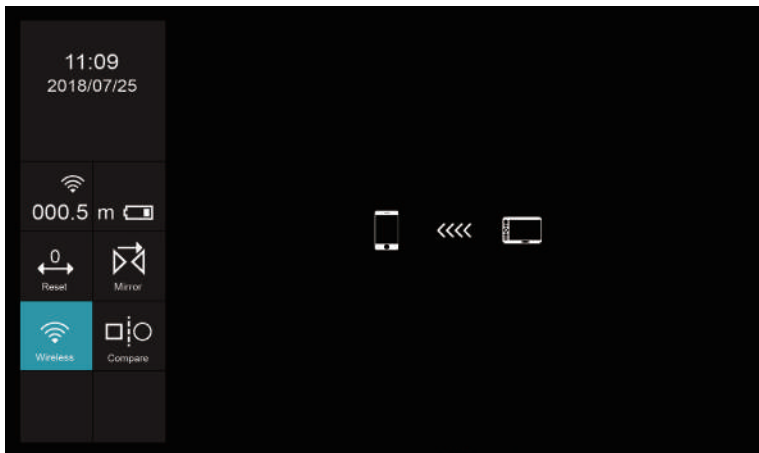
Launch the "VideoscopeNow" APP.

When the system start streaming image to mobile APP, the wireless indicator will turn blue.



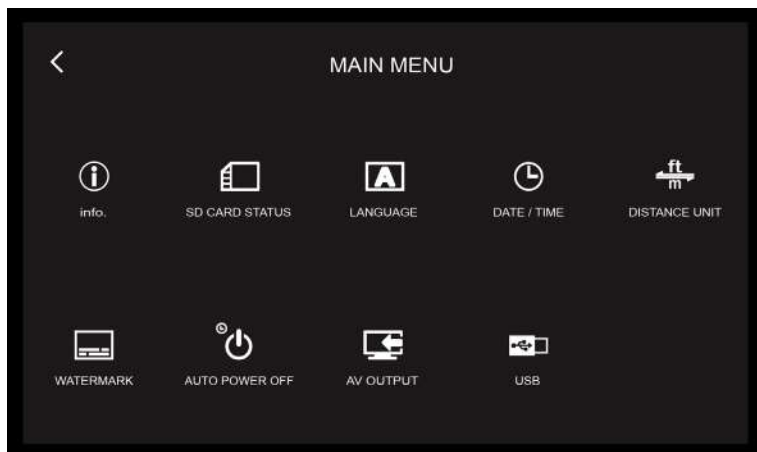
• Note :

- 'VideoscopeNOW' is a tool specifically designed for GLS-R3032 industrial videoscopes that can share the live view from the main portable console system through Wi-Fi connection. It can also act as a remote controller to make the console taking photos or recording videos. In the APP, user can link to the system to access the album and download the photos/videos on the local mobile devices.
- Learn detail instruction by the Appendix-<VideoscopeNow user guide>
- In APP preview / album mode, the main system will shut down the system live view image and main key functions to avoid control operation conflicts and keep data download performance. The monitor show a data transfer status.

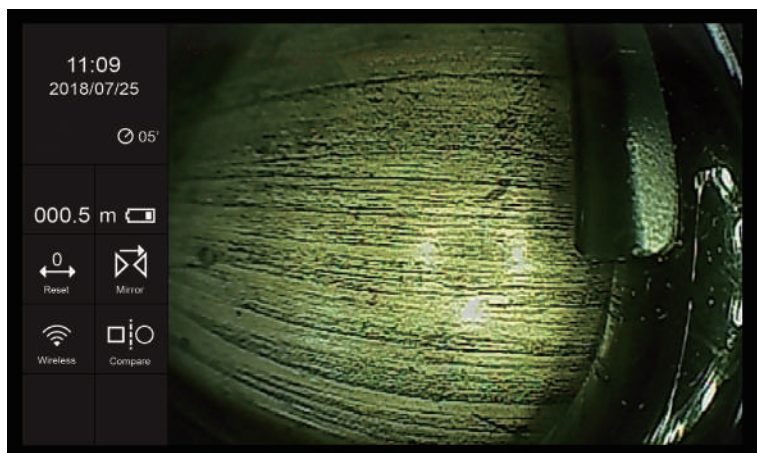


Main MENU settings

• 4.1 Menu



UI display



• **4.2 Info** ⓘ

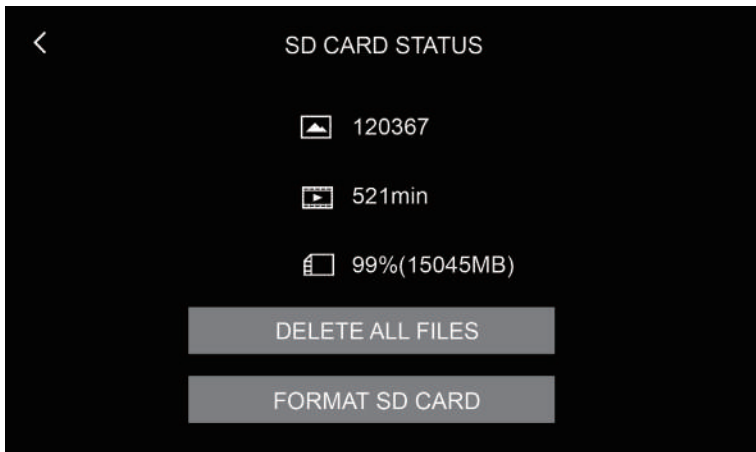
Include firmware information.

-Current version

-Wi-Fi SSID

-Wi-Fi password

• **4.3 SD card status** 📄



• 4.4 Language 



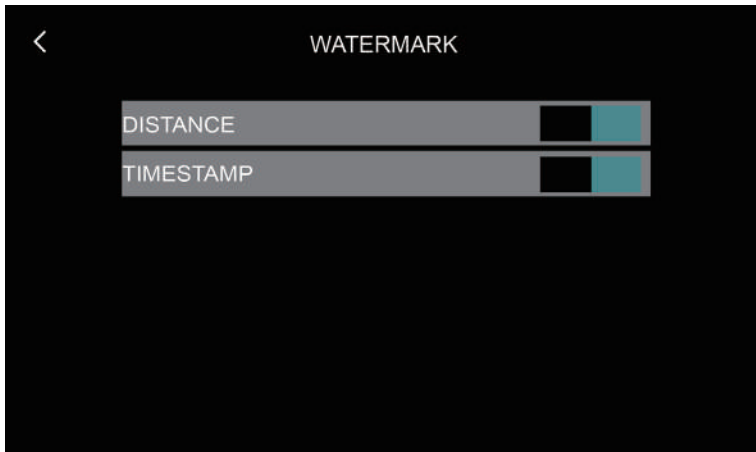
• 4.5 Time setting 



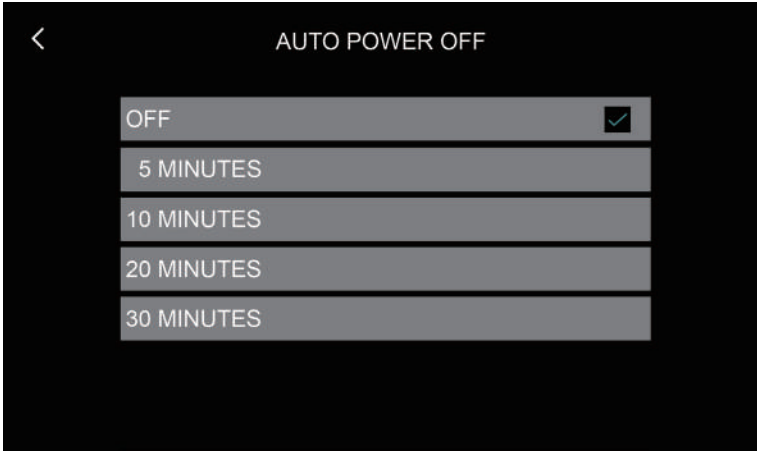
• 4.6 Meter display unit 



• 4.7 Watermark 

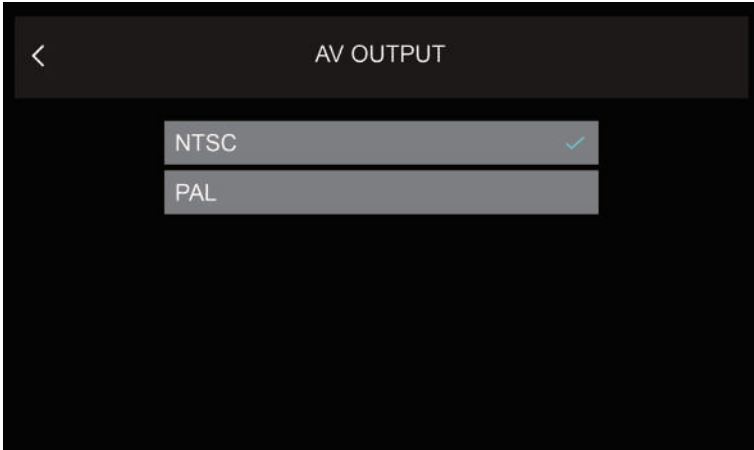


• 4.8 Auto power off 



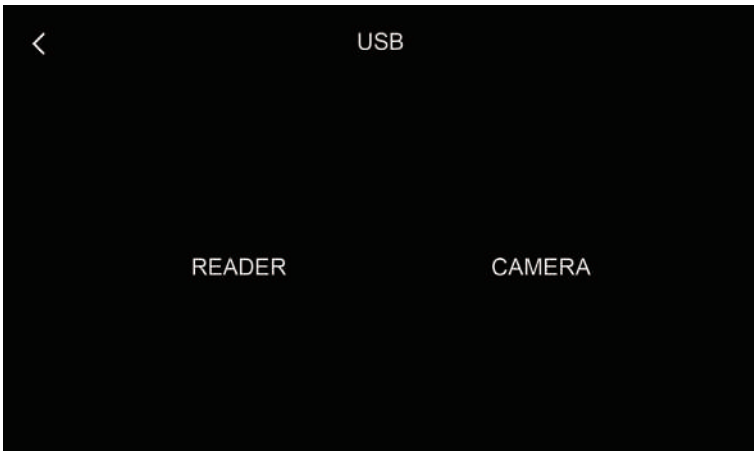
4.9 AV output :

Two options NTSC /PAL are available. System default is NTSC. The image will be output directly once the system is connected to display device by AV-output port.



Note : When using AV-output, the display of the console will be disabled.

• 4.10 USB output



SAFETY CAUTIONS

SAFETY GUIDE

USER MUST PAY ATTENTION TO THE INFORMATION PROVIDED HERE TO ENSURE SAFETY.

We suggest you read the following statements carefully before using the system.

If the equipment is used in a manner not specified by the manufacturer, the protection provided by the equipment may be impaired.



CAUTION BATTERY

- Risk of explosion if battery is replaced by an incorrect type.
- Dispose of used batteries according to the instructions.
- Never replace the battery by yourself.



WARNING If this product is used without observing the information given under this symbol, it might cause injuries or loss of life.

CAUTION

If this product is used without observing the information given under this symbol, it might cause damage to this product.



WARNING HAZARD ENVIRONMENT

- Do not use this system in explosive environments such as gasoline or alcohol storage tank.



WARNING FLAMMABLE GASES

- Do not use this system near flammable gases.



WARNING INDUSTRIAL USAGE ONLY



WARNING INTENSIVE LIGHT MAY CAUSE EYE INJURY

- Avoid looking at the probe head while LED is on.

CAUTION

CERTAIN SUBSTANCES MAY DAMAGE THE PROBE

- Please refer to Chemical resistance below. Contact the store you purchased for unsure chemical solutions for further information.

Chemical Resistance

- Water
- Brake fluid
- Gasoline
- Diesel fuel
- Transmission fluid

CE NOTICE

The Videoscope System is in conformance with the following standards:

- 2014/30/EU Electromagnetic Compatibility Directive
-

RoHS NOTICE

The Videoscope System is in conformance with the requirements of the European law on the Restriction of Hazardous Substances (RoHS) directive. This means that our product is both lead-free and without the hazardous substances either in the manufacturing process or in the final product

FCC NOTICE

NOTE: This equipment has been tested and found to comply with the limits for a Class A digital device, pursuant to part 15 of the FCC Rules. These limits are designed to provide reasonable protection against harmful interference when the equipment is operated in a commercial environment. This equipment generates, uses, and can radiate radio frequency energy and, if not installed and used in accordance with the instruction manual, may cause harmful interference to radio communications. Operation of this equipment in a residential area is likely to cause harmful interference in which case the user will be required to correct the interference at his own expense.

(Sec. 15.247)

This device complies with FCC radiation exposure limits set forth for an uncontrolled environment. End users must follow the specific operating instructions for satisfying RF exposure compliance. This transmitter must not be co-located or operating in conjunction with any other antenna or transmitter

(Sec. 15.19)

This device complies with part 15 of the FCC Rules. Operation is subject to the following two conditions:

- (1) This device may not cause harmful interference, and
- (2) this device must accept any interference received, including interference that may cause undesired operation

(Sec. 15.21)

Changes or modifications not expressly approved by the party responsible for compliance could void the user's authority to operate the equipment.

FCC Radiation Exposure Statement:

This equipment complies with FCC radiation exposure limits set forth for an uncontrolled environment. This equipment should be installed and operated with minimum distance 20cm between the radiator & your body.

SPECIFICATIONS

Main System

Features	Description
LCD	7" LCD (800 x 480)
Snapshot	640 x 480, .JPEG
Recording	640 x 480, .MOV, 30 fps
Dimension	240 x 154 x 47mm
Weight	1.3 kg (2.86 lb)
Water proof	IP57
Drop resistance	1m
Power Supply	Rechargeable Li battery, approx. 3.5 hours charging/ operating AC power: 100-240V, 5V, 3A
Charging temperature	10°C~40°C
Working temperature	0°C~45°C (with battery) 0°C~40°C (with AC power adaptor)
Storage temperature	0°C ~ 60°C
USB	Mass storage mode / Webcam mode
Storage	SD card, up to 32G
AV output	NTSC-PAL
Audio input	Built-in microphone
Brightness Adjust	10 levels Adjustment
WLAN	802.11.bgn

Pipe

Camera head	
Resolution	640*480
Camera FOV	150°
Camera DOF	3cm ~ ∞
Tip view	30mm
Tip material	Front view. Horizontal self- leveling
Water proof	Stainless steel
Light source	Front LEDs
Waterproof	Under water 10m for 30 minutes
Working temperature	-10°C ~ 60°C
Storage temperature	-10°C ~ 60°C
Reel	
Diameter	34*22*42cm
Tube reel dimension	330mm
Material	Steel frame. HDPE cable reel Aluminum front cover plate
Probe	
Cable diameter	ø6.6mm
Length	32m

ACCESSORIES



50mm metal ring
(Optional)



100mm brush
(Optional)



150mm brush
(Optional)



Carry case



Reel carry belt



DC Charger /
1M AV-out cable



16GB SD card

[APPENDIX] VideoscopeNow- App User Guide

1. Description

"VideoscopeNOW" is a tool for GLS-R3032 industrial videoscope system. It can share the live view from the main system through Wi-Fi connection. It can also act as a remote controller to make the console taking photos or recording clips. In the APP, user can link to the system to access the album and download the photos/clips on the local mobile devices

Note: OS Support- iOS 9 above. Android 4.x above.

Note: Android and iOS may have different interface. The demo pictures of user guider provide basic references.

2. Connection mobile to main system

- 2.1 Install the "VideoscopeNow" APP on the from Android Google Play or Apple APP Store.



Note: Google Play and the Google Play logo are trademarks of Google LLC. Apple, App Store is a trademark and service mark of Apple Inc.

- 2.2 Connect main system to mobile device..

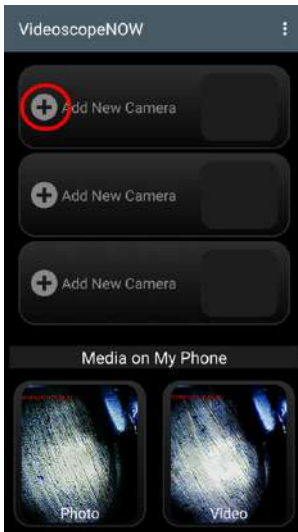


Note: The 'SSID' and 'password' can be found in the main system: <MAIN MENU> / <info.>

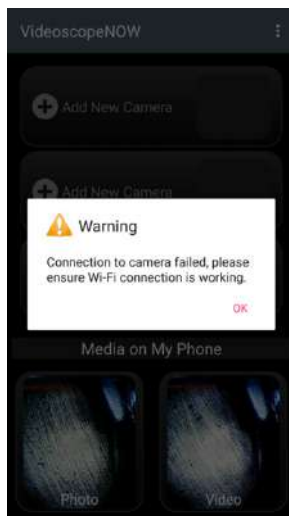
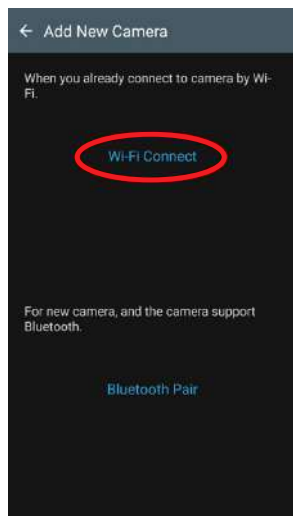
- 2.3 Launch the "VideoscopeNow" APP



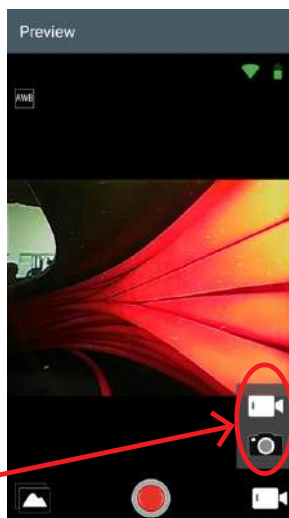
- 2.4 "Add new camera" when first time connection



- 2.5 Choose "Wi-Fi Connect". The warning window shows if the the connection is not properly done. Please check step-2.2 again



- 2.6 When step 2.5 is done, the APP shows up the preview (live view). Record mode is default. You can switch record mode to snapshot mode by touch the icon.



3. Preview Interface - Android



[3.1] Record mode & Snapshot mode:

The two functions work as remote controller to start/stop the main system record video or take photos. The photo and video clip files will be saved in the SD card of the console, not on the mobile phone.

[3.2] Live share SD card image file:

- [3.2.1] Photo viewer.
- [3.2.2] Video viewer.

[3.3] Signal strength indicator:

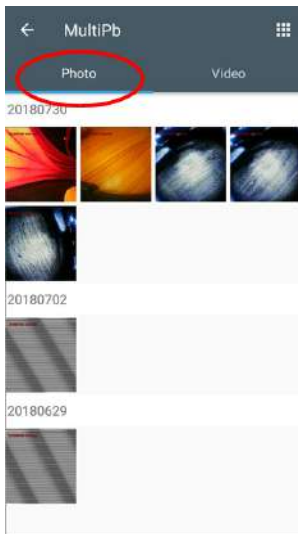
The Wi-Fi signal strength. Typical transmit distance can be 10m. It depends from the environment between the system and mobile device.

[3.4] Power indicator:

3 levels power indicator. It reminds user the power condition of the main system.

- 3.2.1 Photo viewer

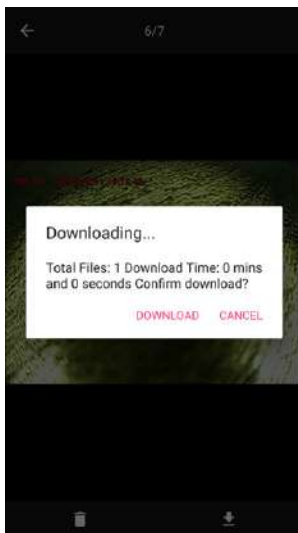
Photo album



Back to album

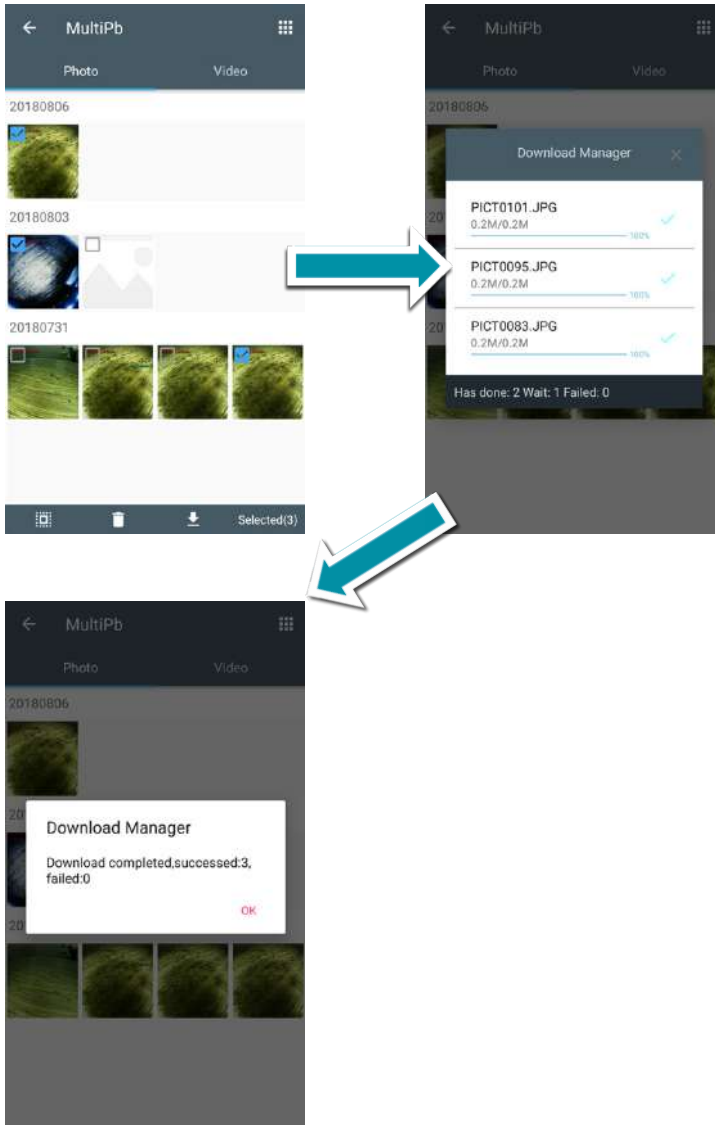


- Download single photo

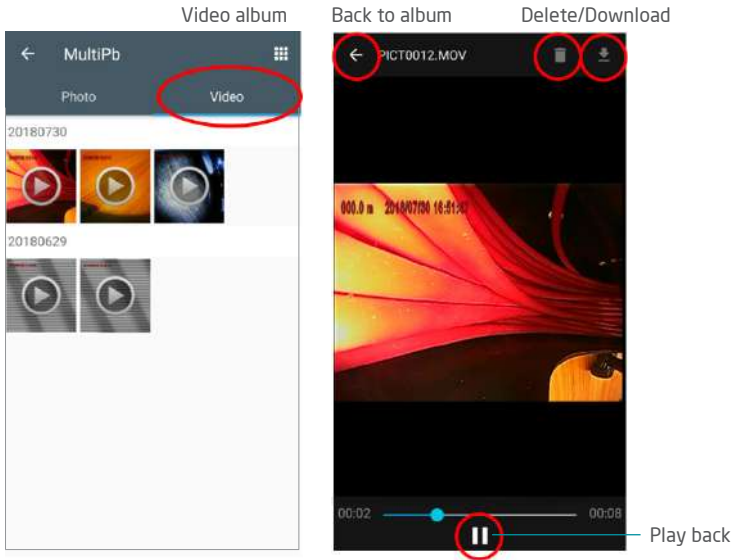


- Download multiple photos

Press and hold any image picture and select the pictures you need by check box. The 'Download manager' feedback the status.

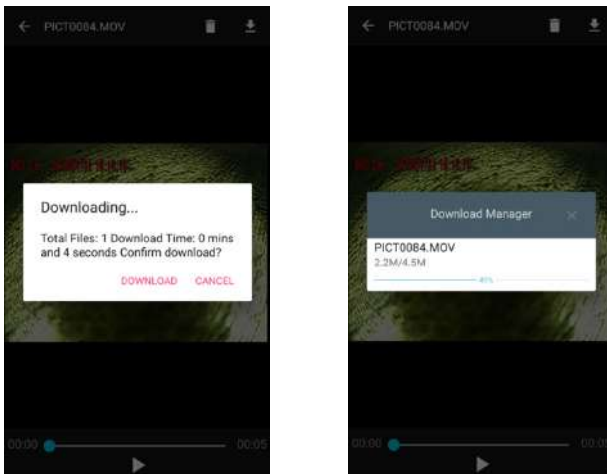


- 3.2.2 Video viewer



- Download videos

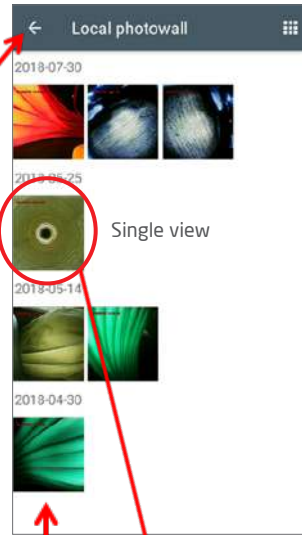
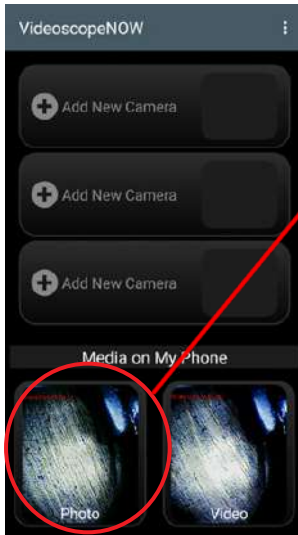
Videos just can be downloaded under finishing playback and stop status. You can drag the cursor to the end then do the download. In pause status, the APP keep receiving buffer image data and the download operation will cause APP shut down



4. Media on my phone - Android

It is a viewer to play back the photos or videos been downloaded on mobile phone.

• 4.1 Photo wall



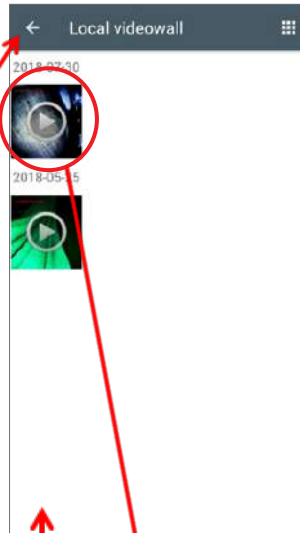
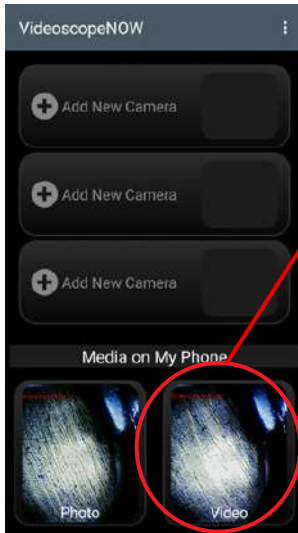
Back to album



Note:

When the APP is installed, a "VideoscopeNow" folder will be created in mobile album list. You can find the images been saved by the original mobile album.

• 4.2 Video Library



Back to ← PICT0013.MOV Delete file



Single play back

5. Preview interface-iOS



5.1 Record mode & Snapshot mode switch:

The two functions work as remote controller to start/stop the main system record video or take photos. The photo and video clip files will be saved in the SD card of the console, not on the mobile phone.

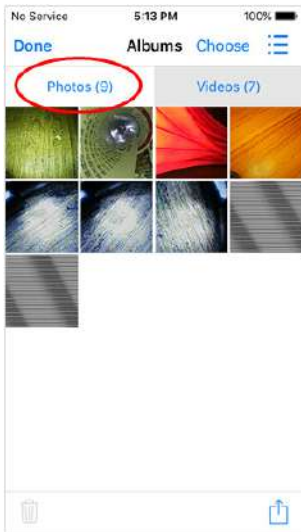


5.2 Live share SD card image file:

- 5.2.1 Photo viewer.
- 5.2.2 Video viewer.

- 5.2.1 Photo viewer

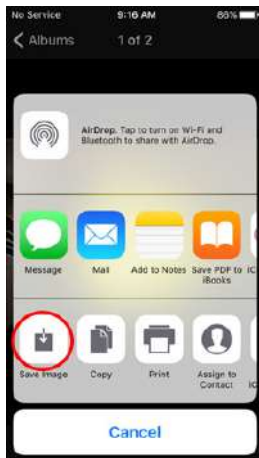
Photo album



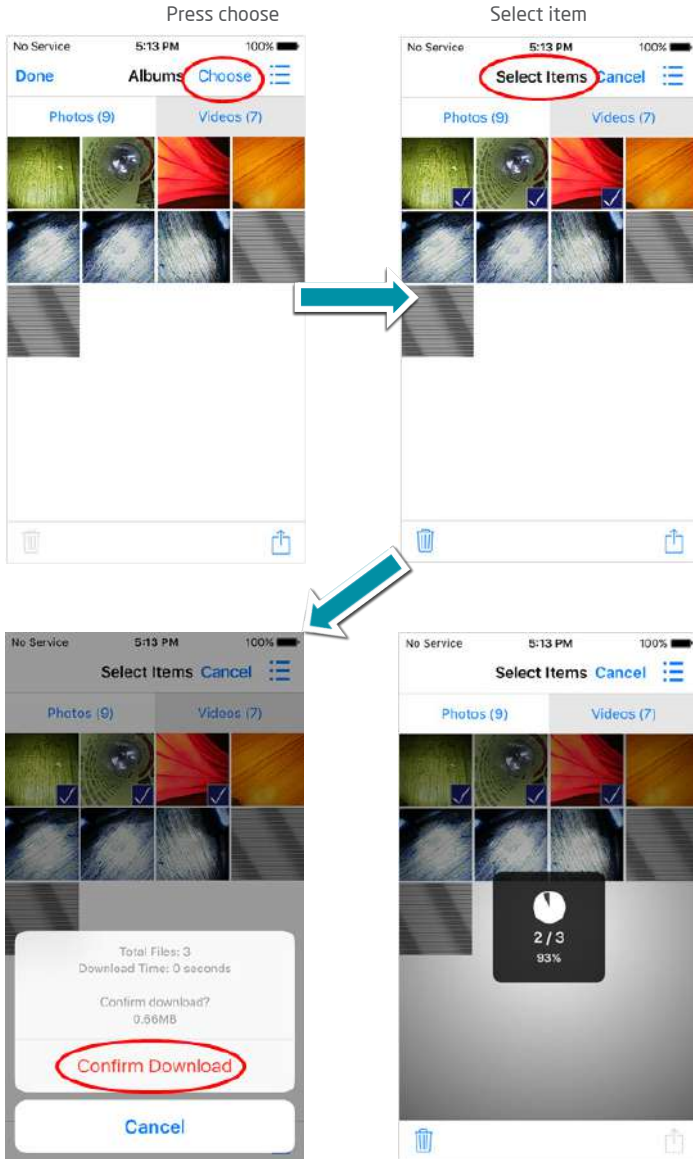
Single play back

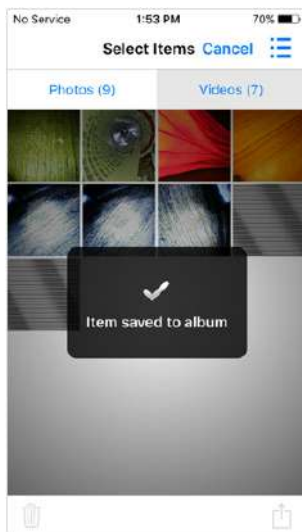
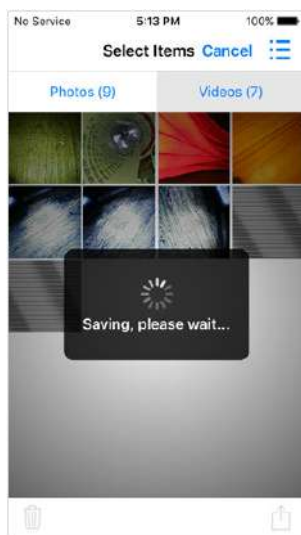
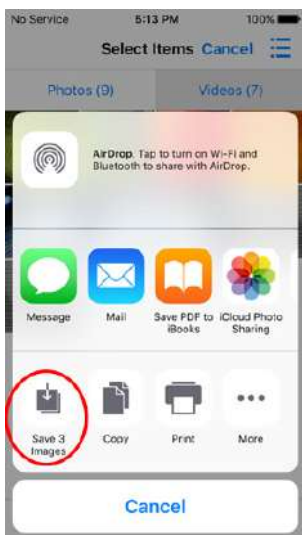


- Download single photo



- Download mutiple photos





- 5.2.2 Video Viewer

Video album



Single play back

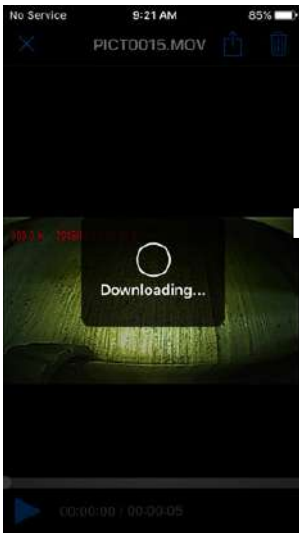
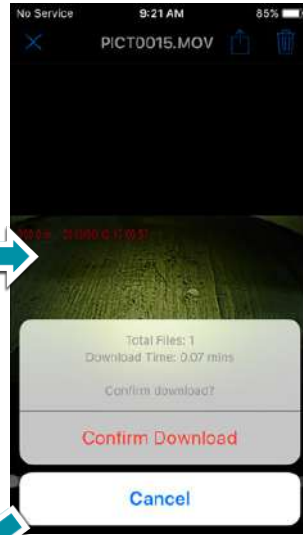


- Download videos

Note :

Videos can be downloaded only when finishing playback and stop status.

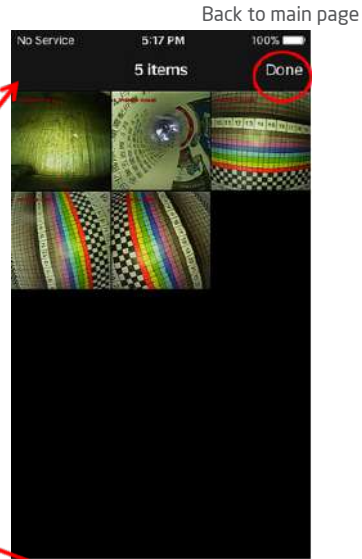
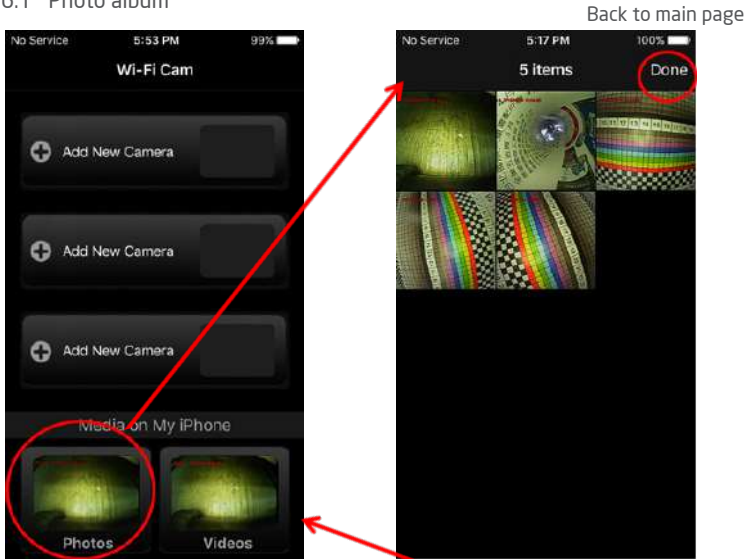
You can drag the cursor to the end and download. In pause status, the APP keep receiving buffer image data and the download operation will cause APP shut down.



6. Media on my phone : IOS

It is a viewer to play back the photos or videos been downloaded on mobile phone.

- 6.1 Photo album



Note:

When the APP is installed, a "VideoscopeNow" folder will be created in mobile album list.

You can find the images been saved by the original mobile album.

Back to album

- 6.2 Video album

