



USER GUIDE AND WARRANTY INFORMATION

FCC ID:2AB5T-HX-P740

HX-P740

## JAM STORM LANGUAGE SELECTOR PIN

Below you will find a Language Selector Pin (LSP), which you can use to toggle through featured languages on your Jam Storm.

1. Once the speaker is on, turn it over.
2. Place the LSP in the language pin hole and toggle through until you reach your desired language or tone.

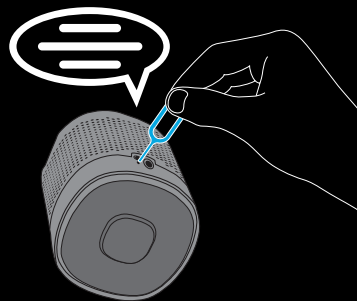
Note: The languages are loaded in the following order: English, Spanish, French, Portuguese, Tone, and back to English.

## VOICE PROMPTS

The voice prompts will walk you through your speaker's status, telling you when it is: Powering on, ready to pair, paired, at maximum volume, incoming call, ignoring a call, ending a call, charging and powering off.

If you'd rather hear tones, simply use the included Language Selector Pin to toggle to the tone option.

Please visit  
[www.jamaudio.com](http://www.jamaudio.com)  
to explore translations  
in your language.



## HEY. HAVE WE SEEN YOU HERE BEFORE?

**Register your speaker at [www.jamaudio.com](http://www.jamaudio.com).**

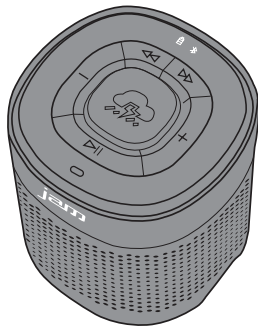
Information about where you bought it and how you're using it is like gold for the people who make these speakers. Do them a solid, will ya?

**Por manual de instrucciones e información de garantía en español visítenos en [www.jamaudio.com](http://www.jamaudio.com)**

There are lots of cool Jam speakers.

Check them all out at [www.jamaudio.com](http://www.jamaudio.com)

## PACKAGE CONTENTS



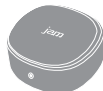
Speaker



User  
Manual



Adaptor  
Cord



Adaptor



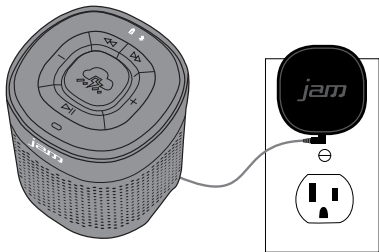
Language  
Selector Pin



Protective  
Cap

## JUST CHARGE IT

Charging the speaker is so easy you've probably figured it out by now, but just in case, use the wall outlet.



1. The cord that came with the speaker—just plug it into the adaptor.

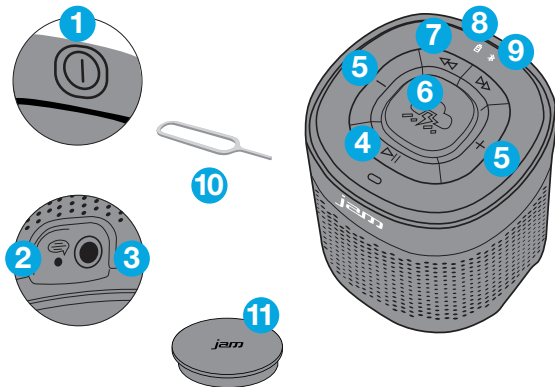
Plug it in and your speaker will be ready for an epic night in no time. You should go get ready too! It needs about 5 hours for 12 hours of party time.

## CONTROL YOUR DESTINY...OR AT LEAST YOUR SPEAKER


---

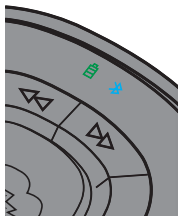
1. This is the power button, press and hold for 5 seconds to power on.
2. It speaks too. Toggle between languages here.
3. The power cord goes here.
4. Push it to play, push it again to pause.
5. Turn the music up or down (Wait, why do you need to turn it down?)
6. Storm button.
7. Skip back a track or jam on to the next song.
8. Check out how much juice is in the battery.
9. This light lets you know when Bluetooth is paired with your speaker.
10. Language Selector Pin.
11. Protective cap.

## FEATURES:



## ALLOW US TO SHED SOME LIGHT

	What It Looks Like	What It Means
CHARGE	Flashing WHITE	Low Battery
	WHITE (when plugged in)	Charging
	OFF (when plugged in)	Ready to Party
	Quickly Flashing WHITE	Pairing Mode
	Slowly Flashing WHITE	Connected



## BLUETOOTH® CONNECTION: IT'S A SETUP

Like any amazing couple, this one starts with a connection—one between your device and the speaker's Bluetooth.

1. We know you're probably going to think, "derp" with this one, but we have to say it: Make sure the smartphone, tablet or computer you want to hook up to the speaker has Bluetooth. (There. We got that out of the way.)
2. Turn on the speaker and look for the little blinking light.
3. Do whatever your device needs you to do on its end. (We don't know what you're using. We're not spies.)
4. Look for Jam Storm in your device's Bluetooth list or click YES—whatever pops up on your device—and BAM! you're connected.
5. Now hit PLAY on your speaker and crank it up—or down if you're lame.

You're probably only going to have to do this once, unless your device goes through a major I-just-dropped-it-in-the-pool kind of reboot. The device and Bluetooth will find each other every time just as long as the speaker is set to Bluetooth and your device's Bluetooth is, you know—on.

If you're connecting to a computer, you may have some extra steps on that end. You'll have to get that information from the computer company.

Depending on your device you may be prompted to enter a pairing code. If prompted enter **"0000"** as the code.

Press and hold the PLAY/PAUSE button for 5 seconds to activate pairing mode.

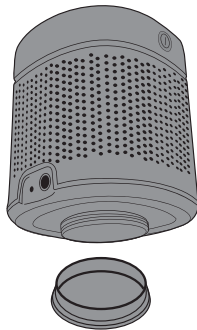
**Note:** If you turn on your Storm but haven't started the party, it will automatically power off after 2 minutes of unpaired inactivity.

## BRING THE STORM, BRING THE THUNDER

---

Have a playlist that needs a little—scratch that—a lot of extra bass? Hit the Storm button for a sound so deep you feel the boom in your body.

Note: To keep Storm base tacky and dirt-free, gently wipe with a damp towel. When not in use, place the included protective cap back on the Storm base.



## HELLO? SPEAKERPHONE? YES!

When friends call asking to join the party—and you know they will—answer the phone without disconnecting from your JAM Storm. Yes, that's right. Your speaker is a speakerphone too. How amazing is that?

1. Make sure your phone and speaker are connected through Bluetooth.
2. Answering and ending a call works the same way: simply click the PLAY/PAUSE button on your Storm.
3. If you'd rather not talk, hold down the PLAY/PAUSE button on your Storm for three seconds to ignore the call.

**THE COOLEST PART:** The Storm knows when a call is coming in and pauses the music before ringing. When you hang up, the music starts where it left off—and so does the party. If it's you making the call, just start dialing from your phone, and the Storm automatically does its hands-free thing. Isn't it refreshing to know your speaker totally gets you?

## THE VOICE FROM WITHIN

When your Jam Storm isn't rocking out, it can tell you all sorts of things it's doing: when it's powering on, ready to pair, paired, at maximum volume, incoming call, ignoring a call, ending a call, charging and powering off.

Just like the global gadget it is, your speaker toggles between several languages or no language at all. Your speaker can parlay with you in English, Spanish, French, or Portuguese. But, making the change is as simple as poking the included Language Selector Pin into the small hole on the bottom. Toggle through until the speaker starts speaking your language.



## COMING CLEAN

---

A soft, dry towel is all you need to clean off your speaker. Using water, harsh cleaners or anything else only starts messing with the mechanics inside. So, yeah, don't do it.

## STUFF THE GOVERNMENT MAKES US SAY

---

### **FCC DISCLAIMER:**

**Note:** This device complies with part 15 of the FCC Rules. Operation is subject to the following two conditions: (1) This device may not cause harmful interference, and (2) this device must accept any interference received, including interference that may cause undesired operation.

## ONE YEAR LIMITED WARRANTY

---

**Note:** Changes or modifications to this unit not expressly approved by the party responsible for compliance could void the user's authority to operate the equipment.

For detailed Warranty Instructions and Information visit:

**<http://www.jamaudio.com/customer-support/warranty-1yr>**

To obtain warranty service on your Jam product, contact a Consumer Relations Representative at 1-888-802-0040 or email [cservice@jamaudio.com](mailto:cservice@jamaudio.com) for assistance. Please have the model number of the product available. Representatives are available 8:30am - 7:00pm EST Monday-Friday.

## STUFF OUR LAWYERS MAKE US SAY

---

### **IMPORTANT SAFEGUARDS:**

When using an electrical product, basic precautions should always be followed, including the following:

### **READ ALL INSTRUCTIONS BEFORE USING**

- **WARNING:** Do not place speakers too close to ears. May cause damage to ear drums, especially in young children.
- Use this product only for its intended use as described in this manual. Do not use attachments not recommended by HMDX.
- HMDX is not liable for any damage caused to Smartphones, iPod/MP3 player or any other device.
- Do not place or store this product where it can fall or be dropped into a tub or sink.
- Do not place or drop into water or any other liquid.
- Not for use by children. **THIS IS NOT A TOY.**
- Never operate this product if it has a damaged cord, plug, cable or housing.
- Keep away from heated surfaces.
- Only set on dry surfaces. Do not place on surface wet from water or cleaning solvents.

## A MESSAGE FROM THE ENVIRONMENT

---

### **WARNING:**

This product has an internal, non-replaceable lithium battery. Please dispose in accordance with your local state, province and country guidelines.

This product contains small parts that may present a choking hazard for young children.

### **CAUTION:**

All servicing of this product must be performed by authorized Jam Audio Service Personnel only

Por manual de instrucciones e Información de garantía en español visítenos en [www.jamaudio.com](http://www.jamaudio.com)

**Where There's A Jam, There's A Party!<sup>™</sup>**