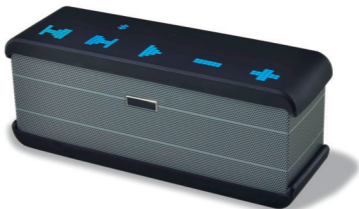


User's Guide



Bluetooth Speaker

Brand name:cowin

Model name:iChocolate mini II

FCC ID:2AB5TICHOCLATE

CE ROHS



Contents

1. Introduction	2
2. Battery Precautions	3
3. Getting Started	4
4. Cable Connection	4
5. Bluetooth Connection	5
6. Microphone Usage	6
7. Charging And LED Indicator Light	6
8. Product Care	7

Please read the following safety warnings and precautions before using your device.

Specification

iChocolate mini II

S/N: >70dB

Frequency range: 80Hz-18KHz

Power supply: Lithium battery or USB cable

Audio source: iPhone, iPad, Smartphone, PC, Notebook, MP3, MP4, etc

Function spec: Bluetooth, Microphone, Line-in, Power Bank, Voice guidance

Size: 187.0mm x 59.0mm x 74.1mm

Rechargeable battery with charging option from USB cable

Operating range up to 20 meters

1. Introduction

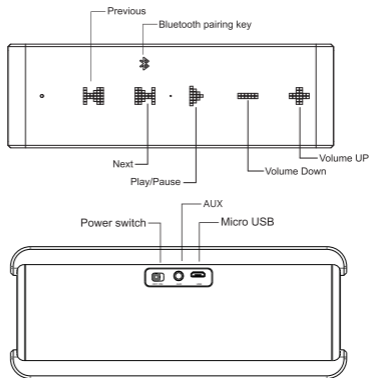
Thank you for purchasing iChocolate mini II. An innovative speaker and with built-in amplifier. This device can be easily connected with audio or video devices for your daily needs. The iChocolate mini II speaker supports both Bluetooth and Aux-in function.

2. Battery Precautions ---

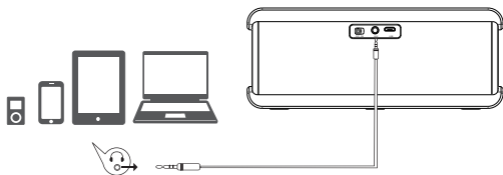
The device can be powered by a built-in rechargeable li-ion battery. Please charge the battery at least 8 hours before your first use of device.

- If the device is not used for a long period of time, the battery may be out of power, please charge the battery.
- Rechargeable batteries are only to be charged under adult supervision.
- Use only the supplied USB cable to recharge the battery. Improper charging may damage the battery and the device.
- Do not attempt to open the rechargeable battery or battery pack. There are no serviceable parts inside.
- Should a battery leak, the device may become damaged. Clean the battery compartment immediately, avoiding touching your skin.
- Keep the battery out of reach of children. If swallowed, consult a physician immediately.
- Avoid storing the battery in extremely hot or cold environment. A device with a hot or cold battery may not work temporarily, even when the battery is fully charged.
- Do not dispose batteries in a fire as they may explode. Batteries may also explode if damaged. Please dispose them according to local regulation. Do not dispose them as household waste.

3. Getting Started



4. Cable Connection



5. Bluetooth Connection

Pairing iChocolate mini II to your smartphone (should be within 20 meters of your speaker)

1. Activate pairing mode on iChocolate mini II by switching “ON/OFF” button to “ON”. then you will hear one “dudu” sound. At this moment, the device is in pairing mode and can be searched.
2. Navigate to the Bluetooth function (refer to the tablet owner’s manual to locate Bluetooth function).
3. Select “Set Up” Bluetooth or turn “ON” Bluetooth.
4. Select “Search” or “Discover” devices.
5. Select “iChocolate mini II”.
6. If requested, type the password or PIN 0000
7. Press the enter key.

After completing the steps above, a message on your smartphone will appear confirming that your device is now paired/connected. Then you will see the blue LED light stay solid, which means that this speaker pairs with your smartphone successfully.

In case of unsuccessful pairing, push this speaker to “OFF” and restart it to “ON”.

If you turn off the speaker, but the Bluetooth on your smartphone remains open, when you restart it, the Bluetooth will be connected automatically.

Remarks: When your smartphone and this speaker are apart beyond bluetooth receiving range, after 10 minutes, this speaker will disconnect with your smartphone and turn into pairing mode. If within 10 minutes your smartphone is back, will connect with this speaker automatically.

6. Microphone Usage

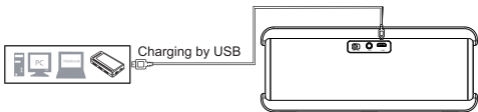
When a phone call comes in, you could talk through the microphone on speaker.

Tips:

When you make a call from your mobile phone the call will (subject to phone settings) automatically transfer to your speaker.

7. Charging And LED Indicator Light

Build-in lithium battery, can be charged by USB port, see below picture:



The indicator light status display as below:

	LED Display	Light Indication
Blue Light	Flash slow	Ready to pair
	Stay solid	Paired
Red Light	Flash fast	Low battery
	Stay solid	Charging in process
	OFF	Fully charged

8. Product Care

Your device is designed to be small, as an electronic device, it must be treated carefully. Putting unnecessary pressure on it or striking the device against other objects may cause damage.

- Do not drop, crush, or apply excessive force to the device.
- Do not expose your device to moisture, extreme or prolonged heat, cold, humidity, or other adverse conditions. Avoid storing it in damp, humid or wet places as it is not waterproof.
- Clean the unit with a soft cloth or damp chamois leather. Never use solvents.
- The unit can only be opened by qualified person.
- This device contains magnets. Keep magnetic field sensitive products such as credit cards and video screen away from this device to avoid damage or malfunction.

This device complies with part 15 of the FCC rules. Operation is subject to the following two conditions:

- (1) this device may not cause harmful interference, and
- (2) this device must accept any interference received, including interference that may cause undesired operation.

Changes or modifications to this unit not expressly approved by the party responsible for compliance could void the user's authority to operate the equipment.