

USER MANUAL OF SMART KIT

IMPORTANT NOTE:

Read the manual carefully before installing or connecting your Smart kit(Wireless module). Make sure to save this manual for future reference.

CONTENTS

❶ SPECIFICATION.....	1
❷ PRECAUTIONS	1
❸ DOWNLOAD AND INSTALL APP.....	2
❹ INSTALL THE SMART KIT.....	3
❺ USER REGISTRATION	4
❻ NETWORK CONFIGURATION.....	5
❼ HOW TO USE APP.....	16
❽ SPECIAL FUNCTIONS.....	18

DECLARATION OF CONFORMITY

Hereby, we declare that this Smart kit is in compliance with the essential requirements and other relevant provisions of Directive 2014/53/EU. A copy of the full DoC is attached.
(European Union products only)

1 SPECIFICATION

Model: OSK102,EU-OSK103,US-OSK103

Standard: IEEE 802. 11b/g/n

Antenna Type: Printed PCB Antenna

Frequency : WLAN 2400~2483.5 MHz

Operation Temperature:0°C~45°C/32°F~113°F

Operation Humidity: 10%~85%

Power Input: DC 5V/300mA

Maximum Transmitted Power: 19.8dBm Max

2 PRECAUTIONS

- Applicable system: iOS, Android.
(Suggest: iOS 8.0 or above, Android 4.0 or above)
 - Please keep you APP up to date with the latest version.
 - Due to special situation may be occurred, we explicitly claims below: Not all of the Android and iOS system are compatible with APP. We will not be responsible for any issue as a result of the incompatibility.
- **Wireless safety strategy**
Smart kit only support WPA-PSK/WPA2-PSK encryption and none encryption .
WPA-PSK/WPA2-PSK encryption is recommended.
- **Cautions**
 - Due to different network situation, control process may return time-out sometimes. If this situation occurs, the display between board and App may not be the same, please do not feel confused.
 - Smart Phone camera needs to be 5 million pixels or above to make sure scan QR code well.

- Due to different network situation, sometimes, request time-out could happen, thus, it is necessary to do network configuration again.
- The APP system is subject to update without prior notice for product function improvement. The actual network configuration process may be slightly different from the manual, the actual process shall prevail.
- Please Check The Service Website For More information.

3 **DOWNLOAD AND INSTALL APP**

CAUTION: The following QR Code is only available for downloading APP. It is totally different with the QR code packed with SMART KIT.



Android

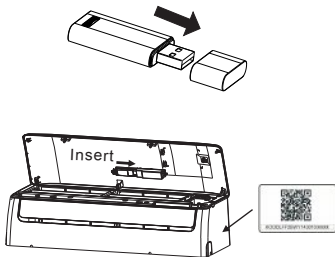


iOS

- Android Phone users: scan Android QR code or go to google play, search 'NetHome Plus" app and download it.
- iOS users: scan iOS QR code or go to APP Store, search 'NetHome Plus" app and download it.

4 INSTALL THE SMART KIT(wireless module)

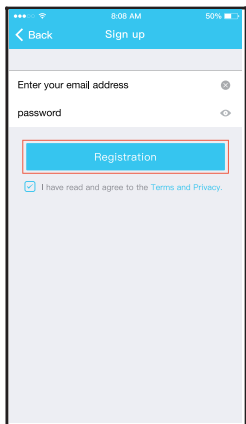
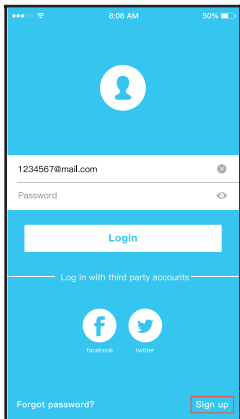
- ① Remove the protective cap of the smart kit (wireless module)
- ② Open the front panel and insert the smart kit (wireless module) into the reserved interface.
- ③ Attach the QR code packed with Smart kit (wireless module) to the side panel of the machine, ensure it is convenient to be scanned by the mobile phone. Alternatively, user can take picture of the QR Code and save in into their own phone.



WARNING: This interface is only compatible with SMART KIT(wireless module) provided by the manufacturer.

5 USER REGISTRATION

- Please ensure your mobile device is connected to Wi-Fi router. Also, the Wireless router has already connected to Internet before doing user registration and network configuration.
- It is better to log in your email box and active your registration account by clicking link in case you forget the password. You can log in with the third party accounts.



① Click "Sign up "

② Enter your email address and password, and then click "Registration"

6 NETWORK CONFIGURATION

Cautions

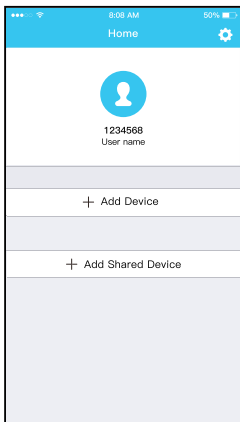
- It is necessary to forget any other around network and make sure the Android or iOS device just connect to the Wireless network you want to configure.
- Make sure the Android or iOS device Wireless function works well and can be connected back to your original Wireless network automatically.

Kindly reminder:

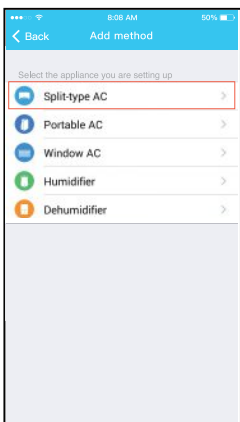
User must finish all the steps in 8 minutes after powering on AC, otherwise you need to power on it again.

■ Using Android device to do network configuration

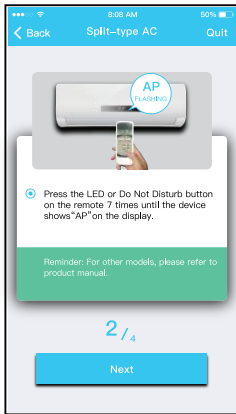
- ① Make sure your mobile device has already been connect to the Wireless network which you want to use. Also, you need to forget other irrelevant Wireless network in case it influences your configuration process.
 - ② Disconnect the power supply of AC.
 - ③ Connect the power supply of AC, and continuously press the “LED DISPLAY” or “DO NOT DISTURB” button seven times in 10 seconds.
 - ④ When the AC displays “AP”, it means that the AC wireless has already entered into “AP” Mode.
- Some type of AC do not need the ② step to be in AP mode



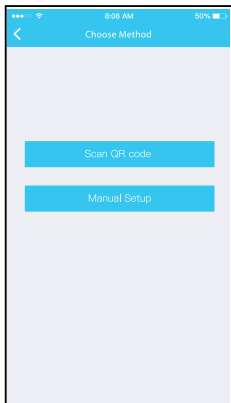
⑤ Press “ + Add Device ”



⑥ Select the appliance you are setting up



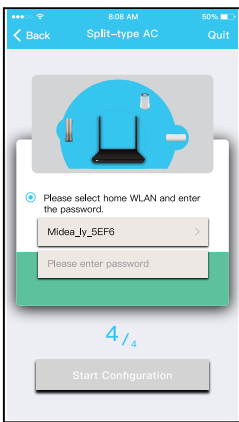
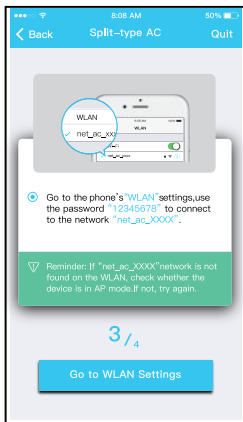
⑦ Follow the above steps to enter "AP" mode.



⑧ Choose the network configuration method.

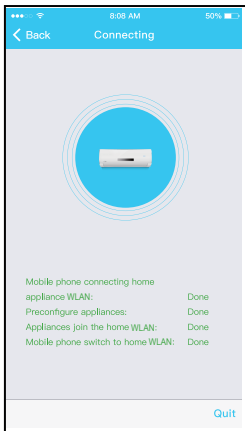


⑨ Choose the “ Scan the QR code ” method.

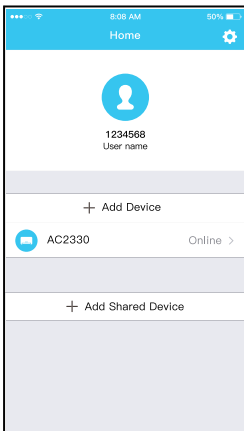


⑨ Or choose the “Manual Setup” method.

⑩ Please enter password



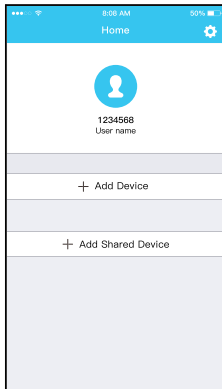
⑪ Network configuration is successful



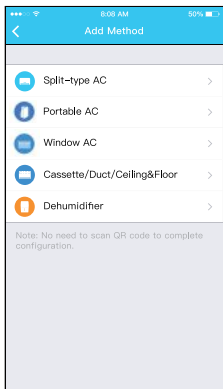
⑫ Configuration Success, you can see the device on the list.

■ Using iOS device to do network configuration

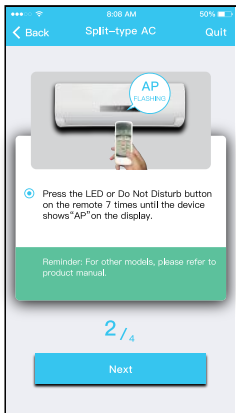
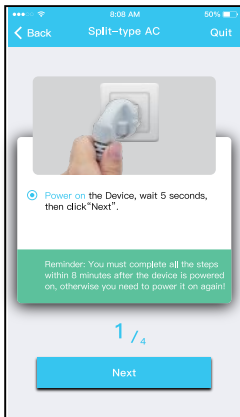
- ① Make sure your mobile device has already been connected to the Wireless network which you want to use. Also, you need to forget other irrelevant Wireless network in case it influences your configuration process.
- ② Disconnect the power supply of AC(some units).
- ③ Connect the power supply of AC, and continuously press the “LED DISPLAY” button or “DO NOT DISTURB” button seven times in 10 seconds.
- ④ When the AC displays “AP”, it means that the AC Wireless has already entered into “AP” Mode.



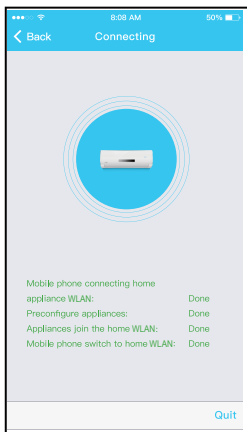
- ⑤ Press “+ Add Device”



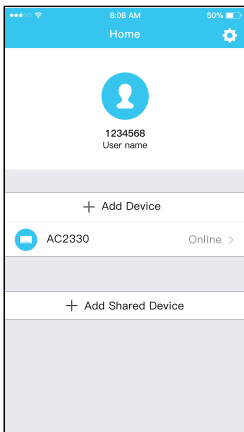
- ⑥ Select the appliance you are setting up



⑦ Follow the above steps to enter "AP" mode.



- ⑩ Network configuration is successful



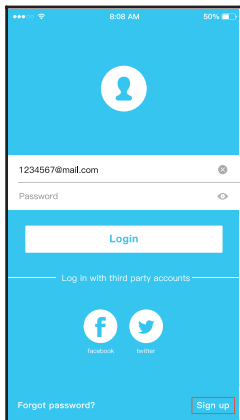
- ⑪ Configuration Success, you can see the device on the list.

NOTE:

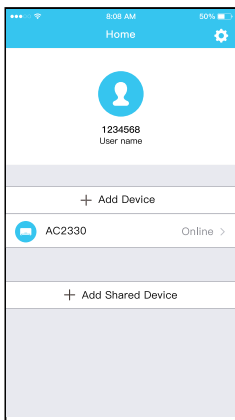
- When finishing network configuration, APP will display success cue words on the screen.
- Due to different internet environment, it is possible that the device status still display “offline” . If this situation occurs, it is necessary to pull and refresh the device list on the APP and make sure the device status become “online” . Alternatively, user can turn off the AC power and turn on it again, the device status will become “online” after few minutes.

7 HOW TO USE APP

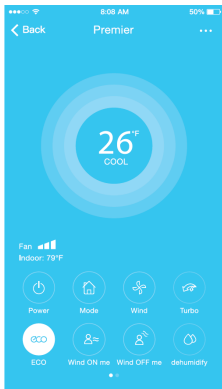
Please ensure both your mobile device and air conditioner are connected to the Internet before using app to control the air conditioner via internet, please follow the next steps:



① Click " Sign up "



② Choose the air conditioner.



- ③ Thus, user can control air conditioners on/off status, operation mode, temperature, fan speed and so on.

NOTE:

Not all the function of the APP is available on air conditioner. For example: ECO, Turbo, Swing function, please check the user manual to find more information.

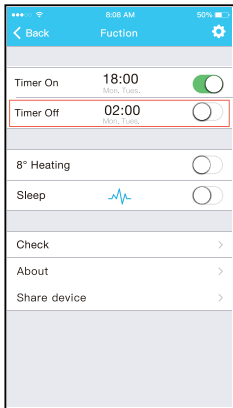
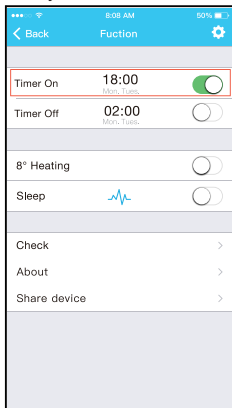
8 SPECIAL FUNCTIONS

Including: Timer on, Timer off, 8°C Heat, Sleep, Check.

NOTE: If the air conditioner do not support the above function, the function will be hid from the function list.

■ Timer on/Timer off

Weekly, user can make an appointment to turn on or off AC on specific time. User also can choose circulation to keep the AC under schedule control every week.



8:08 AM 50%

< Back Timer On OK

24 H

12 H

	08 09 10	03 04 05
	11	06
	12 13 14	07 08 09

Repeat Mon, Thur. >

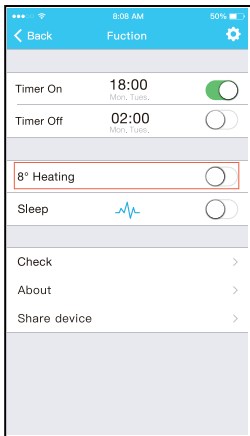
8:08 AM 50%

< Back Repeat

Monday	✓
Tuesday	✓
Wednesday	✓
Thursday	✓
Friday	✓
Saturday	✓
Sunday	✓

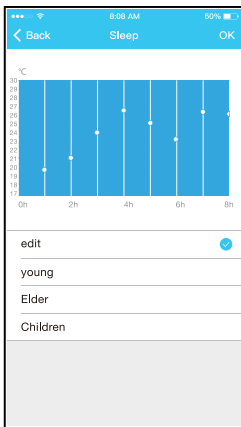
■ 8°C Heat

User can let the AC run under 8°C Heat by one-click. When people go outside, this function can protect your furniture from frost damage.



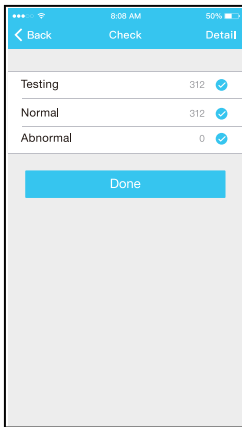
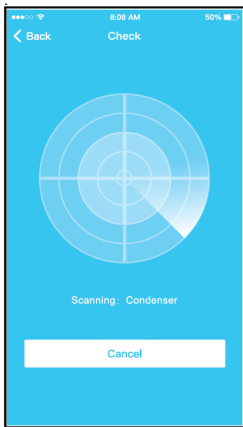
■ Sleep

User can customize their own comfortable sleep by setting target temperature.



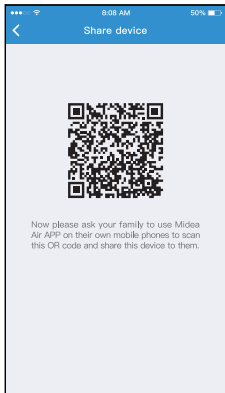
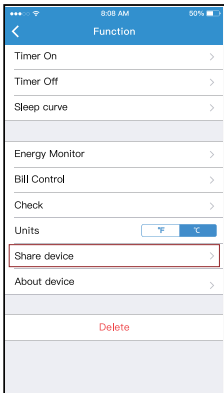
■ Check

User can simply check the AC running status with this function. When finishing this procedure, it can display the normal items, abnormal items, and detail information.

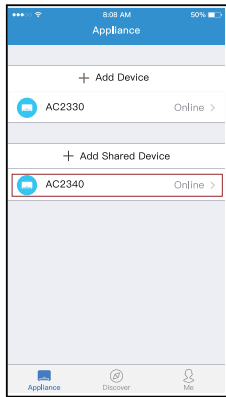
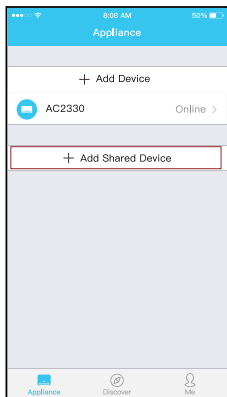


■ Share Device

The air conditioner can be controlled by multi-users at the same time by Share Device function.



- ① Click "Share device" ② QR code display.



③ The other users must log in Nethome Plus app first, then click Add Share Device on their own mobile, then ask them to scan the QR code.

④ Now the others can add the shared device.

CAUTIONS:

FCC ID: 2AS2 HMZ NA19

IC : 24951-MZ NA19

This device complies with Part 15 of the FCC Rules and Industry Canada's licence-exempt RSSs.

Operation is subject to the following two conditions:

- (1) This device may not cause interference; and
- (2) This device must accept any interference, including interference that may cause undesired operation of the device.

Only operate the device in accordance with the instructions supplied.

Changes or modifications to this unit not expressly approved by the party responsible for compliance could void the user's authority to operate the equipment.

This device complies with FCC radiation exposure limits set forth for an uncontrolled environment. In order to avoid the possibility of exceeding the FCC radio frequency exposure limits, human proximity to the antenna shall not be less than 20cm (8 inches) during normal operation.

NOTE: This equipment has been tested and found to comply with the limits for a Class B digital device, pursuant to part 15 of the FCC Rules. These limits are designed to provide reasonable protection against harmful interference in a residential installation. This equipment generates, uses and can radiate radio frequency energy and, if not installed and used in accordance with the instructions, may cause harmful interference to radio communications. However, there is no guarantee that interference will not occur in a

particular installation. If this equipment does cause harmful interference to radio or television reception, which can be determined by turning the equipment off and on, the user is encouraged to try to correct the interference by one or more of the following measures:

- Reorient or relocate the receiving antenna.
- Increase the separation between the equipment and receiver.
- Connect the equipment into an outlet on a circuit different from that to which the receiver is connected.
- Consult the dealer or an experienced radio/TV technician for help.

Manufacturer:

Guangdong Meizhi Compressor Co.,Ltd.
Shunfengshan Industrial Devp. Zone,
Shunde,528333 Foshan city, Guangdong,
PEOPLE'S REPUBLIC OF CHINA

**Company will not be liable for any issues
and problems caused by Internet, Wireless
Router and Smart Devices. Please contact
the original provider to get further help.**

Importer and Address:

CS374U-APP(OEM)
16110800000349
20190311

技术要求：
铜版纸105克，
74mm*105mm
彩色印刷

基准说明书为单英文版，无商标，制造商信息，也无欧盟区域DOC内容，只是兼容了欧盟RED指令信息和北美FCC指令等内容。由业务根据销售的区域及客户要求，通知订单对内容进行修订，欧盟地区需要由业务添加DoC合规声明文件（建议放在说明书倒数第二页），将完整说明书电子档提交给制单。