

MEIZU

EP51

MEIZU EP51 Bluetooth Earphones

www.meizu.com/en

EN

Package Contents

- Earphones
- Rubber covers in S, L and XL sizes
- cable
- user manual

Quick Start

1 Please choose rubber covers with suitable size.



2 Place the rubber cover to the proper position



3 Pairing: Hold the middle key until the light is blinking red and blue, which means the earphones are in pairing mode. Once there is a paired device connected, the light will be blinking blue for 1 second. If no device is paired, hold the key to turn off the earphones.



Hold for 2-4 secs:
Power on/off

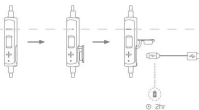
4 Function: Operation



Press: Volume up Hold for 2 secs: Previous song
 Press: Answer/end a call Hold: Reject a call
 Press: Play/pause music
 Press: Volume down Hold for 2 secs: Next song

5 Charging

Charging usually takes 1.5-2 hours. The red light will be on during charging, and off when charging finishes.



6 Wearing



Functions and Operations

Function: Operation and Alert

MFB (Multi-function button):

Power on/off: Hold the MFB for 2-3 seconds to power on, and 3-4 seconds to power off.

- When the system is on, the blue light will be on for 1 second. The red light will blink when power off.
- The earphones will enter auto-connecting mode everytime it's turned on. If there is no device connected within 2 minutes, the earphones will power off.

Pairing: Hold the MFB for 5 seconds will boost the earphones into searching status, and the red and blue lights will be blinking. The blue light will blink on a device connection; if none, the earphones will power off after 5 minutes.

Reject calls: Hold the MFB for 2 seconds

Answer/end calls: Press the MFB to answer a call, during the call the blue light will blink every 3 seconds. The ringtone is the same as the phone, and hanging up will cause a beep sound, while getting through a call will cause a ding-dong sound.

Play/pause music: When playing music, press the MFB to pause or continue.

Conference call: If you receive a second call while already on an active call, press the MFB key to place the first call on hold and answer the second one, or press and hold the MFB key to end the first one and answer the second one.

VOL+/VOL-

a. Volume up: Press the + key to volume up. There are 16 volume levels and each pressing will add 1 level. When reaches maximum there will be beep alert. (Quick volume up is not supported. Beep alert is existed in both volume up and down, and the alerts for maximum and minimum are different)

b. Volume down: Press the - key to volume down. There are 16 volume levels and each pressing will decrease 1 level. When reaches minimum there will be beep alert. (Quick volume down is not supported. Beep alert is existed in both volume up and down, and the alerts for maximum and minimum are different)

More Functions

Secured pairing: When connect to a device with Bluetooth edition lower than 3.0, the default security code is '0000'

Out of reach: When the connection is interrupted, there will be a ding-dong alert, and the earphones will enter standby mode with the blue light blinking twice for every 3 seconds. After 5 minutes of standby mode it will enter auto-pairing mode with the blue light blinking every second. If there is still no device connected within 5 minutes, the earphones will power off.

Disconnection (turn off Bluetooth on phone): The earphones will beep for once and enter auto-connecting mode for 2 minutes. If no connection, it will power off.

Battery/volume status:

- Displays battery on the status bar of iOS
- When adjust volume on the device, the volume will be displayed on the phone screen. This function need Phone system support.

Safety Precautions

- Do not tear down or modify the earphones, or it might be damaged or malfunctioned. Losses due to this reason are not under warranty.
- Do not use in environments where Ingress Protection (IP) rating exceeds limitations or expose to excess humidity. Damages resulting from liquid is not under warranty.
- Do not expose the earphones in extreme weather (below 0°C or above 45°C).
- Keep the earphones indicating light away from children or animals' eyes.
- Do not use the earphones in thunderstorm weather which might cause malfunction and increase the risk of electric shock.

Battery warnings

The product contains built-in lithium battery to avoid explosion, please do not expose the product under intense sunlight, and keep it away from fire. Dispose the lithium battery according to your local laws and regulations, do not dispose it as regular household garbage.

Unless special instruction is given in user manual or quick start manual, the lithium battery should not be took out or replaced by the user, the product might be damaged and cause other dangers.

After-sales Service

If a malfunction or damage occurs due to quality issues, please take the product to authorized sales agency.

To meet the standards of RoHS and other statutory requirements, the hazardous substances in the product are stated as followed.

Part name	Hazardous substances					
	Pb	Hg	Cd	Cr(VI)	PBB	PBDE
PCBA	x	o	o	o	o	o
Case and accessory	x	o	o	o	o	o

This form is in accordance with requirements of SJ/T 11364

O: Meets the standards of GB/T 26572

X: Exceeds the standards of GB/T 26572

The part with "X" mark means the hazardous elements cannot be replaced due to global technical level.

PCBA Including printed circuit board and its parts, and electron components.

The parts of the product you've purchased might differ from the above form due to the model differences.

Product sold in the Chinese market must contain this mark, inside which the number represents the environmental life span of the product under normal usage.

MEIZU Technology Co., Ltd.

MEIZU Technology Bldg, Technology & Innovation Coast, Zhuhai, Guangdong, China.



Warranty Card

Warranty period

Since the date of purchase, returns are acceptable within 7 days and exchanges are acceptable within 15 days. The warranty is valid for 1 year.

Free of charge

If a malfunction or damage occurs due to quality issues within warranty period, customer can go to authorized sales agency for free repair with this warranty card and purchasing vouchers.

The followings are not under warranty:

- No warranty card or the product maintenance label is damaged,
- Damage due to unauthorized tearing down,
- Man-made damages due to water or falling,
- Damages due to force majeure.

User Info	Name	Email	
	Address		
Product Info	Phone	Zip code	
	Item	Barcode	
	Model	number/serial number	
Sales Info	Agency		
	Address		
	Phone	Zip code	
Remark	Purchase date	Invoice number	

Note: (1) This form should be confirmed and stamped by the sales agency;

(2) For product which applies to the "three guarantees" rules, this warranty card equals to three guarantees card;

(3) The maintaining record would be depend on the record of authorized service agencies. Please keep this card after you apply for a service.

MEIZU Technology Co., Ltd.

MEIZU Technology Bldg, Technology & Innovation Coast, Zhuhai, Guangdong, China.



Important Safety Instructions

FCC Statement

1. This device complies with Part 15 of the FCC Rules. Operation is subject to the following two conditions:

- (1) This device may not cause harmful interference.
- (2) This device must accept any interference received, including interference that may cause undesired operation.

Note: The grantee is not responsible for any changes or modifications not expressly approved by the party responsible for compliance. Such modifications could void the user's authority to operate the equipment.

NOTE: This equipment has been tested and found to comply with the limits for a Class B digital device, pursuant to part 15 of the FCC Rules. These limits are designed to provide reasonable protection against harmful interference in a residential installation.

This equipment generates uses and can radiate radio frequency energy and, if not installed and used in accordance with the instructions, may cause harmful interference to radio communications. However, there is no guarantee that interference will not occur in a particular installation. If this equipment does cause harmful interference to radio or television reception, which can be determined by turning the equipment off and on, the user is encouraged to try to correct the interference by one or more of the following measures:

- Reorient or relocate the receiving antenna.
- Increase the separation between the equipment and receiver.
- Connect the equipment into an outlet on a circuit different from that to which the receiver is connected.
- Consult the dealer or an experienced radio/TV technician for help

RF Exposure Statement

RF Exposure Statement

This equipment complies with FCC radiation exposure limits set forth for an uncontrolled environment. This equipment should be installed and operated with minimum distance of 5 mm between the radiator and your body.

IC Statement

This device complies with Industry Canada licence-exempt RSS standard(s). Operation is subject to the following two conditions: (1) this device may not cause harmful interference, and (2) this device must accept any interference received, including interference that may cause undesired operation.

Le présent appareil est conforme aux CNR d'Industrie Canada applicables aux appareils radio exempts de licence. L'exploitation est autorisée aux deux conditions suivantes :

- (1) l'appareil ne doit pas produire de brouillage, et
- (2) l'utilisateur de l'appareil doit accepter tout brouillage radioélectrique subi, même si le brouillage est susceptible d'en compromettre le fonctionnement.

This equipment complies with IC radiation exposure limits set forth for an uncontrolled environment. This equipment should be installed and operated with minimum distance of 5 mm between the radiator and your body.

Cet équipement est conforme aux limites d'exposition aux rayonnements de la IC établies pour un environnement non contrôlé. Cet équipement doit être installé et fonctionner à au moins 5 mm de distance d'un radiateur ou de votre corps.