

Memorex[®]

user's GUIDE

Wireless Office ScrollPro

6 Button Programmable Mouse

Version 1.0



RF- Wireless



USB & PS/2



Optical Mouse

plug
&
play

A. Introduction

Congratulations on your purchase of the Wireless Office ScrollPro Optical Mouse! This mouse uses optical technology instead of a dust-collecting roller ball to track movements. Signals are sent to a receiver by means of radio frequency (RF) in order to reduce interference from other wireless devices such as TV remote controls and cordless phones. Please take time to read the following instructions carefully. They will help you get full use of your mouse and keep it working reliably for many years.

B. What's in this package

- Wireless Office ScrollPro Optical Mouse (Part # 32022384)
- RF Wireless Receiver
- ScrollPro Mouse Series Driver CD
- 2 AAA Batteries

C. System Requirements

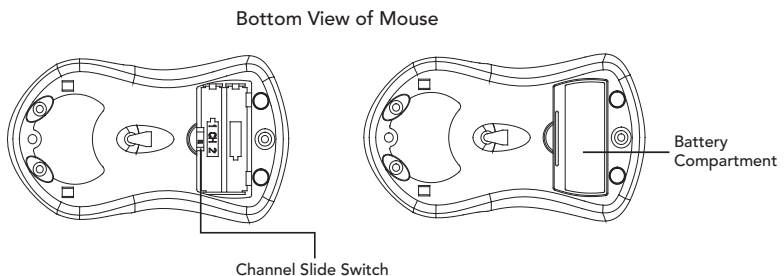
- IBM or compatible PC
- Available USB 1.1/2 or PS/2 port
- CD-ROM or DVD drive (for driver installation. Users without an optical disc drive can download the drivers from the Memorex website at www.Memorex.com)
- Microsoft Windows 98SE, Windows Me, Windows 2000, or Windows XP operating systems.

D. Preparing the Wireless Office ScrollPro Optical Mouse

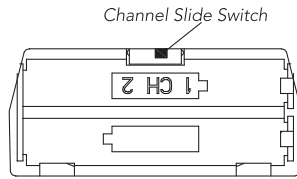
Be sure to follow the installation steps in the correct order so that your mouse works properly.

Step 1: Insert the batteries.

- Turn the mouse over to find the battery compartment. Lift the cover by pressing in the thin plastic strip just below the half-circle indentation and pulling up.



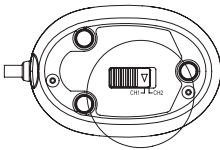
- Use the slide switch located inside the battery compartment to select either channel 1 or channel 2 for the RF transmission. Remember which number you choose because you will set the receiver switch to the same channel number later.



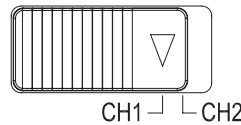
- Insert the two AAA batteries (included) into the compartment. Follow the polarity signs (+ and -) in the battery compartment so the batteries face the correct direction. Inserting the batteries in the wrong direction may damage both the mouse and the batteries.
- Replace the battery compartment cover by first inserting the two bottom tabs into their holes and lightly pressing down.

Step 2: Set up the Receiver

- Turn the receiver over and find the RF channel slide switch. Select the same channel, either channel 1 or channel 2, that you selected on the mouse before you inserted the batteries.

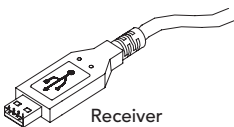


Bottom View of Receiver



Slide Switch Setting of Receiver

- Make sure your computer is turned off.
- Connect the receiver to the PC by plugging the green PS/2 connector at the end of the receiver to the mouse port of the computer or remove the green PS/2 connector and use the USB connector in an available USB port on the computer.



- Set the receiver flat on a surface and follow these guidelines:
 - Leave a minimum of 8 inches of clearance between the receiver and other electronic devices.
 - Leave a minimum of 8 inches of clearance between the receiver and the monitor.
 - The mouse can operate at a range of up to 6 feet from the receiver.
 - The receiver should rest on a non-metallic surface for best reception.

Step 3: Synchronizing the Receiver and the Mouse.

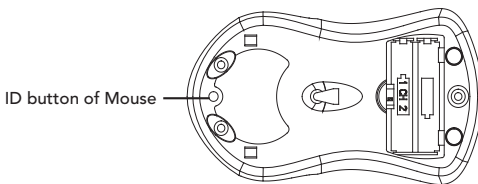
The receiver and the mouse each contain two channels, and each channel contains 256 distinct ID codes that are randomly selected when you press the ID button on the Receiver. This ID-recognition function helps protect against interference from other wireless devices in the same environment. After you have selected the same channel on both the mouse and the receiver, the next step is to match the IDs of the mouse and receiver through the synchronization process so that they can communicate with each other.

- Turn the computer on.
- Press once on the ID button on the top of the receiver. The green LED light below the button will start to blink slowly.



ID Button of Receiver

- Turn the mouse over and find its ID button near the top. Press the ID button with a blunt pointed object such as the tip of a ballpoint pen or a bent paper clip and hold the button down until the blinking light on the receiver stops blinking and remains a steady green. This may take up to 20 seconds.



IMPORTANT: If 30 seconds pass before you find and press the mouse ID button, you must restart the process again by pressing the ID button on the receiver until the light blinks and once again find and hold down the ID button on the bottom of the mouse.

- Verify that the mouse and receiver are properly synchronized by moving the mouse around on a flat surface and clicking a button or two. If the green LED on the receiver blinks fast and steadily with the movement of the mouse, the mouse and receiver are properly communicating.
- If the receiver does not respond to movement of the mouse and you have repeated the synchronization process, check to see if the batteries are properly installed and that both the mouse and the receiver are set to the same channel number, then repeat the process again. If the mouse is still not working properly, check the "Troubleshooting" section for tips on how to solve your problem.
- If you find interference from other wireless products such as other wireless mouse users nearby, try switching channels on the mouse and receiver and synchronize again.
- You will need to resynchronize the mouse and the receiver if you remove the batteries for replacement or cleaning. The scroll wheel on the mouse will light up when the batteries are low on power. Replace them right away.

E. Using the Mouse

The Wireless Office Scroll Pro Optical Mouse uses light to sense movement. Use the mouse on an opaque surface. The optical mouse cannot work on a glass, translucent, or reflective surface that deflects the light.

The mouse goes into a sleep or suspend mode after 10 minutes. The blue light at the rear of the mouse turns off to indicate that the mouse is in its sleep mode. Move the mouse or click the scroll button (suggested) or one of its other buttons to wake it.

You may notice that the mouse moves the cursor on the screen twice as fast as a standard mouse does. The mouse moves the cursor at 800 dots per inch (dpi) while a standard mouse moves the cursor at only 400 dpi. You can change the cursor movement speed by using the mouse properties in the CONTROL PANEL under MY COMPUTER.

F. Adding the Extra Mouse Features with the Included Software

At this point your Wireless Office ScrollPro Optical Mouse will work well but will not be able to use the special features for altering the scroll wheel settings, reprogramming the buttons, or getting shortcuts to Office programs. These additional features require the installation of the drivers on the ScrollPro Mouse Series Driver CD. Follow the steps below to add these features.

Step 1: Remove Old Mouse Drivers

- In order to avoid conflicts with previously installed mouse drivers and software, you will need to delete the following files by right-clicking on the MY COMPUTER icon and then clicking on PROPERTIES.
 - o Win 98 SE, Me: select the DEVICE MANAGER tab; look for the MOUSE listing under the devices. Double-click on MOUSE, then right-click on the device that is listed. Select REMOVE to delete the driver. If there is more than one mouse device, remove the drivers for each one in the same manner.
 - o Win 2000, XP: select the HARDWARE tab. Select DEVICE MANAGER and look for the MOUSE listing. Double-click on MOUSE, then double-click on the device that is listed. Click the DRIVER tab and then select UNINSTALL. If there is more than one mouse device, remove the drivers for each one in the same manner.
 - o Reboot the computer. You are now ready to install the new software.

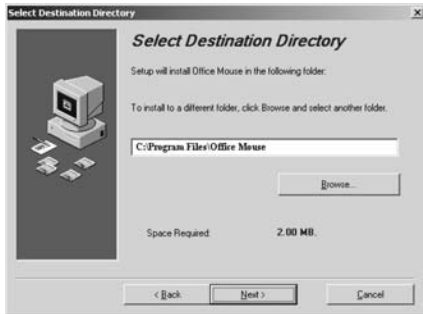
Step 2: Install the new software

(Windows 98SE/Me/2000/XP)

- Insert the supplied installation CD into your CD-ROM drive.
- The software should automatically launch itself. If it does not:
 - a. Click the START button on the task bar.
 - b. Select RUN and click on BROWSER.
 - c. Select the letter of the CD-ROM drive into which you placed the installation disc.
 - d. Double-click on the Memorex.exe file.
 - e. Click on the OK button to launch the program.



- Select NEXT. Information about the FCC requirements pops up. Read the notice and then click NEXT again.
- Your first choice is the folder where the mouse files will be kept. The default folder is "Programs," and this is typically the best choice. Click on NEXT again to bring up the folder choice for the icons. Click NEXT once more.



- A "Start Copying Files" notice pops up; click on NEXT. In Windows XP a notice may pop up warning about Windows Logo testing. The PS/2 Mouse Filter Driver will not affect Windows XP and may have completed the testing process after this manual was printed. Click on CONTINUE ANYWAY.



- The setup is complete. Remove the installation CD-ROM from your drive and click FINISH to reboot your computer.

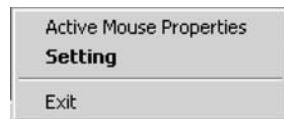


Step 3: Programming Your Mouse

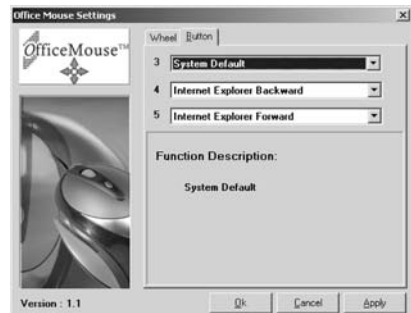
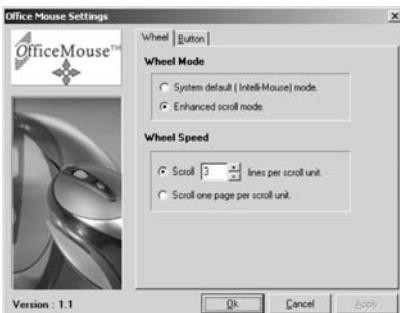
After your computer has successfully rebooted, the software places a white mouse icon in the lower right corner of your screen.



- Right-clicking on this icon will give you the following options:



- Click on SETTING to open the program for the Wireless Office ScrollPro Optical Mouse. (You can get to the same area by double-clicking on the mouse icon). You will get the Windows Mouse Properties area if you click on the "Active Mouse Properties" Selection.
- There are two programming options that appear: Wheel and Button. The settings for the wheel options are the first choices you will see, but you can click on the Button tab to open up the options for programming the buttons in a way different from the default settings.



Wheel

Choose the **Wheel Mode** you prefer--

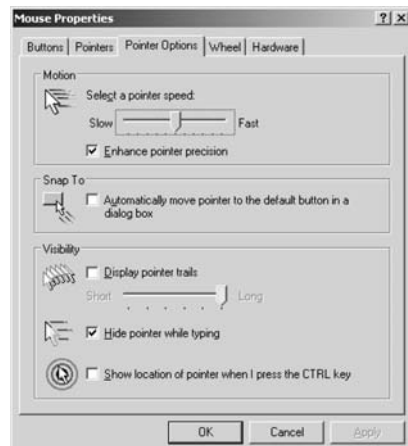
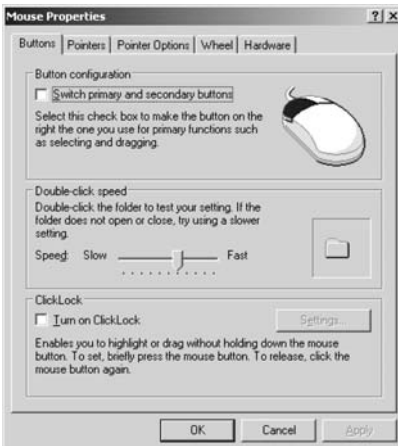
- o The System default (Intelli-Mouse) mode setting is standard scrolling up and down with the scroll wheel.
- o Enhanced scroll mode allows you to select different Wheel Speed settings listed under the Wheel Speed settings.
- **Wheel Speed** allows you to select the number of lines per scroll unit. Higher numbers mean faster speeds. The second choice will scroll even faster--pages instead of lines.

Button

- There are three buttons on the mouse that can be programmed to issue different commands: button 3 (the scroll wheel that can be pushed down as a button), button 4 (the left side button), and button 5 (the right side button).
- Each button offers 57 choices of commands from which to choose. Select the ones you want to use from the scroll down arrow.
- Button 6 accesses the Office shortcuts. Please see section G for instructions to program this button

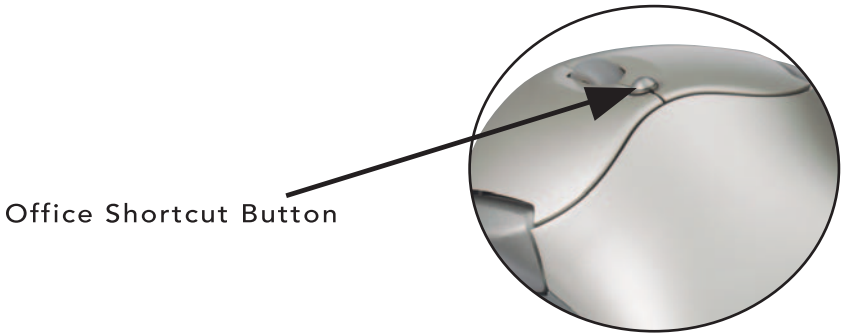
The programmed mouse settings you choose will only take effect after clicking on "APPLY" and then "OK."

- **OPTIONAL:** Clicking on the Active Mouse Properties will bring up options for the mouse buttons, pointers, pointer options, the scroll wheel, and hardware information. You can customize the operation of your mouse if you like or leave the settings as they are.



G. Using the Office Shortcut Feature

The Office Shortcut button is located just above the scroll wheel on your mouse. Pressing the button brings a shortcut circle to the screen that allows the mouse to click on a pie-shaped section to quickly open up a Microsoft Office Application.



The Wireless Office ScrollPro Optical Mouse supports MS Office 2000 and XP. It will also work in MS Office 97.

The applications are (starting from the top and moving clockwise):

1. Microsoft Excel
2. Microsoft PowerPoint
3. My Computer
4. Internet Explorer
5. My Documents
6. Microsoft Access
7. Microsoft Outlook
8. Microsoft Word



Pressing the red button in the center of the circle closes the Office Shortcut.

H. Using the Office Application Shortcut Feature

When a Microsoft Application is open, the Office shortcut button adds different shortcut features that apply to the particular application that is open. In Excel, PowerPoint, Access, Outlook, and Word, the shortcuts appear in Example 1 below. In Internet Explorer the shortcuts change to those in Example 2.

Example 1

1. Save
2. New file
3. Bold
4. Find
5. Print
6. Undo
7. Redo
8. Open file



Example 2

1. Home
2. Back
3. Forward
4. Stop
5. Refresh
6. Favorites
7. Search
8. Print



I. Uninstalling the Mouse Drivers

If you ever need to remove the mouse drivers from your computer, click MY COMPUTER, then CONTROL PANEL, and select the ADD/REMOVE PROGRAMS icon. Select OFFICE MOUSE and click on the CHANGE/REMOVE button. The software will remove itself completely from your computer. You can also remove the drivers by clicking on the "Uninstall" application in the OFFICE MOUSE folder created in the PROGRAMS folder or whichever folder you selected when installing the Wireless Office ScrollPro Optical Mouse.

J. Troubleshooting

If you are experiencing problems with your mouse, please check the following:

- a. Make sure the mouse batteries are fresh and have not used up their storage power. **The first sign of low batteries is intermittent operation of the mouse functions. Please check this first.**
- b. Remove the receiver connector and check the end for bent or broken pins. If the plug appears normal, reinsert the plug into its ports on the PC while your computer is off.
- c. Make sure the receiver plug is inserted into the mouse port on the PC. Compare the icon on the plug to that on the port if necessary to be sure they match.
- d. Check the batteries to be sure they are inserted correctly. Make sure the polarity of the batteries (+/-) corresponds with the polarity signs in the battery compartment.

- e. Check the channel settings on the mouse and the receiver to make sure they are set to the same channel, either CH 1 or CH 2. Try the alternate channel in case your first choice appears to work improperly.
- f. Other devices in the vicinity of the receiver may cause interference. It is strongly recommended to place the receiver at least 8 inches away from the monitor and other electronic devices in order to prevent signal disturbances. Place the receiver on nonmetallic surfaces for the best reception.
- g. If your PC system's BIOS setup has options for the mouse, make sure the options are set to the default settings. If you are not familiar with the BIOS, refer to your PC's manual for more information.
- h. If you have problems using the special mouse features, make sure you have installed the mouse driver correctly as described in Section F, "Adding the Extra Mouse Features." Also check that your computer system matches the hardware requirements listed in the manual.
- i. Use the mouse only on a clean, flat surface in order to ensure smooth and accurate action. Do not use the mouse on glass, translucent, or reflective surfaces.
- j. Keep all items away from direct sunlight, moisture, dirt, extreme heat, and abrasive chemical cleaning solutions.

Technical Support:

If you have trouble with the installation and the instructions above do not help you to resolve your issue, please contact Memorex Technical Support via email at techsupport@memorex.com, on-line at www.memorex.com, or call our toll free technical support at 1-877-Is It Live... (1-877-474-8548) between 9:00am and 6:00pm PST, M - F.

Product Registration:

To register your Wireless Office ScrollPro Optical Mouse (Part# 32022384) please visit us on-line at www.memorex.com or write to us with your name, address, phone number, model name, model number, date of purchase and place of purchase at: Memorex Products, Inc., 17777 Center Court Dr., Suite 800, Cerritos, CA 90703.

Warranty Information:

Memorex Products One-Year Limited Warranty-Memorex Products will replace this product free of charge if it is found to be defective in materials or workmanship during normal usage conditions for a period of one year from the date of purchase (proof of purchase is required). Other than product replacement (or refund if replacement is not possible), Memorex Products will not be responsible for an incidental or consequential damages arising from use of this product.

FCC Guidelines

This equipment has been tested and found to comply with the limits of a Class B digital device, pursuant to Part 15 of the FCC Rules. These limits are designed to provide reasonable protection against harmful interference in a residential installation. This equipment generates, uses, and can radiate radio frequency energy and, if not installed and used in accordance with the instructions, may cause harmful interference to radio communications. However, there is no guarantee that interference will not occur in a particular installation. If this equipment does cause harmful interference to radio or television reception, which can be determined by turning the equipment off and on, the user is encouraged to try to correct the interference by one or more of the following measures:

- Reorient or relocate the receiving antenna.
- Increase the separation between the equipment and receiver.
- Connect the equipment into an outlet on a circuit different from that to which the receiver is connected.
- Consult the dealer or an experienced radio/TV technician for help.

The Class B digital apparatus meets all the requirements of the Canadian Interference-Causing Equipment Regulation.

Cet appareil numérique de la class B respecte toutes les exigences du Règlement sur le matériel brouilleur du Canada.

Caution:

Any changes or modifications not expressly approved by the party responsible for compliance could void the user's authority to operate this equipment. Shielded interface cable, if any, must be used in order to comply with emission limits.



Memorex®

©2004 Memorex Products, Inc. • Cerritos, CA 90703 • www.memorex.com

All other brand or product names are trademarks or registered trademarks of their respective owners.

5395 6835