



TerraWave Solutions® 2.4 GHz 13 dBi Panel Antenna with N-Style Jack Connector

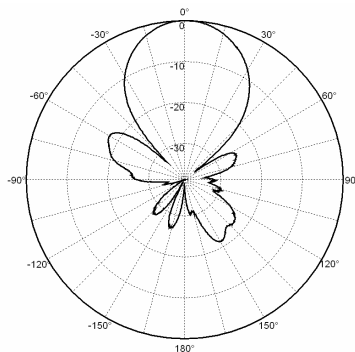
TerraWave's mid-gain 2.4 GHz 13 dBi directional antenna is perfect for a variety of wireless applications. This wide beamwidth antenna is single linear polarization and can be mounted in either a vertical or horizontal configuration. It consists of a patented, low cost, high performance circuit design enclosed in a UV stabilized ABS plastic radome with aluminum backplane for superior durability. Includes a pole mounting kit and TerraWave's Universal Articulating Pole Mount (TW-ART-MOUNTT).

All TerraWave antennas are covered by the Company's two-year TerraNet warranty program. For questions and to purchase product, contact a wireless networking solutions sales engineer at 210-375-8482, 800-851-4965 or sales@terrawave.com. Visit www.terrawave.com for additional information.

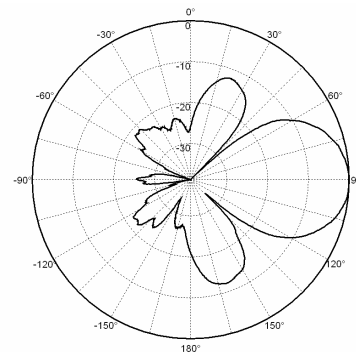


Electrical Specifications	
Model	T24130P10006GT
Frequency Range	2.4 - 2.5 GHz
Gain	13 dBi
Vertical Beamwidth	33°
Horizontal Beamwidth	33°
Polarization	Single linear, horizontal or vertical
VSWR	≤ 1.5:1
Front-to-Back Ratio	> 25 dB
Cross Polarization	> 20 dB
Power Rating	30 Watts
Impedance	50 Ohms

Mechanical and Environmental Specifications	
Dimensions (LxWxD)	7" x 7" x 1"
Weight	1.26 lbs.
Connector Type	Integrated N-Style Jack
Backplane	Aluminum
Radome	UV stabilized ABS plastic
Wind Survivability	125 mph
Wind Load	0.34 ft ²
Operating Temperature Range	-40°F to +140°F
Pole Mount Diameter Range	0.75" to 1.75"



E-Plane



H-Plane

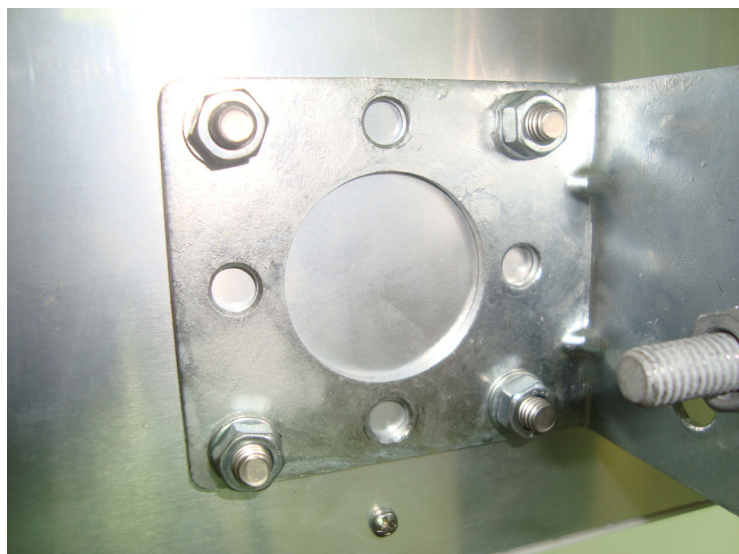


TerraWave Solutions® 2.4 GHz 13 dBi Panel Antenna with N-Style Jack Connector

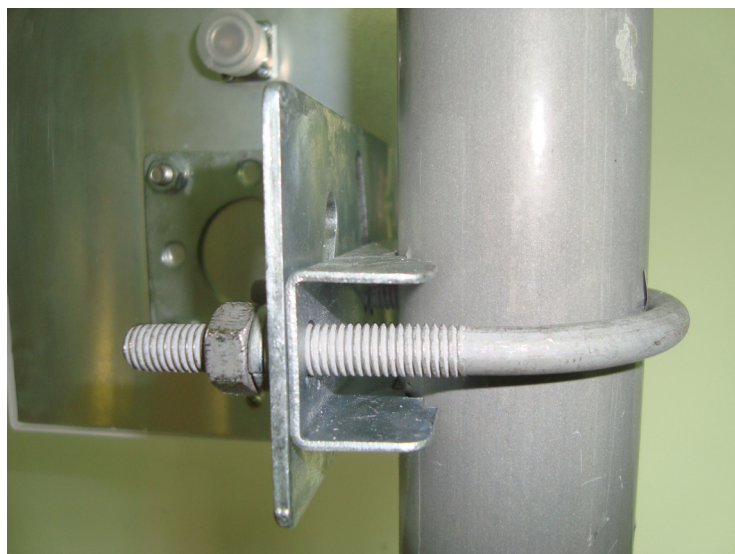
Mounting Information for T24130P10006GT



Mounted Antenna



Mount Secured to Antenna



Mount Secured to Pole/Mast

See TerraWave's website for information on TW-ART-MOUNTT