

FCC Compliance and Advisory Statement

This device complies with Part 15 of the FCC rules. Operation is subject to the following two conditions: 1) this device may not cause harmful interference, and 2) this device must accept any interference received, including interference that may cause undesired operation.

The equipment has been certified to comply with the limits for a Class B computing device pursuant to Part 15 of the FCC Rules. These limits are designed to provide reasonable protection against harmful interference in a residential installation. This equipment generates, uses, and can radiate radio frequency energy and, if not installed or used in accordance with the instructions, may cause harmful interference to radio communications. However, there is no guarantee that interference will not occur in a particular installation. If this equipment does cause harmful interference to radio or television reception, which can be determined by switching the equipment off and on. The user can try to correct the interference by the following measures:

1. Reorient or relocate the receiving antenna.
2. Increase the separation between the equipment and receiver.
3. Connect the equipment to an outlet on a circuit different from that to which the receiver is connected.
4. Consult the dealer or an experienced radio/TV technician for help.

Changes or modification not expressly approved by the party responsible for compliance could void the user's authority to operate the equipment.

FCC ID:BM100

This device complies with part 15 of the FCC rules. Operation is subject to the following two conditions: 1) this device may not cause harmful interference, and 2) this device must accept any interference received, including interference that may cause undesired operation.

Introducing the Star Mouse (BM100)

Before you start using the BM100, be sure to read this manual in its entirety.

Product View



System Requirements

Bluetooth enabled computer (either built-in or with USB dongle)

Mac OS X v10.2.8 or later

Microsoft Windows 98SE/2000/ME/XP

Package Content

BM100, 2 AAA batteries, charging cradle, adapter, travel bag and quick guide.

BM100 Installation

1. Insert the batteries

Push down on the top of the mouse cover, pull forward in the direction of the arrow

shown above to open the battery cover.

Insert 2chargeable* “AAA” batteries (included) and close the cover.

** Please **DO NOT** put non rechargeable batteries in the mouse. Charging can cause explosion, fire and/or personal injuries.*

2. Charge the batteries



Connecting the cradle to the Adapter. The Cradle has two kinds of LED lights(red and green) to indicate the status. When you connect the Cradle to the Power the two color(red and green) will flash by turns. Then before you put the mouse on the cradle,there is only red light will be illuminated. Before you put the mouse on the cradle, we suggest you to turn the Power ON/OFF switch to OFF. Because this step will shorten the time to charge the batteries. When you put the mouse on the cradle, the green light will be illuminated. For first time use, please charge the batteries fully. The complete charging process will take 4 to 5 hours. When the BM100 is fully charged, the green light on the cradle will turn off, and the red light will be not turn off until you unconnect the power of the cradle.

3. Use the BM100

The BM100 is fully recognized by the operating system. No software driver is required! The default button functions* are:

- Left button: Set as single click
- Right button: Set as control plus mouse click
- Wheel button: Set as none
- Wheel rotation: Scroll speed is set as medium

To wake up the mouse from sleep mode, click the mouse button! Do NOT press the “connect” button!

When you don't use the BM100 for a longer period of time, switch it off with the on/off switch on the button of the BM100 to conserve the batteries. Like this you avoid that you run out of battery life in the most crucial moments.

When the blue light on the mouse is blinking, which means the batteries are in low level. Charge the batteries soon to avoid running out.

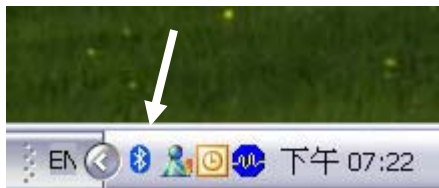
**Note for Mac users: The mouse button can be configured in Exposé for specific functions. Please refer to Exposé for detailed instructions.*

Use Bluetooth mouse on Windows XP SP2 Bluetooth stack steps.

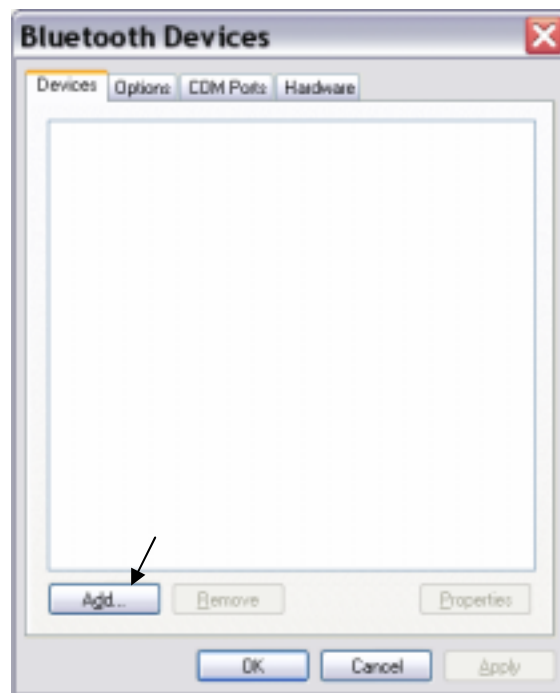
- (1) Press the **Pair Button** in the bottom of the mouse for 3-5 seconds. The mouse will be switched to the standby mode for pairing. Also the scroll in the mouse will turn to light blue colour.



- (2) Make sure the Bluetooth function in your PC is active. Click the Bluetooth icon in the tray.



- (3) Click [**Add**] button on Bluetooth Devices window.



(4) Check the “My device is set up and ready to be found” and press [Next] button.



Then it will start to search the Bluetooth device.



(5) Once it finds out the MIS Mouse device, choose the Mouse device and then click [Next] button.



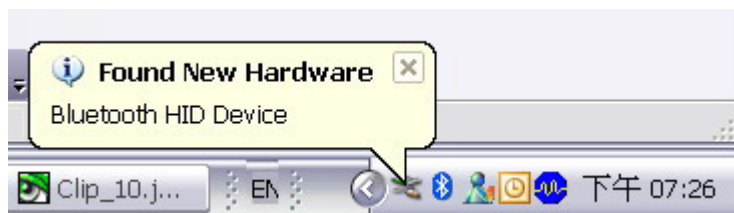
(6) Choose [Don't use a passkey] and press [next] button.



(7) It will connect to the Bluetooth Device.



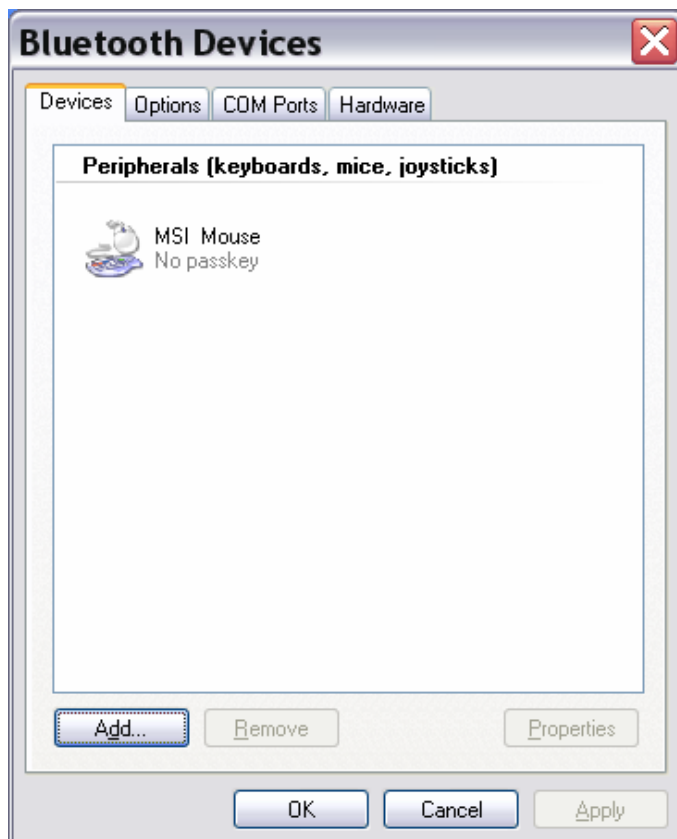
There is a window pop-up. The OS will find a new Bluetooth HID Device.



(8) Press [**Finish**] button to finish the installation.



The Bluetooth mouse will be active.



*** Note:** If your bluetooth stack are WIDCOMM or IVT or TOSHIBA ,please go to MSI's WEB WWW.MSI.COM to find the steps.