

MSI BTMS (MS-6850)

Bluetooth Mouse

User's Guide

FCC Caution

1. The device complies with Part 15 of the FCC rules. Operation is subject to the following two conditions:
 - (1) This device may not cause harmful interference, and
 - (2) This device must accept any interference received, including interference that may cause undesired operation.
2. FCC RF Radiation Exposure Statement: The equipment complies with FCC RF radiation exposure limits set forth for an uncontrolled environment.
3. This Transmitter must not be co-located or operating in conjunction with any other antenna or transmitter.
4. Changes or modifications to this unit not expressly approved by the party responsible for compliance could void the user authority to operate the equipment.

Copyright Notice

The material in this document is the intellectual property of MICRO-STAR INTERNATIONAL. We take every care in the preparation of this document, but no guarantee is given as to the correctness of its contents. Our products are under continual improvement and we reserve the right to make changes without notice.

Trademarks

Microsoft Windows and Internet Explorer are registered trademarks or trademarks of Microsoft Corporation.

All brand names, icons, and trademarks used in this manual are the sole property of their respective owners.

Important Safety Precautions

Always read and follow these basic safety precautions carefully when handling any piece of electronic component.

1. Keep this User's Manual for future reference.
2. Keep this equipment away from humidity.
3. Lay this equipment on a reliable flat surface before setting it up.
4. The openings on the enclosure are for air convection hence protects the equipment from overheating.
5. All cautions and warnings on the equipment should be noted.
6. Never pour any liquid into the opening that could damage or cause electrical shock.
7. If any of the following situations arises, get the equipment checked by a service personnel:
 - Liquid has penetrated into the equipment
 - The equipment has been exposed to moisture
 - The equipment has not work well or you can not get it work according to User's Manual
 - The equipment has dropped and damaged
 - If the equipment has obvious sign of breakage
8. DO NOT LEAVE THIS EQUIPMENT IN AN ENVIRONMENT UNCONDITIONED, STORAGE TEMPERATURE ABOVE 60°C OR BELOW -20°C, IT MAY DAMAGE THE EQUIPMENT.

Revision History

Revision	History	Date
V 1.0	First Release	December 2003

1 Introduction

>>> 1.1 MSI BTMS (MS-6850) – Bluetooth Mouse

MSI BTMS (MS-6850) Bluetooth Mouse brings wireless convenience to your computer. You get optical precision control of your mouse from anywhere within 10 meters of your Media Center, desktop, notebook. For longer battery life, the BTMS features a 10-seconds idle power-down mode, with instant power-up on mouse use. An optional Bluetooth USB dongle is required if your computing device is not Bluetooth-enabled. The dongle enables you to connect up to seven other Bluetooth devices to your computer.

>>> 1.2 Features & Benefits

Cable Free

Bluetooth wireless technology without cable connection.

Battery Life Saving

The BTMS features a 10-seconds idle power-down mode, with instant power-up on mouse use for longer battery life.

Enhanced Grip

Feel more comfortable when holding the mouse.

Optical Tracking

Optical sensor up to 800 dpi.

>>> 1.3 Specifications

Hardware	Standards	Bluetooth v1.1 compliant & HID 1.0
	Data Rates	Up to 723Kbps
	Spread Spectrum	FHSS (Frequency Hopping Spread Spectrum)
	Frequency Range	2.4GHz ~ 2.4835GHz (2.4 GHz ISM Band)
	RF Channels	79-channel system for USA, Japan and Europe (except France, 23-channel system for France)
	Coverage	10 meters coverage area (in open space)
	Output Power	0 ~ 4dBm (transmission power)
	Sensor	Optical sensor maximum 800dpi
	Output Power Class	Bluetooth Power Class II
	Dimensions	11 x 6 x 3 cm
	Weight	76.8 g
	Environment	Operating temperature: -20°C ~ 65°C Storage temperature: -0°C ~ 40°C Humidity: 0 ~ 95%
	Software	OS Compliant
Certifications	EMC & Safety	United States: FCC Part 15 class, CE
	Others	BQB SIG listed

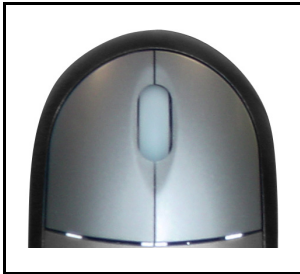
>>> 1.4 Package Contents

- One MSI BTMS Bluetooth Mouse.
- One Installation CD containing drivers, utilities, and manual files.
- One Quick Installation Guide.
- Two Alkaline Batteries.

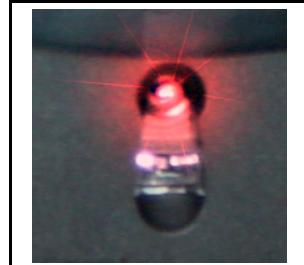
>>> 1.5 System Requirements

- One MSI BToes Bluetooth Dongle.
- Personal computers running Microsoft® Windows® 98SE/ME/2000/XP operating system.
- Minimum 5MB of available hard-disk space for driver and utilities installation.
- CD-ROM drive, double speed or higher.

>>> 1.6 Product View



**Scroll Wheel.
Two-Button Design.**



**Wireless
Optical.**



**Fashion Style.
Ergonomic Design.**

2

Using Your Bluetooth Mouse

>>> 2.1 Before You Begin

After installing the MSI Bluetooth USB Dongle and required software (refer to the User's Guide of the MSI BToes in the CD), you can connect and use your MSI Bluetooth Mouse by proceeding the instructions below. Remember that you have to install two AA batteries first.

To install the batteries:

1. Remove the battery cover.



2. Insert the batteries. (with correct polarity)



3. Replace the battery cover.



>>> 2.2 Connecting the Bluetooth Mouse

Step 1 : Press the **Connect** button on the bottom of the mouse.

***Tip:** When you click the connect button, the Bluetooth Mouse will set to discoverable for 3 minutes; meanwhile, it turns on the status LED (blue, near the scroll wheel) for debugging to show inquiry or page.*

Press this button

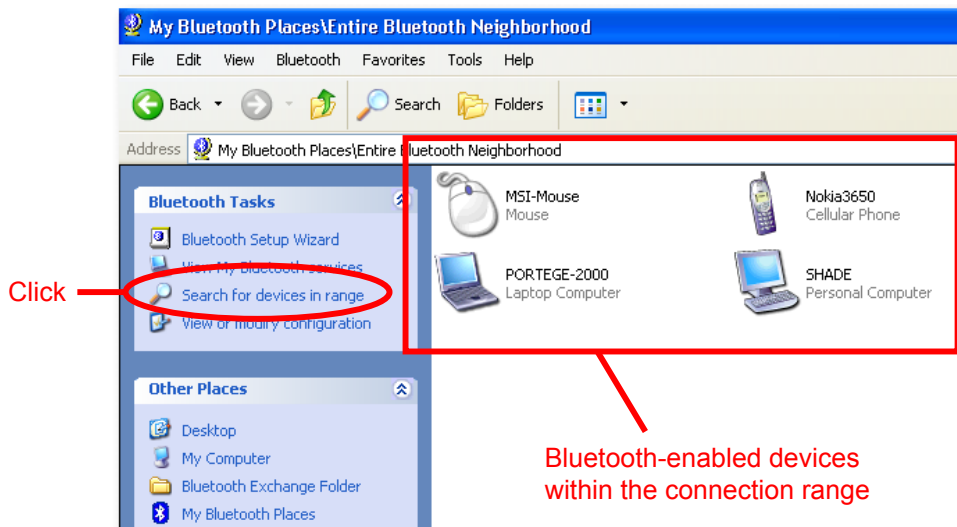


Step 2 : Right-click the Bluetooth icon at the taskbar, and then select **Explore My Bluetooth Places** from the short menu.

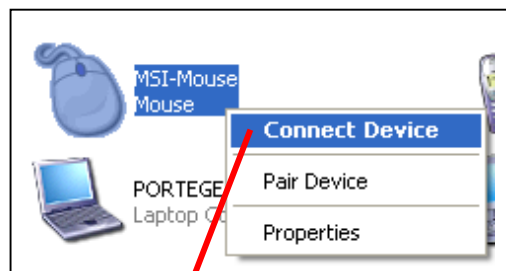


Right-click the Bluetooth icon

Step 3 : Click the **Search for device in range** option, and you will see the Bluetooth-enabled devices within the wireless connection range.

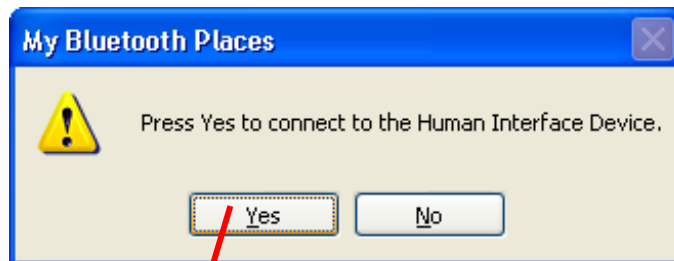


Right-click the MSI-Mouse icon and select the **Connect Device** option.



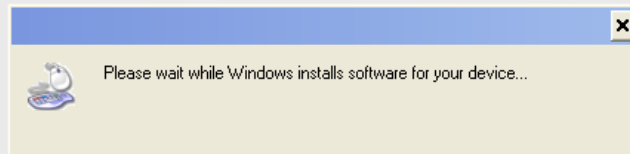
Select this option

Step 4 : A dialog box will appear as below. Click **Yes**.

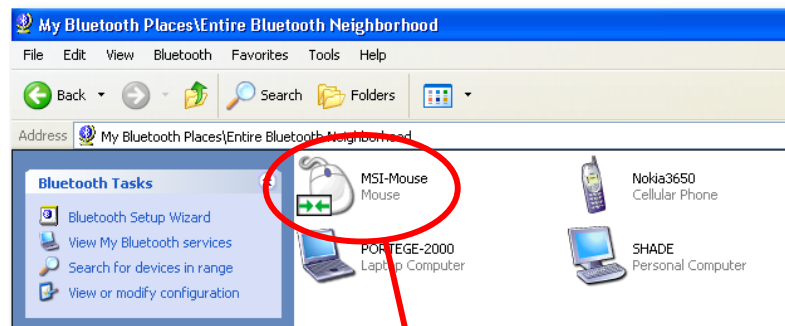


Click

Note: If you are the first time to connect a Bluetooth-enabled device, the operating system will install the driver at this step.



Step 5 : Now, you have completed the connection between the Bluetooth Dongle and mouse.



Connected

When the connection is built successfully, the Bluetooth icon changes to **GREEN** color.



Inner part of the icon becomes **GREEN**

>>> 2.3 Tips on Using the Bluetooth Mouse

For power saving purpose, the Bluetooth Mouse is designed with a "trace sensor" that enables the mouse to enter the Standby mode. This function allows the mouse to send signals to the receiver in a specific interval. If there are no signals sent or received in the timeout, the interval will become longer. For example, the mouse sends signals every 12.5ms in the first state, and then the interval may change to 75ms after 120 seconds, and then 250ms after 240 seconds, and so on. Finally, the mouse will enter the Standby mode (power off). If any data is received at any time (e.g. you click the left button on mouse), the mouse will be waked up and return to the first state immediately.