

About Hard Disk Drive

Your Notebook is equipped with a 2.5-inch IDE (Integrated Drive Electronics) hard disk drive. The hard disk drive is a storage device with much higher speed and larger capacity than other storage devices, such as the floppy disk drive and optical storage devices. Therefore, it is usually used to install the operating system and software applications.



info

1. To avoid unexpected data loss in your system, please backup your critical files regularly.
2. Do not turn off the Notebook when the Hard Disk In-use LED is on.
3. Do not remove or install the hard disk drive when the Notebook is turned on. The replacement of hard disk drive should be done by an authorized retailer or service representative.

Using the Optical Storage

Your Notebook is equipped with an optical storage device, which is known as the CD/DVD-ROM, CD-RW, DVD Combo and DVD Dual drive. The actual device installed in your Notebook depends on the model you purchased.

- n **CD-ROM Drive:** Allows you to read CD disks, including audio CDs and CD-R/RW disks.
- n **DVD-ROM Drive:** Allows you to read DVD disks and CD disks, including movie DVDs, audio CDs and CD-R/RW disks.
- n **CD-RW Drive:** Allows you to create the CD-R/RW disks containing your own contents.
- n **DVD Combo Drive:** A cost-effective solution that can work both as a DVD-ROM drive and a CD-RW drive.
- n **DVD Dual Drive:** A dual format recorder, allows you to record both the -R/RW and +R/RW formats.
- n **DVD Dual Layer:** It provides two individual recordable layers on a single sided DVD disc. To take advantage of dual layer technology when recording DVDs, you must use a dual layer enabled DVD burner and dual layer DVD media.



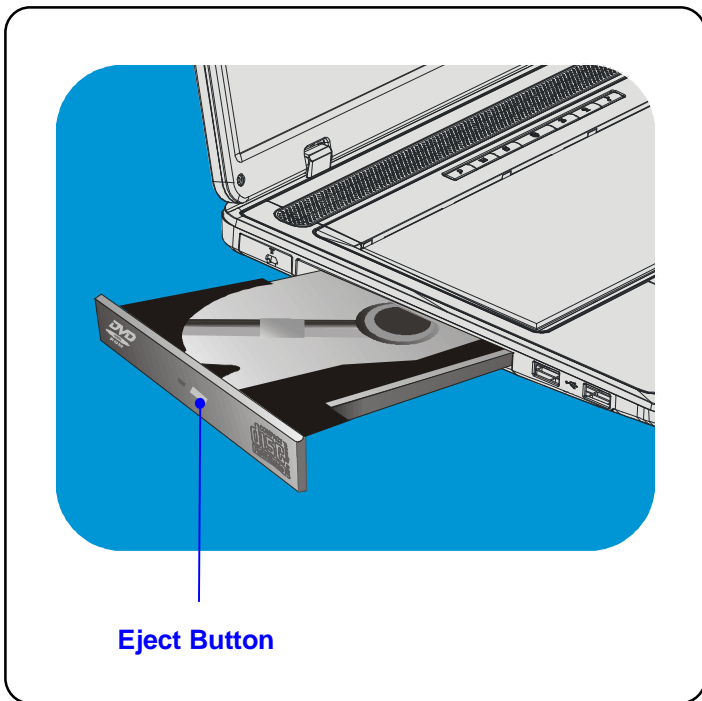
info

1. The optical storage devices are classified as a Class 1 Laser products. Use of controls or adjustments or performance of procedures other than those specified here in may result in hazardous radiation exposure.
2. Do not touch the lens inside the drive.

Inserting the CD

The following instruction describes the general procedure when operating the optical storage device, including the DVD-ROM drive.

1. Confirm that the Notebook is turned on.
2. Press the Eject Button on the drive's panel and the CD tray will slide out partially. Then, gently pull the tray out until fully extended.
3. Place your CD in the tray with its label facing up. Slightly press the center of the CD to secure it into place.
4. Push the tray back into the drive.



Removing the CD

1. Press the Eject Button on the drive's panel and the CD tray will slide out partially. Then, gently pull the tray out until fully extended.
2. Hold the CD by its edge with your fingers and lift it up from the tray.
3. Push the tray back into the drive.



info

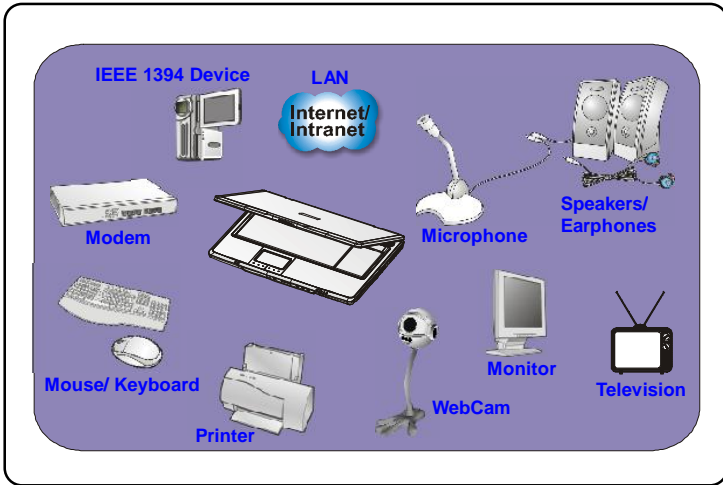
1. Confirm that the CD is placed correctly and securely in the tray before closing the tray.
2. Do not leave the CD tray open.

| | |
|------------------|----------------------------------|
| | Preface |
| Chapter 1 | General Introductions |
| Chapter 2 | Getting Started |
| Chapter 3 | Customizing this Notebook |
| Chapter 4 | BIOS Einstellung |



Connecting the External Devices

The I/O (input/output) ports on the Notebook allow you to connect peripheral devices.



Connecting the Peripheral Devices

Connecting the Mouse

You can connect a mouse to your Notebook through the PS/2 port or USB port.

If there is no PS/2 port available on your Notebook, but you only have mouse of PS/2 connector, please purchase a PS/2-USB connector first. To connect the mouse:

1. Turn on the Notebook and install the mouse driver.
2. Connect your mouse to the Notebook.
3. The Notebook may auto detect your mouse driver and enable the mouse function. If there is no detection of you mouse you can manually enable the mouse by going to **Start Menu à Control Panel à Add Hardware** to add the new device.

Connecting the Keyboard

You can connect a keyboard to your Notebook through the PS/2 port or USB port.

If there is no PS/2 port available on your Notebook, but you only have mouse of PS/2 connector, please purchase a PS/2-USB connector first. To connect the keyboard:

1. Turn on the Notebook and install the keyboard driver.
2. Connect your keyboard to the Notebook.
3. The Notebook may auto detect your keyboard driver and enable the keyboard function. If there is no detection of you keyboard you can manually enable the keyboard by going to **Start Menu à Control Panel à Add Hardware** to add the new device.

Connecting the WebCam

You can connect a WebCam to your Notebook through the USB port to connect the WebCam:

1. Turn on the Notebook and install the WebCam driver.
2. Connect your WebCam to the Notebook.
3. The Notebook may auto detect your WebCam driver and enable the WebCam function. If there is no detection of you WebCam you can manually enable the WebCam by going to **Start Menu à Control Panel à Add Hardware** to add the new device.

Connecting the Printer

If your printer has a USB interface, you can then use the USB port on the Notebook to connect the printer. The following instruction describes the general procedure to connect a printer:

1. Turn off the Notebook.
2. Connect one end of the printer cable to the Notebook's USB port and the other end to the printer.
3. Connect the power cord and turn on the printer.
4. Turn on the Notebook and the system will detect a new device. Install the required driver.

For further instructions, please refer to your printer's manual.

Connecting the External Monitor or TV

You can connect an external monitor to your Notebook through the DVI-I port for a larger view with higher resolution. To connect the monitor:

1. Make sure that the Notebook is turned off.
2. Plug the monitor's D-type connector into the Notebook's VGA port.
3. Connect the monitor's power cord and turn on the monitor.
4. Turn on the Notebook and the monitor should respond by default. If not, you can switch the display mode by pressing **[Fn]+[F2]**. Alternately, you can change the display mode by configuring the settings in **Display Properties** of Windows operating system.

Connecting the IEEE 1394 devices

The IEEE 1394 port of your Notebook is a next-generation serial bus that features a high-speed transfer rate and the connection of up to 63 devices, allowing you to connect many high-end peripheral devices and consumer electronic appliances, such as the DV (digital video camera). The IEEE 1394 standard interface supports "**plug-and-play**" technology, so that you can connect and remove the IEEE 1394 devices without turning off the Notebook.

To connect the IEEE 1394 device, simply connect the cable of the device to the IEEE 1394 port of your Notebook.

Connecting the Communication Devices

Using the LAN

The RJ-45 connector of the Notebook allows you to connect the LAN (local area network) devices, such as a hub, switch and gateway, to build a network connection. This built-in 10/100/1000 Base-T LAN module supports data transfer rate up to 1000Mbps.

For more instructions or detailed steps on connecting to the LAN, please ask your MIS staff or network manager for help.

Using the Modem

The built-in 56Kbps fax/data modem allows you to use a telephone line to communicate with others or to dial-up to connect the Internet.

For more instructions or detailed steps on dialing-up through the modem, please consult your MIS staff or Internet service provider (ISP) for help.



info

1. To reduce the risk of fire, use only No. 26 AWG or larger telecommunication lone cord.
2. You are strongly recommended to install the modem driver included in the software CD of your Notebook to take full advantage of the modem feature.

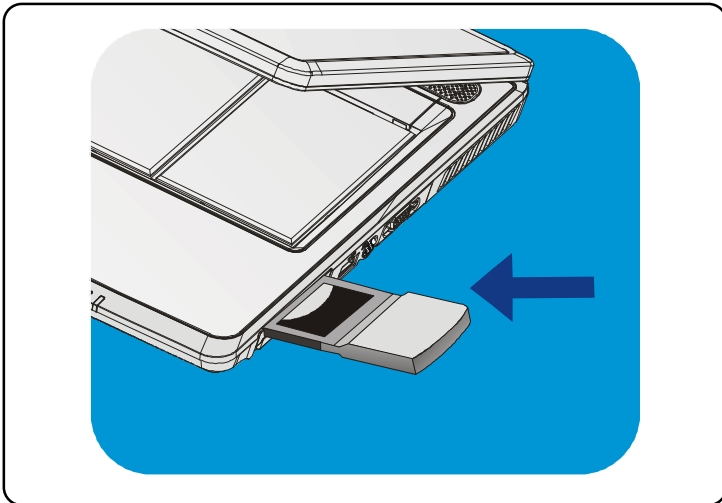
PC Card Installation

The PC card slot of your Notebook allows you to install comprehensive Type-II PC cards that support various functions for your necessary, including the LAN/WLAN card, modem card and memory card.

The following instruction provides you with a basic installation for the PC card, including how to install and remove it. For more information, please refer to the manual of your PC card.

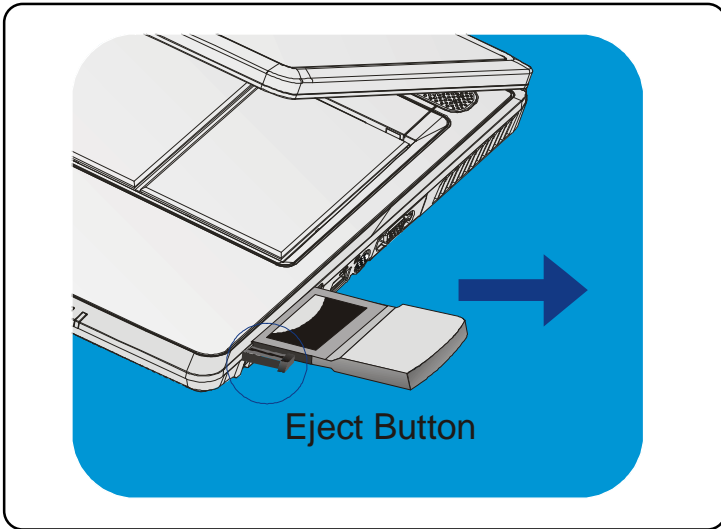
Installing the PC card

1. Locate the PC card slot on your notebook Notebook. If there is the dummy card in the slot, remove it first.
2. Insert the PC card into the slot (usually with its label facing up) and push it until it is firmly seated.



Removing the PC card

1. Press the Eject Button to make it stretch out.
2. Push the Eject Button and the PC card will slide out. Pull it out of the slot.



info

1. Do not hold the "golden finger" when installing the PC card; otherwise, it may cause interference or damage to the PC card.
2. Before removing the PC card, you should stop the device in Windows operating system.

Express PC Card Installation

This computer provides an Express Card slot. The new Express Card interface is smaller and faster than PC Card interface. The Express Card technology takes advantage of the scalable, high-bandwidth serial PCI Express and USB 2.0 interfaces.

The following instruction provides you with a basic installation for the Express Card, including how to install and remove it. For more information, please refer to the manual of your Express Card.


Installing the Express Card

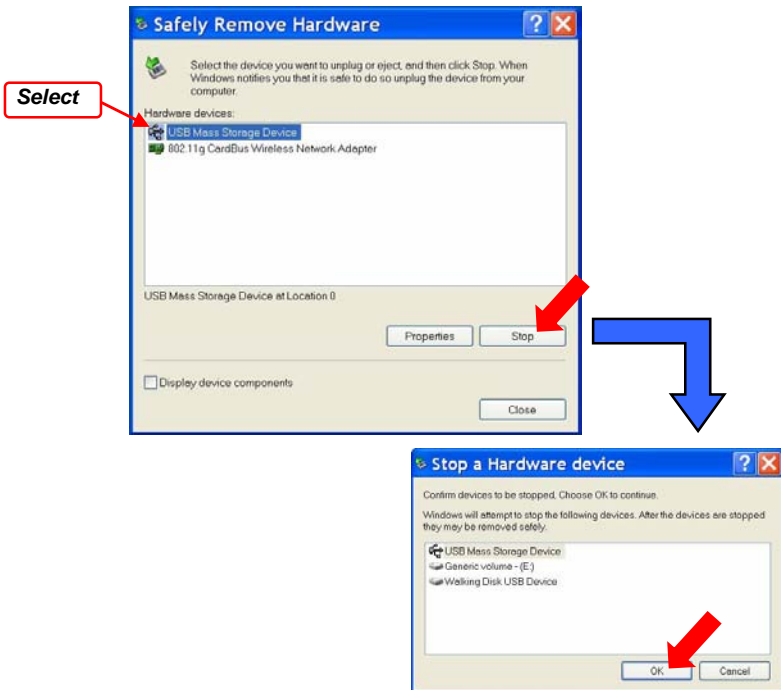
1. Locate the Express Card slot on your notebook. If there is the dummy card in the slot, remove it first.
2. Insert the Express Card into the slot (usually with its label facing up) and push it until it is firmly seated.

Removing the Express Card

1. Press the edge of the Express card to make the card stretch out a bit.
2. Pull the Express card out of the slot.
3. Reattach the dummy card back to the slot.

Safely Remove Hardware

If you connect any peripheral device to your system, the **Safely Remove Hardware** icon () will appear on the taskbar. Double-click the icon to bring up the Safely Remove Hardware dialog box. You can see all connected peripheral devices here. If you want to remove any of the devices, move the cursor to the device and click **Stop**.



| | | |
|------------------|----------------------------------|---|
| | Preface | ↓ |
| Chapter 1 | General Introductions | |
| Chapter 2 | Getting Started | |
| Chapter 3 | Customizing this Notebook | |
| Chapter 4 | BIOS setup | |



About BIOS Setup

When to Use BIOS Setup?

You may need to run the BIOS Setup when:

- w An error message appears on the screen during the system booting up and requests you to run SETUP.
- w You want to change the default settings for customized features.
- w You want to reload the default BIOS settings.

How to Run BIOS Setup?

To run the BIOS Setup Utility, turn on the Notebook and press the [Del] key during the POST procedure.

If the message disappears before you respond and you still wish to enter Setup, restart the system by turning it OFF and ON, or simultaneously pressing [Ctrl]+[Alt]+[Delete] keys to restart.





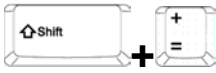

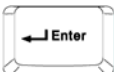





info

The screen snaps and setting options in this chapter are for your references only. The actual setting screens and options on your Notebook may be different because of BIOS update.

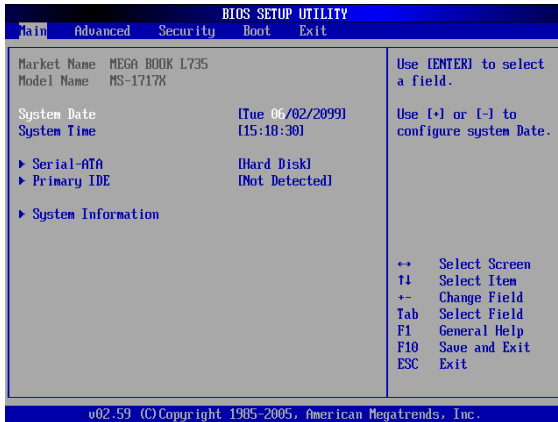
Control Keys

You can use only the keyboard to control the cursor in the BIOS Setup Utility.

| | |
|---|--|
|  | Press left arrow to select one menu title. |
|  | Press right arrow to select one menu title. |
|  | Press up arrow to select one item under the menu title. |
|  | Press down arrow to select one item under the menu title. |
|  | Increase the setting value or make changes. |
|  | Decrease the setting value or make changes. |
|  | <ol style="list-style-type: none"> 1) Open the selected item to change setting options. 2) Bring up a sub-menu when available. |
|  | In some items, press this key to change setting field. |
|  | Bring up help screen providing the information of control keys. |
|  | <ol style="list-style-type: none"> 1) Exit the BIOS Setup Utility. 2) Return to the previous screen in a sub-menu. |

BIOS Setup Menu

Once you enter the BIOS Setup Utility, the Main menu will appear on the screen. The Main menu displays the system information, including the basic configuration.



Main menu

Show System Overview information about BIOS version, CPU features, Memory size and setting of System Time and Date.

Advanced menu

Configure IDE and USB settings.

Security menu

Install or clear Supervisor's and User's Password settings.

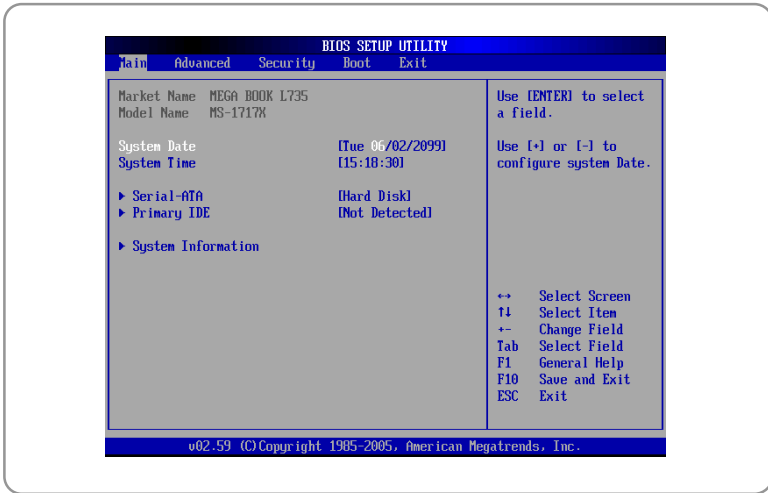
Boot menu

Set up Boot Type and Boot Sequence.

Exit menu

Choose decided status before leaving the BIOS menu.

Main menu



System Overview

System Overview will show you BIOS version and other information about its build date and update notes. Following is CPU's information about its Type and Speed.

System Time

This item allows you to set the system time. The system clock will go on no matter you shut down the PC or get into sleep mode. The set format is [hour:minute:second].

System Date

This item allows you to set the system date. The date format is [day:month:date:year].

Day Day of the week, from Sun to Sat, which is determined by BIOS (read-only).

Month The month from 01 (January) to 12 (December).

Date The date from 01 to 31.

Year The year can be adjusted by users.

Primary IDE

The item displays the types of the primary IDE devices installed in the Notebook. Press [Enter] to bring up a window showing the detailed information of the device, including the device name, vendor, LBA mode, PIO mode and more.

System Information

This item indicates the information of firmware, processor, and system memory.

Advanced menu



Advanced Settings

PowerNow

This item allows you to enable or disable PowerNow technology. When set to Enabled, the system always operates in a conserve power mode. If you want optimize the processor, set this item to Disabled, so that the processor's speed will vary depending on the use of your operating system and applications. Default setting is set to **Enabled**.

PCI Latency Timer

Value in units of PCI clocks for PCI device latency timer register.

Legacy USB Support

If you want to use USB device, such as mouse, keyboard, portable disk, in DOS system or boot your system by USB device, you should enable this function by selecting **Enabled**.

Boot menu



Boot Settings Configuration

Configure settings during system boot.

Boot Device Priority --1st, 2nd, and 3rd Boot Device

The three items allow you to set the sequence of boot devices where BIOS attempts to load the disk operating system.

Security menu



Security Settings

Change Supervisor/User Password

When you select the function, a message box will appear on the screen as below:

Enter New Password

Type the password *you* want, up to six characters in length and press [Enter]. The password typed now will replace any previously set password from CMOS memory. You may also press [ESC] to abort the selection and not enter a password.

When the Supervisor Password is set, the new item **User Access Level** and **Password Check** will be added in the menu. You can make further settings of access right in the **User Access Level** item. Setting options: **No Access, View Only, Limited** and **Full Access**. The Password Check item is used to specify the type of BIOS password protection that is implemented. Settings are described below:

| | |
|---------------|--|
| Setup | The password prompt appears only when end users try to run Setup. |
| Always | A password prompt appears every time when the Notebook is powered on or when end users try to run Setup. |

To clear a set password, just press **[Enter]** when you are prompted to enter the password. A message box will show up confirming the password will be disabled. Once the password is disabled, the system will boot and you can enter Setup without entering any password.

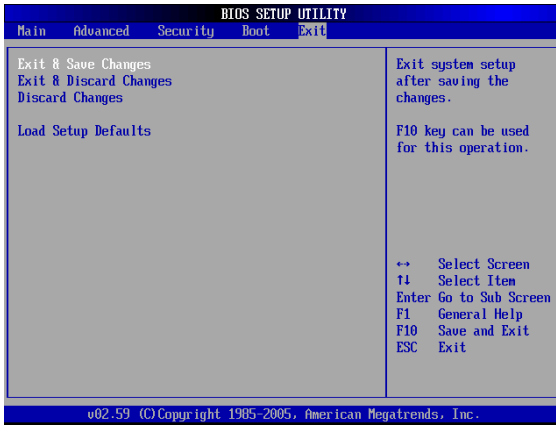


info

About Supervisor Password and User Password

Supervisor Password allows the user to enter and change the settings of the setup menu; User Password only allows the user to enter the setup menu, but do not have the right to make changes.

Exit menu



Exit & Save Changes

Save the changes you have made and exit the utility.

Exit & Discard Changes

Exit the utility without saving the changes you have made.

Discard Changes

Abandon your changes and reload the previous configuration before running the utility.

Load Setup Defaults

Select this item to load the default settings for optimal system performance.



FCC Caution

1. The device complies with Part 15 of the FCC rules. Operation is subject to the following two conditions:
 - (1) This device may not cause harmful interference, and
 - (2) This device must accept any interference received, including interference that may cause undesired operation.
2. FCC RF Radiation Exposure Statement: The equipment complies with FCC RF radiation exposure limits set forth for an uncontrolled environment. This equipment should be installed and operated with a minimum distance of 20 centimeters between the radiator and your body.
3. This Transmitter must not be co-located or operating in conjunction with any other antenna or transmitter.
4. Changes or modifications to this unit not expressly approved by the party responsible for compliance could void the user authority to operate the equipment.

FCC Statement

This device is intended only for OEM integrators under the following

- 1) The antenna must be installed such that 20 cm is maintained between antenna and users, and
- 2) The transmitter module may not be co-located with any other transmitter or antenna.

As long as 2 conditions above are met, further transmitter test will not required. However, the OEM integrator is still responsible for testing end-product for any additional compliance requirements required with module installed (for example, digital device emissions, PC peripheral requirements, etc.).

Important Note

In the event that these conditions can not be example certain laptop configurations or co-location with another transmitter), then the FCC authorization is no longer considered valid the FCC ID can not be used on the final product. In these circumstances, OEM integrator will be responsible for re-evaluating the end product (including the transmitter) and obtaining a separate FCC authorization.

End Product Labeling

This transmitter module is authorized only for use in device where antenna may be installed such that 20 cm may be maintained between antenna and users (for example access points, routers, wireless ADSL and similar equipment). The final end product must be labeled in a area with the following: “Contains TX FCC ID: I4L-MS6855C”.

Manual Information for End Users

The end user must not have manual instructions to remove or install device. The user manual for end users must include the following information in a prominent location: “IMPORTANT NOTE: To comply with FCC RF exposure compliance requirements, the antenna used for this transmitter must be installed to provide a separation distance of at least 20 cm from all persons and must not be co-located operating in conjunction with any other antenna or transmitter.” as a result of e-mail transmission.”

Important Safety Precautions

Always read and follow these basic safety precautions carefully when handling any piece of electronic component.

1. Keep this *User's Guide* for future reference.
2. Keep this equipment away from humidity.
3. Lay this equipment on a reliable flat surface before setting it up.
4. The openings on the enclosure are for air convection hence protects the equipment from overheating.
5. All cautions and warnings on the equipment should be noted.
6. Never pour any liquid into the opening that could damage or cause electrical shock.
7. If any of the following situations arises, get the equipment checked by a service personnel:
 - ❶ Liquid has penetrated into the equipment
 - ❷ The equipment has been exposed to moisture
 - ❸ The equipment has not work well or you can not get it work according to User's Manual
 - ❹ The equipment has dropped and damaged
 - ❺ If the equipment has obvious sign of breakage
8. DO NOT LEAVE THIS EQUIPMENT IN AN ENVIRONMENT UNCONDITIONED, STORAGE TEMPERATURE ABOVE 60°C OR BELOW -20°C, IT MAY DAMAGE THE EQUIPMENT.

1

Introduction

>>> 1.1 MP54GBT3 (MS-6855C) - Wireless 11g + Bluetooth Combo MiniPCI Card

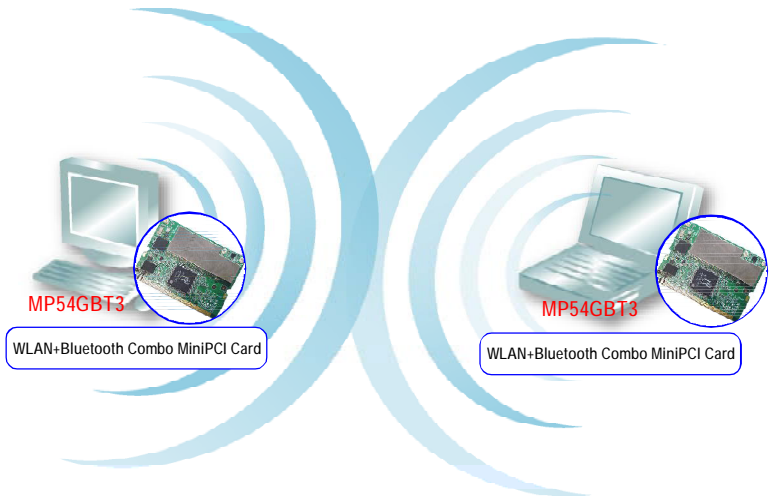
MSI MP54GBT3, the Wireless 11g + Bluetooth Combo miniPCI Card, is a **Type IIIB** card, which can be used to integrate with such systems as notebook, mini-barebone, PDA, portable PC. With MSI MP54GBT3 embedded inside, a system could provide users with the ability and flexibility to connect up to Internet wirelessly via **802.11g** with speed up to 54Mbps, and to link with peripherals wirelessly through **Bluetooth™ v2.0** and advanced **EDR (Enhanced Data Rate)** technology. **Bluetooth™ v2.0** technology increases the data rate of **Bluetooth™ v1.1/1.2** from 1.0Mbps to 2.1Mbps.

MSI MP54GBT3 is taking advantage of leading technologies from Ralink and CSR. It addresses the co-existence issues in PAN (Personal Area Network) and WLAN (Wireless Local Area Network) markets by providing true simultaneous connectivity while deploying IEEE 802.11g and Bluetooth v2.0. Along with this combo solution, a system installed with a single card is able to offer dual mode capability of WiFi and Bluetooth™. It will benefit system vendors in miniaturization of system dimension and BOM cost reduction, as well as also make users happy with the all-in-one functionality.

>>> 1.2 How MP54GBT3 Works

1.2.1 In WLAN Environment

- **Ad-hoc Mode** : An Ad-hoc network is a local area network or other small network, especially one with wireless or temporary plug-in connections, in which some of the network devices are part of the network only for the duration of a communications session. Users in the network can share files, print to a shared printer, and access the Internet with a shared modem. In this kind of network, new devices can be quickly added; however, users can only communicate with other wireless LAN computers that are in this wireless LAN workgroup, and are within range.



- **Infrastructure Mode :** The difference between Infrastructure network and Ad-hoc network is that the former one includes an Access Point. In an Infrastructure network, the Access Point can manage the bandwidth to maximize bandwidth utilization. Additionally, the Access Point enables users on a wireless LAN to access an existing wired network, allowing wireless users to take advantage of the wired networks resources, such as Internet, email, file transfer, and printer sharing. The scale and range of the Infrastructure networking are larger and wider than that of the Ad-hoc networking.



1.2.2 In Bluetooth Connection

The term “Bluetooth” refers to a worldwide standard for the wireless exchange of data between two devices. In order to exchange data, two Bluetooth devices must establish a connection. Before a connection is established, one device must request a connection with another. The second device accepts (or rejects) the connection. The originator of the request is known as the client. The device that accepts (or rejects) the request is known as the server. Many Bluetooth devices can act as both client and server. Every Bluetooth device that provides a service must be prepared to respond to a connection request. Bluetooth software is always running in the background on the server, ready to respond to connection requests.



>>> 1.3 Specifications

| | | |
|-------------------------------|----------------------|--|
| Hardware Specification | Form Factor | 32-bit Type IIIB |
| | Operation voltage | 3.3V |
| | Antenna Connector | Two antenna connectors |
| | Operating System | Microsoft® Windows® 98SE/ME/2000 /XP/XP-64bit |
| | Environmental | - Operating Temperature: 0 ~ 55°C - Operating Humidity: 10 ~ 90%, non-condensing |
| | Dimensions (WxDxH) | 59.75 x 44.6 x 3.5mm |
| WLAN Specification | Network Standard | IEEE 802.11; IEEE 802.11b/g |
| | Frequency Band | 2.412-2.484 GHz |
| | Data Rate | IEEE 802.11g (auto-fallback): - OFDM: 54, 48, 36, 24, 18, 12, 9 and 6Mbps IEEE 802.11b (auto-fallback): - CCK: 11, 5.5 Mbps - DQPSK: 2 Mbps - DBPSK: 1 Mbps |
| | Media Access Control | CSMA/CA with ACK |
| | Transmission | DSSS (direct sequential spread spectrum) |
| | Network Architecture | Ad-Hoc Mode (Peer-to-Peer); Infrastructure Mode |
| | Antenna Type | Two antenna connectors support |
| | Power Consumption | TX peak: 310mA RX peak: 250mA Standby mode: 150mA |

| | |
|---|--|
| Channel | <p>IEEE 802.11g: Ch. 1-11 – N. America Ch. 1-13 – Japan Ch. 1-13– Europe ETSI Ch. 10-11 – Spain Ch. 10-13 – France</p> <p>IEEE 802.11b: Ch. 1-11 – N. America Ch. 1-13 – Japan Ch. 1-13– Europe ETSI Ch. 10-11 – Spain Ch. 10-13 – France</p> |
| Output Power | <p>Output Power(Before Antenna)</p> <p>11b: 17dBm+/-2 Max</p> <p>11g: 14.5dBm+/-1 Max</p> |
| Receiver Sensitivity (Average Value) | <p>54 Mbps OFDM @ 10% PER = -65 dBm 48 Mbps OFDM @ 10% PER = -66 dBm 36 Mbps OFDM @ 10% PER = -70 dBm 24 Mbps OFDM @ 10% PER = -74 dBm 18 Mbps OFDM @ 10% PER = -77 dBm 12 Mbps OFDM @ 10% PER = -79 dBm 11 Mbps CCK @ 8% PER = -80 dBm 9 Mbps OFDM @ 10% PER = -81 dBm 6 Mbps OFDM @ 10% PER = -82 dBm 5.5 Mbps CCK @ 8% PER = -82 dBm 2 Mbps QPSK @ 8% PER = -83 dBm 1 Mbps BPSK @ 8% PER = -83 dBm</p> |

| | | |
|--------------------------------|----------------------|---|
| Bluetooth Specification | Network Standard | Bluetooth v2.0 (Class II) +EDR |
| | Frequency Band | 2.4-2.483 GHz |
| | Data Rate | Up to 2.1Mbps |
| | Channel | 79 sub-channels |
| | Transmission | FHSS (Frequency Hopping Spread Spectrum) |
| | Modulation | GFSK |
| | Antenna Type | One antenna connector support |
| | Power Consumption | 66 mA (maximum, continuous TX) |
| | Max. Output Power | Up to 2dBm |
| | Max. Input Level | 0dBm |
| | Receiver Sensitivity | -70dBm @ BER<0.1% |
| | Range | Up to 10 m |
| | Physical Links | Support ACL link |
| | Network Capabilities | Support piconet point-to-point and point-to-multipoint connections |
| | Link Manager | 3-slot Packets: Yes 5-slot Packets: Yes Slot Offset: Yes Timing Accuracy: Yes Switch: Yes Hold Mode: Yes Sniff Mode: Yes Test Mode: Yes Park Mode: Yes RSSI: Yes Power Control: Yes Authentication: Yes Encryption: Yes |

>>> 1.4 System Requirements

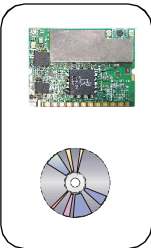
Before installing MP54GBT3, your PC should meet the following items:



- One desktop/notebook PC with an available MiniPCI slot.
- Windows® 98SE/ME/2000/XP/XP 64bit operating system.
- Minimum 5MB free disk space for installing the driver and utilities.
- One CD-ROM drive, double speed or higher.

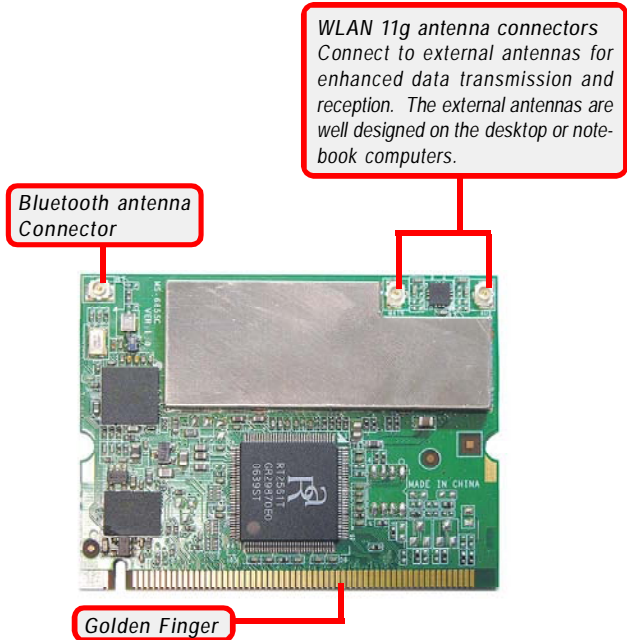
>>> 1.5 Package Contents

Unpack the package and check all the items carefully. If any item contained is damaged or missing, please contact your local dealer as soon as possible. Also, keep the box and packing materials in case you need to ship the unit in the future. The package should contain the following items:



- One Wireless 11g + Bluetooth Combo MiniPCI Card.
- One Installation CD-ROM including drivers, utilities, and the manual files.

>>> 1.6 Product View



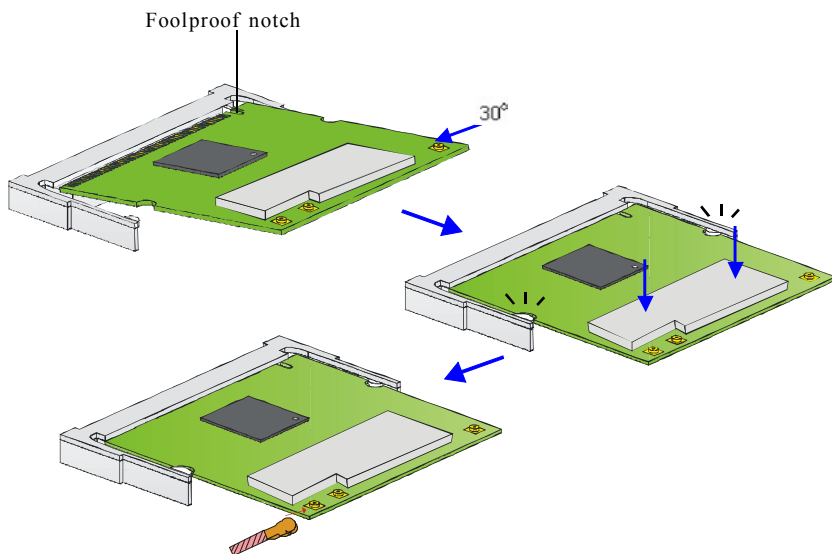
2

Hardware Installation

The following diagrams provide you a basic installation for your MP54GBT3. The instruction below is suitable for most computers with MiniPCI slot. For more information about the MiniPCI module, please refer to your computer's manual.

🔧 Installing MP54GBT3:

1. Locate the MiniPCI slot on the mainboard. Place your MP54GBT3 over the MiniPCI slot (at an angle of 30 degrees). Then, gently insert it into the slot until the golden finger of the card gets fully inserted.
2. Press down the card, and the retaining clips (on two sides of the slot) will lock onto the notches of the card.
3. Connect the antenna's cable to the connector on the card.

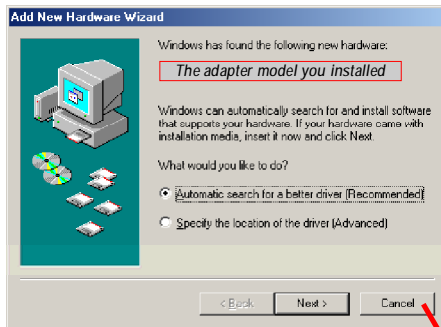


3

Software Installation

This chapter describes the procedures of installing the driver and utility. Follow the instruction step by step to finish the installation. If you use Windows® 98SE/ME, please prepare the Windows® Setup CD at hand before installing the driver; because the system will ask you to insert the Setup CD to copy files during the installation.

Please **NOTE** that the MP54GBT3 should be installed into your computer before installing the driver and utility. Then, the operating system will detect a new device and start to configure the new device. Click *Cancel* here to start installation from the InstallShield Wizard.



Click

Tip: The MP54GBT3 adapter should be installed into your PC before installing the driver and utility.

STEP 1

Insert the software CD into your CD-ROM drive, and the Setup program should launch automatically.

If the Autorun program doesn't launch automatically, click **Start** at the taskbar and select **Run....** Type *E:\setup.exe* (where *E* is your CD-drive) in the Open box and click *OK* to launch the Setup program manually.

The main screen of Setup program will appear as below.

**STEP 2**

1. Click the Install WLAN Driver button.
2. The welcome screen of InstallShield Wizard appears. Click *Next*.
3. Read and accept the License Agreement; then, click *Next*.
4. Click *Install* and the program will copy the necessary files to the system. The progress indicator shows the installing status.
5. Click *Finish* when the WLAN driver installation is completed.

STEP 3

1. Click the Install Bluetooth Driver button.
2. The welcome screen of InstallShield Wizard appears. Click *Next*.
3. Read and accept the License Agreement; then, click *Next*.
4. Click *Next* to install the driver in the default destination folder.
5. Click *Install* and the program will copy the necessary files to the system. The progress indicator shows the installing status.
6. Click *Finish* when the bluetooth driver installation is completed.

STEP 4

Click the Exit button.

The Wireless LAN icon and Bluetooth icon will appear in the status bar.

