

Table of Content

1.	ENGLISH	1-1
2.	DEUTSCH	2-1
3.	FRANÇAIS	3-1
4.	ESPAÑOL	4-1
5.	ITALIANO	5-1
6.	NEDERLANDS	6-1
7.	ČESKY	7-1
8.	PORTUGUÊS	8-1
9.	POLSKI	9-1
10.	РУССКИЙ	10-1
11.	TÜRKÇE	11-1
12.	العربية	12-1
13.	فارسي	13-1
14.	ไทย	14-1
15.	简体中文	15-1
16.	繁體中文	16-1

FCC Caution

1. *The device complies with Part 15 of the FCC rules. Operation is subject to the following two conditions:
(1) This device may not cause harmful interference, and
(2) This device must accept any interference received, including interference that may cause undesired operation.*
2. *FCC RF Radiation Exposure Statement: The equipment complies with FCC RF radiation exposure limits set forth for an uncontrolled environment. This equipment should be installed and operated with a minimum distance of 20 centimeters between the radiator and your body.*
3. *This Transmitter must not be co-located or operating in conjunction with any other antenna or transmitter.*
4. *Changes or modifications to this unit not expressly approved by the party responsible for compliance could void the user authority to operate the equipment.*

FCC Statement

This device is intended only for OEM integrators under the following

- 1) The antenna must be installed such that 20 cm is maintained between antenna and users, and
- 2) The transmitter module may not be co-located with any other transmitter or antenna.

As long as 2 conditions above are met, further transmitter test will not required. However, the OEM integrator is still responsible for testing end-product for any additional compliance requirements required with module installed (for example, digital device emissions, PC peripheral requirements, etc.).

Important Note

In the event that these conditions can not be example certain laptop configurations or co-location with another transmitter), then the FCC authorization is no longer considered valid the FCC ID can not be used on the final product. In these circumstances, OEM integrator will be responsible for re-evaluating the end product (including the transmitter) and obtaining a separate FCC authorization.

End Product Labeling

This transmitter module is authorized only for use in device where antenna may be installed such that 20 cm may be maintained between antenna and users (for example access points, routers, wireless ADSL and similar equipment). The final end product must be labeled in a area with the following: “Contains TX FCC ID: G14L-MS6868H”.

Manual Information for End Users

The end user must not have manual instructions to remove or install device. The user manual for end users must include the following information in a prominent location: “IMPORTANT NOTE: To comply with FCC RF exposure compliance requirements, the antenna used for this transmitter must be installed to provide a separation distance of at least 20 cm from all persons and must not be co-located operating in conjunction with any other antenna or transmitter. as a result of e-mail transmission.”

Important Safety Precautions

Always read and follow these basic safety precautions carefully when handling any piece of electronic component.

1. Keep this User Guide for future reference.
 2. Keep this equipment away from humidity.
 3. Lay this equipment on a reliable flat surface before setting it up.
 4. The openings on the enclosure are for air convection hence protects the equipment from overheating.
 5. All cautions and warnings on the equipment should be noted.
 6. Never pour any liquid into the opening that could damage or cause electrical shock.
 7. If any of the following situations arises, get the equipment checked by a service personnel:
 - ❑ Liquid has penetrated into the equipment
 - ❑ The equipment has been exposed to moisture
 - ❑ The equipment has not work well or you can not get it work according to User Manual
 - ❑ The equipment has dropped and damaged
 - ❑ If the equipment has obvious sign of breakage
 8. **DO NOT LEAVE THIS EQUIPMENT IN AN ENVIRONMENT UNCONDITIONED, STORAGE TEMPERATURE ABOVE 60°C OR BELOW -20°C, IT MAY DAMAGE THE EQUIPMENT.**
-



Hiermit erklärt **Micro Star International CO., LTD** dass sich dieses Produkt in Übereinstimmung mit den grundlegenden Anforderungen und den anderen relevanten Vorschriften der Richtlinie 1999/5/EG befindet.

Die Konformitätserklärung kann auf folgender website eingesehen werden:

http://www.msi-technology.de/support/dl_man.php?Prod_Typ=9

Hereby, **Micro Star International CO., LTD** declares that this device is in compliance with the essential requirements and other relevant provisions of Directive 1999/5/EC.

The respective Declaration of conformity can be found online:

http://www.msi-technology.de/support/dl_man.php?Prod_Typ=9

Europe: Frequencies: 2.400 – 2.4835 GHz, 79 channels

France: Outdoor use limited to 10 mW within the band; Frequencies: 2.454 – 2.4835 GHz, 23 channels

Italy: If used outside of own premises, general authorisation is required

Notified Countries:

Germany, UK, Netherlands, Belgium, Norway, Sweden, Denmark, Finland, France, Italy, Spain, Austria, Iceland, Ireland, Portugal, Greece, Luxemburg and Switzerland

Bestimmungsgemäße Verwendung:

Diese Produkt wird an den USB-Anschluß des PC (oder Hub) angeschlossen. Der USB Dongle verbindet PCs über eine Funkverbindung. Es kann auch eine Funkverbindung zu anderen geeigneten Bluetooth-Geräten hergestellt werden.

Prescribed use:

This is prepared to be connected to any USB-Port of PCs (or Hubs). The USB Dongle sets up a radio link between to PCs. Additional it is possible to link to any other Bluetooth device which stick to the Bluetooth requirement.

Hinweise zur Reichweite:

Der Abstand zwischen Sender und Empfänger (von einem Bluetooth-Gerät zu einem Bluetooth-Gerät) hängt stark von der Einsatzumgebung ab. Wände, Betonboden (Eisen), beschichtete Fensterscheiben, Fahrzeug-Karosserie, etc..

Weitere Beeinflussungen:

- Hochfrequenzaussendungen jeder Art
- Gebäude, Bäume, etc.
- Heizkörper, Stahlbeton, etc.
- offen betriebene Computer, etc.
- Mikrowellenherde, etc,

Die Kommunikation zwischen unterschiedlichen Bluetooth-Geräten ist von der jeweiligen Software und dem entsprechenden Versionsstand abhängig

Operating range:

devices varies depending the specific environment. Walls, concrete floor (iron), laminated windows, vehicle-body, etc..

The transmission range between different Bluetooth

More electromagnetic interferences:

- high frequency emission of any kind,
- Buildings, trees, etc.
- Heaters, ferroconcrete, etc.
- open computer systems, etc.
- Microwave oven, etc,

Communication (exchange data) is dependent on the software concerned the Bluetooth devices.

WEEE Statement

ENGLISH



To protect the global environment and as an environmentalist, MSI must remind you that...

Under the European Union ("EU") Directive on Waste Electrical and Electronic Equipment, Directive 2002/96/EC, which takes effect on August 13, 2005, products of "electrical and electronic equipment" cannot be discarded as municipal waste anymore and manufacturers of covered electronic equipment will be obligated to take back such products at the end of their useful life. MSI will comply with the product take back requirements at the end of life of MSI-branded products that are sold into the EU. You can return these products to local collection points.

DEUTSCH

Hinweis von MSI zur Erhaltung und Schutz unserer Umwelt

Gemäß der Richtlinie 2002/96/EG über Elektro- und Elektronik-Altgeräte dürfen Elektro- und Elektronik-Altgeräte nicht mehr als kommunale Abfälle entsorgt werden. MSI hat europaweit verschiedene Sammel- und Recyclingunternehmen beauftragt, die in die Europäische Union in Verkehr gebrachten Produkte, am Ende seines Lebenszyklus zurückzunehmen. Bitte entsorgen Sie dieses Produkt zum gegebenen Zeitpunkt ausschliesslich an einer lokalen Altgerätesammelstelle in Ihrer Nähe.

FRANÇAIS

En tant qu'écologiste et afin de protéger l'environnement, MSI tient à rappeler ceci...

Au sujet de la directive européenne (EU) relative aux déchets des équipements électriques et électroniques, directive 2002/96/EC, prenant effet le 13 août 2005, que les produits électriques et électroniques ne peuvent être déposés dans les décharges ou tout simplement mis à la poubelle. Les fabricants de ces équipements seront obligés de récupérer certains produits en fin de vie. MSI prendra en compte cette exigence relative au retour des produits en fin de vie au sein de la communauté européenne. Par conséquent vous pouvez retourner localement ces matériels dans les points de collecte.

РУССКИЙ

Компания MSI предпринимает следующие действия по защите окружающей среды, чтобы уменьшить вред, причиняемый ей...

В соответствии с директивой Европейского Союза (ЕС) по предотвращению загрязнения окружающей среды ненормативными электрическими и электронными приборами директива WEEE 2002/96/ЕС, вступающей в силу 13 августа 2005 года, изделия, относящиеся к электрическим и электронным приборам, не могут рассматриваться как бытовой мусор, подлежащий производству и переработке по месту строительства завода, вместо обязанности принимать и перерабатывать их по окончании срока службы. MSI обязуется соблюдать требования по приему, производству, утилизации и переработке изделий MSI на территории ЕС, в переработку по окончании срока службы. Вы можете вернуть эти изделия в специализированные пункты приема.

ESPAÑOL

MSI como empresa comprometida con la protección del medio ambiente, recomienda:

Bajo la directiva 2002/96/EC de la Unión Europea en materia de desechos y/o equipos electrónicos, con fecha de rigor desde el 13 de agosto de 2005, los productos clasificados como "eléctricos y equipos electrónicos" no pueden ser depositados en los contenedores habituales de su municipio, los fabricantes de equipos electrónicos, están obligados a hacerse cargo de dichos productos al termino de su período de vida. MSI estará comprometido con los términos de recogida de sus productos vendidos en la Unión Europea al final de su periodo de vida. Usted debe depositar estos productos en el punto limpio establecido por el ayuntamiento de su localidad o entregar a una empresa autorizada para la recogida de estos residuos.

NEDERLANDS

Om het milieu te beschermen, wil MSI u eraan herinneren dat....

De richtlijn van de Europese Unie (EU) met betrekking tot Vervuiling van Elektrische en Electronische producten (2002/96/EC), die op 13 Augustus 2005 in zal gaan kunnen niet meer beschouwd worden als vervuiling.

Fabrikanten van dit soort producten worden verplicht om producten retour te nemen aan het eind van hun levenscyclus. MSI zal overeenkomstig de richtlijn handelen voor de producten die de merknaam MSI dragen en verkocht zijn in de EU. Deze goederen kunnen geretourneerd worden op lokale inzamelingspunten.

SRPSKI

Da bi zaštitili prirodnu sredinu, i kao preduzeće koje vodi računa o okolini i prirodnoj sredini, MSI mora da vas podesti da...

Po Direktivi Evropske unije ("EU") o odbačenju elektonskoj i električnoj opremi, Direktiva 2002/96/EC, koja stupa na snagu od 13. Avgusta 2005, proizvodi koji spadaju pod "elektronsku i električnu opremu" ne mogu više biti odbačeni kao običan otpad i proizvođači ove opreme biće prinuđeni da uzmu natrag ove proizvode na kraju njihovog uobičajenog veka trajanja. MSI će poštovati zahtev o preuzimanju ovakvih proizvoda kojima je istekao vek trajanja, koji imaju MSI oznaku i koji su prodati u EU. Ove proizvode možete vratiti na lokalnim mestima za prikupljanje.

POLSKI

Aby chronić nasze środowisko naturalne oraz jako firma dbająca o ekologię, MSI przypomina, że...

Zgodnie z Dyrektywą Unii Europejskiej ("UE") dotyczącą odpadów produktów elektrycznych i elektronicznych (Dyrektywa 2002/96/EC), która wchodzi w życie 13 sierpnia 2005, tzw. "produkty oraz wyposażenie elektryczne i elektroniczne" nie mogą być traktowane jako śmieci komunalne, tak więc producenci tych produktów będą zobowiązani do odbierania ich w momencie gdy produkt jest wycofywany z użycia. MSI wypełni wymagania UE, przyjmując produkty (sprzedawane na terenie Unii Europejskiej) wycofywane z użycia. Produkty MSI będzie można zwracać w wyznaczonych punktach zbiorczych.

TÜRKÇE

Çevreci özelliğiyle bilinen MSI dünyada çevreyi korumak için hatırlatır:

Avrupa Birliği (AB) Kararnamesi Elektrik ve Elektronik Malzeme Atığı, 2002/96/EC Kararnamesi altında 13 Ağustos 2005 tarihinden itibaren geçerli olmak üzere, elektrikli ve elektronik malzemeler diğer atıklar gibi çöpe atılmayacak ve bu elektronik cihazların üreticileri, cihazların kullanım süreleri bittikten sonra ürünleri geri toplamakla yükümlü olacaktır. Avrupa Birliği'ne satılan MSI markalı ürünlerin kullanım süreleri bittiğinde MSI ürünlerin geri alınması isteği ile işbirliği içerisinde olacaktır. Ürünlerinizi yerel toplama noktalarına bırakabilirsiniz.

ČESKY

Záleží nám na ochraně životního prostředí - společnost MSI upozorňuje...

Podle směrnice Evropské unie ("EU") o likvidaci elektrických a elektronických výrobků 2002/96/EC platné od 13. srpna 2005 je zakázáno likvidovat "elektrické a elektronické výrobky" v běžném komunálním odpadu a výrobci elektronických výrobků, na které se tato směrnice vztahuje, budou povinni odebírat takové výrobky zpět po skončení jejich životnosti. Společnost MSI splní požadavky na odebrání výrobků značky MSI, prodávaných v zemích EU, po skončení jejich životnosti. Tyto výrobky můžete odevzdat v místních sběrnách.

MAGYAR

Annak érdekében, hogy környezetünket megvédjük, illetve környezetvédőként fellépve az MSI emlékezteti Önt, hogy ...

Az Európai Unió („EU”) 2005. augusztus 13-án hatályba lépő, az elektromos és elektronikus berendezések hulladékairól szóló 2002/96/EK irányelve szerint az elektromos és elektronikus berendezések többé nem kezelhetők lakossági hulladékként, és az ilyen elektronikus berendezések gyártói kötelesek válnak az ilyen termékek visszavételére azok hasznos élettartama végén. Az MSI betartja a termékvisszavétellel kapcsolatos követelményeket az MSI márkanév alatt az EU-n belül értékesített termékek esetében, azok élettartamának végén. Az ilyen termékeket a legközelebbi gyűjtőhelyre viheti.

ITALIANO

Per proteggere l'ambiente, MSI, da sempre amica della natura, ti ricorda che....

In base alla Direttiva dell'Unione Europea (EU) sullo Smaltimento dei Materiali Elettrici ed Elettronici, Direttiva 2002/96/EC in vigore dal 13 Agosto 2005, prodotti appartenenti alla categoria dei Materiali Elettrici ed Elettronici non possono più essere eliminati come rifiuti municipali: i produttori di detti materiali saranno obbligati a ritirare ogni prodotto alla fine del suo ciclo di vita. MSI si adeguerà a tale Direttiva ritirando tutti i prodotti marchiati MSI che sono stati venduti all'interno dell'Unione Europea alla fine del loro ciclo di vita. È possibile portare i prodotti nel più vicino punto di raccolta.

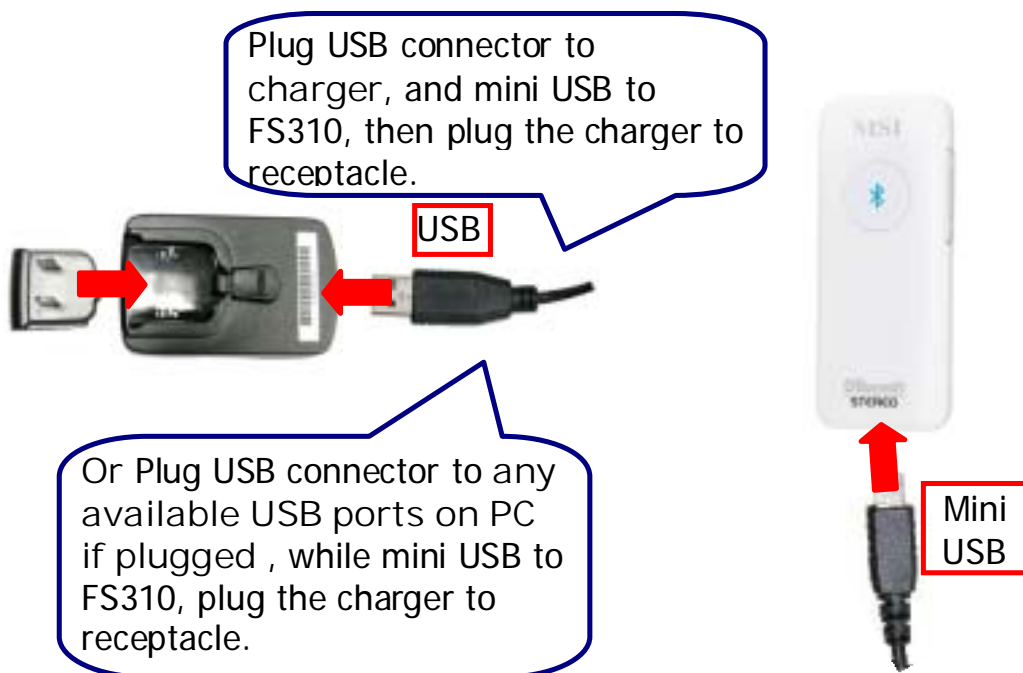
Chapter 1

ENGLISH

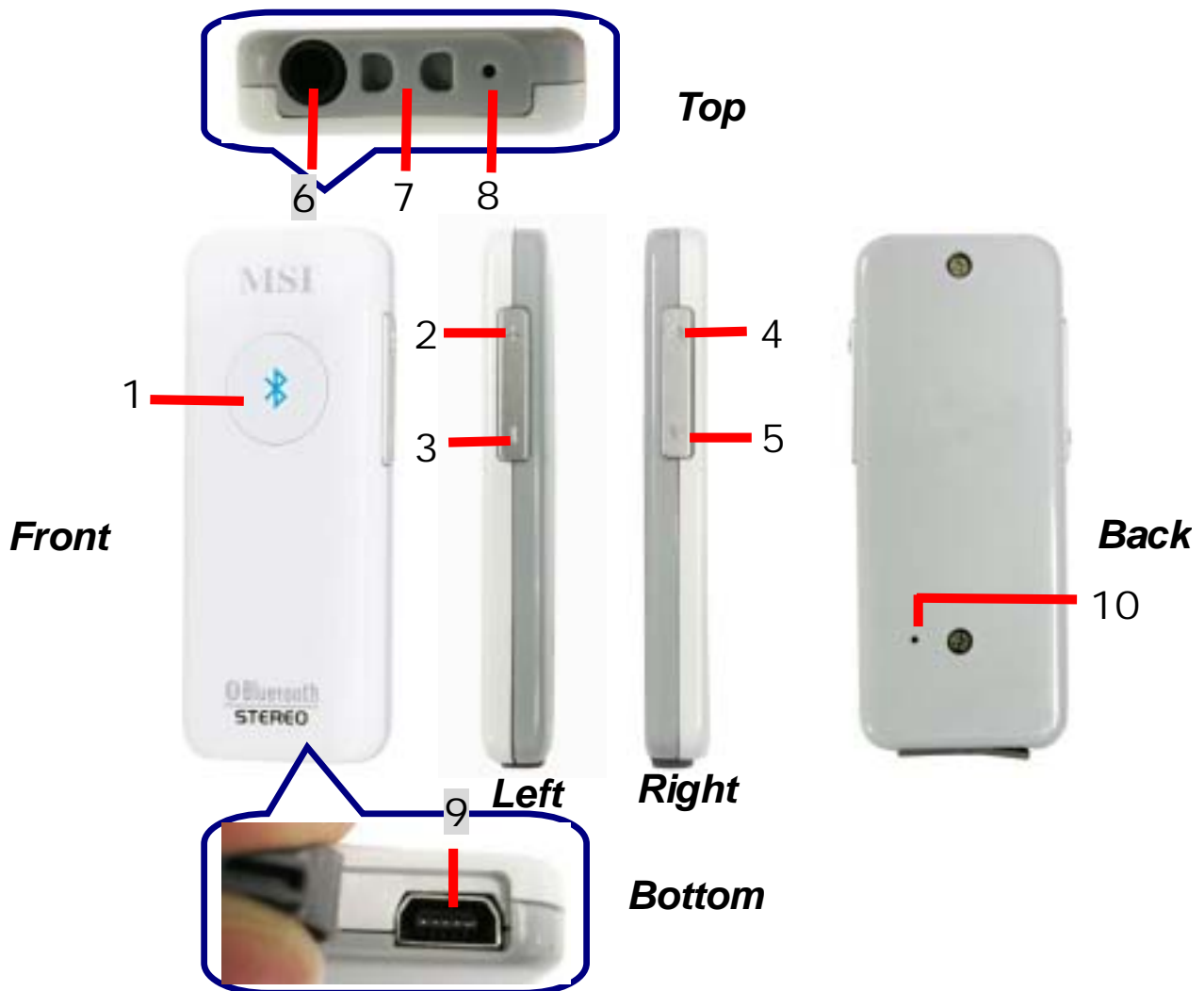
Battery Charging

FS310 is equipped with high quality **Li-polymer battery**. You can charge battery by either connecting accompanied cable to any available USB port on PC/laptop or directly plug the USB cable into the attached charger. The battery duration could be up to **7.5 hours** of music listening after 3.5 hours of charging. Please make sure of power sufficiency each time when you are about to use FS310.

Please assemble the battery charger in either way:




FS310 Button



1. *Function Button*
(Power ON/OFF, answering/rejecting incoming calls)
2. *+ Volume Up*
3. *- Volume Dn*
4. *Forward/ Pick Up Skype*
5. *Backward/ Hang Up Skype*
6. *3.5mm earpiece jack*
7. *Strap eyelet*
8. *Microphone*
9. *Battery Charging (mini USB port)*
10. *Reset*

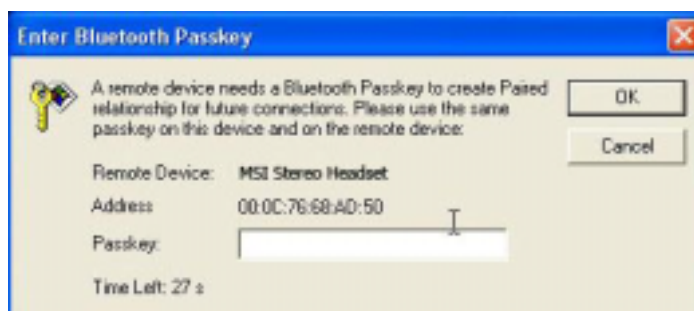
Listen to Music

FS310 equipped with unique stereo software system and built-in **DSP solution** delivers crystal clear music as CD quality. **Embedded noise canceling microphone** enhances audio quality by blocking out background noises.

1. Press function button of FS310  to power on it. FS310 will be in pairing mode by default, you can search FS310 via Bluetooth software. MSI Stereo Headset icon shall appear once searched, right-click to select **Pair Device**.




You shall be prompted to enter Bluetooth passkey, enter default passkey **0000**, and then click **OK** to complete pairing process. The LED indicator of FS310 shall light up un-interrupted showing pairing mode.



2. A **red check** shows by MSI Stereo Headset icon indicates the successful pairing.




3. Right-click the FS310 (MSI Stereo Headset) icon, then select **Connect/Bluetooth AV Service** to enable Bluetooth AV Service function. Or you may click the **Bluetooth AV Service** icon  on upper side of the main screen instead to enable this function.



4. A **red dot** moves back and forth between the sun and MSI Stereo Headset icon signifying the connection has been made.



5. Following is an example of listening music via Windows Media Player. Song volume and sequence are adjustable by pressing **play/pause**, **volume up/down (+/-)** or **forward/backward (<</>>)** button  on FS310 at your preference.





Note: IVT BlueSoleil Software supports only Windows Media Player , WinAmp and RealOne.

LED Indication

1. **Before Connected** --- Blue LED flashes always.
2. **Under Usage** --- Blue LED blinks 0.3 seconds in every 4 seconds.
3. **Low Battery and before connected** --- Red LED flashes always.
4. **Low Battery and under connected status** ---- Red LED blinks 0.3 seconds in every 4 seconds.
5. **Charging Status** --- Orange LED shines, and shall stop when finished.

Pairing With Bluetooth Cell Phone

Before using FS310 together with your Bluetooth-enabled cell phone, you need to have both devices paired first.



1. Press function button  for about 3 seconds.
2. The pass key of FS310 is “**0000**”.
3. After both devices have been successfully paired, the function button  of FS310 shall blink at a regular interval.

Note:

Bluetooth setting might vary due to different brands models involved. Please refer to your cell phone user manual for details.

Answer/Reject An Incoming Call

With this function, you won't miss any important calls and you may reject calls when you prefer not to be disturbed by undesired calls.

1. As an incoming call arrives, **a tone** can be heard, and the music you were listened to would be paused.
2. **Press and release**  **to answer** an incoming call
3. **Press**  more than 3 seconds to reject an incoming call.

MSI Stereo Headset FS310

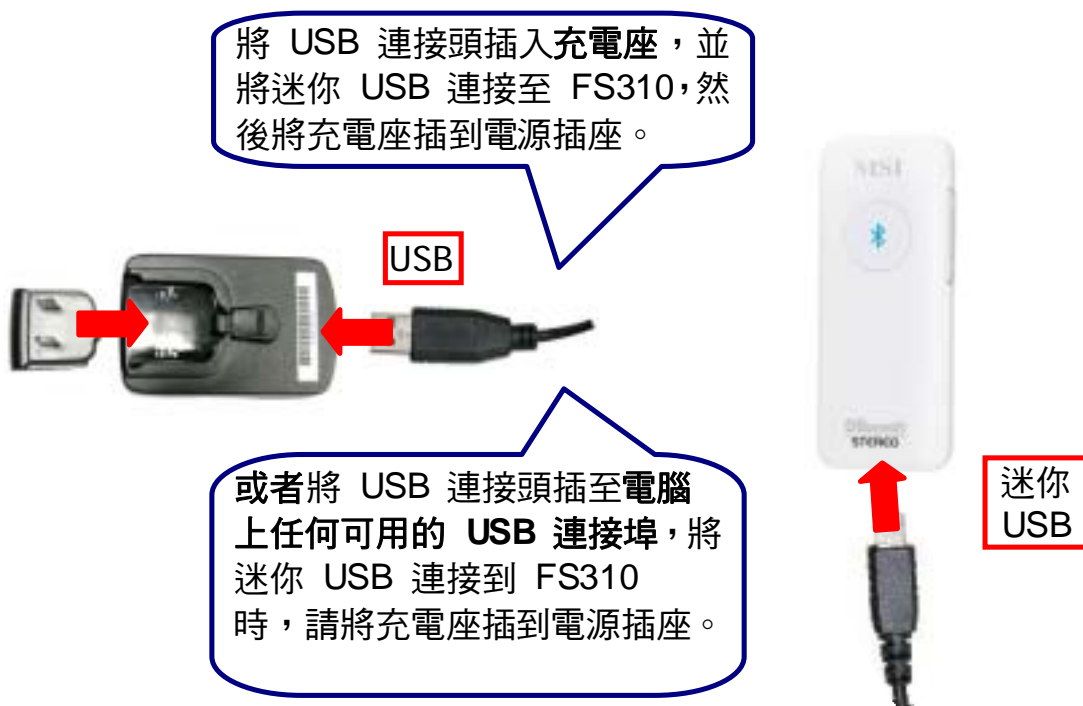
第 16 章

繁體中文

充電

FS310 備有高品質的鋰聚合電池。將隨附的電線連接至任何個人電腦或膝上型電腦可用的 USB 連接埠，或直接將 USB 線插入隨附的充電座中，便可對電池進行充電。充電 3.5 個小時，電池可持續進行高達 7.5 個小時的音樂播放。每次使用 FS310 之前，請先確定電源是否足夠。

請以圖中任一方式連接電池充電座：



FS310 按鍵



1. 功能鍵
(電源開/關、接聽/拒聽來電)
2. + 提高音量
3. - 降低音量
4. 下一首 / 接通 Skype
5. 上一首 / 掛斷 Skype
6. 3.5mm 耳機插孔
7. 頸鍊孔
8. 麥克風
9. 充電孔 (迷你 USB 連接埠)
10. 重設

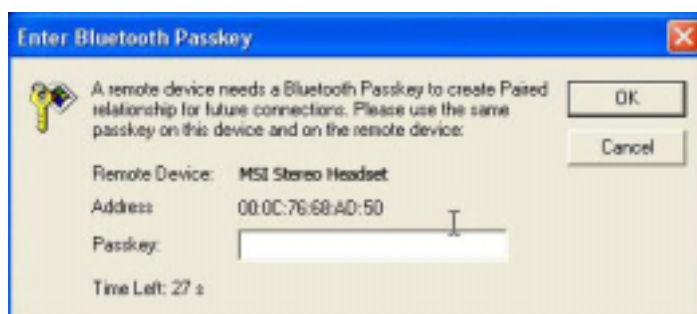
聆聽音樂

FS310 配備了獨特的立體聲軟體系統，並有內建 **DSP 解決方案**，可播放出媲美 CD 音質的音樂。內建**抗噪音麥克風**，可阻絕背景環境中的噪音，提升音效品質。

1. 按下 FS310 的功能鍵  便可開啟電源。FS310 的預設設定為配對模式，您可透過藍芽軟體搜尋 FS310。搜尋後，應會出現 MSI Stereo Headset 圖示，請按一下滑鼠右鍵選取 **Pair Device**。



應會出現要求輸入藍芽密碼的提示，此時請輸入預設密碼 **0000**，然後點選 **OK** 完成配對程序。FS310 的 LED 指示燈應會不斷亮起，表示目前為配對模式。



2. MSI Stereo Headset 圖示若顯示紅色核取標記，就表示配對成功。




3. 在 FS310 MSI Stereo Headset 圖示上按一下滑鼠右鍵，然後選取 **Connect/Bluetooth AV Service**，以便啟動藍芽 AV 服務功能。或者您也可以點選主畫面上方的 **Bluetooth AV Service** 圖示  啟用此功能。



4. 在太陽圖案和 MSI Stereo Headset 圖示間前後移動的紅色圓點表示已連接完成。



5. 以下為使用 Windows Media Player 聽取音樂的範例。只要按下 FS310 的播放/暫停、提升/降低 (+/-) 音量或下一首/上一首 (<</>>) 按鈕 ，便可依個人喜好調整歌曲音量和順序。





註：IVT BlueSoleil 軟體僅支援 Windows Media Player、WinAmp 以及 RealOne。

LED 指示

1. 連接前 --- 持續閃爍藍色 LED。
2. 使用中 --- 藍色 LED 每 4 秒鐘便閃爍 0.3 秒。
3. 連接前低電量--- 持續閃爍紅色 LED。
4. 低電量且在連線狀態---- 紅色 LED 每 4 秒鐘便閃爍 0.3 秒。
5. 充電中狀態 --- 閃示橘色 LED，充電完成後便會停止。

與藍芽行動電話進行配對

在將藍芽行動電話與 FS310 搭配使用前，必須先將兩個裝置進行配對。



1. 按住功能鍵  約 3 秒。
2. FS310 的密碼是「0000」。
3. 兩個裝置都成功配對後，FS310 功能鍵  會以一定的間隔時間閃爍。

註：

不同廠牌型號的藍芽設定可能皆不盡相同。詳細資訊請參閱個人行動電話的使用手冊。

接聽/拒聽來電

有了此功能後，您將不會錯過任何重要來電，此外，若不希望被打擾，也可以選擇拒絕接聽來電。

1. 接到來電時，您會聽到一個音調，正在聆聽的音樂也會暫時停止播放。
2. 按下然後放開  便可接聽來電
3. 按住  3 秒以上便可拒絕接聽來電。

