



台揚科技股份有限公司
MICROELECTRONICS TECHNOLOGY INC.

MTI RU-888-0 RFID Module

User Manual Version 4.0

MTI Group Proprietary Information

Any unauthorized use, duplication, reproduction, or disclosure of this document may be considered as infringement of MTI Group's intellectual

Content

1. Start Demo SW
2. Advanced Reader Setting
3. Inventory Run
4. Advanced Tag Setting

台揚集團智慧財產

任何未經授權之複製、重製、公開或使用本文之行為，將被視為侵害台揚集團之智慧財產權，將可因此負擔法律責任。

MTI Group Proprietary Information

Any unauthorized use, duplication, reproduction, or disclosure of this document may be considered as infringement of MTI Group's intellectual property rights, the infringer may be accused and liable applicable legal penalties.

WARNING : Please keep more than 20 cm away when doing the test.

1. Start Demo DW

1.1 Double click the icon as in Fig.1



Fig.1

1.2 Plug Antenna and USB cable you could see the Demo SW shown **Online** as in

Fig.2

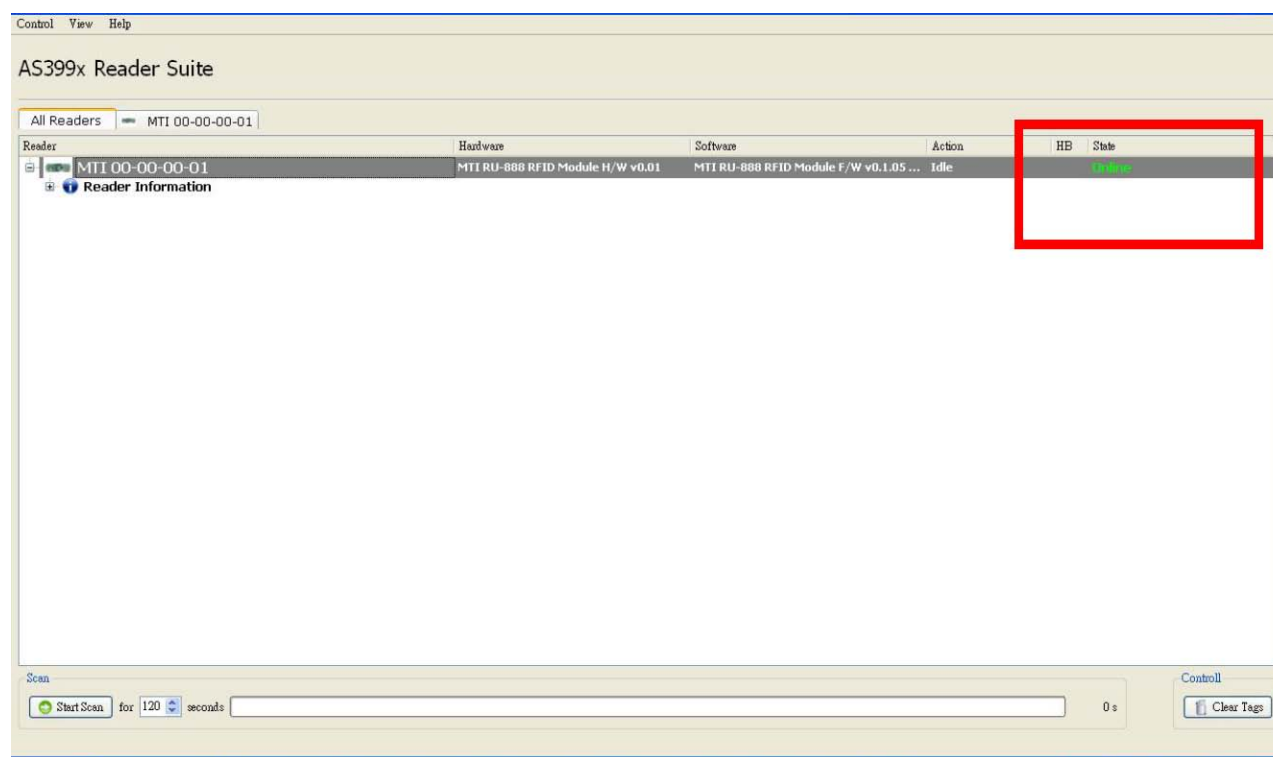


Fig.2

台揚集團智慧財產

任何未經授權之複製、重製、公開或使用本文之行為，將被視為侵害台揚集團之智慧財產權，將可因此負擔法律責任。

MTI Group Proprietary Information

Any unauthorized use, duplication, reproduction, or disclosure of this document may be considered as infringement of MTI Group's intellectual property rights, the infringer may be accused and liable applicable legal penalties.

2. Advanced Reader Setting

2.1 Right click the MTI module and will show “Reader Setting ” on screen. You

could start to set the region, frequency, and output power as in Fig.3

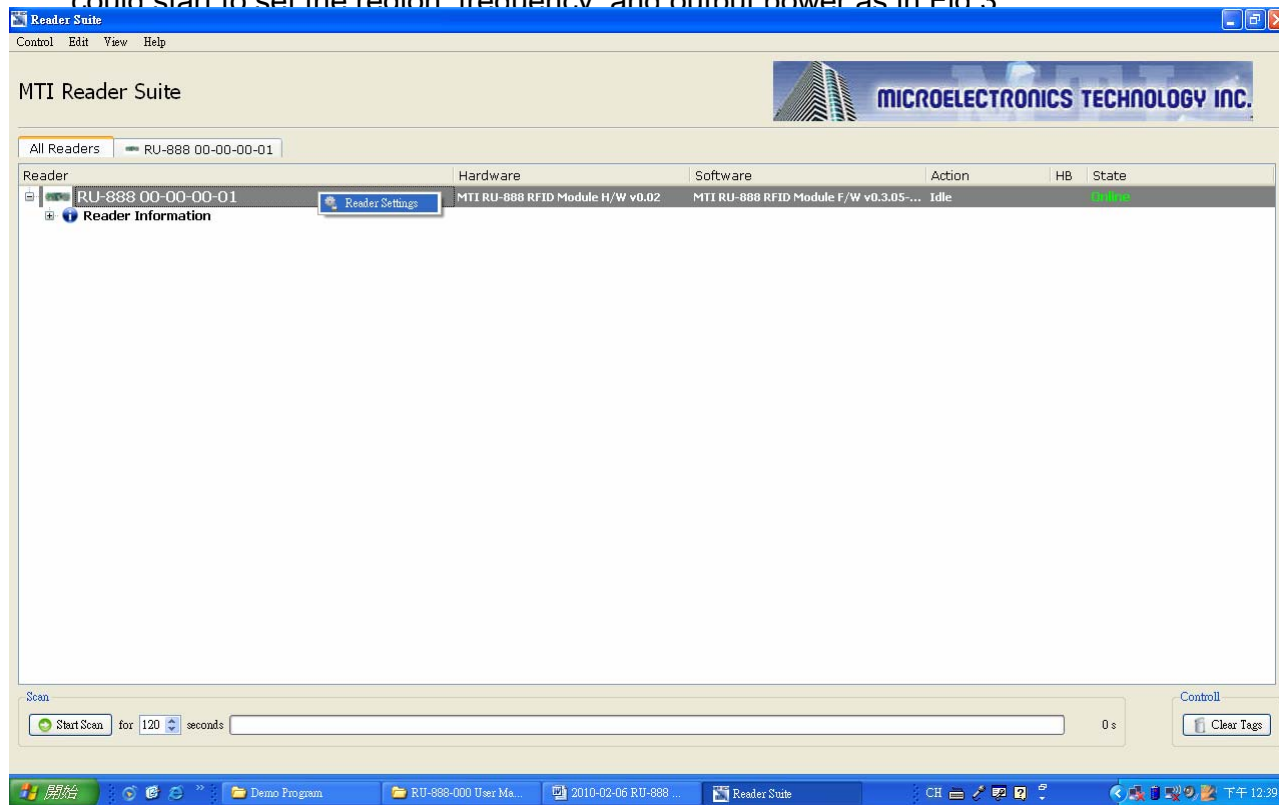


Fig.3

2.2 Please you must set **Region, Power Level, and choose Hopping in Frequency**

Column when you would like to do the normal test. Press Submit to sent the parameters and press exit to leave this window as shown in Fig.4. 「RSSI and LBT」 and 「Gen2 Setting」 Column could let you do more

advantage setting. The default value of sensitivity level is -84 dBm. Please shift

the button if you

台揚集團智慧財產

任何未經授權之複製、重製、公開或使用本文之行為，將被視為侵害台揚集團之智慧財產權，將可因此負擔法律責任。

MTI Group Proprietary Information

Any unauthorized use, duplication, reproduction, or disclosure of this document may be considered as infringement of MTI Group's intellectual property rights, the infringer may be accused and liable applicable legal penalties.

would like to set another value.

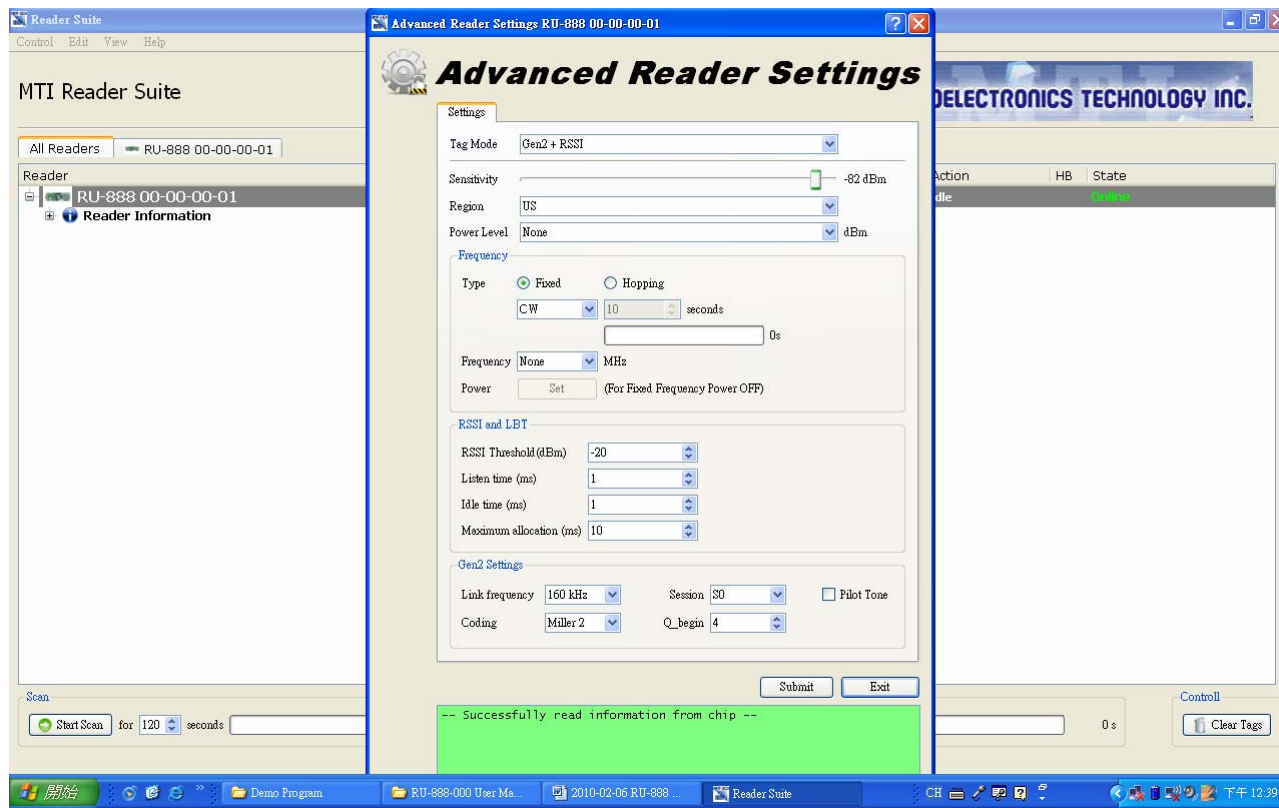


Fig.4

台揚集團智慧財產

任何未經授權之複製、重製、公開或使用本文之行為，將被視為侵害台揚集團之智慧財產權，將可因此負擔法律責任。

MTI Group Proprietary Information

Any unauthorized use, duplication, reproduction, or disclosure of this document may be considered as infringement of MTI Group's intellectual property rights, the infringer may be accused and liable applicable legal penalties.

3. Inventory Run

3.1 After setting the parameter, please press “ Start Scan “ to start the inventory run

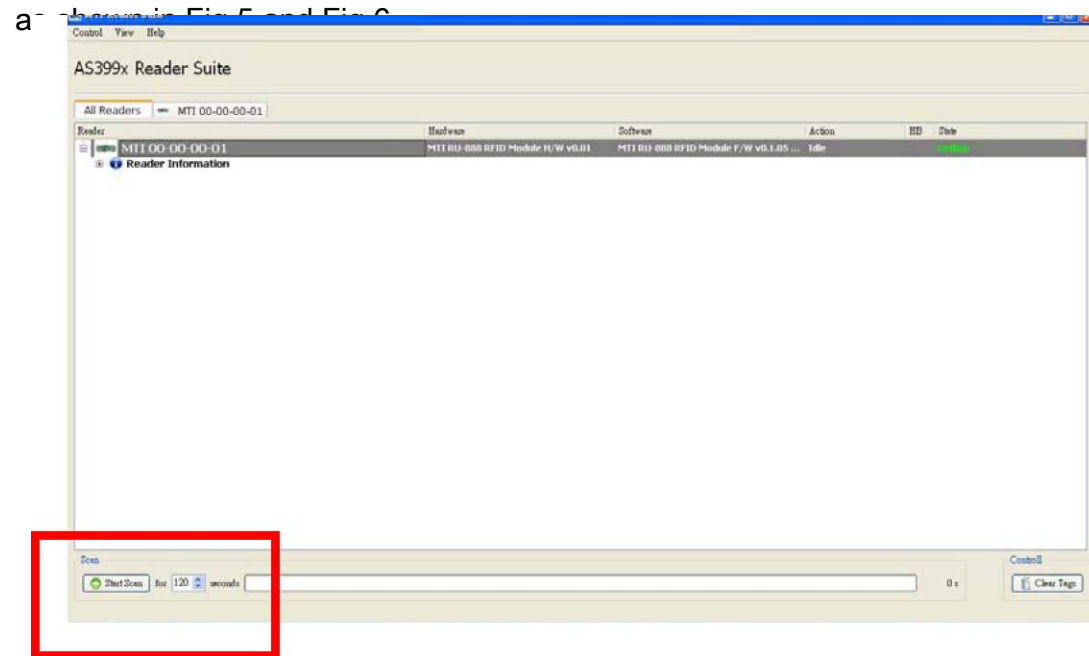


Fig.5

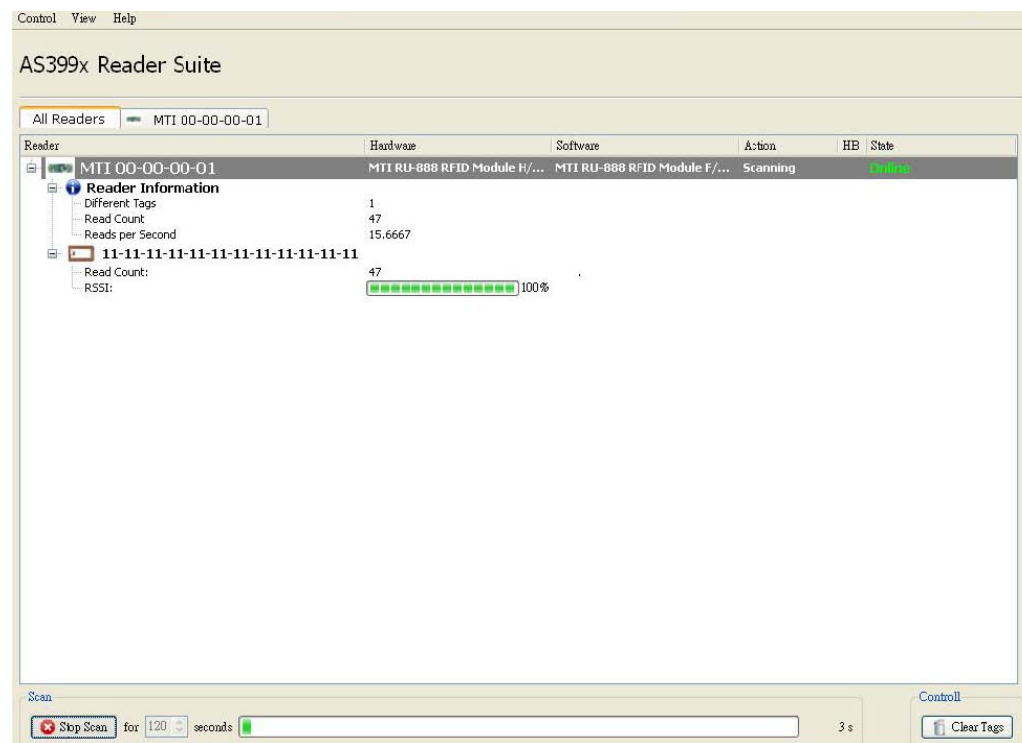


Fig.6

台揚集團智慧財產

任何未經授權擅自複製、重製、公開或使用本文之行為，將被視為侵害台揚集團之智慧財產權，將可因此負擔法律責任。

MTI Group Proprietary Information

Any unauthorized use, duplication, reproduction, or disclosure of this document may be considered as infringement of MTI Group's intellectual property rights, the infringer may be accused and liable applicable legal penalties.

4.3 Option function : Memory Bank Read/Write Function. You could read

Reserved, EPC, TID, and User Bank at Memory Column. Choose the one you would like to know the information and press the Read Button as shown in Fig.9.

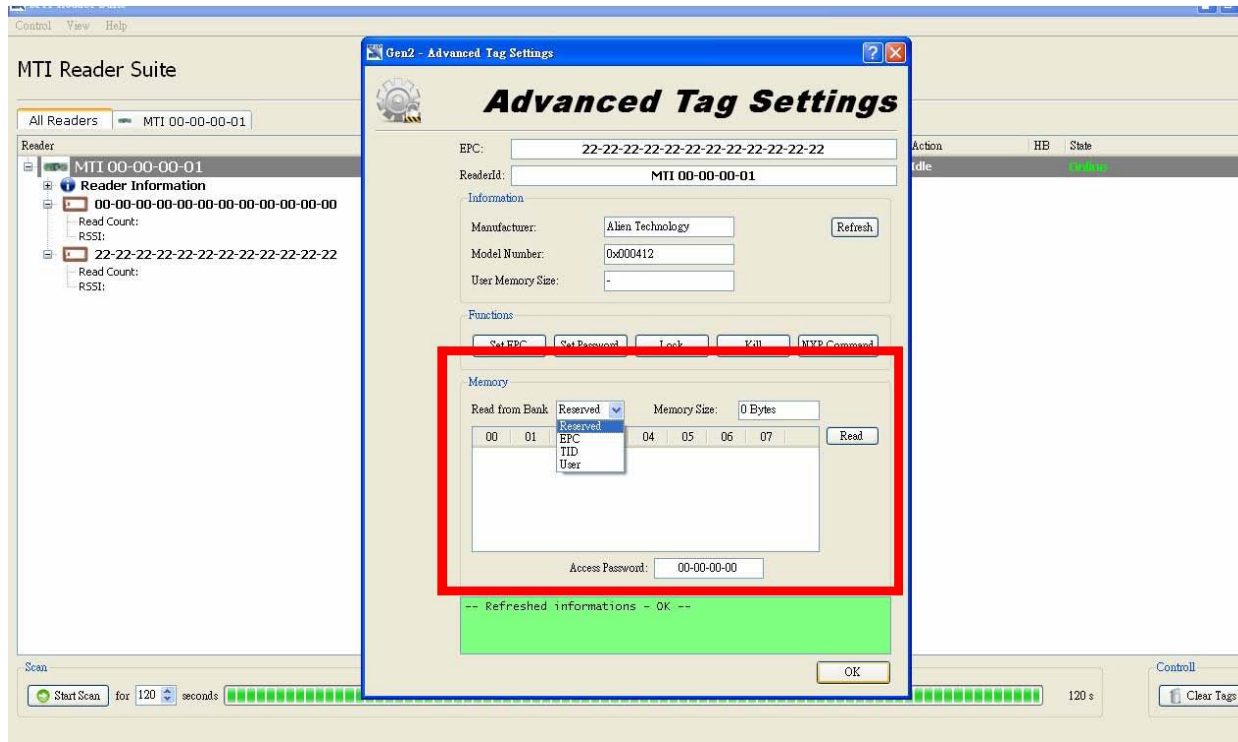


Fig. 9

a. You could see this kind of picture as in Fig. 10 if MTI module could get complete information from the tag.

台揚集團智慧財產

任何未經授權之複製、重製、公開或使用本文之行為，將被視為侵害台揚集團之智慧財產權，將可因此負擔法律責任。

MTI Group Proprietary Information

Any unauthorized use, duplication, reproduction, or disclosure of this document may be considered as infringement of MTI Group's intellectual property rights, the infringer may be accused and liable applicable legal penalties.

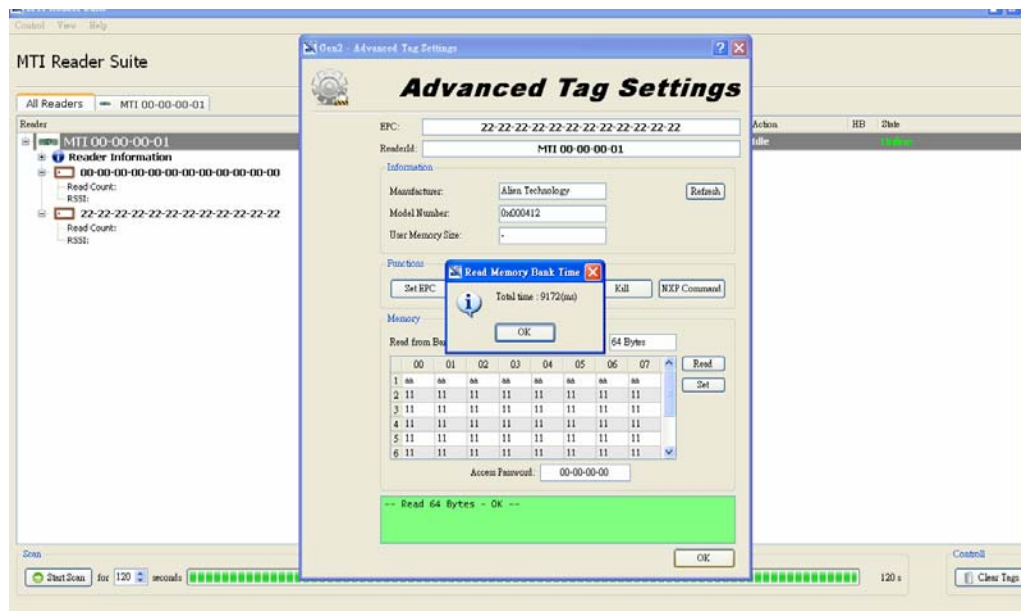


Fig. 10

b. You could see this kind of picture as in Fig. 11 if MTI module couldn't get complete information from the tag

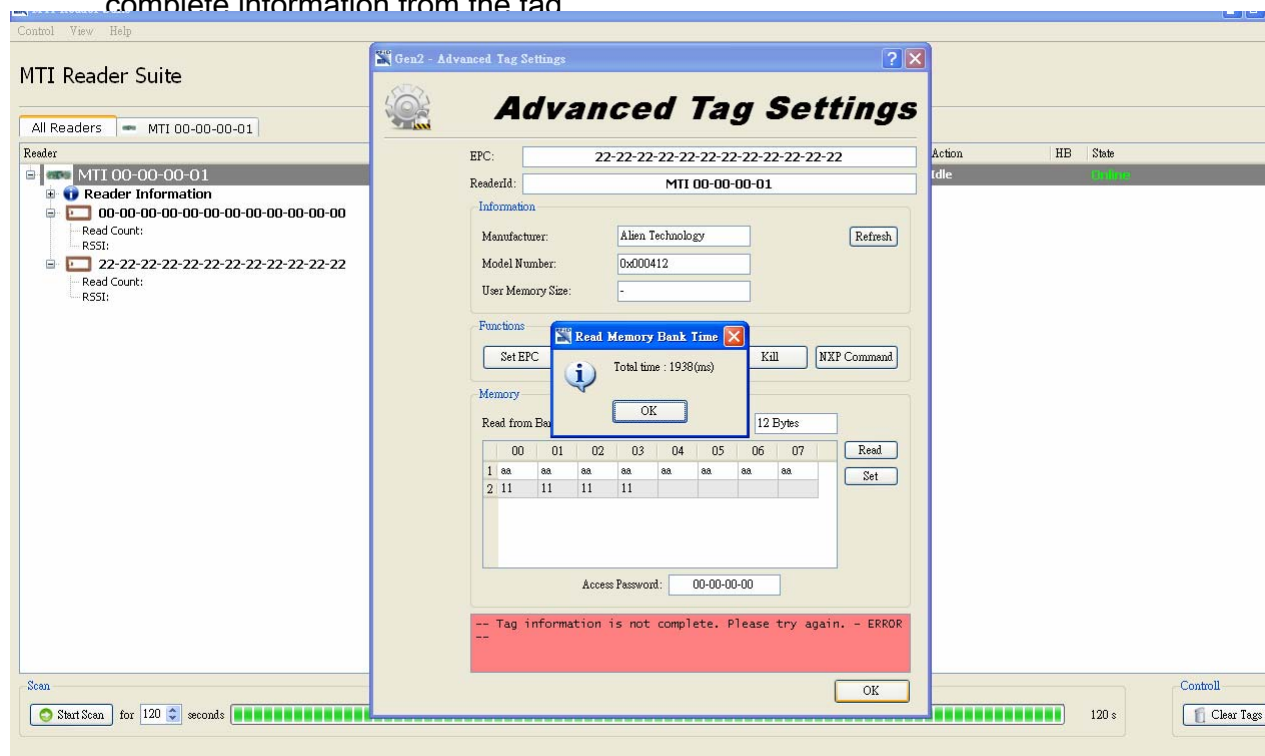


Fig. 11

台揚集團智慧財產

任何未經授權之複製、重製、公開或使用本文之行為，將被視為侵害台揚集團之智慧財產權，將可因此負擔法律責任。

MTI Group Proprietary Information

Any unauthorized use, duplication, reproduction, or disclosure of this document may be considered as infringement of MTI Group's intellectual property rights, the infringer may be accused and liable applicable legal penalties.

Federal Communication Commission Interference Statement

This equipment has been tested and found to comply with the limits for a Class B digital device, pursuant to Part 15 of the FCC Rules. These limits are designed to provide reasonable protection against harmful interference in a residential installation. This equipment generates, uses and can radiate radio frequency energy and, if not installed and used in accordance with the instructions, may cause harmful interference to radio communications. However, there is no guarantee that interference will not occur in a particular installation. If this equipment does cause harmful interference to radio or television reception, which can be determined by turning the equipment off and on, the user is encouraged to try to correct the interference by one of the following measures:

- Reorient or relocate the receiving antenna.
- Increase the separation between the equipment and receiver.
- Connect the equipment into an outlet on a circuit different from that to which the receiver is connected.
- Consult the dealer or an experienced radio/TV technician for help.

This device complies with Part 15 of the FCC Rules. Operation is subject to the following two conditions: (1) This device may not cause harmful interference, and (2) this device must accept any interference received, including interference that may cause undesired operation.

FCC Caution: Any changes or modifications not expressly approved by the party responsible for compliance could void the user's authority to operate this equipment.

IMPORTANT NOTE: FCC Radiation

Exposure Statement:

This equipment complies with FCC radiation exposure limits set forth for an uncontrolled environment. This equipment should be installed and operated with minimum distance 20cm between the radiator & your body. This transmitter must not be co-located or operating in conjunction with any other antenna or transmitter.

LABEL OF THE END PRODUCT:

The final end product must be labeled in a visible area with the following "Contains TX FCC ID: MAD-RU-888-0 ". The FCC part 15.19 statement below has to also be available on the label: This device complies with Part 15 of FCC rules. Operation is subject to the following two conditions:
(1) this device may not cause harmful interference and
(2) this device must accept any interference received, including interference that may cause undesired operation.

台揚集團智慧財產

任何未經授權擅自複製、重製、公開或使用本文之行為，將被視為侵害台揚集團之智慧財產權，將可因此負擔法律責任。

MTI Group Proprietary Information

Any unauthorized use, duplication, reproduction, or disclosure of this document may be considered as infringement of MTI Group's intellectual property rights, the infringer may be accused and liable applicable legal penalties.