



台揚科技股份有限公司
MICROELECTRONICS TECHNOLOGY INC.

MTI RU-888-1 RFID USB Dongle

User Manual Version 5.0

MTI Group Proprietary Information

Any unauthorized use, duplication, reproduction, or disclosure of this document may be considered as infringement of MTI Group's intellectual property rights, the infringer may be accused and liable applicable legal penalties.

Content

1. User Set Up
2. Start Demo SW
3. Advanced Reader Setting
4. Inventory Run
5. Advanced Tag Setting

台揚集團智慧財產

任何未經授權進行複製、重製、公開或使用本文之行為，將被視為侵害台揚集團之智慧財產權，將可因此負擔法律責任。

MTI Group Proprietary Information

Any unauthorized use, duplication, reproduction, or disclosure of this document may be considered as infringement of MTI Group's intellectual property rights, the infringer may be accused and liable applicable legal penalties.

台揚集團智慧財產 Any unauthorized use, duplication, reproduction, or disclosure of this document may be 任何未經授權進行複製、重製、公開或使用本文之行為，將被視為侵害 considered as infringement of MTI Group's intellectual property rights, the infringer may 台揚集團之智慧財產權，將可因此負擔法律責任。 be accused and liable applicable legal penalties.

1. User Set Up

Once you get this product, you just connect MTI USB Dongle directly to your electrical products with USB and download the Demo SW from our CD.



台揚集團智慧財產

任何未經授權之複製、重製、公開或使用本文之行為，將被視為侵害台揚集團之智慧財產權，將可因此負擔法律責任。

MTI Group Proprietary Information

Any unauthorized use, duplication, reproduction, or disclosure of this document may be considered as infringement of MTI Group's intellectual property rights, the infringer may be accused and liable applicable legal penalties.

Please must plug two connectors once the output power is up 17dBm.

2. Start Demo DW

2.1 Double click the icon as in Fig.1



Fig.1

2.2 Plug Antenna and USB cable you could see the Demo SW shown **Online** as in

Fig.2

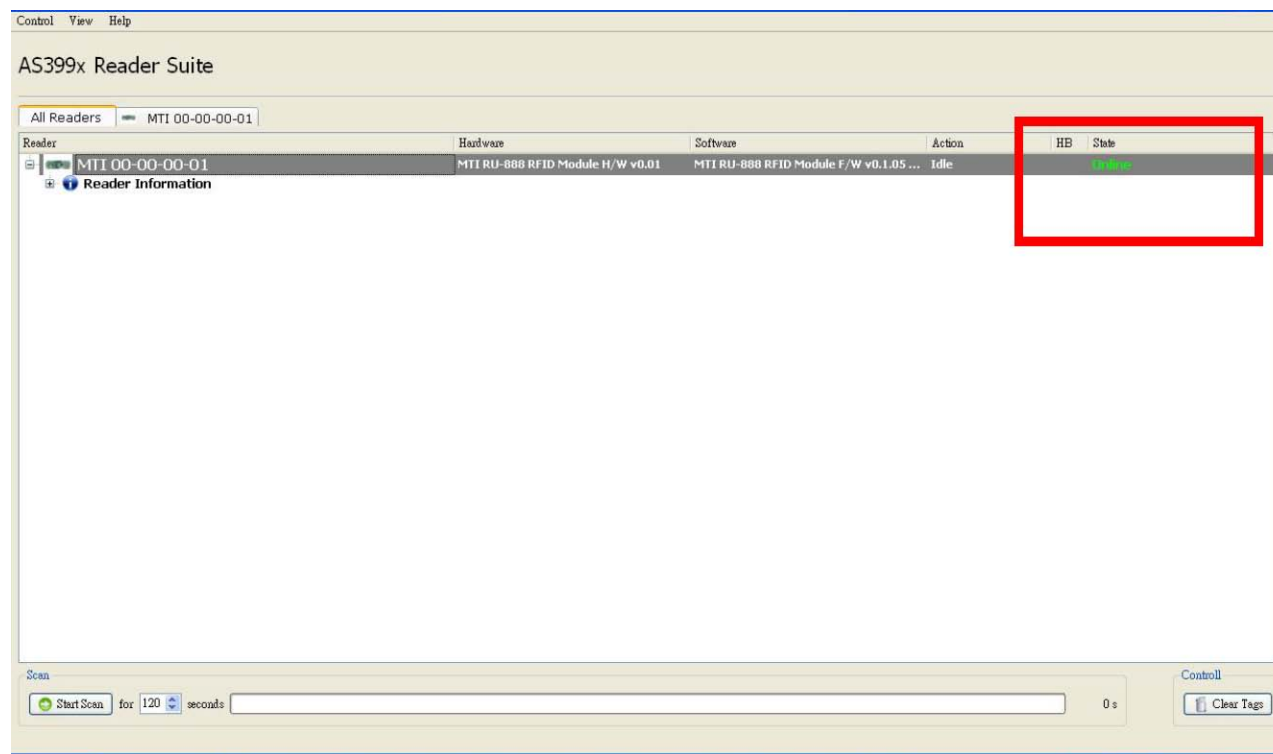


Fig.2

台揚集團智慧財產

任何未經授權之複製、重製、公開或使用本文之行為，將被視為侵害台揚集團之智慧財產權，將可因此負擔法律責任。

MTI Group Proprietary Information

Any unauthorized use, duplication, reproduction, or disclosure of this document may be considered as infringement of MTI Group's intellectual property rights, the infringer may be accused and liable applicable legal penalties.

4.3 Option function : Memory Bank Read/Write Function. You could read

Reserved, EPC, TID, and User Bank at Memory Column. Choose the one you would like to know the information and press the Read Button as shown in Fig.9.

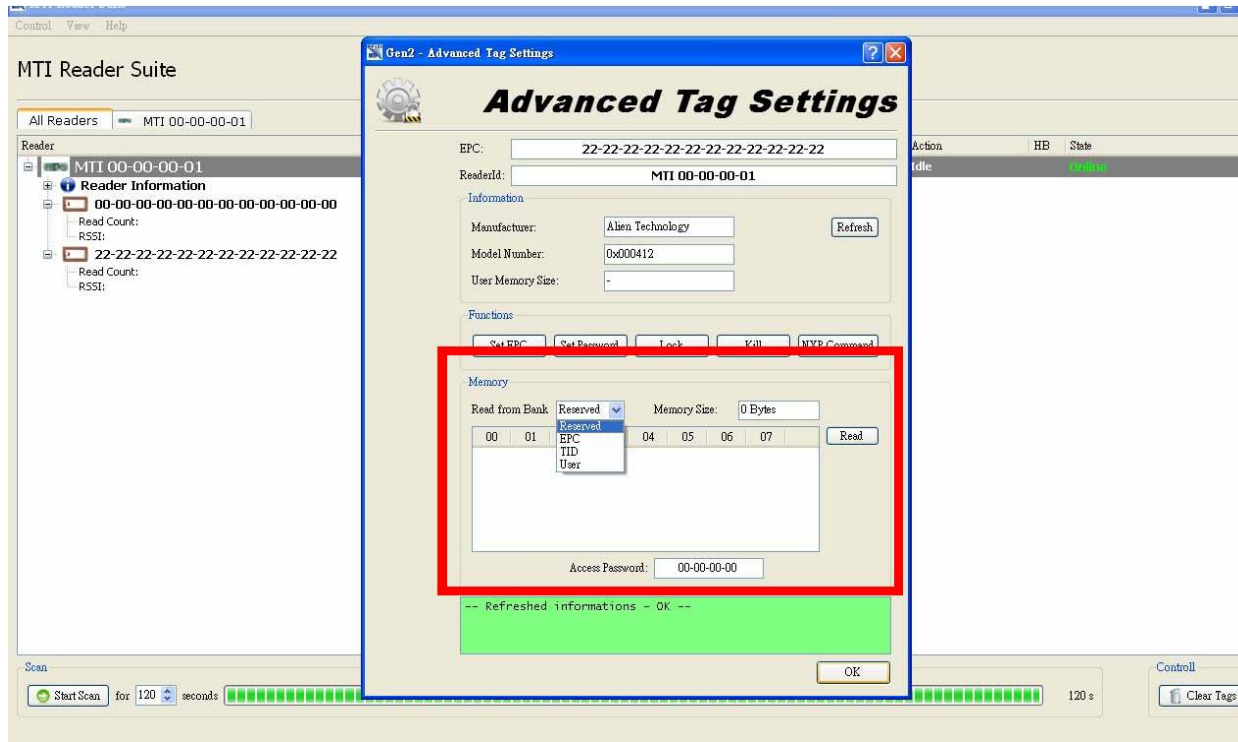


Fig. 7

a. You could see this kind of picture as in Fig. 8 if MTI module could get complete information from the tag.

台揚集團智慧財產

任何未經授權之複製、重製、公開或使用本文之行為，將被視為侵害台揚集團之智慧財產權，將可因此負擔法律責任。

MTI Group Proprietary Information

Any unauthorized use, duplication, reproduction, or disclosure of this document may be considered as infringement of MTI Group's intellectual property rights, the infringer may be accused and liable applicable legal penalties.

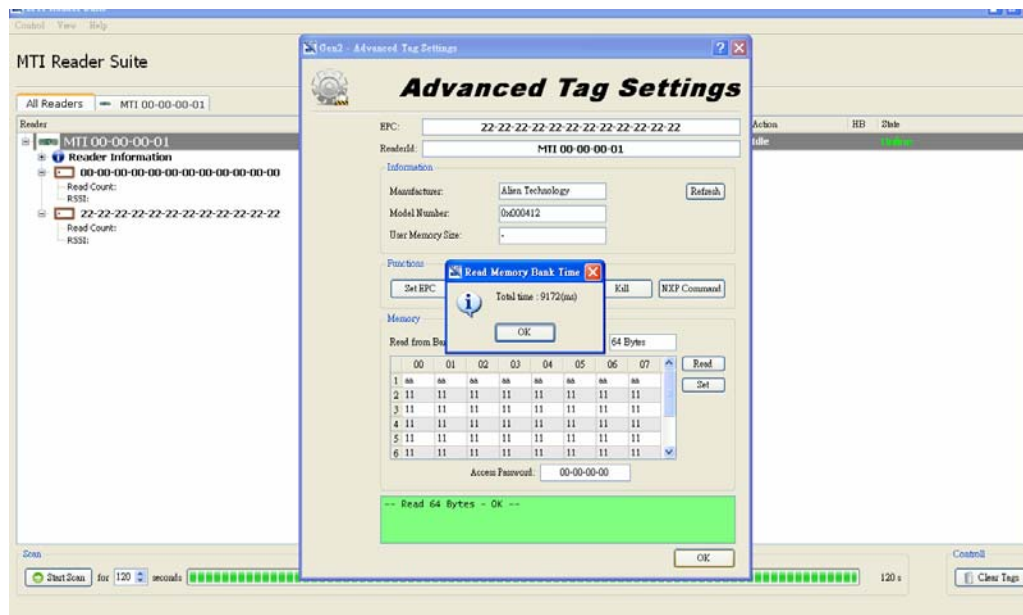


Fig. 8

b. You could see this kind of picture as in Fig. 9 if MTI module couldn't get complete information from the tag

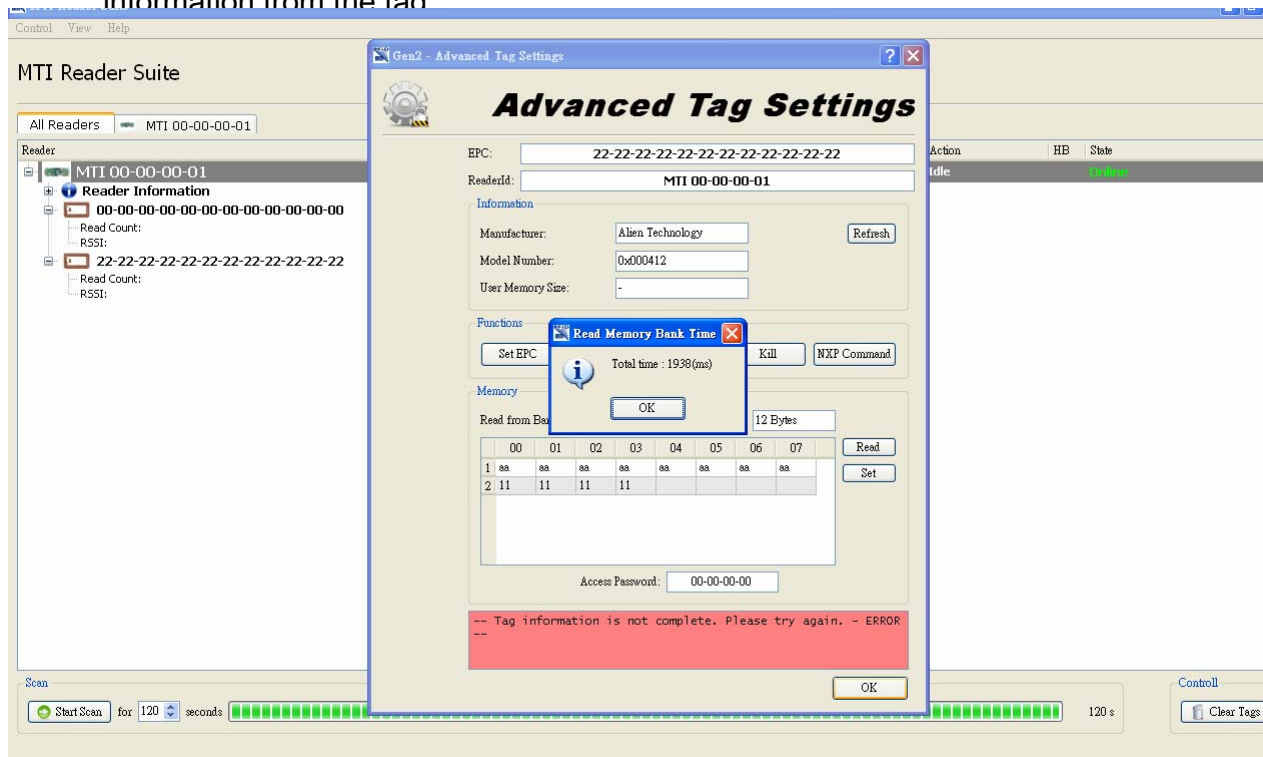


Fig. 9

台揚集團智慧財產
 任何未經授權之複製、重製、公開或
 被視為侵害台揚集團之智慧財產權，
 將可因此負擔法律責任。

MTI Group Proprietary Information
 Any unauthorized use, duplication, reproduction, or disclosure of this document may be considered as infringement of MTI Group's intellectual property rights, the infringer may be liable for legal penalties.

FCC Warning statement

This equipment has been tested and found to comply with the limits for a Class B digital device, pursuant to part 15 of the FCC rules. These limits are designed to provide reasonable protection against harmful interference in a residential installation. This equipment generates, uses and can radiate radio frequency energy and, if not installed and used in accordance with the instructions, may cause harmful interference to radio communications. However, there is no guarantee that interference will not occur in a particular installation. If this equipment does cause harmful interference to radio or television reception, which can be determined by turning the equipment off and on, the user is encouraged to try to correct the interference by one or more of the following measures: -Reorient or relocate the receiving antenna. -Increase the separation between the equipment and receiver. -Connect the equipment into an outlet on a circuit different from that to which the receiver is connected. -Consult the dealer or an experienced radio/TV technician for help.

This device complies with Part 15 of the FCC Rules. Operation is subject to the following two conditions: (1) this device may not cause harmful interference and (2) this device must accept any interference received, including interference that may cause undesired operation

FCC Caution: Any changes or modifications not expressly approved by the party responsible for compliance could void the user's authority to operate this equipment.

FCC RF Radiation Exposure Statement:

1. This Transmitter must not be co-located or operating in conjunction with any other antenna or transmitter.
2. This equipment complies with FCC RF radiation exposure limits set forth for an uncontrolled environment.

FCC RF Radiation Exposure Statement:

1. This Transmitter must not be co-located or operating in conjunction with any other antenna or transmitter.
2. This equipment complies with FCC RF radiation exposure limits set forth for an uncontrolled environment. This device was tested for operations with the device contacted directly to the human body to the [back side](#) of the [Phantom](#). To maintain compliance with FCC RF exposure compliance requirements, avoid direct contact to the transmitting antenna during transmitting.