

USER MANUAL

**Jamo**<sup>®</sup>

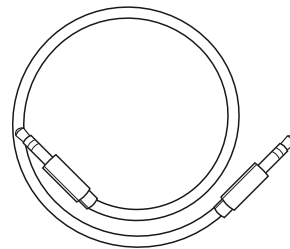
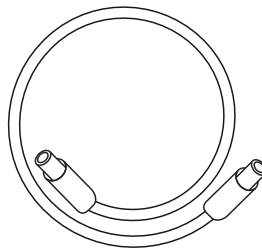
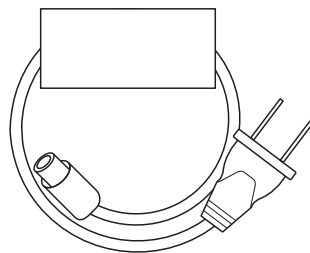
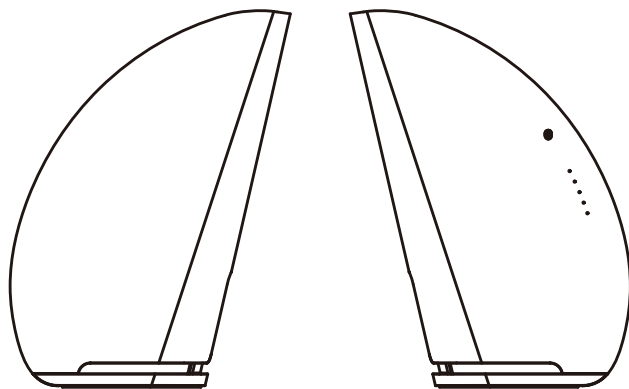
D I G I T A L   D S 5





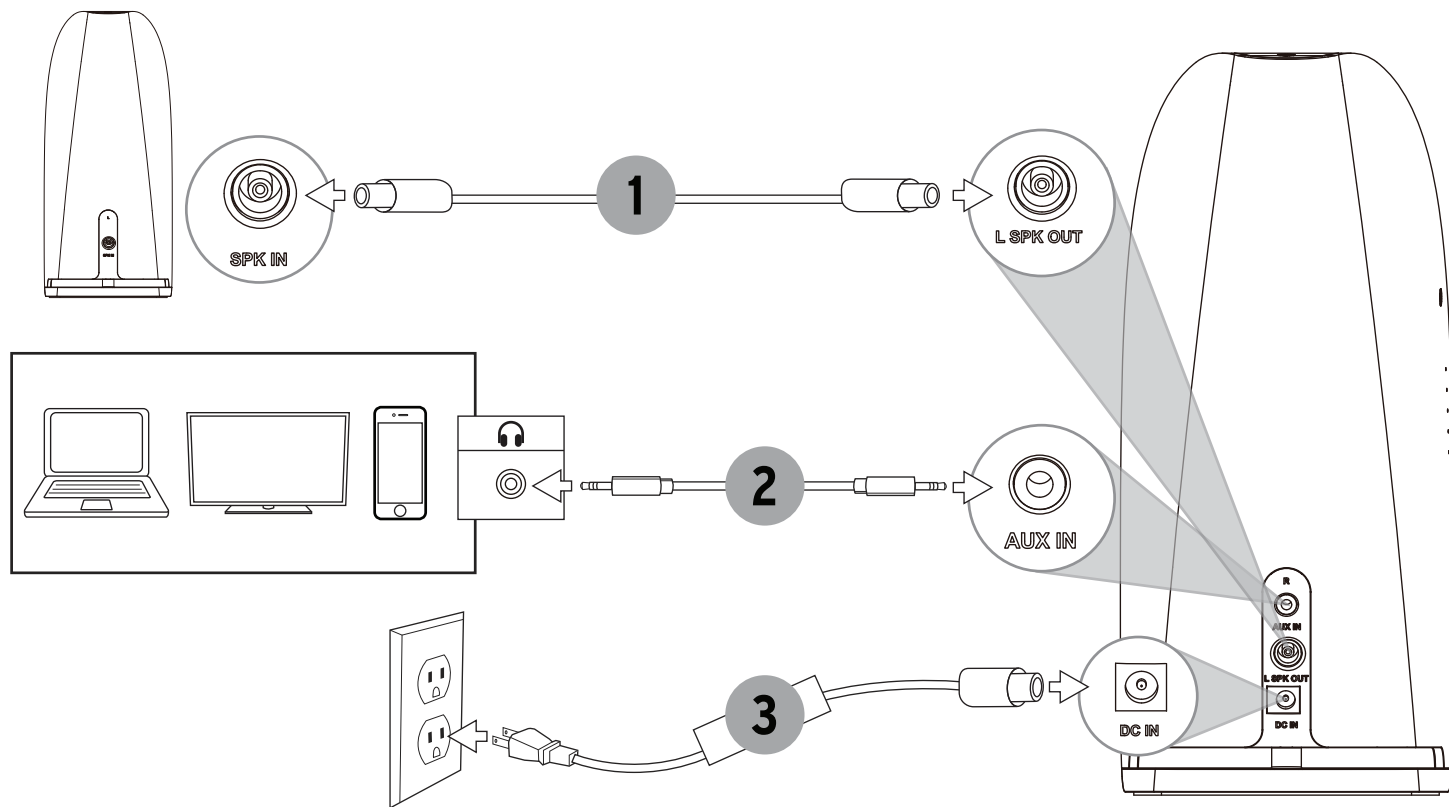
# CONTENTS

CONTENU • CONTENIDO • INHALT • CONTENUTO • CONTEÚDO • 目录



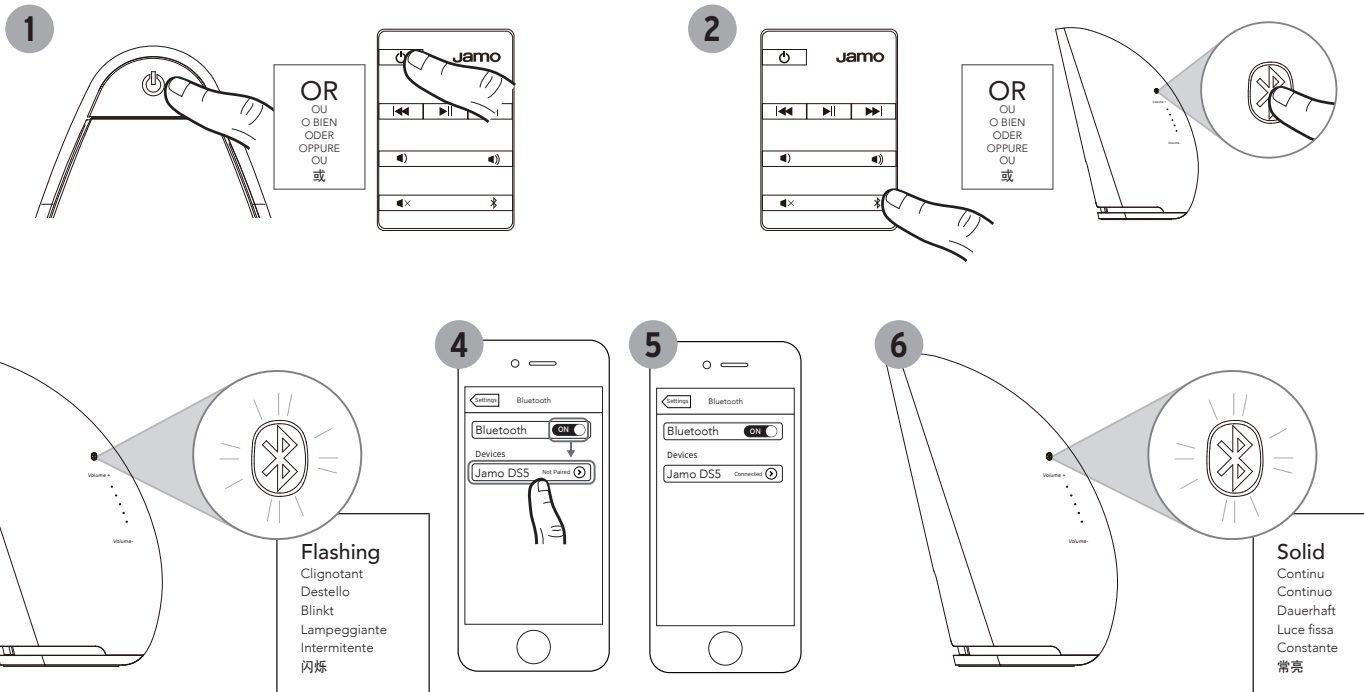
# SETUP

INSTALLATION • CONFIGURACIÓN • SETUP • INSTALLAZIONE • INSTALAÇÃO • 设置



# BLUETOOTH® WIRELESS TECHNOLOGY

TECNOLOGÍA INALÁMBRICA **BLUETOOTH®** • CONFIGURACIÓN DE TECNOLOGIA WIRELESS **BLUETOOTH®** • DRAHTLOSE **BLUETOOTH®**-TECHNOLOGIE-SETUP • CONFIGURAZIONE TECNOLOGIA WIRELESS **BLUETOOTH®** • CONFIGURAÇÃO DE TECNOLOGIA SEM FIO **BLUETOOTH®** • **BLUETOOTH®** 蓝牙无线技术

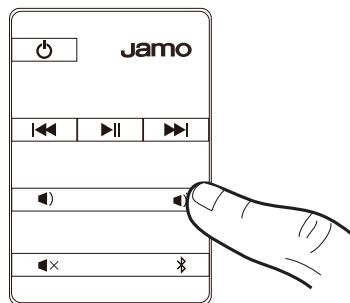


Example only. Your device may differ.

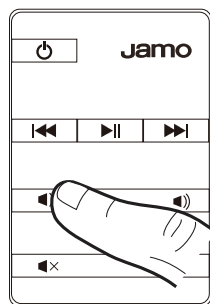
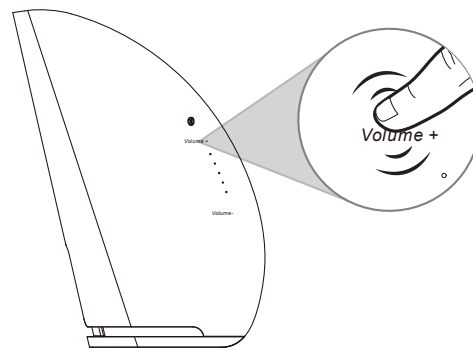
- À titre d'exemple seulement. Votre appareil peut être différent. • Este es solo un ejemplo. Es posible que su dispositivo sea diferente. • Nur als Beispiel. Ihr Gerät kann anders aussehen
- Solo a titolo esemplificativo. Lo specifico dispositivo può essere diverso. • Apenas para exemplo. O dispositivo pode ser diferente. • 仅为示例。实际设备可能有所不同

# VOLUME

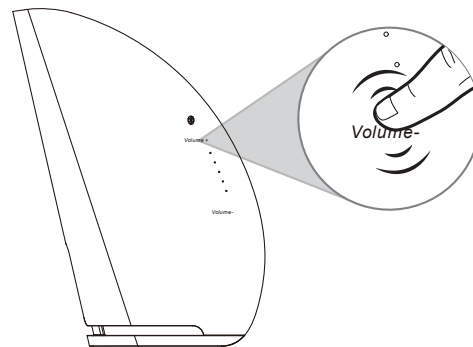
VOLUMEN 量



OR  
OU  
O BIEN  
ODER  
OPPURE  
OU  
或



OR  
OU  
O BIEN  
ODER  
OPPURE  
OU  
或



For more in-depth information and troubleshooting instructions visit [JAMO.COM/digital](https://www.jamo.com/digital)

Pour plus d'informations et des instructions de dépannage détaillées, consultez [JAMO.COM/digital](https://www.jamo.com/digital)

Hay información más detallada e instrucciones de detección y reparación de averías en [JAMO.COM/digital](https://www.jamo.com/digital)

Detalliertere Anweisungen und Hinweise zur Problembhebung finden Sie unter [JAMO.COM/digital](https://www.jamo.com/digital)

Per informazioni più dettagliate e istruzioni per la soluzione dei problemi, visitare [JAMO.COM/digital](https://www.jamo.com/digital)

Para obter informações mais detalhadas e instruções para solucionar problemas, visite o site [JAMO.COM/digital](https://www.jamo.com/digital)

欲了解更详细的信息和故障排除说明，请访问 [JAMO.COM/digital](https://www.jamo.com/digital)。

# Jamo®

©2016 KLIPSCH GROUP, INC. JAMO IS A TRADEMARK OF KLIPSCH GROUP, INC., REGISTERED IN THE US AND OTHER COUNTRIES.

THE BLUETOOTH® WORD MARK IS A REGISTERED TRADEMARK OWNED BY BLUETOOTH SIG, INC. AND ANY USE OF SUCH MARK BY KLIPSCH GROUP, INC. IS UNDER LICENSE

