

microlab



microlab

just listen



M-113 BT
User Manual



www.microlab-global.com
Microlab Electronics Co., Ltd
Made in China



Wireless Multimedia Speaker System

FCC WARNING

Warning: Changes or modifications to this unit not expressly approved by the party responsible for compliance could void the user's authority to operate the equipment.

FCC STATEMENT

NOTE: This equipment has been tested and found to comply with the limits for a Class B digital device, pursuant to Part 15 of the FCC Rules. These limits are designed to provide reasonable protection against harmful interference in a residential installation. This equipment generates, uses and can radiate radio frequency energy and, if not installed and used in accordance with the instructions, may cause harmful interference to radio communications.

However, there is no guarantee that interference will not occur in a particular installation. If this equipment does cause harmful interference to radio or television reception, which can be determined by turning the equipment off and on, the user is encouraged to try to correct the interference by one or more of the following measures:

- Reorient or relocate the receiving antenna.
- Increase the separation between the equipment and receiver.
- Connect the equipment into an outlet on a circuit different from that to which the receiver is connected.
- Consult the dealer or an experienced radio/TV technician for help.

Shielded cables must be used with this unit to ensure compliance with the Class B FCC limits.

EN
1

This device complies with Part 15 of the FCC Rules.

Operation is subject to the following two conditions:

- (1) This device may not cause harmful interference, and
- (2) This device must accept any interference received, including interference that may cause undesired operation.


Important Safety Instructions




Caution:

To reduce the risk of electric shock, do not dismantle the product and do not expose the apparatus to rain or moisture. No user-serviceable parts inside. Refer servicing to qualified personnel only.

Explanation of Graphical Symbols:

 The lightning flash within an equilateral triangle is intended to alert you to the presence of uninsulated dangerous voltage within the product's enclosure that may be of sufficient magnitude to constitute an electric shock to a person or persons.

 The exclamation point within an equilateral triangle is intended to alert you to the presence of important operating and maintenance (servicing) instructions in the literature accompanying the product.

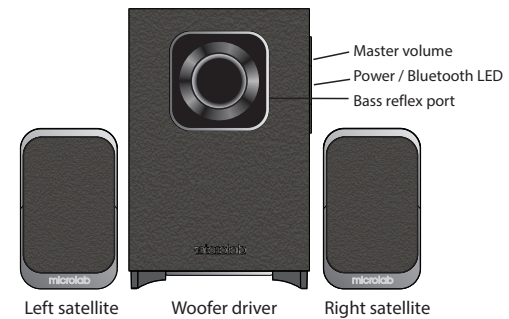
WARNINGS:

1. **Read Instructions** - All the safety and operating instructions must be read before the product is operated.
2. **Retain Instructions** - The safety and operating instructions should be kept with the product for future reference.
3. **Heed warnings** - All warnings on the product and in the operating instructions should be adhered to.
4. **Follow instructions** - All operating and users' instructions should be followed.
5. **Installation** - Install in accordance with the manufacturer's instructions.
6. **Power sources** - This product should be operated only from the type of power source indicated by the marking adjacent to the power cord entry. If you are not sure of the type of power supply to your home, consult your product dealer or local power company.
7. **Grounding or polarization** - the product is not required to be grounded. Ensure the plug is fully inserted into the wall outlet or extension cord receptacle to prevent blade or pin exposure. Some versions of the product are equipped with a power cord fitted with a polarized alternating line plug (a plug having one blade wide than the other). This plug will fit onto the power outlet only one way. This is a safety feature. If you are unable to insert the plug fully into the outlet, try reversing the plug. If the plug should still fail to fit, contact your electrician to replace your obsolete outlet. Do not defeat the safety purpose of the polarized plug. When using an extension power-supply cord or a power-supply cord other than that supplied with the appliance, it should be fitted with the appropriate molded plugs and carry safety approval appropriate to the country of use.
8. **Power cord protection** - Power-supply cords should be routed so that they are not likely to be walked on, kinked or pinched by items placed on or against them, paying particular attention to cords from plugs, receptacles and the point where they exit from the appliance.
9. **Overloading** - Do not overload wall outlets, extension cords or multiple sockets, as this can result in a risk of fire or electric shock.
10. **Ventilation** - The product must be properly ventilated. Do not place the product on a bed, sofa, or other similar surface. Do not cover the product with any items such as tablecloths, newspapers, etc.
11. **Heat** - The product should be situated away from heat sources such as radiators, heat registers, stoves, or other products including amplifiers that produce heat. No naked flame sources, such as lighted candles, should be placed on the apparatus.
12. **Water and moisture** - To reduce the risk of fire or electric shock, do not expose the product to rain, dripping, splashing or excessive moisture such as in a sauna or bathroom. Do not use this product near water, for example, near a bathtub, washbowl, kitchen sink, laundry tub, in a wet basement, or near a swimming pool, or etc.
13. **Object and Liquid Entry** - Never push objects of any kind into this product through openings, as they may touch dangerous voltage points or short-circuit parts that could result in a fire or electric shock. Never spill liquid of any kind on the product. Do not place any object containing liquid on top of the product.
14. **Cleaning** - Unplug the product from the wall outlet before cleaning. The cabinet of the subwoofer may be cleaned by dusting with a dry cloth. If you wish to use an aerosol cleaning spray, do not spray directly on the cabinet; spray onto the cloth. Be careful not to damage the drive units.
15. **Attachments** - Do not use attachments not recommended by the product manufacturers, as they may cause hazards.
16. **Accessories** - Do not place this product on an unstable cart, stand, tripod, bracket or table. The product may fall, causing serious injury to a child or adult, and serious damage to the product. Use only with a cart, stand, tripod, bracket or table recommended by the manufacturer or sold with the product. Any mounting of the product should follow the manufacturers' instructions and should use a mounting accessory recommended by the manufacturer.
17. **Moving the product** - A product and cart combination should be moved with care. Quick stops, excessive force

EN
2

Illustrations

Front View



- and uneven surfaces may cause the product and cart combination to overturn.
18. **Un-use periods** - The power cord of the device should be unplugged from the outlet during lightning storms or when the apparatus is left unused for a long period of time.
 19. **Servicing** - Do not attempt to service this product yourself, as opening or removing covers may expose you to dangerous voltage or other hazards. Refer all servicing to qualified service personnel.
 20. Please remove the power plug from the main power source or wall power source when not in use. When plugged in to a power source, the system is in standby mode, so the power is not entirely cut off.
 21. **Replacement parts** - When replacement parts are required, ensure the service technician has used replacement parts specified by the manufacturer or have the same characteristics as the original part. Unauthorized substitutions may result in fire, electric shock or other hazards.
 22. **Mains fuses** - For continued protection against fire hazard, use fuses only of the correct type and rating. The correct fuse specification for each voltage range is marked on the product.
 23. Do not turn up the volume while listening to a section with very low level inputs or no audio signals. If you do, the speaker may be damaged when a peak level section is suddenly played.
 24. The only means of completely disconnecting the product from the power supply is by removing the power cord from the wall outlet or the product. The wall outlet or the power cord entry to the product must remain freely accessible at all times while the product is in use.
 25. Try to install the product near a wall socket or extension cord and shall be easily accessible.
 26. The highest environmental temperature suitable for this product is 40°C.

Introduction

A great product for most of your listening needs, this easy to use 2.1 speaker system brings you full audio range playback. Featuring a woofer cabinet for strong bass and compact satellites for clear highs. Ideal for multimedia entertainment use in study room, bedroom or kitchen.

Stream music wirelessly from your smartphone, tablet, or notebook, or any Bluetooth enabled devices. Listen to your favourite music comfortably without any wires attached.

Built with tuned bass reflex tunnel to enhance your home theater and music experience with better sound and effects. Frontal volume control for quick adjustment.

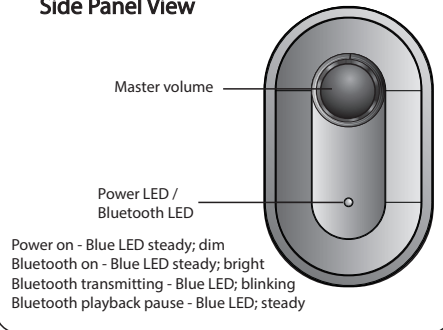
Features

- Quality 2.1 speaker system with built-in amplifier
- Bluetooth® wireless technology
- 24 Watt of acoustic power with 4" woofer and 2 x 2.5" satellites.
- Full audio spectrum performances, ideal for your favourite entertainment from Mp3, Mp4, CD/DVD movies and digital playbacks
- Connects easily to any Bluetooth enabled devices such as smartphone, tablet, or notebook.
- Specially designed woofer cabinet with bass reflex port for deeper bass
- Woofer in downward firing position for greater sound effects
- Side panel volume control for quick access
- Angled satellites for optimum listening and with stands for firm support

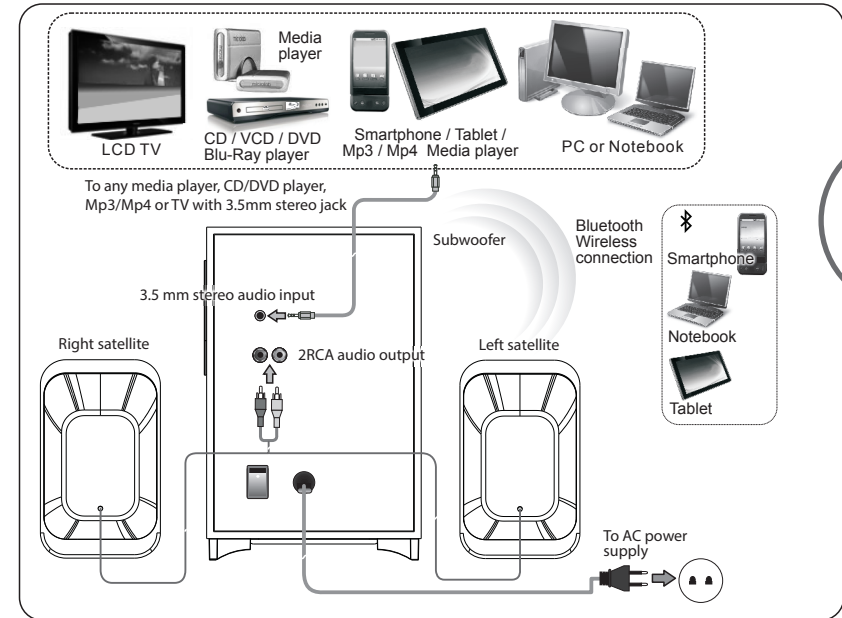
Package contents

- M-113 subwoofer cabinet 1 pc
- M-113 satellite speakers 2 pcs
- 3.5 mm - 3.5mm stereo cable 1 pc
- User manual 1 pc

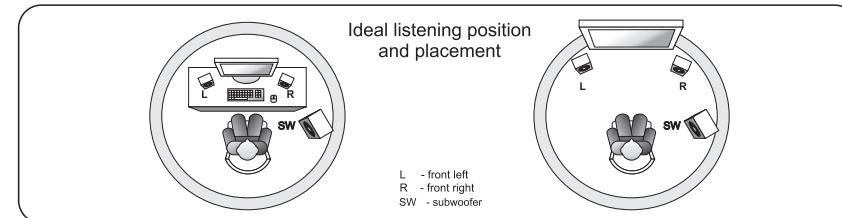
Side Panel View



Connections



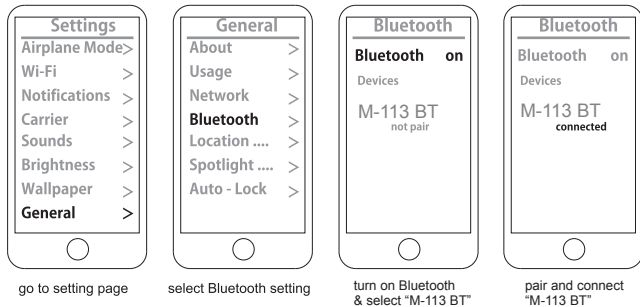
Ideal listening position and placement



Installation:

Precaution: Prior to connecting the speakers, ensure the AC power plug is removed from the AC source. Secondly, ensure the volume knob is set to zero.

1. Connect the both satellite speaker's cable (3.5mm) to the audio output at the rear panel of the subwoofer.
2. Place both satellites on extreme sides of the listening position.
3. Place the subwoofer on the floor and with its back near the wall for more bass.
4. For analog connection, connect the playback source (smartphone, tablet, Mp3/Mp4 player, DVD/Blu-ray/CD player) to the 3.5mm audio input jack.
5. Last, connect the AC power cord to the AC power supply source. Please always ensure the AC power ratings printed on the rear panel of the satellite match with your country's AC power supply ratings. If they do not match, please do not connect or turn ON the power. This will damage the speaker system.
6. For Bluetooth mode: 3 seconds after powering up, the system will go to Bluetooth pairing mode. Turn on your Bluetooth enabled device and connect to the speaker system.
7. On your Bluetooth device, under Settings - Bluetooth screen, click on search and discover the speaker system.
8. Select the speaker system and connect to it.



iPhone, iPad, or iPod

go to SETTINGS > GENERAL > enable BLUETOOTH > select "M-113 BT"

Android Phone

go to SETTINGS > WIRELESS & NETWORKS > enable BLUETOOTH > select "M-113 BT"

Others

read the instruction manual included with your device

Operation:

1. Plug the AC power plug to the wall AC source or any AC power distribution sockets.
2. Ensure the volume level is lowered to minimum.
3. Turn on the power switch located at the rear of the subwoofer. The blue LED on the side will illuminate indicating power on status.
4. If the 3.5 mm stereo jack is connected for external analog source, the blue LED will remain dim. The sound input is now through this analog connection.
5. If the 3.5 mm stereo jack remain unconnected for 3 seconds, the system will commence the Bluetooth pairing mode.
6. Turn on the Bluetooth mode on your smartphone or tablet or notebook. Pair and connect to the speaker system.
7. Start the media player and its playback audio. The Blue LED will slow blink between dim and bright intensity.
8. Slowly increase the volume to your preferred listening level. You can adjust the volume from either the media player, or the speaker's side volume knob.
9. To change modes, please turn off the power for 3 seconds and then restart again.
10. If you connect the 3.5 mm stereo jack during Bluetooth mode, the system will not revert to analog mode. It will remain in the Bluetooth streaming mode. To change to the 3.5 mm stereo (analog) mode, please turn off the speaker system for 3 seconds and turn back on again.

Amplifier

Out power power, RMS	24 Watt RMS
Power distribution, Watt	7 Watt x 2 + 10 Watt
Harmonic distortion	< 0.3% 1 W 1 kHz
Frequency response	60 Hz - 20 kHz
Signal/Noise ratio, dB	> 75 dB
Separation, dB	> 45 dB

Speaker

Tweeter driver type	2.5"
Tweeter impedance	8 Ohm
Woofer driver type	4"
Woofer impedance	4 Ohm

Interface

Input	3.5 mm stereo jack, Bluetooth® 4.0
Output	2RCA
AC IN	120V~ 60Hz 220mA

Frequently Asked Questions (FAQ)

Question	Solution
Power LED won't light up	Check if the system is powered on Check the power plug is well connected
No sound	Check if the audio source is working well Check if the audio and speaker cables are connected Check if the volume is at the right level
3.5 mm stereo plug connected, but no sound	Turn off the speaker power for about 3 seconds, then turn on again to change the connection mode.
Static sound heard when volume knob is turned	Turn off the playback source first, then turn the speaker volume knob several times. Playback again and monitor. The static noise is due to dust, so simply turning the volume will remove it easily.
What are the products supported?	Any playback devices such as PC, notebook, CD/DVD player, Media players with 3.5 mm stereo plug, or Bluetooth enabled.
Sound is distorted	Check if the source file is not corrupted, play a different song and test
If the problem still exists, please contact the distributor or ask for professional service	