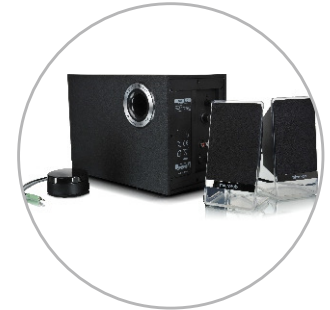


microlab

microlab

just listen



Slate

User Manual

www.microlab-global.com
Microlab Electronics Co., Ltd.
Made in China




FCC ID:OR8-SLATE
IC:21231-SLATE

Microlab Slate Bluetooth Speaker System

Prior to initial use, please read the manual carefully

Disclaimer: All symbols and logos belong to the respective brand holder or registered holder. All specifications and information are subject to changes without further notice. Slight variations and differences might appear between the printed photos and actual product due to product enhancement.

IMPORTANT SAFETY INSTRUCTIONS

1. Read these instructions.
2. Keep these instructions.
3. Heed all warnings.
4. Follow all instructions.
5. Do not use this apparatus near water.
6. Clean only with dry cloth.
7. Do not block any ventilation openings. Install in accordance with the manufacturer's instructions.
8. Do not install near any heat sources such as radiators, heat registers, stoves, or other apparatus (including amplifiers) that produce heat.
9. Do not defeat the safety purpose of the polarized or grounding-type plug. A polarized plug has two blades with one wider than the other. A grounding type plug has two blades and a third grounding prong. The wide blade or the third prong are provided for your safety. If the provided plug does not fit into your outlet, consult an electrician for replacement of the obsolete outlet.
10. Protect the power cord from being walked on or pinched particularly at plugs, convenience receptacles and the point where they exit from the apparatus. 
11. Only use attachments/accessories specified by the manufacturer.
12. Use only with the cart, stand, tripod, bracket or table specified by the manufacturer, or sold with the apparatus. When a cart is used, use caution when moving the cart/apparatus combination to avoid injury from tip-over.
13. Unplug this apparatus during lightning storms or when used for long periods of time.
14. Refer all servicing to qualified service personnel. Servicing is required when the apparatus has been damaged in any way, such as power-supply cord or plug is damaged, liquid has been spilled or objects have fallen into the apparatus, the apparatus has been exposed to rain or moisture, does not operate normally or has been dropped.

Where the MAINS plug is used as the disconnect device shall remain readily operable.

WARNING: TO PREVENT FIRE OR SHOCK HAZARD, DO NOT EXPOSE THIS APPLIANCE TO RAIN OR MOISTURE.



This equipment is a Class II or double insulated electrical appliance. It has been designed in such a way that does not require a safety connection to electrical earth.



The lightning flash with arrowhead symbol, within an equilateral triangle is intended to alert the user to the presence of uninsulated dangerous voltage within the products enclosure that may be of sufficient magnitude to constitute a risk of electric shock.



The exclamation point within an equilateral triangle is intended to alert the user to the presence of important operating and maintenance (servicing) instructions in the literature accompanying the appliance.


15. The highest environmental temperature suitable for this product is 0°C to 35°C for indoor use only .

16. Applicable to altitude below 2000 meters



DU When apparatus operation and installation instructions contain instructions contain instructions for use by service personnel, such instructions shall be separate in format from other instructions and preceded by the word "CAUTION" and the following or the equivalent. *These servicing instructions are for use by qualified service personnel only. To reduce the risk of electric shock do not perform any servicing other than that contained in the operating instructions unless you are qualified to do so*

MESURES DE SÉCURITÉ IMPORTANTES

1. Lisez ces instructions .
2. Conservez ces instructions.
3. Respectez tous les avertissements.
4. Suivez toutes les instructions.
5. N'utilisez pas cet appareil près de l'eau.
6. Nettoyez uniquement avec un linge sec.
7. Les fentes et ouvertures ne doivent jamais être bloquées ni recouvertes. Toute installation de l'appareil doit respecter les instructions du fabricant.
8. Ce produit doit être éloigné des sources de chaleur comme celles des radiateurs, des contrôleurs de chaleur, des cuisinières ou d'autres produits (incluant les amplificateurs) produisant de la chaleur.
9. Ne pas détériorer la sécurité de la fiche polarisée, ou de la fiche de terre. Une fiche dont une broche est plus large que l'autre est une fiche polarisée. Une fiche de type mise à la terre à deux broches, possédant une troisième broche de mise à la terre. La broche plus large ou mise à la terre s'agit d'une mesure de sécurité. Cette fiche se branchera à la prise de courant d'une seule manière. Si vous ne pouvez pas l'insérer complètement dans la prise, contactez un électricien pour le remplacement de la prise défectueuse.
10. Les cordons d'alimentation doivent être orientés de façon à ne pas être piétinés, ou être coincés par des objets placés sur, ou contre eux. Portez une attention particulière aux cordons à fiche, aux prises de courant adéquates et aux points où les cordons sortent du produit. 
11. Outilisez uniquement des accessoires recommandés par le fabricant.
12. Utilisez uniquement avec un chariot, un présentoir, un trépied, un support, ou une table recommandée par le fabricant, ou vendu avec le produit. La combinaison d'un appareil et d'un chariot doit être déplacée avec prudence
13. Pour plus de protection pendant un orage, ou lorsque le produit est inutilisé pour de longues périodes de temps, débranchez-le de la prise de courant.
14. Contactez toute réparation au personnel qualifié. Une réparation est requise lorsque le cordon d'alimentation ou la fiche sont endommagés, si du liquide a été renversé sur le produit, ou si un objet est tombé à l'intérieur; si le produit a été exposé à la pluie ou à l'eau, si le produit ne fonctionne pas normalement, ou si le produit a été lâché des mains.

AVERTISSEMENT : La fiche d'alimentation fonctionne en tant que dispositif de déconnexion, elle doit rester toujours prête à fonctionner.

MISE EN GARDE : POUR RÉDUIRE LE RISQUE D'INCENDIE OU DE CHOC ÉLECTRIQUE, NE PAS EXPOSER L'APPAREIL À LA PLUIE OU À L'HUMIDITÉ.



Cet équipement est de classe II ou dispose d'une isolation double, et n'exige pas de mise à la terre.



Le symbole de l'éclair et d'une flèche à l'intérieur d'un triangle équilatéral signale à l'utilisateur, la présence d'une « tension dangereuse » non isolée à l'intérieur de l'appareil, pouvant être d'une magnitude suffisante pour provoquer un choc électrique.



Le point d'exclamation à l'intérieur d'un triangle équilatéral signale à l'utilisateur la présence d'instructions importantes concernant les soins et l'entretien (réparation) incluses dans la documentation accompagnant l'appareil.

FCC and Canada EMC Compliance Information

This device complies with part 15 of the FCC Rules. Operation is subject to the following two conditions: (1) This device may not cause harmful interference, and (2) this device must accept any interference received, including interference that may cause undesired operation.

Note: This equipment has been tested and found to comply with the limits for a Class B digital device, pursuant to part 15 of the FCC Rules. These limits are designed to provide reasonable protection against harmful interference in a residential installation. This equipment generates uses and can radiate radio frequency energy and, if not installed and used in accordance with the instructions, may cause harmful interference to radio communications. However, there is no guarantee that interference will not occur in a particular installation. If this equipment does cause harmful interference to radio or television reception, which can be determined by turning the equipment off and on, the user is encouraged to try to correct the interference by one or more of the following measures:

Reorient or relocate the receiving antenna.

Increase the separation between the equipment and receiver.

Connect the equipment into an outlet on a circuit different from that to which the receiver is connected.

Consult the dealer or an experienced radio/TV technician for help.

Any Changes or modifications not expressly approved by the party responsible for compliance could void the user's authority to operate the equipment.

The device has been evaluated to meet general RF exposure requirement. The device can be used in portable exposure condition without restriction.

This device complies with Industry Canada licence-exempt RSS standard(s).

Operation is subject to the following two conditions: (1) This device may not cause interference, and (2) This device must accept any interference, including interference that may cause undesired operation of the device.

Le présent appareil est conforme aux CNR d'Industrie Canada applicables aux appareils radio exempts de licence. L'exploitation est autorisée aux deux conditions suivantes:

(1) l'appareil ne doit pas produire de brouillage, et

(2) l'utilisateur de l'appareil doit accepter tout brouillage radioélectrique subi, même si le brouillage est susceptible d'en compromettre le fonctionnement.

L'appareil a été évalué pour répondre aux exigences générales d'exposition aux RF. L'appareil peut être utilisé dans une condition d'exposition portable sans restriction.

EN
3

Introduction

Beautifully designed 2.1 speaker system with powerful sound. Power your multimedia player with this system and listen to clear sound. Comes with two stereo satellites for highs and mids sound reproduction. Ultra-low frequency subwoofer with bass reflex tunnel for deeper sound and bass effects.

This platinum version features a beautifully crafted subwoofer cabinet and acrylic satellite speakers. ideal for music appreciation and entertainment. Connects easily to your media player via universal 3.5 mm stereo plug.

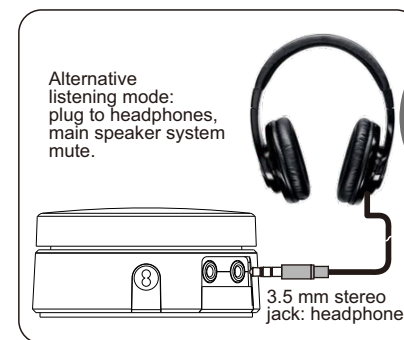
Features wired remote control for quick master volume control, and interfaces for audio input and headphones connections.

Features

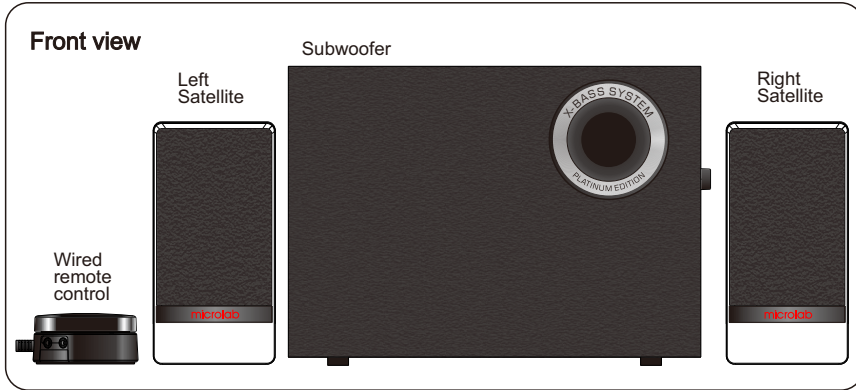
- Powerful 2.1 speaker system
- Perfect for multimedia player and PC
- High quality speaker drivers used for quality sound characteristics
- Full audio spectrum performances, ideal for your favourite entertainment from Mp3, Mp4, CD/DVD movies and digital playbacks
- Bass reflex tunnel built-in subwoofer for deep bass and vocals
- Wired remote control with rotary volume dial
- Audio input jack - 3.5 mm stereo
- Headphones jack for private listening

Package contents

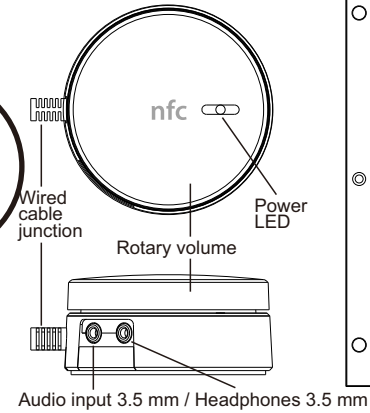
- | | |
|-----------------------|-------|
| • Slate subwoofer | 1 pc |
| • Slate satellites | 2 pcs |
| • Slate wired control | 1 pc |
| • User manual | 1 pc |



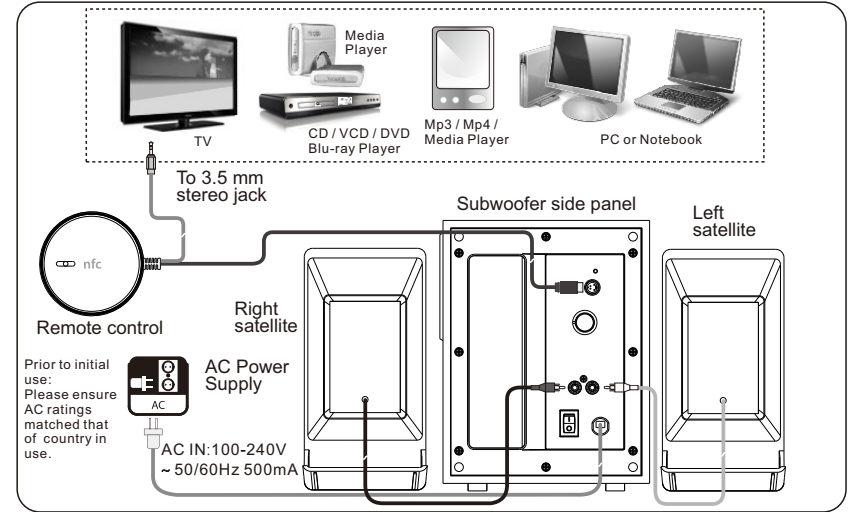
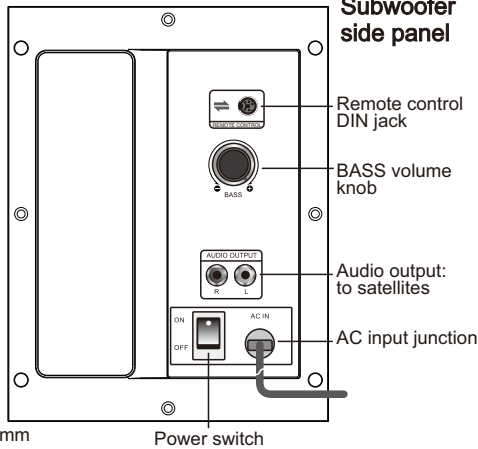
EN
4



Remote control



Subwoofer side panel



Connections and Operation

Connections

Prior to connecting the speakers, ensure the AC power plug is unplugged from the AC source. Secondly ensure the volume knob is set to minimum.

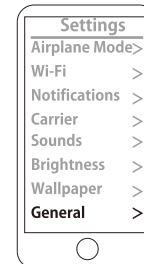
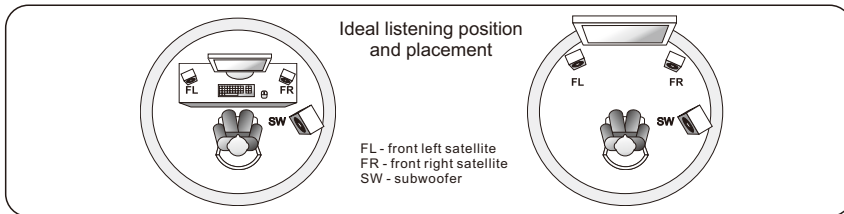
1. Connect the satellites to the left and right RCA outputs at the side panel of the subwoofer.
2. Place both satellites on extreme sides of the listening position. Place the subwoofer on the floor and with its back near the wall for more bass.
3. Connect the AC power cord to the power supply source.
4. Please ensure the AC power supply match the power requirement printed at the side panel.

Wireless (Bluetooth®)

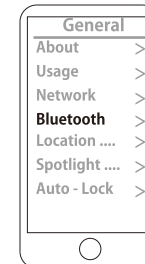
1. Please turn on the speaker system with the power switch situated at the side panel of the subwoofer.
2. The system will commence the Bluetooth® pairing process immediately. Please note that the system will always default to this process everytime it is turned on.
3. Have your Bluetooth® enabled device activated for Bluetooth broadcast. For connection to the speaker system, please ensure the Bluetooth® device supports A2DP profile.
4. Once your device detects the system, it should display the "Slate" name on its display screen.
5. Select *pairing*, and then *connect* functions to commence the A2DP audio streaming mode. The blue LED will illuminate steadily.

EN
5

EN
6



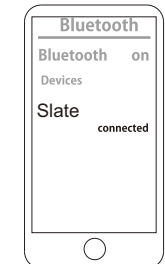
go to setting page



select Bluetooth setting



turn on Bluetooth & select Slate



pair and connect Slate

- To disable the mode, simply *disconnect* the Bluetooth® connection in your device.

Continued

Analog

- Connect the 3.5 mm plug end from the wired remote control to your media device, such as Mp3/Mp4, CD/DVD player, LCD TV, smartphone, tablet, or notebook.
- Please ensure any connected Bluetooth® device is turned off, else the signal will continue to stream via Bluetooth® mode.
- Alternatively, you can connect a 3.5 mm plug from the media player to the side of the wired remote control.

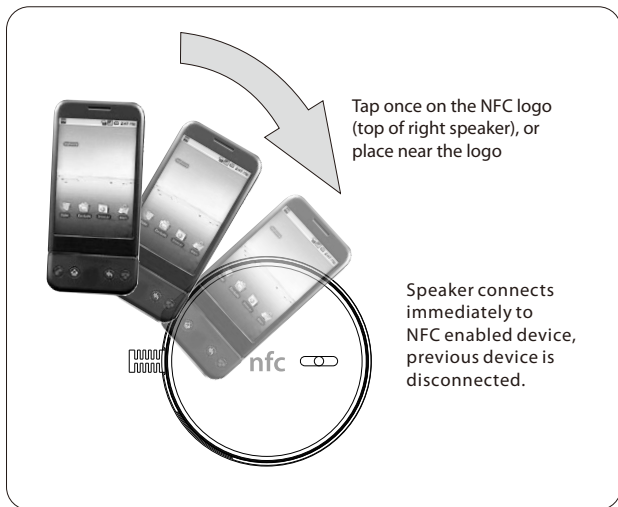
Operations

- Ensure the master volume is at the lowest setting.
- Turn on the main AC power and switch on the speaker system from the rear power switch.
- Start the media player and song. For Bluetooth® enabled device, please start the music playback apps. For Analog connection, start the playback from the Mp3/Mp4 player or notebook, etc.
- Adjust the volume on the media player, and speaker's master volume to your preferred listening level. The master volume is located at the side panel of the right speaker.
- For added sound effects, you can adjust the bass levels on the side panel.
- Note: it is advisable not to turn the volume too loud or to its extreme volume limit to avoid damage to the speaker driver material and impair your hearing. Always adjust in slow increment.
- The system will conserve energy if there are no audio signal detected after 20 minutes. It will enter sleep mode till it detects audio signal again. The LED will blink slowly in red colour if it is in AUX mode, and in blue colour if it is in *Bluetooth®* mode.

NFC (Nearfield communication)

This function allows any NFC enabled device to easily connect to the speaker system by placing near the NFC logo.

- To use the NFC function, just tap the NFC enabled device on the NFC logo at the top of the remote control.
- This will connect the system to this device, and disconnect any previous connected device.
- Once connected, you can commence the music playback as mentioned above.



Technical Information

Amplifier

Output power, RMS	50 Watt RMS
Power distribution, Watt	12 Watt x 2+ 26 Watt RMS
Harmonic distortion	< 0.5% 1 W 1 kHz
Frequency response	35 Hz - 20 kHz
Signal/Noise ratio, dB	> 75 dB
Separation, dB	> 40 dB

Speakers

Tweeter driver type:	2.5"
Tweeter impedance:	4 Ohm
Woofers driver type:	5.25"
Woofers impedance:	8 Ohm

Interfaces

Output	2RCA, Output 2 - remote control: 3.5 mm Headphones
Input	DIN jack, Input 2 - remote control: 3.5 mm stereo
Wireless	NFC supported

Troubleshooting

Questions	Solutions
Power LED won't light up	Check if the main power is turned on Check if all connectors are properly inserted
No sound heard	Check if the audio source is working well Check if the media player is playing the audio source Check if the volume level is turned up
One or more satellite no sound	Check if the satellite cables are not kinked and properly connected. Check source cable is correctly inserted to the correct jack.
Sound is distorted or unclear	Ensure the media file or format is of the supported type. Ensure the bit rate recorded on the digital file is above 192 Kbps, for clearer reproduction. Check all cables for damaged or failed copper wire.
What are the products supported?	Any media player with 3.5 mm stereo jack such as smartphones, tablets, Mp3/Mp4 players, CD/DVD players, LCD TV, PC or notebooks. For NFC, the media device must be NFC enabled.
What the perfect location to place the subwoofer?	Subwoofer is non-directional, so it can be placed anywhere. But for deeper bass, it is preferably to place it on the floor and with its back to the wall.
If the problem still exists, please contact the distributor or ask for professional service	

Alternative input connection:
via 3.5 mm stereo jack on remote control

