

## PRIME AT (VL1000) Quick Start

**Product Name: GPS Tracker**

**Model Name: PRIME AT (VL1000)**

**Date: 20110609**



## Product Function Description

**PRIME AT (VL1000) is a powerful GPS Locator with mini size, light weight and superior sensitive receiving ability, fast TTFF, more accuracy, low power consumption. The VL1000 has 2 press buttons, one for the SOS and another for power on/off. Its location can be real time tracked through internet or specified terminals. User can communicate with the service provider through GPRS/GSM network, transfer information of Emergency, Geo-Fence, Remote Control, Motion Detection, Freefall Detection and Lower power detection.**

**PRIME AT (VL1000) is designed for many applications, such as vehicle, human body or pets.**

**This device complies with part 15B, part 22 and part 24 of the FCC rules. Operation is subject to the following two conditions: (1) this device may not cause harmful interference (2) this device must accept any interference, including interference that may cause undesired operation.**

### **WARNING**

**Changes or modifications to this unit not expressly approved by the party responsible for compliance could void the user's authority to operate the equipment.**

## Part 1: Product Overview And Basic Operation


**1 Part List**



PRIME AT (VL1000)      AC-DC charge

Data and Charge cable


**2 Product overview**



GSM LED      Power LED      GPS LED      SIM Cover

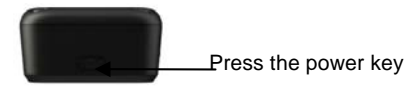
SOS Key      USB Cover      Power Key

**3 SIMCard Install**



screw up simcard cover      screw down simcard cover

**4 Turn on PRIME AT (VL1000)**



Press the power key

**5 Install the Data cable driver**

Find the data cable driver "PL-2303 driver Installer.exe", and install the drive for the data cable



PL-2303 Driver Installer Program

Welcome to the InstallShield Wizard for PL-2303 USB-to-Serial

The InstallShield Wizard will install PL-2303 USB-to-Serial on your computer. To continue, click Next.

< Back      Next >      Cancel

**6 Connect To PC**



Mini USB      Main Port

**7 Charge**

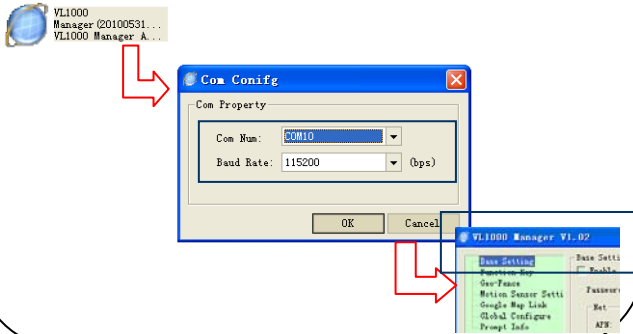


Mini USB      Main port

## Part 2: PRIME AT (VL1000) tools application

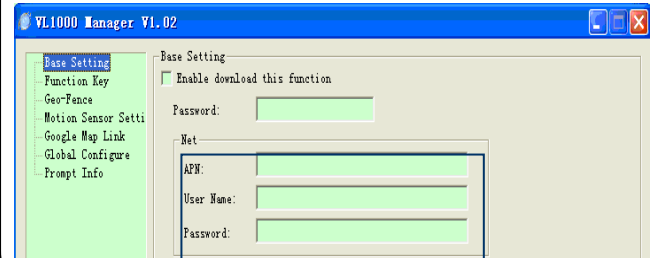
### 1 Main windows and Version

Run the "VL1000 Manager(201005311546).exe" and the main windows is showed as below. The version is V1.02 now. Select the port for the communicated and the Baud rate is 115200



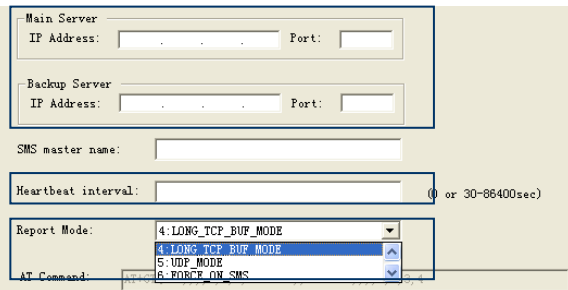
### 2 Basic configure

Select the "Enable download this function" and input the public password "VL1000". Then contact with the operator and get the APN information for the GPRS.



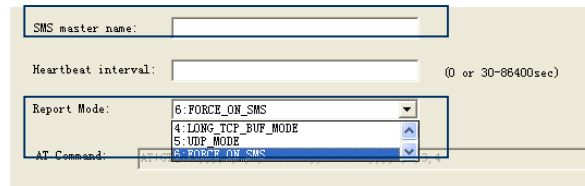
### 3 PRIME AT (VL1000) Is Tested By GPRS

When the "Basic configure" finished, select the report mode for NO4: Long\_TCP\_BUF\_MODE, then set the main server IP and the backup server IP for the listening



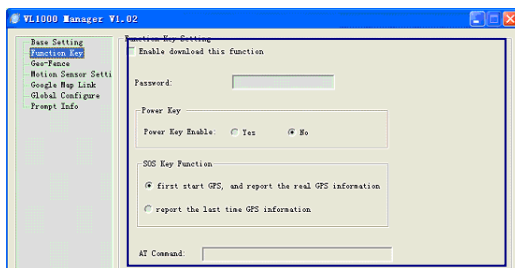
### 4 PRIME AT (VL1000) Is Tested By SMS

When the "Basic configure" finished, select the report mode for NO6: Force On SMS and set the SMS gate



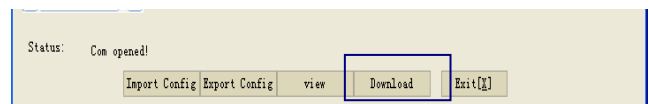
### 5 SOS Key Configure

Select the "Function Key" and Select the "Enable download this function", then input the password. Normally, choose "yes" for the power key enable and you can choose one of the two modes: "First Start GPS, and report the real GPS information" and "report the last time GPS information"



### 6

After these steps, press the download button as below and the SOS function was ready for testing



More test examples please refer to the document "VL1000 Manager Tool User Guide V1.01.doc"