

Tracker

Bolt Mini-2 User Manual

Revision: 1.00

| | |
|----------------------------|--------------------------------|
| Document Title | <i>BOLT MINI-2 User manual</i> |
| Version | <i>1.00</i> |
| Finale Date | <i>2018-04-09</i> |
| Status | <i>Released</i> |
| Document Control ID | <i>TRACKER BOLT MINI-2</i> |

Contents

| | |
|--|---|
| 1 Introduction..... | 3 |
| 2 Product Overview | 3 |
| 2.1 Appearance..... | 3 |
| 2.2 LED Description | 4 |
| 3 Getting Started | 5 |
| 3.1 Parts List | 5 |
| 3.2 How GPS position Fix | 5 |
| 3.3 Disassemble Introduction..... | 5 |
| 3.4 Insert SIM Card..... | 7 |
| 3.5 Device Power on | 8 |
| 3.6 Install..... | 8 |
| 4 Wi-Fi introduction..... | 8 |
| 5 Trouble shooting and Safety info | 9 |
| 5.1 Trouble shooting | 9 |
| 5.2 Safety info | 9 |

1 Introduction

BOLT MINI-2 use primary batteries. it is a powerful GPS locator which is designed for vehicle, and assets tracking . With superior receiving sensitivity, Its location can be real time or schedule tracked by backend server or specified terminals. Based on the embedded wireless tracking protocol, BOLT MINI-2 can communicate with the backend server through LTE Cat-M network, and transfer reports of emergency, Geo-fencing, device status and scheduled GPS position etc... Service provider is easy to setup their tracking platform based on the functional wireless tracking protocol.

2 Product Overview

2.1 Appearance



Figure 2-1

2.2 LED Description



Figure 2-2

There is one tricolour LED lights in BOLT MINI-2 device, the description as following.

| Light | Event | State |
|----------------|--------------|------------|
| LED show blue | GPS fixed | Solid |
| LED show red | low power | Solid |
| LED show green | standby mode | Slow Flash |
| | During Call | Solid |

3 Getting Started

3.1 Parts List

| Name | Picture | Remark |
|-------------|---|----------------------|
| BOLT MINI-2 |  | The LTE/GPS locator. |

3.2 How GPS position Fix

Your device has an unobstructed view of the sky, lying face up, so it can obtain the initial GPS Fix



Figure 3-1

3.3 Disassemble Introduction

1. Dismantling machine tools:
Tweezers、 Cross Screwdriver

2. Machine appearance:



Figure 3-2

3. Disconnect the screw plug



Figure 3-3

4. Disconnect the screw



Figure 3-4

5. Tear down the base

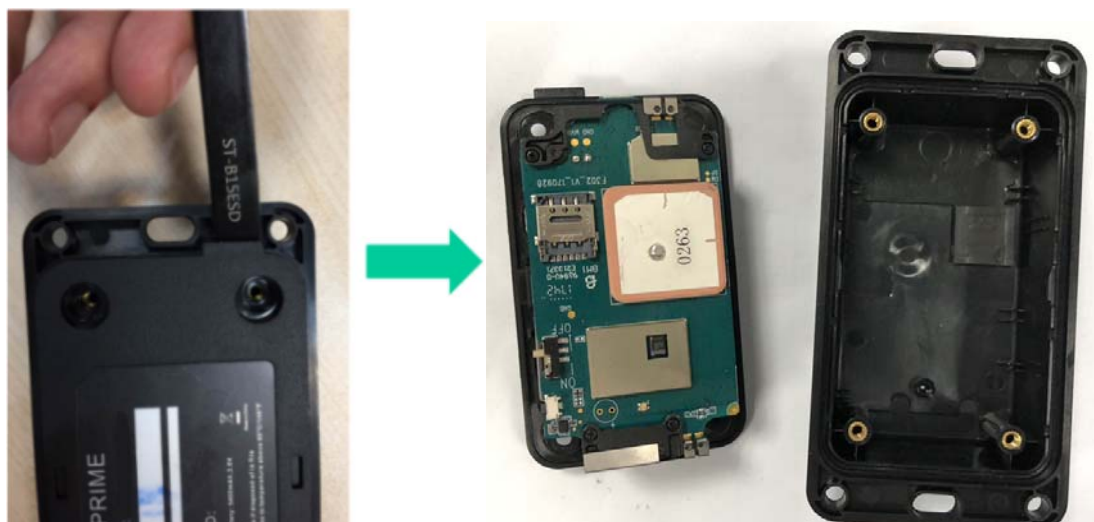


Figure 3-5

3.4 Insert SIM Card

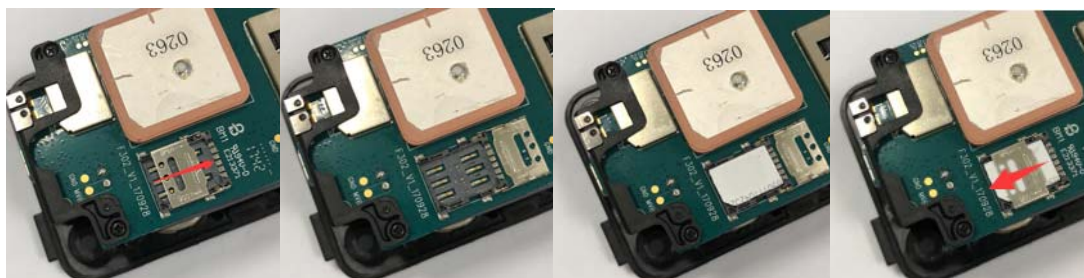


Figure 3-6

3.5 Device Power on

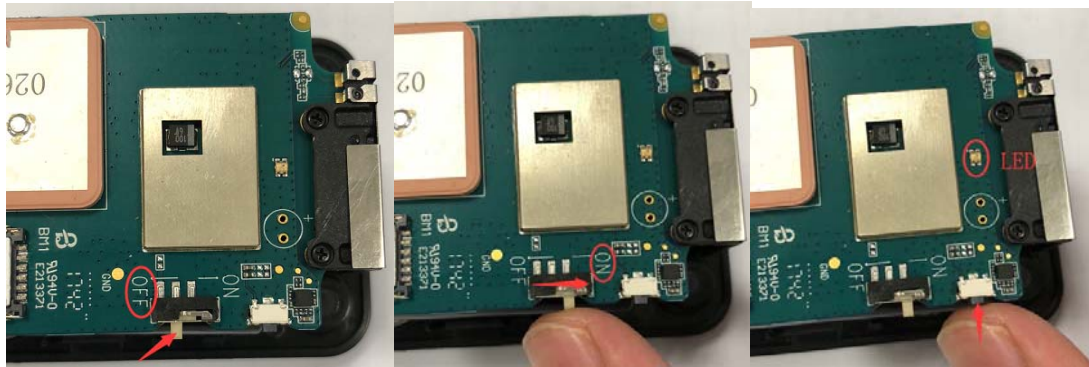


Figure 3-7

3.6 Install

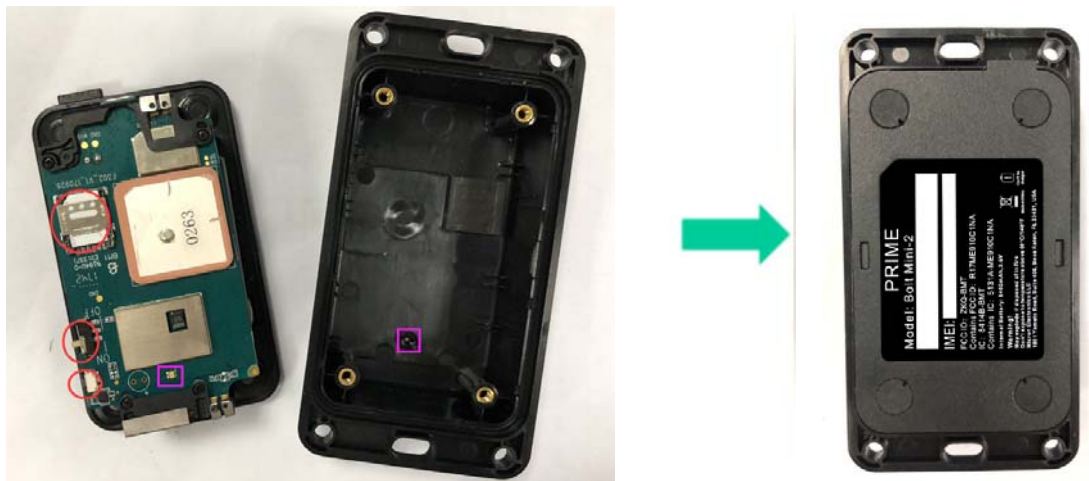


Figure 3-8

4 Wi-Fi introduction

The device role of WIFI could be Master and Slave.

When the device role is Master, the device will provide below services: the others devices can read or use the above services after connecting devices, connect the designated device to read the data or related information of the designated WIFI devices. After reading the data, the server can be reported to the server by the corresponding message.

5 Trouble shooting and Safety info

5.1 Trouble shooting

| Trouble | Possible Reason | Solution |
|---|---|---|
| Messages can't be reported to the backend server by Mobile network. | APN is wrong. Some APN can not visit the internet directly. | Ask the network operator for the right APN. |
| | The IP address or port of the backend server is wrong. | Make sure the IP address for the backend server is an identified address in the internet. |
| Unable to power off BOLT MINI-2. | The function of power key was disabled by AT+GTFKS. | Enable the function of power key by AT+GTFKS. |
| BOLT MINI-2 can't fix GPS successfully. | The GPS signal is weak. | Please move BOLT MINI-2 to a place with open sky. |
| | | It is better to let the top surface face to the sky. (The same surface with indication LED) |

5.2 Safety info

The following items are suggestion for safety use, please pay more attention.

- ◆ Please do not disassemble the device by yourself.
- ◆ Please do not put the device on the overheating or too humid place, avoid exposure to direct sunlight. Too high temperature will damage the device or even cause the battery explosion.
- ◆ Please do not use BOLT MINI-2 on the airplane or near medical equipment.

Frequency

LTE CatM:B2(TX 1850-1910MHz,RX 1930-1990MHz)

LTE CatM:B4(TX 1710-1755MHz,RX 2110-2155MHz)

LTE CatM:B12(TX 699-716MHz,RX 729-746MHz)

GPS:1575.42MHz

WIFI:802.11b/g/n-HT20: 2412-2462 MHz

802.11n-HT40:2422-2452MHz

FCC Statement

Any Changes or modifications not expressly approved by the party responsible for compliance could void the user's authority to operate the equipment.

This device complies with part 15 of the FCC Rules. Operation is subject to the following two conditions:

- (1) This device may not cause harmful interference, and
- (2) This device must accept any interference received, including interference that may cause undesired operation.

FCC Radiation Exposure Statement:

This equipment complies with FCC radiation exposure limits set forth for an uncontrolled environment. This equipment should be installed and operated with minimum distance 20cm between the radiator & your body.

ISED RSS Warning:

This device complies with Innovation, Science and Economic Development Canada licence-exempt RSS standard(s). Operation is subject to the following two conditions: (1) this device may not cause interference, and (2) this device must accept any interference, including interference that may cause undesired operation of the device.

Le présent appareil est conforme aux CNR d'ISED applicables aux appareils radio exempts de licence. L'exploitation est autorisée aux deux conditions suivantes:

- (1) l'appareil ne doit pas produire de brouillage, et
- (2) l'utilisateur de l'appareil doit accepter tout brouillage radioélectrique subi, même si le brouillage est susceptible d'en compromettre le fonctionnement.

ISED RF exposure statement:

This equipment complies with ISED radiation exposure limits set forth for an uncontrolled environment.

This equipment should be installed and operated with minimum distance 20cm between the radiator & your body. This transmitter must not be co-located or operating in conjunction with any other antenna or transmitter. Le rayonnement de la classe b respecte ISED fixaient un environnement non contrôlés. Installation et mise en œuvre de ce matériel devrait avec échangeur distance minimale entre 20 cm ton corps. Lanceurs ou ne peuvent pas coexister cette antenne ou capteurs avec d'autres.