

PRODUCT

LVS-9585:

LVS-9585 is a high-performance handheld solution for off-line barcode verification to ISO/IEC, ANSI, and GS1 standards. Featuring a high-resolution 5.0 megapixel camera, the LVS-9585 reads and analyzes linear (1D) and two-dimensional (2D) codes up to 3.0 inches (76.19 mm) wide and up to 2.25 inches (57.15 mm) tall. 1D and 2D direct part marks (DPM) of up to 1.75" x 1.75" (44 mm x 44 mm) can be verified to ISO, GS1, and MIL-STD-130 standards. Red dome, white dome, and 30 degree red angle lighting is automatically cycled by the software to find the setting that is best for verifying a specific direct part mark. LVS-9585 can be used for both DPM and traditional label verification applications.



DPM Markets and Applications

Medical

- Implantable (DPM optional)
 - Valves
 - Electronics (Pacemakers, Defibrillators)
 - Hardware (Screws, bolts, rods, plates)
- Medical Instruments
 - Catheters
 - Dental Tools
 - Surgical Tools
 - Other re-usable/sterilized devices



Automotive

- Engine and Drivetrain
- Steering and braking systems
- Body and chassis
- Wheels and Tires



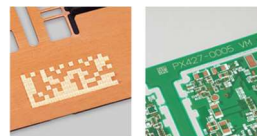
Aerospace and Defense

- Aircraft components



Electronics

- PCBs



Food Packaging

- Inkjet on foil

MICROSCAN®

Key Features

- Mobile / easy to bring to the part being verified
- Powerful software (on PC) that provides comprehensive mark quality analysis, report creation, and interface to external databases
- Ability to use for both DPM parts as well as printed labels, testing to a broad variety of global application standards including GS1, ISO 15415/15416, ISO/IEC TR29158, and MIL-STD130N with a single verifier
- Easy / 1 button push auto-cycling of different lighting options to easily match the correct lighting with the type of mark and substrate that has been marked
- Large field of view allows for grading of larger dpm marks and multiple symbols on a printed labels using multi-sector feature
- Optional mounting stand allows for securing LVS-9580/9585 in place for consistent verification of similar parts

LVS-9580/9585 Product Family Comparison

Features	9580	9580 DPM	9585 DPM
Portable Handheld Verification	•	•	•
1D or 2D Symbol Verification	•	•	•
DPM Verification (TR 29158 /AIM DPM)		•	•
MIL-STD 130N Change 1 UID/UII Validation (DPM)		•	•
Maximum Symbol Size	3in x 2.25in (76.19mm x 57.15mm)	1.75in x 1.75in (44.45mm)	1.75in x 1.75in (44.45mm)
Camera Sensor	5 MP	5 MP	5 MP
Lighting	Red Dome	Red Dome	Red Dome, White Dome, 30 angle
Grading Modes	Auto-sector, Auto, Manual	Auto-sector only	Auto-sector only
Remote trigger capability		• (CTRL + SHFT)	• (CTRL + SHFT)
2D symbol “omni directional” (symbol edge >5 degrees from level)	•		
Auto-find of DPM symbol		•	•
Software Upgrade Options 1D/2D to DPM	•	•	N/A
Certified by GS1 US	•	pending	pending
Mounting stand accessory	•	•	•

KEY DIFFERENTIATION

Key differentiators and talking points:

1. Are you impacted by the September 2018 FDA UDI for Class II Medical Device requiring DPM deadline?
 - LVS-9585 provides verification to GS1 General Specification Table 6 and Table7, covering both printed labels and direct part marking applications. A single verifier can be



used for both types of applications, with a simple change in the application standard setting to quickly and accurately verify both DPM 2D codes as well as 1D and 2D non-DPM codes.

Advantage: Microscan LVS-9585

2. Are you verifying direct part marks on challenging surfaces such as dot peen on stainless steel or laser etch marks with poor contrast?
 - LVS-9585 provides red dome, white dome, and 30 degree red angle lighting designed to work with a broad variety of marking technologies and materials, ranging from stainless steel, to plastics, to composite materials with a variety of part finishes. The software automatically finds the mark within the field of view and cycles through the lighting modes to find the lighting that works best for a given part.

Advantage: Microscan LVS-9585

3. Is 21 CFR Part 11 compliance or tracking and tracing of your processes important to you?
 - LVS-9585 software includes multi-level password protection for configuration settings, an audit trail, calibration log, calibration expiration alerts, and a data archive. Used by most of the largest multi-national Medical Device Manufacturers, the LVS-95xx product family has been proven to fit into a variety of regulated market applications.

Advantage: Microscan LVS-9585

4. Is reporting or archiving of barcode verification results important for your manufacturing process?
 - LVS-9585, as with other LVS-95xx models, allows you to automatically print as well as archive the grading result via the auto-print functionality. Further, the data archive can be backed up to a network folder, exported as a .csv file into applications such as Excel, or even interfaced with an external SQL database.

Advantage: Microscan LVS-9585

5. Is your manufacturing operation such that a mobile verifier will provide advantages?
 - The compact LVS-9585 provides the flexibility to easily move the verifier from one area of the factory to another, enabling you to quickly set up a verification station in various locations of your factory. For applications where a more fixed verification arrangement is desired, the optional mounting stand provides a convenient and sturdy fixture for positioning LVS-9585 in an orientation that works best for a variety of parts sizes and shapes.

Advantage: Microscan LVS-9585

MICROSCAN®

PART NUMBERS AND PRICING

Part Number	Description	USD List	Euro List	Type
Products				
9585-DPM	LVS-9585 Handheld, 1D, 2D & DPM Barcode Verification, Red and White Light	\$7,495	€ 6,745	P
Accessories/Upgrades				
98-CAL020	Calibration Conformance Test Card, EAN/UPC	\$525	€ 470	A
98-CAL021	Calibration Conformance Test Card, GS1-128	\$525	€ 470	A
98-CAL010	Conformance Test Card, Data Matrix (2D)	\$625	€ 580	A
98-CAL004	Conformance Test Card, GS1-DataBar	\$525	€ 470	A
98-SOF0039	LVS-9510 and LVS-958x Multi-Sector Verification	\$505	€ 480	A
98-SOF0056	Automatic Login (removes 21 CFR Compliance)	\$305	€ 290	A
98-SOF0088	EAIV (Enhanced Application Identifier Verification), w/ 30 minute training session	\$705	€ 670	A
98-9000125-01	LVS-9580/9585 stand	\$695	€ 625	A
Training/Services				
98-LVS0076	Validation IQ-OQ Guidelines (with 25 test cards)	\$3,125	€ 2,880	A
98-LVS-VTC	Validation Test Cards (25 test cards)	\$595	€ 480	A
98-LVS-BVS	Barcode Verification Service (\$ 50 set-up fee not included)	\$25	€ 25	A
98-LVS-LVC	Label Verification Consultation	\$250	€ 230	A
98-12EW-VER	12 Mo Ext Warr, LVS-95XX	\$795	€ 795	A
98-24EW-VER	24 Mo Ext Warr, LVS-95XX	\$995	€ 995	A
98-SC-LVS95XX-PLATINUM	Support Contract, LVS 95XX, Platinum	\$195	€ 195	A

Further information can be found in the Microscan download center or via visiting <http://www.microscan.com/LVS-9585>

