


MICROSCAN®

LVS-95XX Software 4.1.0f – Release Notes

Summary:

LVS-95XX Software, Microscan's proprietary 1D and 2D symbol verification software, provides an intuitive way to verify virtually any symbology to a wide variety of standards. LVS-95XX Software supports Windows® 7 Professional or Windows® 8.1 Professional. This version of LVS-95XX Software includes general enhancements to allow greater accuracy and efficiency of symbol verification.



Feature	Description	Benefits
<p>Support Added for LVS-9580 DPM Verifier</p> 	<p>LVS-9580 DPM support now available in LVS-95XX Software.</p>	<ul style="list-style-type: none"> • User interface updates for LVS-9580 DPM support. • Updated LVS-9580 user documentation.

<p>General Improvements</p>	<p>Multiple functionality and performance improvements</p>	<ul style="list-style-type: none"> • User interface enhancements. • Firmware enhancements.
------------------------------------	--	--

Note: Please see the following pages for more detail about **updates and improvements** and **version history**.

LVS-95XX Software Features

- Comprehensive support of symbologies and verification standards.
- Intuitive user interface.
- Software upgrade options include Multi-Sector Barcode Verification and Enhanced Application Identifier Verification (EAIV).

www.microscan.com

Microscan Systems, Inc.
 Tel 425 226 5700 / 800 251 7711
 Fax 425 226 8250

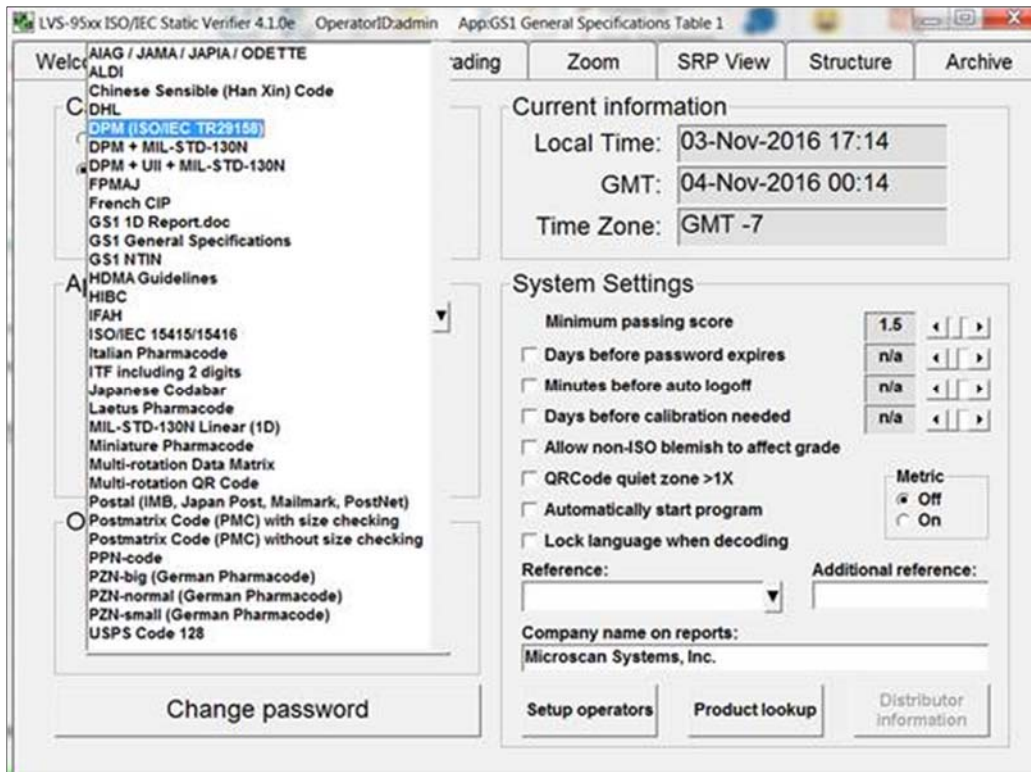
Microscan Europe
 Tel 31 172 4233 60 / Fax 31 172 4233 66

Microscan Asia Pacific
 Tel 65 6846 1214 / Fax 65 6846 4641

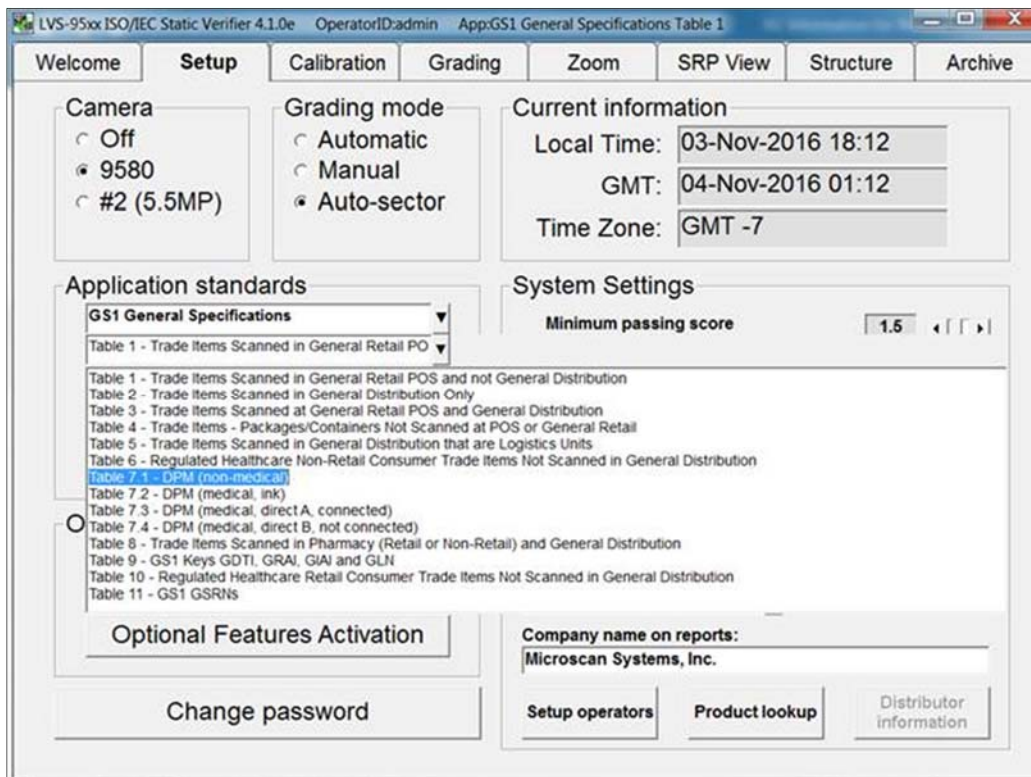
Product Information: info@microscan.com
Technical Support: helpdesk@microscan.com

New Features

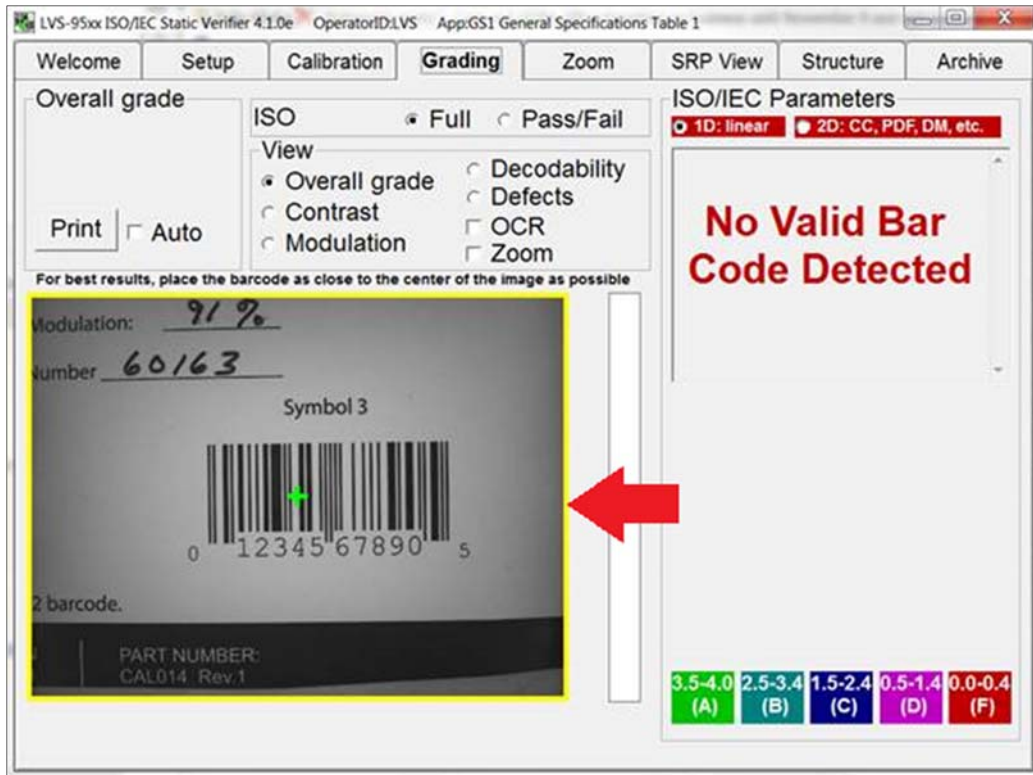
- Support added for LVS-9580 DPM functionality.



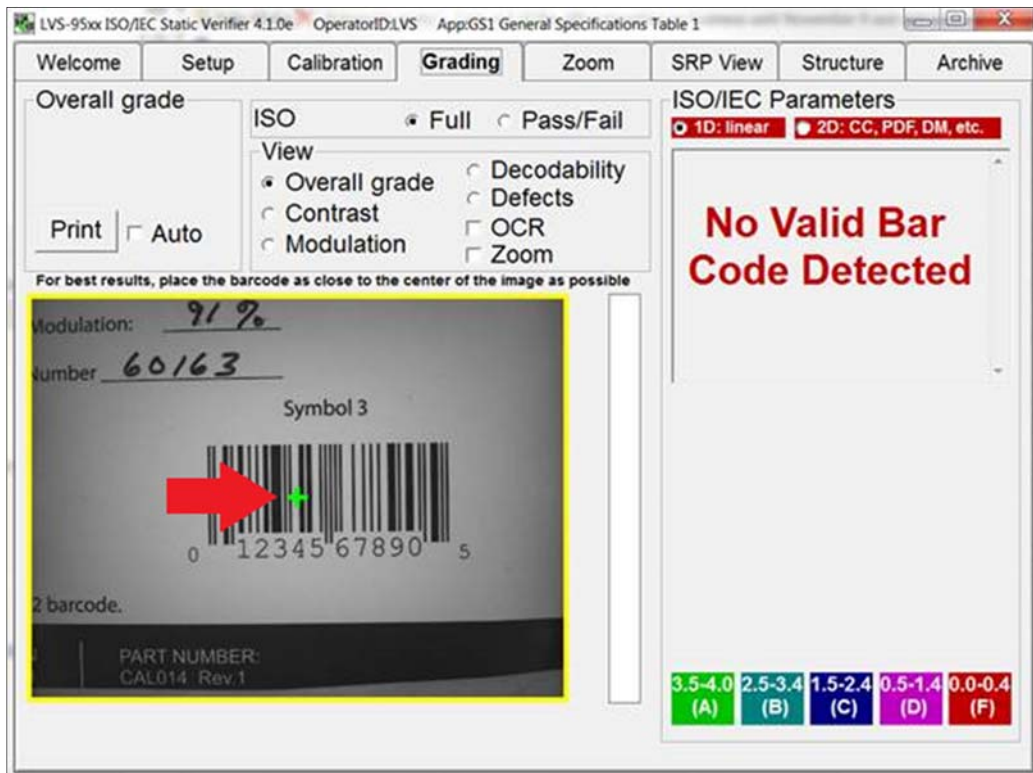
- Support added for GS1 DPM Table 7 rules.



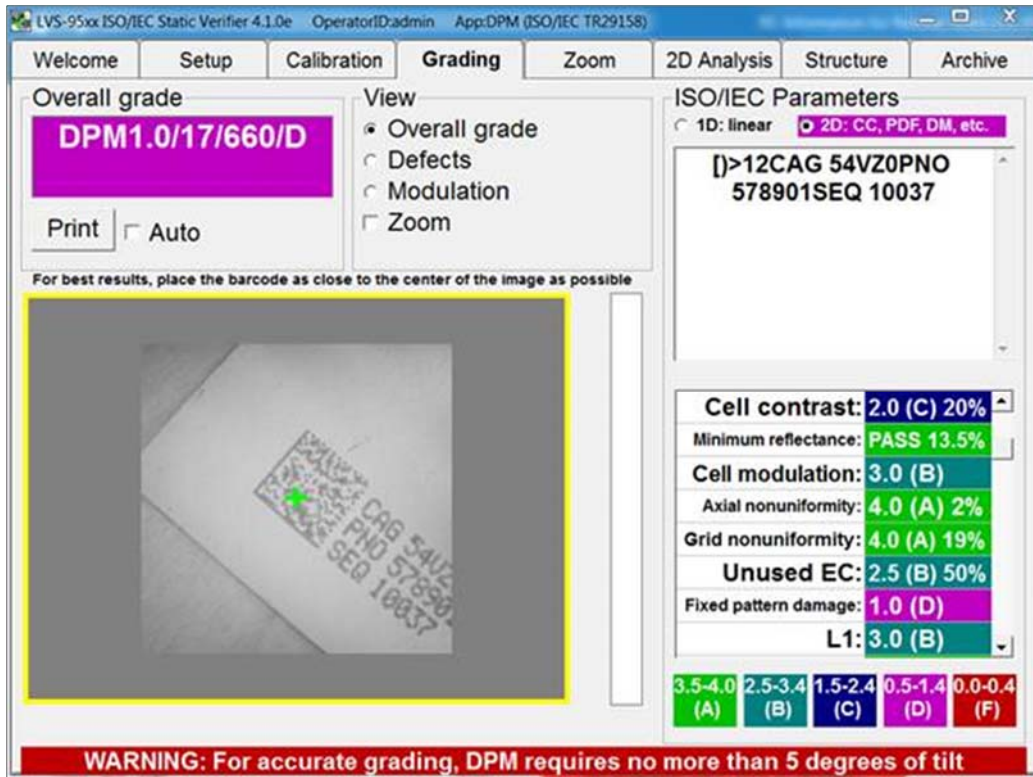
- The software now shows a yellow border around the field of view while the trigger is held down.



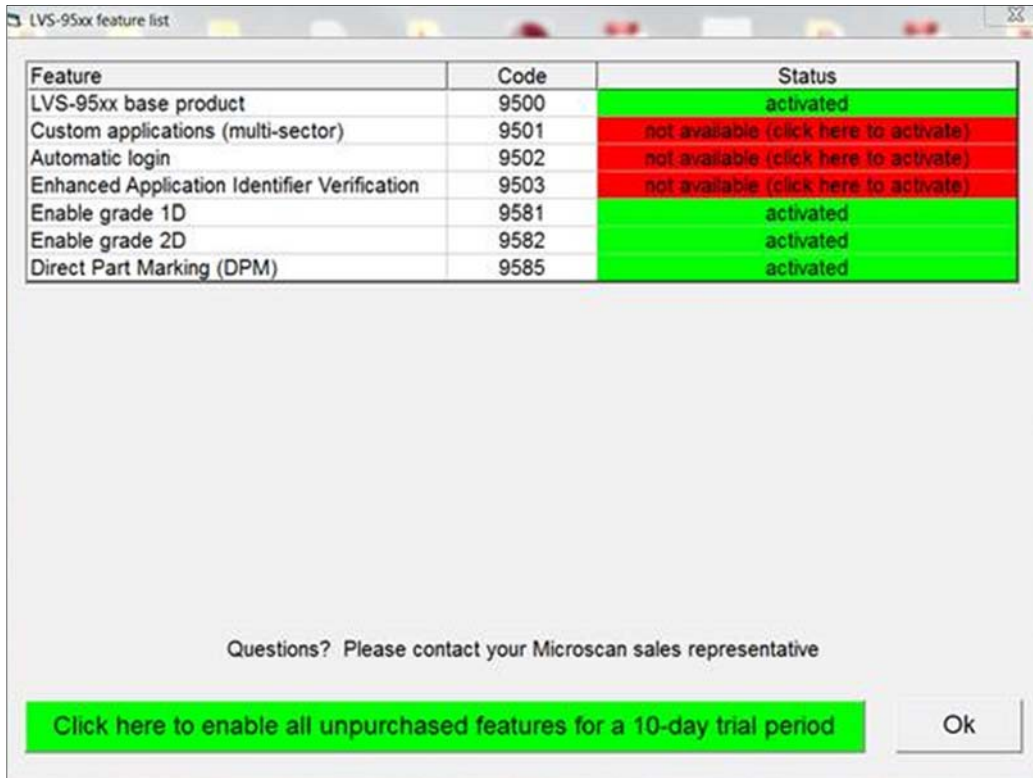
- The software now shows green crosshairs in the LVS-9580's field of view while moving.



- Tilted DPMs are graded, but a warning is issued when applicable.



- Now showing LVS-9585 as a choice in optional features.



- Non-integral exposure has been implemented.
- Structure information is recorded in database so it can be recalled and reprinted.

Updates and Improvements

- Fixed issue with calibration not being reloaded when shortcut key is used to change application standard.
- Updated 0410 Italian translation.
- Fixed calibration issue in Manual Grading Mode.
- No longer accepting Defects symbol in calibration mode.
- Now plotting Micro QR Code format cells properly.
- Error no longer shown when reviewing a report earlier than the latest report.
- Now showing LVS-9585 as a choice in optional features.
- Fixed comma vs. period error for GS1 Specification Tables.
- Now tries to read QR Code when set for DPM.
- Fixed Micro PDF vs. ITF misread issue.
- Fixed stitching issue with the LVS-9510, LVS-9580, and LVS-9585.
- No longer allowing Data Matrix when set for MIL-STD-130N Linear (1D).
- No longer reporting 'D' for dome lighting on non-9580 systems.
- Fixed database migration issue when updating to MySQL.
- Fixed problem accessing reference reports when using a Microsoft SQL Database.

LVS-95XX Software Version History

Version	Release Date	Comment
4.1.0f	14-Nov-2016	Fixed issue with calibration not being reloaded when shortcut key is used to change application standard.
4.1.0f	14-Nov-2016	Updated 0410 Italian translation.
4.1.0e	7-Nov-2016	Fixed calibration issue in Manual Grading Mode.
4.1.0e	7-Nov-2016	No longer accepting Defects symbol in calibration mode.
4.1.0e	7-Nov-2016	Now plotting Micro QR Code format cells properly.
4.1.0e	7-Nov-2016	Error no longer shown when reviewing a report earlier than the latest report.
4.1.0e	7-Nov-2016	Now showing LVS-9585 as a choice in optional features.
4.1.0e	7-Nov-2016	Fixed comma vs. period error for GS1 Specification Tables.
4.1.0e	7-Nov-2016	Now tries to read QR Code when set for DPM.
4.1.0e	7-Nov-2016	Fixed Micro PDF vs. ITF misread issue.
4.1.0e	7-Nov-2016	Fixed stitching issue with the LVS-9510, LVS-9580, and LVS-9585.
4.1.0e	7-Nov-2016	No longer allowing Data Matrix when set for MIL-STD-130N Linear (1D).
4.1.0e	7-Nov-2016	No longer reporting 'D' for dome lighting on non-9580 systems.
4.1.0e	7-Nov-2016	Fixed database migration issue when updating to MySQL.
4.1.0e	7-Nov-2016	Fixed problem accessing reference reports when using a Microsoft SQL Database.
4.0.0j	13-Apr-2016	Added 2D symbologies to GS1 table 4. This is a Gen. Spec. 16 change.
4.0.0j	13-Apr-2016	Added 2D symbologies to GS1 table 7. This is a Gen. Spec. 16 change.
4.0.0j	13-Apr-2016	Added AI (394) Percentage discount of a coupon. This is a Gen. Spec. 16 change.
4.0.0j	13-Apr-2016	Added AI (8012) Software version. This is a Gen. Spec. 16 change.
4.0.0j	13-Apr-2016	Added AI (8111) Loyalty points of a coupon. This is a Gen. Spec. 16 change.
4.0.0j	13-Apr-2016	Changed GS1-128 Table 11 aperture to 5. This is a Gen. Spec. 16 change.
4.0.0j	13-Apr-2016	Cleaned up and sort translation files. Removed duplicate entries and alphabetize.
4.0.0j	13-Apr-2016	Fixed misidentification of older 9580 units. Correct issue where LVS calibration not possible for production.
4.0.0j	13-Apr-2016	Fixed missing leader bars in Data Matrix codes error. Bug fix.
4.0.0j	13-Apr-2016	Fixed missing AI (30) in AI report. Bug fix.
4.0.0j	13-Apr-2016	Removed obsolete manuals.
4.0.0j	13-Apr-2016	Used more aggressive algorithm on UPC/EAN with incorrect check digit and to read F-grade UPC/EAN.
4.0.0j	13-Apr-2016	Used data identifiers for MIL-STD-130N. Add DI syntax for MIL-STD-130.
4.0.0g	10-Mar-2016	Fixed ConfirmEngineType to catch Microsoft SQL 2014.
4.0.0g	10-Mar-2016	Fixed MySQL error. MaxValue is reserved keyword. Add delimiters when engine type is MySQL.
4.0.0g	10-Mar-2016	Fixed SQL Statement error in ActiveDirectoryIntegration. Use UPPER function for MySQL and MSSQL.
4.0.0g	10-Mar-2016	Fixed error in ExportReferenceCommand with using an MSSQL Database.
4.0.0g	10-Mar-2016	Improved Microscan logo.
4.0.0g	10-Mar-2016	Included rebranded manuals.
4.0.0g	10-Mar-2016	Restored internal designations of Atmel-based LVS-9570 units.
4.0.0g	10-Mar-2016	Reverted translation files pending redesign.
4.0.0f	04-Feb-2016	Bumped revision letter.
4.0.0e	02-Feb-2016	Included proper AIs in report for composite symbols.
4.0.0e	02-Feb-2016	Included separate structure reports for 1D and 2D if applicable.
4.0.0e	02-Feb-2016	Preserved ActiveDirectory settings when copying database.
4.0.0d	27-Jan-2016	Changed default exposure for LVS-9580 from 40 ms to 70 ms.
4.0.0d	27-Jan-2016	Added support for new red/white light for LVS-9580 camera.
4.0.0c	24-Jan-2016	Added ActiveDirectory Log file and form setting to enable.
4.0.0c	24-Jan-2016	Added Progress bar when creating operators from Active Directory.
4.0.0c	24-Jan-2016	Corrected bug in Active Directory CreateUsersFromAD.
4.0.0c	24-Jan-2016	Fixed HTML characters in Manufactured By field.
4.0.0c	24-Jan-2016	Fixed unwritable UniCombo controls.
4.0.0c	24-Jan-2016	Renamed old registry values.
4.0.0b	18-Jan-2016	Added ActiveDirectory Log file and form setting to enable.
4.0.0b	18-Jan-2016	Added Progress bar with creating operators from Active Directory.
4.0.0b	18-Jan-2016	Corrected bug in Active Directory CreateUsersFromAD.
4.0.0b	18-Jan-2016	Corrected bug in new Data Matrix locator algorithm.
4.0.0a	13-Jan-2016	Improved Data Matrix locator algorithm.
4.0.0	06-Jan-2016	Rebranded software as Microscan.
4.0.0	06-Jan-2016	Set modulation to 0 for scan lines which fail edge determination.
3.0.9vv	30-Dec-2015	Don't apply 2-character ANSI rules when GS1 in use.
3.0.9vv	30-Dec-2015	Don't undo overrides during calibration.
3.0.9vv	30-Dec-2015	Fixed ambiguity issues when both green and black hardware keys detected.
3.0.9vv	30-Dec-2015	Fixed implied 01 logic to ignore DataBar Expanded.
3.0.9vv	30-Dec-2015	Fixed lockup when Japanese selected.
3.0.9vv	30-Dec-2015	Fixed missing implied (01) for DataBar Omnidirectional.
3.0.9vv	30-Dec-2015	Fixed occasional QR Code not being read.
3.0.9vv	30-Dec-2015	Fixed typo in 0407.dat which prevented it from working.
3.0.9vv	30-Dec-2015	Solved sluggish response on LVS-9510 and LVS-9580 cameras.
3.0.9uu	24-Nov-2015	ActiveDirectory now allows subGroups in LVS AllUsers Group.
3.0.9uu	24-Nov-2015	ActiveDirectory now allows subGroups in LVS Permission Groups.
3.0.9uu	24-Nov-2015	ActiveDirectory changed format for entry of LVS AllUsers Group.
3.0.9uu	24-Nov-2015	ActiveDirectory changed format for entry of LVS Org Unit.
3.0.9uu	24-Nov-2015	Avoided divide by zero error on certain QR Codes.
3.0.9uu	24-Nov-2015	Don't use Base64 encoding during calibration.
3.0.9uu	24-Nov-2015	Embedded HTML images using Base64 encoding to avoid stale image in report.
3.0.9uu	24-Nov-2015	Fixed encoder direction problem when reopening LVS-9570.
3.0.9uu	24-Nov-2015	Fixed importing 24-bit color images.
3.0.9uu	24-Nov-2015	Fixed Logins with user IDs created with ActiveDirectory, when AD is disabled.

3.0.9uu	24-Nov-2015	Fixed missing leading zeroes on Maxicode zip code.
3.0.9uu	24-Nov-2015	Fixed translation duplication issue when phrase ends with numbers.
3.0.9uu	24-Nov-2015	Fixed login failures when using ActiveDirectory.
3.0.9uu	24-Nov-2015	Improved format pattern detection in QR Code.
3.0.9uu	24-Nov-2015	Updated translation files.
3.0.9tt	13-Oct-2015	Added AllowedUserChanges table.
3.0.9tt	13-Oct-2015	Fixed bugs that prevented large QR Codes from reading.
3.0.9tt	13-Oct-2015	Logged browsing database.
3.0.9tt	13-Oct-2015	Redid multiple security device logic.
3.0.9tt	13-Oct-2015	Added support for new LVS-9580 handle hardware.
3.0.9ss	10-Sep-2015	Reloaded recovery databases that predate current serial number design.
3.0.9ss	10-Sep-2015	Removed unreliable message about unprintable characters.
3.0.9ss	10-Sep-2015	Restored display of UPC/EAN percentage.
3.0.9rr	02-Sep-2015	Fixed subtle bug with linkage flag and HIBC.