



CYAN

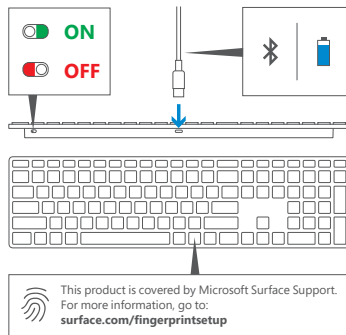
MAGENTA

YELLOW

BLACK

## Pair your keyboard

1. Connect your USB charging cable to your Surface or Windows 10 device.
2. Follow on-screen instructions for *Bluetooth* pairing.





CYAN

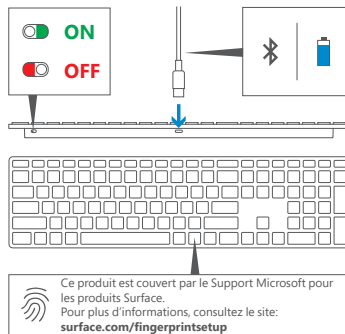
MAGENTA

YELLOW

BLACK

## Jumeler votre clavier

1. Connectez votre câble de chargement USB à votre Surface ou votre appareil fonctionnant sous Windows 10.
2. Suivez les instructions à l'écran pour l'appariement *Bluetooth*.





CYAN

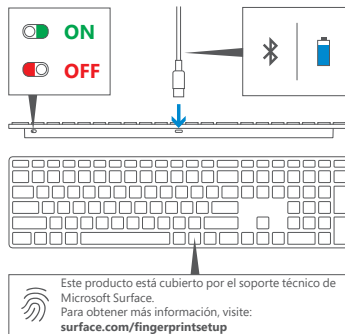
MAGENTA

YELLOW

BLACK

## Sincroniza el teclado

1. Conecta el cable de carga USB a tu dispositivo Surface o Windows 10.
2. Siga las instrucciones en pantalla para el emparejamiento *Bluetooth*.



[support.microsoft.com](https://support.microsoft.com)

© 2016 Microsoft.



X21-02438-02

