

Nokia Bluetooth Headset BH-110 User Guide

Introduction

About your headset

With the Nokia Bluetooth BH-110 headset, you can handle calls hands-free, even when you are using two phones at the same time.

The surface of this product is nickel-free.

Warning:

This product may contain small parts. Keep them out of the reach of small children.

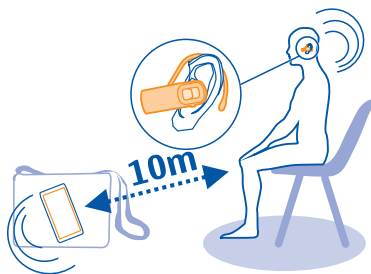
Parts of the product are magnetic. Metallic materials may be attracted to the product. Do not place credit cards or other magnetic storage media near the product, because information stored on them may be erased.

Read this user guide carefully before using the product. Also, read the user guide for the device that you connect to the product.

About Bluetooth connectivity

You can use Bluetooth to make a wireless connection to other compatible devices, such as mobile phones.

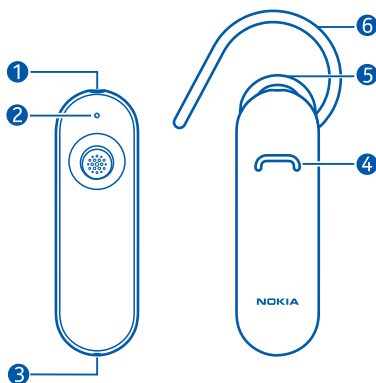
Devices do not need to be in direct line-of-sight, but they must be within 10 metres (33 feet) of each other. The connection may be affected by obstructions such as walls or other electronic devices.



This device is compliant with Bluetooth Specification 2.1 +EDR supporting the following profiles: Headset Profile (HSP) 1.1, Handsfree Profile (HFP) 1.5. Check with the manufacturers of other devices to determine their compatibility with this device.

Get started

Keys and parts



- 1 Charger connector
- 2 Indicator light
- 3 Microphone
- 4 Multifunction key
- 5 Earpiece
- 6 Earloop

Charge the battery

Before using the headset, you must charge the battery.

Warning:

Use only chargers approved by Nokia for use with this particular model. The use of any other types may invalidate any approval or warranty, and may be dangerous. Use of unapproved chargers may present a risk of fire, explosion, or other hazard.

- 1 Connect the charger to a wall outlet.
- 2 Connect the charger cable to the charger connector on the headset. The red indicator light turns green when the battery is fully charged.
- 3 Disconnect the charger from the headset, then from the wall outlet.

When you unplug a charger, hold and pull the plug, not the cord.

The fully charged battery has power for up to 6 hours of talk time or up to 120 hours of standby time.

When the battery charge is low, the headset beeps every 5 minutes, and the red indicator light flashes. When the battery is charging, the red indicator light is on.

Check the battery charge

Make sure the headset is switched on, and press \curvearrowright . A green light indicates a sufficient charge level. If the light is yellow, you may need to recharge the battery soon. If the light is red, recharge the battery.

Switch the headset on or off

Switch on

Press and hold \curvearrowright for 2 seconds. The headset beeps, and a green indicator light flashes once.

The headset connects to the last connected device. If you have never paired the headset with a device, or you have cleared the pairings, pairing mode is activated.

Switch off

Press and hold \curvearrowright for 5 seconds. The headset beeps, and a red indicator light flashes once. All active calls are ended.

If not connected to a device within 30 minutes, the headset switches off.

Pair and connect the headset to your phone

Before using the headset, you must pair and connect it to a compatible phone.

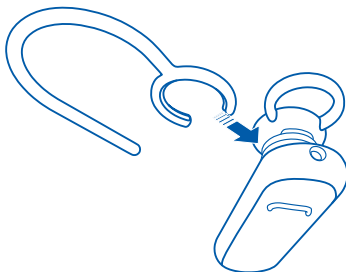
- 1 To switch the headset off, press and hold \curvearrowright for 5 seconds.
- 2 Switch on the phone to pair with.
- 3 If you have never paired the headset with a device, or you have cleared the pairings, switch the headset on.
If you have previously paired your headset with a device, press and hold \curvearrowright for 5 seconds.
Pairing mode is activated, and a green indicator light starts to flash quickly.
- 4 Within 3 minutes, activate Bluetooth on the phone, and set it to search for Bluetooth devices. For details, see the user guide of the phone.
- 5 Select the headset from the list of found devices.
- 6 If required, enter the passcode **0000**.

You can pair your headset with 8 compatible phones, but you can only connect it to a maximum of 2 phones at the same time.

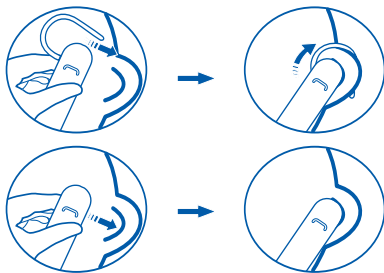
With some phones, you may need to make the connection separately after pairing.

Wear the headset

If you want to use the headset with the earloop, attach the earloop to the headset. To detach the earloop, gently pull it from the headset.



Slide the earloop behind your ear, and gently push the earpiece against your ear. Carefully bend the earloop around your ear for the best fit. Point the headset towards your mouth.



Make calls

Make and receive calls

To make and receive calls using your headset, you need to connect it to your phone.

Make a call

Make a call in the normal way.

Answer a call

Press .

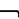
End a call

Press .

Reject a call

Press  twice.

Switch a call between your headset and phone

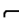
Press and hold  for 2 seconds.

You can redial the last called number or use voice dialling, if your phone supports these features with the headset.

Redial the last called number

When no call is in progress, press  twice.

Use voice dialling



When no call is in progress, press and hold  for 2 seconds, and follow the instructions in the user guide of your phone.

Change the volume

Set the desired volume level on your connected phone. The selected volume level is saved as the minimum volume level for the phone that is currently connected to the headset.

Pair and connect the headset to two phones

When you use the headset for the first time, it automatically connects to your phone. You can also connect your headset to another phone, and manage calls from, for example, both your personal and your work phone at the same time.

- 1 To switch the headset off, press and hold  for 5 seconds.
- 2 To activate pairing mode, press and hold  for 5 seconds, and pair the headset with the second phone.
- 3 Make sure Bluetooth is activated on both phones, and switch the headset off and back on. The headset connects to both phones.

Handle calls from two phones

If your headset is connected to two phones, you can handle calls from both at the same time.

End an ongoing call, and answer a call on another phone

Press .

Put an ongoing call on hold, and answer a call on another phone

Press and hold  for 2 seconds.

Switch between active and held calls

Press and hold  for 2 seconds.

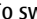

End an ongoing call, and activate a held call

Press .

If you redial or use voice dialling, the call is made on the phone you last had an active call on with the headset.

Settings

Clear device pairings

- 1 To switch the headset off, press and hold  for 5 seconds.
- 2 Press and hold  for 9 seconds. The headset beeps twice, and the red and green indicator lights alternate.

After the pairings are cleared, the headset enters pairing mode.

Product and safety information

Battery and charger information

This device has an internal, nonremovable, rechargeable battery. Do not attempt to remove the battery from the device as you may damage the device.

This device is intended for use when supplied with power from the following chargers: AC-11. The exact charger model number may vary depending on the type of plug. The plug variant is identified by one of the following: E, X, AR, U, A, C, K, or B.

The battery can be charged and discharged hundreds of times, but it will eventually wear out.

Talk and standby times are estimates only. Actual times are affected by, for example, device settings, features being used, battery condition, and temperature.

If the battery has not been used for a long time, to begin charging, you may need to connect the charger, then disconnect and reconnect it.

If the battery is completely discharged, it may take several minutes before the charging indicator is displayed.

When your charger is not in use, unplug it from the electrical plug and the device. Do not leave a fully charged battery connected to a charger, as overcharging may shorten the battery's lifetime. If left unused, a fully charged battery will lose its charge over time.

Always keep the battery between 15°C and 25°C (59°F and 77°F). Extreme temperatures reduce the capacity and lifetime of the battery. A device with a hot or cold battery may not work temporarily.

Do not dispose of batteries in a fire as they may explode. Dispose of batteries according to local regulations. Recycle when possible. Do not dispose as household waste.

Use the charger for its intended purpose only. Improper use or use of unapproved chargers may present a risk of fire, explosion, or other hazard, and may invalidate any approval or warranty. If you believe the charger is damaged, take it to a service centre for inspection before continuing to use it. Never use a damaged charger. Only use the charger indoors.

Take care of your device

Handle your device, charger and accessories with care. The following suggestions help you protect your warranty coverage.

- Keep the device dry. Precipitation, humidity, and all types of liquids or moisture can contain minerals that corrode electronic circuits. If your device gets wet, allow the device to dry.
- Do not use or store the device in dusty or dirty areas. Moving parts and electronic components can be damaged.
- Do not store the device in high temperatures. High temperatures can shorten the life of the device, damage the battery, and warp or melt plastics.
- Do not store the device in cold temperatures. When the device warms to its normal temperature, moisture can form inside the device and damage electronic circuits.
- Do not attempt to open the device.
- Unauthorised modifications may damage the device and violate regulations governing radio devices.
- Do not drop, knock, or shake the device. Rough handling can break internal circuit boards and mechanics.
- Only use a soft, clean, dry cloth to clean the surface of the device.
- Do not paint the device. Paint can clog moving parts and prevent proper operation.

Recycle

Always return your used electronic products, batteries, and packaging materials to dedicated collection points. This way you help prevent uncontrolled waste disposal and promote the recycling of materials. .

Copyright and other notices

DECLARATION OF CONFORMITY

Hereby, NOKIA CORPORATION declares that this BH-110 product is in compliance with the essential requirements and other relevant provisions of Directive 1999/5/EC. A copy of the Declaration of Conformity can be found at http://www.nokia.com/phones/declaration_of_conformity/.

CE 0979

© 2011 Nokia. All rights reserved.

Nokia, Nokia Connecting People, and the Nokia Original Accessories logo are trademarks or registered trademarks of Nokia Corporation.

The Bluetooth word mark and logos are owned by the Bluetooth SIG, Inc. and any use of such marks by Nokia is under license. The availability of products may vary by region. For more information, contact your Nokia dealer. This device may contain commodities, technology or software subject to export laws and regulations from the US and other countries. Diversion contrary to law is prohibited.

FCC/INDUSTRY CANADA NOTICE

This device complies with Part 15 of the FCC Rules and Industry Canada licence-exempt RSS standard(s). Operation is subject to the following two conditions: 1. This device may not cause harmful interference; and 2. This device must accept any interference received, including interference that may cause undesired operation. This equipment has been tested and found to comply with the limits for a Class B digital device, pursuant to Part 15 of the FCC Rules. These limits are designed to provide reasonable protection against harmful interference in a residential installation. This equipment generates, uses and can radiate radio frequency energy and, if not installed and used in accordance with the instructions, may cause harmful interference to radio communications. However, there is no guarantee that interference will not occur in a particular installation. If this equipment does cause harmful interference to radio or television reception, which can be determined by turning the equipment off and on, the user is encouraged to try to correct the interference by one or more of the following measures: Reorient or relocate the receiving antenna. Increase the separation between the equipment and receiver. Connect the equipment into an outlet on a circuit different from that to which the receiver is connected. Consult the dealer or an experienced radio/TV technician for help.

NOTE: FCC Radiation Exposure Statement: This equipment complies with FCC radiation exposure limits set forth for an uncontrolled environment. This transmitter must not be co-located or operating in conjunction with any other antenna or transmitter. NOTE: Changes or modifications not expressly approved by Nokia could void the user's authority to operate the equipment.

