
User Guide

Nokia Bluetooth Stereo Headset BH-121

NOKIA

User Guide

Nokia Bluetooth Stereo Headset BH-121

Contents

About your headset	3
Keys and parts	4
Charge your headset	5
Switch on your headset	6
Pair and connect your headset using NFC	7
About Bluetooth connectivity	8
Pair and connect your headset using Bluetooth	9
Make and receive calls	10
Handle calls from 2 phones	11
Change the volume	12
Listen to music	13
Reset your headset	14
Restore factory settings	15
Troubleshooting and support	16
Product and safety information	17
Copyrights and other notices	18

About your headset

With the Nokia Bluetooth Stereo Headset BH-121, you can turn any pair of headphones into a wireless headset. Just pair up the devices, plug in your headphones, and you're ready to go.

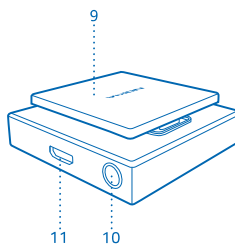
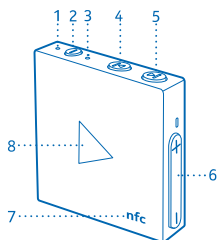
If you have 2 phones, you can connect them both to the headset simultaneously. The noise-blocking in-ear headphones give you a clear and powerful sound, and 3 different sizes of earbuds help you find the perfect fit.

Keys and parts

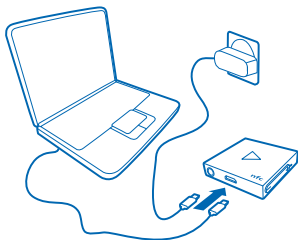
Get to know your headset.

- 1 Battery indicator light
- 2 Power key
- 3 Bluetooth indicator light
- 4 Rewind key ◀◀
- 5 Fast forward key ▶▶
- 6 Volume keys
- 7 NFC area
- 8 Multifunction key ▶
- 9 Carrying clip
- 10 Audio connector (3.5 mm)
- 11 Charger connector

The surface of this product is nickel-free.



Charge your headset



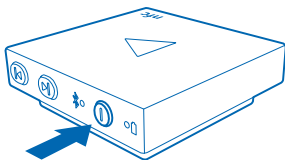
Before using the headset, you must charge the battery.

1. Plug a compatible charger into a wall outlet, or connect your headset to a compatible computer with a USB cable.
2. Connect the micro-USB end of the cable to the charger connector on your headset. When the battery is fully charged, the red battery indicator light turns green.
3. Disconnect the charger from the headset, then from the wall outlet.

When you unplug a charger, hold and pull the plug, not the cord.

Switch on your headset

Switch on your headset to check the battery.



Press and hold the power key for 2 seconds. If the battery is full, the battery indicator light flashes green once. If the indicator light flashes red fast, charge the battery.

The headset automatically connects to the last connected device. If you have never paired your headset with a device, or you have cleared the pairings, pairing mode is activated.

If the headset is not connected within 30 minutes, it switches off.

Switch the headset off

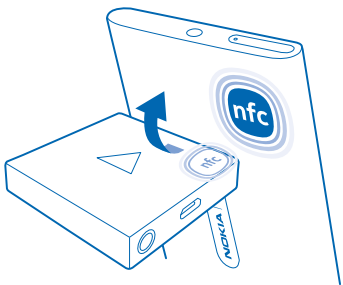
Press and hold the power key for 2 seconds. The headset closes all connections and switches off.

Pair and connect your headset using NFC

If your phone supports Near Field Communication (NFC), it's easy to pair your headset.

You can pair your headset with up to 8 devices.

Tap the NFC area of the phone and the headset together. If the headset is switched off, it switches on before pairing.



To reconnect to a previously paired device, tap the NFC areas together. You can connect to up to 2 devices at the same time.

About Bluetooth connectivity

You can use Bluetooth to make a wireless connection to other compatible devices, such as mobile phones.

The devices don't have to be in direct line-of-sight, but they must be within 10 metres (33 feet) of each other. The connection may be affected by obstructions such as walls or other electronic devices.

This device is compliant with Bluetooth Specification 3.0 supporting the following profiles: hands-free (1.6), headset (1.2), advanced audio distribution (1.2), and audio/video remote control (1.4). Check with the manufacturers of other devices to determine their compatibility with this device.

Pair and connect your headset using Bluetooth

Before using the headset, you must pair and connect it with a compatible device. You can pair the headset with 8 devices.

Make sure your headset is switched on.

1. To enter pairing mode, press and hold the power key for 2 seconds. The Bluetooth indicator light flashes quickly.
2. Switch on Bluetooth on your phone, and search for Bluetooth devices.
3. Select the headset from the list to pair your phone with it.
4. If necessary, type in the passcode **0000**.

When the headset is connected, the Bluetooth indicator light flashes slowly.

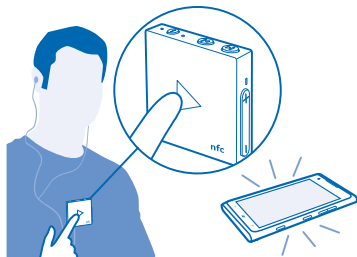
The next time you switch on the headset, it automatically connects to the last connected device.

If the connection is lost, the Bluetooth indicator light flashes twice repeatedly.

- ★ **Tip:** When your headset is connected to a device, you may want to pair it with other devices. To go back to pairing mode, press and hold the power key for 5 seconds.

Make and receive calls

You can use your headset in various ways for handling calls.



Make sure your headset is on.

1. To make a call, use the phone.
2. To answer or end a call, press ►.

★ **Tip:** If your headset is switched off and there's an incoming call on the phone you last connected the headset to, just switch on the headset to answer the call.

3. To reject an incoming call, press ► twice.
4. To make a call using voice dialling, press ► for 2 seconds.

Voice dialling is only available when not in call. Not all phones support this features with a headset.

Handle calls from 2 phones

Make sure both phones are connected to your headset. Both phones must support Bluetooth hands-free profile.

To switch on the multipoint feature, press ► and the volume up key for 2 seconds. To switch off the multipoint, press ► and the volume down key for 2 seconds.

1. To answer a waiting call and end the active call, press ► .
2. To answer or switch to a waiting call and put the active call on hold, press and hold ► for 2 seconds.
3. To end the active call and make the call on hold active, press ► .
4. To reject a waiting call, press ► twice.

★ **Tip:** If call waiting is available on your phone, you can handle 2 calls from one phone in the same way. Call waiting is a network service.

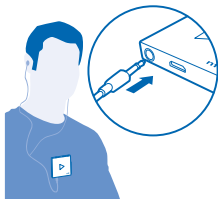
Change the volume

When you need to, adjust the volume to your liking.

Press the volume keys up or down during a call or when listening to music.

Listen to music

Like to move around while listening to music? With your headset, you can listen to music from your phone or computer.



Pair and connect your headset to a compatible device that has a music player.

1. Select the song in the music player, and press ►.
2. To play the next song, press ►►.
3. To play the previous song, press ◀◀ twice.
4. To scroll through the song quickly, press and hold ►► or ◀◀.
5. To pause playback, press ►.

Reset your headset

If you encounter problems, resetting your headset may help.

Press and hold ► while connecting the headset to a charger.

Resetting your headset preserves your pairings and other settings.

Restore factory settings

If you want to clear all the pairings and settings, restore your headset to the factory settings.

1. Make sure the headset is not connected to any devices.
2. Press and hold ► and the power key for 2 seconds.

You hear a voice prompt, and the battery indicator light flashes green and red.

Troubleshooting and support

When you want to learn more about your device, or if you're unsure how your device should work, there are several support channels for you to check.



To help you get the most out of your device, you can explore www.nokia.com/support.

There you can find:

- Troubleshooting info
- Discussions
- News on apps and downloads
- Further details about features and technologies, and the compatibility of devices and accessories

Troubleshooting and discussions may not be available in all languages.

Product and safety information

Take care of your device

Handle your device, battery, charger and accessories with care. The following suggestions help you keep your device operational.

- Keep the device dry. Precipitation, humidity, and all types of liquids or moisture can contain minerals that corrode electronic circuits. If your device gets wet, let the device dry.
- Do not use or store the device in dusty or dirty areas.
- Do not store the device in high temperatures. High temperatures may damage the device or battery.
- Do not store the device in cold temperatures. When the device warms to its normal temperature, moisture can form inside the device and damage it.
- Do not open the device.
- Unauthorised modifications may damage the device and violate regulations governing radio devices.
- Do not drop, knock, or shake the device. Rough handling can break it.
- Only use a soft, clean, dry cloth to clean the surface of the device.

Recycle



Always return your used electronic products, batteries, and packaging materials to dedicated collection points. This way you help prevent uncontrolled waste disposal and promote the recycling of materials. All materials of the device can be recovered as materials and energy. Check how to recycle your Nokia products at www.nokia.com/recycle.

Crossed-out wheeled-bin symbol



The crossed-out wheeled-bin symbol on your product, battery, literature, or packaging reminds you that all electrical and electronic products and batteries must be taken to separate collection at the end of their working life. Do not dispose of these products as unsorted municipal waste: take them for recycling. For info on your nearest recycling point, check with your local waste authority, or go to www.nokia.com/support. For more info on the environmental attributes of your device, see www.nokia.com/ecoprofile.

Battery and charger info

Your device has an internal, non-removable, rechargeable battery. Do not attempt to remove the battery, as you may damage the device.

Charge your device with any micro-USB compatible charger. Charger plug type may vary.

Nokia may make additional battery or charger models available for this device.

- ! **Important:** Operating times are estimates only. Actual times are affected by, for example, network conditions, device settings, features being used, battery condition, and temperature.

Battery and charger safety

To unplug a charger or an accessory, hold and pull the plug, not the cord.

When your charger is not in use, unplug it. If left unused, a fully charged battery will lose its charge over time.

Always keep the battery between 15°C and 25°C (59°F and 77°F) for optimal performance. Extreme temperatures reduce the capacity and lifetime of the battery. A device with a hot or cold battery may not work temporarily.

Do not dispose of batteries in a fire as they may explode. Obey local regulations. Recycle when possible. Do not dispose as household waste.

Do not dismantle, cut, crush, bend, puncture, or otherwise damage the battery in any way. If a battery leaks, do not let liquid touch skin or eyes. If this happens, immediately flush the affected areas with water, or seek medical help. Do not modify, attempt to insert foreign objects into the battery, or immerse or expose it to water or other liquids. Batteries may explode if damaged.

Use the battery and charger for their intended purposes only. Improper use, or use of unapproved or incompatible batteries or chargers may present a risk of fire, explosion, or other hazard, and may invalidate any approval or warranty. If you believe the battery or charger is damaged, take it to a service centre before continuing to use it. Never use a damaged battery or charger. Only use the charger indoors.

Copyrights and other notices

DECLARATION OF CONFORMITY

CE 0560

Hereby, NOKIA CORPORATION declares that this BH-121 product is in compliance with the essential requirements and other relevant provisions of Directive 1999/5/EC. A copy of the Declaration of Conformity can be found at www.nokia.com/global/declaration/declaration-of-conformity.

The availability of products may vary by region. For more info, contact your Nokia dealer. This device may contain commodities, technology or software subject to export laws and regulations from the US and other countries. Diversion contrary to law is prohibited.

The contents of this document are provided "as is". Except as required by applicable law, no warranties of any kind, either express or implied, including, but not limited to, the implied warranties of merchantability and fitness for a particular purpose, are made in relation to the accuracy, reliability or contents of this document. Nokia reserves the right to revise this document or withdraw it at any time without prior notice.

To the maximum extent permitted by applicable law, under no circumstances shall Nokia or any of its licensors be responsible for any loss of data or income or any special, incidental, consequential or indirect damages howsoever caused.

Reproduction, transfer or distribution of part or all of the contents in this document in any form without the prior written permission of Nokia is prohibited. Nokia operates a policy of continuous development. Nokia reserves the right to make changes and improvements to any of the products described in this document without prior notice.

Nokia does not provide a warranty for or take any responsibility for the functionality, content, or end-user support of third-party apps provided with your device. By using an app, you acknowledge that the app is provided as is. Nokia does not make any representations, provide a warranty, or take any responsibility for the functionality, content, or end-user support of third-party apps provided with your device.

FCC/INDUSTRY CANADA NOTICE

This device complies with part 15 of the FCC rules and Industry Canada licence-exempt RSS standard(s). Operation is subject to the following two conditions: (1) This device may not cause harmful interference, and (2) this device must accept any interference received, including interference that may cause undesired operation. Any changes or modifications not expressly approved by Nokia could void the user's authority to operate this equipment.

Note: This equipment has been tested and found to comply with the limits for a Class B digital device, pursuant to part 15 of the FCC Rules. These limits are designed to provide reasonable protection against harmful interference in a residential installation. This equipment generates, uses and can radiate radio frequency energy and, if not installed and used in accordance with the instructions, may cause harmful interference to radio communications. However, there is no guarantee that interference will not occur in a particular installation. If this equipment does cause harmful interference to radio or television reception, which can be determined by turning the equipment off and on, the user is encouraged to try to correct the interference by one or more of the following measures:

- Reorient or relocate the receiving antenna.
- Increase the separation between the equipment and receiver.
- Connect the equipment into an outlet on a circuit different from that to which the receiver is connected.
- Consult the dealer or an experienced radio/TV technician for help.

NOTE: FCC Radiation Exposure Statement: This equipment complies with FCC radiation exposure limits set forth for an uncontrolled environment. This transmitter must not be co-located or operating in conjunction with any other antenna or transmitter.

TM & © 2013 Nokia. All rights reserved. Third party products/names may be TMs of their respective owners.

The Bluetooth word mark and logos are owned by the Bluetooth SIG, Inc. and any use of such marks by Nokia is under license.

