

Nokia Wireless Charging Car Holder CR-200 User Guide

Issue 1.0

About your wireless charging car holder

With the Nokia Wireless Charging Car Holder CR-200, you can access and charge your compatible phone easily at all times. Just put your phone in the holder, and the charging starts immediately.

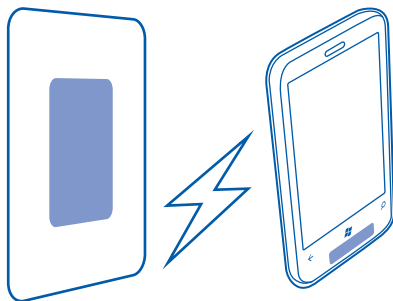
Parts of the product are magnetic. Metallic materials may be attracted to the product. Do not place credit cards or other magnetic storage media near the product, because info stored on them may be erased.

The surface of this product is nickel-free.

Read this user guide carefully before using the product. Also, read the user guide for the device that you connect to the product.

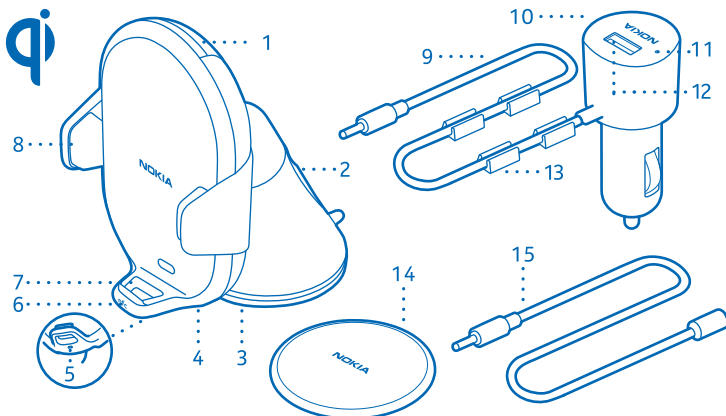
About Qi

Qi is a global standard that makes wireless charging possible for your device. With a Qi-compatible device, you don't need to connect any cables between the device and the charger. You just place your device on the charging surface.



Qi works using magnetic induction, and is currently designed for devices that use 5 watts of power or less, such as mobile phones. Qi chargers and devices use the same frequency. As long as their charging areas are touching, all Qi products are compatible, regardless of manufacturer or brand. For more details, see the user guides of both devices.

Parts



- 1 Clamp release button
- 2 Mount locking lever
- 3 Suction cup
- 4 Connector for power cable
- 5 Charger indicator light
- 6 Near Field Communication (NFC) area
- 7 Cable opening
- 8 Clamps
- 9 Power cable
- 10 Power supply
- 11 Power indicator light
- 12 USB connector
- 13 Cable clip
- 14 Mounting plate (may be available separately)
- 15 Extension cable

Attach the car holder

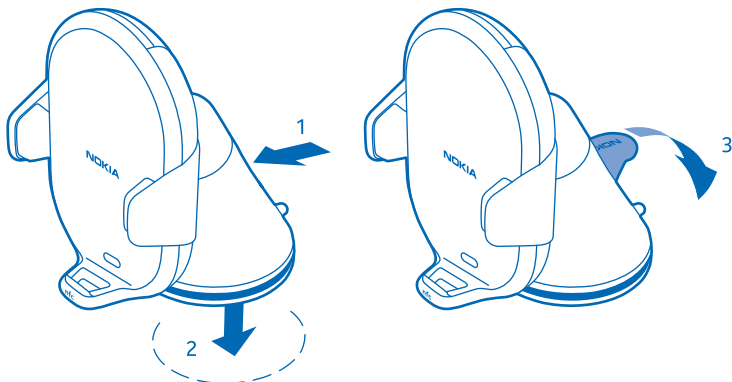
Some treatments on the dashboard or dirt on the suction cup may result in a significantly less effective bond, so before you start, remove such treatments, and make sure that the cup is clean.

- 1 Push the mount locking lever inwards.

4 Attach the car holder

- 2 Remove the protective film on the suction cup, and place the car holder in a good spot on the dashboard.
- 3 Press the car holder down firmly and evenly, and press the mount locking lever closed.

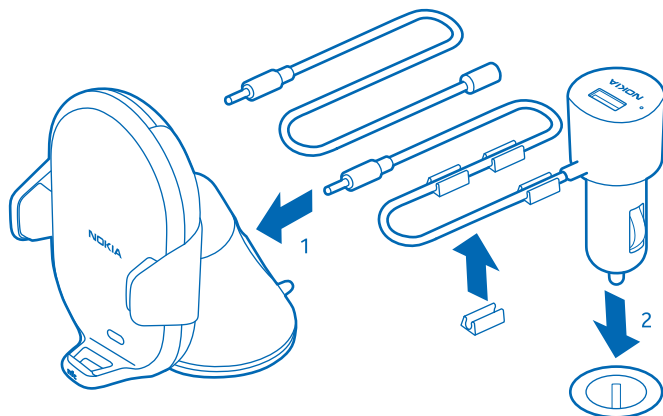
Tip: If you have trouble getting the suction cup to hold, attach a mounting plate on the dashboard first.



Remove the holder from the dashboard

Push the mount locking lever inwards, and lift from the tab on the edge of the suction cup.

Connect the cables



- 1 Connect the power cable to the car holder. If needed, connect the extension cable.
- 2 Plug the power supply into the cigarette lighter socket.

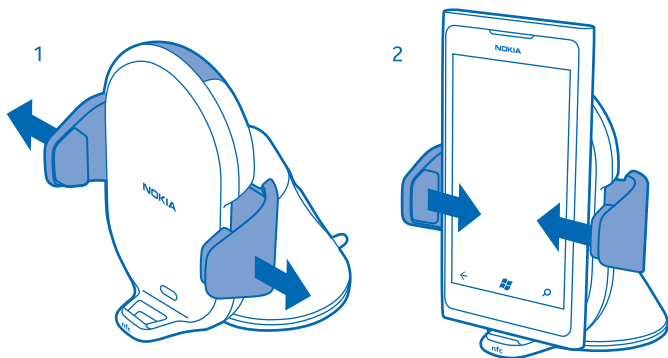
When the device is using power, the power indicator light is switched on.

To keep the dashboard neat, put the cable in the cable clips, and attach the cable clips to the dashboard.

Place your phone in the holder

Make sure the holder is in a vertical position and facing you.

- 1 To widen the clamps, press the clamp release button in.



- 2 Place your phone in the holder, and push the clamps together, until the phone is firmly in place.

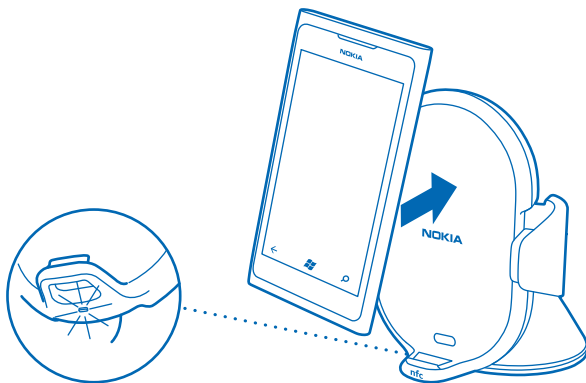
Tip: To use your holder horizontally, place the phone in the holder vertically, and turn the holder into a horizontal position.

Make sure the clamps don't cover any important controls on your phone, such as the power key.

If your phone has no wireless charging, you can still hook it up to the holder. To charge, connect your phone to the USB connector with the USB cable, for example, through the cable opening.

Charge your phone

To start charging, simply place your phone in the holder. A white indicator lights up. When the battery is fully charged, the indicator light goes out.



It's normal for the holder and phone to get warm, and they may get even warmer if you use your phone to, for example, navigate while charging.

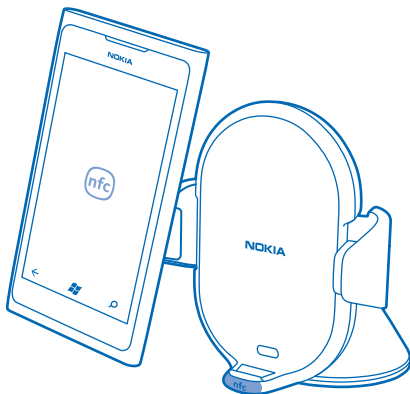
Charging may be less efficient if you use your phone for activities that need a lot of power, such as navigating and making a call at the same time.

Keep the area around the holder free. If there is something besides your phone in the holder, the phone doesn't charge, and the white indicator light blinks quickly.

Set your phone to automatically perform an action

You can set your Nokia Lumia to automatically perform an action, for example, to open HERE Drive+, when you tap the Near Field Communication (NFC) area of the holder with your phone.

Tap the NFC area of the holder with the NFC area of your phone, and follow the instructions on the phone.



You can set different phones to perform a different action with the same holder, and your phone to do different things with different holders.

To start the action, tap the NFC area of the holder with the NFC area of your phone.

For more info on your phone's NFC capabilities, see the user guide.

Indicator lights

Charger indicator lights

One long flash

The battery of your phone is already full

Continuous

Charging

Off

The battery of your phone is fully charged

Flashing quickly

Charging error

Power indicator light

Continuous

Power is on

If there is a problem with charging:

- Check that no other object is in the holder.

- If the holder is too warm, take your phone off the holder, and switch the holder off. The holder may switch off automatically if it is too hot. When the holder has cooled down, try charging again.

Find support

When you want to learn more about how to use your device, or if you're unsure how your device should work, read the user guide thoroughly.

If your issue remains unsolved, contact Nokia for repair options.

General safety instructions

Read these simple guidelines. Not following them may be dangerous or illegal. For further information, read the complete user guide.

Obey all local laws. Always keep your hands free to operate the vehicle while driving. Your first consideration while driving should be road safety. Only operate the mounting device or mobile holder if it is safe to do so under all driving conditions.

When you install the mounting device or mobile holder, make sure that they do not interfere with or hinder the steering or braking systems or other systems used in the operation of the vehicle (for example, airbags) or disturb your field of vision while driving.

Check that the deployment of the airbag is not blocked or impaired in any way. Make sure that the mounting device or mobile holder is not installed where you might come in contact with it in the event of an accident or collision.

Periodically check that the suction cup at the bottom of the mounting device is firmly attached to the windscreen or the dashboard, especially if the ambient temperature changes a lot.

Do not place or remove a mobile phone while driving.

To learn more about how to use your product, or if you are unsure how your product should work, see the support pages at www.nokia.com/support.

Product and safety information

Take care of your device

Handle your device, charger and accessories with care. The following suggestions help you protect your warranty coverage.

- Keep the device dry. Precipitation, humidity, and all types of liquids or moisture can contain minerals that corrode electronic circuits. If your device gets wet, allow the device to dry.
- Use the charger for intended purposes only. Improper use, or use of incompatible chargers may present a risk of fire, explosion, or other hazard. Never use a damaged charger.

10 Copyright and other notices

- Do not attempt to charge a device having a damaged, cracked or open battery case or a device that is not compatible with Qi.
- Do not use or store the device in dusty or dirty areas.
- Do not store the device in high temperatures. High temperatures may damage the device.
- Do not store the device in cold temperatures. When the device warms to its normal temperature, moisture can form inside the device and damage it.
- Do not open the device.
- Unauthorised modifications may damage the device and violate regulations governing radio devices.
- Do not drop, knock, or shake the device. Rough handling can break it.
- Only use a soft, clean, dry cloth to clean the surface of the device.

Recycle



Always return your used electronic products, batteries, and packaging materials to dedicated collection points. This way you help prevent uncontrolled waste disposal and promote the recycling of materials. All materials of the device can be recovered as materials and energy.

Crossed-out wheeled-bin symbol



The crossed-out wheeled-bin symbol on your product, battery, literature, or packaging reminds you that all electrical and electronic products and batteries must be taken to separate collection at the end of their working life. This requirement applies in the European Union and Turkey. Do not dispose of these products as unsorted municipal waste: take them for recycling. For info on your nearest recycling point, check with your local waste authority, or go to www.nokia.com/support. For more info on the environmental attributes of your device, see www.nokia.com/ecoprofile.

Implanted medical devices

To avoid potential interference, manufacturers of implanted medical devices recommend a minimum separation of 15.3 centimetres (6 inches) between a wireless device and the medical device. Persons who have such devices should:

- Always keep the wireless device more than 15.3 centimetres (6 inches) from the medical device.
- Not carry the wireless device in a breast pocket.
- Switch the wireless device off if there is any reason to suspect that interference is taking place.
- Follow the manufacturer directions for the implanted medical device.

If you have any questions about using your wireless device with an implanted medical device, consult your health care provider.

Copyright and other notices

DECLARATION OF CONFORMITY



Hereby, NOKIA CORPORATION declares that this CR-200 product is in compliance with the essential requirements and other relevant provisions of Directive 2004/108/EC. A copy of the Declaration of Conformity can be found at <http://www.nokia.com/global/declaration>.

© 2013 Nokia. All rights reserved.

Nokia, Nokia Connecting People, and the Nokia Original Accessories logo are trademarks or registered trademarks of Nokia Corporation.

Reproduction, transfer, or distribution of part or all of the contents in this document in any form without the prior written permission of Nokia is prohibited. Nokia operates a policy of continuous development. Nokia reserves the right to make changes and improvements to any of the products described in this document without prior notice.

The 'Qi' symbol is a trademark of the Wireless Power Consortium

To the maximum extent permitted by applicable law, under no circumstances shall Nokia or any of its licensors be responsible for any loss of data or income or any special, incidental, consequential or indirect damages howsoever caused.

The contents of this document are provided "as is". Except as required by applicable law, no warranties of any kind, either express or implied, including, but not limited to, the implied warranties of merchantability and fitness for a particular purpose, are made in relation to the accuracy, reliability or contents of this document. Nokia reserves the right to revise this document or withdraw it at any time without prior notice.

The availability of products may vary by region. For more info, contact your Nokia dealer. This device may contain commodities, technology or software subject to export laws and regulations from the US and other countries. Diversion contrary to law is prohibited.

FCC/INDUSTRY CANADA NOTICE

This device complies with part 15 of the FCC rules and Industry Canada licence-exempt RSS standard(s). Operation is subject to the following two conditions: (1) This device may not cause harmful interference, and (2) this device must accept any interference received, including interference that may cause undesired operation. Any changes or modifications not expressly approved by Nokia could void the user's authority to operate this equipment.

Note: This equipment has been tested and found to comply with the limits for a Class B digital device, pursuant to part 15 of the FCC Rules. These limits are designed to provide reasonable protection against harmful interference in a residential installation. This equipment generates, uses and can radiate radio frequency energy and, if not installed and used in accordance with the instructions, may cause harmful interference to radio communications. However, there is no guarantee that interference will not occur in a particular installation. If this equipment does cause harmful interference to radio or television reception, which can be determined by turning the equipment off and on, the user is encouraged to try to correct the interference by one or more of the following measures:

- Reorient or relocate the receiving antenna.
- Increase the separation between the equipment and receiver.
- Connect the equipment into an outlet on a circuit different from that to which the receiver is connected.
- Consult the dealer or an experienced radio/TV technician for help.

/Issue 1.0 EN