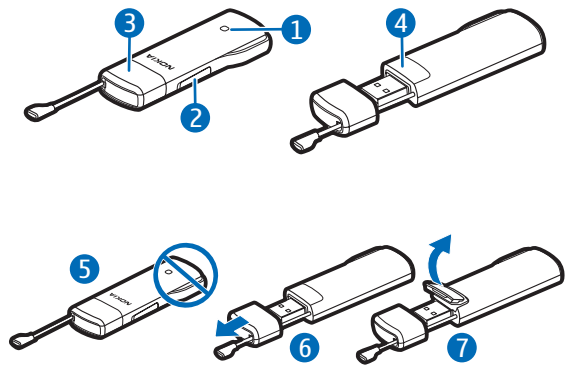
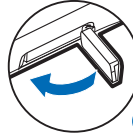
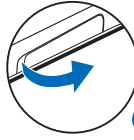
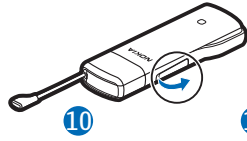
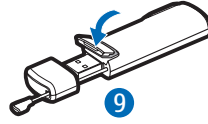
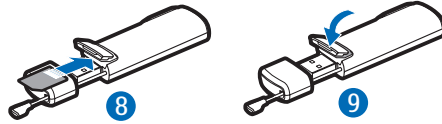


Nokia Internet Stick CS-18



9219983/1



ENGLISH

DECLARATION OF CONFORMITY

Hereby, NOKIA CORPORATION declares that this RD-11 product is in compliance with the essential requirements and other relevant provisions of Directive 1999/5/EC. A copy of the Declaration of Conformity can be found at http://www.nokia.com/phones/declaration_of_conformity/.

CE0700

© 2010 Nokia. All rights reserved.

Nokia, Nokia Connecting People and the Nokia Original Accessories logo are trademarks or registered trademarks of Nokia Corporation. Other product and company names mentioned herein may be trademarks or tradenames of their respective owners.

Reproduction, transfer, distribution, or storage of part or all of the contents in this document in any form without the prior written permission of Nokia is prohibited. Nokia operates a policy of continuous development. Nokia reserves the right to make changes and improvements to any of

the products described in this document without prior notice.

To the maximum extent permitted by applicable law, under no circumstances shall Nokia or any of its licensors be responsible for any loss of data or income or any special, incidental, consequential or indirect damages howsoever caused.

The contents of this document are provided "as is". Except as required by applicable law, no warranties of any kind, either express or implied, including, but not limited to, the implied warranties of merchantability and fitness for a particular purpose, are made in relation to the accuracy, reliability or contents of this document. Nokia reserves the right to revise this document or withdraw it at any time without prior notice. The availability of particular products and applications and services for these products may vary by region. Please check with your Nokia dealer for details, and availability of language options. This device may contain commodities, technology or software subject to export laws and regulations from the US and other countries. Diversion contrary to law is prohibited.

ENGLISH

SAFETY

Read these simple guidelines. Not following them may be dangerous or illegal. Read the complete user guide for further information.



SWITCH ON SAFELY

Do not switch the device on when wireless phone use is prohibited or when it may cause interference or danger.



INTERFERENCE

All wireless devices may be susceptible to interference, which could affect performance.



SWITCH OFF IN RESTRICTED AREAS

Follow any restrictions. Switch the device off in aircraft, near medical equipment, fuel, chemicals, or blasting areas.



QUALIFIED SERVICE

Only qualified personnel may repair this product.



WATER-RESISTANCE

Your device is not water-resistant. Keep it dry.

About your device

The wireless device described in this guide is approved for use on the (E)GSM 850, 900, 1800, and 1900, and UMTS 850/1900/2100 HSPA networks. Contact

your service provider for more information about networks.

During extended operation, such as a high speed data connection, the device may feel warm. In most cases, this

ENGLISH

condition is normal. If you suspect the device is not working properly, take it to the nearest authorized service facility.

When connecting to any other device, read its user guide for detailed safety instructions. Do not connect incompatible products.

■ Network services

To use the device you must have service from a wireless service provider. Some features are not available on all networks; other features may require that you make specific arrangements with your service provider to use them. Network services involve transmission of data. Check with your service provider for

details about fees in your home network and when roaming in other networks. Your service provider can explain what charges will apply. Some networks may have limitations that affect how you can use some features of this device requiring network support.

Introduction

The Nokia Internet Stick CS-18 is a wireless modem that lets you transfer data in cellular networks.

To use the device with your computer, you need the Nokia Internet Modem application that is automatically

installed when you connect the device to the computer for the first time.

Read this guide carefully before using the device. Also read the user guides for the Nokia Internet Modem application, your computer, operating

ENGLISH

system, and any software that you use with the internet connection set up through the device.

For additional information, go to www.nokia.com/support.

The operating temperature of this device is -15°C to 35°C (5°F to 95°F), and the storage temperature is -40°C to 85°C (-40°F to 185°F).



Warning: The plug of this device may contain a small amount of nickel. Persons who are sensitized to nickel may have symptoms from prolonged skin contact with the plug.

Read the user guide for Nokia Internet Modem

To read the user guide for the Nokia Internet Modem application, you must have a PDF reader application installed on your computer. You can

download the PDF reader, for example, from the Adobe website.

To access the user guide, select the question mark (*Help*) in the main view of the Nokia Internet Modem application. The user guide is displayed in the language that you selected during the installation of the application.

Supported hardware and software

The USB plug on the device supports the data transfer rates defined in the USB specification version 2.0.

To use the device for data transfer with your computer, the computer must have a 500 MHz 32-bit (x86) or 64-bit (x64) processor or faster, a compatible USB port, and 350 megabytes of available space on the hard disk. You also need one of the following operating systems:
Microsoft Windows XP (Service Pack 2

ENGLISH

with Hotfix KB943198, or Service Pack 3 or newer), Microsoft Windows Vista, Windows 7, Linux Ubuntu 9.04, or Apple Mac OS 10.4, 10.5, or 10.6. Microsoft Windows XP 64-bit Edition is not supported.

Get started

The device contains the following parts shown on the title page: indicator light (1), cover of the memory card slot (2), USB plug covered with a protection cap (3), and cover of the SIM card slot (4).

Antenna locations

Your device has internal antennas. Avoid touching the antenna area (5) unnecessarily while the antenna is transmitting or receiving. Contact with antennas affects the communication quality and may cause a higher power level during operation and may reduce the computer battery life.

Insert the SIM card



Warning: Keep the protection cap out of the reach of small children.

1. Remove the protection cap (6).
2. Lift the cover of the SIM card slot (7).
3. Insert the SIM card (8).
Make sure the contact surface on the card is facing down, and the beveled corner is on the right.
4. To close the cover, press it against the device (9), and slide it into place.

ENGLISH

First time setup

To set up the device for your computer, you may need the administrator rights for the operating system. You may also need to change the firewall settings of your operating system to let the device access the internet.

1. Make sure a SIM card is inserted in the device.
2. Remove the protection cap from the USB plug.
3. Switch on your computer, and connect the device to the USB port on the computer, so that the Nokia logo is facing up.



Tip: To connect the device to a compatible computer using the Nokia

Connectivity Cable CA-175D, connect the cable to the USB plug and the USB port on the computer.

4. To install the device and the Nokia Internet Modem application, do one of the following:

- In Windows, the installer opens automatically if the autorun feature is enabled.
- In Mac OS, double-click the Nokia Internet Stick CS-18 setup icon and then the Nokia Internet Modem icon.
- In Linux, double-click the CD drive and then the nokialinternetmodem.deb icon. Select Install Package.

5. Select the desired language from the list, and select **OK**. Follow the displayed instructions.

Carefully read the end-user license agreement and accept it.

The application and the needed drivers are installed on your computer. The installation may take several minutes.



ENGLISH



6. Based on your SIM card, the device automatically tries to define the settings for the cellular network of your service provider (operator).
7. When prompted, enter the personal identification number (PIN) code of your SIM card. The PIN code helps to protect your SIM card against unauthorized use and is usually supplied with the card.
The main view of the Nokia Internet Modem application is displayed.
8. To exit the Nokia Internet Modem application, select X.
9. To disconnect the device from the computer, unplug the device from the USB port.

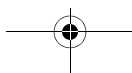
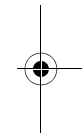
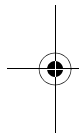
You may need to stop the device before disconnecting it, if your operating system supports this function.

Indicator light

If the indicator light is red, the device cannot register to a cellular network because the SIM card is not valid or properly inserted or cannot find a supported network in your location. If the red light flashes, the device is not registered to a cellular network because you have not entered the PIN code, if the PIN code request is enabled in the Nokia Internet Modem application.

If the indicator light is green, the device is registered to a GSM network and transferring data. If the green light flashes, the device is registered to a GSM network, but the data connection is not active.

If the indicator light is blue, the device is registered to a 3G network and transferring data. If the blue light flashes, the device is registered to a



ENGLISH

3G network, but the data connection is not active.

Insert a microSD card

The device includes a microSD card reader that you can use to save files to your compatible memory card. The memory card is shown as a removable disk in your operating system.

Keep all microSD memory cards out of the reach of small children.

Use only compatible microSD cards approved by Nokia for use with this device. Nokia uses approved industry standards for memory cards, but some brands may not be fully compatible with this device. Incompatible cards may damage the card and the device and corrupt data stored on the card.

To insert a microSD card:

1. Open the cover of the memory card slot (10).

2. Insert the card into the slot with the contact surface facing down (11).

3. Close the cover (12).

To remove the card, open the cover (13), press the card gently (14) and pull it out, and close the cover (15).

Uninstall


To uninstall the device and the Nokia Internet Modem application from your computer, do one of the following:

- In Windows, select the uninstall application from the Start menu.
- In Mac OS, select the uninstall icon in the Nokia folder.
- In Linux, use the package manager.

ENGLISH

Connect to the internet

For the availability of data services, pricing, and tariffs, contact your service provider.


1. When a SIM card is inserted in the device, switch on the computer, and connect the device to the computer.
2. If the Nokia Internet Modem application does not start automatically, do one of the following:
 - In Windows, start the application from the Start menu. For example, in Windows XP, select Start > Programs > Nokia > Nokia Internet Modem > Nokia Internet Modem.
 - In Mac OS, select the application from the Finder.
3. If prompted, enter the PIN code of your SIM card.
4. Check the network indicator light to see whether a network connection is available.
5. To connect to the internet, select [Internet Connection](#) > . Start using the connection with the software you want.


- In Linux, select Applications > Internet > Nokia Internet Modem.

During data transfer, the [Internet Connection](#) window shows the transmission rate of sent ([Rate out](#)) and received ([Rate in](#)) data, the duration of the current session, and the total amount of data sent and received during the session ([Volume](#)).

ENGLISH

If the computer enters standby or hibernation mode, data transfer may stop. Using the device for data transfer increases the demand on computer battery power and reduces the battery life.

To exit the application, select X. This also closes the connection.
To minimize the application without closing the active connection, select . To restore the application window, select the icon of the minimized application.

- To close the connection, in the [Internet Connection](#) window, select .

Taking care of your device

Your device is a product of superior design and craftsmanship and should be treated with care. The following suggestions will help you protect your warranty coverage.

- Keep the device dry. Precipitation, humidity, and all types of liquids or moisture can contain minerals that will corrode electronic circuits. If your device does get wet, allow it to dry completely.
- Do not use or store the device in dusty, dirty areas. Its moving parts and electronic components can be damaged.
- Do not store the device in high or cold temperature. High temperatures can shorten the life of electronic devices, damage batteries, and warp or melt certain plastics. When the device warms to its normal temperature from a cold temperature, moisture



ENGLISH



can form inside the device and damage electronic circuit boards.

- Do not attempt to open the device other than as instructed in this guide.
- Do not drop, knock, or shake the device. Rough handling can break internal circuit boards and fine mechanics.
- Do not use harsh chemicals, cleaning solvents, or strong detergents to clean the device. Only use a soft, clean, dry cloth to clean the surface of the device.
- Do not paint the device. Paint can clog the moving parts and prevent proper operation.

These suggestions apply equally to your device or any accessory.

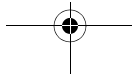
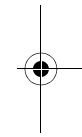
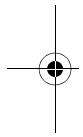
Recycle

Always return your used electronic products, batteries, and packaging materials to dedicated collection points. This way you help prevent uncontrolled waste disposal and promote the recycling

of materials. Check product environmental information and how to recycle your Nokia products at www.nokia.com/werecycle, or nokia.mobi/werecycle.



The crossed-out wheeled-bin symbol on your product, battery, literature, or packaging reminds you that all electrical and electronic products, batteries, and accumulators must be taken to separate collection at the end of their working life. This requirement applies in the European Union. Do not dispose of these products as unsorted municipal waste. For more environmental information, see the product Eco-Declarations at www.nokia.com/environment.



ENGLISH

Additional safety information

■ Small children

Your device and its accessories are not toys. They may contain small parts. Keep them out of the reach of small children.

■ Operating environment

This device model has been tested and meets RF exposure guidelines when positioned at least 0.5 centimetres (1/5 inches) away from the body when plugged directly into a USB port on the host device or used at the end of the Nokia Connectivity Cable CA-175D that may be supplied in the sales package.

■ Medical devices

Operation of any radio transmitting equipment, including wireless phones,

may interfere with the function of inadequately protected medical devices. Consult a physician or the manufacturer of the medical device to determine whether they are adequately shielded from external RF energy. Switch off your device when regulations posted instruct you to do so. Hospitals or health care facilities may use equipment sensitive to external RF energy.

Implanted medical devices

Manufacturers of medical devices recommend a minimum separation of 15.3 centimeters (6 inches) between a wireless device and an implanted medical device, such as a pacemaker or implanted cardioverter defibrillator, to avoid potential interference with the medical device. Persons who have such devices should:

ENGLISH

- Always keep the wireless device more than 15.3 centimeters (6 inches) from the medical device.
- Turn the wireless device off if there is any reason to suspect that interference is taking place.
- Follow the manufacturer directions for the implanted medical device.

If you have any questions about using your wireless device with an implanted medical device, consult your health care provider.

Hearing aids

Some digital wireless devices may interfere with some hearing aids.

Vehicles

RF signals may affect improperly installed or inadequately shielded electronic systems in motor vehicles such as electronic fuel injection, electronic antilock braking, electronic speed

control, and air bag systems. For more information, check with the manufacturer of your vehicle or its equipment.

Only qualified personnel should service the device. Faulty service may be dangerous and may invalidate your warranty. Do not store or carry flammable liquids, gases, or explosive materials in the same compartment as the device, its parts, or accessories.

Switch off your device before boarding an aircraft. The use of wireless teledevices in an aircraft may be dangerous to the operation of the aircraft and may be illegal.

Potentially explosive environments

Switch off your device in any area with a potentially explosive atmosphere. Obey all posted instructions. Sparks in such areas could cause an explosion or fire resulting in bodily injury or death. Switch

ENGLISH

off the device at refuelling points such as near gas pumps at service stations. Observe restrictions in fuel depots, storage, and distribution areas; chemical plants; or where blasting operations are in progress. Areas with a potentially explosive atmosphere are often, but not always, clearly marked. They include areas where you would be advised to turn off your vehicle engine, below deck on boats, chemical transfer or storage facilities and where the air contains chemicals or particles such as grain, dust, or metal powders. You should check with the manufacturers of vehicles using liquefied petroleum gas (such as propane or butane) to determine if this device can be safely used in their vicinity.

Certification information (SAR)

This mobile device meets guidelines for exposure to radio waves.

Your device is a radio transmitter and receiver. It is designed not to exceed the limits for exposure to radio waves recommended by international guidelines. These guidelines were developed by the independent scientific organisation ICNIRP and include safety margins designed to assure the protection of all persons, regardless of age and health.

The exposure guidelines for mobile devices employ a unit of measurement known as the Specific Absorption Rate or SAR. The SAR limit stated in the ICNIRP guidelines is 2.0 watts/kilogram (W/kg) averaged over 10 grams of tissue. Tests for SAR are conducted using standard operating positions with the device transmitting at its highest certified power level in all tested frequency bands. The actual SAR level of an operating device can be below the maximum value because the device is designed to use only the power required to reach the network. That amount changes

ENGLISH

depending on a number of factors such as how close you are to a network base station.

SAR values may vary depending on national reporting and testing requirements and the network band. Additional SAR information may be provided under product information at www.nokia.com.

This device model has been tested and meets RF exposure guidelines when positioned at least 0.5 centimetres (1/5 inches) away from the body when plugged directly into a USB port on the

host device or used at the end of the Nokia Connectivity Cable CA-175D that may be supplied in the sales package.

Your device is also designed to meet the requirements for exposure to radio waves established by the Federal Communications Commission (USA) and Industry Canada. These requirements set a SAR limit of 1.6 W/kg averaged over one gram of tissue. The highest SAR value reported under this standard during product certification when positioned 0.5 cm (1/5 inches) away from the body is 1.02 W/kg.

FCC/Industry Canada notice

Your device may cause TV or radio interference (for example, when using a telephone in close proximity to receiving equipment). The FCC or Industry Canada can require you to stop using your telephone if such interference cannot be eliminated. If you require assistance, contact your local service facility. This device complies with

part 15 of the FCC rules. Operation is subject to the following two conditions: (1) This device may not cause harmful interference, and (2) this device must accept any interference received, including interference that may cause undesired operation. Any changes or modifications not expressly approved by Nokia could void the user's



ENGLISH



authority to operate this equipment. This transmitter must not be co-located or operating in conjunction with any other antenna or transmitter.

