

# Nokia 1600 User Guide

---

9240050

Issue 1

## DECLARATION OF CONFORMITY

We, NOKIA CORPORATION declare under our sole responsibility that the product RH-64 is in conformity with the provisions of the following Council Directive: 1999/5/EC.

A copy of the Declaration of Conformity can be found at  
[http://www.nokia.com/phones/declaration\\_of\\_conformity/](http://www.nokia.com/phones/declaration_of_conformity/).

**CE 168**

Part No. 9240050, Issue No. 1

Copyright© 2005 Nokia. All rights reserved.

Reproduction, transfer, distribution or storage of part or all of the contents in this document in any form without the prior written permission of Nokia is prohibited.

US Patent No 5818437 and other pending patents. T9 text input software Copyright (C) 1997-2005. Tegic Communications, Inc. All rights reserved.

Nokia, Nokia Connecting People, Xpress-on, Nokia 1600, and the Nokia Original Enhancements logo are trademarks or registered trademarks of Nokia Corporation. Other product and company names mentioned herein may be trademarks or tradenames of their respective owners.

Nokia tune is a sound mark of Nokia Corporation.

The information contained in this user guide was written for the Nokia 1600 product. Nokia operates a policy of ongoing development. Nokia reserves the right to make changes to any of the products described in this document without prior notice.

UNDER NO CIRCUMSTANCES SHALL NOKIA BE RESPONSIBLE FOR ANY LOSS OF DATA OR INCOME OR ANY SPECIAL, INCIDENTAL, AND CONSEQUENTIAL OR INDIRECT DAMAGES HOWSOEVER CAUSED.

THE CONTENTS OF THIS DOCUMENT ARE PROVIDED "AS IS." EXCEPT AS REQUIRED BY APPLICABLE LAW, NO WARRANTIES OF ANY KIND, EITHER EXPRESS OR IMPLIED, INCLUDING, BUT NOT LIMITED TO, THE IMPLIED WARRANTIES OF MERCHANTABILITY AND FITNESS FOR A PARTICULAR PURPOSE, ARE MADE IN RELATION TO THE ACCURACY AND RELIABILITY OR CONTENTS OF THIS DOCUMENT. NOKIA RESERVES THE RIGHT TO REVISE THIS DOCUMENT OR WITHDRAW IT AT ANY TIME WITHOUT PRIOR NOTICE.

**EXPORT CONTROLS**

This device may contain commodities, technology, or software subject to export laws and regulations from the U.S. and other countries. Diversion contrary to law is prohibited.

**FCC/INDUSTRY CANADA NOTICE**

Your device may cause TV or radio interference (for example, when using a telephone in close proximity to receiving equipment). The FCC or Industry Canada can require you to stop using your telephone if such interference cannot be eliminated. If you require assistance, contact your local service facility. This device complies with part 15 of the FCC rules. Operation is subject to the condition that this device does not cause harmful interference.

# Table of contents

---

<b>1. Get started .....</b>	<b>11</b>
Keys and parts.....	11
Insert a SIM card and battery .....	11
Charge the battery.....	12
Switch on or off .....	13
Change the cover .....	13
Demo mode.....	14
Shortcuts in the standby mode.....	14
Lock the keypad.....	15
<b>2. Call functions.....</b>	<b>16</b>
Make a call .....	16
Make a conference call.....	16
Redial a number.....	16
1-touch dial .....	16
Answer a call.....	17
Loudspeaker.....	17
Voice messages (network service).....	17
<b>3. Write text.....</b>	<b>18</b>
<b>4. Menu functions .....</b>	<b>20</b>
Messages .....	20
Create a message .....	20
Read a text message (Inbox).....	21
Drafts and sent items.....	21
Chat (network service).....	21
Picture messages (network service).....	22
Distribution lists .....	22
Screened messages .....	22
Delete messages .....	22
Message counter .....	23
Message settings.....	23
Service com. editor (network service).....	24
Contacts.....	24
Find a name and phone number .....	24
Settings for Contacts .....	25
Call log .....	25
Recent call lists.....	26

## Table of contents

Call timers.....	26
Message counter.....	26
Settings.....	26
Tone settings.....	26
Display settings.....	27
Profiles.....	28
Time settings.....	28
Call settings.....	28
Phone settings.....	29
Cost settings.....	30
Enhancement settings.....	30
Security settings.....	30
Right selection key setting.....	31
Restore factory settings.....	32
Clock.....	32
Reminders.....	32
Games.....	33
Extras.....	33
Calculator.....	33
Converter.....	33
Speaking clock.....	33
Countdown timer.....	34
Stopwatch.....	34
Composer.....	34
Demo mode.....	34
<b>5. Battery information.....</b>	<b>35</b>
Battery information.....	35
Charging and discharging.....	35
Nokia battery authentication guidelines.....	35
<b>6. Enhancements.....</b>	<b>38</b>
Power.....	38
Audio.....	38
Car.....	39
Covers and carrying.....	39
<b>7. Reference information.....</b>	<b>40</b>
Additional safety information.....	40
Operating environment.....	40
Medical devices.....	40
Vehicles.....	41
Potentially explosive environments.....	42

## Table of contents

Emergency calls .....	42
Certification information (SAR).....	43
Technical information .....	44
<b>Care and maintenance .....</b>	<b>45</b>
<b>Index.....</b>	<b>46</b>

## For your safety

---

Read these simple guidelines. Not following them may be dangerous or illegal. Read the complete user guide for further information.



### SWITCH ON SAFELY

Do not switch the phone on when wireless phone use is prohibited or when it may cause interference or danger.



### ROAD SAFETY COMES FIRST

Obey all local laws. Always keep your hands free to operate the vehicle while driving. Your first consideration while driving should be road safety.



### INTERFERENCE

All wireless phones may be susceptible to interference, which could affect performance.



### SWITCH OFF IN HOSPITALS

Follow any restrictions. Switch the phone off near medical equipment.



### SWITCH OFF IN AIRCRAFT

Follow any restrictions. Wireless devices can cause interference in aircraft.



### SWITCH OFF WHEN REFUELING

Do not use the phone at a refueling point. Do not use near fuel or chemicals.



### SWITCH OFF NEAR BLASTING

Follow any restrictions. Do not use the phone where blasting is in progress.



### USE SENSIBLY

Use only in the normal position as explained in the product documentation. Do not touch the antenna unnecessarily.



### QUALIFIED SERVICE

Only qualified personnel may install or repair this product.



### ENHANCEMENTS AND BATTERIES

Use only approved enhancements and batteries. Do not connect incompatible products.

## For your safety



### WATER-RESISTANCE

Your phone is not water-resistant. Keep it dry.



### BACK-UP COPIES

Remember to make back-up copies or keep a written record of all important information stored in your phone.



### CONNECTING TO OTHER DEVICES

When connecting to any other device, read its user guide for detailed safety instructions. Do not connect incompatible products.



### EMERGENCY CALLS

Ensure the phone is switched on and in service. Press the end key as many times as needed to clear the display and return to the start screen. Enter the emergency number, then press the call key. Give your location. Do not end the call until given permission to do so.

## ■ About your device

The wireless device described in this guide is approved for use on the GSM 850/1900 and GSM 900/1800 networks. Contact your service provider for more information about networks.

When using the features in this device, obey all laws and respect privacy and legitimate rights of others.



**Warning:** To use any features in this device, other than the alarm clock, the device must be switched on. Do not switch the device on when wireless device use may cause interference or danger.

## ■ Network services

To use the phone you must have service from a wireless service provider. Many of the features in this device depend on features in the wireless network to function. These network services may not be available on all networks or you may have to make specific arrangements with your service provider before you can utilize network services. Your service provider may need to give you additional instructions for their use and explain what charges will apply. Some networks may have limitations that affect how you can use network services. For instance, some networks may not support all language-dependent characters and services. Your service provider may have requested that certain features be disabled or not activated in your device. If so, they will not appear on your device menu. Your device may also have been specially configured. This configuration may include



changes in menu names, menu order and icons. Contact your service provider for more information.

## ■ Chargers and enhancements

Always switch the device off and disconnect the charger before removing the battery.

Check the model number of any charger before use with this device. This device is intended for use when supplied with power from the ACP-7 and ACP-12 chargers.



**Warning:** Use only batteries, chargers, and enhancements approved by Nokia for use with this particular model. The use of any other types may invalidate any approval or warranty, and may be dangerous.

For availability of approved enhancements, please check with your dealer. When you disconnect the power cord of any enhancement, grasp and pull the plug, not the cord.

## General information

---

### ■ Access codes

For details about access codes and their operations, see "Security settings," p. 30.

- **Security code:** This code, supplied with the phone, helps to protect your phone against unauthorized use. The preset code is 12345.
- **PIN code:** This code, supplied with the SIM card, helps to protect the card against unauthorized use.

To set your phone to request the PIN code each time it is switched on, in the standby mode, select [Menu](#) > [Settings](#) > [Security settings](#) > [PIN code request](#), enter the PIN code, and select [On](#).

If you enter the PIN code incorrectly three times in succession, the SIM card is blocked. You must enter the PUK code to unblock the SIM card and set a new PIN code.

- **PIN2 code:** This code is supplied with some SIM cards and is required to access certain services, such as call cost settings. If you enter the PIN2 code incorrectly three times in succession, [PIN2 code blocked](#) appears on the display, and you will be asked for the PUK2 code.

Change the security code, PIN code and PIN2 code in [Change access codes](#) in the [Security settings](#) menu (see "Security settings," p. 30). Keep the new codes secret and in a safe place separate from your phone.

- **PUK and PUK2 code:** These codes may be supplied with the SIM card. If this is not the case, contact your local service provider.

### ■ Shared memory

The following features in this device may share memory: [Messages](#), [Contacts](#), and [Composer](#). Use of one or more of these features may reduce the memory available for the remaining features sharing memory. For example, saving many text messages may use all of the available memory. Your device may display a message that the memory is full when you try to use a shared memory feature. In this case, delete some of the information or entries stored in the shared memory features before continuing. Some of the features, such as [Contacts](#) may have a certain amount of memory specially allotted to them in addition to the memory shared with other features.

# 1. Get started

## ■ Keys and parts

The display indicators described below are shown when the phone is ready for use and no characters have been keyed in. This state is called the standby mode.

Signal intensity of the cellular network (1)

Battery bar indicating battery charge level (2)

Current function of the two selection keys (3)

Selection keys (4)

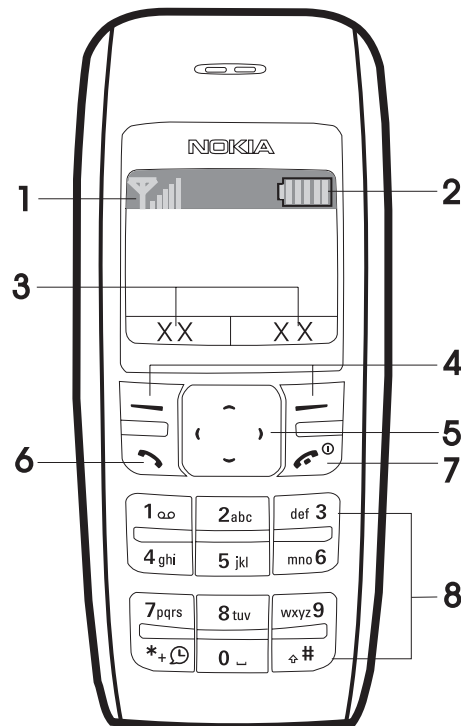
The function of the selection keys depends on the text shown on the display above them.

Scroll keys (5)

The call key dials a phone number or answers a call. (6)

Press and hold the end key to switch the phone on or off; briefly press the end key to end a call or exit from a function. (7)

Keypad (8)



## ■ Insert a SIM card and battery

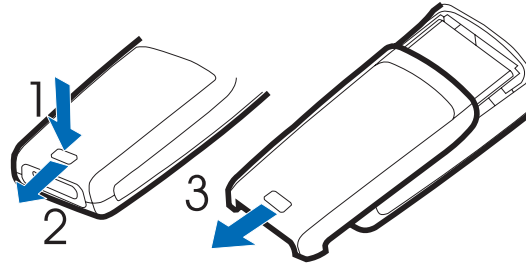
Keep all SIM cards out of the reach of small children.

For availability and information on using SIM card services, contact your SIM card vendor. This may be the service provider, network operator, or other vendor.

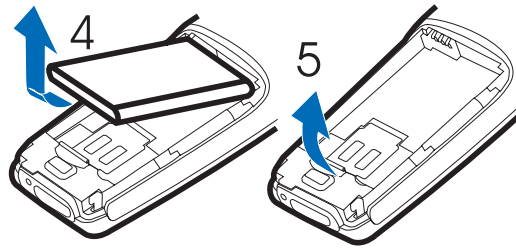
This phone is intended for use with BL-5C battery.

## Get started

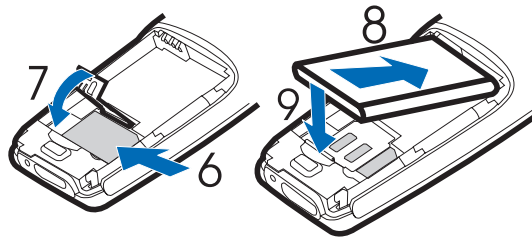
1. Press the back cover release button (1), open the back cover, and remove it (2, 3).



2. Lift the battery (if present) and remove it (4), and carefully lift the SIM card holder (5).



3. Insert the SIM card (6). Make sure that the SIM card is properly inserted, and that the gold-colored contact area on the card is facing downward.

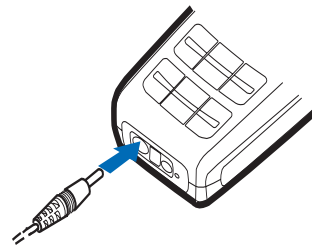


4. Close the SIM card holder (7), and press it to lock it into place.
5. Insert the battery (8, 9).
6. Replace the back cover.

## ■ Charge the battery

1. Connect the charger to an ac wall outlet.
2. Connect the plug from the charger to the base of the phone. The battery indicator bar starts scrolling.

If *Not charging* is displayed, wait for a while, disconnect the charger, plug it in again, and retry. If charging still fails, contact your dealer.



3. When the battery is fully charged, the bar stops scrolling. Disconnect the charger from the phone and the ac outlet.

The BL-5C battery provides up to 6 hours of talk time, and up to 18 days of standby time. Operation times are estimates and may vary depending on network conditions, charging, and device use.

## ■ Switch on or off

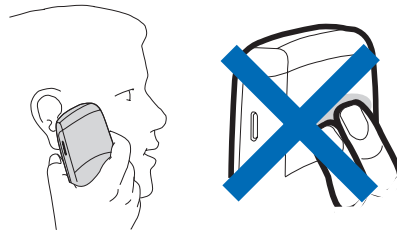
Press and hold the end key for a few seconds.



**Warning!** Do not switch on the phone when wireless phone use is prohibited or when it may cause interference or danger.

Use the phone only in its normal operating position.

Your device has an internal antenna.



**Note:** As with any other radio transmitting device, do not touch the antenna unnecessarily when the device is switched on. Contact with the antenna affects call quality and may cause the device to operate at a higher power level than otherwise needed. Avoiding contact with the antenna area when operating the device optimizes the antenna performance and the battery life.

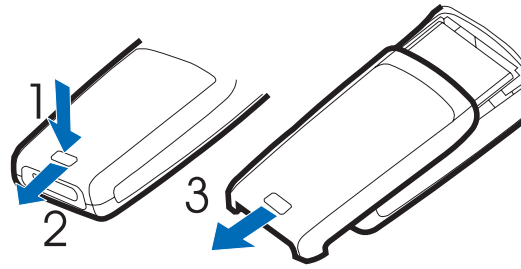
## ■ Change the cover



**Note:** Always switch off the power and disconnect the charger and any other device before removing the cover. Avoid touching electronic components while changing the cover. Always store and use the device with the cover attached.

## Get started

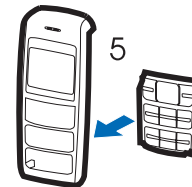
1. Press the back cover release button (1), open the back cover, and remove it (2, 3).



2. Take off the front cover carefully (4).



3. Insert the keymat in the new front cover (5).



4. Align the top of the front cover to the top of the phone, and press the front cover to lock it into place (6,7).



5. Replace the back cover.

## ■ Demo mode

You may view how to use certain features of your phone. To access the demo, use one of two ways:

- If the SIM card is not installed, select **Demo**.

*Basics*—To view a demo of *Make a call*, *Answer a call*, *Send text msg.*, or *Set an alarm*

*More*—To view a demo of *Speaking clock*, *Ring tones*, or *Themes*.

- If the SIM card is installed, select **Menu** > **Extras** > **Demo** > **Basics** or **More**; or scroll right in the standby mode.

## ■ Shortcuts in the standby mode

Scroll up to access *Call log*.

Scroll down to access the names and numbers saved in *Contacts*.

Scroll left to write a message.

Scroll right to access the demo mode.

Press and hold \* to activate the speaking clock.

Press the call key once to access the list of dialed numbers. Scroll to the name or number that you want, and press the call key to call the number.

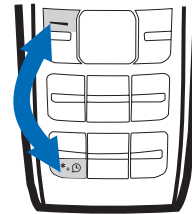
## ■ Lock the keypad

The keypad lock helps to prevent keys from being pressed accidentally.

To lock the keypad, in the standby mode, select **Menu**, and press \* quickly; to unlock, select **Unlock**, and press \* quickly.

To automatically turn on the keylock, see "Phone settings," p. 29.

When the keypad lock is on, calls may be possible to the official emergency number programmed into your device.



## 2. Call functions

---

### ■ Make a call

1. Enter the phone number and the area code if necessary.  
To make international phone calls, press \* twice quickly to display the plus sign (+), add the country (or region) code, then the area code. Delete the leading 0 if necessary.  
To delete the last digit entered, select **Clear**.
2. Press the call key to call the number. Scroll right to increase or scroll left to decrease the volume of the earpiece or headset during the phone call.
3. Press the end key to end the call (or to cancel the call attempt).

### Make a conference call

Conference call (network service) allows up to five people to participate in the same call.

1. To make a call to a new participant, select **Options > New call**; select **Clear** to clear the screen if necessary. Enter the number you want, and press the call key.
2. When the new call is answered, add it to the conference call by selecting **Options > Conference**.

### Redial a number

To redial one of the last twenty phone numbers that you have called or attempted to call, press the call key once in the standby mode, scroll to the phone number or name that you want, and press the call key.

### 1-touch dial

In the standby mode, select **Menu > Contacts > 1-touch dial**, and one of the following options:

- **On** or **Off** to set 1-touch dial on or off
- **Edit** to edit the 1-touch dial list



Scroll to select the number key you want (2 to 9), and select **Assign**; choose if you want to assign to call or to SMS, and select the name you want.

To dial a number using 1-touch dial, press and hold the relevant assigned number key in the standby mode.

## ■ Answer a call

When there is an incoming call, press the call key to answer. To reject the call without answering, press the end key.

## ■ Loudspeaker

If available, you may select **Loudsp.** or **Hands.** to use the loudspeaker or the earpiece of the phone during a call.



**Warning:** Do not hold the device near your ear when the loudspeaker is in use, because the volume may be extremely loud.



## ■ Voice messages (network service)

To receive your voice mailbox number, contact your service provider. To call your voice mailbox, press and hold 1 in the standby mode. You may need to enter the number when calling for the first time. To change the voice mailbox number, see "Settings for Contacts," p. 25.

To forward calls to your voice mailbox, see "Call settings," p. 28.

## 3. Write text

---

You can enter text in two different ways: traditional text input , or predictive text input .

To use traditional text input, repeatedly press the key marked with the letter that you want until the letter appears.

Not all characters available under a number key are printed on the key. The characters available depend on the *Language* you have chosen. See "Phone settings," p. 29.

To enter a letter that is on the same key as the previous one, wait until the cursor appears, or press any of the scroll keys, and then enter the letter.

The most common punctuation marks and special characters are available by pressing the number key 1.

### ■ Set predictive text

To set predictive text, select **Options** > *Predictive text* while you are writing a message.

- To set the predictive text input on, select a language in the predictive text options list. Predictive text input is only available for the languages on the list.
- To change back to the traditional text input, select *Prediction off*.

To use predictive text input, follow these steps:

1. Enter the word you want by pressing each key once for a single letter. The word changes after each keystroke. For example, to write "Nokia" when the English predictive text is selected, press 6, 6, 5, 4, 2.
2. If the displayed word is the one you want, press 0, and start writing the next word.

If you want to change the word, press \* repeatedly until the word you want appears.

If ? is displayed after the word, the word is not in the dictionary. To add the word to the dictionary, select **Spell**, enter the word (using traditional text input), and select **OK**.

To add a compound word with predictive input, enter the first half of the word, scroll right, and enter the second half.

Tips for writing text with traditional and predictive text input:

- To move the cursor left, right, up, or down, press the respective scroll key.
- To add a space, press **O**.
- To delete the character to the left of the cursor, select **Clear**. To clear all the text you have entered, press and hold the right selection key.
- To switch between upper and lower cases, or between traditional and predictive text input when predictive text input is selected, press **#** repeatedly and check the indicator at the top of the display.
- To switch between letters and numbers, press and hold **#**.
- To add a number, press and hold the desired number key.
- To get a list of special characters when using traditional text input, press **\***; when using predictive text input, press and hold **\***. In traditional text input, you can also add punctuation marks and certain special characters by pressing **1** repeatedly.

## 4. Menu functions

---

In the standby mode, select **Menu** and the desired menu and submenu. Select **Exit** or **Back** to exit the current level of menu. Press the end key to return to the standby mode directly.

### ■ Messages



#### Create a message

Your device supports the sending of text messages beyond the character limit for a single message. Longer messages will be sent as a series of two or more messages. Your service provider may charge accordingly. Characters that use accents or other marks, and characters from some language options like Chinese, take up more space, limiting the number of characters that can be sent in a single message.

The number of available characters/the current part number of a multipart message is shown on the top right of the display, for example, 902/1.

To send a message, the phone number of your message center has to be saved in the phone. See "Message settings," p. 23.

1. In the standby mode, select **Menu** > **Messages** > **Create message**.
2. Write the message. The number of available characters and the current part number are shown on the top right of the display.
3. When the message is complete, select **Options** > **Send**, enter the recipient's phone number, and select **OK**.

You can send the message to several people if you have saved them in your contact list. (See "Contacts," p. 24.) Select **Options** > **Sending options** > **Send to many**, scroll to the first recipient, and select **OK**. Repeat this for each recipient. When you have finished, select **Done**.

To send a message to a predefined distribution list, select **Options** > **Sending options** > **Send to list**. For details about distribution list, see "Distribution lists," p. 22.

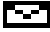


**Note:** When sending messages, your device may display **Message Sent**. This is an indication that the message has been sent by your device to the message center number programmed into your device. This is not

an indication that the message has been received at the intended destination. For more details about messaging services, check with your service provider.

When you edit a message, if you selected **Options** > *Clear text*, you can restore the text you just cleared. If you have not entered any new text, or changed input method, language, or predictive text mode, select **Options** > *Undo clear* to restore the cleared text.

## Read a text message (Inbox)

When you receive text messages, the number of new messages and  are shown on the display in the standby mode.

Select **Show** to view the messages immediately.

To view the messages later, select **Exit**. When you want to read the messages, select **Menu** > *Messages* > *Inbox* and the desired message.

## Drafts and sent items

In the *Drafts* menu, you can view the messages that you saved with the *Save message* menu. In the *Sent items* menu, you can view the copies of the messages that you sent.

## Chat (network service)

You can have a conversation with other people using this text message service. Each chat message is sent as a separate text message. The messages received and sent during a chat session are not saved.

To start a chat session, select **Menu** > *Messages* > *Chat*; or, when reading a received text message, select **Options** > *Chat*.

1. Enter the person's phone number or search for it in the *Contacts*, and select **OK**.
2. Enter your nickname for the chat session, and select **OK**.
3. Enter your message, and select **Options** > *Send*.
4. The reply from the other person is displayed above the message you sent. To reply to the message, select **Back**, and repeat step 3.

While you are writing a message, you can select **Options** > *Chat name* or *Chat history* to edit your nickname or view the previous messages.

## Picture messages (network service)

You can receive and send messages that contain pictures. Received picture messages are saved in the *Inbox*. Each picture message comprises several text messages. Therefore, sending one picture message may cost more than one text message.



**Note:** The picture message function can be used only if it is supported by your network operator or service provider. Only compatible devices that offer picture message features can receive and display picture messages. The appearance of a message may vary depending on the receiving device.

To create a picture message, select **Menu** > *Messages* > *Picture messages*. Scroll to the picture you want, and select **Use**. Add text if you want, and select **Options** > *Send*.

To view the message immediately, select **Show**.

## Distribution lists

You can define up to six distribution lists with up to ten recipients in each. To add a new distribution list in the standby mode, select **Menu** > *Messages* > *Distribution lists* > **Options** > *Add list*. Give the distribution list a name, and select **OK**.

To add a name to a distribution list, scroll to the desired distribution list, select **Options** > *View list* > **Options** > *Add contact*. Each message to every recipient will be charged separately.

## Screened messages

Messages from screened numbers are saved here. See "*No. screening*," p. 23. To view the screened messages, select **Menu** > *Messages* > *Screened messages* and the desired message.

When you view a screened message, select **Options** > *Delete* to delete the message, or *Delete from list* to delete the number from the list of screened numbers.

## Delete messages

To delete all read messages or all the messages in a folder, select **Menu** > *Messages* > *Delete messages* > *All read* or the desired folder.

## Message counter

Select **Menu** > *Messages* > *Message counter*. Scroll down to view the number of sent and received messages. To reset the message counters, select *Clear counters* and the counters you want to reset.

## Message settings

To view or edit your text message settings in the standby mode, select **Menu** > *Messages* > *Message settings* and one of the following options:

*Info service* (network service)—To receive messages on various topics such as traffic conditions, and to manage the topics

For more information, please contact your service provider.

*Templates*—To view, edit, or delete the preset messages that can be used to write a message

*Smileys*—To view, edit, or delete preset smileys that you can use in messages

*Signatures*—To manage the signature that will be added to your message

Select *Include sig.* to set the automatic insertion of signature on or off; select *Signature text* to edit your signature.

*Sending profile*—To manage your sending profiles

Select your desired profile and one of the following options:

- *Message center number* to save the phone number needed to send text and picture messages. You obtain this number from your service provider.
- *Messages sent as* (network service) to choose the message type *Text*, *Fax*, *Paging*, or *E-mail*
- *Message validity* (network service) to choose how long the network should attempt to deliver your message
- *Rename sending profile* to change the name of the sending profile

*Delivery reports* (network service)—To request the network to send delivery reports on your messages

*Reply via same center* (network service)—To allow the recipient to reply through your message center

*Character support* (network service)—To set whether the *Full* or *Reduced* coding is used when sending a text message

*No. screening*—To view or edit the list of filtered numbers

## Menu functions

Scroll to a number, and select **Options** > *Add number* or *Delete from list* to add a number to the filtered list or delete the highlighted number from the list.

Messages from the filtered numbers are saved directly to the *Screened messages* folder.

When a filtered number calls, your phone will not ring or vibrate, regardless of the mode. If the call is not answered, it will be stored in the folder of *Missed calls* under *Call log*.

## **Service com. editor (network service)**

Select *Service com. editor* to send service requests to your service provider. For more information, contact your service provider.

## ■ **Contacts**

You can save names and phone numbers in the phone memory and in the SIM card memory. The internal contact list can store up to 200 names.



## **Find a name and phone number**

In the standby mode, select **Menu** > *Contacts* > *Find*. Enter the first letters of the name you are looking for, and select *Find*. Scroll up or down to find the name you want.

To perform a quick search, scroll down in the standby mode, and enter the first letters of the name. Scroll to the name that you want.

You can also use the following options in the *Contacts* menu:

*Add name*—To save names and phone numbers in the contact list

*Delete*—To delete names and phone numbers from the contact list individually or all at once

*Copy*—To copy names and phone numbers all at once or one by one from the internal contact list to the SIM contact list, or vice versa

*Settings*: See "Settings for Contacts," p. 25.

*1-touch dial*.—To activate the 1-touch dial function and to edit the numbers assigned to the 1-touch dial keys

*No. screening*: See "*No. screening*," p. 23.



*Service numbers* (network service)—To call the service numbers of your service provider if the numbers are included on your SIM card

*Info numbers* (network service)—To call the information numbers of your service provider if the numbers are included on your SIM card

## Settings for Contacts



In the standby mode, select **Menu** > *Contacts* > *Settings* and one of the following options:

*Voice mailbox number* (network service)—To save and change the phone number of your voice mailbox

*Memory in use*—To select whether the names and phone numbers are saved in *Phone* or *SIM card*

When you change the SIM card, *SIM card* memory is automatically selected.

*Contacts view*—To select how the names and phone numbers are shown

When you view the **Details** of a contact with *Contacts view* set to *Name list* or *Name only*, the name or phone number saved in the SIM card memory is indicated by  at the upper right corner of the display and the name or phone number saved in the phone memory is indicated by .

*Memory status*—To check how many names and phone numbers are already saved and how many can still be saved in each contact list

*Contact images*—To select whether the icons are displayed with the names and numbers in the contact list

When *Contact images* is set to *On*, you may select an icon when you add a new contact in the contact list. To change the icon for a contact that you are viewing, select **Options** > *Change image*.

## ■ Call log

The phone logs the phone numbers of missed, received, and dialed calls, the approximate length of your calls, and the number of sent and received messages.



The phone logs missed and received calls if it is switched on, within the network service area, and the network supports these functions.

## Recent call lists

In the standby mode, select **Menu** > *Call log* > *Missed calls*, *Received calls*, or *Dialed numbers* > **Options** to view the time of the call; edit, view or call the logged phone number; add it to the contact list or to the list of screened numbers; or delete it from the recent call list. You can also send a text message.

To reset the recent call lists, in the standby mode, select **Menu** > *Call log* > *Delete recent call lists*, and select the lists you want to reset.

## Call timers

Select **Menu** > *Call log* > *Call timers* to view the approximate duration of the last call, all received calls, all dialed calls, or the approximate duration of all calls.

To reset the timers, select *Clear timers*, enter the security code, and select **OK**.



**Note:** The actual invoice for calls and services from your service provider may vary, depending upon network features, rounding off for billing, taxes, and so forth.

## Message counter

The *Message counter* menu is also located in the *Messages* main menu. See "Message counter," p. 23.

## ■ Settings

In this menu, you can adjust various phone settings. To reset some menu settings to their default values, select *Restore factory settings*.



## Tone settings

Select **Menu** > *Settings* > *Tone settings* and one of the following options:

*Ring tone*—To set the tone for incoming calls

*Ring volume*—To set the volume level for the ringing and message alert tones. If you set *Ring volume* to be level 2 or above, your phone rings with the ringing volume ascending from level 1 to the level you have set when there is an incoming call.

*Vibrating alert*—To set the phone to vibrate when you receive a call or a text message

*Message alert tone*—To set the tone to sound when you receive a text message

*Keypad tones*—To set the volume for keypad tones

*Warning tones*—To set the phone to sound tones, for example, when the battery is running out of power

*Rhythmic backlight alert*—To set the phone backlight to follow the rhythm of the ringing tone when there is an incoming call or message

## Display settings

Select **Menu** > *Settings* > *Display settings* and one of the following options:

*Themes*—To set and edit a theme for the phone display

Highlight the theme that you want, select **Options** and one of the following options:

- *Activate* > *Current profile* or *All profiles* to use the theme with only the current profile or with all profiles
- *Preview* to preview the theme on the display
- *Edit* to edit the theme

Select the *Wallpaper* for display in the standby mode, and *Menu background*, and *Color schemes* for the theme.

*Color schemes* to adjust the color scheme of the theme in use

*Power saver clock*—To set the phone to show the digital or classic clock and all the main display icons as a screen saver

Select *Digitalclock* or *Classic clock* to use the digital or classic clock as the screen saver; select *off* to turn off the *Power saver clock*.

*Operator logo* (network service)—To set the operator logo on or off in the standby mode

*Cell info display* (network service)—To set the phone to indicate when it is used in a cellular network that is based on Micro Cellular Network (MCN) technology

*Backlight time*—To select whether the backlights are switched on for 15 seconds (*Normal*), 30 seconds (*Extended*), or not at all (*Off*)

Even if *Off* is selected, the backlight stays on for 15 seconds when the phone is switched on.

*Brightness*—To modify the display brightness

## Menu functions

*Screen saver*—To turn the screen saver on or off, to set the time for turning on the screen saver (*Time-out*), or to select the picture for your screen saver (*Screen saver*)

## Profiles

You can customize the profiles to use certain features, such as ringing tones and screen saver.

Select **Menu** > *Settings* > *Profiles*. Select the profile that you want to modify, then *Customize*.

You can also change the settings of the currently selected profile in the *Tone settings* menu (see "Tone settings," p. 26), and *Display settings* menu (see "Display settings," p. 27).

To activate a profile in the standby mode, press the end key quickly, scroll to the desired profile, and select **OK**.

## Time settings

Select **Menu** > *Settings* > *Time settings* and one of the following options:

*Clock*—To hide or show the clock, to set the time, or to edit the time format

*Date setting*—To set the date

*Auto-update of date and time* (network service)—To set your phone to automatically update time and date from the network

Using this feature may cause some set alarms to expire.


If the battery was removed from the phone, you may need to set the time and date again.

## Call settings

Select **Menu** > *Settings* > *Call settings* and one of the following options:

*Call forwarding* (network service)—To forward your incoming calls to your voice mailbox or to some other phone number

Select the forward option you want, for example, *Forward if busy*, to forward the calls when you are on a call or when you reject a call.

Several forward options may be active at the same time. When *Forward all voice calls* is activated,  is shown on the display in the standby mode. To deactivate all call forwards, select *Cancel all call forwarding*.

To set the selected forward option on, select *Activate*; to set it off, select *Cancel*. To check if the selected option is active, select *Check status*; to specify a delay for certain forwards, select *Set delay time* (not available for all forward options).

*Automatic redial*—To set your phone to make up to ten attempts to connect the call after an unsuccessful call attempt

*Call waiting* (network service)—To let the network notify you of a new incoming call while you have a call in progress

*Send my caller ID* (network service)—To set your phone number to be displayed (*Yes*) or hidden (*No*) from the person you are calling

When you select *Default*, the setting agreed with your service provider is used.

*No. screening* —To view or edit the list of filtered numbers.

See "*No. screening*," p. 23.

*Line for outgoing calls* (network service)—To select either phone line 1 or 2 for making calls, or prevent line selection, if supported by your SIM card

## Phone settings

Select *Menu* > *Settings* > *Phone settings* and one of the following options:

*Language*—To select the language for the display texts

*Keyguard settings*

- *Automatic keyguard* > *On* to activate the automatic keyguard
  - Enter the delay time in the format of minutes:seconds, and select *OK*. You can set the time from 10 seconds to 59 minutes and 59 seconds. To deactivate the automatic keyguard, select *Off*.
- *Keyguard code* to activate the security keyguard
  - Enter the security code, and select *OK*. After you have selected *On*, the phone asks for the security code every time you select *Unlock*. To deactivate the security keyguard, select *Off*.

*Network selection*—To set the phone to automatically select a cellular network available in your area, or to select the network manually

*Start-up tone*—To switch on or off the tone that sounds when the phone is powered on

*Welcome note*—To enter a message that will be shown briefly on the display when the phone is switched on

*Confirm SIM service actions*. For more information, contact your service provider.

## Cost settings



**Note:** The actual invoice for calls and services from your service provider may vary, depending on network features, rounding off for billing, taxes and so forth.

Select **Menu** > **Settings** > **Cost settings** and one of the following options:

**Prepaid tracker** (network service)—To view information of prepaid credit

When using a prepaid SIM card, you can make calls only when there are enough credit units on the SIM card. Check with your service provider for availability.



**Note:** When no more charging units or currency units are left, calls may only be possible to the official emergency number programmed into the device.

**In-call timer**—To turn the call time display on or off

**Call summary**—To turn the approximate call time report on or off

**Call costs** (network service)—To view the approximate cost of your last call or all calls in terms of units specified within the **Show costs in** function

**Fixed dialing**—To restrict your outgoing calls to selected phone numbers, if allowed by your SIM cards (PIN2 code may be required).

## Enhancement settings

The accessory settings item becomes visible only after one of the accessories has been connected to the phone. The other accessory related items also become visible only after the corresponding accessory has been connected once to the phone.

Select **Menu** > **Settings** > **Enhancement settings** > **Headset** or **Loopset** and one of the following options:

**Default profile**—To select the profile the phone uses when the enhancement is connected

**Automatic answer**—To set the phone to automatically answer an incoming call after five seconds

## Security settings

When security features that restrict calls are in use (such as call restrictions, closed user group, and fixed dialing), calls still may be possible to the official emergency number programmed into your device.

Select **Menu** > **Settings** > **Security settings** and one of the following options:

*PIN code request*—To set your phone to ask for the PIN code of the SIM card when the phone is switched on

Some SIM cards do not allow this function to be turned off.

*Call restrictions* (network service)—To restrict the making and receiving of calls with your phone

Select one of the options and set the option on (*Activate*) or off (*Cancel*) or check a service is activated (*Check status*).

*Closed user group* (network service)—To specify a group of people whom you can call and who can call you

*Security level*—To control the use of your phone or the phone memory

Enter the security code. Select *Phone* to set the phone to ask for the security code when a new SIM card is inserted, select *Memory* to set the phone to ask for the security code when a new SIM card is inserted and you select the internal contact list, or select *Off* to set the phone to not ask for the security code when a new SIM card is inserted or the internal contact list is selected.

When you change the security level, all the recent calls lists, including missed calls, received calls, and dialed numbers, may be cleared.

*Change access codes*—To change the security code, PIN code, PIN2 code or restriction password

These codes can include the numbers 0 to 9 only.

Avoid using access codes similar to the emergency numbers to prevent accidental dialing of the emergency number.

## Right selection key setting

In the standby mode, you may select *Go to* to access a list of shortcuts. To define or organize the shortcuts, select *Menu* > *Settings* > *Go to settings* and one of the following options:

*Select options*—To select the functions that you want as shortcuts

Highlight the desired functions, and select *Mark*. The functions are listed in the shortcut list in the order that you select them. When you have finished selecting functions, select *Done* > *Yes* to save the changes.

*Organize*—To organize the order of the functions in the shortcut list

Highlight the function that you want to move, and select *Move* and the desired moving option. When you have finished organizing functions, select *Back* > *Yes* to save the changes.

## Restore factory settings

To reset some of the menu settings to their original values, select **Menu** > **Settings** > **Restore factory settings**. Enter the security code, and select **OK**. The names and phone numbers saved in the contact list are not deleted.

### ■ Clock

In the standby mode, select **Menu** > **Clock** and one of the following options:



**Alarm time**—To set the time for the alarm. Enter the time, and select **OK**.

**Alarm tone**—To select the tone for the alarm

**Repeat alarm**—To set the alarm to sound only once or repeatedly on certain days of the week

**Speaking clock**—To let the phone speak the time

**Time settings** See "Time settings," p. 28.

When the alarm sounds, select **Stop** to stop the alarm, or **Snooze** to stop the alarm and set it to ring again in 10 minutes.

If the alarm time is reached while the device is switched off, the device switches itself on and starts sounding the alarm tone. If you select **Stop**, the device asks if you want to activate the device for calls. Select **No** to switch off the device or **Yes** to make and receive calls. Do not select **Yes** when wireless phone use may cause interference or danger.

### ■ Reminders

You can save short text notes with an alarm.

Select **Menu** > **Reminders** and one of the following options:



**Add new**—To add a new reminder

**View all**—To view all the reminders

**Delete**—To delete the reminders

**Alarm tone**—To select the alarm tone for the expiry of the reminder

While viewing the reminder, you may select **Options** > **Delete**, **Edit**, or **Send**.

When the reminder time is reached, select **Quit** to stop the alarm, or **Postp.** to let the phone alarm again in 10 minutes.



## ■ Games

Each game has a brief help text.

To adjust common game settings, select **Menu** > *Games* > *Settings*. You can set the sounds (*Game sounds*) and vibrations (*Shakes*) for the game.



## ■ Extras

### Calculator



**Note:** This calculator has limited accuracy and is designed for simple calculations.

Select **Menu** > *Extras* > *Calculator*.

1. Press keys **0** to **9** to insert digits and **#** to insert a decimal point. To delete the last digit, select **Clear**.  
To change the sign of the entered number, press **\***.
2. Scroll up or down to highlight **+**, **-**, **x**, or **/**.
3. Repeat steps 1 and 2 if necessary.
4. To get the result, select **Equals**.

### Converter

You can convert different measurement units.

In the standby mode, select **Menu** > *Extras* > *Converter*. To access your last five conversions, select *Last 5 conv*. You can also select to use the six predefined unit categories: *Temperature*, *Weight*, *Length*, *Area*, *Volume*, and *Currency*.

You can add your own conversions with *My conversions*.

When doing a conversion, you may scroll up or down to swap the positions of the units in the conversion.

### Speaking clock

See "Clock," p. 32

## Countdown timer

Select **Menu** > **Extras** > **Countd. tim.** Enter the alarm time in the format of hours:minutes, and select **OK**. You can also enter a note for the alarm, change the time, and stop the timer.

When the timer is running,  is shown in the standby mode.


When the alarm time is reached, the phone sounds a tone and flashes the related text. Select **Restart** to restart the timer or **Quit** to stop the alarm.

Leaving the timer running in the background increases the demand on battery power and reduces the battery life.

## Stopwatch

Select **Menu** > **Extras** > **Stopwatch**.

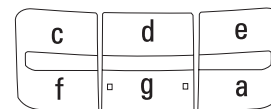
Select **Start** to start timing. To take the time, select **Stop**. When the timing is stopped, you can select **Options** > **Start**, **Reset**, or **Exit**.

To set the timing to continue in the background when it is running, press the end key. While the time is running,  flashes in the standby mode.

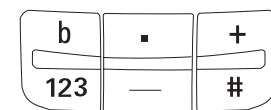
Using the stopwatch or allowing it to run in the background when using other features increases the demand on battery power and reduces the battery life.

## Composer

Select **Menu** > **Extras** > **Composer** and a tone. You can create your own ringing tones by keying in the notes. For example, press 4 for note f.



8 shortens (-) and 9 lengthens (+) the duration of the note or rest. 0 inserts a rest. \* sets the octave. # makes the note sharp (not available for notes e and b). Scroll left or right to move the cursor left or right. Select **Clear** to delete a note or rest to the left of the cursor.



When the tone is complete, select **Options**, and select **Play**, **Save**, **Tempo**, **Send**, **Clear screen** or **Exit**.

## Demo mode

See "Demo mode," p. 14.

## 5. Battery information

---

### ■ Battery information

#### Charging and discharging

Your device is powered by a rechargeable battery. The full performance of a new battery is achieved only after two or three complete charge and discharge cycles. The battery can be charged and discharged hundreds of times but it will eventually wear out. When the talk and standby times are noticeably shorter than normal, replace the battery. Use only Nokia approved batteries, and recharge your battery only with Nokia approved chargers designated for this device.

Unplug the charger from the electrical plug and the device when not in use. Do not leave a fully charged battery connected to a charger, since overcharging may shorten its lifetime. If left unused, a fully charged battery will lose its charge over time.

Use the battery only for its intended purpose. Never use any charger or battery that is damaged.

Do not short-circuit the battery. Accidental short-circuiting can occur when a metallic object such as a coin, clip, or pen causes direct connection of the positive (+) and negative (-) terminals of the battery. (These look like metal strips on the battery.) This might happen, for example, when you carry a spare battery in your pocket or purse. Short-circuiting the terminals may damage the battery or the connecting object.

Leaving the battery in hot or cold places, such as in a closed car in summer or winter conditions, will reduce the capacity and lifetime of the battery and its ability to charge. Always try to keep the battery between 59°F and 77°F (15°C and 25°C). A device with a hot or cold battery may not work temporarily, even when the battery is fully charged. Battery performance is particularly limited in temperatures well below freezing.

Do not dispose of batteries in a fire, as they may explode. Batteries may also explode if damaged. Dispose of batteries according to local regulations. Please recycle when possible. Do not dispose as household waste.

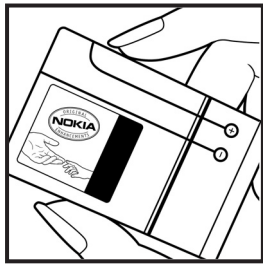
#### Nokia battery authentication guidelines

Always use original Nokia batteries for your safety. To check that you are getting an original Nokia battery, purchase it from an authorized Nokia dealer, look for the Nokia Original Enhancements logo on the packaging, and inspect the hologram label using the following steps:

## Battery information

Successful completion of the four steps is not a total assurance of the authenticity of the battery. If you have any reason to believe that your battery is not an authentic original Nokia battery, you should refrain from using it, and take it to the nearest authorized Nokia service point or dealer for assistance. Your authorized Nokia service point or dealer will inspect the battery for authenticity. If authenticity cannot be verified, return the battery to the place of purchase.

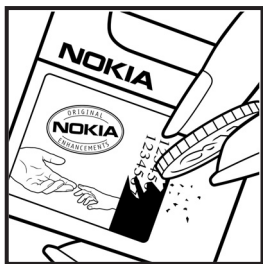
### Authenticate hologram



1. When looking at the hologram on the label, you should see the Nokia connecting hands symbol from one angle and the Nokia Original Enhancements logo when looking from another angle.



2. When you angle the hologram left, right, down, and up, you should see 1, 2, 3, and 4 dots on each side respectively.



3. Scratch the side of the label to reveal a 20-digit code, for example, 12345678919876543210. Turn the battery so that the numbers are facing upwards. The 20-digit code reads starting from the number at the top row followed by the bottom row.

4. Confirm that the 20-digit code is valid by following the instructions at [www.nokia.com/batterycheck](http://www.nokia.com/batterycheck).

### What if your battery is not authentic?

If you cannot confirm that your Nokia battery with the hologram on the label is an authentic Nokia battery, please do not use the battery. Take it to the nearest authorized Nokia service point or dealer for assistance. The use of a battery that is not approved by the manufacturer may be dangerous and may result in poor performance and damage to your device and its enhancements. It may also invalidate any approval or warranty applying to the device.

## Battery information

To find out more about original Nokia batteries, visit [www.nokia.com/battery](http://www.nokia.com/battery).

## 6. Enhancements

---

If you want to enhance device functionality, a range of enhancements is available for you. You can select any of these items to help accommodate your specific communication needs. For availability of these and other enhancements, contact your dealer.



Check the model number of any charger before use with this device. This device is intended for use when supplied with power from an ACP-7 or ACP-12 charger.



**Warning:** Use only batteries, chargers and enhancements approved by Nokia for use with this particular model. The use of any other types may invalidate any approval or warranty, and may be dangerous. For availability of approved enhancements, please check with your dealer.

Your device and its enhancements may contain small parts. Keep them out of reach of small children.

A few practical rules about accessories and enhancements:

- When you disconnect the power cord of any accessory or enhancement, grasp and pull the plug, not the cord.
- Check regularly that enhancements installed in a vehicle are mounted and are operating properly.
- Installation of any complex car enhancements must be made by qualified personnel only.

### ■ Power

- Battery, 900 mAh, Li-ion (BL-5C)
- Charger (ACP-7 or ACP-12)
- Retractable charger (AC-1)
- Mobile charger (LCH-12)

### ■ Audio

- Boom headset (HDB-5)
- Headset (HDC-5)
- Headset (HDE-2)

- TTY adapter (HDA-9)

## ■ Car

- Car kit (CK-10)

## ■ Covers and carrying

- Xpress-on cover

## 7. Reference information

---

### ■ Additional safety information

#### Operating environment

Remember to follow any special regulations in force in any area and always switch off your device when its use is prohibited or when it may cause interference or danger. Use the device only in its normal operating positions.

The RH-64 device meets RF exposure guidelines when used either in the normal use position against the ear or when positioned at least 2.2 centimeters (7/8 inch) away from the body. When a carry case, belt clip, or holder is used for body-worn operation, it should not contain metal and should position the device at least 2.2 centimeters (7/8 inch) away from your body.

The RH-65 device meets RF exposure guidelines when used either in the normal use position against the ear or when positioned at least 1.5 centimeters (5/8 inch) away from the body. When a carry case, belt clip, or holder is used for body-worn operation, it should not contain metal and should position the device at least 1.5 centimeters (5/8 inch) away from your body.

In order to transmit data files or messages, this device requires a quality connection to the network. In some cases, transmission of data files or messages may be delayed until such a connection is available. Ensure the above separation distance instructions are followed until the transmission is completed.

Parts of the device are magnetic. Metallic materials may be attracted to the device, and persons with a hearing aid should not hold the device to the ear with the hearing aid. Do not place credit cards or other magnetic storage media near the device, because information stored on them may be erased.

Your device and its enhancements may contain small parts. Keep them out of reach of small children.

#### Medical devices

Operation of any radio transmitting equipment, including wireless devices, may interfere with the functionality of inadequately protected medical devices. Consult a physician or the manufacturer of the medical device to determine if they are adequately shielded from external RF energy or if you have any questions. Switch off your device in health care facilities when any regulations posted in these areas



instruct you to do so. Hospitals or health care facilities may be using equipment that could be sensitive to external RF energy.

## **Pacemakers**

Pacemaker manufacturers recommend that a minimum separation of 15.3 centimeters (6 inches) be maintained between a wireless device and a pacemaker to avoid potential interference with the pacemaker. These recommendations are consistent with the independent research by and recommendations of Wireless Technology Research. To minimize the potential for interference, persons with pacemakers should

- Always keep the device more than 15.3 centimeters (6 inches) from their pacemaker when the device is switched on
- Not carry the device in a breast pocket
- Hold the device to the ear opposite the pacemaker to minimize the potential for interference.

If you suspect interference, switch off your device, and move the device away.

## **Hearing aids**

Some digital wireless devices may interfere with some hearing aids. If interference occurs, consult your hearing aid provider.

## **Vehicles**

RF signals may affect improperly installed or inadequately shielded electronic systems in motor vehicles such as electronic fuel injection systems, electronic antiskid (antilock) braking systems, electronic speed control systems, air bag systems. For more information, check with the manufacturer or its representative of your vehicle or any equipment that has been added.

Only qualified personnel should service the device, or install the device in a vehicle. Faulty installation or service may be dangerous and may invalidate any warranty that may apply to the device. Check regularly that all wireless device equipment in your vehicle is mounted and operating properly. Do not store or carry flammable liquids, gases, or explosive materials in the same compartment as the device, its parts, or enhancements. For vehicles equipped with an air bag, remember that air bags inflate with great force. Do not place objects, including installed or portable wireless equipment in the area over the air bag or in the air bag deployment area. If in-vehicle wireless equipment is improperly installed and the air bag inflates, serious injury could result.

## Reference information

Using your device while flying in aircraft is prohibited. Switch off your device before boarding an aircraft. The use of wireless teledevices in an aircraft may be dangerous to the operation of the aircraft, disrupt the wireless telephone network, and may be illegal.

## Potentially explosive environments

Switch off your device when in any area with a potentially explosive atmosphere and obey all signs and instructions. Potentially explosive atmospheres include areas where you would normally be advised to turn off your vehicle engine. Sparks in such areas could cause an explosion or fire resulting in bodily injury or even death. Switch off the device at refueling points such as near gas pumps at service stations. Observe restrictions on the use of radio equipment in fuel depots, storage, and distribution areas, chemical plants or where blasting operations are in progress. Areas with a potentially explosive atmosphere are often but not always clearly marked. They include below deck on boats, chemical transfer or storage facilities, vehicles using liquefied petroleum gas (such as propane or butane), and areas where the air contains chemicals or particles such as grain, dust or metal powders.

## ■ Emergency calls



**Important:** Wireless devices, including this device, operate using radio signals, wireless networks, landline networks, and user-programmed functions. Because of this, connections in all conditions cannot be guaranteed. You should never rely solely on any wireless device for essential communications like medical emergencies.

To make an emergency call, do the following:

1. If the device is not on, switch it on. Check for adequate signal strength. Some networks may require that a valid SIM card is properly inserted in the device.
2. Press the end key as many times as needed to clear the display and ready the device for calls.
3. Enter the official emergency number for your present location. Emergency numbers vary by location.
4. Press the call key.

If certain features are in use, you may first need to turn those features off before you can make an emergency call. Consult this guide or your service provider. When making an emergency call, give all the necessary information as accurately as possible. Your wireless device may be the only means of communication at the scene of an accident. Do not end the call until given permission to do so.

## ■ Certification information (SAR)

THIS MOBILE DEVICE MEETS GUIDELINES FOR EXPOSURE TO RADIO WAVES.

Your mobile device is a radio transmitter and receiver. It is designed not to exceed the limits for exposure to radio waves recommended by international guidelines. These guidelines were developed by the independent scientific organization ICNIRP and include safety margins designed to assure the protection of all persons, regardless of age and health.

The exposure guidelines for mobile devices employ a unit of measurement known as the Specific Absorption Rate or SAR. The SAR limit stated in the ICNIRP guidelines is 2.0 watts/kilogram (W/kg) averaged over 10 grams of tissue. Tests for SAR are conducted using standard operating positions with the device transmitting at its highest certified power level in all tested frequency bands. The actual SAR level of an operating device can be below the maximum value because the device is designed to use only the power required to reach the network. That amount changes depending on a number of factors such as how close you are to a network base station. The highest SAR value according to international testing procedures for use at the ear for device type RH-64 is 0.82 W/kg, and the highest SAR value according to international testing procedures for use at the ear for device type RH-65 is 0.80 W/kg.

Use of device accessories and enhancements may result in different SAR values. SAR values may vary depending on national reporting and testing requirements and the network band. Additional SAR information may be provided under product information at [www.nokia.com](http://www.nokia.com).

Your mobile device is also designed to meet the requirements for exposure to radio waves established by the Federal Communications Commission (USA) and Industry Canada. These requirements set a SAR limit of 1.6 W/kg averaged over 1 gram of tissue. The highest SAR value reported under this standard during product certification for use at the ear for device type RH-65 is 1.12 W/kg and when properly worn on the body is 1.08 W/kg. Information about this device can be found on the FCC's website at <http://www.fcc.gov/oet/fccid> by searching the equipment authorization system using FCC ID: QTLRH-65.

## ■ Technical information

Feature	Specification
<b>Weight</b>	80 g (2.8 oz) with BL-5C Li-Ion 900 mAh battery
<b>Size</b>	Volume: 69 cm <sup>3</sup> (4.2 in <sup>3</sup> ) Length: 103.8 mm (4.1 in) Width: 43.8 mm (1.7 in) Thickness: 17 mm (0.7 in)
<b>Frequency range</b>	GSM 850 824–894 MHz (TX) 869–894 MHz (RX) GSM 1900 1850–1910 MHz (TX) 1930–1990 MHz (RX) GSM 900 880–915 MHz (TX) 925–960 MHz (RX) GSM 1800 1710–1785 MHz (TX) 1805–1865 MHz (RX)
<b>Transmitter output power</b>	Up to 2 W
<b>Battery voltage</b>	3.7 V dc
<b>Number of channels</b>	299
<b>Memory size</b>	Up to 4 MB flash memory Up to 4.6 MB shared memory
<b>Operating temperature</b>	59°F to + 77°F (15°C to + 25°C)

## Care and maintenance

---

Your device is a product of superior design and craftsmanship and should be treated with care. The suggestions below will help you protect your warranty coverage.

- Keep the device dry. Precipitation, humidity and all types of liquids or moisture can contain minerals that will corrode electronic circuits. If your device does get wet, remove the battery and allow the device to dry completely before replacing it.
- Do not use or store the device in dusty, dirty areas. Its moving parts and electronic components can be damaged.
- Do not store the device in hot areas. High temperatures can shorten the life of electronic devices, damage batteries, and warp or melt certain plastics.
- Do not store the device in cold areas. When the device returns to its normal temperature, moisture can form inside the device and damage electronic circuit boards.
- Do not attempt to open the device other than as instructed in this guide.
- Do not drop, knock, or shake the device. Rough handling can break internal circuit boards and fine mechanics.
- Do not use harsh chemicals, cleaning solvents, or strong detergents to clean the device.
- Do not paint the device. Paint can clog the moving parts and prevent proper operation.
- Use only the supplied or an approved replacement antenna. Unauthorized antennas, modifications, or attachments could damage the device and may violate regulations governing radio devices.
- Use chargers indoors.
- Always create a backup of data you want to keep (such as contacts and calendar notes) before sending your device to a service facility.

All of the above suggestions apply equally to your device, battery, charger, or any enhancement. If any device is not working properly, take it to the nearest authorized service facility for service.

# Index

---

## A

access codes 10

## B

battery  
  authentication 35  
  charge 12, 35  
  charge indicator 11  
  information 35  
  insert 11

## C

calculator 33  
call  
  1-touch dial 16  
  answer 17  
  conference 16  
  dial 16  
  redial 16  
  settings 28  
call key 11  
call log 25  
  call timer 26  
  recent call lists 26  
chat 21  
clock 32  
composer 34  
contacts 24  
  find names 24  
  settings 25  
converter 33  
countdown timer 34

## D

demo mode 14  
display  
  indicators 11  
  settings 27

## E

end key 11  
enhancements 38

## G

games 33

## K

keypad, lock or unlock 15

## L

lock the keypad 15  
loudspeaker 17

## M

memory  
  phone or SIM card 25  
  shared 10  
  status 25  
message  
  chat 21  
  counter 23, 26  
  create 20  
  delete 22  
  draft 21  
  picture 22  
  read 21  
  screen 22  
  settings 23

## N

network services 8

## P

phone settings 29  
predictive text 18  
profiles 28

## S

scroll key 11  
security access code 10  
selection keys 11  
settings  
  call 28

## Index

- contacts 25
- cost 30
- display 27
- enhancements 30
- message 23
- phone 29
- profiles 28
- restore factory defaults 32
- right navigation key 31
- security 30
- time 28
- tone 26
- shared memory 10
- SIM card
  - block 10
  - insert 11
  - memory 24, 25
- standby mode 11, 14
- stopwatch 34

## T

- text, predictive or traditional 18
- time settings 28

## U

- unlock the keypad 15

## V

- voice messages 17

## W

- write text 18