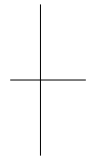
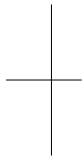
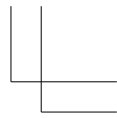
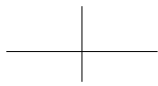
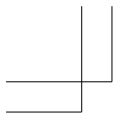


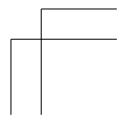
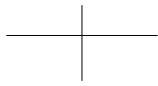
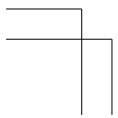
# Quick Guide

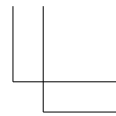
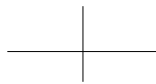
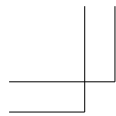
Nokia X2



Issue 1 EN


RM-1014





### Psst...

This guide isn't all there is...

There's a user guide in your phone – it's always with you, available when needed. On the start screen, swipe left, and tap .

For the online user guide, even more info, and troubleshooting help, go to [www.nokia.com/support](http://www.nokia.com/support).

The instructions in this user guide are based on the latest available software version. If your device has not been updated to the latest available software, there may be differences in the availability and functionality of some features.

For info about writing text on your phone, see the user guide in your phone or the online user guide.

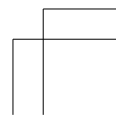
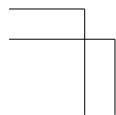
For info on Microsoft Mobile Service terms and Privacy policy, go to [www.nokia.com/privacy](http://www.nokia.com/privacy).

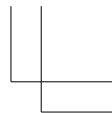
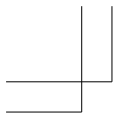


### Contents

<b>For your safety</b>	<b>3</b>
<b>Keys and parts</b>	<b>5</b>
<b>Insert the SIM card, battery, and memory card</b>	<b>7</b>
<b>Charge the battery</b>	<b>9</b>

## 2





<b>Copy contacts from your old phone</b>	<b>10</b>
<b>Switch between views</b>	<b>11</b>
<b>Take better photos with Smart mode</b>	<b>12</b>
<b>Update your phone software</b>	<b>13</b>
<b>Find your model number and serial number (IMEI)</b>	<b>14</b>
<b>Product and safety information</b>	<b>15</b>



### For your safety

Read these simple guidelines. Not following them may be dangerous or illegal. For further info, read the complete user guide.



#### SWITCH OFF IN RESTRICTED AREAS

Switch the device off when mobile phone use is not allowed or when it may cause interference or danger, for example, in aircraft, in hospitals or near medical equipment, fuel, chemicals, or blasting areas. Obey all instructions in restricted areas.



#### ROAD SAFETY COMES FIRST

Obey all local laws. Always keep your hands free to operate the vehicle while driving. Your first consideration while driving should be road safety.



#### INTERFERENCE

All wireless devices may be susceptible to interference, which could affect performance.



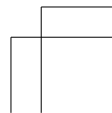
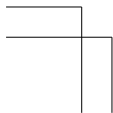
#### QUALIFIED SERVICE

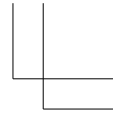
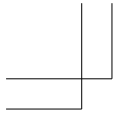
Only qualified personnel may install or repair this product.



#### BATTERIES, CHARGERS, AND OTHER ACCESSORIES

Use only batteries, chargers, and other accessories approved by Microsoft Mobile for use with this device. Do not connect incompatible products.



**KEEP YOUR DEVICE DRY**

Your device is not water-resistant. Keep it dry.

**GLASS PARTS**

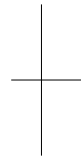
The device screen is made of glass. This glass can break if the device is dropped on a hard surface or receives a substantial impact. If the glass breaks, do not touch the glass parts of the device or attempt to remove the broken glass from the device. Stop using the device until the glass is replaced by qualified service personnel.

**PROTECT YOUR HEARING**

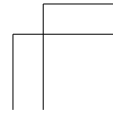
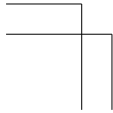
To prevent possible hearing damage, do not listen at high volume levels for long periods. Exercise caution when holding your device near your ear while the loudspeaker is in use.

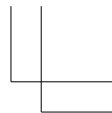
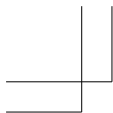
**SAR**

This device meets RF exposure guidelines when used either in the normal use position against the ear or when positioned at least 1.5 centimetres (5/8 inch) away from the body. The specific maximum SAR values can be found in the Certification Information (SAR) section of this user guide. For more info, go to [www.sar-tick.com](http://www.sar-tick.com).



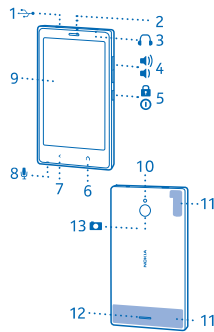
When a carry case, belt clip or other form of device holder is used for body-worn operation, it should not contain metal and should provide at least the above-stated separation distance from the body. Note that mobile devices may be transmitting even if you are not making a voice call.



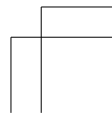
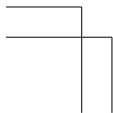


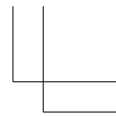
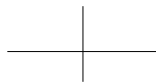
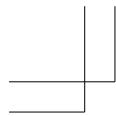
### Keys and parts

Explore the keys and parts of your new phone.



- 1 Micro-USB connector
- 2 Earpiece
- 3 Audio connector (3.5 mm AHJ)
- 4 Volume keys
- 5 Lock/Power key
- 6 Home key
- 7 Back key
- 8 Microphone
- 9 Touch screen



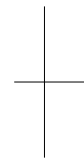


- 10 Camera flash
- 11 Antenna area
- 12 Loudspeaker
- 13 Camera lens. Before using the camera, remove the protective tape from the lens.

Avoid touching the antenna area while the antenna is in use. Contact with antennas affects the communication quality and may reduce battery life due to higher power level during operation.



Do not connect products that create an output signal, as this may damage the device. Do not connect any voltage source to the audio connector. If you connect an external device or headset, other than those approved for use with this device, to the audio connector, pay special attention to volume levels.

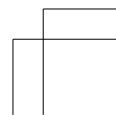
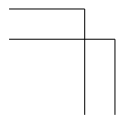


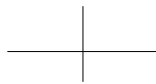
Some of the accessories mentioned in this user guide, such as charger, headset, or data cable, may be sold separately.

Parts of the device are magnetic. Metallic materials may be attracted to the device. Do not place credit cards or other magnetic storage media near the device, because info stored on them may be erased.

Keep a safe distance when using the flash. Do not use the flash on people or animals at close range. Do not cover the flash while taking a photo.

## 6



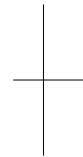


## Insert the SIM card, battery, and memory card

Learn how to get your phone ready.

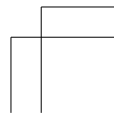
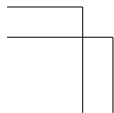
**!** **Important:** Your device uses a micro-SIM card, also known as a mini-UICC SIM card. Use of incompatible SIM cards, or use of SIM card adapters, may damage the card or the device, and may corrupt data stored on the card.

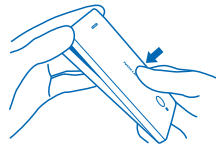
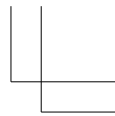
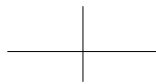
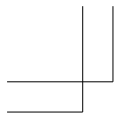
Use only compatible memory cards approved for use with this device. Incompatible cards may damage the card and the device and corrupt data stored on the card.



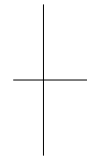
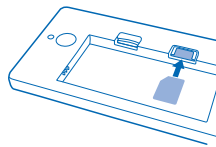
**!** **Note:** Switch the device off and disconnect the charger and any other device before removing any covers. Avoid touching electronic components while changing any covers. Always store and use the device with any covers attached.

**1.** Hold your phone by the bottom corners in one hand, and with the thumb of your other hand, press the back cover, and remove it.

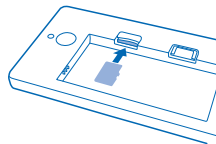




2. If the battery is in the phone, lift it out.
3. Push the SIM into the SIM1 slot, contact area face down.

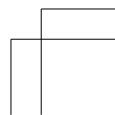
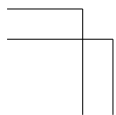


- To remove the SIM, pull the card out.
4. Push the memory card into the memory card slot with the contact area face down.

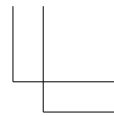
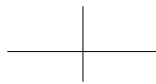
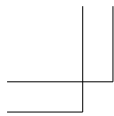


To remove the memory card, pull it out.

**8**







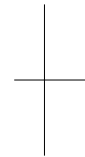
**!** **Important:** Do not remove the memory card when an app is using it. Doing so may damage the memory card and the device and corrupt data stored on the card.

5. Line up the battery contacts, and put the battery in.

6. Replace the back cover.

7. To switch on, press and hold the power key.

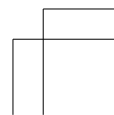
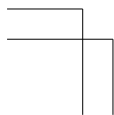
Your device has a maximum charging voltage of 4.35V. Use only batteries designed for a 4.35V charging voltage and approved by Microsoft Mobile. You can confirm the proper battery charging voltage from the battery label. Make sure that the battery has a maximum charging voltage of 4.35V, and/or a nominal charging voltage of 3.8V.

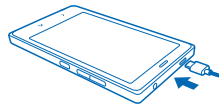


### Charge the battery

Your battery has been partially charged at the factory, but you may need to recharge it before you can use your phone.

1. Plug the charger into a wall outlet.
2. Connect the charger to the phone. When done, unplug the charger from the phone, then from the wall outlet.





If the battery is completely discharged, it may take several minutes before the charging indicator is displayed or before any calls can be made.


★ **Tip:** You can use USB charging when a wall outlet is not available. Data can be transferred while charging the device. The efficiency of USB charging power varies significantly, and it may take a long time for charging to start and the device to start functioning.

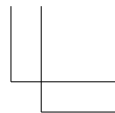
Make sure your computer is switched on.

### Copy contacts from your old phone

Easily get your contacts to your new phone.

To copy contacts from your old phone using your SIM card, you must have copied them from your old phone to the SIM and placed the SIM in your new phone.

1. On the start screen, swipe left, and tap .
2. Swipe up from the bottom of the screen, and tap **Import/export** > **Import from SIM**.



★ **Tip:** To copy contacts from a memory card, tap **Import/export** > **Import from storage**.

3. Select the account where you want to import the contacts.

4. Tap the contacts you want to import, or, to import all contacts, swipe up from the bottom of the screen, and tap **All**.

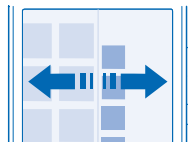
★ **Tip:** You can also use the **Contacts Transfer** app to get your contacts. On the start screen, swipe left, and tap **Contacts Transfer**.



### Switch between views

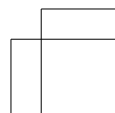
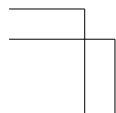
Your phone has 3 home screens: Fastlane, start screen, and apps menu.

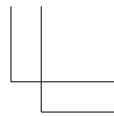
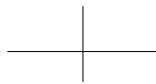
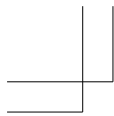
On the start screen, swipe right to go to Fastlane, or left to go to the apps menu.



Choose your view according to your needs:

- On Fastlane, you can easily see what you've been doing lately and check what's happening next in your calendar.





- On the start screen, you can open apps and widgets and rearrange them as you like.
- In the apps menu, you can see all your apps in alphabetical order and search your phone and the internet.

★ **Tip:** In any app, press the home key to get back to the home screen you were last in.

#### Switch between apps





Press and hold the back key, swipe to the app you want, and tap the app.

★ **Tip:** To close an app, tap .



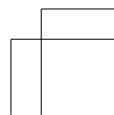
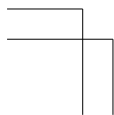
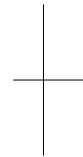
#### Take better photos with Smart mode

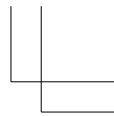
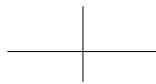
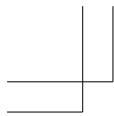
Want to take great photos of moving objects? Use Smart mode to convert photos of moving objects into a single dynamic photo.

1. To switch the camera on, tap .
2. To switch to Smart mode, with the phone in the landscape view, drag  left, and tap .
3. To take the photo, tap .


★ **Tip:** You don't need to follow the moving object when taking the photo. Just keep the camera still.

The camera takes a sequence of photos. To see the photos, swipe up.





### Select the best photo

After taking the photo, tap **Best photo**. The camera has selected the best photo. To select another one, tap the dots at the bottom of the screen. To save a photo, tap .

### Update your phone software

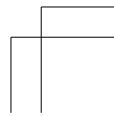
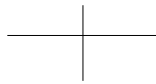
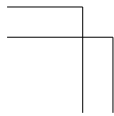
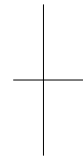
Stay in step with the beat – update your phone software and apps to get new and enhanced features for your phone.

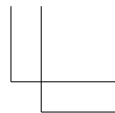
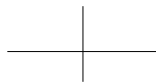
You don't need a computer and a cable to update your phone software. Just download and install the update using your phone. Updates are free of charge, but to download the update, you need an internet connection. For info on data costs, contact your network service provider.

1. When your phone notifies you of an update, swipe down from the top left of the screen, and tap the update notification.
2. To download and install an update, tap **Update**, and follow the instructions shown on the phone.

★ **Tip:** Use a Wi-Fi connection to avoid mobile data transmission costs.

The update may take several minutes. If you encounter problems, contact your network service provider.





After the update, go to [www.nokia.com/support](http://www.nokia.com/support) to get your new user guide.


Your network service provider may send updates over the air directly to your phone. For more info on this service, contact your network service provider.

Using services or downloading content, including free items, may cause the transfer of large amounts of data, which may result in data costs.



Before starting the update, connect a charger or make sure the device battery has enough power.

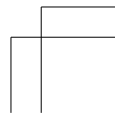
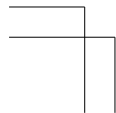
**⚠ Warning:** If you install a software update, you cannot use the device, even to make emergency calls, until the installation is completed and the device is restarted.

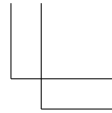
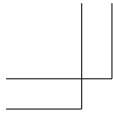
#### Check for updates manually

On the start screen, swipe left, and tap  > **About phone** > **Phone updates** > **Check**.

#### Find your model number and serial number (IMEI)

If you need to contact Nokia Care or your service provider, you may need info such as the model number and the serial number (IMEI). To see the model number, tap  > **About phone**. To see the serial number, tap  > **About phone** > **Status** > **Subscriptions**. You can also find the info on your phone label, which is located under the battery.





## Product and safety information

### Network services and costs

You can only use your device on the GSM 850, 900, 1800, 1900; and WCDMA 850, 900, 1900, 2100 MHz networks. You need a subscription with a service provider.



Using some features and downloading content require a network connection and may result in data costs. You may also need to subscribe to some features.


### Emergency calls


1. Make sure the device is switched on.
2. Check for adequate signal strength.

You may also need to do the following:

- Put a SIM card in the device, if supported by your device.
- Switch the call restrictions off in your device, such as call barring, fixed dialling, or closed user group.
- Make sure the flight profile is not activated.
- If the device screen and/or keys are locked, unlock them.

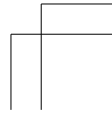
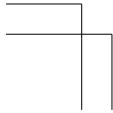
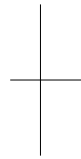
3. Press the home key repeatedly until the home screen is shown.
4. To open the dialler, select .
5. Type in the official emergency number for your present location. Emergency call numbers vary by location.
6. Select .
7. Give the necessary info as accurately as possible. Do not end the call until given permission to do so.

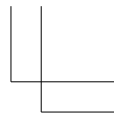
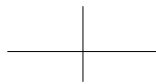
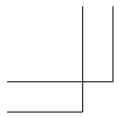
To make an emergency call during the first start-up, tap .

 **Important:** Activate both cellular and internet calls, if your phone supports internet calls. The phone may attempt to make emergency calls both through cellular networks and through your internet call service provider. Connections in all conditions cannot be guaranteed. Never rely solely on any wireless phone for essential communications like medical emergencies.

### Take care of your device

See the in-device user guide for important instructions on how to take care of your device.





### Crossed-out wheeled-bin symbol



The crossed-out wheeled-bin symbol on your product, battery, literature, or packaging reminds you that all electrical and electronic products and batteries must be taken to separate collection at the end of their working life. Do not dispose of these products as unsorted municipal waste: take them for recycling. For info on your nearest recycling point, go to [www.nokia.com/support](http://www.nokia.com/support). For more info on the environmental attributes of your device, see [www.nokia.com/ecoprofile](http://www.nokia.com/ecoprofile).

### Battery and charger info

Use your device only with an original BV-5S rechargeable battery. Charge your device with AC-20 charger. Charger plug type may vary. Microsoft Mobile may make additional battery or charger models available for this device.

### Battery and charger safety

Always switch the device off and unplug the charger before removing the battery. To unplug a charger or an accessory, hold and pull the plug, not the cord.

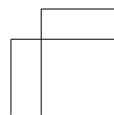
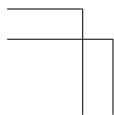
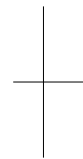
When your charger is not in use, unplug it. If left unused, a fully charged battery will lose its charge over time.

Always keep the battery between 15°C and 25°C (59°F and 77°F) for optimal performance. Extreme temperatures reduce the capacity and lifetime of the battery. A device with a hot or cold battery may not work temporarily.

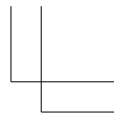
Accidental short-circuiting can happen when a metallic object touches the metal strips on the battery. This may damage the battery or the other object.

Do not dispose of batteries in a fire as they may explode. Obey local regulations. Recycle when possible. Do not dispose as household waste.

Do not dismantle, cut, crush, bend, puncture, or otherwise damage the battery in any way. If a battery leaks, do not let liquid touch skin or eyes. If this happens, immediately flush the affected areas with water, or seek medical help. Do not modify, attempt to insert foreign objects into the battery, or immerse or expose it to water or other liquids. Batteries may explode if damaged.







Use the battery and charger for their intended purposes only. Improper use, or use of unapproved or incompatible batteries or chargers may present a risk of fire, explosion, or other hazard, and may invalidate any approval or warranty. If you believe the battery or charger is damaged, take it to a service centre before continuing to use it. Never use a damaged battery or charger. Do not charge your device during a lightning storm. Only use the charger indoors.

#### Small children

Your device and its accessories are not toys. They may contain small parts. Keep them out of the reach of small children.

#### Medical devices

Operation of radio transmitting equipment, including wireless phones, may interfere with inadequately shielded medical devices' function. Consult a physician or the medical device's manufacturer to determine if it is adequately shielded from external radio energy.

#### Implanted medical devices

To avoid potential interference, manufacturers of implanted medical devices recommend a minimum separation of 15.3 centimetres (6 inches) between a wireless device and the medical device. Persons who have such devices should:

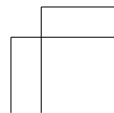
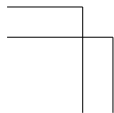
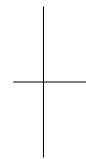
- Always keep the wireless device more than 15.3 centimetres (6 inches) from the medical device.
- Not carry the wireless device in a breast pocket.
- Hold the wireless device to the ear opposite the medical device.
- Switch the wireless device off if there is any reason to suspect that interference is taking place.
- Follow the manufacturer directions for the implanted medical device.

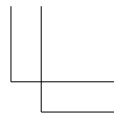
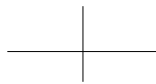
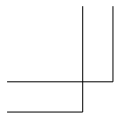
If you have any questions about using your wireless device with an implanted medical device, consult your health care provider.

#### Hearing

**Warning:** When you use the headset, your ability to hear outside sounds may be affected. Do not use the headset where it can endanger your safety.

Some wireless devices may interfere with some hearing aids.





### Nickel

The surface of this device is nickel-free.

### Vehicles

Radio signals may affect improperly installed or inadequately shielded electronic systems in vehicles. For more info, check with the manufacturer of your vehicle or its equipment. Only qualified personnel should install the device in a vehicle. Faulty installation may be dangerous and invalidate your warranty. Check regularly that all wireless device equipment in your vehicle is mounted and operating properly. Do not store or carry flammable or explosive materials in the same compartment as the device, its parts, or accessories. Do not place your device or accessories in the air bag deployment area.



### Potentially explosive environments

Switch your device off in potentially explosive environments, such as near petrol pumps. Sparks may cause an explosion or fire resulting in injury or death. Note restrictions in areas with fuel; chemical plants; or where blasting operations are in progress. Areas with a potentially explosive environment may not be clearly marked. These usually are areas where you are advised to switch your engine off, below deck on boats, chemical transfer or storage facilities, and where the air contains chemicals or particles. Check with the manufacturers of vehicles using liquefied petroleum gas (such as propane or butane) if this device can be safely used in their vicinity.

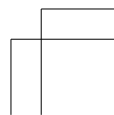
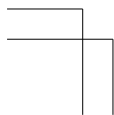


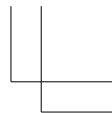
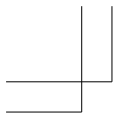
### Certification information (SAR)

**This mobile device meets international guidelines for exposure to radio waves.**

Your mobile device is a radio transmitter and receiver. It is designed not to exceed the limits for exposure to radio waves (radio frequency electromagnetic fields), recommended by international guidelines from the independent scientific organization ICNIRP. These guidelines incorporate substantial safety margins that are intended to assure the protection of all persons regardless of age and health. The exposure guidelines are based on the Specific Absorption Rate (SAR), which is an expression of the amount of radio frequency (RF) power deposited in the head or body when the device is transmitting. The ICNIRP SAR limit for mobile devices is 2.0 W/kg averaged over 10 grams of tissue.

18





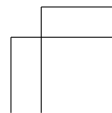
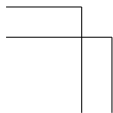
SAR tests are carried out with the device in standard operating positions, transmitting at its highest certified power level, in all its frequency bands. The maximum recorded SAR values for this device are:

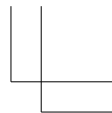
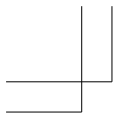
	Maximum SAR value	Frequency bands used when Maximum SAR value was recorded
When held against the head	0.81 W/kg over 10g	WCDMA2100+WLAN2450
When operated at a separation distance of 1.5 centimetres (5/8 inch) from the body	0.78 W/kg over 10g	WCDMA900+WLAN2450



This device meets RF exposure guidelines when used against the head or when positioned at least 1.5 centimetres (5/8 inch) away from the body. When a carry case, belt clip or other form of device holder is used for body-worn operation, it should not contain metal and should provide at least the above stated separation distance from the body. To send data or messages, a good connection to the network is needed. Sending may be delayed until such a connection is available. Follow the separation distance instructions until the sending is finished.

During general use, the SAR values are usually well below the values stated above. This is because, for purposes of system efficiency and to minimise interference on the network, the operating power of your mobile is automatically decreased when full power is not needed for the call. The lower the power output, the lower the SAR value. Device models may have different versions and more than one value. Component and design changes may occur over time and some changes could affect SAR values. The latest available SAR information for this and other Nokia device models can be found at [www.nokia.com/sar](http://www.nokia.com/sar).





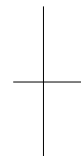
The World Health Organization (WHO) has stated that current scientific information does not indicate the need for any special precautions when using mobile devices. If you are interested in reducing your exposure, they recommend you limit your usage or use a hands-free kit to keep the device away from your head and body. For more information and explanations and discussions on RF exposure, go to the WHO website at [www.who.int/peh-emf/en](http://www.who.int/peh-emf/en).

**Copyrights and other notices**

**DECLARATION OF CONFORMITY**

**CE 0168**

Hereby, Microsoft Mobile Oy declares that this RM-1014 product is in compliance with the essential requirements and other relevant provisions of Directive 1999/5/EC. A copy of the Declaration of Conformity can be found at [www.nokia.com/global/declaration/declaration-of-conformity](http://www.nokia.com/global/declaration/declaration-of-conformity).

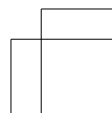
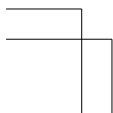


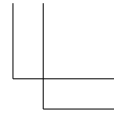
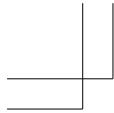
The availability of products, features, apps and services may vary by region. Microsoft Mobile may, in its sole discretion, change, correct or discontinue any of its services in whole or in part. For more info, contact your dealer or your service provider. This device may contain commodities, technology or software subject to export laws and regulations from the US and other countries. Diversion contrary to law is prohibited.

The contents of this document are provided "as is". Except as required by applicable law, no warranties of any kind, either express or implied, including, but not limited to, the implied warranties of merchantability and fitness for a particular purpose, are made in relation to the accuracy, reliability or contents of this document. Microsoft Mobile reserves the right to revise this document or withdraw it at any time without prior notice.

To the maximum extent permitted by applicable law, under no circumstances shall Microsoft Mobile or any of its licensors be responsible for any loss of data or income or any special, incidental, consequential or indirect damages howsoever caused.

Reproduction, transfer or distribution of part or all of the contents in this document in any form without the prior written permission of Microsoft Mobile is prohibited. Microsoft Mobile operates a policy of continuous development. Microsoft Mobile reserves the right to make





changes and improvements to any of the products described in this document without prior notice.  
 Downloading of maps, games, music and videos and uploading of images and videos may involve transferring large amounts of data. Your service provider may charge for the data transmission. The availability of particular products, services and features may vary by region. Please check with your local dealer for further details and availability of language options.

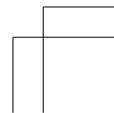
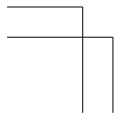
**FCC NOTICE**

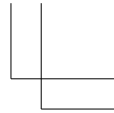
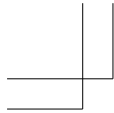
This device complies with part 15 of the FCC rules. Operation is subject to the following two conditions: (1) This device may not cause harmful interference, and (2) this device must accept any interference received, including interference that may cause undesired operation. For more info, go to [transition.fcc.gov/oet/rfsafety/ef-faqs.html](http://transition.fcc.gov/oet/rfsafety/ef-faqs.html). Any changes or modifications not expressly approved by Microsoft Mobile could void the user's authority to operate this equipment.

Note: This equipment has been tested and found to comply with the limits for a Class B digital device, pursuant to part 15 of the FCC Rules. These limits are designed to provide reasonable protection against harmful interference in a residential installation. This equipment generates, uses and can radiate radio frequency energy and, if not installed and used in accordance with the instructions, may cause harmful interference to radio communications. However, there is no guarantee that interference will not occur in a particular installation. If this equipment does cause harmful interference to radio or television reception, which can be determined by turning the equipment off and on, the user is encouraged to try to correct the interference by one or more of the following measures:

- Reorient or relocate the receiving antenna.
- Increase the separation between the equipment and receiver.
- Connect the equipment into an outlet on a circuit different from that to which the receiver is connected.
- Consult the dealer or an experienced radio/TV technician for help.

TM & © 2014 Microsoft Mobile. All rights reserved. Nokia is a TM of Nokia Corporation. Third party products/names may be TMs of their respective owners.  
 The Bluetooth word mark and logos are owned by the Bluetooth SIG, Inc. and any use of such marks by Microsoft Mobile is under license. This product is licensed under the MPEG-4 Visual Patent Portfolio License (i) for personal and noncommercial use in connection with





information which has been encoded in compliance with the MPEG-4 Visual Standard by a consumer engaged in a personal and noncommercial activity and (ii) for use in connection with MPEG-4 video provided by a licensed video provider. No license is granted or shall be implied for any other use. Additional information, including that related to promotional, internal, and commercial uses, may be obtained from MPEG LA, LLC. See [www.mpegla.com](http://www.mpegla.com).

**Manufacturer and warranty info**

Microsoft Mobile Oy (Ltd) has purchased the devices and services business from Nokia. The manufacturer of this product is Microsoft Mobile Oy (Ltd) or any of its affiliates, even if "Nokia Corporation" or any of its affiliates may still be visible in the sales package, documentation, or the product itself.

Microsoft Mobile Oy (Ltd) provides the Manufacturer's Limited Warranty ("Warranty") for this product in accordance with the terms and conditions described in the "Manufacturer's Limited Warranty" document included in the sales package. Microsoft Mobile Oy (Ltd) shall assume and be responsible for all rights and obligations related to your Warranty.

Microsoft Mobile Oy (Ltd), Keilalahdentie 2-4, FIN-02150 Espoo, Finland

However, in the following countries, the specified local affiliates, which have been purchased by Microsoft Mobile Oy (Ltd), continue to provide the Warranty as defined in the Warranty text included in the sales package:

- People's Republic of China: Nokia Telecommunications Co., Ltd.
- USA: Nokia Inc
- Canada: Nokia Products Limited
- Mexico: Nokia México, S.A. de C.V
- Russia: Nokia LLC
- Brazil: Nokia do Brasil Tecnologia Ltda
- Turkey: Nokia Komünikasyon A.Ş.

