

Nokia 5700 XpressMusic User Guide

DRAFT

DECLARATION OF CONFORMITY

Hereby, NOKIA CORPORATION declares that this RM-302 product is in compliance with the essential requirements and other relevant provisions of Directive 1999/5/EC. A copy of the Declaration of Conformity can be found at http://www.nokia.com/phones/declaration_of_conformity/

CE 0434

© 2007 Nokia. All rights reserved.

Nokia, Nokia Connecting People, Nokia Care, Navi, and Visual Radio are trademarks or registered trademarks of Nokia Corporation. Nokia tune and Visual Radio are sound marks of Nokia Corporation. Other product and company names mentioned herein may be trademarks or tradenames of their respective owners.

Reproduction, transfer, distribution, or storage of part or all of the contents in this document in any form without the prior written permission of Nokia is prohibited.

symbian This product includes software licensed from Symbian Software Ltd © 1998-2007. Symbian and Symbian OS are trademarks of Symbian Ltd.

US Patent No 5818437 and other pending patents. T9 text input software Copyright (C) 1997-2007. Tegic Communications, Inc. All rights reserved.



Java™ and all Java-based marks are trademarks or registered trademarks of Sun Microsystems, Inc.

This product is licensed under the MPEG-4 Visual Patent Portfolio License (i) for personal and noncommercial use in connection with information which has been encoded in compliance with the MPEG-4 Visual Standard by a consumer engaged in a personal and noncommercial activity and (ii) for use in connection with MPEG-4 video provided by a licensed video provider. No license is granted or shall be implied for any other use. Additional information, including that related to promotional, internal, and commercial uses, may be obtained from MPEG LA, LLC. See <<http://www.mpegla.com>>.

Nokia operates a policy of ongoing development. Nokia reserves the right to make changes and improvements to any of the products described in this document without prior notice.

TO THE MAXIMUM EXTENT PERMITTED BY APPLICABLE LAW, UNDER NO CIRCUMSTANCES SHALL NOKIA OR ANY OF ITS LICENSORS BE RESPONSIBLE FOR ANY LOSS OF DATA OR INCOME OR ANY SPECIAL, INCIDENTAL, CONSEQUENTIAL OR INDIRECT DAMAGES HOWSOEVER CAUSED.

THE CONTENTS OF THIS DOCUMENT ARE PROVIDED "AS IS". EXCEPT AS REQUIRED BY APPLICABLE LAW, NO WARRANTIES OF ANY KIND, EITHER EXPRESS OR IMPLIED, INCLUDING, BUT NOT LIMITED TO, THE IMPLIED WARRANTIES OF MERCHANTABILITY AND FITNESS FOR A PARTICULAR PURPOSE, ARE MADE IN RELATION TO THE ACCURACY, RELIABILITY OR CONTENTS OF THIS DOCUMENT. NOKIA RESERVES THE RIGHT TO REVISE THIS DOCUMENT OR WITHDRAW IT AT ANY TIME WITHOUT PRIOR NOTICE.

The availability of particular products and applications for these products may vary by region. Please check with your Nokia dealer for details, and availability of language options.

This device complies with Directive 2002/95/EC on the restriction of the use of certain hazardous substances in electrical and electronic equipment.

Export controls

This device may contain commodities, technology or software subject to export laws and regulations from the US and other countries. Diversion contrary to law is prohibited.

NO WARRANTY

The third-party applications provided with your device may have been created and may be owned by persons or entities not affiliated with or related to Nokia. Nokia does not own the copyrights or intellectual property rights to the third-party applications. As such, Nokia does not take any responsibility for end-user support, functionality of the applications, or the information in the applications or these materials. Nokia does not provide any warranty for the third-party applications.

BY USING THE APPLICATIONS YOU ACKNOWLEDGE THAT THE APPLICATIONS ARE PROVIDED AS IS WITHOUT WARRANTY OF ANY KIND, EXPRESS OR IMPLIED, TO THE MAXIMUM EXTENT PERMITTED BY APPLICABLE LAW. YOU FURTHER ACKNOWLEDGE THAT NEITHER NOKIA NOR ITS AFFILIATES MAKE ANY REPRESENTATIONS OR WARRANTIES, EXPRESS OR IMPLIED, INCLUDING BUT NOT LIMITED TO WARRANTIES OF TITLE, MERCHANTABILITY OR FITNESS FOR A PARTICULAR PURPOSE, OR THAT THE APPLICATIONS WILL NOT INFRINGE ANY THIRD-PARTY PATENTS, COPYRIGHTS, TRADEMARKS, OR OTHER RIGHTS.

FCC/INDUSTRY CANADA NOTICE

Your device may cause TV or radio interference (for example, when using a telephone in close proximity to receiving equipment). The FCC or Industry Canada can require you to stop using your telephone if such interference cannot be eliminated. If you require assistance, contact your local service facility. This device complies with part 15 of the FCC rules. Operation is subject to the following two conditions: (1) This device may not cause harmful interference, and (2) this device must accept any interference received, including interference that may cause undesired operation. Any changes or modifications not expressly approved by Nokia could void the user's authority to operate this equipment.

Contents

For your safety.....	6	Log.....	22
General information	9	4. Write text.....	23
Access codes	9	Traditional text input.....	23
Lock code.....	9	Predictive text input.....	23
PIN codes.....	9	Copy text	24
PUK codes.....	9	5. Messaging	24
Barring password.....	9	Write and send messages	25
Nokia support and contact information .	10	Mailbox	26
1. Get started.....	10	View messages on the SIM card	27
Insert a SIM card and battery.....	10	Messaging settings.....	27
MicroSD card slot.....	12	Text and multimedia message	
Charge the battery	13	settings	27
Switch the phone on and off	13	E-mail settings	27
Normal operating position.....	13	Message reader.....	27
Configuration settings	14	6. Contacts	28
2. Your phone	15	Add a ringing tone.....	28
Keys and parts	15	7. Gallery	29
Modes.....	16	Gallery functions.....	29
Phone mode.....	16	View videos and images.....	29
Camera mode.....	16	Edit images.....	30
Music mode	16	Edit videos	30
Video view mode	17	Transfer videos from PC.....	30
Standby mode.....	17	Download files.....	31
Active standby.....	17	8. Music player.....	31
Offline profile.....	17	Listen to music.....	31
Indicators.....	18	Music menu	32
Menu	19	Playlists	32
Help	19	Music shop.....	33
Volume control.....	19	Music shop settings.....	33
Keypad lock (keyguard).....	20	Transfer music.....	34
Connect a compatible headset.....	20	Transfer music from PC.....	34
Connect a USB data cable	20	Music transfer with Windows Media	
Attach a wrist strap.....	21	Player.....	35
3. Call functions	21	9. Media.....	35
Make a call	21	Visual Radio	35
Voice dialing	21	Camera.....	36
Answer or reject a call	22	Camera settings	36
Call waiting (network service).....	22		

Movie director	36	Call mailbox	45
Create a quick muvee	37	Phone settings	45
Create a custom muvee	37	General	45
10. Personalization	38	Phone	46
Themes	38	Connection	46
Profiles	39	Applications	47
3-D tones	39	Speech	47
11. Web	40	15. Connectivity	48
Mobile Search	40	PC Suite	48
Web	40	Bluetooth connection	48
Set up the phone for the browser		Bluetooth connection settings	48
service	40	Send data	49
Make a connection	40	Paired devices view	50
View bookmarks	40	Receive data	50
Connection security	41	USB data cable	50
Browse web pages	41	Data transfer	51
Download	42	16. Data manager	51
End a connection	43	Application manager	51
Empty the cache	43	Memory card	52
Browser settings	43	Activation keys	53
12. Organizer	43	17. Battery information	54
Clock	43	Charging and discharging	54
Alarm clock	43	Nokia battery authentication	
Calendar	44	guidelines	55
13. Applications	44	Care and maintenance	57
Download!	44	Additional safety information	59
14. Settings	45	Index	63
Voice commands	45		

For your safety

Read these simple guidelines. Not following them may be dangerous or illegal. Read the complete user guide for further information.



SWITCH ON SAFELY

Do not switch the device on when wireless phone use is prohibited or when it may cause interference or danger.



ROAD SAFETY COMES FIRST

Obey all local laws. Always keep your hands free to operate the vehicle while driving. Your first consideration while driving should be road safety.



INTERFERENCE

All wireless devices may be susceptible to interference, which could affect performance.



SWITCH OFF IN HOSPITALS

Follow any restrictions. Switch the device off near medical equipment.



SWITCH OFF IN AIRCRAFT

Follow any restrictions. Wireless devices can cause interference in aircraft.



SWITCH OFF WHEN REFUELING

Do not use the device at a refueling point. Do not use near fuel or chemicals.



SWITCH OFF NEAR BLASTING

Follow any restrictions. Do not use the device where blasting is in progress.



USE SENSIBLY

Use only in the normal position as explained in the product documentation. Do not touch the antenna unnecessarily.



QUALIFIED SERVICE

Only qualified personnel may install or repair this product.



ENHANCEMENTS AND BATTERIES

Use only approved enhancements and batteries. Do not connect incompatible products.



WATER-RESISTANCE

Your device is not water-resistant. Keep it dry.



BACK-UP COPIES

Remember to make back-up copies or keep a written record of all important information stored in your device.



CONNECTING TO OTHER DEVICES

When connecting to any other device, read its user guide for detailed safety instructions. Do not connect incompatible products.



EMERGENCY CALLS

Ensure the phone function of the device is switched on and in service. Press the end key as many times as needed to clear the display and return to the standby mode. Enter the emergency number, then press the call key. Give your location. Do not end the call until given permission to do so.

■ About your device

The wireless device described in this guide is approved for use on the GSM 850, 900, 1800, and 1900 networks. Contact your service provider for more information about networks.

When using the features in this device, obey all laws and respect local customs, privacy and legitimate rights of others, including copyrights.

Copyright protections may prevent some images, music (including ringing tones), and other content from being copied, modified, transferred, or forwarded.

Your device supports internet connections and other methods of connectivity. Like computers, your device may be exposed to viruses, malicious messages and applications, and other harmful content. Exercise caution and open messages, accept connectivity requests, download content, and accept installations only from trustworthy sources. To increase the security of your device, consider installing antivirus software with a regular update service and using a firewall application.



Warning: To use any features in this device, other than the alarm clock, the device must be switched on. Do not switch the device on when wireless device use may cause interference or danger.

■ Network services

To use the phone you must have service from a wireless service provider. Many of the features require special network features. These features are not available on all networks; other networks may require that you make specific arrangements with your service provider before you can use the network services. Your service provider can give you instructions and explain what charges will apply. Some networks may have limitations that affect how you can use network services. For instance, some networks may not support all language-dependent characters and services.

Your service provider may have requested that certain features be disabled or not activated in your device. If so, these features will not appear on your device menu. Your device may also have a special configuration such as changes in menu names, menu order, and icons. Contact your service provider for more information.

This device supports WAP 2.0 protocols (HTTP and SSL) that run on TCP/IP protocols. Some features of this device, such as web browsing, e-mail, push to talk, instant messaging, and multimedia messaging, require network support for these technologies.

■ Enhancements, batteries, and chargers

Check the model number of any charger before use with this device. This device is intended for use when supplied with power from the AC-3, AC-4, AC-5, DC-4 chargers or CA-44 charger adapter.



Warning: Use only batteries, chargers, and enhancements approved by Nokia for use with this particular model. The use of any other types may invalidate any approval or warranty, and may be dangerous.

For availability of approved enhancements, please check with your dealer. When you disconnect the power cord of any enhancement, grasp and pull the plug, not the cord.

Practical rules about accessories and enhancements

- Keep all accessories and enhancements out of the reach of small children.
- When you disconnect the power cord of any accessory or enhancement, grasp and pull the plug, not the cord.
- Check regularly that enhancements installed in a vehicle are mounted and are operating properly.
- Installation of any complex car enhancements must be made by qualified personnel only.

General information

■ Access codes

Lock code

The lock code (5 digits) helps to protect your phone against unauthorized use. The preset code is 12345. You can change the code and set the phone to request the code. See [Security](#) in General p. 45.

When the device is locked, calls may be possible to the official emergency number programmed into your device.

PIN codes

The personal identification number (PIN) code helps to protect your SIM card against unauthorized use. See [Security](#) in General p. 45. The PIN code is usually supplied with the SIM card.

The PIN2 code (4 to 8 digits) may be supplied with the SIM card and is required for some functions.

The module PIN is required to access the information in the security module. The signing PIN is required for the digital signature. These PIN codes are supplied with the SIM card if the SIM card has a security module in it.

PUK codes

The personal unblocking key (PUK) code is required to change a blocked PIN code. The PUK2 code is required to change a blocked PIN2 code.

If the codes are not supplied with the SIM card, contact your local service provider for the codes.

Barring password

The barring password (4 digits) is required when using [Call barring](#). See Phone p. 46. You can obtain the password from your service provider. If the password is blocked, contact your service provider.

■ Nokia support and contact information

Check www.nokia.com/support or your local Nokia web site for the longer version of the user guide, additional information, downloads, and services related to your Nokia product.

On the web site, you can get information on the use of Nokia products and services. If you need to contact customer service, check the list of local Nokia contact centers at www.nokia.com/customerservice.

For maintenance services, check your nearest Nokia service center at www.nokia.com/repair.

Software updates

Nokia may produce software updates that may offer new features, enhanced functions, or improved performance. You may be able to request these updates through the Nokia Software Updater PC application. To update the device software, you need the Nokia Software Updater application and a compatible PC with Microsoft Windows 2000 or XP operating system, broadband internet access, and a compatible data cable to connect your device to the PC.

To get more information and to download the Nokia Software Updater application, visit www.nokia.com/softwareupdate or your local Nokia web site.

1. Get started

■ Insert a SIM card and battery

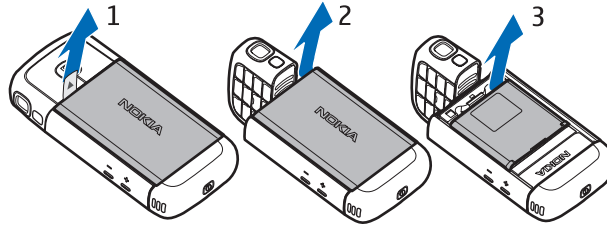
Always switch the device off and disconnect the charger before removing the battery.

This phone uses BP-5M batteries.

For availability and information on using SIM card services, contact your SIM card vendor. This may be the service provider or other vendor.

1. To open the back cover of the phone for the first time, lift it using the plastic strip shown on the back of the phone (1). You can then remove the strip.

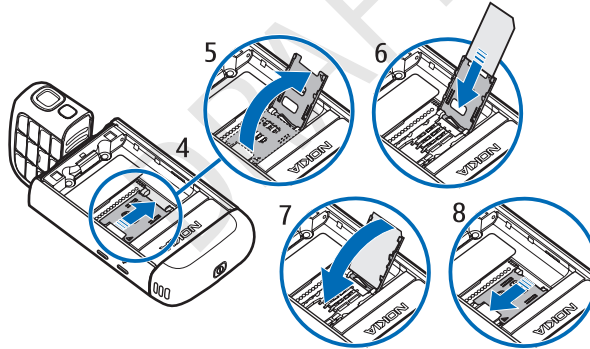
To open the back cover later, turn the lower part of the phone 90 degrees left or right when the number keys of the lower part are on the same side as the display, and lift the back cover (2). To remove the battery, lift it as shown (3).



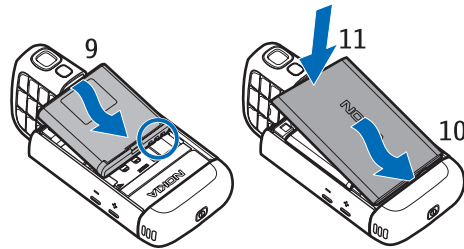
2. To release the SIM card holder, slide it backwards (4), and lift it (5).

Insert the SIM card to the SIM card holder (6). Make sure that the SIM card is properly inserted and that the golden-colored contact area on the card is facing downwards, and the beveled corner faces upwards.

Close the SIM card holder (7), and slide it forward to lock it (8).



3. Replace the battery (9). Replace the back cover (10) and (11).



■ MicroSD card slot

Use only compatible microSD cards approved by Nokia for use with this device. Nokia uses approved industry standards for memory cards, but some brands may not be fully compatible with this device. Incompatible cards may damage the card and the device and corrupt data stored on the card.



Keep microSD cards out of the reach of small children.

You can extend the available memory with a microSD memory card. You can insert or remove a microSD card without switching the phone off.

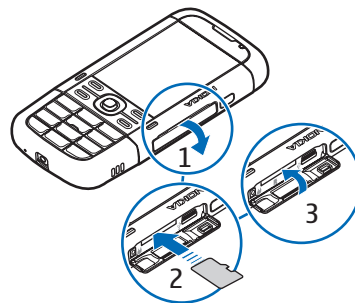


Important: Do not remove the memory card in the middle of an operation when the card is being accessed. Removing the card in the middle of an operation may damage the memory card as well as the device, and data stored on the card may be corrupted.

Insert a microSD card

Note that the memory card may be supplied with the phone, and may already be inserted.

1. Open the side door (1).
2. Place the microSD card in the slot with the golden contact area facing down (2). Push the card gently to lock it into place.
3. Close tight the side door (3).



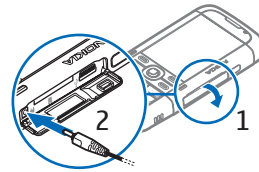
Remove a microSD card

1. Open the side door.

2. Push the card gently to release it. *Remove memory card and press 'OK'* is displayed. Pull the card out, and select **OK**.
3. Close tight the side door.

■ Charge the battery

1. Connect the charger to the wall socket.
2. Open the side door (1), and connect the charger plug to the charger connector in the phone (2).
3. After charging, close tight the side door.



If the battery is completely discharged, it may take a few minutes before the charging indicator appears on the display or before any calls can be made.

The charging time depends on the charger and the battery used. Charging a BP-5M battery with the AC-5 charger takes approximately 80 minutes.

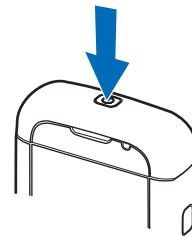
■ Switch the phone on and off

Press and hold the power key.

If the phone asks for a PIN code, enter the PIN code, and select **OK**.

If the phone asks for the lock code, enter the lock code, and select **OK**. The factory setting for the lock code is 12345.

To set the correct time zone, time, and date, select the country you are presently in, then enter the local time and date.



■ Normal operating position

Use the phone only in its normal operating position.



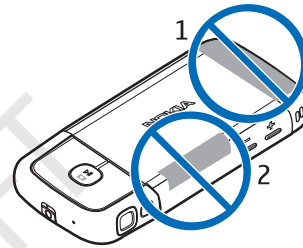
Note: As with any radio transmitting device, avoid touching an antenna unnecessarily when the antenna is in use. For example, avoid touching the cellular antenna during a phone call. Contact with a transmitting or receiving antenna affects the quality of the radio communication, may cause the device to operate at a higher power level than otherwise needed, and may reduce the battery life.



Your device has internal antennas.

Cellular antenna (1)

Bluetooth antenna (2)



■ Configuration settings

Before you can use multimedia messaging, instant messaging, push to talk, e-mail, synchronization, streaming, and the browser, you must have the proper configuration settings on your phone. Your phone may automatically configure browser, multimedia messaging, access point, and streaming settings based on the SIM card used. You may also receive the settings directly as a configuration message, which you save to your phone. For more information on availability, contact your service provider or nearest authorized Nokia dealer.

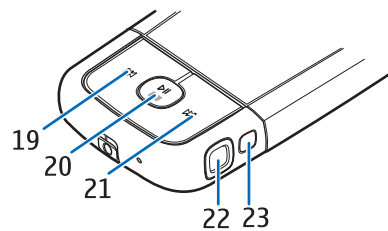
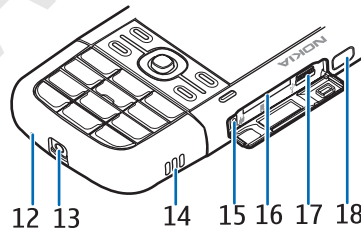
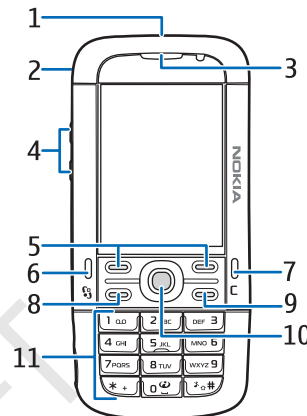
When you receive a configuration message, and the settings are not automatically saved and activated, *1 new message* is displayed. Select **Show** to open the message. To save the settings, select **Options > Save**. You may need to enter a PIN code provided by the service provider.

2. Your phone

■ Keys and parts

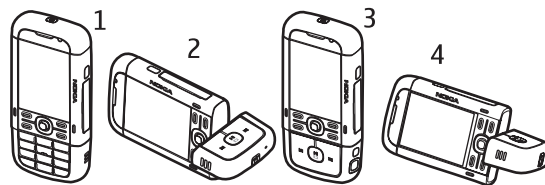
- Power key (1)
- Loudspeaker (2)
- Earpiece (3)
- Volume keys (4)
- Left and right selection keys (5)
- Menu key (6), hereafter described as "select **Menu**"
- Clear key (7)
- Call key (8)
- End key (9)
- Navi™ scroll key (10), hereafter referred to as scroll key
- Number keys (11)
- Microphone (12)
- Nokia AV 2.5-mm connector (13)
- Loudspeaker (14)
- Charger connector (15)
- microSD card slot (16)
- USB connector (17)
- Infrared port (18)

- Media keys:**
- Rewind, zoom out (19)
- Play/Pause/Stop, capture key (20)
- Fast forward, zoom in (21)
- Camera lens (22)
- Camera flash (23)



■ Modes

Your phone has four functional modes: phone mode (1), camera mode (2), music mode (3), and video view mode (4). To switch between the modes, turn the lower part of the phone. There is a short pause before a mode is activated. In the phone mode, do not try to rotate the lower part of the phone more than 90 degrees to the left or 180 degrees to the right. If you force the lower part of the phone to rotate more, the phone will be damaged.



Phone mode

The phone mode is activated when the number keys of the lower part are on the same side as the display.

Camera mode

To activate the camera mode while in the phone mode, turn the lower part of the phone 90 degrees to the left so that the camera lens is pointing away from you when you look at the display.

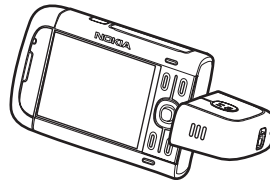
To take a self portrait, turn the lower part of the phone 90 degrees to the right while in the phone mode so that the camera lens is pointing toward you when you look at the display.

Music mode

To activate the music mode while in the phone mode, turn the lower part of the phone 180 degrees to the right so that the keys used to control music playback are on the same side as the display.

Video view mode

When you are viewing a video or still images in the phone mode, you can activate the video view mode. Turn the lower part of the phone 90 degrees to the left so that the camera lens is pointing away from you. In video view mode the display automatically changes to landscape, and you can put the phone on the table, for example, while viewing.



To view the next or previous still images or to fast forward or rewind the video, press the fast forward or rewind media key.

To play or pause the video, press the play/pause/stop media key. To stop the video, press and hold the play/pause/stop media key.

■ Standby mode

When you have switched on the phone, and it is registered to a network, the phone is in the standby mode and ready for use.

To open the list of last dialed numbers, press the call key.

To use the voice commands or voice dialing, press and hold the right selection key.

To change the profile, press the power key, and select a profile.

To start a connection to the web, press and hold 0.

Active standby

When active standby is enabled, you can use the display for fast access to frequently used applications. To select whether the active standby is shown, select [Menu](#) > [Settings](#) > [Phone sett.](#) > [General](#) > [Personalisation](#) > [Standby mode](#) > [Active standby](#) > [On](#) or [Off](#).

To access active standby applications, scroll to the application, and select it. In active standby the default applications are shown across the top of the active standby area, and calendar, to-do, and player events are listed below. To select an application or event, scroll to it, and select it.

Offline profile

The [Offline](#) profile lets you use the phone without connecting it to a network. When the [Offline](#) profile is active, the connection to the wireless network is







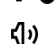
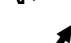



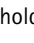
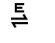
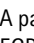



turned off, as indicated by **X** in the signal strength indicator area. All wireless RF signals to or from your phone are prevented, and you can use your device without a SIM card. Use the offline profile in radio sensitive environments—on board aircraft or in hospitals. You can listen to music using the music player when the offline profile is active.

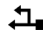
To leave the Offline profile, press the power key, and select another profile.



Important: In the offline profile you cannot make or receive any calls, or use other features that require cellular network coverage. Calls may still be possible to the official emergency number programmed into your device. To make calls, you must first activate the phone function by changing profiles. If the device has been locked, enter the lock code.

■ Indicators

-  The phone is connected to a GSM network.
-  The phone is in offline mode and not connected to a cellular network. See Offline profile p. 17.
-  You received messages to the *Inbox* folder in *Messaging*.
-  There are messages waiting to be sent in *Outbox*.
-  You have missed calls. See Log p. 22.
-  The phone keypad is locked. See Keypad lock (keyguard) p. 20.
-  The loudspeaker is activated.
-  All calls to the phone are diverted to another number.
-  A headset is connected to the phone.
-  A GPRS packet data connection is active.  indicates the connection is on hold and  that a connection is available.
-  A packet data connection is active in a part of the network that supports EGPRS.  indicates the connection is on hold and  that a connection is available. The icons indicate that EGPRS is available in the network, but your device is not necessarily using EGPRS in the data transfer.
-  Bluetooth is switched on.
-  Data is being transmitted using Bluetooth. See Bluetooth connection p. 48.

 A USB connection is active.
Other indicators may also be shown.

■ Menu

In the menu you can access the functions in your phone. To access the main menu, press the menu key; hereafter described as "select **Menu**".

To open an application or a folder, scroll to it, and press the scroll key.

To change the menu view, select **Menu** > **Options** > **Change Menu view** and a view type.

If you change the order of the functions in the menu, the order may differ from the default order described in this user guide.

To close an application or a folder, select **Back** and **Exit** as many times as needed to return to the standby mode, or select **Options** > **Exit**.

To display and switch between open applications, select and hold **Menu**. The application switching window opens, showing a list of open applications. Scroll to an application, and select it.

To mark or unmark an item in applications, press **#**. To mark or unmark several consecutive items, press and hold **#**, and scroll up or down.

Leaving applications running in the background increases the demand on battery power and reduces the battery life.

■ Help

Your device has context-sensitive help. To access help when an application is open, select **Options** > **Help**. To view a list of available help topics in the appropriate category, select **Options** > **Topic list**.

To open a list of all help categories, select **Menu** > **Applications** > **Help**.

■ Volume control

To adjust the earpiece or loudspeaker volume during a call or when listening to an audio file, press the volume keys.

To activate the loudspeaker during a call, select **Loudspeaker**.

To deactivate the loudspeaker during a call, select **Handset**.



Warning: Do not hold the device near your ear when the loudspeaker is in use, because the volume may be extremely loud.

■ Keypad lock (keyguard)

To prevent accidental keypresses, you can lock the keypad.

To lock the keypad in the phone mode, press the left selection key and * within 1.5 seconds. Or, to set the phone automatically lock the keypad after a certain time, select **Menu** > **Settings** > **Phone sett.** > **General** > **Security** > **Phone and SIM card** > **Keypad autolock period** > **User defined** and the desired time.

To lock the keypad in music mode, press the power key quickly, and select **Lock keypad**.

To unlock the keypad in the phone mode, select **Unlock**, and press * within 1.5 seconds.

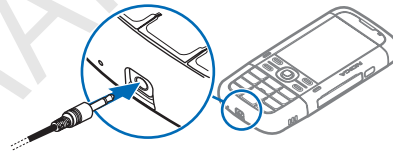
To unlock the keypad in music mode, select **Unlock** > **OK**.

When the keypad lock is on, calls may be possible to the official emergency number programmed into your device.

■ Connect a compatible headset

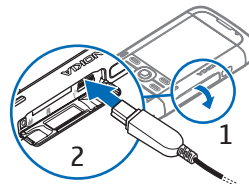
Do not connect products that create an output signal as this may cause damage to the device. Do not connect any voltage source to the Nokia AV connector.

When connecting any external device or any headset, other than those approved by Nokia for use with this device, to the Nokia AV connector, pay special attention to volume levels.



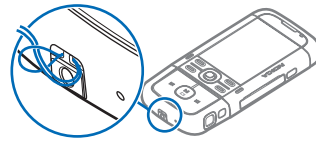
■ Connect a USB data cable

To set the default USB connection mode, select **Menu** > **Settings** > **Connectivity** > **USB** > **USB mode** and the desired mode. To set whether the default mode is activated automatically, select **Ask on connection** > **No**.



■ Attach a wrist strap

Connect the wrist strap according to the graphic.



3. Call functions

■ Make a call

1. In the standby mode, enter the phone number, including the area code. Press the clear key to remove a number.
For international calls, press * twice for the international prefix (the + character replaces the international access code).
2. To call the number, press the call key.
3. To end the call, or to cancel the call attempt, press the end key.

To make a call from *Contacts*, select *Menu > Contacts*, and scroll to the desired name. To call the number, press the call key.

To call your call mailbox (network service), press and hold 1 in the standby mode. You must define the mailbox number before you can call your mailbox. See Call mailbox p. 45.

Voice dialing

A voice tag is added automatically to all entries in *Contacts*.

Use long names, and avoid similar names for different numbers.

Make a voice dialing call

Voice tags are sensitive to background noise. Use voice tags in a quiet environment.



Note: Using voice tags may be difficult in a noisy environment or during an emergency, so you should not rely solely upon voice dialing in all circumstances.

1. In the standby mode, press and hold the right selection key. A short tone is played, and *Speak now* is displayed.

If you are using a compatible headset with the headset key, press and hold the headset key.

2. Speak the voice command clearly. The phone plays the voice command of the best match. After 1.5 seconds, the phone dials the number; if the result is not the correct one, before dialing select **Next** and another entry.

Using voice commands to carry out a phone function is similar to voice dialing. See Voice commands p. 45.

■ Answer or reject a call

To answer a call, press the call key.

To adjust the volume during the call, press the volume keys.



Tip: If a compatible headset is connected to the phone, press the headset key to answer and end a call.

To mute the ringing tone, select **Silence**.

To reject the call, press the end key, or select **Options** > **Reject**.

To send a text message to the caller informing why you cannot answer the call, select **Options** > **Send text message**. To activate the text message reply and edit the text in the message, select **Menu** > **Settings** > **Phone sett.** > **Phone** > **Call** > **Reject call with SMS** and **Message text**. See Phone p. 46.

Call waiting (network service)

During a call, to answer the waiting call, press the call key. The first call is put on hold. To end the active call, press the end key.

To activate the **Call waiting** function, select **Menu** > **Settings** > **Phone sett.** > **Phone** > **Call** > **Call waiting** > **Activate**.

To switch between the two calls, select **Swap**.

■ Log

In the log, you can monitor phone calls, text messages, packet data connections, and fax and data calls registered by the phone.

Connections to your remote mailbox, multimedia messaging center, or browser pages are shown as data calls or packet data connections in the general communications log.





Note: The actual invoice for calls and services from your service provider may vary, depending on network features, rounding off for billing, taxes, and so forth.



Note: Some timers, including the life timer, may be reset during service or software upgrades.

4. Write text

When you write text,  appears on the top right of the display, indicating predictive text input, or  appears, indicating traditional text input. To set the predictive text input on or off when writing text, press *, and select [Activate predictive text](#) or [Predictive text > Off](#).

Abc. abc, or **ABC** is displayed next to the text input indicator, indicating the character case. To change the character case, press #.

123 indicates the number mode. To change between letter and number mode, press # repeatedly until number mode is active; or press *, and select [Number mode](#) or [Alpha mode](#).

■ Traditional text input

Press a number key, 1 to 9, repeatedly until the desired character appears. The availability of characters depends on the selected writing language. To select the language, select [Menu > Settings > Phone sett. > General > Personalisation > Language > Writing language](#).

If the next letter you want is on the same key as the present one, wait until the cursor appears (or scroll forward to end the time-out period), and enter the letter.

To insert a number, press and hold the number key.

The most common punctuation marks and special characters are available under the 1 key. For more characters, press and hold *.

To erase a character, press the clear key. To erase more characters, press and hold the clear key.

To insert a space, press 0. To move the cursor to the next line, press 0 three times.

■ Predictive text input

To enter any letter with a single keypress, use predictive text input.

1. To write the desired word, press the keys 2–9. Press each key only once for one letter. The word changes after every keypress.

For the most common punctuation marks, press 1. For more punctuation marks and special characters, press and hold *.

To erase a character, press the clear key. To erase more characters, press and hold the clear key.

2. When you have finished the word and it is correct, to confirm it, scroll forward or insert a space.

If the word is not correct, to view the matching words the dictionary has found one by one, press * repeatedly.

If the ? character is shown after the word, the word you intended to write is not in the dictionary. To add a word to the dictionary, select **Spell**. Enter the word (up to 32 letters) using traditional text input, and select **OK**. The word is added to the dictionary. When the dictionary becomes full, a new word replaces the oldest added word.



■ Copy text

1. To select letters and words, press and hold #, and at the same time scroll left or right. To select lines of text, press and hold #, and at the same time scroll up or down.
2. To copy the text to the clipboard, press and hold #, and at the same time select **Copy**.
3. To insert the text, scroll to the insertion point, press and hold #, and at the same time select **Paste**.


5. Messaging


You can create, send, receive, view, edit, and organize text messages, multimedia messages, e-mail messages, presentations, and documents. You can also receive messages and data using Bluetooth wireless technology, receive and forward picture messages, receive service messages and cell broadcast messages, and send service commands.

To open the **Messaging** menu, select **Menu > Messaging**. You can see the **New message** function and a list of default folders:

 **Inbox**—contains received messages except e-mail and cell broadcast messages. When there are unread messages in the inbox, the icon changes to .

To open a received message, select **Menu** > **Messaging** > **Inbox** and the desired message.


 **My folders**—for organizing your messages into folders. You can create new folders, rename and delete folders.


 **Mailbox**—for connecting to your remote mailbox to retrieve your new e-mail messages or viewing your previously retrieved e-mail messages offline. After you define settings for a new mailbox, the name given to that mailbox is displayed instead of **Mailbox**.


Before you can send, receive, retrieve, reply to, and forward e-mail to a separate e-mail account, you must do the following:

- Configure an internet access point (IAP) correctly. See *Connection* p. 46.
- Define your e-mail settings correctly. See *E-mail settings* p. 27.

 **Drafts**—saves draft messages that have not been sent.

 **Sent**—saves the messages that are sent, excluding messages sent using Bluetooth.

 **Outbox**—temporarily saves the messages waiting to be sent.

 **Reports** (network service)—saves the delivery reports of the text messages, special message types such as business cards, and multimedia messages you have sent. Receiving a delivery report of a multimedia message that has been sent to an e-mail address may not be possible.

■ Write and send messages

Your device supports the sending of text messages beyond the character limit for a single message. Longer messages are sent as a series of two or more messages. Your service provider may charge accordingly. Characters that use accents or other marks, and characters from some language options, take up more space, limiting the number of characters that can be sent in a single message.

The wireless network may limit the size of MMS messages. If the inserted picture exceeds this limit, the device may make it smaller so that it can be sent by MMS.

Only devices that have compatible features can receive and display multimedia messages. The appearance of a message may vary depending on the receiving device.

Before you can send and receive an SMS message, a multimedia message, or an e-mail, or connect to your remote mailbox, you must have the correct connection settings in place. See *Messaging settings* p. 27.

1. To create a message, select **Menu** > **Messaging** > **New message** > **Text message**, **Multimedia message**, **Audio message**, or **E-mail**.
Audio messages are multimedia messages that consist of a single sound clip.
2. Press the scroll key to select the recipients or groups from **Contacts** or enter the phone number or e-mail address of the recipient in the **To** field. Separate recipients with a semicolon (;).
3. When creating an e-mail or multimedia message, scroll down to the subject field, and write the message subject.
4. Scroll down to the message field.
5. Write the message. The message length indicator shows how many characters you can enter in the message. For example, 10 (2) means that you can still add 10 characters for the text to be sent as two separate text messages.
To use a template for the text message, select **Options** > **Insert** > **Template**. To use a text template for the multimedia message, select **Options** > **Insert object** > **Template**.
To add a media object to a multimedia message, select **Options** > **Insert object** > **Image**, **Sound clip**, or **Video clip**. To create and add a new media object, select **Options** > **Insert new** > **Image**, **Sound clip**, **Video clip** or **Slide**.
To add a media object to an e-mail, select **Options** > **Insert** > **Image**, **Sound clip**, **Video clip**, **Note**, **Other**, or **Template**.
6. To send the message, select **Options** > **Send**.

■ Mailbox

Select **Menu** > **Messaging** > **Mailbox**. When **Connect to mailbox?** is displayed, select **Yes** to connect to your mailbox (network service) or **No** to view previously retrieved e-mail messages offline. To connect to the mailbox afterwards, select **Options** > **Connect**.



Important: Exercise caution when opening messages. E-mail messages may contain malicious software or otherwise be harmful to your device or PC.

To retrieve all e-mail messages from the mailbox to your phone, select **Options** > **Retrieve e-mail** > **All**.

To delete an e-mail from the phone while still retaining it in the remote mailbox, select **Options** > **Delete** > **Phone only**. The e-mail heading stays in your phone. To delete an e-mail from the phone and the remote mailbox, select **Options** > **Delete** > **Phone and server**.

When you are online, to end the data connection to the remote mailbox, select **Options** > *Disconnect*. You can view the retrieved e-mail messages and headings offline.

■ View messages on the SIM card

To view messages on the SIM card, select **Menu** > *Messaging* > **Options** > *SIM messages*, and copy the SIM messages to a folder in your phone.

■ Messaging settings

Text and multimedia message settings

To change the settings affecting the sending, receiving and viewing of text or multimedia messages, select **Menu** > *Messaging* > **Options** > *Settings* > *Text message* or *Multimedia message*, and the desired settings.

E-mail settings

Select **Menu** > *Messaging* > **Options** > *Settings* > *E-mail* > *Mailboxes* and a mailbox. If no mailbox settings have been defined before, you are asked if you want to define the settings.

Select from the following:

Connection settings—To define the correct *Incoming e-mail* and *Outgoing e-mail* settings, contact your e-mail service provider for the settings

User settings—To define settings for sending your e-mails and set the phone to alert when receiving a new e-mail

Retrieval settings—To define settings for retrieving e-mail messages, such as retrieving only message headers, the number of messages to retrieve

Automatic retrieval—To define whether to automatically retrieve the headings to your device when you receive a notification of new e-mail in your remote mailbox, or to have e-mail headers automatically retrieved

■ Message reader

With *Msg. reader*, you can listen to received text, multimedia, and e-mail messages.

To listen to a message in *Inbox* or *Mailbox*, scroll to the message or mark the messages, and select **Options** > *Listen*. To skip to the next message, scroll down.



Tip: When *1 new message* or *New e-mail* is displayed in the standby mode, to listen to the received messages, press and hold the left selection key until *Msg. reader* starts.

6. Contacts

You can save and manage contact information, such as names, phone numbers, and addresses.

Select **Menu** > *Contacts*.

To add a new contact, select **Options** > *New contact*. Fill in the fields you want, and select **Done**.

To assign default numbers and addresses, select a contact and **Options** > *Defaults*. Scroll to the desired default option, and select **Assign**.

To copy names and numbers from a SIM card to your phone, select **Options** > *SIM contacts* > *SIM directory*. Scroll to the name you want to copy or mark the desired names, and select **Options** > *Copy to Contacts*.

To copy a phone, fax, or pager number from contacts to your SIM card, scroll to the contact you want to copy, and select **Options** > *Copy* > *To SIM directory*.

Create a contact group so that you can send text or e-mail messages to several recipients at the same time. Select **Menu** > *Contacts*, scroll right, and select **Options** > *New group*. Enter a name for the group, and select the group. Select **Options** > *Add members*. Mark the contacts you want to add to the group, and select **OK**.

■ Add a ringing tone

To set a ringing tone (also a video ringing tone) to a contact or a contact group, select **Menu** > *Contacts*.

To add a ringing tone to a contact, select the contact and **Options** > *Ringing tone*, and the desired ringing tone.

To add a ringing tone to a group, scroll right to the groups list and to a group. Select **Options** > *Ringing tone* and the ringing tone for the group.

To remove the personal or group ringing tone, select *Default tone* as a ringing tone.

7. Gallery

Use *Gallery* to save and organize your images, videos, music tracks, sound clips, playlist, streaming links, .ram files, and presentations.

Select **Menu** > *Gallery*. To open a folder (such as *Images*), select it.

To open a file, select it. The file opens in its corresponding application.

The videos you download or transfer to your phone are saved in *Videos*. To access *Videos* in the standby mode, select *Videos*, or select **Menu** > *Gallery* > *Videos*.

You can transfer videos to your phone from a compatible PC, and download video clips from compatible internet video services to your phone using packet data.

■ Gallery functions

To set an image as a wallpaper, select *Images*, and scroll to the image. Select **Options** > *Use image* > *Set as wallpaper*. To assign the image to a contact, select *Assign to contact*.

To set a video as a video ringing tone, select *Videos*, and scroll to the video. Select **Options** > *Use video* > *Set as ringing tone*. To assign the video for a contact, select *Assign to contact*.

To copy files to phone memory or to the memory card, scroll to the file or mark the files, and select **Options** > *Organise* > *Copy to phone mem.* or *Copy to memory card*.

To create image or video folders and move files to them, select *Images* or *Videos*, and scroll to a file. Select **Options** > *Organise* > *New folder* and the memory, and enter a name for the folder. Mark the files you want to move to the folder, and select **Options** > *Organise* > *Move to folder* and the folder.

View videos and images

When you are viewing a videos or still images in the phone mode, you can activate the video view mode. Turn the lower part of the phone 90 degrees to the left so that the camera lens is pointing away from you. In video view mode the display automatically changes to landscape, and you can put the phone on the table, for example, while viewing.

To view the next or previous still images, press the fast forward or rewind media key.

To fast forward or rewind the video, press the fast forward or rewind media key. To play or pause the video, press the play/pause/stop media key. To stop the video, press and hold the play/pause/stop media key.

Edit images

To edit images in [Gallery](#), scroll to the image, and select [Options](#) > [Edit](#).

Select [Options](#) > [Apply effect](#) to crop and rotate the image; adjust the brightness, color, contrast, and resolution; and add effects, text, clip art, or a frame to the picture.

Shortcuts in the image editor:

- To view an image in the full screen, press *. To return to the normal view, press * again.
- To rotate an image clockwise or counterclockwise, press 3 or 1.
- To zoom in or out, press 5 or 0.
- To move on a zoomed image, scroll up, down, left, or right.

Edit videos

To edit videos in [Gallery](#) and create custom video clips, scroll to a video clip, and select [Options](#) > [Video editor](#) > [Options](#) > [Edit video clip](#).

In the video editor you can see two timelines: video clip timeline and sound clip timeline. The images, text, and transitions added to a video are shown on the video clip timeline. To switch between the timelines, scroll up or down.

Transfer videos from PC

To transfer videos from a compatible PC, use a compatible USB cable or Bluetooth connectivity.

The requirements of the PC for video transfer:

- Microsoft Windows XP operating system (or later)
- Nokia PC Suite 6.82 or later
- Nokia Video Manager application (a add-on application to PC Suite)

To transfer videos use Nokia Video Manager, connect the compatible USB cable or activate Bluetooth connection, and select [PC Suite](#) as the connection mode.

To change the default USB connection mode, select [Menu](#) > [Settings](#) > [Connectivity](#) > [USB](#) > [USB mode](#).

Nokia Video Manager is optimized for transcoding and transferring video files. For information about transferring video with Nokia Video Manager, see the Nokia Video Manager help.

Download files

Select [Menu](#) > [Gallery](#), the folder for the file type you want to download, and the download function (for example, [Images](#) > [Downl. graphics](#)). The browser opens. Choose a bookmark for the site to download from.

8. Music player



Warning: Listen to music at a moderate level. Continuous exposure to high volume may damage your hearing. Do not hold the device near your ear when the loudspeaker is in use, because the volume may be extremely loud.

To activate music mode and start [Music player](#), turn the lower part of the phone to the right so that the playback control keys are on the same side as the display.

You can listen to music also when the [Offline](#) profile is activated. See [Offline profile](#) p. 17.

To add songs to your device, see [Transfer music](#) p. 34.

For more information about copyright protection, see [Activation keys](#) p. 53.

■ Listen to music


1. Activate the music mode.
2. In [Music menu](#), select the category, such as [All songs](#) or [Albums](#).
3. Select the music you want to play.



Use the media keys to control playback.

- Press the play/pause/stop key to play or pause a song. Press and hold the key to stop the playback.
- Press the rewind key to rewind the song or to skip backwards.
- Press the fast forward key to fast forward the song or to skip forward.

You can also use the scroll key to control the player.

To adjust the volume, use the volume key.

To switch random play () on or off, select **Options** > *Shuffle*.

To repeat the current song () , all songs () , or to switch repeat off, select **Options** > *Repeat*.

To modify the tone of the music playback, select **Options** > *Equaliser*.

To modify the balance loudness or stereo widening, select **Options** > *Audio settings*.

To view a visualization during playback, select **Options** > *Start visualisation*.

To return to the standby mode and leave the player in the background, press the end key. If *Active standby* is *On*, the currently playing song is displayed in the standby mode. To access the music player from the standby mode, select the currently playing song. To switch to another open application, press and hold **Menu**.

■ Music menu

To select more music to play in *Now playing* view, select **Options** > *Go to Music menu*. To return to the *Now playing* view, select **Options** > *Go to Now playing*.

The music menu shows the music available in the phone and compatible memory card (if inserted). *All songs* lists all music. To view sorted songs, select *Albums*, *Artists*, *Genres*, or *Composers*. To view playlists, select *Playlists*.

To refresh the library after you have updated the song selection in your phone, select **Options** > *Refresh Music library*.

■ Playlists

To view and manage playlists, in the music menu, select *Playlists*. The following playlists appear automatically: *Most played tracks*, *Recently played songs*, and *Recent additions*.

To view details of the playlist, select **Options** > *Playlist details*.

Create a playlist

1. Select **Options** > *Create playlist*.
2. Enter a name for the playlist, and select **OK**.
3. Select artists to find the songs you want to include in the playlist. Press the scroll key to add items. To show the song list under an artist title, scroll right. To hide the song list, scroll left.

4. When you have made your selections, select **Done**. If a compatible memory card is inserted, the playlist is saved to the memory card.

To add more songs later, when viewing the playlist, select **Options** > **Add songs**.

To add songs, albums, artists, genres, and composers to a playlist from the different views of the music menu, select an item and **Options** > **Add to a playlist** > **Saved playlist** or **New playlist**.

To remove a song from a playlist, select **Options** > **Remove from playlist**. This deletion does not delete the song from the phone ; it only removes it from the playlist.

To reorder songs in a playlist, scroll to the song you want to move, and select **Options** > **Reorder list**, scroll to a new position, and select **Drop**. Select **Grab** to continue reordering, or select **Done**.

■ Music shop

In the music shop (network service) you can search, browse, and purchase music for downloading to your phone. The variety and appearance of music shop services may vary. For more information and availability of music shop, contact your service provider.

You must have music shop settings and valid internet connections in order to use this service. For more details, see Music shop settings p. 33, and **Access points** in Connection p. 46.

To go to music shop, in the **Music player**, select **Options** > **Go to Music shop**

Music shop settings

The availability and appearance of the music shop settings may vary. The settings may also be predefined, and you cannot edit them.

If the settings are not predefined, you may be asked to enter the following settings:

Address—You must define the web address of the music shop service.

Default acc. pt.—Select the access point to use when connecting to the music shop.

User name—Enter your user name for the music shop.

Password—Enter your password for the music shop.

If *User name* and *Password* fields are left empty, you may have to enter them at login.

■ Transfer music

You can buy music protected with WMDRM from online music shops, and transfer the music to your phone.

To transfer music from a compatible PC or other compatible devices, use a compatible USB cable or Bluetooth connectivity. You cannot transfer WMDRM protected music files using Bluetooth connection.

To refresh the library after you have updated the song selection in your phone, in the *Music menu*, select *Options* > *Refresh Music library*

The requirements of the PC for music purchase and transfer:

- Microsoft Windows XP operating system (or later)
- A compatible version of Windows Media Player application
- Nokia PC Suite 6.82 or later

Transfer music from PC

You can use three different methods to transfer music:

- To view your phone on a PC as an external hard drive where you can transfer any data files, make the connection with a compatible USB cable or Bluetooth connectivity.
If you are using the USB cable, select *Data transfer* as the connection mode. A compatible memory card needs to be inserted in the phone. You cannot transfer WMDRM protected music files using *Data transfer*.
- To synchronize music with Windows Media Player, connect the compatible USB cable and select *Media player* as the connection mode. A compatible memory card needs to be inserted in the phone.
- To use Nokia Music Manager in Nokia PC Suite, connect the compatible USB cable or activate Bluetooth connection, and select *PC Suite* as the connection mode. You cannot transfer WMDRM protected music files using *PC Suite*.

To change the default USB connection mode, select *Menu* > *Settings* > *Connectivity* > *USB* > *USB mode*.

Both Windows Media Player and Nokia Music Manager in Nokia PC Suite have been optimized for transferring music files. For information about transferring music with Nokia Music Manager, see the Nokia PC Suite user guide.

Music transfer with Windows Media Player

The functionality of the music synchronization may vary between different versions of the Windows Media Player application. For more information, see the corresponding Windows Media Player guides and helps.

9. Media

■ Visual Radio

You can use the Visual Radio application as a FM radio with automatic tuning and preset stations, or with parallel visual information related to the radio program if you tune in to stations that offer Visual Radio service. The Visual Radio service uses packet data (network service).

To use the Visual Radio service, the following requirements must be met:

- The radio station and your service provider must support this service.
- Your internet access point must be defined for access to the network operator's Visual Radio server.
- The radio station must have the correct Visual Radio service ID defined and have Visual Radio service enabled.

Visual Radio cannot be started when the phone is in offline mode.

The FM radio depends on an antenna other than the wireless device antenna. A compatible headset or enhancement needs to be attached to the device for the FM radio to function properly.




Warning: Listen to music at a moderate level. Continuous exposure to high volume may damage your hearing. Do not hold the device near your ear when the loudspeaker is in use, because the volume may be extremely loud.

You can make a call or answer an incoming call while listening to the radio. The radio is turned off when there is an active call.

To open Visual Radio, select **Menu > Media > Radio**.

To turn the radio off, select **Exit**.

■ Camera


To activate the camera mode while in the phone mode, turn the lower part of the phone 90 degrees to the left so that the camera lens is pointing away from you when you look at the display. To take a self portrait, turn the lower part of the phone 90 degrees to the right so that the camera lens is pointing toward you when you look at the display.  on the upper left of the display indicates the still image mode.

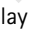
To capture an image, press the capture key. The image is saved to *Images* in *Gallery*, and the image is displayed. To return to the viewfinder, select **Back**. To delete the image, press the clear key.

To zoom in or out, press the fast forward or rewind media key.

To turn the flash on, select **Options** > *Flash* > *On*. If you select *Automatic*, flash is used automatically when necessary.

Keep a safe distance when using the flash. Do not use the flash on people or animals at close range. Do not cover the flash while taking a picture.

To record a video, select **Options** > *Video mode*, or scroll right.  on the upper left of the display indicates the video mode. To start the recording, press the capture key or the scroll key. To pause the recording, press the capture key. To stop the recording, press and hold the capture key.

To use the panorama mode, select **Options** > *Panorama mode*, or scroll right.  on the upper left of the display indicates the panorama mode. Press the capture key to start capturing a panorama image. The panorama preview is shown on the display. Turn slowly to right or left. You cannot change the direction. You turn too fast if the arrow on the display is red. To stop the panorama, press the capture key again.

Camera settings

Your device supports an image capture resolution of 1600 x 1200 pixels.

To change camera settings for images or videos, select **Menu** > *Media* > *Camera* > **Options** > *Settings* > *Image* or *Video* and the desired settings.

■ Movie director

A muvee is a short, edited video clip that can contain video, images, music, and text. Quick muvee is created automatically by *Movie director* after you select the style for the muvee. *Movie director* uses the default music and text associated

with the chosen style. In a custom muvee you can select your own video and music clips, images and style, and add an opening and closing message. You can send muvees with MMS.

A muvee can be saved in *Gallery* in .3gp file format.

To create muvees, select **Menu** > *Media* > *Movie*. Mark images and videos, and select **Options** > *Create muvee*.

Create a quick muvee

1. To create a quick muvee, select **Menu** > *Media* > *Movie*. Select the videos for the muvee, and scroll right to select the images, and select **Options** > *Create muvee*.
2. Select a style for the muvee from the style list.

Create a custom muvee

1. To create a custom muvee, select **Menu** > *Media* > *Movie*. Select the videos for the muvee, and scroll right to select the images, and select **Options** > *Create muvee*. The style selection view opens.
2. Scroll to the desired style, and select **Options** > *Customise*.
3. In *Videos & images*, reorder and edit the selected items, or add or remove items from your muvee. You can define the order in which the files are played in the muvee. Select the file you want to move. Scroll to the file below which you want to place the marked file, and press the scroll key. To add or remove images and videos from the muvee, select **Options** > *Add/Remove*.

In *Music*, select the music for the muvee.

To add albums and their content to the muvee, in the image or video clip list view, select **Options** > *Albums*.

In *Message* you can add an opening and closing text to a muvee.

In *Length*, you can define the length of the muvee. Select from the following:

Multimedia message—to optimize the length of the muvee for MMS sending

Auto-select—to include all the selected images and video clips in the muvee

Same as music—to set the muvee duration to be the same as the chosen music clip

User defined—to define the length of the muvee

4. Select **Options** > *Create muvee*. The preview view opens.

5. To preview the custom muvee before saving it, select **Options** > *Play*.
6. To save the muvee, select **Options** > *Save*.

To create a new custom muvee by using the same style settings, select **Options** > *Recreate*.

Select content

To edit the selected video clips, in the *Videos & images* folder, select **Options** > *Select contents*. You can select which parts of the video clip you want to include or exclude in the muvee. In the slide, green indicates included, red indicates excluded, and grey indicates neutral parts.

To include a part of the video clip in the muvee, scroll to the part, and select **Options** > *Include*. To exclude a part, select **Options** > *Exclude*. To exclude a shot, select **Options** > *Exclude shot*.

To let *Movie director* randomly include or exclude a certain part of the video clip, scroll to the part, and select **Options** > *Mark as neutral*. To randomly include or exclude parts of the clip, select **Options** > *Mark all as neutral*.

Settings

In the style selection view, select **Options** > *Customise* > *Settings* to edit the following options:

Memory in use—Select where to save your muvees.

Resolution—Select the resolution of your muvees. Select *Automatic* to use the optimal resolution based on the number and length of the video clips you have selected.

Default muvee name—Set a default name for the muvees.

10. Personalization

■ Themes

To change the look of your phone display, activate a theme. A theme can include the standby mode wallpaper and power saver. You can edit a theme to personalize your phone further.

Select **Menu** > *Personalis.* > *Themes*. To see a list of the available themes, select *General*. The active theme is indicated by a check mark.

To preview a theme, scroll to the theme, and select [Options](#) > [Preview](#). To activate the previewed theme, select [Set](#).

In [Themes](#), you can also set the menu view type, set a custom wallpaper, and personalize the look of the power saver.

To apply or edit an audio theme, select [Menu](#) > [Personalis](#). > [Themes](#) > [Audio themes](#).

■ Profiles

In [Profiles](#), you can adjust and personalize the phone tones for different events, environments, or caller groups. You can see the currently selected profile at the top of the display in the standby mode. If the [General](#) profile is in use, only the current date is shown.

Select [Menu](#) > [Personalis](#). > [Profiles](#).

To activate the profile, select the profile and [Activate](#).



Tip: To quickly change to [Silent](#) profile from any other profile, in the standby mode, press and hold #.

To personalize a profile, select the profile, [Personalise](#) and the desired settings.

When using the [Offline](#) profile, the phone is not connected to the GSM network. If no SIM card is installed, to use some functions of the phone, start the phone in [Offline](#).



Important: In the offline profile you cannot make or receive any calls, or use other features that require cellular network coverage. Calls may still be possible to the official emergency number programmed into your device. To make calls, you must first activate the phone function by changing profiles. If the device has been locked, enter the lock code.

■ 3-D tones

With [3-D tones](#) you can apply three-dimensional sound effects to ringing tones.

Not all ringing tones support 3-D effects. To edit 3-D tone settings, select [Menu](#) > [Personalis](#). > [3-D tones](#).

11. Web

■ Mobile Search

Use Mobile Search to access search engines, and find and connect to local services, web sites, images, and mobile content. For example, you can use the application to find and call local restaurants and shops, and use the advanced mapping technology to assist you in finding their location.

The availability of this service may vary according to your country or sales area.

Select [Menu](#) > [Web](#) and the Search application. For additional instructions on the application, see the application help.

■ Web

To browse web pages, select [Menu](#) > [Web](#) > [Browser](#).

Check the availability of services, pricing, and tariffs with your service provider. Service providers also give you instructions on how to use their services.

Set up the phone for the browser service

Your device may configure the WAP or internet access point automatically based on your SIM card.

You may receive service settings in a configuration message from the service provider.

To define an access point manually, see [Access points](#) in Connection p. 46.

Make a connection

To access web pages, do the following:


- Select the home page (🏠) of your service provider.
- Select a bookmark from the bookmarks view.
- In the bookmarks view, enter the address of the web page, and select [Go to](#).



View bookmarks


Your device may have preinstalled bookmarks and links for third-party internet sites. You may also access other third-party sites through your device. Third-party sites are not



affiliated with Nokia, and Nokia does not endorse or assume liability for them. If you choose to access such sites, you should take precautions for security or content.

Bookmarks are indicated by the following icons:


 The starting page defined for the default access point.

 The automatic bookmarks folder contains bookmarks () that are collected automatically when you browse pages.

 Any bookmark showing the title or internet address of the bookmark.

 and  may be replaced with the website's icon.

Connection security

If the security indicator  is displayed during a connection, the data transmission between the device and the internet gateway or server is encrypted.

The security icon does not indicate that the data transmission between the gateway and the content server (or place where the requested resource is stored) is secure. The service provider secures the data transmission between the gateway and the content server.

To view details about the connection, encryption status, and information about server authentication, select [Options](#) > [Tools](#) > [Page info](#).

Security features may be required for some services, such as banking services. For such connections you need security certificates. For more information, contact your service provider. See also [Security](#) in General p. 45.

Browse web pages

Keys and commands for browsing

To open a link, make selections, or check boxes, press the scroll key.

To go to the previous page while browsing, select [Back](#); or select [Options](#) > [Navigation options](#) > [History](#) to view list of the pages visited during a browsing session. The history list is cleared each time a session is closed.

To save a bookmark while browsing, select [Options](#) > [Save as bookmark](#).

To retrieve the latest content from the server, select [Options](#) > [Navigation options](#) > [Reload](#).

To open the browser toolbar, scroll to an empty part of the page, and press the scroll key.

Keypad shortcuts while browsing

1—Open your bookmarks.

- 2—Search for keywords in the current page.
- 3—Return to the previous page.
- 5—List all open windows.
- 8—Show the page overview of the current page. Press 8 again to zoom in and view the desired section of the page.
- 9—Enter a new web address.
- 0—Go to the start page.
- * or #—Zoom the page in or out.

Mini map

Mini map helps you navigate web pages that contain large amount of information. To set Mini map on, select [Options](#) > [Settings](#) > [General](#) > [Mini map](#).

Web feeds and blogs

The browser automatically detects if a web page contains web feeds. To subscribe to a web feed, select [Options](#) > [Subscribe](#) and a feed, or click on the link. To view the web feeds you have subscribed to, in the bookmarks view, select [Web feeds](#).

To update a web feed, select it, and [Options](#) > [Refresh](#).

To define how the web feeds are updated, select [Options](#) > [Settings](#) > [Web feeds](#).

Saved pages

You can save pages and view them later offline.

To save a page while browsing, select [Options](#) > [Tools](#) > [Save page](#).

To open the [Saved pages](#) view, in the bookmarks view, select [Saved pages](#). To open a page, select it.

To start a connection to the browser service and retrieve the page again, select [Options](#) > [Navigation options](#) > [Reload](#). The phone stays online after you reload the page.

Download

You can download items such as ringing tones, images, operator logos, software, and video clips using the mobile browser.

Once downloaded, items are handled by the respective applications on your phone, for example, a downloaded photo is saved in [Gallery](#).



Important: Only install and use applications and other software from trusted sources, such as applications that are Symbian Signed or have passed the Java Verified™ testing.

End a connection

To end the connection and view the browser page offline, select **Options** > **Tools** > **Disconnect**. To quit browsing and to return to the standby mode, select **Options** > **Exit**.

Empty the cache

A cache is a memory location that is used to store data temporarily. If you have tried to access or have accessed confidential information requiring passwords, empty the cache after each use. The information or services you have accessed are stored in the cache. To empty the cache, select **Menu** > **Web** > **Browser** > **Options** > **Clear privacy data** > **Clear cache**.

To clear all privacy data, including the cache, cookies, form data passwords, and browsing history, select **Menu** > **Web** > **Browser** > **Options** > **Clear privacy data** > **All**.

Browser settings

To change the settings, such as access point, page view, or privacy settings, select **Options** > **Settings** > **General**, **Page**, **Privacy**, or **Web feeds**.

12. Organiser

■ Clock

Select **Menu** > **Organiser** > **Clock**. To change the clock settings, and to set the time and date, select **Options** > **Settings**.

Alarm clock

To set a new alarm, scroll right to **Alarm**, and select **Options** > **New alarm**. Enter the alarm time, select whether and when the alarm is repeated, and select **Done**.

To cancel an alarm, scroll to the alarm, and select **Options** > **Remove alarm**. To deactivate a repeated alarm, select **Options** > **Deactivate alarm**.

Select [Stop](#) to turn off the alarm.

Select [Snooze](#) to stop the alarm for 5 minutes, after which it resumes.

If the alarm time is reached while the device is switched off, the device switches itself on and starts sounding the alarm tone. If you select [Stop](#), the device asks whether you want to activate the device for calls. Select [No](#) to switch off the device or [Yes](#) to make and receive calls. Do not select [Yes](#) when wireless phone use may cause interference or danger.

■ Calendar

Select [Menu](#) > [Organiser](#) > [Calendar](#). Press # in the month, week, or day views to automatically highlight the current date.

To create a new calendar entry, select [Options](#) > [New entry](#) and an entry type. [Anniversary](#) entries are repeated every year. [To-do](#) entries help you to keep a list of tasks that you need to do. Fill in the fields, and select [Done](#).

13. Applications

In [Applications](#) folder you can find the [My own](#) folder with the [GPS data](#) and [Landmarks](#) application, and the applications you have downloaded in your phone, a folder for games, and the [Download!](#) application.

■ Download!

[Download!](#) (network service) is a mobile content shop available on your device. You may be able to download some content free of charge.

With [Download!](#) you can discover, preview, buy, download, and upgrade content, services, and applications. The items are categorized under catalogs and folders provided by different service providers. The available content depends on your service provider.

Select [Menu](#) > [Applications](#) > [Download!](#)

[Download!](#) uses your network services to access the most up-to-date content. For information on additional items available through [Download!](#), contact your service provider, or the supplier or manufacturer of the item.

14. Settings

■ Voice commands

To select the functions to use by voice command, select **Menu** > **Settings** > **Voice comm.**. The voice commands for changing profiles are in the **Profiles** folder.

To activate a new voice command for an application, select **Options** > **New application** and the application. To play the activated voice command, select **Options** > **Playback**.

To use voice commands, see Voice dialing p. 21.

■ Call mailbox

Call mailbox is a network service. Contact your service provider for the call mailbox number.

To define the call mailbox number if no number is set, select **Menu** > **Settings** > **Call mailbox**, and when **Voice mailbox number:** is displayed, enter the voice mailbox number.

To change the call mailbox number, select **Menu** > **Settings** > **Call mailbox** > **Options** > **Change number**, and enter the number.

■ Phone settings

General

Select **Menu** > **Settings** > **Phone sett.** > **General** >

- **Personalisation**—to adjust the display, standby mode, tones, language, themes and voice command settings.
- **Date and time**—to set the time and date and the display format.
- **Enhancement**—to change the settings for an enhancement. Select an enhancement and the desired setting.
- **Security**—to change the phone and SIM card settings, such as PIN and lock codes; to view certificate details and check authenticity, and view and edit security modules.

When security features that restrict calls are in use (such as call barring, closed user group, and fixed dialing), calls may be possible to the official emergency number programmed into your device.

- **Factory settings**—to reset some of the settings to their original values. You need the lock code.
- **Positioning** (network service)—to enable a positioning method and to define a positioning server.

With the positioning service you can receive information from service providers about local issues such as weather and traffic conditions, based on the location of your device.

Phone

Select **Menu** > **Settings** > **Phone sett.** > **Phone** >

- **Call**—to adjust the call settings, such as **Send my caller ID** (network service) to display or hide your number; **Reject call with SMS** to enable rejecting phone calls with a text message; and **Speed dialling** to activate the speed dialing function
- **Call divert** (network service)—to divert your incoming calls to your call mailbox or another phone number
- **Call barring** (network service)—to restrict the calls that you make and receive with your phone

Call barring and call diverting cannot be active at the same time.

When calls are barred, calls may be possible to certain official emergency numbers.

- **Network**—to set the phone to select automatically or manually one of the available network operators (if allowed by the service provider), or to set the phone to indicate when it is used in a cellular network based on microcellular network (MCN) technology (network service).

Connection

Select **Menu** > **Settings** > **Phone sett.** > **Connection** >

- **Bluetooth**—to switch Bluetooth on or off, and edit Bluetooth settings. See Bluetooth connection p. 48.
- **USB**—to edit USB settings. See USB data cable p. 50.
- **Access points**—To establish a data connection, an access point is required. You can define access points for MMS to send and receive multimedia messages; for WAP to view web pages; and for internet access point (IAP) to send and receive e-mail.

Check with your service provider for the type of access point you need. For availability and subscription to data connection services, contact your service provider.

You may receive access point settings in a message from your service provider, or you may have preset access point settings in your phone.

- **Packet data**—to select the packet data connection settings. The packet data settings affect all access points using a packet data connection.
Select **Packet data connection > When available** to set the phone to register to the packet data network when you are in a network that supports packet data. If you select **When needed**, the phone uses a packet data connection only if you start an application or function that needs it.
Select **Access point** to set the access point name to use your phone as a modem with your computer.
- **Data call**—to set the online time for the data call connection. The data call settings affect all access points that use a GSM data call.
- **SIP settings**—to view and edit session initiation protocol (SIP) profiles.
- **Configurations**—to view and delete configurations. Certain functions, such as web browsing and multimedia messaging, may require configuration settings. You may receive the settings from your service provider. See Configuration settings p. 14.

Applications

To view and edit settings of applications installed to your phone, select **Menu > Settings > Phone sett. > Applications**.

■ Speech

In **Speech**, you can select the default language and voice used for reading messages and adjust the voice properties, such as rate and volume. Select **Menu > Settings > Speech**.

To view details of a voice, scroll right, scroll to the voice, and select **Options > Voice details**. To test a voice, scroll to the voice, and select **Options > Play voice**.

15. Connectivity

■ PC Suite

You can use your phone with a variety of PC connectivity and data communication applications. With PC Suite you can synchronize contacts, calendar and to-do notes and notes between your phone and a compatible PC.

You may find more information about PC Suite and the download link in the support area on the Nokia website, www.nokia.com/pcsuite.

■ Bluetooth connection

Bluetooth technology enables wireless connections between electronic devices within a maximum range of 10 meters (33 feet). A Bluetooth connection can be used to send images, videos, text, business cards, calendar notes, or to connect wirelessly to compatible devices using Bluetooth technology, such as computers.

This device is compliant with Bluetooth Specification 2.0 supporting the following profiles: Dial Up Networking, Serial Port, File Transfer, Handsfree, Headset, Basic Imaging, SIM Access, Generic Access, and Advanced Audio Distribution. To ensure interoperability between other devices supporting Bluetooth technology, use Nokia approved enhancements for this model. Check with the manufacturers of other devices to determine their compatibility with this device.

There may be restrictions on using Bluetooth technology in some locations. Check with your local authorities or service provider.

Features using Bluetooth technology, or allowing such features to run in the background while using other features, increase the demand on battery power and reduce the battery life.

Bluetooth connection settings

Select **Menu** > **Settings** > **Connectivity** > **Bluetooth**.

When you activate Bluetooth technology for the first time, you are asked to give a name to your phone.

Bluetooth—to switch Bluetooth on or off.

My phone's visibility—to allow your phone to be found by other Bluetooth devices at all times or for a defined time period. For security reasons it is advisable to use the **Hidden** setting whenever possible.


My phone's name—to define a name for your phone.

[Remote SIM mode](#) > [On](#)—to enable the usage of the SIM card of the phone by another device

When the wireless device is in the remote SIM mode, you can only use a compatible connected enhancement, such as a car kit, to make or receive calls. Your wireless device will not make any calls, except to the emergency numbers programmed into your device, while in this mode. To make calls from your device, you must first leave the remote SIM mode. If the device has been locked, enter the lock code to unlock it first.

Send data

There can be only one active Bluetooth connection at a time.

1. Open an application where the item you wish to send is saved.
2. Scroll to the item you want to send, and select [Options](#) > [Send](#) > [Via Bluetooth](#).
3. The phone starts to search for devices within range. Paired devices are shown with .

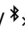
When searching for devices, some devices may show only the unique device addresses. To find out the unique address of your phone, enter the code [*#2820#](#) in the standby mode.

If you have searched for devices earlier, a list of the devices that were found previously is shown first. To start a new search, select [More devices](#).

4. Select the device with which you want to connect.
5. Pair the devices
 - If the other device requires pairing before data can be transmitted, a tone sounds and you are asked to enter a passcode.
 - Create your own passcode (1–16 digits) and agree with the owner of the other device to use the same code. You do not have to memorize the passcode.
 - After pairing, the device is saved to the [Paired devices](#) view.
6. When the connection has been successfully established, the note [Sending data](#) is displayed.

Data received using Bluetooth connection can be found in [Inbox](#) in [Messaging](#).


Paired devices view

Paired devices are indicated by  in the search result list. In the Bluetooth main view, scroll right to open a list of paired devices.

Do not accept Bluetooth connections from sources you do not trust.

To pair with a device, select **Options** > *New paired device*. Select the device with which to pair. Exchange passcodes.

To cancel pairing, scroll to the device whose pairing you want to cancel, and press the clear key.

To set a device to be authorized, scroll to the device, and select **Options** > *Set as authorised*. Connections between your phone and the authorized device can be made without your knowledge. Use this status only for your own devices to which others do not have access, for example, your PC or devices that belong to someone you trust.  is added next to authorized devices in the *Paired devices* view. If you select *Set as unauthorised*, each connection request from the device must be accepted separately.

Receive data

When you receive data using Bluetooth technology, a tone sounds, and you are asked if you want to accept the message. If you accept, the item is placed in *Inbox* in *Messaging*.

■ USB data cable

You can use the USB data cable to transfer data between the phone and a compatible PC. You can also use the USB data cable with Nokia PC Suite.

Select **Menu** > *Settings* > *Connectivity* > *USB*. To select the default USB connection mode, select *USB mode* and the desired mode. To have the device ask the purpose of the connection each time the cable is connected, select *Ask on connection* > *Yes*.

To use the phone with Nokia PC Suite, select *PC Suite*. To synchronize media files, such as music, with a compatible version of Windows Media Player, select *Media player*. To access files on the inserted memory card as a removable drive, select *Data transfer*.

After transferring data, ensure that it is safe to unplug the USB data cable from the PC.

■ Data transfer

With data transfer you can copy or synchronize contacts, calendar entries, and possibly other data, such as video clips and images, from a compatible phone using a Bluetooth or infrared connection. When both Bluetooth and infrared are available on both devices, it is preferable to use Bluetooth.

Depending on the other phone, synchronization may not be possible and data can be copied only once.

To transfer or synchronize data, do the following:

1. When using infrared, place the devices so that the infrared ports face each other, and activate infrared on both devices.

Select **Menu** > **Settings** > **Connectivity** > **Transfer**. If you have not used **Transfer** before, information about the application is displayed. Select **Continue** to start transferring data.

If you have used **Transfer**, select **Transfer data**.

2. Select whether to use Bluetooth or infrared for transferring the data. When using Bluetooth, the phones need to be paired in order to transfer data.

Depending on the type of the other phone, an application may be sent and installed on the other phone to enable the data transfer. Follow the instructions.

3. Select what content you want to be transferred to your phone.
4. Content is transferred to your phone. The transfer time depends on the amount of data. You can stop the transfer and continue later.

16. Data manager

■ Application manager

You can install two types of applications and software to your phone:



J2ME™ applications based on Java™ technology with the extension .jad or .jar. PersonalJava™ applications cannot be installed on your phone.



Other applications and software suitable for the Symbian operating system. The installation files have the .sis extension. Only install software specifically designed for your phone.

Installation files may be transferred to your phone from a compatible computer, downloaded during browsing, or sent to you in a multimedia message, as an e-mail attachment or by using Bluetooth. You can use Nokia Application Installer in Nokia PC Suite to install an application to your phone or a memory card.


To open *App. manager*, select **Menu** > *Settings* > *Data mgr.* > *App. mgr.*.



Important: Only install and use applications and other software from trusted sources, such as applications that are Symbian Signed or have passed the Java Verified™ testing.

Before installation, in *App. manager*, scroll to the installation file, and select **Options** > *View details* to view information such as the application type, version number, and the supplier or manufacturer of the application.

The .jar file is required for installing Java applications. If it is missing, the phone may ask you to download it.

To install an application or software package, scroll to an installation file, and select **Options** > *Install*. Applications on the memory card are indicated with .

To remove an application, in *App. manager*, scroll to the software package, and select **Options** > *Remove*.

For application manager settings, select **Options** > *Settings*.

■ Memory card

Keep all memory cards out of the reach of small children.

Select **Menu** > *Settings* > *Data mgr.* > *Memory*.

To format a new memory card, select **Options** > *Format memory card* > *Yes*. Enter a name for the memory card.

To back up information from phone memory to the memory card, select **Options** > *Back up phone memory*.

To restore information from the memory card to the phone memory, select **Options** > *Restore from card*. You can only back up the phone memory and restore it to the same phone.

To set a password (up to 8 characters) to help prevent unauthorized use, select **Options** > *Set password*. To unlock the card, select **Options** > *Unlock memory card*.

For details on inserting a memory card into the phone, see Get started p. 10.

■ Activation keys

Digital rights management

Content owners may use different types of digital rights management (DRM) technologies to protect their intellectual property, including copyrights. This device uses various types of DRM software to access DRM-protected content. With this device you can access content protected with WMDRM 10, OMA DRM 2.0 and OMA DRM 1.0. If certain DRM software fails to protect the content, content owners may ask that such DRM software's ability to access new DRM-protected content be revoked. Revocation may also prevent renewal of such DRM-protected content already in your device. Revocation of such DRM software does not affect the use of content protected with other types of DRM or the use of non-DRM-protected content.


Digital rights management (DRM) protected content comes with an associated activation key that defines your rights to use the content.

If your device has OMA DRM protected content, to back up both the activation keys and the content, use the backup feature of Nokia PC Suite. Other transfer methods may not transfer the activation keys which need to be restored with the content for you to be able to continue the use of OMA DRM protected content after the device memory is formatted. You may also need to restore the activation keys in case the files on your device get corrupted.

If your device has WMDRM protected content, both the activation keys and the content will be lost if the device memory is formatted. You may also lose the activation keys and the content in case the files on your device get corrupted. Losing the activation keys or the content may limit your ability to use the same content on your device again. For more information, contact your service provider.

Some activation keys may be connected to a specific SIM card, and the protected content can be accessed only if the SIM card is inserted in the device.

Select **Menu** > **Settings** > **Data mgr.** > **Actv. keys** to view the digital rights activation keys saved in your phone.

To view valid keys (🔑) that are connected to one or more media files, select **Valid keys**. Group keys, which contain several keys, are indicated with . To view the keys contained in the group key, select the group key.

To view invalid keys (🔒) with which the time period for using the file is exceeded, select **Invalid keys**. To buy more usage time or extend the usage period for a media file, select an invalid key and **Options** > **Get new key**. It may not be possible to update activation keys if web service message reception is disabled. To enable the service message reception, select **Menu** > **Messaging** > **Options** > **Settings** > **Service message** > **Service messages** > **On**.

To view activation keys that are not in use, select *Not in use*. Unused activation keys have no media files connected to them.

To view detailed information such as the validity status and the ability to send the file, scroll to an activation key, and select it.

17. Battery information

■ Charging and discharging

Your device is powered by a rechargeable battery. The battery can be charged and discharged hundreds of times, but it will eventually wear out. When the talk and standby times are noticeably shorter than normal, replace the battery. Use only Nokia approved batteries, and recharge your battery only with Nokia approved chargers designated for this device.

If a replacement battery is being used for the first time or if the battery has not been used for a prolonged period, it may be necessary to connect the charger, then disconnect and reconnect it to begin charging the battery.

Unplug the charger from the electrical plug and the device when not in use. Do not leave a fully charged battery connected to a charger, since overcharging may shorten its lifetime. If left unused, a fully charged battery will lose its charge over time.

If the battery is completely discharged, it may take several minutes before the charging indicator appears on the display or before any calls can be made.

Use the battery only for its intended purpose. Never use any charger or battery that is damaged.

Do not short-circuit the battery. Accidental short-circuiting can occur when a metallic object such as a coin, clip, or pen causes direct connection of the positive (+) and negative (–) terminals of the battery. (These look like metal strips on the battery.) This might happen, for example, when you carry a spare battery in your pocket or purse. Short-circuiting the terminals may damage the battery or the connecting object.

Leaving the battery in hot or cold places, such as in a closed car in summer or winter conditions, will reduce the capacity and lifetime of the battery. Always try to keep the battery between 15°C and 25°C (59°F and 77°F). A device with a hot or cold battery may not work temporarily, even when the battery is fully charged. Battery performance is particularly limited in temperatures well below freezing.

Do not dispose of batteries in a fire as they may explode. Batteries may also explode if damaged. Dispose of batteries according to local regulations. Please recycle when possible. Do not dispose as household waste.

Do not dismantle or shred cells or batteries. In the event of a battery leak, do not allow the liquid to come in contact with the skin or eyes. In the event of such a leak, flush your skin or eyes immediately with water, or seek medical help.

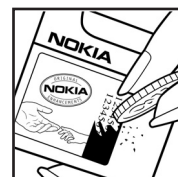
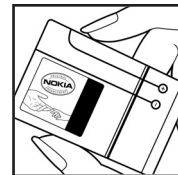
■ Nokia battery authentication guidelines

Always use original Nokia batteries for your safety. To check that you are getting an original Nokia battery, purchase it from an authorized Nokia dealer, look for the Nokia Original Enhancements logo on the packaging, and inspect the hologram label using the following steps:

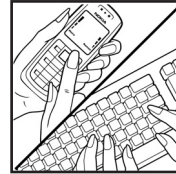
Successful completion of the four steps is not a total assurance of the authenticity of the battery. If you have any reason to believe that your battery is not an authentic, original Nokia battery, you should refrain from using it, and take it to the nearest authorized Nokia service point or dealer for assistance. Your authorized Nokia service point or dealer will inspect the battery for authenticity. If authenticity cannot be verified, return the battery to the place of purchase.

Authenticate hologram

1. When looking at the hologram on the label, you should see the Nokia connecting hands symbol from one angle and the Nokia Original Enhancements logo when looking from another angle.
2. When you angle the hologram left, right, down, and up, you should see 1, 2, 3, and 4 dots on each side respectively.
3. Scratch the side of the label to reveal a 20-digit code, for example, 12345678919876543210. Turn the battery so that the numbers are facing upwards. The 20-digit code reads starting from the number at the top row followed by the bottom row.



4. Confirm that the 20-digit code is valid by following the instructions at www.nokia.com/batterycheck.



What if your battery is not authentic?

If you cannot confirm that your Nokia battery with the hologram on the label is an authentic Nokia battery, please do not use the battery. Take it to the nearest authorized Nokia service point or dealer for assistance. The use of a battery that is not approved by the manufacturer may be dangerous and may result in poor performance and damage to your device and its enhancements. It may also invalidate any approval or warranty applying to the device.

To find out more about original Nokia batteries, visit www.nokia.com/battery.

Care and maintenance

Your device is a product of superior design and craftsmanship and should be treated with care. The following suggestions will help you protect your warranty coverage.

- Keep the device dry. Precipitation, humidity, and all types of liquids or moisture can contain minerals that will corrode electronic circuits. If your device does get wet, remove the battery, and allow the device to dry completely before replacing it.
- Do not use or store the device in dusty, dirty areas. Its moving parts and electronic components can be damaged.
- Do not store the device in hot areas. High temperatures can shorten the life of electronic devices, damage batteries, and warp or melt certain plastics.
- Do not store the device in cold areas. When the device returns to its normal temperature, moisture can form inside the device and damage electronic circuit boards.
- Do not attempt to open the device other than as instructed in this guide.
- Do not drop, knock, or shake the device. Rough handling can break internal circuit boards and fine mechanics.
- Do not use harsh chemicals, cleaning solvents, or strong detergents to clean the device.
- Do not paint the device. Paint can clog the moving parts and prevent proper operation.
- Use a soft, clean, dry cloth to clean any lenses, such as camera, proximity sensor, and light sensor lenses.
- Use only the supplied or an approved replacement antenna. Unauthorized antennas, modifications, or attachments could damage the device and may violate regulations governing radio devices.
- Use chargers indoors.
- Always create a backup of data you want to keep, such as contacts and calendar notes.
- To reset the device from time to time for optimum performance, power off the device and remove the battery.

These suggestions apply equally to your device, battery, charger, or any enhancement. If any device is not working properly, take it to the nearest authorized service facility for service.



Disposal

The crossed-out wheeled-bin symbol on your product, literature, or packaging reminds you that in the European Union all electrical and electronic products, batteries, and accumulators must be taken to separate collection at the end of their working life. Do not dispose of these products as unsorted municipal waste.

Return the products to collection to prevent possible harm to the environment or human health from uncontrolled waste disposal and to promote the sustainable reuse of material resources. Collection information is available from the product retailer, local waste authorities, national producer responsibility organizations, or your local Nokia representative. For more information, see product Eco-Declaration or country-specific information at www.nokia.com.

DRAFT

Additional safety information

■ Small children

Your device and its enhancements may contain small parts. Keep them out of the reach of small children.

■ Operating environment

This device meets RF exposure guidelines when used either in the normal use position against the ear or when positioned at least 2.2 centimeters (7/8 inches) away from the body. When a carry case, belt clip, or holder is used for body-worn operation, it should not contain metal and should position the device the above-stated distance from your body. To transmit data files or messages, this device requires a quality connection to the network. In some cases, transmission of data files or messages may be delayed until such a connection is available. Ensure the above separation distance instructions are followed until the transmission is completed.

Parts of the device are magnetic. Metallic materials may be attracted to the device. Do not place credit cards or other magnetic storage media near the device, because information stored on them may be erased.

■ Medical devices

Operation of any radio transmitting equipment, including wireless phones, may interfere with the functionality of inadequately protected medical devices. Consult a physician or the manufacturer of the medical device to determine if they are adequately shielded from external RF energy or if you have any questions. Switch off your device in health care facilities when any regulations posted in these areas instruct you to do so. Hospitals or health care facilities may be using equipment that could be sensitive to external RF energy.

Implanted medical devices

Manufacturers of medical devices recommend that a minimum separation of 15.3 centimeters (6 inches) should be maintained between a wireless device and an implanted medical device, such as a pacemaker or implanted cardioverter defibrillator, to avoid potential interference with the medical device. Persons who have such devices should:

- Always keep the wireless device more than 15.3 centimeters (6 inches) from the medical device when the wireless device is turned on.
- Not carry the wireless device in a breast pocket.
- Hold the wireless device to the ear opposite the medical device to minimize the potential for interference.
- Turn the wireless device off immediately if there is any reason to suspect that interference is taking place.

- Read and follow the directions from the manufacturer of their implanted medical device.

If you have any questions about using your wireless device with an implanted medical device, consult your health care provider.

Hearing aids

Some digital wireless devices may interfere with some hearing aids. If interference occurs, consult your service provider.

■ Vehicles

RF signals may affect improperly installed or inadequately shielded electronic systems in motor vehicles such as electronic fuel injection systems, electronic antiskid (antilock) braking systems, electronic speed control systems, and air bag systems. For more information, check with the manufacturer, or its representative, of your vehicle or any equipment that has been added.

Only qualified personnel should service the device or install the device in a vehicle. Faulty installation or service may be dangerous and may invalidate any warranty that may apply to the device. Check regularly that all wireless device equipment in your vehicle is mounted and operating properly. Do not store or carry flammable liquids, gases, or explosive materials in the same compartment as the device, its parts, or enhancements. For vehicles equipped with an air bag, remember that air bags inflate with great force. Do not place objects, including installed or portable wireless equipment in the area over the air bag or in the air bag deployment area. If in-vehicle wireless equipment is improperly installed and the air bag inflates, serious injury could result.

Using your device while flying in aircraft is prohibited. Switch off your device before boarding an aircraft. The use of wireless teledevices in an aircraft may be dangerous to the operation of the aircraft, disrupt the wireless telephone network, and may be illegal.

■ Potentially explosive environments

Switch off your device when in any area with a potentially explosive atmosphere, and obey all signs and instructions. Potentially explosive atmospheres include areas where you would normally be advised to turn off your vehicle engine. Sparks in such areas could cause an explosion or fire resulting in bodily injury or even death. Switch off the device at refueling points such as near gas pumps at service stations. Observe restrictions on the use of radio equipment in fuel depots, storage, and distribution areas; chemical plants; or where blasting operations are in progress. Areas with a potentially explosive atmosphere are often, but not always, clearly marked. They include below deck on boats, chemical transfer or storage facilities, vehicles using liquefied petroleum gas (such as propane or butane), and areas where the air contains chemicals or particles such as grain, dust, or metal powders.

■ Emergency calls



Important: Wireless phones, including this device, operate using radio signals, wireless networks, landline networks, and user-programmed functions. Because of this, connections in all conditions cannot be guaranteed. You should never rely solely on any wireless device for essential communications like medical emergencies.

To make an emergency call:

1. If the device is not on, switch it on. Check for adequate signal strength.
Some networks may require that a valid SIM card is properly inserted in the device.
2. Press the end key as many times as needed to clear the display and ready the device for calls.
3. Enter the official emergency number for your present location. Emergency numbers vary by location.
4. Press the call key.

If certain features are in use, you may first need to turn those features off before you can make an emergency call. If the device is in the offline profile mode, you may need to change the profile to activate the phone function before you can make an emergency call. Consult this guide or your service provider for more information.

When making an emergency call, give all the necessary information as accurately as possible. Your wireless device may be the only means of communication at the scene of an accident. Do not end the call until given permission to do so.

■ Certification information (SAR)

THIS MOBILE DEVICE MEETS GUIDELINES FOR EXPOSURE TO RADIO WAVES.

Your mobile device is a radio transmitter and receiver. It is designed not to exceed the limits for exposure to radio waves recommended by international guidelines. These guidelines were developed by the independent scientific organization ICNIRP and include safety margins designed to assure the protection of all persons, regardless of age and health.

The exposure guidelines for mobile devices employ a unit of measurement known as the Specific Absorption Rate or SAR. The SAR limit stated in the ICNIRP guidelines is 2.0 watts/kilogram (W/kg) averaged over 10 grams of tissue. Tests for SAR are conducted using standard operating positions with the device transmitting at its highest certified power level in all tested frequency bands. The actual SAR level of an operating device can be below the maximum value because the device is designed to use only the power required to reach the network. That amount changes depending on a number of factors such as how close you are to a network base station. The highest SAR value under the ICNIRP guidelines for use of the device at the ear is 1.24 W/kg.

Use of device accessories and enhancements may result in different SAR values. SAR values may vary depending on national reporting and testing requirements and the network band. Additional SAR information may be provided under product information at www.nokia.com. Your mobile device is also designed to meet the requirements for exposure to radio waves established by the Federal Communications Commission (USA) and Industry Canada. These requirements set a SAR limit of 1.6 W/kg averaged over one gram of tissue. The highest SAR value reported under this standard during product certification for use at the ear is 1.02 W/kg and when properly worn on the body is 1.33 W/kg. Information about this device model can be found at <http://www.fcc.gov/oet/fccid> by searching the equipment authorization system using FCC ID: LJPRM-302.

DRAFT

Index

Numerics

3-D tones 39

À

access codes

- barring password 9
- lock code 9, 13
- module PIN 9
- PIN 9, 13
- PIN2 9
- PUK 9
- PUK2 9
- signing PIN 9

access points 46

activation keys 53

active standby 17

alarm clock. See clock.

application manager 51

applications 51

B

battery

- charging 13

Bluetooth

- connection settings 48
- paired devices 50
- receiving data 50
- sending data 49

browser. See web.

C

cache 43

calendar 44

call register. See log.

calls

- answering 22
- barring 46
- diverting 46
- ending 21
- international 21
- making 21
- rejecting 22
- rejecting with SMS 22
- swapping 22

voice dial 21

voice mailbox 21

waiting 22

camera 36

camera mode 16

clock 43

connectivity 48

contacts 28

copyright protection. See activation keys.

D

data cable 50

data connection indicators 18

data transfer 51

digital rights management. See activation keys.

downloading 42

E

editing videos 30

e-mail

- mailbox 26

e-mail messages

- deleting 26

G

gallery 29

- transferring videos 30

H

help 19

I

indicators 18

K

keyguard. See keypad lock.

keypad lock 20

L

listening to music 31

log 22

M

- mechanical modes 16
- memory card 52
- menu 19
- message settings
 - e-mail 27
 - multimedia messages 27
 - text messages 27
- messages
 - audio 25
 - listening to 27
 - outbox 25
 - receiving 24
 - sending 25
 - SIM messages 27
 - writing 25
- mobile browser. See web.
- movies, muvees
 - custom muvees 37
 - quick muvees 36
- music mode 16
- music player
 - downloading music 33
 - music shop 33
 - playlists 32
 - transferring music 34
- music. See music player.

P

- phone mode 16
- phonebook. See contacts.
- profiles 39

S

- services. See web.
- settings
 - connection 46
 - data call 47
 - packet data 47
 - phone 45
 - speech 47

- SIM card
 - using phone without a SIM card 18
- songs
 - transferring 34
- standby mode 17

T

- text input 24
 - copying text 24
 - predictive 23
- themes 38
 - audio theme 39
- transferring music 34
- transferring videos 30

U

- USB. See data cable.

V

- video view mode 17
- videos
 - transferring 30
- Visual Radio 35
- voice commands 45
- voice dialing 21
- voice mailbox 45
- volume 19

W

- web
 - browser settings 43
 - browsing 41
 - connecting 40
 - connection security 41
 - disconnecting 43
 - saving a page 42
 - settings 40
 - viewing a saved page 42
 - viewing bookmarks 40
- writing text. See text input.