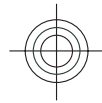
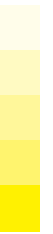
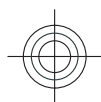


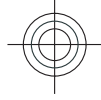


Nokia N8-00 User Guide

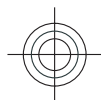
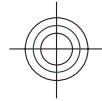
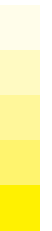


777777
Issue 1





Contents		Social networks	14
		About Communities	14
Safety	3	Take a picture	15
About this user guide	4	Upload a picture or video to a service	15
Use the in-device user guide	4	View your pictures and videos on a TV	16
Get started	4	Connect a USB mass storage device	16
Keys and parts	4	Back up files	16
Volume and loudspeaker control	5	Find more help	17
Lock or unlock the keys and screen	5	Support	17
Insert or remove the SIM card	6	Keep your device software and applications up to date	17
Insert or remove the memory card	7	Accessibility solutions	18
Charging	8	Access codes	18
If your device stops responding	9	Green tips	19
Switch the device on	9	Save energy	19
Nokia account and Ovi services	9	Recycle	19
Copy contacts or pictures from your old device	9	Product and safety information	19
Device set-up	10		
Install Ovi Suite on your PC	10		
Touch screen actions	11		
Interactive home screen elements	12		
Call a phone number	12		
Save phone numbers and mail addresses	13		
Send a message	13		
Personalisation	13		
Personalise your tones	13		
Change your theme	13		
Switch between home screens	14		
Personalise the home screen	14		
Add items to the home screen	14		





Safety

Read these simple guidelines. Not following them may be dangerous or illegal. Read the complete user guide for further information.

SWITCH OFF IN RESTRICTED AREAS



Switch the device off when mobile phone use is not allowed or when it may cause interference or danger, for example, in aircraft, near medical equipment, fuel, chemicals, or blasting areas.

ROAD SAFETY COMES FIRST



Obey all local laws. Always keep your hands free to operate the vehicle while driving. Your first consideration while driving should be road safety.

INTERFERENCE



All wireless devices may be susceptible to interference, which could affect performance.

QUALIFIED SERVICE



Only qualified personnel may install or repair this product.

BATTERIES AND OTHER ACCESSORIES



Use only chargers and other accessories approved by Nokia for use with this device. Do not connect incompatible products.

KEEP YOUR DEVICE DRY



Your device is not water-resistant. Keep it dry.

GLASS PARTS

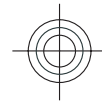


The front cover of the device is made of glass. This glass can break if the device is dropped on a hard surface or receives a substantial impact. If the glass breaks, do not touch the glass parts of the device or attempt to remove the broken glass from the device. Stop using the device until the glass is replaced by qualified service personnel.

PROTECT YOUR HEARING



Listen to a headset at a moderate level, and do not hold the device near your ear when the loudspeaker is in use.



About this user guide

This short user guide helps you get started with your device. With a short printed user guide, Nokia helps save energy and paper.

Your device also has a complete user guide, so that you can get more support when you need it. To open the complete user guide, select **Menu > Applications > User guide** in your device.

For even more support information, go to www.nokia.com/support, or using a mobile device, www.nokia.mobi/support.

Use the in-device user guide

Select **Menu > Applications > User guide**.

Open the user guide from an application



Select **Options > User guide**. This is not available for every application.

Search the user guide

When the user guide is open, select **Options > Search**, and enter a letter or a word in the search field.

Switch between the user guide and an application

Select **Options > Open applications** and the application.

Links to related topics may be at the end of instructions.  indicates a link to a related topic, and  indicates a link to a web page.

Get started

Keys and parts

Top



- 1 Nokia AV connector (3.5 mm)
- 2 HDMI™ connector
- 3 Power key 

Front



- 1 Earpiece
- 2 Menu key
- 3 Microphone
- 4 Secondary camera lens



Back



- 1 Camera flash
- 2 Camera lens
- 3 Loudspeaker
- 4 Microphone

Bottom



- 1 Charging connector
- 2 Wrist strap

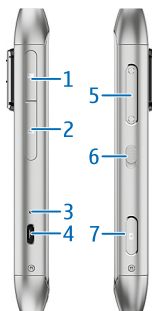
Touch screen

To control your device, lightly touch the screen with your fingertips. The screen does not respond when you use your fingernails.

If your fingertips are cold, the screen may not respond to your touch.

To avoid scratching the touch screen, never use a pen, pencil, or other sharp object to write on the touch screen.

Sides



- 1 Memory card slot
- 2 SIM card slot
- 3 Charging indicator light
- 4 Micro USB connector
- 5 Volume/Zoom key
- 6 Lock switch
- 7 Camera key 

Volume and loudspeaker control

Adjust the volume of a phone call, song, or video

Use the volume keys.

The built-in loudspeaker allows you to speak and listen from a short distance without having to hold the device to your ear.

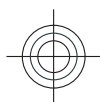
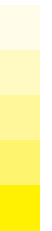
Activate or deactivate the loudspeaker during a call

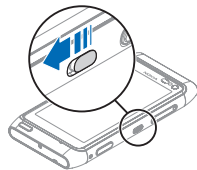
Select Loudspeaker or Activate handset.

Lock or unlock the keys and screen

You can lock the keys and screen to avoid accidental calls or keypresses.

Slide the lock switch.



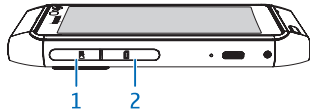


Set the keys and screen to lock automatically

- 1 Select **Menu > Settings and Phone > Display > Screen/keylock time-out**.
- 2 Define the length of time after which the touch screen and keys are locked automatically.

Insert or remove the SIM card

Do not attach any stickers to your SIM card.

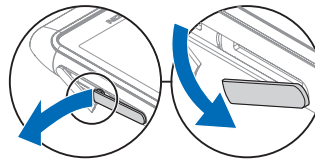


- 1 Memory card slot cover
- 2 SIM card slot cover

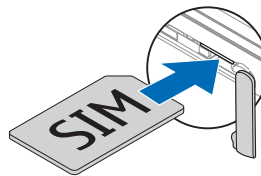
Insert the SIM card

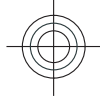
- 1 Use your fingernail to open the cover of the memory card slot.

- 2 Open the cover of the SIM card slot.



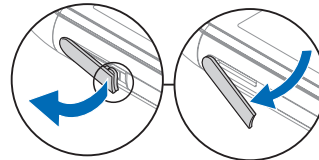
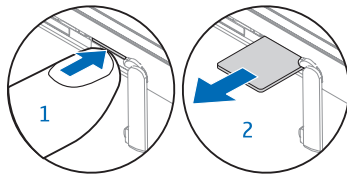
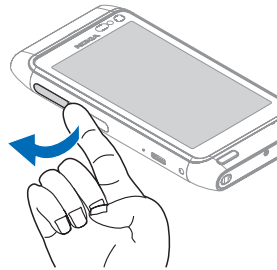
- 3 Insert the SIM card. Push the card in, until you hear a click. Make sure the contact area of the card is facing down.





Remove the SIM card

- 1 Use your fingernail to open the cover of the memory card slot.
- 2 Open the cover of the SIM card slot, and push the card in, until you hear a click.
- 3 Pull the card out.



Insert or remove the memory card

Use only compatible memory cards approved by Nokia for use with this device. Incompatible cards may damage the card and the device and corrupt data stored on the card.

- 2 Make sure the contact area of the memory card is facing down. Push the card in, until you hear a click.



Memory cards are sold separately.

Do not attach any stickers to your memory card.

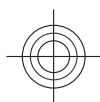
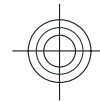
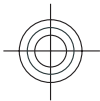


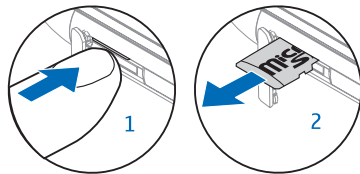
Insert the memory card

- 1 Use your fingernail to open the cover of the memory card slot.

Remove the memory card

- 1 Use your fingernail to open the cover of the memory card slot.
- 2 Push the card in, until you hear a click.
- 3 Pull the card out.





Charging About the battery

Your device has an internal, nonremovable, rechargeable battery. Use only Nokia approved chargers designated for this device. You can also use a compatible USB data cable to charge your device.

Do not attempt to remove the battery from the device. Take the device to the nearest authorised service facility for replacement of the battery.

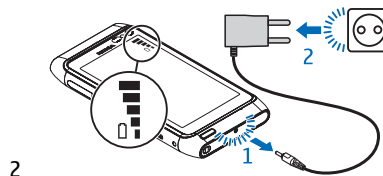
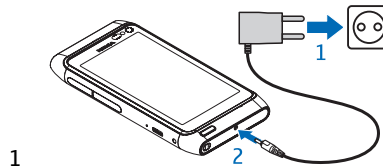
Authorised retail points may also offer a battery replacement service.

When your device is low on power, it goes into power save mode. To deactivate power save mode, press **ⓘ**, and select **Deactivate power saving**. When power save mode is activated, you may not be able to modify the settings of certain applications.

Charge the battery

Your battery has been partially charged at the factory, but you may need to recharge it before you can switch on your device for the first time.

If the device indicates a low charge, do the following:

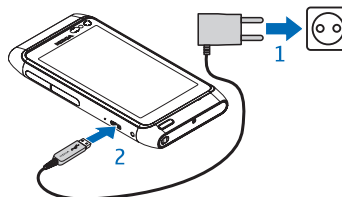


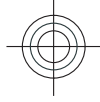
You do not need to charge the battery for a specific length of time, and you can use the device while it is charging.

If the battery is completely discharged, it may take several minutes before the charging indicator appears on the display or before any calls can be made.

If the battery has not been used for a long time, to begin charging, you may need to connect the charger, then disconnect and reconnect it.

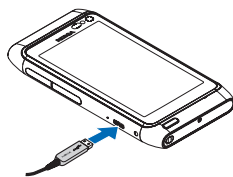
Tip: You can also use a compatible USB charger to charge your battery.





Charge the battery with a USB data cable

Battery low, but you don't have a charger with you? To charge the battery, you can use a USB data cable to connect your device to a compatible device, such as a PC.



When the battery is charging, the charging indicator light next to the USB connector is lit. When the battery charge is low, the charging indicator light flashes. It may take a while for charging to start.

Charging with the USB data cable is slower than charging with the charger. Charging with the USB data cable may not work if you use a non-powered USB hub.

You can transfer data while charging.

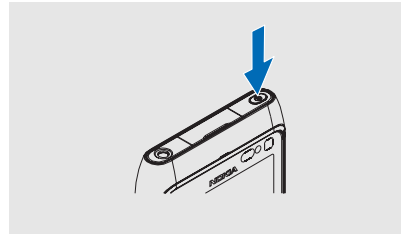
If your device stops responding

If your device stops responding, to reset your device, press and hold **⓪** for about 8 seconds. When the device switches off, it vibrates three times. To switch your device on again, press **⓪**.

No content, such as contacts or messages, is deleted.

Switch the device on

Press and hold **⓪**.



Switch the device off

Press and hold **⓪**.

Nokia account and Ovi services

When you switch on your device for the first time, you can create a Nokia account, so you can access Ovi services.

With Ovi services, you can, for example:

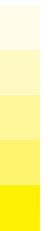
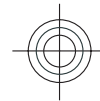
- Download mobile games, applications, videos, pictures, themes, and ringing tones from Ovi Store
- Synchronise your favourite locations from your device to the Ovi Maps internet service

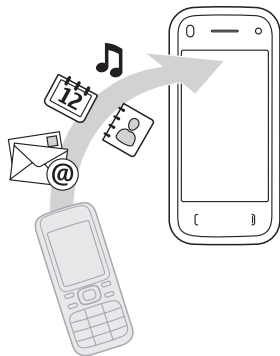
To learn more about Ovi services, go to www.ovi.com.

Copy contacts or pictures from your old device

Use the Phone switch application to copy, for example, contacts, calendar entries, and pictures from your previous compatible Nokia device, free of charge.

Select **Menu > Applications > Tools > Phone setup and Data transfer**.






If your old Nokia device does not have the Phone switch application, your new device sends it in a message. Open the message in the old device, and follow the instructions.

- 1 Select the device you want to connect to, and pair the devices. Bluetooth needs to be activated.
- 2 If the other device requires a passcode, enter the passcode. The passcode, which you can define yourself, must be entered in both devices. The passcode in some devices is fixed. For details, see the user guide of the device.
The passcode is valid only for the current connection.
- 3 Select the content and **OK**.

Device set-up

To define some basic settings for your device, select the Phone set-up widget

 which is on one of your home screens. To switch between home screens, swipe left or right. With the Phone set-up widget, you can do the following:

- Copy contacts, pictures, and other content from your previous Nokia device
- Personalise your device, by changing the ringing tone and visual theme
- Set up mail
- Update your device software

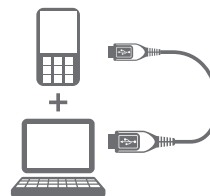
To define the settings later, you can also select **Menu > Applications > Tools > Phone setup**.

Install Ovi Suite on your PC

With the Nokia Ovi Suite PC application, you can manage content on your device, and keep it in sync with your computer.

You can download the latest version of Ovi Suite in www.ovi.com/suite. To install Ovi Suite from your device, do the following:

- 1 Use a compatible USB data cable to connect your device to your computer. If you are using Windows XP or Windows Vista, change the USB mode of your device to Mass storage. Your device's mass memory and memory card appear as removable disks on your PC.



- 2 On your computer, select **Install Nokia Ovi Suite**.



To open the installation file manually, select **Open folder to view files**, and double-click **Install_Nokia_Ovi_Suite.exe**.



- 3 Follow the instructions.
- 4 When you finish the installation procedure, change the USB mode of your device to Media transfer.

To learn more about Ovi Suite, go to www.ovi.com.

Touch screen actions

To interact with the user interface, tap or tap and hold the touch screen.

Open an application or other screen element

Tap the application or element.

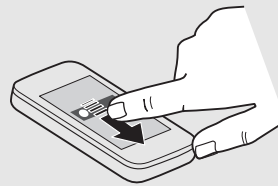
View item-specific options

Tap and hold the item. A pop-up menu with available options opens. For example, to send an image or delete an alarm, tap and hold the image or alarm, and from the pop-up menu, select the appropriate option.

If you tap and hold the home screen, editing mode is activated.



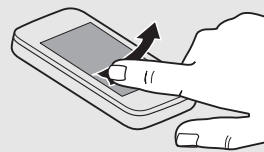
Drag an item



Tap and hold the item, and slide your finger across the screen. The item follows your finger.

You can drag items in the home screen or the main menu, when you have activated editing mode.

Swipe



Place a finger on the screen, and steadily slide your finger in the desired direction.

For example, when you are viewing a picture, to view the next picture, swipe left.

Scroll in a list or menu

If the list has a scroll bar, drag the scroll bar slider. Or place your finger on the screen, slide it quickly up or down the screen, then lift your finger. The content of the screen continues scrolling with the speed and direction it had at the moment of release. To select an item from a scrolling list and to stop the movement, tap the item.



Zoom in



Place two fingers on an item, such as a picture or web page, and slide your fingers apart.

Zoom out

Place two fingers on the item, and slide your fingers together.

Interactive home screen elements

The home screen elements are interactive. For example, you can change the date and time, set alarms, write calendar entries, or edit the profiles directly in the home screen.



Open the clock application

Select the time indicator (1).

Change or edit profiles

Select the profile name (2).


Open calendar

Select the date (3).

View available WLANs or missed events

Select the top right corner (4).

Change the connectivity settings

Select the top right corner (4) and .



Call a phone number

- 1 In the home screen, select **Call** to open the dialler, and enter the phone number.

To enter the + character, used for international calls, select * twice. The + character as a replacement for the



international access code may not work in all regions. In this case, enter the international access code directly.


- 2 To make the call, select .
- 3 To end the call, select .

Save phone numbers and mail addresses


You can save your friends' phone numbers, mail addresses, and other information to your contacts list.

Select **Menu** > **Contacts**.

Add a contact to the contacts list

- 1 Select **Options** > **New contact**.
- 2 Select a field, and enter the details. To close the text input, select .

Edit contact information

- 1 Select a contact.
- 2 Open the contact card tab .
- 3 Select a contact detail.

Add details about a contact

Select a contact and **Options** > **Edit** > **Options** > **Add detail**.



Send a message

With text and multimedia messages, you can quickly contact your friends and family. In a multimedia message, you can attach pictures, videos, and sound clips that you want to share.

Select **Menu** > **Messaging**.

- 1 Select **New message**.
- 2 To select recipients from the contacts list, select the **To** title. To enter the

recipient's phone number manually, enter the number in the **To** field.

- 3 To add an attachment, select .
- 4 Select .

Sending a message with an attachment may be more expensive than sending a normal text message. For more information, contact your service provider.

If the item you inserted in a multimedia message is too large for the network, the device may automatically reduce the size.

Only compatible devices can receive and display multimedia messages. Messages may look different in different devices.

Personalisation


Personalise your tones

You can personalise the ringing, key, and warning tones for each profile.

- 1 In the home screen, select the profile.
- 2 Select **Edit active profile**.
- 3 Select **Ringtone** or **Key tones**.

Tip: Download ringing tones from Ovi Store. For details, go to www.ovi.com.

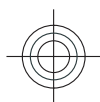
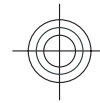
Change your theme

 With themes, you can change the colours and look of your display.

Select **Menu** > **Settings** > **Themes**.

Select **General** and a theme.

Some themes include background animation effects. To save battery power, select **General** > **Options** > **Theme effects**.






Tip: Download themes from Ovi Store. To learn more about Ovi Store, go to www.ovi.com.

Switch between home screens

You can have more than one home screen.

To switch to another home screen, swipe left or right.



 indicates which home screen you are in.

Personalise the home screen

You can change wallpaper, and rearrange home screen items.

Rearrange items in the home screen

- 1 Tap and hold the home screen.
- 2 Drag and drop items to a new location.

Change the wallpaper

- 1 Tap and hold the home screen.
- 2 Select **Options** > **Change wallpaper**.
- 3 Select the desired picture.

Tip: Download more background images from Ovi Store. For details, go to www.ovi.com.

Add items to the home screen


You can create shortcuts to your most used features and add mini-applications (widgets) that display helpful information.

Add a shortcut to the home screen

You can add shortcuts to applications, web bookmarks, or actions, such as writing a message.

- 1 Tap and hold the home screen.
- 2 Select the shortcut widget and **Settings**.
- 3 Go to the shortcut you want to define, and select **#Application** or **#Bookmark** and the desired item.


Add a widget to the home screen

- 1 Tap and hold the home screen.
- 2 Select  and the desired widget from the list.

Tip: To download more widgets, select **Store**.

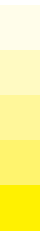
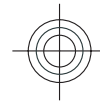
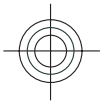
Social networks

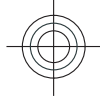
About Communities

 Select **Menu** > **Applications** > **Communities** and a service, and sign in.

With the Communities application, you can enhance your social networking experience. When signed into a social networking service with the Communities application, you can do the following:

- Instantly share pictures you take with the camera
- Call or send messages to your online friends
- Share your location with Ovi Maps






- Add events from the service calendar to your device calendar

Only those features that are supported by the service are available.


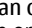


With the Communities widget, you can see your online friends' latest status updates directly in the home screen.

Using social networking services requires network support. This may involve the transmission of large amounts of data and related data traffic costs. For information about data transmission charges, contact your service provider.

Take a picture

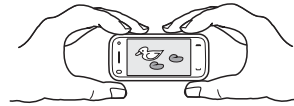
Press and hold .

Your device camera has the full focus feature. With this feature, you can take pictures where objects both in the foreground and background are in focus.

- 1 Press  halfway down to lock the focus on an object (not available in landscape or sport scene modes). A green locked focus indicator is displayed. If the focus was not locked, a red focus indicator is displayed. Release , and press it halfway down again. You can also take a picture without locking the focus.
- 2 To activate the face tracking feature, select  > **Face detect..** The face tracker detects and draws white rectangles around faces, even when they are moving. The priority face has a yellow rectangle drawn around it. To focus on the priority face, press  halfway down. A green locked focus indicator is displayed.

- 3 Press . Do not move the device before the picture is saved and the final picture displayed.

To change the default memory to save pictures to, select **Options > Settings > Memory in use** and the desired memory location.




Upload a picture or video to a service


With the Communities application, you can upload pictures and videos to social networking services.

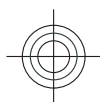
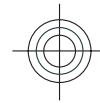
Select **Menu > Applications > Communities** and a service, and sign in.

Upload a picture or video

- 1 Select .
- 2 Select whether to upload a picture or a video.
- 3 To mark the item to upload, select the item.
- 4 If uploading a single picture, you can add a caption and a tag with a comment to a particular section of the picture.

Take a picture and upload it

- 1 Select .
- 2 Select the option for uploading a picture from the camera.
- 3 Take a picture.
- 4 Add a caption and a tag with a comment to a particular section of the picture.



To upload a picture or video, the feature needs to be supported by the service.

View your pictures and videos on a TV

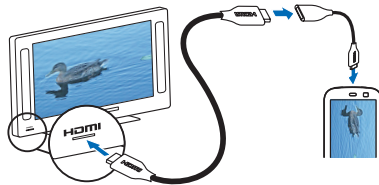
You can use a compatible HDMI adapter and a standard HDMI cable (cable sold separately) to connect your device to a TV or compatible home theatre. Pictures and videos retain the original video and audio quality, even supporting surround sound.

- 1 Connect an HDMI adapter to the HDMI connector of your device.



HDMI adapter

- 2 Connect an HDMI cable to the adapter, and then to the HDMI connector of a TV. You may need to manually select the HDMI input on the TV.



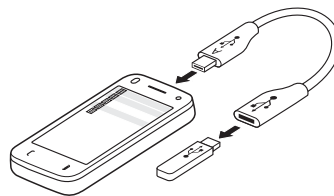
- 3 Select a picture or video to view on the TV.

Connect a USB mass storage device

With the USB On-The-Go (OTG) adapter, you can connect your device to a compatible USB memory stick or hard drive.

Connect a memory stick

- 1 Connect the micro USB end of the USB OTG adapter to the USB port in your device.
- 2 Connect a memory stick to the USB OTG adapter.



The File manager application opens, and the memory stick is displayed as a mass memory.

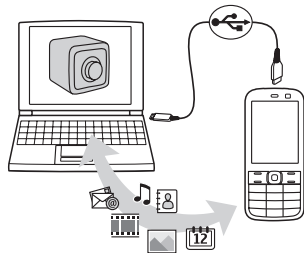
Copy or move a file

In File mgr., select and hold the file you want to copy or move, and from the pop-up menu, select the desired option and the target folder.

If you connect a hard drive that requires more than 200 mA of power, use an external power source for the hard drive.

Back up files

Want to make sure that you will not lose any important files? You can back up the device memory to a compatible computer or memory card.



Select **Menu > Applications > Office > File mgr. and Backup.**

It is recommended that you back up the device memory regularly to a compatible computer or memory card.

Tip: If you have DRM-protected content, use Nokia Ovi Suite to back up both the licences and the content to your computer.

Find more help

For local services and warranty information, please refer to the separate booklet.

Support

When you want to learn more about how to use your product or you are unsure how your device should function, go to www.nokia.com/support, or using a mobile device, nokia.mobi/support. You can also select **Menu > Applications > User guide** in your device.

If this does not resolve your issue, do one of the following:

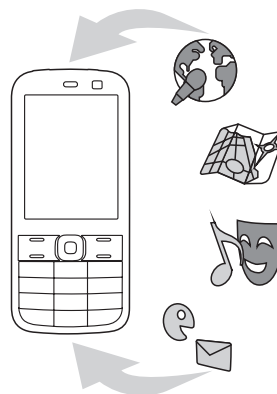
- Press and hold **⓪** for about 8 seconds. The device switches off. To switch the device on again, press **⓪**.

- Restore the original factory settings.
- Update your device software.

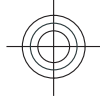
If your issue remains unsolved, contact Nokia for repair options. Go to www.nokia.com/repair, or in Latin America, www.nokia-latinoamerica.com/centrosdeservicio. Before sending your device for repair, always back up the data in your device.

Keep your device software and applications up to date About device software and application updates

With device software updates and application updates, you can get new features and enhanced functions for your device. Updating the software may also improve your device performance.



It is recommended that you back up your personal data before updating your device software.

**Warning:**


If you install a software update, you cannot use the device, even to make emergency calls, until the installation is completed and the device is restarted.

After you update your device software or applications, the instructions in the user guide may no longer be up to date.

Update device software and applications using your device

You can check if there are updates available for your device software or for individual applications, and then download and install them to your device (network service). You can also set your device to automatically check for updates and notify you when important or recommended updates are available.

Select **Menu > Applications > Tools > SW update**.

If there are available updates, select which updates to download and install, and select .

Set your device to automatically check for updates

Select **Options > Settings > Auto-check for updates**.

Update device software using your PC

You can use the Nokia Software Updater PC application to update your device software. To update your device software, you need a compatible PC, a high-speed internet connection, and a compatible USB data cable to connect your device to the PC.

To get more information and to download the Nokia Software Updater application, go to www.nokia.com/softwareupdate, or in Latin America, www.nokia-latinoamerica.com/nsu.

Accessibility solutions

Nokia is committed to making mobile phones easy to use for all individuals, including those with disabilities. For more information, visit the Nokia website at www.nokiaaccessibility.com.

Access codes

PIN code — This code protects your SIM card against unauthorised use. The PIN code (4 - 8 digits) is usually supplied with the SIM card.

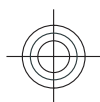
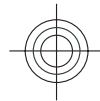
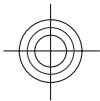
PIN2 code — This code (4 - 8 digits) is supplied with some SIM cards, and is required to access some functions in your device.

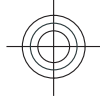
If you forget an access code, contact the network service provider whose SIM card is in your device. After three consecutive incorrect PIN or PIN2 code entries, the code is blocked, and you need the PUK code to unblock it.

PUK code and PUK2 code — These codes (8 digits) are required to change a blocked PIN code or PIN2 code, respectively. If the codes are not supplied with the SIM card, contact the network service provider whose SIM card is in your device.

IMEI number — This number (15 or 17 digits) is used to identify valid devices in the GSM network. Devices that are, for example, stolen, can be blocked from accessing the network.

Lock code (also known as security code) — The lock code helps you to protect





your device against unauthorised use. You can create and change the code, and set the device to request the code. Keep the new code secret and in a safe place separate from your device. If you forget the code and your device is locked, your device will require service. Additional charges may apply, and all the personal data in your device may be deleted. For more information, contact a Nokia Care Point or your device dealer.

Green tips



Save energy

You do not need to charge your battery so often if you do the following (if available for your device):

- Close applications and data connections, for example, your Bluetooth connection, when not in use.
- Decrease the brightness of the screen.
- Set your device to enter power saver mode after the minimum period of inactivity, if available in your device.
- Deactivate unnecessary sounds, such as key tones.

Recycle

All materials of this device can be recovered as materials and energy. For information on how to recycle your old Nokia products, go to www.nokia.com/wecycle, or using a mobile device, nokia.mobi/wecycle.

Recycle packaging and user guides at your local recycling scheme.

For more information on the environmental attributes of your device, go to www.nokia.com/ecodeclaration.

Product and safety information

Network services and costs

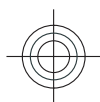
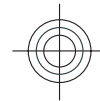
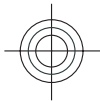
Your device is approved for use on the WCDMA 850, 900, 1700, 1900, 2100 MHz networks. To use the device, you need a subscription with a service provider.

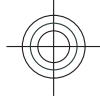
Using network services and downloading content to your device may result in data traffic costs. Some product features require support from the network, and you may need to subscribe to them.

Take care of your device

Handle your device, battery, charger and accessories with care. The following suggestions help you protect your warranty coverage.

- Keep the device dry. Precipitation, humidity, and all types of liquids or moisture can contain minerals that corrode electronic circuits.
- Do not use or store the device in dusty or dirty areas. Moving parts and electronic components can be damaged.
- Do not store the device in high temperatures. High temperatures can shorten the life of the device, damage the battery, and warp or melt plastics.
- Do not store the device in cold temperatures. When the device warms to its normal temperature, moisture can form inside the device and damage electronic circuits.
- Do not attempt to open the device other than as instructed in the user guide.
- Unauthorised modifications may damage the device and violate regulations governing radio devices.
- Do not drop, knock, or shake the device. Rough handling can break internal circuit boards and mechanics.
- Only use a soft, clean, dry cloth to clean the surface of the device.
- Do not paint the device. Paint can clog the moving parts and prevent proper operation.
- Keep your device away from magnets or magnetic fields.





- To keep your important data safe, store it in at least two separate places, such as your device, memory card, or computer, or write down important information.

During extended operation, the device may feel warm. In most cases, this condition is normal. If you suspect the device is not working properly, take it to the nearest authorised service facility.

Recycle

Always return your used electronic products, batteries, and packaging materials to dedicated collection points. This way you help prevent uncontrolled waste disposal and promote the recycling of materials. Check product environmental information and how to recycle your Nokia products at www.nokia.com/werecycle, or with a mobile device, <http://nokia.mobi/werecycle>.

About Digital Rights Management

When using this device, obey all laws and respect local customs, privacy and legitimate rights of others, including copyrights. Copyright protection may prevent you from copying, modifying, or transferring images, music, and other content.

Content owners may use different types of digital rights management (DRM) technologies to protect their intellectual property, including copyrights. This device uses various types of DRM software to access DRM-protected content. With this device you can access content protected with WM DRM 1.0 and OMA DRM 2.0. If certain DRM software fails to protect the content, content owners may ask that such DRM software's ability to access new DRM-protected content be revoked. Revocation may also prevent renewal of such DRM-protected content already in your device. Revocation of such DRM software does not affect the use of content protected with other types of DRM or the use of non-DRM-protected content.

Digital rights management (DRM) protected content comes with an associated licence that defines your rights to use the content.

If your device has OMA DRM-protected content, to back up both the licences and the content, use the backup feature of Nokia Ovi Suite.

Other transfer methods may not transfer the licences which need to be restored with the content for you to be able to continue the use of OMA DRM-protected content after the device memory is formatted. You may also need to restore the licences in case the files on your device get corrupted.

If your device has WMDRM-protected content, both the licences and the content will be lost if the device memory is formatted. You may also lose the licences and the content if the files on your device get corrupted. Losing the licences or

the content may limit your ability to use the same content on your device again. For more information, contact your service provider.

Some licences may be connected to a specific SIM card, and the protected content can be accessed only if the SIM card is inserted in the device.

Batteries and chargers Battery and charger information

This device has an internal, nonremovable, rechargeable battery. Do not attempt to remove the battery from the device as you may damage the device. Take the device to the nearest authorised service facility for replacement of the battery.

This device is intended for use when supplied with power from the following chargers: AC-15. The exact charger model number may vary depending on the type of plug. The plug variant is identified by one of the following: E, X, AR, U, A, C, K, or B.

The battery can be charged and discharged hundreds of times, but it will eventually wear out. When the talk and standby times are noticeably shorter than normal, take the device to the nearest authorised service facility for battery replacement.

Battery safety

Note: The battery in your device cannot be removed, so refer only to the battery-related statements that apply to your device.

When you unplug a charger or an accessory, hold and pull the plug, not the cord.

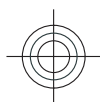
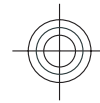
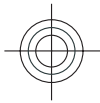
When your charger is not in use, unplug it from the electrical plug and the device. Do not leave a fully charged battery connected to a charger, as overcharging may shorten the battery's lifetime. If left unused, a fully charged battery will lose its charge over time.

Always keep the battery between 15°C and 25°C (59°F and 77°F). Extreme temperatures reduce the capacity and lifetime of the battery. A device with a hot or cold battery may not work temporarily.

Accidental short-circuiting can happen when a metallic object touches the metal strips on the battery. Short-circuiting may damage the battery or the connecting object.

Do not dispose of batteries in a fire as they may explode. Dispose of batteries according to local regulations. Recycle when possible. Do not dispose as household waste.

Do not dismantle, cut, open, crush, bend, puncture, or shred cells or batteries. If a battery leaks, do not let battery liquid





touch skin or eyes. If this happens, immediately flush the affected areas with water, or seek medical help.


Do not modify, remanufacture, attempt to insert foreign objects into the battery, or immerse or expose it to water or other liquids. Batteries may explode if damaged.

Use the battery and charger for their intended purposes only. Improper use, or use of unapproved batteries or chargers may present a risk of fire, explosion, or other hazard, and may invalidate any approval or warranty. If you believe the battery or charger is damaged, take it to a service centre for inspection before continuing to use it. Never use a damaged battery or charger. Only use the charger indoors.

Additional safety information

Emergency calls

Make an emergency call

- 1 Ensure the device is switched on.
- 2 Check for adequate signal strength. You may also need to do the following:
 - Insert a SIM card.
 - Remove call restrictions you have activated for your device, such as call barring, fixed dialling, or closed user group.
 - Ensure your device is not in an offline or flight profile.
 - If the device screen and keys are locked, unlock them.
- 3 To clear the display, press the menu key as many times as needed.
- 4 Select Call.
- 5 Enter the official emergency number for your present location.
- 6 Select .
- 7 Give the necessary information as accurately as possible. Do not end the call until given permission to do so.

Important: Activate both cellular and internet calls, if your device supports internet calls. The device may attempt to make emergency calls both through cellular networks and through your internet call service provider. Connections in all conditions cannot be guaranteed. Never rely solely on any wireless device for essential communications like medical emergencies.

Small children

Your device and its accessories are not toys. They may contain small parts. Keep them out of the reach of small children.

Medical devices

Operation of radio transmitting equipment, including wireless phones, may interfere with the function of inadequately protected medical devices. Consult a physician or the manufacturer of the medical device to determine whether they are adequately shielded from external RF energy. Switch off your device when regulations posted instruct you to do so, for example, in hospitals.

Implanted medical devices

Manufacturers of medical devices recommend a minimum separation of 15.3 centimetres (6 inches) between a wireless device and an implanted medical device, such as a pacemaker or implanted cardioverter defibrillator, to avoid potential interference with the medical device. Persons who have such devices should:

- Always keep the wireless device more than 15.3 centimetres (6 inches) from the medical device.
- Not carry the wireless device in a breast pocket.
- Hold the wireless device to the ear opposite the medical device.
- Turn the wireless device off if there is any reason to suspect that interference is taking place.
- Follow the manufacturer directions for the implanted medical device.

If you have any questions about using your wireless device with an implanted medical device, consult your health care provider.

Hearing

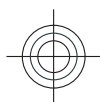
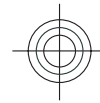
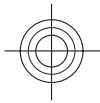
Warning: When you use the headset, your ability to hear outside sounds may be affected. Do not use the headset where it can endanger your safety.

Some wireless devices may interfere with some hearing aids.

Operating environment

This device meets RF exposure guidelines in the normal use position at the ear or at least 1.5 centimetres (5/8 inch) away from the body. Any carry case, belt clip, or holder for body-worn operation should not contain metal and should position the device the above-stated distance from your body.

To send data files or messages requires a quality connection to the network. Data files or messages may be delayed until such a connection is available. Follow the separation distance instructions until the transmission is completed.





Vehicles

Radio signals may affect improperly installed or inadequately shielded electronic systems in motor vehicles such as electronic fuel injection, electronic antilock braking, electronic speed control, and air bag systems. For more information, check with the manufacturer of your vehicle or its equipment.

Only qualified personnel should install the device in a vehicle. Faulty installation or service may be dangerous and may invalidate your warranty. Check regularly that all wireless device equipment in your vehicle is mounted and operating properly. Do not store or carry flammable liquids, gases, or explosive materials in the same compartment as the device, its parts, or accessories. Remember that air bags inflate with great force. Do not place your device or accessories in the air bag deployment area.

Switch off your device before boarding an aircraft. The use of wireless devices in an aircraft may be dangerous to the operation of the aircraft and may be illegal.

Potentially explosive environments

Switch off your device in any area with a potentially explosive atmosphere. Obey all posted instructions. Sparks in such areas could cause an explosion or fire resulting in bodily injury or death. Switch off the device at refuelling points such as near gas pumps at service stations. Observe restrictions in fuel depots, storage, and distribution areas; chemical plants; or where blasting operations are in progress. Areas with a potentially explosive atmosphere are often, but not always, clearly marked. They include areas where you would be advised to turn off your vehicle engine, below deck on boats, chemical transfer or storage facilities and where the air contains chemicals or particles such as grain, dust, or metal powders. You should check with the manufacturers of vehicles using liquefied petroleum gas (such as propane or butane) to determine if this device can be safely used in their vicinity.

Certification information (SAR)

This mobile device meets guidelines for exposure to radio waves.

Your mobile device is a radio transmitter and receiver. It is designed not to exceed the limits for exposure to radio waves recommended by international guidelines. These guidelines were developed by the independent scientific organisation ICNIRP and include safety margins designed to assure the protection of all persons, regardless of age and health.

The exposure guidelines for mobile devices employ a unit of measurement known as the Specific Absorption Rate or SAR. The SAR limit stated in the ICNIRP guidelines is 2.0 watts/kilogram (W/kg) averaged over 10 grams of tissue. Tests for SAR are conducted using standard operating positions with

the device transmitting at its highest certified power level in all tested frequency bands. The actual SAR level of an operating device can be below the maximum value because the device is designed to use only the power required to reach the network. That amount changes depending on a number of factors such as how close you are to a network base station.

The highest SAR value under the ICNIRP guidelines for use of the device at the ear is 1.02 W/kg.

Use of device accessories may result in different SAR values. SAR values may vary depending on national reporting and testing requirements and the network band. Additional SAR information may be provided under product information at www.nokia.com.

Your mobile device is also designed to meet the requirements for exposure to radio waves established by the Federal Communications Commission (USA) and Industry Canada. These requirements set a SAR limit of 1.6 W/kg averaged over one gram of tissue. The highest SAR value reported under this standard during product certification for use at the ear is 1.09 W/kg and when properly worn on the body is 0.85 W/kg.

Feature-specific information

Use of the Mail for Exchange is limited to over-the-air synchronisation of PIM information between the Nokia device and the authorised Microsoft Exchange server.

Note: Using WLAN may be restricted in some countries. For example, in France, you are only allowed to use WLAN indoors. For more information, contact your local authorities.

Note: Using FM transmitter may be restricted in some countries. For more information, contact your local authorities and go to www.nokia.com/fmtransmitter.

Copyright and other notices

DECLARATION OF CONFORMITY

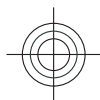
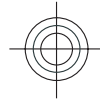
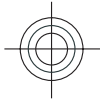
CE 0434

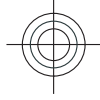


Hereby, NOKIA CORPORATION declares that this RM-596 product is in compliance with the essential requirements and other relevant provisions of Directive 1999/5/EC. A copy of the Declaration of Conformity can be found at www.nokia.com/phones/declaration_of_conformity/.

© 2010 Nokia. All rights reserved.

Nokia, Nokia Connecting People, Nseries, Nokia Original Accessories logo, and Ovi are trademarks or registered trademarks of Nokia Corporation. Nokia tune is a sound mark





of Nokia Corporation. Other product and company names mentioned herein may be trademarks or tradenames of their respective owners.

Reproduction, transfer, distribution, or storage of part or all of the contents in this document in any form without the prior written permission of Nokia is prohibited. Nokia operates a policy of continuous development. Nokia reserves the right to make changes and improvements to any of the products described in this document without prior notice.

HDMI

HDMI and the HDMI Logo are trademarks or registered trademarks of HDMI Licensing LLC.

Manufactured under license from Dolby Laboratories.



Java and all Java-based marks are trademarks or registered trademarks of Sun Microsystems, Inc.

This product is licensed under the MPEG-4 Visual Patent Portfolio License (i) for personal and noncommercial use in connection with information which has been encoded in compliance with the MPEG-4 Visual Standard by a consumer engaged in a personal and noncommercial activity and (ii) for use in connection with MPEG-4 video provided by a licensed video provider. No license is granted or shall be implied for any other use. Additional information, including that related to promotional, internal, and commercial uses, may be obtained from MPEG LA, LLC. See <http://www.mpegla.com>.

To the maximum extent permitted by applicable law, under no circumstances shall Nokia or any of its licensors be responsible for any loss of data or income or any special, incidental, consequential or indirect damages howsoever caused.

The contents of this document are provided "as is". Except as required by applicable law, no warranties of any kind, either express or implied, including, but not limited to, the implied warranties of merchantability and fitness for a particular purpose, are made in relation to the accuracy, reliability or contents of this document. Nokia reserves the right to revise this document or withdraw it at any time without prior notice.

Reverse engineering of software in the device is prohibited to the extent permitted by applicable law. Insofar as this user guide contains any limitations on Nokia's representations,

warranties, damages and liabilities, such limitations shall likewise limit any representations, warranties, damages and liabilities of Nokia's licensors.

The availability of products, features, applications and services may vary by region. For more information, contact your Nokia dealer or your service provider. This device may contain commodities, technology or software subject to export laws and regulations from the US and other countries. Diversion contrary to law is prohibited.

FCC/INDUSTRY CANADA NOTICE

Your device may cause TV or radio interference (for example, when using a telephone in close proximity to receiving equipment). The FCC or Industry Canada can require you to stop using your telephone if such interference cannot be eliminated. If you require assistance, contact your local service facility. This device complies with part 15 of the FCC rules. Operation is subject to the following two conditions: (1) This device may not cause harmful interference, and (2) this device must accept any interference received, including interference that may cause undesired operation. Any changes or modifications not expressly approved by Nokia could void the user's authority to operate this equipment.

Some operations and features are SIM card and/or network dependent, MMS dependent, or dependent on the compatibility of devices and the content formats supported. Some services are subject to a separate charge.

777777/Issue 1 EN

