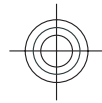
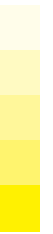
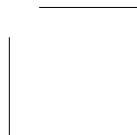
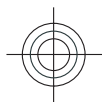
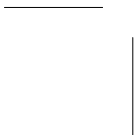


Nokia E7 User Guide



9223790
Issue 1



Contents		Mail	14
		About Mail	14
		Add a mailbox	14
Safety	3	Use separate calendars for work and free time	15
Start using your device	4	Navigate to a destination	15
About this user guide	4	Personalise your device	16
Use the in-device user guide	4	Personalise your tones	16
Get started	4	Personalise the home screen	16
Keys and parts	4	Add items to the home screen	16
Change the volume of a call, song, or video	6	Install Nokia Ovi Suite on your PC	17
Lock or unlock the keys and screen	7	Visit Nokia's Ovi Store	18
Flashlight	7	Back up files	18
Insert or remove the SIM card	7	Connect a USB mass storage device	18
Charge your device	8	Find more help	19
Switch the device on or off	9	Support	19
Nokia account and Nokia's Ovi services	9	Keep your device software and applications up to date	19
Device set-up	9	Access codes	20
Touch screen actions	10	Protect the environment	21
Keyboard shortcuts	11	Save energy	21
Interactive home screen elements	12	Recycle	21
Predefined home screens	12	Product and safety information	21
Call a phone number	13		
Search for a contact	13		
Save phone numbers and mail addresses	13		
Send a message	13		

www.nokia.com/support

Safety

Read these simple guidelines. Not following them may be dangerous or illegal. Read the complete user guide for further information.

SWITCH OFF IN RESTRICTED AREAS



Switch the device off when mobile phone use is not allowed or when it may cause interference or danger, for example, in aircraft, near medical equipment, fuel, chemicals, or blasting areas.

ROAD SAFETY COMES FIRST



Obey all local laws. Always keep your hands free to operate the vehicle while driving. Your first consideration while driving should be road safety.

INTERFERENCE



All wireless devices may be susceptible to interference, which could affect performance.

QUALIFIED SERVICE



Only qualified personnel may install or repair this product.

CHARGERS AND OTHER ACCESSORIES



Use only chargers and other accessories approved by Nokia for use with this device. Do not connect incompatible products.

KEEP YOUR DEVICE DRY



Your device is not water-resistant. Keep it dry.

GLASS PARTS



The front cover of the device is made of glass. This glass can break if the device is dropped on a hard surface or receives a substantial impact. If the glass breaks, do not touch the glass parts of the device or attempt to remove the broken glass from the device. Stop using the device until the glass is replaced by qualified service personnel.

PROTECT YOUR HEARING



Listen to a headset at a moderate level, and do not hold the device near your ear when the loudspeaker is in use.

Start using your device

- 1 Insert the SIM card. See "Insert or remove the SIM card", p. 7.
- 2 Charge the battery. See "Charge the battery", p. 8.
- 3 Press the power key. See "Switch the device on or off", p. 9.
- 4 Follow the displayed start-up instructions:
 - Accept to receive Nokia tips to find out what you can do with your device.
 - Register a Nokia account, so you can access all Nokia's Ovi services. See "Nokia account and Nokia's Ovi services", p. 9.
 - Copy your personal content from your previous Nokia device to your new device. See "Device set-up", p. 9.
- 5 Personalise the home screen or main menu. See "Personalise your device", p. 16.

About this user guide

This short user guide helps you get started with your device. With a short printed user guide, Nokia helps save energy and paper.

Your device contains a complete in-device user guide, which you can refer to for additional information about your device. To read the in-device user guide, select **Menu > Applications > User guide**.

For even more support information, go to www.nokia.com/support, or using a mobile device, nokia.mobi/support.

Use the in-device user guide

Select **Menu > Applications > User guide**.

Open the user guide from an application


Select **Options > User guide**. This is not available for every application.

Search the user guide

When the user guide is open, select **Options > Search**, and enter a letter or a word in the search field.

Switch between the user guide and an application

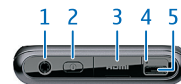
Press and hold the menu key, swipe left or right, and select the desired application.


 indicates a link to a web page. Links to related topics may be at the end of instructions.

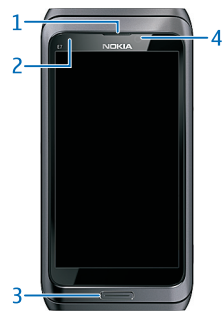
Get started

Keys and parts

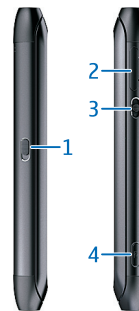
Top




- 1 Nokia AV connector (3.5 mm)
- 2 Power key 
- 3 HDMI™ connector
- 4 Charging indicator
- 5 USB connector

Front

- 1 Earpiece
- 2 Light sensor
- 3 Menu key
- 4 Secondary camera lens

Sides

- 1 Lock switch
- 2 SIM card slot
- 3 Volume/Zoom key
- 4 Camera key 

Back

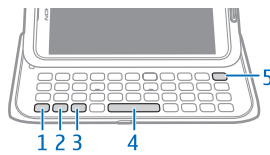
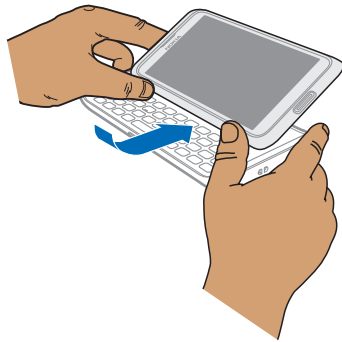
- 1 Camera flash
- 2 Camera lens
- 3 Loudspeaker
- 4 Microphone




Bottom

- 1 Microphone



Keyboard

Your device has a full keyboard. To open the keyboard, push the touch screen up. The display rotates automatically from portrait to landscape when you open the keyboard.



- 1  Function key. To insert special characters printed at the top of keys, press the function key, and then press the corresponding key. To enter several special characters in a row, press the function key twice. To return to normal mode, press the function key.
- 2  Shift key. To switch between the upper and lower case modes, press the shift key twice. To enter a single upper case letter in lower case mode, or a single lower case letter in upper case mode, press the shift key, and then press the desired alphabet key.
- 3  Sym key. To insert special characters not shown on the keyboard, press the sym key, and select the desired character. To change the writing

language, press and hold the shift key, and then press the sym key, and select the desired language.

- 4  Space key
- 5  Backspace key. To delete a character, press the backspace key. To delete several characters, press and hold the backspace key.

Insert a variation of a letter

You can insert, for example, letters with accents. To insert á, press and hold the sym key, and then press A repeatedly, until the desired letter is displayed. The order and availability of letters depends on the selected writing language.

Insert a number or special character that is printed at the top of a key

Press and hold the desired key.

Change the volume of a call, song, or video

Use the volume key.

You can change the volume during a call or when an application is active.

The built-in loudspeaker allows you to speak and listen from a short distance without having to hold the device to your ear.

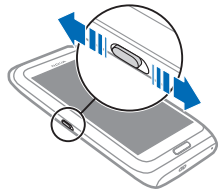
Activate or deactivate the loudspeaker during a call

Select  or .

Lock or unlock the keys and screen

To avoid accidentally making a call when your device is in your pocket or bag, lock the keys and screen of your device.

Slide the lock switch.



Set the keys and screen to lock automatically

- 1 Select **Menu > Settings and Phone > Display > Screen/keylock time-out**.
- 2 Define the length of time after which the keys and screen are locked automatically.

Flashlight

The camera flash can be used as a flashlight. To switch the flashlight on or off, slide and hold the lock switch for two seconds.

The flashlight can only be used when you are in the home screen. You can switch the flashlight on also when you are in the home screen and the keys and screen or the device is locked.

Do not shine the flashlight in anyone's eyes.

Insert or remove the SIM card

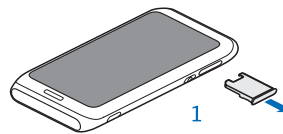
Do not attach any stickers to your SIM card.

Important: Do not use a mini-UICC SIM card, also known as a micro-SIM card, a micro-SIM card with an adapter, or a SIM card that has a mini-UICC cutout (see figure) in this device. A micro SIM card is smaller than the standard SIM card. This device does not support the use of micro-SIM cards and use of incompatible SIM cards may damage the card or the device, and may corrupt data stored on the card.

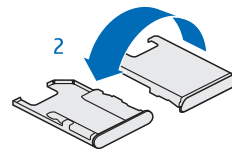


Insert the SIM card

- 1 Remove the SIM card holder from the device.

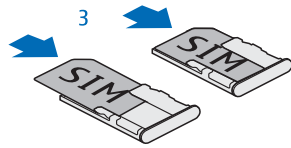


- 2 Turn the SIM card holder over.

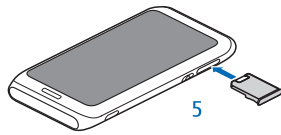


- 3 Make sure the contact area is facing up, and insert the SIM card into the SIM card holder.

www.nokia.com/support



- 4 Turn the SIM card holder over and insert it back into the device.



Remove the SIM card

- 1 Switch the device off.
- 2 Remove the SIM card holder from the device.
- 3 Remove the SIM card.
- 4 Turn the SIM card holder over.
- 5 Insert the SIM card holder back into the device.

Charge your device About the battery

Your device has an internal, nonremovable, rechargeable battery. Use only Nokia approved chargers designated for this device. You can also use a

compatible USB data cable to charge your device.

Do not attempt to remove the battery from the device. Take the device to the nearest authorised service facility for replacement of the battery.

Authorised retail points may also offer a battery replacement service.

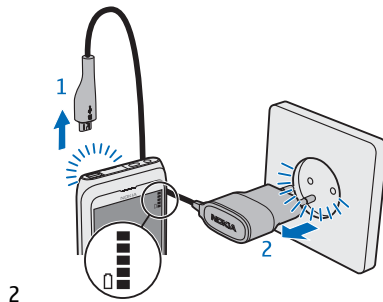
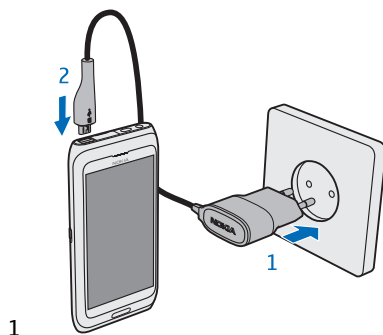
Important: Only qualified personnel or an authorised service facility should replace the battery. Unauthorised battery replacement may invalidate your warranty.

When your device is low on power, it goes into power save mode. To deactivate power save mode, press **⏻**, and select **Deactivate power saving**. When power save mode is activated, you may not be able to modify the settings of certain applications.

Charge the battery

Your battery has been partially charged at the factory, but you may need to recharge it before you can switch on your device for the first time.

If the device indicates a low charge, do the following:



You do not need to charge the battery for a specific length of time, and you can use the device while it is charging.

If the battery is completely discharged, it may take several minutes before the charging indicator appears on the display or before any calls can be made.

If the battery has not been used for a long time, to begin charging, you may need to connect the charger, then disconnect and reconnect it.

Switch the device on or off

Press and hold .



Nokia account and Nokia's Ovi services

When you switch on your device for the first time, you can create a Nokia account, so you can access Nokia's Ovi services.


With Ovi services and your Nokia account, you can, for example:

- See your friends' statuses in different social networking services
- Download games, applications, videos, pictures, themes, and ringing tones from Ovi Store
- Get to where you want to go with free walk and drive navigation
- Back up and manage your contacts in the Ovi internet service

To learn more about Ovi, go to www.ovi.com.





To create a Nokia account later, use your device to access an Ovi service, and you are prompted to create an account.

Device set-up

To define some basic settings for your device, select the Phone setup shortcut  that is in one of your home screens.

To switch between home screens, swipe left or right.

With Phone setup, you can do the following:

-  Copy contacts, pictures, and other content from your previous Nokia device
-  Personalise your device, by changing the ringing tone and visual theme
-  Set up mail
-  Update your device software

To define the settings later, you can also select **Menu > Applications > Tools > Phone setup**.

Touch screen actions

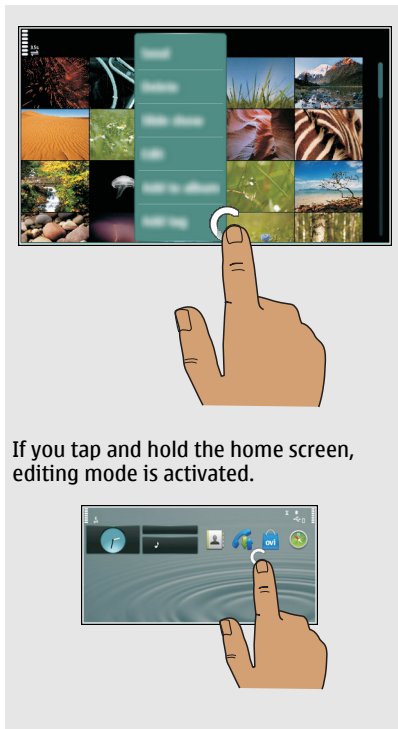
To interact with the user interface, tap or tap and hold the touch screen.

Open an application or other screen element

Tap the application or element.

Access functions quickly

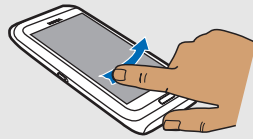
Tap and hold the item. A pop-up menu with available options opens. For example, to send an image or delete an alarm, tap and hold the image or alarm, and from the pop-up menu, select the appropriate option.



Drag an item

Tap and hold the item, and slide your finger across the screen. The item follows your finger.

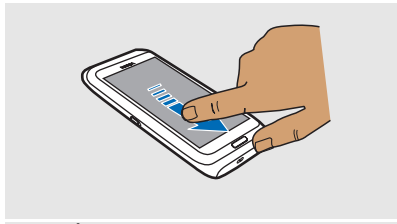
You can drag items in the home screen or the main menu, when you have activated editing mode.

Swipe

Place a finger on the screen, and steadily slide your finger in the desired direction. For example, when you are viewing a picture, to view the next picture, swipe left.

Scroll in a list or menu

Place your finger on the screen, slide it quickly up or down the screen, then lift your finger. The content of the screen scrolls with the speed and direction it had at the moment of release. To select an item from a scrolling list and to stop the movement, tap the item.

**Zoom in**

Place two fingers on an item, such as a picture or web page, and slide your fingers apart.

**Zoom out**

Place two fingers on the item, and slide your fingers together.

Tip: You can also tap the item twice to zoom in or out.

Keyboard shortcuts

Shortcuts can make the use of the applications more efficient.

General shortcuts

Ctrl + A	Select all.
Ctrl + C	Copy text.
Ctrl + X	Cut text.

Ctrl + V	Paste text.
Shift + Sym	Change the writing language.

E-mail shortcuts

A	Reply to all.
C	Create a new message.
D	Delete a message.
F	Forward a message.
O	Open a message.
R	Reply to a message.
Z	Synchronise the mail account.
Ctrl + S	Save a message in the Drafts folder.
+	Zoom out.
#	Zoom in.

Interactive home screen elements

The home screen elements are interactive. For example, you can change the date and time, set alarms, write calendar entries, or edit the profiles directly in the home screen.



Set an alarm

Select the clock (1).

Activate or edit profiles

Select the profile (2).

View or edit your schedule

Select the date (3).

View missed calls and received messages

Select the notification area (4).

View available WLANs or manage Bluetooth connectivity

Select the notification area (4).

Modify the connectivity settings

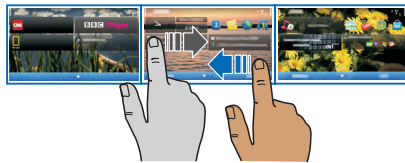
Select the notification area (4) and .

In most other views, you can select the notification area (4), and do the following:

- Modify the connectivity settings.
- Open the Clock application, and set an alarm.
- View the battery status, and activate power saving mode.
- View notifications of missed calls or received messages.
- Open the WLAN wizard, and connect to a WLAN.
- Manage Bluetooth connectivity.



Predefined home screens

Your device has separate home screens for business and personal needs, and a screen for your internet links. You can personalise the screens to your liking.



To switch to another home screen, swipe left or right. ●●● indicates the currently displayed home screen.

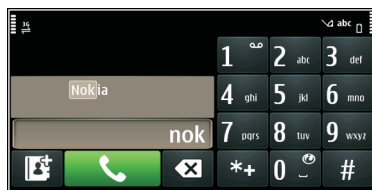
Call a phone number

- 1 In the home screen, select **Call** to open the dialler, and enter the phone number.
To enter the + character, used for international calls, select * twice.
- 2 To make the call, select .
- 3 To end the call, select .

Search for a contact

You can search for a contact you have saved in the contacts list.

In the home screen, open the keyboard, and start entering the contact's first or second name. You can also search by company name.



Deactivate contact search


In the dialler, select **Options > Contact search > Off**.

Save phone numbers and mail addresses


You can save your friends' phone numbers, mail addresses, and other information to your contacts list.

Select **Menu > Contacts**.

Add a contact to the contacts list

- 1 Select **Options > New contact**.
- 2 Select a field, and enter the details. To close the text input, select .

Edit contact information

- 1 Select a contact.
- 2 Open the contact card tab .
- 3 Select a contact detail.

Add details about a contact



Select a contact and **Options > Edit > Options > Add detail**.

Send a message

With text and multimedia messages, you can quickly contact your friends and family. In a multimedia message, you can attach pictures, videos, and sound clips that you want to share.

Select **Menu > Messaging**.

- 1 Select **New message**.

- 2 To select recipients from the contacts list, select the **To** title. To enter the recipient's phone number manually, enter the number in the **To** field.
- 3 To add an attachment, select .
- 4 Select .

Sending a message with an attachment may be more expensive than sending a normal text message. For more information, contact your service provider.

You can send text messages that are longer than the character limit for a single message. Longer messages are sent as two or more messages. Your service provider may charge accordingly.

Characters with accents, other marks, or some language options, take more space, and limit the number of characters that can be sent in a single message.

If the item you inserted in a multimedia message is too large for the network, the device may automatically reduce the size.

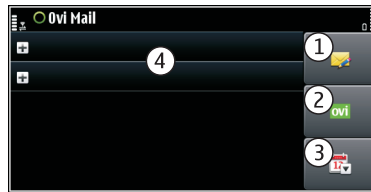
Only compatible devices can receive and display multimedia messages. Messages may look different in different devices.

Mail

About Mail

Select **Menu** > **Applications** > **Mail**.

With Mail, you can add several mailboxes and access them directly from your home screen. In the main mail view, you can switch from one mailbox to another.



- 1 Write a mail.
- 2 Switch between your mailboxes.
- 3 Sort your mail by, for example, date.
- 4 Mail in current mailbox.

Mail contains interactive elements. Select and hold, for example, a mail to view a pop-up menu.

Add a mailbox

You can add several mailboxes to your device.

- 1 In the home screen, select **New mailbox** > **Start**.
- 2 Select a mail account. To get a free Ovi Mail account from Nokia, select **Ovi Mail** and **Sign up now**.
- 3 Enter your account details, and select **OK**.

Delete a mailbox

- 1 Select **Menu** > **Applications** > **Mail**.
- 2 Select and hold the mailbox, and select **Delete mailbox**.

Use separate calendars for work and free time

You can have more than one calendar. Create one for work and another for your free time.

In the home screen, select the date.

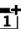
Create a new calendar

- 1 Select **Options** > **Manage calendars**.
- 2 Select **Options** > **Create new calendar**.
- 3 Enter a name, and set a colour code for the calendar.
- 4 Define the visibility for the calendar. When a calendar is hidden, the calendar entries and reminders are not displayed in different calendar views or in the home screen.

Modify calendar settings

In the Manage calendars view, select the desired calendar.

Add an entry to a particular calendar

- 1 Go to the desired date, and select .
- 2 Select the desired entry type.
- 3 Select **Calendar entry saved to** and the calendar you want to save the entry to.

In different calendar views, the colour codes indicate to which calendar an entry is saved.

Navigate to a destination



Select **Menu** > **Maps**.

Maps shows you what is nearby, helps you plan your route, and guides you where you want to go, free of charge. You can:

- Find cities, streets, and services
- Find your way with turn-by-turn directions
- Synchronise your favourite locations and routes between your mobile device and the Ovi Maps internet service
- Check weather forecasts and other local information, if available

Some services may not be available in all countries, and may be provided only in selected languages. The services may be network dependent. For more information, contact your network service provider.

Using the service or downloading content may cause transfer of large amounts of data, which may result in data traffic costs.

Almost all digital cartography is inaccurate and incomplete to some extent. Never rely solely on the cartography that you download for use in this device.

Some content is generated by third parties and not Nokia. The content may be inaccurate and is subject to availability.

Personalise your device

Personalise your tones

You can personalise your device tones for each profile.

Select **Menu > Settings > Profiles**.

- 1 Select the desired profile.
- 2 Select **Personalise** and the desired option.

Tip: Download ringing tones from Ovi Store. To learn more about Ovi Store, go to www.ovi.com.

Personalise the home screen

Want to see your favourite landscape or pictures of your family in the home screen background? You can change this wallpaper, and rearrange items in the home screen, to personalise it to your liking.

Tip: If you have more than one home screen, you can switch between them also while editing, and personalise all your home screens at the same time.

Change the wallpaper

- 1 Tap and hold the home screen.
- 2 Select **Options > Change wallpaper > Image**.
- 3 Select the desired picture.
- 4 Select **Done**.

Tip: Download more background images from Nokia's Ovi Store. To learn more about Ovi Store, go to www.ovi.com.

Rearrange items in the home screen

- 1 Tap and hold the home screen.

- 2 Drag and drop items to a new location.
- 3 Select **Done**.

Add items to the home screen

You can create shortcuts to your most used features and add mini-applications (widgets) that display helpful information.


You can add shortcuts to applications, web bookmarks, or actions, such as writing a message.

Add a shortcut to the home screen

- 1 Tap and hold the home screen.
- 2 Select the shortcut widget and **Settings**.
- 3 Select the shortcut you want to define, and select **Bookmark or Application** and the desired item.
- 4 Select **Back > Done**.

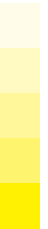
Tip: To remove a shortcut, replace it with another one.

Add a widget to the home screen

- 1 Tap and hold the home screen.
- 2 Select  and the desired widget from the list.
- 3 Select **Done**.

Tip: To download more widgets, select **Store**.

Using the service or downloading content may cause transfer of large amounts of data, which may result in data traffic costs.



Some home screen widgets may connect to the internet automatically. To prevent this, select **Options > Widgets to offline mode**.

Remove a widget from the home screen

- 1 Tap and hold the home screen.
- 2 Select the widget, and from the pop-up menu, select **Remove**.
- 3 Select **Done**.

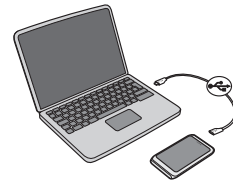
Install Nokia Ovi Suite on your PC

With the Nokia Ovi Suite PC application, you can manage content on your device, and keep it in sync with your computer.

Download the latest version of Nokia Ovi Suite from www.ovi.com/suite.

If you cannot connect to the internet, to install Nokia Ovi Suite and Nokia Ovi Player from your device:

- 1 Use a compatible USB data cable to connect your device to your computer.
If you are using Windows XP or Windows Vista on your computer, set the USB mode of your device to **Mass storage**: on your device, select the notification area in the top right corner, and select **USB > Mass storage**.
Your device mass memory appears as a removable disk on your PC.



- 2 On your computer, select **Install Nokia Ovi Suite**.



If the installation window does not open automatically, open the installation file manually. Select **Open folder to view files**, and double-click **Install_Nokia_Ovi_Suite.exe**.



- 3 Follow the instructions.
- 4 When the installation is complete, if you are using Windows XP or Windows Vista on your computer, set the USB mode of your device to **Media transfer**: on your device, select the notification area in the top right corner, and select **USB > Media transfer**.

To learn more about Nokia Ovi Suite, go to www.ovi.com/suite.

To check which operating systems Nokia Ovi Suite supports, go to www.nokia.com/support.

Visit Nokia's Ovi Store

 Select Menu > Store.

From Nokia's Ovi Store, you can download:

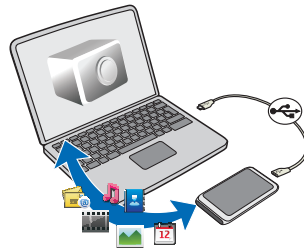
- Applications
- Themes, wallpapers, pictures, and videos
- Ringing tones
- Mobile games

Some items are free of charge; others you need to pay for with your credit card or in your phone bill. The availability of payment methods depends on your country of residence and your network service provider. Ovi Store offers content that is compatible with your mobile device and relevant to your tastes and location.

For more information, go to www.ovi.com.

Back up files

Want to make sure that you will not lose any important files? You can back up the device memory to a compatible computer.



- 1 Open Nokia Ovi Suite on your PC.
- 2 Connect your device to your PC using Nokia Ovi Suite mode.
- 3 In Ovi Suite, select **Tools > Backup**.

It is recommended that you back up the device memory regularly to a compatible computer.

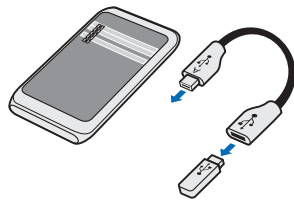
Tip: If you have DRM-protected content, use Nokia Ovi Suite to back up both the licences and the content to your computer.

Connect a USB mass storage device

With the USB On-The-Go (OTG) adapter, you can connect your device to a compatible USB memory stick or hard drive.

Connect a memory stick

- 1 Connect the micro USB end of the USB OTG adapter to the USB port in your device.
- 2 Connect a memory stick to the USB OTG adapter.



The File manager application opens, and the memory stick is displayed as a mass memory.

Copy or move a file

In File mgr., select and hold the file you want to copy or move, and from the pop-up menu, select the desired option and the target folder.


If you connect a hard drive that requires more than 200 mA of power, use an external power source for the hard drive.


Find more help

Support

When you want to learn more about how to use your product or you are unsure how your device should function, go to www.nokia.com/support, or using a mobile device, nokia.mobi/support. You can also select **Menu > Applications > User guide** in your device.

If this does not resolve your issue, do one of the following:

- Reboot your device. Press and hold  for about 8 seconds. The device vibrates three times and switches off.

To switch your device on again, press .

- Restore the original factory settings.
- Update your device software.

If your issue remains unsolved, contact Nokia for repair options. Go to www.nokia.com/repair. Before sending your device for repair, always back up the data in your device.

Keep your device software and applications up to date

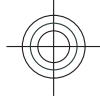
About device software and application updates


With device software updates and application updates, you can get new features and enhanced functions for your device. Updating the software may also improve your device performance.



It is recommended that you back up your personal data before updating your device software.

www.nokia.com/support




 **Warning:**
If you install a software update, you cannot use the device, even to make emergency calls, until the installation is completed and the device is restarted.


Using the service or downloading content may cause transfer of large amounts of data, which may result in data traffic costs.

After you update your device software or applications, the instructions in the user guide may no longer be up to date.

Update device software and applications using your device

 You can check if there are updates available for your device software or for individual applications, and then download and install them to your device (network service). You can also set your device to automatically check for updates and notify you when important or recommended updates are available.

Select **Menu > Applications > SW update**.

If there are available updates, select which updates to download and install, and select .

Set your device to automatically check for updates

Select **Options > Settings > Auto-check for updates**.

Update device software using your PC

You can use the Nokia Ovi Suite PC application to update your device software. You need a compatible PC, a high-speed internet connection, and a compatible USB data cable to connect your device to the PC.

To get more information and to download the Nokia Ovi Suite application, go to www.ovi.com/suite.

Access codes

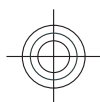
PIN code — This code protects your SIM card against unauthorised use. The PIN code (4 - 8 digits) is usually supplied with the SIM card.

PIN2 code — This code (4 - 8 digits) is supplied with some SIM cards, and is required to access some functions in your device.

If you forget an access code, contact the network service provider whose SIM card is in your device. After three consecutive incorrect PIN or PIN2 code entries, the code is blocked, and you need the PUK or PUK2 code to unblock it.

PUK code and PUK2 code — These codes (8 digits) are required to change a blocked PIN code or PIN2 code, respectively. If the codes are not supplied with the SIM card, contact the network service provider whose SIM card is in your device.

IMEI number — This number (15 digits) is used to identify valid devices in the GSM network. Devices that are, for example, stolen, can be blocked from accessing the network. To view the IMEI number for your device, in the home screen, enter ***#06#**.



Lock code (also known as security code) — The lock code helps you to protect your device against unauthorised use. You can create and change the code, and set the device to request the code. Keep the new code secret and in a safe place separate from your device. If you forget the code and your device is locked, your device will require service. Additional charges may apply, and all the personal data in your device may be deleted. For more information, contact a Nokia Care Point or your device dealer.

Protect the environment

Save energy

You do not need to charge your battery so often if you do the following:

- Close applications and data connections, such as WLAN or Bluetooth, when not in use.
- Deactivate unnecessary sounds, such as key tones.

Recycle



When this device has reached the end of its working life, all of its materials can be recovered as materials and energy. To guarantee the correct disposal and reuse, Nokia co-operates with its partners through a program called We:recycle. For information on how to recycle your old Nokia products and where to find collection sites, go to www.nokia.com/

www.nokia.com/support

werecycle, or using a mobile device, nokia.mobi/werecycle, or call the Nokia Contact Center.

Recycle packaging and user guides at your local recycling scheme.



The crossed-out wheeled-bin symbol on your product, battery, literature, or packaging reminds you that all electrical and electronic products, batteries, and accumulators must be taken to separate collection at the end of their working life. This requirement applies in the European Union. Do not dispose of these products as unsorted municipal waste. For more information on the environmental attributes of your device, see www.nokia.com/ecodeclaration.

Product and safety information

Network services and costs

Your device is approved for use on the WCDMA 850, 900, 1700, 1900, 2100 and GSM/EDGE 850, 900, 1800, 1900 MHz networks. To use the device, you need a subscription with a service provider.

Using network services and downloading content to your device may result in data traffic costs. Some product features require support from the network, and you may need to subscribe to them.

Take care of your device

Handle your device, battery, charger and accessories with care. The following suggestions help you protect your warranty coverage.

- Keep the device dry. Precipitation, humidity, and all types of liquids or moisture can contain minerals that corrode electronic circuits.



- Do not use or store the device in dusty or dirty areas. Moving parts and electronic components can be damaged.
- Do not store the device in high temperatures. High temperatures can shorten the life of the device, damage the battery, and warp or melt plastics.
- Do not store the device in cold temperatures. When the device warms to its normal temperature, moisture can form inside the device and damage electronic circuits.
- Do not attempt to open the device other than as instructed in the user guide.
- Unauthorised modifications may damage the device and violate regulations governing radio devices.
- Do not drop, knock, or shake the device. Rough handling can break internal circuit boards and mechanics.
- Only use a soft, clean, dry cloth to clean the surface of the device.
- Do not paint the device. Paint can clog the moving parts and prevent proper operation.
- Keep your device away from magnets or magnetic fields.
- To keep your important data safe, store it in at least two separate places, such as your device, memory card, or computer, or write down important information.

During extended operation, the device may feel warm. In most cases, this condition is normal. If you suspect the device is not working properly, take it to the nearest authorised service facility.

Recycle

Always return your used electronic products, batteries, and packaging materials to dedicated collection points. This way you help prevent uncontrolled waste disposal and promote the recycling of materials. Check product environmental information and how to recycle your Nokia products at www.nokia.com/werecycle, or with a mobile device, <http://nokia.mobi/werecycle>.

About Digital Rights Management

When using this device, obey all laws and respect local customs, privacy and legitimate rights of others, including copyrights. Copyright protection may prevent you from copying, modifying, or transferring images, music, and other content.

Content owners may use different types of digital rights management (DRM) technologies to protect their intellectual property, including copyrights. This device uses various types

of DRM software to access DRM-protected content. With this device you can access content protected with WM DRM 10 and OMA DRM 2.0. If certain DRM software fails to protect the content, content owners may ask that such DRM software's ability to access new DRM-protected content be revoked. Revocation may also prevent renewal of such DRM-protected content already in your device. Revocation of such DRM software does not affect the use of content protected with other types of DRM or the use of non-DRM-protected content.

Digital rights management (DRM) protected content comes with an associated licence that defines your rights to use the content.

If your device has OMA DRM-protected content, to back up both the licences and the content, use the backup feature of Nokia Ovi Suite.

Other transfer methods may not transfer the licences which need to be restored with the content for you to be able to continue the use of OMA DRM-protected content after the device memory is formatted. You may also need to restore the licences in case the files on your device get corrupted.

If your device has WMDRM-protected content, both the licences and the content will be lost if the device memory is formatted. You may also lose the licences and the content if the files on your device get corrupted. Losing the licences or the content may limit your ability to use the same content on your device again. For more information, contact your service provider.

Some licences may be connected to a specific SIM card, and the protected content can be accessed only if the SIM card is inserted in the device.

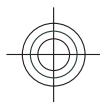
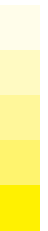
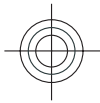
Batteries and chargers

Battery and charger information

This device has an internal, nonremovable, rechargeable battery. Do not attempt to remove the battery from the device as you may damage the device. Take the device to the nearest authorised service facility for replacement of the battery.

This device is intended for use when supplied with power from the following chargers: AC-10. The exact charger model number may vary depending on the type of plug. The plug variant is identified by one of the following: E, X, AR, U, A, C, K, or B.

The battery can be charged and discharged hundreds of times, but it will eventually wear out. When the talk and standby times are noticeably shorter than normal, take the



device to the nearest authorised service facility for battery replacement.

Battery safety



Note: The battery in your device is non-removable, so refer to the battery-related statements as applicable to your device.

When you unplug a charger or an accessory, hold and pull the plug, not the cord.

When your charger is not in use, unplug it from the electrical plug and the device. Do not leave a fully charged battery connected to a charger, as overcharging may shorten the battery's lifetime. If left unused, a fully charged battery will lose its charge over time.

Always keep the battery between 15°C and 25°C (59°F and 77°F). Extreme temperatures reduce the capacity and lifetime of the battery. A device with a hot or cold battery may not work temporarily.

Accidental short-circuiting can happen when a metallic object touches the metal strips on the battery. Short-circuiting may damage the battery or the connecting object.

Do not dispose of batteries in a fire as they may explode. Dispose of batteries according to local regulations. Recycle when possible. Do not dispose as household waste.

Do not dismantle, cut, open, crush, bend, puncture, or shred cells or batteries. If a battery leaks, do not let battery liquid touch skin or eyes. If this happens, immediately flush the affected areas with water, or seek medical help.

Do not modify, remanufacture, attempt to insert foreign objects into the battery, or immerse or expose it to water or other liquids. Batteries may explode if damaged.

Use the battery and charger for their intended purposes only. Improper use, or use of unapproved batteries or chargers may present a risk of fire, explosion, or other hazard, and may invalidate any approval or warranty. If you believe the battery or charger is damaged, take it to a service centre for inspection before continuing to use it. Never use a damaged battery or charger. Only use the charger indoors.

Additional safety information

Emergency calls

Make an emergency call

- 1 Ensure the device is switched on.

- 2 Check for adequate signal strength. You may also need to do the following:

- Insert a SIM card.
- Remove call restrictions you have activated for your device, such as call barring, fixed dialling, or closed user group.
- Ensure your device is not in an offline or flight profile.
- If the device screen and keys are locked, unlock them.

- 3 To clear the display, press the menu key as many times as needed.

- 4 Select Call.

- 5 Enter the official emergency number for your present location.

- 6 Select .

- 7 Give the necessary information as accurately as possible. Do not end the call until given permission to do so.



Important: Activate both cellular and internet calls, if your device supports internet calls. The device may attempt to make emergency calls both through cellular networks and through your internet call service provider. Connections in all conditions cannot be guaranteed. Never rely solely on any wireless device for essential communications like medical emergencies.

Small children

Your device and its accessories are not toys. They may contain small parts. Keep them out of the reach of small children.

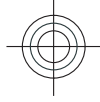
Medical devices

Operation of radio transmitting equipment, including wireless phones, may interfere with the function of inadequately protected medical devices. Consult a physician or the manufacturer of the medical device to determine whether they are adequately shielded from external RF energy. Switch off your device when regulations posted instruct you to do so, for example, in hospitals.

Implanted medical devices

Manufacturers of medical devices recommend a minimum separation of 15.3 centimetres (6 inches) between a wireless device and an implanted medical device, such as a pacemaker or implanted cardioverter defibrillator, to avoid potential

www.nokia.com/support




interference with the medical device. Persons who have such devices should:

- Always keep the wireless device more than 15.3 centimetres (6 inches) from the medical device.
- Not carry the wireless device in a breast pocket.
- Hold the wireless device to the ear opposite the medical device.
- Turn the wireless device off if there is any reason to suspect that interference is taking place.
- Follow the manufacturer directions for the implanted medical device.

If you have any questions about using your wireless device with an implanted medical device, consult your health care provider.

Hearing

 **Warning:**
When you use the headset, your ability to hear outside sounds may be affected. Do not use the headset where it can endanger your safety.

Some wireless devices may interfere with some hearing aids.

Operating environment

This device meets RF exposure guidelines in the normal use position at the ear or at least 1.5 centimetres (5/8 inch) away from the body. Any carry case, belt clip, or holder for body-worn operation should not contain metal and should position the device the above-stated distance from your body.

To send data files or messages requires a quality connection to the network. Data files or messages may be delayed until such a connection is available. Follow the separation distance instructions until the transmission is completed.

Vehicles

Radio signals may affect improperly installed or inadequately shielded electronic systems in motor vehicles such as electronic fuel injection, electronic antilock braking, electronic speed control, and air bag systems. For more information, check with the manufacturer of your vehicle or its equipment.

Only qualified personnel should install the device in a vehicle. Faulty installation or service may be dangerous and may invalidate your warranty. Check regularly that all wireless

device equipment in your vehicle is mounted and operating properly. Do not store or carry flammable liquids, gases, or explosive materials in the same compartment as the device, its parts, or accessories. Remember that air bags inflate with great force. Do not place your device or accessories in the air bag deployment area.

Switch off your device before boarding an aircraft. The use of wireless devices in an aircraft may be dangerous to the operation of the aircraft and may be illegal.

Potentially explosive environments

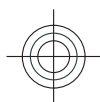
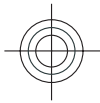
Switch off your device in any area with a potentially explosive atmosphere. Obey all posted instructions. Sparks in such areas could cause an explosion or fire resulting in bodily injury or death. Switch off the device at refuelling points such as near gas pumps at service stations. Observe restrictions in fuel depots, storage, and distribution areas; chemical plants; or where blasting operations are in progress. Areas with a potentially explosive atmosphere are often, but not always, clearly marked. They include areas where you would be advised to turn off your vehicle engine, below deck on boats, chemical transfer or storage facilities and where the air contains chemicals or particles such as grain, dust, or metal powders. You should check with the manufacturers of vehicles using liquefied petroleum gas (such as propane or butane) to determine if this device can be safely used in their vicinity.

Certification information (SAR)

This mobile device meets guidelines for exposure to radio waves.

Your mobile device is a radio transmitter and receiver. It is designed not to exceed the limits for exposure to radio waves recommended by international guidelines. These guidelines were developed by the independent scientific organisation ICNIRP and include safety margins designed to assure the protection of all persons, regardless of age and health.

The exposure guidelines for mobile devices employ a unit of measurement known as the Specific Absorption Rate or SAR. The SAR limit stated in the ICNIRP guidelines is 2.0 watts/kilogram (W/kg) averaged over 10 grams of tissue. Tests for SAR are conducted using standard operating positions with the device transmitting at its highest certified power level in all tested frequency bands. The actual SAR level of an operating device can be below the maximum value because the device is designed to use only the power required to reach the network. That amount changes depending on a number of factors such as how close you are to a network base station.



The highest SAR value under the ICNIRP guidelines for use of the device at the ear is 0.56 W/kg.

Use of device accessories may result in different SAR values. SAR values may vary depending on national reporting and testing requirements and the network band. Additional SAR information may be provided under product information at www.nokia.com.

Your mobile device is also designed to meet the requirements for exposure to radio waves established by the Federal Communications Commission (USA) and Industry Canada. These requirements set a SAR limit of 1.6 W/kg averaged over one gram of tissue. The highest SAR value reported under this standard during product certification for use at the ear is 0.93 W/kg and when properly worn on the body is 1.23 W/kg.

Feature-specific information

Use of the Mail for Exchange is limited to over-the-air synchronisation of PIM information between the Nokia device and the authorised Microsoft Exchange server.



Note: Using WLAN may be restricted in some countries. For example, in France, you are only allowed to use WLAN indoors. For more information, contact your local authorities.

Do not connect products that create an output signal as this may cause damage to the device. Do not connect any voltage source to the Nokia AV connector. If you connect an external device or headset, other than those approved by Nokia for use with this device, to the Nokia AV connector, pay special attention to volume levels.

Copyright and other notices

DECLARATION OF CONFORMITY

CE 0434 ⓘ

Hereby, NOKIA CORPORATION declares that this RM-626 product is in compliance with the essential requirements and other relevant provisions of Directive 1999/5/EC. A copy of the Declaration of Conformity can be found at www.nokia.com/phones/declaration_of_conformity/.

© 2010 Nokia. All rights reserved.

Nokia, Nokia Connecting People, Eseries, Nokia Original Accessories logo, and Ovi are trademarks or registered trademarks of Nokia Corporation. Nokia tune is a sound mark of Nokia Corporation. Other product and company names mentioned herein may be trademarks or tradenames of their respective owners.

Reproduction, transfer, distribution, or storage of part or all of the contents in this document in any form without the prior written permission of Nokia is prohibited. Nokia operates a policy of continuous development. Nokia reserves the right to make changes and improvements to any of the products described in this document without prior notice.

HDMI

HDMI and the HDMI Logo are trademarks or registered trademarks of HDMI Licensing LLC.

'Dolby' is a trademark of Dolby Laboratories.

Manufactured under license from Dolby Laboratories.



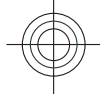
Java and all Java-based marks are trademarks or registered trademarks of Sun Microsystems, Inc.

This product is licensed under the MPEG-4 Visual Patent Portfolio License (i) for personal and noncommercial use in connection with information which has been encoded in compliance with the MPEG-4 Visual Standard by a consumer engaged in a personal and noncommercial activity and (ii) for use in connection with MPEG-4 video provided by a licensed video provider. No license is granted or shall be implied for any other use. Additional information, including that related to promotional, internal, and commercial uses, may be obtained from MPEG LA, LLC. See <http://www.mpegla.com>.

To the maximum extent permitted by applicable law, under no circumstances shall Nokia or any of its licensors be responsible for any loss of data or income or any special, incidental, consequential or indirect damages howsoever caused.

The contents of this document are provided "as is". Except as required by applicable law, no warranties of any kind, either express or implied, including, but not limited to, the implied warranties of merchantability and fitness for a particular

www.nokia.com/support



purpose, are made in relation to the accuracy, reliability or contents of this document. Nokia reserves the right to revise this document or withdraw it at any time without prior notice.

Reverse engineering of software in the device is prohibited to the extent permitted by applicable law. Insofar as this user guide contains any limitations on Nokia's representations, warranties, damages and liabilities, such limitations shall likewise limit any representations, warranties, damages and liabilities of Nokia's licensors.

The availability of products, features, applications and services may vary by region. For more information, contact your Nokia dealer or your service provider. This device may contain commodities, technology or software subject to export laws and regulations from the US and other countries. Diversion contrary to law is prohibited.

FCC/INDUSTRY CANADA NOTICE

Your device may cause TV or radio interference (for example, when using a telephone in close proximity to receiving equipment). The FCC or Industry Canada can require you to stop using your telephone if such interference cannot be eliminated. If you require assistance, contact your local service facility. This device complies with part 15 of the FCC rules. Operation is subject to the following two conditions: (1) This device may not cause harmful interference, and (2) this device must accept any interference received, including interference that may cause undesired operation. Any changes or modifications not expressly approved by Nokia could void the user's authority to operate this equipment.

Some operations and features are SIM card and/or network dependent, MMS dependent, or dependent on the compatibility of devices and the content formats supported. Some services are subject to a separate charge.

9223790/Issue 1 EN

