

Nokia E7-00 User Guide

Contents**Safety****5****Get started****6**

Keys and parts	6
Change the volume of a call, song, or video	10
Lock or unlock the keys and screen	10
Flashlight	11
Insert or remove the SIM card	11
Charge your device	12
Antenna locations	14
Headset	15
Switch the device on or off	15
Use your device for the first time	16
Nokia account	16
Device set-up	17
Copy contacts or pictures from your old device	17
Access codes	18
Use the in-device user guide	19

Install Nokia Ovi Suite on your PC**19****Basic use****21**

Touch screen actions	21
Interactive home screen elements	23
Switch between open applications	24
Write text	25
Keyboard shortcuts	30
Display indicators	30
Set the notification light to blink for missed calls or messages	32
Search in your device and on the internet	32
Use your device offline	32
Prolong battery life	33

Personalisation and Ovi Store**34**

Profiles	34
----------	----

Change your theme	36
Home screen	36
Organise your applications	39
Ovi Store	39

Telephone**42**

Call a phone number	42
Search for a contact	42
Call a contact	43
Make a video call	43
Make a conference call	44
Call the numbers you use the most	45
Use your voice to call a contact	45
Make calls over the internet	46
Call the last dialled number	47
Record a phone conversation	47
Turn to silence	47
View your missed calls	48
Call your voice mailbox	48
Divert calls to your voice mailbox or another phone number	48
Prevent making or receiving calls	49
Allow calls only to certain numbers	50
Video sharing	50

Contacts**52**

About Contacts	52
Save phone numbers and mail addresses	52
Save a number from a received call or message	53
Contact your most important people quickly	53
Add a picture for a contact	53
Set a ringing tone for a specific contact	54
Send your contact information using My Card	54
Create a contact group	54
Send a message to a group of people	55
Copy contacts from the SIM card to your device	55

Back up your contacts to Ovi by Nokia	55	Share your location in your status update	66
Messaging	56	Contact a friend from a social networking service	67
About Messaging	56	Add an event to your device calendar	67
Send a message	56	Camera	68
Send an audio message	57	About the camera	68
Receive messages	57	Take a picture	68
View a conversation	58	Save location information to your pictures and videos	68
Listen to a text message	58	Take a picture in the dark	69
Change language	59	Picture and video tips	69
Mail	59	Record a video	70
About Mail	59	Send a picture or video	70
Get a free mail account from Ovi by Nokia	60	Share a picture or video directly from the camera	71
Add a mailbox	60	Your pictures and videos	71
Read mail	60	Photos	71
Send a mail	61	Edit the pictures you have taken	74
Respond to a meeting request	61	Video editor	75
Open mail from the home screen	62	Print a picture you have taken	76
Internet	62	View pictures and videos on a TV	76
About the web browser	62	Connect your device to your home theatre	78
Browse the web	62	Videos and TV	79
Add a bookmark	63	Videos	79
Subscribe to a web feed	63	Watch Web TV	80
Discover nearby events	64	Music and audio	80
Unreadable characters while browsing the web	64	Music player	80
Social networks	64	Buy music from Nokia's Ovi Music	83
About Social	64	Protected content	83
See your friends' status updates in one view	65	Record sounds	83
Post your status to social networking services	65	FM radio	83
Link your online friends to their contact information	65	Maps	85
See your friends' status updates on the home screen	66	Maps overview	85
Upload a picture or video to a service	66	My position	86
		Search	90

4 Contents

Favourites	91	Find more help	126
Check in	94	Support	126
Drive and Walk	95	Troubleshooting	126
Give feedback on Maps	99	If your device stops responding	126
Report incorrect map information	99	Restore original settings	127
Time management	100	What to do when the memory is full?	127
Clock	100	Message indicator blinking	127
Calendar	102	A contact appears twice in the contacts list	127
Office	105	Unreadable characters while browsing the web	128
Quickoffice	105	Prepare your device for recycling	128
Read PDF documents	107	Protect the environment	128
Calculator	107	Save energy	128
Write notes	108	Recycle	128
Translate words from one language to another	108	Product and safety information	129
Open or create zip files	109	Index	136
Access your company intranet	109		
Chat with your colleagues	109		
Connectivity	109		
Internet connections	109		
Wireless LAN	110		
Bluetooth	112		
USB data cable	115		
VPN connections	116		
Close a network connection	117		
Store your files on a remote drive	117		
Device management	118		
Keep your device software and applications up to date	118		
Manage files	119		
Increase available memory so you can add more content	121		
Manage applications	121		
Synchronise content	122		
Copy contacts or pictures between devices	124		
Protect your device	124		

Safety

Read these simple guidelines. Not following them may be dangerous or illegal. Read the complete user guide for further information.

SWITCH OFF IN RESTRICTED AREAS



Switch the device off when mobile phone use is not allowed or when it may cause interference or danger, for example, in aircraft, near medical equipment, fuel, chemicals, or blasting areas.

ROAD SAFETY COMES FIRST



Obey all local laws. Always keep your hands free to operate the vehicle while driving. Your first consideration while driving should be road safety.

INTERFERENCE



All wireless devices may be susceptible to interference, which could affect performance.

QUALIFIED SERVICE



Only qualified personnel may install or repair this product.

KEEP YOUR DEVICE DRY



Your device is not water-resistant. Keep it dry.

GLASS PARTS



The front cover of the device is made of glass. This glass can break if the device is dropped on a hard surface or receives a substantial impact. If the glass breaks, do not touch the glass parts of the device or attempt to remove the broken glass from the device. Stop using the device until the glass is replaced by qualified service personnel.

PROTECT YOUR HEARING

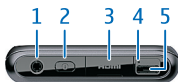



Listen to a headset at a moderate level, and do not hold the device near your ear when the loudspeaker is in use.

Get started

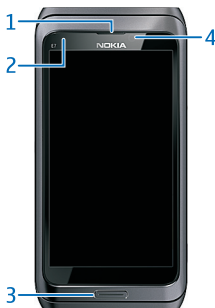
Keys and parts

Top



- 1 Nokia AV connector (3.5 mm)
- 2 Power key 
- 3 HDMI™ connector
- 4 Charging indicator
- 5 USB connector

Front



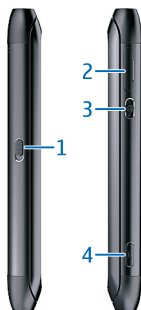
- 1 Earpiece
- 2 Light sensor
- 3 Menu key
- 4 Front camera


Back



- 1 Camera flash
- 2 Back camera
- 3 Loudspeaker
- 4 Microphone

Sides



- 1 Key lock switch/Flashlight key
- 2 SIM card slot
- 3 Volume/Zoom key
- 4 Camera key 

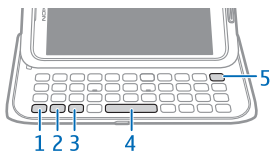
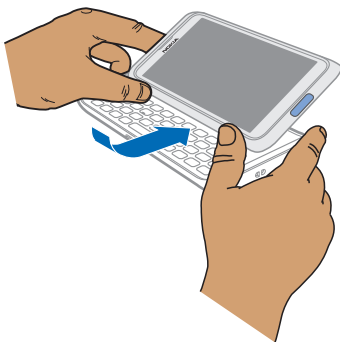
Bottom






1 Microphone

Keyboard

Your device has a full keyboard. To open the keyboard, push the touch screen up. The display rotates automatically from portrait to landscape when you open the keyboard.



- 1  Function key. To insert special characters printed at the top of keys, press the function key, and then press the corresponding key. To enter several special characters in a row, press the function key twice. To return to normal mode, press the function key.
- 2  Shift key. To switch between the upper and lower case modes, press the shift key twice. To enter a single upper case letter in lower case mode, or a single lower case letter in upper case mode, press the shift key, and then press the desired alphabet key.

- 3 Sym key. To insert special characters not shown on the keyboard, press the sym key, and select the desired character. To change the writing language, press and hold the shift key, and then press the sym key, and select the desired language.
- 4 Space key
- 5  Backspace key. To delete a character, press the backspace key. To delete several characters, press and hold the backspace key.

Insert a variation of a letter

You can insert, for example, letters with accents. To insert á, press and hold the sym key, and then press A repeatedly, until the desired letter is displayed. The order and availability of letters depends on the selected writing language.

Insert a number or special character that is printed at the top of a key

Press and hold the desired key.

HDMI adapter

Share your favourite pictures and high-definition videos, and browse the web directly on your TV. Connect the adapter to your device, and then connect any compatible HDMI cable (available separately), to see it all on the big screen.



USB OTG adapter

Connect the USB On-The-Go (OTG) adapter to browse a compatible USB memory stick or drive. You can then copy your pictures, videos, documents, and other content between your device and the external memory. It's an easy way to back up your essential files.



Change the volume of a call, song, or video

Use the volume key.

You can change the volume during a call or when an application is active.

The built-in loudspeaker allows you to speak and listen from a short distance without having to hold the device to your ear.

Activate or deactivate the loudspeaker during a call

Select  or .

Lock or unlock the keys and screen

To avoid accidentally making a call when your device is in your pocket or bag, lock the keys and screen of your device.

Slide the key lock switch.



Tip: If the key lock switch is out of reach, to unlock the device, press the menu key, and select **Unlock**.

Set the keys and screen to lock automatically

1 Select **Menu > Settings and Phone > Display > Screen/keylock time-out**.

- 2 Define the length of time after which the keys and screen are locked automatically.

Flashlight

The camera flash can be used as a flashlight. To switch the flashlight on or off, slide and hold the key lock switch for two seconds.

The flashlight can only be used when you are on the home screen. You can switch the flashlight on also when you are on the home screen and the keys and screen or the device is locked.

Do not shine the flashlight in anyone's eyes.

Insert or remove the SIM card

Do not attach any stickers to your SIM card.

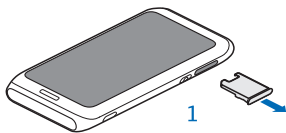


Important: Do not use a mini-UICC SIM card, also known as a micro-SIM card, a micro-SIM card with an adapter, or a SIM card that has a mini-UICC cutout (see figure) in this device. A micro SIM card is smaller than the standard SIM card. This device does not support the use of micro-SIM cards and use of incompatible SIM cards may damage the card or the device, and may corrupt data stored on the card.

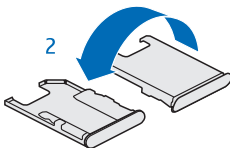


Insert the SIM card

- 1 Switch the device off, and remove the SIM card holder from the device.

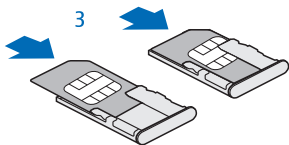


- 2 Turn the SIM card holder over.

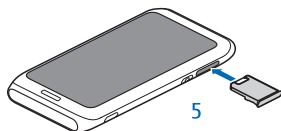


12 Get started

- 3 Make sure the contact area is facing up, and insert the SIM card into the SIM card holder.



- 4 Turn the SIM card holder over, and insert it back into the device.



Remove the SIM card

- 1 Switch the device off.
- 2 Remove the SIM card holder from the device.
- 3 Remove the SIM card.
- 4 Turn the SIM card holder over.
- 5 Insert the SIM card holder back into the device.

Charge your device About the battery

Your device has an internal, nonremovable, rechargeable battery. Use only Nokia approved chargers designated for this device. You can also use a compatible USB data cable to charge your device.

Do not attempt to remove the battery from the device. To replace the battery, take the device to your nearest authorised service facility.

Authorised retail points may also offer a battery replacement service.



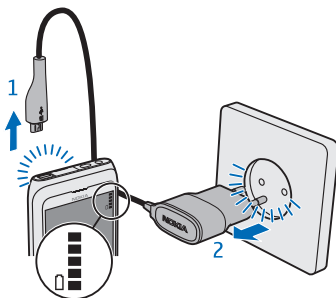
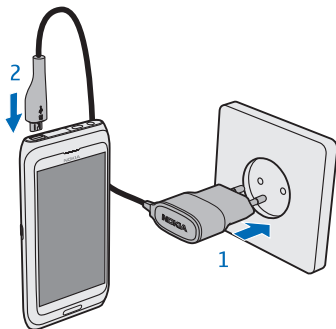
Important: Only qualified personnel or an authorised service facility should replace the battery. Unauthorised battery replacement may invalidate your warranty.

When your device is low on power, power save mode is activated. You may not be able to modify the settings of certain applications. To deactivate power save mode, press the power key **⏻**, and select **Deactivate power saving**.

Charge the battery

Your battery has been partially charged at the factory, but you may need to recharge it before you can switch on your device for the first time.

If the device indicates a low charge, do the following:



14 Get started

You do not need to charge the battery for a specific length of time, and you can use the device while it is charging.

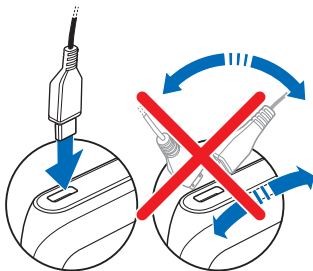
If the battery is completely discharged, it may take several minutes before the charging indicator is displayed or before any calls can be made.

If the battery has not been used for a long time, to begin charging, you may need to connect the charger, then disconnect and reconnect it.

Charge the battery over USB

Battery low, but you don't have a charger with you? You can use a compatible USB cable to connect to a compatible device, such as a computer.

To avoid breaking the charger connector, be careful when connecting or disconnecting the charger cable.



If connected to a computer, USB can synchronise your device while charging.

Charging over USB can take longer to start, and may not work if you connect through a non-powered USB hub. Your device charges more quickly when connected to a wall outlet.

When the battery is charging, the charging indicator light next to the USB connector is lit. When the battery charge is low, the charging indicator light flashes. It may take a while for charging to start.

Antenna locations

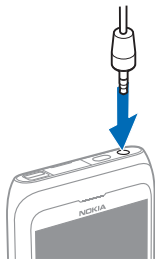
Avoid touching the antenna area while the antenna is in use. Contact with antennas affects the communication quality and may reduce battery life due to higher power level during operation.



The antenna area is highlighted.


Headset

You can connect a compatible headset or compatible headphones to your device.




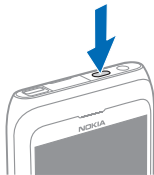
Switch the device on or off

Switch on

Press and hold the power key  until the device vibrates.

Switch off

Press and hold the power key .



Use your device for the first time

Your device guides you through the initial setup when you insert your SIM card and switch your device on for the first time. To use all of Nokia's Ovi services, create a Nokia account. You can also copy your contacts and other content from your previous device, and subscribe to receive helpful tips and tricks.

To create a Nokia account, you need an internet connection. For information about data transmission charges, contact your service provider. If you can't connect to the internet, you can create an account later.

Tip: To create and manage your Nokia account on the internet, go to www.ovi.com.

If you already have a Nokia account, sign in.

Tip: Forgotten your password? You can request it to be sent to you in a mail or text message.

Use the Phone switch application to copy your content, such as:

- Contacts
- Messages
- Pictures and videos
- Personal settings

When you set up your mail account, you can set your inbox to be displayed on your home screen, so you can easily check your mail.

If you need to make an emergency call during the setup phase, press the menu key.

Nokia account

When you switch on your device for the first time, your device guides you through creating a Nokia account.


With your Nokia account, you can, for example:

- Access all of Nokia's Ovi services with a single user name and password, both on your device and a compatible computer
- Download content from Ovi services
- Save details about your device model and contact information. You can also add your payment card details.
- Save your important walking and driving routes to Ovi Maps






To learn more about Nokia account and Ovi services, go to www.ovi.com.

To create a Nokia account later, use your device to access an Ovi service, and you are prompted to create an account.

Device set-up

To define some basic settings for your device, select the Phone setup shortcut  that is on one of your home screens. To switch between home screens, swipe left or right.

You can do the following:

-  Copy contacts, pictures, and other content from your previous Nokia device
-  Personalise your device, by changing the ringtone and visual theme
-  Set up mail
-  Update your device software
-  Modify slide handling settings

To define the settings later, you can also select **Menu > Applications > Tools > Phone setup**.

The available options may vary.

Copy contacts or pictures from your old device

Want to copy important information from your previous compatible Nokia device and start using your new device quickly? Use the Phone switch application to copy, for example, contacts, calendar entries, and pictures to your new device, free of charge.

Your previous Nokia device needs to support Bluetooth.

Select **Menu > Applications > Tools > Phone setup and Data transfer**.



If your previous Nokia device does not have the Phone switch application, your new device sends it in a message using Bluetooth. To install the application, open the message in your previous device, and follow the instructions.

- 1 Select the device you want to connect to, and pair the devices. Bluetooth needs to be activated.
- 2 If the other device requires a passcode, enter the passcode. The passcode, which you can define yourself, must be entered in both devices. The passcode in some devices is fixed. For details, see the user guide of the device.
The passcode is valid only for the current connection.
- 3 Select the content and **OK**.

Access codes

PIN or PIN2 code (4-8 digits)	<p>These protect your SIM card against unauthorised use or are required to access some features.</p> <p>You can set your device to ask for the PIN code when you switch it on.</p> <p>If not supplied with your SIM card or you forget the codes, contact your service provider.</p> <p>If you enter the code incorrectly three times in a row, you need to unblock the code with the PUK or PUK2 code.</p>
PUK or PUK2 code (8 digits)	<p>These are required to unblock a PIN or PIN2 code.</p> <p>If not supplied with your SIM card, contact your service provider.</p>

IMEI number (15 digits)	This is used to identify valid devices in the network. The number can also be used to block, for example, stolen devices. To view your IMEI number, dial *#06# .
Lock code (security code) (min. 4 digits or characters)	This helps you protect your device against unauthorised use. You can set your device to ask for the lock code that you define. Keep the code secret and in a safe place, separate from your device. If you forget the code and your device is locked, your device will require service. Additional charges may apply, and all the personal data in your device may be deleted. For more information, contact a Nokia Care Point or your device dealer.

Use the in-device user guide



Select Menu > Applications > User guide.

Open the user guide from an application

Select **Options** > **User guide**. This is not available for every application.

Search the user guide

When the user guide is open, select **Options** > **Search**, and enter a letter or a word in the search field.

Switch between the user guide and an application

Press and hold the menu key, swipe left or right, and select the desired application.



indicates a link to a web page. Links to related topics may be at the end of instructions.


Install Nokia Ovi Suite on your PC

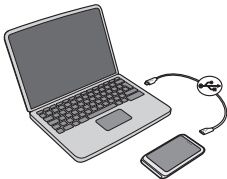
With the Nokia Ovi Suite PC application, you can manage content on your device, and keep it in sync with your computer. You can also update your device with the latest software, and download maps.

Download the latest version of Nokia Ovi Suite from www.ovi.com/suite to your computer.

20 Install Nokia Ovi Suite on your PC

If your computer can't connect to the internet, to install Nokia Ovi Suite from your device memory:

- 1 Use a compatible USB data cable to connect your device to your computer.
If you are using Windows XP or Windows Vista on your computer, set the USB mode of your device to **Mass storage**. To set the USB mode on your device, select the notification area in the top right corner, and select  > **Mass storage**.
Your device mass memory appears as a removable disk on your PC.



- 2 On your computer, select **Install Nokia Ovi Suite**.



If the installation window does not open automatically, open the installation file manually. Select **Open folder to view files**, and double-click **Install_Nokia_Ovi_Suite.exe**.



- 3 Follow the displayed instructions.
- 4 When the installation is complete, if you are using Windows XP or Windows Vista on your computer, check that the USB mode of your device is set to **Nokia Ovi Suite**.

To learn more about Nokia Ovi Suite, go to www.ovi.com/suite.

To check which operating systems Nokia Ovi Suite supports, go to www.nokia.com/support.

Basic use

Touch screen actions

To interact with the user interface, tap or tap and hold the touch screen.

Open an application or other screen element

Tap the application or element.

Access functions quickly

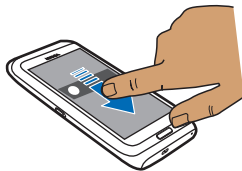
Tap and hold the item. A pop-up menu with available options opens. For example, to send an image or delete an alarm, tap and hold the image or alarm, and from the pop-up menu, select the appropriate option.



If you tap and hold the home screen, editing mode is activated.



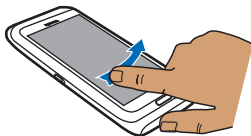
Drag an item



Tap and hold the item, and slide your finger across the screen. The item follows your finger.

You can drag items in the home screen or the main menu, when you have activated editing mode.

Swipe



Place a finger on the screen, and steadily slide your finger in the desired direction. For example, when you are viewing a picture, to view the next picture, swipe left.

Scroll in a list or menu

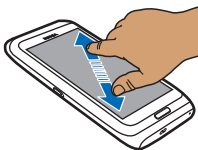
Place your finger on the screen, slide it quickly up or down the screen, then lift your finger. The content of the screen scrolls with the speed and direction it had at the

moment of release. To select an item from a scrolling list and to stop the movement, tap the item.



Zoom in

Place two fingers on an item, such as a picture or web page, and slide your fingers apart.



Zoom out

Place two fingers on the item, and slide your fingers together.

Tip: You can also tap the item twice to zoom in or out.

Interactive home screen elements

The home screen elements are interactive. For example, you can change the date and time, set alarms, write calendar entries, or edit the profiles directly on the home screen.



Set an alarm

Select the clock (1).

Activate or edit profiles

Select the profile (2).

View or edit your schedule

Select the date (3).

View missed calls or unread messages

Select the notification area (4).

View available WLANs or manage Bluetooth connections

Select the notification area (4).

Modify the connectivity settings

Select the notification area (4) and .

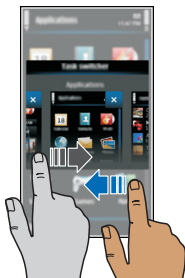
In most other views, you can select the notification area (4), and do the following:


- Modify the connectivity settings
- Open the clock, and set an alarm
- View the battery status, and activate power saving mode
- View notifications of missed calls or unread messages
- Open the WLAN wizard, and connect to a WLAN
- Manage Bluetooth connections

Switch between open applications

You can see which applications and tasks are open in the background, and switch between them.

Press and hold the menu key, swipe left or right, and select the desired application.



Applications running in the background increase the demand on battery power and use memory. To close an application that you are not using, select .

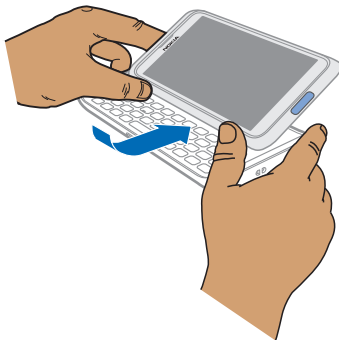
Tip: To close all open applications, select and hold the task switcher, and from the pop-up menu, select **Close all**.

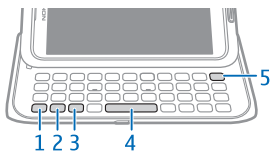
Write text

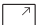

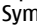


Keyboard input

Keyboard

Your device has a full keyboard. To open the keyboard, push the touch screen up. The display rotates automatically from portrait to landscape when you open the keyboard.





- 1  Function key. To insert special characters printed at the top of keys, press the function key, and then press the corresponding key. To enter several special characters in a row, press the function key twice. To return to normal mode, press the function key.
- 2  Shift key. To switch between the upper and lower case modes, press the shift key twice. To enter a single upper case letter in lower case mode, or a single lower case letter in upper case mode, press the shift key, and then press the desired alphabet key.
- 3  Sym key. To insert special characters not shown on the keyboard, press the sym key, and select the desired character. To change the writing language, press and hold the shift key, and then press the sym key, and select the desired language.
- 4  Space key
- 5  Backspace key. To delete a character, press the backspace key. To delete several characters, press and hold the backspace key.

Insert a variation of a letter

You can insert, for example, letters with accents. To insert á, press and hold the sym key, and then press A repeatedly, until the desired letter is displayed. The order and availability of letters depends on the selected writing language.

Insert a number or special character that is printed at the top of a key

Press and hold the desired key.

Touch input

Enter text with the virtual keyboard

Use the virtual keyboard

To activate the virtual keyboard, select a text input field. You can use the virtual keyboard both in landscape and portrait mode.



- 1 Virtual keyboard
- 2 Close key - Close the virtual keyboard.
- 3 Shift and caps lock key - To enter an upper case character when writing in lower case, or vice versa, select the key before entering the character. To activate caps lock mode is activated, select the key twice. A line under the key indicates that caps lock mode is activated.
- 4 Character range - Select the desired character range, such as numbers or special characters.
- 5 Arrows keys - Move the cursor left or right.
- 6 Space bar - Insert a space.
- 7 Input menu - Activate predictive text input, or change the writing language.
- 8 Enter key - Move the cursor to the next row or text input field. Additional functions are based on the current context. For example, in the web address field of the web browser, it acts as the Go icon.
- 9 Backspace key - Delete a character.

Switch between the virtual keyboard and keypad in portrait mode



Select  > Alphanumeric keypad or QWERTY keyboard.

Add an accent to a character

Select and hold the character.

Activate predictive text input with the virtual keyboard

Predictive text input may not be available in all languages.

- 1 Select  > **Input options** > **Activate prediction**.  is displayed.
- 2 Start writing a word. Your device suggests possible words as you write. When the correct word is displayed, select the word.
- 3 If the word is not in the dictionary, the device suggests an alternative word from the dictionary. To add the new word to the dictionary, select the word you have written.

Deactivate predictive text input mode

Select  > **Input options** > **Deactivate prediction**.

Modify the text input settings

Select  > **Input options** > **Settings**.

Enter text with the virtual keypad

Use the virtual keypad

If you prefer to use the alphanumeric keypad when writing in portrait mode, you can switch from the virtual keyboard to the virtual keypad.

- 1 Select a text input field.
- 2 Select  > **Alphanumeric keypad**.



- 1 Number keys
- 2 * - Enter a special character, or when predictive text input mode is activated and the word underlined, cycle through the word candidates.
- 3 Shift key - Change the character case. To activate or deactivate predictive text input mode, quickly select the key twice. To switch between the letter and number modes, select and hold the key.
- 4 Close key - Close the virtual keypad.
- 5 Arrow keys - Move the cursor left or right.
- 6 Input menu - Activate predictive text input, change the writing language, or switch to the virtual keyboard.
- 7 Backspace key - Delete a character.
- 8 Text input indicator (if available) - Indicates the character case, and if letter or number mode or predictive text input mode is activated.

Activate traditional text input with the virtual keypad

Quickly select # twice.

Enter a character

- 1 Select a number key (1-9) repeatedly, until the desired character is displayed. There are more characters available than are visible on the key.

- 2 If the next letter is located on the same key, wait until the cursor is displayed or move the cursor forward, and select the key again.

Insert a space


Select **0**.

Move the cursor to the next line

Quickly select **0** three times.

Activate predictive text input with the virtual keypad

Predictive text input is based on a built-in dictionary to which you can add new words. Predictive text input is not available for all languages.

- 1 Select  > **Activate predictive text**.
- 2 To write the desired word, use the keys 2-9. Select each key once for each letter. For example, to write Nokia when the English dictionary is selected, select **6** for N, **6** for o, **5** for k, **4** for i, and **2** for a.
The word suggestion changes after each key selection.
- 3 If the word is not correct, select ***** repeatedly, until the correct match is displayed. If the word is not in the dictionary, select **Spell**, and enter the word using traditional text input mode, and select **OK**.
If **?** is displayed after the word, the word is not in the dictionary. To add a word to the dictionary, select *****, enter the word using traditional text input mode, and select **OK**.
- 4 To insert a space, select **0**. To insert a common punctuation mark, select **1**, and then select ***** repeatedly, until the correct punctuation mark is displayed.
- 5 Start writing the next word.

Deactivate predictive text input

Quickly select **#** twice.

Define the writing language

Select **Menu** > **Settings and Phone** > **Touch input** > **Writing language**.

Change the language when writing

Select  > **Input options** > **Writing language** or  > **Writing language**.

The available options may vary.

Keyboard shortcuts

Shortcuts can make the use of the applications more efficient.


General shortcuts





Ctrl + C	Copy text.
Ctrl + X	Cut text.
Ctrl + V	Paste text.
Shift + Sym	Change the writing language.
Ctrl + A	Select all.
Ctrl + B	Use bold font.

Mail shortcuts






C	Create a new message.
R	Reply to a message.
A	Reply to all.
F	Forward a message.
D	Delete a message.
I	Collapse or expand the message list.
L	Mark a message with a flag.
M	Move a message to a different folder.
N	Go to the next message.
P	Go to the previous message.
S	Search for a message.
U	Mark a message as read or unread.
Z	Synchronise the mail account.
H	Open the in-device user guide.

Display indicators**General indicators**



 The touch screen and keys are locked.

-  The device alerts silently for incoming calls or messages.
-  An alarm is set.
-  A timed profile is activated.
-  You have a missed calendar event.




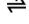

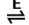

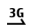
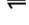
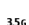
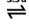





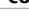
Call indicators

-  Someone has tried to call you.
-  You are using your second phone line (network service).
-  Incoming calls are diverted to another number (network service). If you have two phone lines, a number indicates the active line.
-  Your device is ready for an internet call.
-  A data call is active (network service).



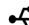
Messaging indicators

-  You have unread messages. If the indicator is blinking, your Inbox folder may be full.
-  Messages are waiting to be sent in the Outbox folder.

Network indicators

-  Your device is connected to a GSM network (network service).
-  Your device is connected to a 3G network (network service).
-  A GPRS data connection (network service) is open.  indicates that the connection is on hold and  that a connection is opening or closing.
-  An EGPRS data connection (network service) is open.  indicates that the connection is on hold and  that a connection is being established.
-  A 3G data connection (network service) is open.  indicates that the connection is on hold and  that a connection is being established.
-  An HSPA data connection (network service) is open.  indicates that the connection is on hold and  that a connection is being established.
-  A WLAN connection is available.  indicates that the connection is encrypted and  that the connection is not encrypted.

Connectivity indicators

-  Bluetooth is active.  indicates that your device is sending data. If the indicator is blinking, your device is trying to connect to another device.
-  A USB cable is connected to your device.



An HDMI cable is connected to your device.

GPS is active.

The device is synchronising.

A compatible headset is connected to your device.

A compatible TV-out cable is connected to your device.


A compatible text phone is connected to your device.

Set the notification light to blink for missed calls or messages


Your device has a notification light in the menu key. When the light blinks, you have missed a call or a message has arrived.

Select **Menu > Settings and Phone > Notification lights > Notification light**.

Search in your device and on the internet

 You can search for items, such as messages, pictures, files, music, or videos stored in your device or on the internet.

- 1 Select **Menu > Applications > Search**.
- 2 Start entering a search word, and select from the proposed matches.
- 3 To search on the internet, select the internet search link at the end of the search results. You need an active internet connection.

Tip: You can add a search widget to the home screen. Tap and hold the home screen, and select  and the search widget from the list.

Use your device offline

In places where you do not want to make or receive calls, you may still access your calendar, contacts list, and offline games if you activate the offline profile. Switch the device off when mobile phone use is not allowed or when it may cause interference or danger.

On the home screen, select the profile and **Offline**.

When the offline profile is activated, your connection to the cellular network is closed. All radio frequency signals between the device and the cellular network are prevented. If you try to send a message, it is placed in the Outbox folder, and is sent only when another profile is activated.

You can also use your device without a SIM card. Switch the device off, and remove the SIM card. When you switch back on, the offline profile is activated.



Important: In the offline profile you cannot make or receive any calls, or use other features that require cellular network coverage. You may be able to call the official emergency number programmed into your device. To make calls, you must first change to another profile.

When the offline profile is activated, you can still connect to a WLAN to, for example, read your mail or browse the internet. You can also use Bluetooth.

Remember to comply with any applicable safety requirements.

Prolong battery life


If it seems you're always looking for a charger, there are steps you can take to reduce the power consumption of your device.

- Always charge the battery fully.
- When power saving mode is activated, device settings, such as **Network mode** and the screen saver, are optimised.

Activate power saving mode

Press the power key , and select **Activate power saving**. To deactivate power saving mode, press the power key , and select **Deactivate power saving**.

Close the applications you are not using

Press and hold the menu key, swipe until the desired application is displayed, and select .

Sounds, themes, and effects

- Mute unnecessary tones, such as key tones.
- Use wired headphones, rather than the loudspeaker.
- Change the length of the time-out period after which the device display switches off.

Set the length of the time-out period

Select **Menu** > **Settings and Phone** > **Display** > **Light time-out**.

Activate a dark theme and wallpaper

Select **Menu** > **Settings and Themes** > **General**. To change the wallpaper, on the home screen, select **Options** > **Change wallpaper**.

Deactivate background animation effects

Select Menu > Settings and Themes > General > Options > Theme effects > Off.

Decrease the brightness of the display

In the display settings, select **Brightness**.

Deactivate the Big clock screen saver

Select Menu > Settings and Themes > Screen saver > None.

Network use

- If you are listening to music or otherwise using your device, but do not want to make or receive calls, activate the offline profile.
- Set your device to check for new mail less frequently.
- Use a WLAN connection to connect to the internet, rather than a packet data (GPRS or 3G) connection.
- If your device is set to use both GSM and 3G networks (dual mode), the device uses more power when searching for the 3G network.

Set your device to use only the GSM network

Select Menu > Settings and Connectivity > Network > Network mode > GSM.

Deactivate Bluetooth when not needed

Select Menu > Settings and Connectivity > Bluetooth > Bluetooth > Off.

Stop your device scanning for available WLANs

Select Menu > Settings and Connectivity > WLAN > Options > Settings > Show WLAN availability > Never.

Establish a packet data (3G or GPRS) connection only when needed

Select Menu > Settings and Connectivity > Admin. settings > Packet data > Packet data connection > When needed.

Personalisation and Ovi Store

Profiles

About profiles

 Select Menu > Settings > Profiles.

Waiting for a call but can't let your phone ring? Your device has various settings groups called profiles, which you can personalise for different events and environments. You can also create your own profiles.

You can personalise the profiles in the following ways:

- Change the ringtone and message alert tones.
- Adjust the volume of the ringtone and key tones.
- Mute key tones and notification tones.
- Activate vibration alerts.
- Set the device to say the name of the contact who is calling.

Personalise your tones

You can personalise your device tones for each profile.

Select **Menu** > **Settings** > **Profiles**.

- 1 Select the desired profile.
- 2 Select **Personalise** and the desired option.

Tip: Download ringtones from Ovi Store. To learn more about Ovi Store, go to www.ovi.com.

Silence your device

When the silent profile is activated, all ringtones and alert tones are muted. Activate this profile when you are at the cinema or in a meeting.

On the home screen, select the profile and **Silent**.

Change your profile for meetings or outdoor use

When the meeting profile is activated, your device discreetly beeps once instead of ringing. When the outdoor profile is activated, the ringing tone is louder, so you won't miss a call in a noisy environment.

In the home screen, select the profile and **Meeting** or **Outdoor**.

Create a new profile

How can you make your device meet your needs at work or college or home? You can create new profiles for different situations, and give them appropriate names.

- 1 Select **Menu** > **Settings** > **Profiles and Options** > **Create new**.
- 2 Define your profile settings, and select **Profile name**.
- 3 Enter a name for the profile.


Set a timed profile

You can activate a profile until a set time, after which the previously used profile is activated.

Select **Menu** > **Settings** > **Profiles**.

- 1 Select the desired profile and **Timed**.
- 2 Set the time that you want the timed profile to expire at.

Change your theme

 With themes, you can change the colours and look of your display.

Select **Menu** > **Settings** > **Themes**.

Select **General** and a theme.

Some themes include background animation effects. To save battery power, select **General** > **Options** > **Theme effects** > **Off**.

Tip: Download themes from Nokia's Ovi Store. To learn more about Ovi Store, go to www.ovi.com.

Home screen

About the home screen

On the home screen, you can:

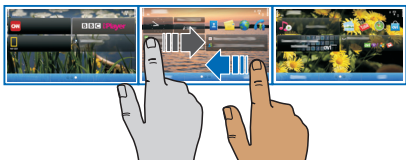
- See notifications of missed calls and received messages
- Open your favourite applications
- Control applications, such as the music player
- Add shortcuts for different features, such as writing a message
- View your favourite contacts, and quickly call or send messages to them

You can have more than one home screen page, for example, separate home screens for work and private life.

The home screen elements are interactive. For example, if you select the clock, the clock application opens.

Predefined home screens

Your device has separate home screens for business and personal needs, and a screen for your internet links. You can personalise the screens to your liking.



To switch to another home screen, swipe left or right. ● ● ● indicates the currently displayed home screen.

Personalise the home screen

Want to see your favourite landscape or pictures of your family in the home screen background? You can change this wallpaper, and rearrange items in the home screen, to personalise it to your liking.

Tip: If you have more than one home screen, you can switch between them also while editing, and personalise all your home screens at the same time.

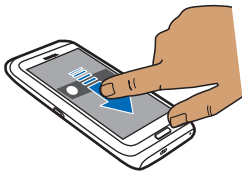
Change the wallpaper

- 1 Tap and hold the home screen.
- 2 Select **Options** > **Change wallpaper** > **Image**.
- 3 Select the desired picture.
- 4 Select **Done**.

Tip: Download more background images from Nokia's Ovi Store. To learn more about Ovi Store, go to www.ovi.com.

Rearrange items in the home screen


- 1 Tap and hold the home screen.
- 2 Drag and drop items to a new location.



- 3 Select **Done**.

Add a widget to the home screen

Interested in today's weather or what's currently in the news? You can add mini-applications (widgets) to your home screen, and see your most relevant information at a glance.

- 1 Tap and hold the home screen.
- 2 Select  and the desired widget from the list.
- 3 Select **Done**.

A widget can enhance the related application, and may also change the way the application works. For example, if you add a notification widget, received messages are notified in the widget.

Tip: To download more widgets, select **OVI**.

Using services or downloading content may cause transfer of large amounts of data, which may result in data traffic costs.

Some home screen widgets may connect to the internet automatically. To prevent this, select **Options > Widgets to offline mode**.

Remove a widget from the home screen

- 1 Tap and hold the home screen.
- 2 Select the widget, and from the pop-up menu, select **Remove**.
- 3 Select **Done**.

Add a shortcut to the home screen

Did you know that you can create shortcuts to your most used applications and features? You can add shortcuts to applications, web bookmarks, or actions, such as writing a message.

- 1 Tap and hold the home screen.
- 2 Select the shortcut widget and **Settings**.
- 3 Select the shortcut you want to define, and select **Bookmark** or **Application** and the desired item.
- 4 Select **Back > Done**.


Tip: To remove a shortcut, replace it with another one.

Tip: If you add empty shortcut widgets when editing a home screen, you can later define the shortcuts directly on the home screen.

Add your important contacts to the home screen

Add your most important contacts to the home screen, so you can quickly call or send messages to them.


The contacts need to be stored in your device memory.

- 1 In the Favourite contacts widget, select .
- 2 To mark the contacts to add to the home screen, select the desired contacts. You can add up to 20 contacts to the widget.

Call or send a message to a contact

In the widget, select the contact.

Remove a contact from the home screen

In the widget, select  and the contact to remove. The contact is deleted from the widget, but remains in your contacts list.

Organise your applications

Want to open your most used applications more quickly? In the main menu, you can organise your applications and hide less used applications in folders.

Press the menu key, and select **Options** > **Edit**.

Create a new folder

Select **Options** > **New folder**.

Move an application to a folder

Select and hold the application, and from the pop-up menu, select **Move to folder** and the new folder.

Tip: You can also drag and drop applications and folders.

Ovi Store

About Ovi Store



Select **Menu** > **Store**, and sign in to your Nokia account.

Did you know that you can personalise your device with more applications? Or download games, also free of charge? Browse the Ovi Store to find the latest content that is designed specifically for your device.

You can download:

- Games
- Applications
- Videos
- Themes and wallpapers
- Ringtones

You can also:

- Get content that is relevant to your tastes and location
- Share recommendations with your friends

To download from Ovi Store, you need a Nokia account.

When you sign in, you are offered content compatible with your device.

You can search for and download content directly on your mobile device, or browse Ovi Store on your compatible computer and send links to content to your mobile device as a text message.

Some items are free of charge; others you need to pay for with your credit card or on your phone bill. The availability of payment methods depends on your country of residence and your network service provider.

To learn more about Ovi Store, go to www.ovi.com.

Search Ovi Store

Check out the latest and most downloaded apps or games, and items recommended for you and your device. You can browse the different categories, or search for a specific item.

Select **Menu** > **Store**, and sign in to your Nokia account.

- 1 Select **Store menu** > **Search**.
- 2 Enter search words in the search field, and select **Go**.

When you view an item, related items are also displayed.

Tip: Did you find something in Ovi Store that you know your friends would be interested in? Send them a link!

Tip: To see what others have to say about an item, select the item. You can also see a description, the price, and the size of the download.

Download a game, application, or other item

Download free games, apps, or videos, or buy more content to your device! From Ovi Store, you can find content designed specifically for your device.

Select **Menu** > **Store**, and sign in to your Nokia account.

- 1 Select the item.
- 2 If the item has a price, select **Buy**. If the item is free, select **Download**.
- 3 You can pay with a credit or debit card, or, if available, on your phone bill.
To save your card information to your Nokia account, select **Save this card to my Nokia account**.
If your card information is already saved, to use a different payment method, select **Change billing details**.
- 4 To get a receipt of your purchase, select or enter a mail address.
- 5 Select **Confirm**.
- 6 When the download is complete, you can open or view the item, or continue browsing for more content. The content type determines where the item is stored in your mobile device. To change the default location, select **Account** > **Installation preferences** and the desired memory.

Tip: Use a WLAN connection to download larger files, such as games, applications, or videos.

Tip: To avoid entering your payment card details over and over when buying items from Ovi Store, save your details to your Nokia account. You can add more than one payment card, and choose which one to use when buying.

For more information on an item, contact the publisher of the item.

View your download queue

While an item is downloading, you can continue to browse for other content and add items to your download queue.

Select **Menu** > **Store**, and sign in to your Nokia account.

Select **Account**.

The status of currently downloading items is displayed in the New downloads section. One item is downloaded at a time, and pending items wait in your download queue.

Previously downloaded items are displayed in the My stuff section.

Tip: If you need to, for example, temporarily close your WLAN connection, select the downloading item, and in the details view, select **Pause**. To resume downloading, select **Resume**. Pause pending items individually.

If a download fails, you can re-download the item.

Write a review

Do you want to share your opinion on an item with other Ovi Store users? Write your own review, and rate the item.



You can post one review per item that you have downloaded.

- 1 Select the item and **Review**.
- 2 Write your review, rate the item, and select **Add review**.
If you want to edit your review, select **Edit review**.
- 3 To publish your review, select **Submit**.

Help us keep Ovi Store clean, and report if you find inappropriate content. Select **Report abuse** and the reason. Enter additional details, if needed.

Telephone

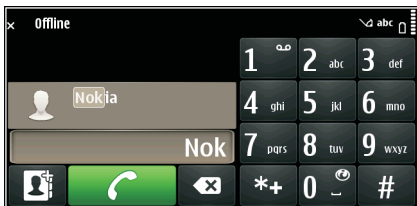
Call a phone number

- 1 On the home screen, select **Call** to open the dialler, and enter the phone number.
To enter the + character, used for international calls, select * twice.
- 2 To make the call, select .
- 3 To end the call, select .

Search for a contact

You can search for a contact you have saved in the contacts list.

In the home screen, open the keyboard, and start entering the contact's first or second name. You can also search by company name.



Deactivate contact search

In the dialler, select **Options** > **Contact search** > **Off**.

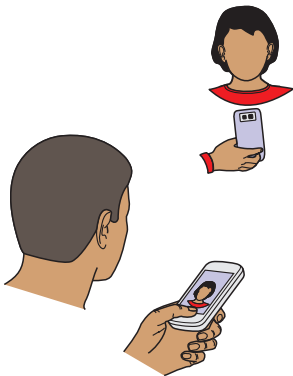
Call a contact

Select **Menu** > **Contacts**.

- 1 To search for a contact, enter the first letters or characters of the first or second name in the search field.
- 2 Select the contact.
- 3 In the contact card, select **Voice call**.
- 4 If the contact has more than one phone number, select the desired number.

Make a video call

Do you have friends or family that you don't see in person very often? For a face-to-face chat, why not make a video call to them?



Video calls are a network service, and to make a video call, you need to be in a 3G network.


For information on availability and costs, contact your service provider.

Video calls can only be made between two parties. Video calls cannot be made while another voice, video, or data call is active.

- 1 Select **Menu** > **Contacts**, and search for a contact.
- 2 Select the contact, and in the contact card, select **Video call**.

The camera on the front of your device is used by default for video calls. Starting a video call may take a while. If the call is not successful (for example, video calls are not supported by the network, or the receiving device is not compatible), you are asked if you want to make a normal call or send a message instead.

The video call is active when you see two videos, and hear the sound through the loudspeaker. The call recipient may deny video sending, and you only hear the voice of the caller, and may see an image or a grey screen.

- 3 To end the video call, select .

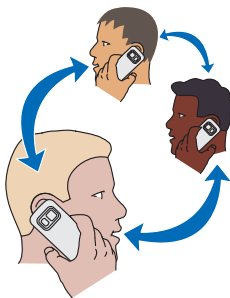
Send an image rather than live video


Select **Menu > Settings and Calling > Call > Image in video call.**

If you do not send live video, the call is still charged as a video call.

Make a conference call

Your device supports conference calls (network service) between a maximum of six participants, including yourself. Video conference calls are not supported.






- 1 Make a call to the first participant.
- 2 To make a call to another participant, select **Options > New call.** The first call is put on hold.
- 3 When the new call is answered, to add the first participant to the conference call, select .

Add a new participant to a conference call

Make a call to another participant, and add the new call to the conference call.

Have a private conversation with a conference call participant

- 1 Select .
- 2 Go to the participant, and select . The conference call is put on hold on your device. The other participants continue the conference call.
- 3 To return to the conference call, select .

Drop a participant from a conference call

Select , go to the participant, and select .

End an active conference call

Select .

Call the numbers you use the most

You can quickly call your friends and family when you assign your most-used phone numbers to the number keys of your device.

Select **Menu** > **Settings and Calling** > **Speed dialling**.

Assign a phone number to a number key

- 1 Select the number key to which you want to assign the phone number.
1 is reserved for the voice mailbox.
- 2 Select the phone number from your contacts list.

Remove or change a phone number assigned to a number key

Select and hold the assigned key, and from the pop-up menu, select **Remove** or **Change**.

Make a call

On the home screen, select **Call** to open the dialler, and select and hold the assigned number key.

Use your voice to call a contact

With the Voice commands application you can use your voice to make calls or control your device.

Voice commands are not dependent on the speaker's voice. Commands are automatically created by your device.



Note: Using voice tags may be difficult in a noisy environment or during an emergency, so you should not rely solely upon voice dialling in all circumstances.

When you use voice dialling, the loudspeaker is in use. Hold the device at a short distance away when you say the voice command.

- 1 In the home screen, select and hold **Call**. If a compatible headset with the headset key is attached, press and hold the headset key.
- 2 A short tone sounds, and **Speak now** is displayed. Say clearly the name that is saved for the contact.
- 3 The device plays a synthesised voice command for the recognised contact in the selected device language, and displays the name and number. To cancel the voice dialling, select **Quit**.

Listen to a voice command for a contact

- 1 Select a contact and **Options** > **Voice tag details**.
- 2 Select a contact detail.

If several numbers are saved for a name, you can say also the name and the number type, such as mobile or telephone.

Make calls over the internet

About internet calls

With the internet call network service, you can make and receive calls over the internet. Internet call services may support calls between computers, between mobile phones, and between a VoIP device and a traditional telephone.

Some internet call service providers allow free internet calls. For availability and connectivity costs, contact your internet call service provider.

To make or receive an internet call, you must be in the service area of a WLAN or have a packet data (GPRS) connection in a 3G network, and be signed in to an internet call service.

Install an internet call service

You can search for internet call services from Ovi Store. For details, go to www.ovi.com.

- 1 Download an installation widget for the internet call service.
- 2 To start the installation, select the installation widget.
- 3 Follow the displayed instructions.

When an internet call service has been installed, a tab for the service is displayed in the contacts list.

Make an internet call

When you are signed into an internet call service, you can make a call from the friends list or the contacts list.

Select **Menu** > **Contacts**.

Call a contact in the friends list


- 1 Open the internet call service tab, and sign in to an internet call service.
- 2 Select a contact from the friends list, and select **Internet call**.

Make an internet call to a phone number or SIP address

- 1 On the home screen, select **Call** to open the dialler, and enter the number.
- 2 Select **Options** > **Call** > **Internet call**.



Call the last dialled number

Trying to call someone, but they are not answering? It is easy to call them again. In the call log, you can see information about the calls you have made and received.

In the home screen, select **Call** to open the dialler, and select . To call the last dialled number, select the number from the list.

Record a phone conversation

With the Recorder application, you can record phone conversations.

- 1 During an active voice call, select **Menu** > **Office** > **Recorder**.
- 2 To start recording, select .
- 3 To stop recording, select . The sound clip is automatically saved to the Sound files folder in the File manager application.

Both parties hear a tone at regular intervals during the recording.

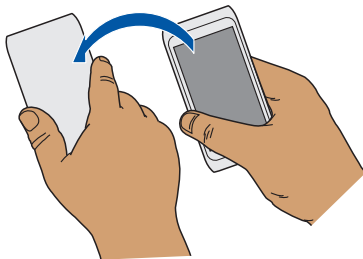
Turn to silence

If your device rings in a situation where you do not want to be disturbed, you can turn the device to silence the ringtone.

Activate the turn to silence feature

Select **Menu** > **Settings and Phone** > **Sensor settings** > **Silence calls** > **On**.

When your device rings, turn your device display down.





View your missed calls



In the home screen, you can see when you have missed calls. To view the phone number, select **Show**. The caller's name is displayed if stored in the contacts list.

Missed and received calls are logged only if supported by the network, and the device is switched on and within the network service area.

Call back the contact or number

Select the contact or number.

To view the missed calls list later, in the home screen, select **Call** to open the dialler, select , and open the missed calls tab .

Tip: To view missed calls quickly, in the home screen, select , and open the missed calls tab .

Call your voice mailbox

You can divert your incoming calls to your voice mailbox (network service). People can leave you a message, for example, when you have not answered the call.

In the home screen, select **Call** to open the dialler, and select and hold **1**.

Change the phone number of your voice mailbox

- 1 Select **Menu** > **Settings and Calling** > **Call mailbox**.
- 2 Select and hold a mailbox, and from the pop-up menu, select **Change number**.
- 3 Enter the number (obtained from your network service provider), and select **OK**.

Divert calls to your voice mailbox or another phone number

If you cannot answer your calls, you can divert incoming calls to your voice mailbox or another phone number.

Select **Menu** > **Settings and Calling** > **Call divert** > **Voice calls**.

Call divert is a network service. For details, contact your service provider.


Divert all voice calls to your voice mailbox

Select **All voice calls** > **Activate** > **To voice mailbox**.

Divert all voice calls to another phone number

- 1 Select **All voice calls** > **Activate** > **To other number**.
- 2 Enter the number, or select **Find** to use a number saved in your contacts list.

Several diverting options, such as **If busy** and **If not answered** can be active at the same time.

On the home screen,  indicates that all calls are diverted.

Call barring and call diverting cannot be active at the same time.

Prevent making or receiving calls

Sometimes you may want to restrict the calls that can be made or received with your device. With call barring (network service), you can, for example, restrict all outgoing international calls or incoming calls when you are abroad.

Select **Menu** > **Settings and Calling** > **Call barring**.

To modify the settings, you need the barring password from your service provider.

Prevent making calls

- 1 If an internet call service is installed, select **Mobile call barring**.
- 2 To prevent making any calls or international calls, select **Outgoing calls** or **International calls**. To prevent making international calls, but allow calls to your home country, select **International calls except to home country**.
- 3 Select **Activate**. Call barring affects all calls, including data calls.

Prevent receiving calls

- 1 If an internet call service is installed, select **Mobile call barring**.
- 2 To prevent receiving any calls or international calls when you are abroad, select **Incoming calls** or **Incoming calls when roaming**.
- 3 Select **Activate**.

Prevent anonymous internet calls

Select **Internet call barring** > **Anonymous call barring** > **On**.

Allow calls only to certain numbers

With the fixed dialling service, you can restrict calls, and only allow calls to certain phone numbers. For example, you can allow your children to call only family members or other key numbers.

Select **Menu > Contacts and Options > SIM numbers > Fixed dial contacts**.

Not all SIM cards support the fixed dialling service. You need your PIN2 code from your service provider.

Activate fixed dialling

Select **Options > Activate fixed dialling**. Enter the PIN2 code.

Select the people to whom calls are allowed

- 1 Select **Options > New SIM contact**.
- 2 Enter the PIN2 code.
- 3 Enter the contact name and phone number to which calls are allowed, and select **Done**. To add a contact from the contacts list to the fixed dialling list, select **Add from Contacts** and a contact.

To send a text message to a SIM contact while the fixed dialling service is active, you need to add the text message centre number to the fixed dialling list.

Video sharing

About video sharing

With video sharing (network service), you can share live or recorded video from your device to another compatible device, during a voice call.

When you activate video sharing, the loudspeaker is automatically activated. If you do not want to use the loudspeaker, you can use a compatible headset.

Video sharing requirements

To share video, both you and the recipient must:

- Be in a 3G network. If either of you move outside the 3G network, the voice call continues.
- Have the video sharing feature activated.
- Have person-to-person connections set up.

For more information on the service, 3G network availability, and fees associated with using this service, contact your service provider.

Set up video sharing

To set up video sharing, you need person-to-person and 3G connection settings.

A person-to-person connection is also known as a Session Initiation Protocol (SIP) connection. The SIP profile settings must be configured in your device before you can use video sharing. Contact your service provider for the SIP profile settings, and save them to your device. Your service provider may send you the settings in a configuration message or give you a list of the needed parameters.

Set up a person-to-person connection

- 1 Select **Menu** > **Settings and Connectivity** > **Admin. settings** > **SIP settings** and a SIP profile.
- 2 Enter the needed SIP profile settings.

Modify video sharing settings

Select **Menu** > **Settings and Connectivity** > **Video sharing**.

Use a 3G connection

For details about networks, contact your service provider.

Add a SIP address to a contact

- 1 Select **Menu** > **Contacts**.
- 2 Select a contact or create a new contact.
- 3 Select **Options** > **Edit**.
- 4 Select **Options** > **Add detail** > **Share video**.
- 5 Enter the SIP address in the format `username@domainname` (you can use an IP address instead of a domain name).

If you do not know the SIP address for the contact, you can use the phone number of the recipient, including the country code, to share video (if supported by the network service provider).

Share live or recorded video

During an active voice call, select **Options** > **Share video**.

- 1 To share live video, select **Live video**.
To share a video, select **Video clip**.
- 2 Select the desired SIP address or phone number that is stored in the contact card for the recipient. If the SIP address or phone number is not available, manually enter the details, and select **OK**. If entering a phone number, you need to enter the country code. The invitation is sent to the SIP address.

If you access another application while sharing a video, the sharing is paused.

Continue sharing

On the home screen, select **Options** > **Resume video sharing**.

Stop sharing video

Select **Stop**. To end the voice call, select . When you end the call, video sharing also ends.

Save automatically the live video you shared

Select **Menu** > **Settings and Connectivity** > **Video sharing** > **Video saving** > **On**.

Accept a video sharing invitation

Select **Yes**. Video sharing begins automatically.

Contacts

About Contacts



Select **Menu** > **Contacts**.

You can save and organise your friends' phone numbers, addresses, and other contact information. If you want to keep in touch with your most important contacts easily, you can add them to the home screen.

Save phone numbers and mail addresses


You can save your friends' phone numbers, mail addresses, and other information to your contacts list.

Select **Menu** > **Contacts**.

Add a contact to the contacts list

- 1 Select **Options** > **New contact**.
- 2 Select a field, and enter the details.

Edit contact information

- 1 Select a contact.
- 2 Open the contact card tab .
- 3 Select a contact detail.

Add details about a contact

Select a contact and **Options** > **Edit** > **Options** > **Add detail**.

Save a number from a received call or message

Have you received a call or a message from a person whose phone number is not yet saved in the contacts list? You can easily save the number in a new or existing contact list entry.

Save a number from a received call

- 1 Select **Menu** > **Applications** > **Log**.
- 2 Select **Recent calls** > **Received calls**.
- 3 Select and hold a phone number, and from the pop-up menu, select **Save to Contacts**.
- 4 Select whether you want to create a new contact list entry or update an existing one.

Save a number from a received message

- 1 Select **Menu** > **Messaging**.
- 2 Select **Inbox** and a message.
- 3 Select the phone number and **Save to Contacts**.
- 4 Select whether you want to create a new contact list entry or update an existing one.

Contact your most important people quickly

You can set your most important contacts as favourites. Your favourites are at the top of the contacts list, so you can contact them quickly.

Select **Menu** > **Contacts**.

Set a contact as a favourite

Select and hold a contact, and from the pop-up menu, select **Add to favourites**.

Remove a contact from favourites

Select and hold a contact, and from the pop-up menu, select **Remove from favourites**. The contact is not deleted from your standard contacts list.

Add a picture for a contact

Want to see quickly who is calling you? Add a picture for a specific contact.

Select **Menu** > **Contacts** and a contact.

- 1 Select the icon next to the contact's name, and from the pop-up menu, select **Add image**.
- 2 Select a picture from Photos.

Change or remove a picture

Select the picture, and from the pop-up menu, select **Change image** or **Remove image**.

The contacts must be stored in your device memory. To check which memory is in use, select **Options > Settings > Contacts to display**.

Set a ringing tone for a specific contact

Want to be able to hear that a particular person is calling you? You can set a ringing tone specifically for that person.

Select **Menu > Contacts**.

Set a ringing tone for a contact

- 1 Select a contact and **Options > Edit**.
- 2 Select the Ringtone field and a ringing tone.

Set a ringing tone for a contact group

- 1 Open the Groups tab.
- 2 Select and hold the title of a group, and from the pop-up menu, select **Ringtone**.
- 3 Select a ringing tone from the list.

The ringing tone only applies to the members of the group at the time that the ringing tone is set.

Send your contact information using My Card

My card is your electronic business card. With My card, you can send your contact information to others.

Select **Menu > Contacts**.

Send your contact information as a business card

Select and hold **My card**, and from the pop-up menu, select **Send as business card**.

Edit your contact information in My Card

Select **My card**, and the detail to edit.

Create a contact group

When you have created contact groups, you can send a message to several people at the same time. For example, you can assign the members of your family to one group.

Select **Menu > Contacts**.

- 1 Open the Groups tab.
- 2 Select **Options** > **New group**.
- 3 Enter a name for the group, and select **OK**.
- 4 Select the group and **Options** > **Add members**.
- 5 To mark the contacts you want to add to the group, select them.

Send a message to a group of people

Would you like to send a message to all your family members quickly? If you have assigned them to a group, you can send a message to all of them at the same time.

Select **Menu** > **Contacts**.

- 1 Open the Groups tab.
- 2 Select and hold a group title, and from the pop-up menu, select **Create message**.

Copy contacts from the SIM card to your device

If you have contacts stored on your SIM card, you can copy them to your device. You can add more details to contacts that are stored on your device, such as alternative phone numbers, addresses, or a picture.

Select **Menu** > **Contacts**.

Select **Options** > **SIM numbers** > **Copy all to phone**.

Tip: If you now have a contact twice in your contacts list, select **Options** > **Settings** > **Contacts to display**, and clear the **SIM memory** check box.

Back up your contacts to Ovi by Nokia

If you back up your contacts to Ovi by Nokia, you can easily copy your contacts to a new device. If your device is stolen or damaged, you can still access your contacts list online.

Select **Menu** > **Contacts and Options** > **Ovi sync**.

If you allow automatic synchronisation, all the changes you make in the contacts list are automatically backed up to Ovi by Nokia.

You need a Nokia account to use Ovi. If you do not have an account, create one at www.ovi.com. You are also prompted to create an account, if you access any Ovi service using your device.

If you use Ovi Sync to automatically synchronise your contacts with Ovi, do not allow contact synchronisation with any other service as there may be conflicts. Ovi Sync for contacts is not available if you have activated contacts synchronisation in Mail for Exchange.

Messaging

About Messaging



Select Menu > Messaging.

You can send and receive various kinds of messages:

- Text messages
- Audio messages
- Multimedia messages that contain pictures and videos
- Group messages

Messaging requires network support.

Send a message

With text and multimedia messages, you can quickly contact your friends and family. In a multimedia message, you can attach pictures, videos, and sound clips that you want to share.

Select Menu > Messaging.

- 1 Select **New message**.
- 2 To select recipients from the contacts list, select the **To** title. To enter the recipient's phone number manually, enter the number in the **To** field.
- 3 To add an attachment, select .
- 4 Select .

Sending a message with an attachment may be more expensive than sending a normal text message. For more information, contact your service provider.

You can send text messages that are longer than the character limit for a single message. Longer messages are sent as two or more messages. Your service provider may charge accordingly.

Characters with accents, other marks, or some language options, take more space, limiting the number of characters that can be sent in a single message.



If the item you insert in a multimedia message is too large for the network, the device may automatically reduce the size.

Only compatible devices can receive and display multimedia messages. Messages may look different in different devices.

Send an audio message

You can record a sound clip, such as a birthday song, and send it to your friend as an audio message.


Select **Menu** > **Messaging**.

- 1 Select **Options** > **Create message** > **Audio message**.
- 2 To record the message, select .
- 3 To select the recipient from the contacts list, select the **To** title. To enter the recipient's phone number manually, enter the number in the **To** field.
- 4 Select .


Receive messages

When you receive a message, you can open it directly from the home screen. Later, you can find the message in the **Conversations** folder or in the **Inbox** folder in **Messaging**.

Select **Menu** > **Messaging**.

When you receive a message,  and **1 new message** are displayed on the home screen. To open the message, select **Show**. If you have added a notification widget to the home screen, open the message from the widget. By default, the message is opened in the **Conversations** view.


Reply to a received message in the Conversations view

Select the text input field at the bottom of the display, write a message, and select .


Open a message in the Inbox folder

Select **Menu** > **Messaging** and **Inbox** and a message.

Reply to a received message in the Inbox view

Open a message, and select .

Forward a message in the Inbox view

Open a message, and select .

Save a received multimedia item

Select and hold the item, and from the pop-up menu, select **Save**. The item can be viewed in the corresponding application. For example, to view saved pictures, open **Photos**.


View a conversation

You can see the messages you have sent to and received from a particular contact from a single view, and continue the conversation from that view.

Select **Menu** > **Messaging**.

Select **Conversations** and a contact. All messages sent to and received from that contact are displayed.

Reply to a message in a conversation

- 1 Open the conversation.
- 2 Select the text input field at the bottom of the display, and write a message.
- 3 To add attachments or more recipients, select **Options** > **Add**.
- 4 To send the message, select .

When you send a new message, it is added to the current conversation. If no conversation exists, a new conversation is started.

When you open a received message from the home screen, by default, the message opens in the Conversations view. If you want messages to open in the Inbox view, select **Options** > **Message view** > **Inbox**.

Listen to a text message

You can set your device to read your text messages aloud.

- 1 Select **Menu** > **Messaging**.
- 2 Select **Inbox**.
- 3 Select and hold a message, and from the pop-up menu, select **Listen**.

Select **Menu** > **Settings** > **Phone** > **Speech**.


Change the language

Select **Language** and a language.

Download an additional language

Select **Options** > **Download languages**.

Change the voice

Select . To preview a voice, select and hold the voice, and select **Play voice**.

Change language

You can change the device language and the language in which you write your messages and mails. You can also activate predictive text input.

Select **Menu** > **Settings and Phone** > **Language**.

Change the device language

Select **Phone language**.

Change the writing language

Select **Writing language**.

Activate predictive text input

Select **Predictive text**.

Mail

About Mail

 Select **Menu** > **Applications** > **Mail**.

You can add several mailboxes and access them directly from your home screen. In the main mail view, you can switch from one mailbox to another.



- 1 Write a mail.
- 2 Switch between your mailboxes.
- 3 Sort your mail by, for example, date.
- 4 Mail in current mailbox.

Mail contains interactive elements. Select and hold, for example, a mail to view a pop-up menu.

Using services or downloading content may cause transfer of large amounts of data, which may result in data traffic costs.

Get a free mail account from Ovi by Nokia

ovi With Nokia's Ovi Mail, you can use your device or PC to access your mail. The anti-spam protection helps keep your mailbox in order, and the virus protection increases security.

- 1 Select **Menu** > **Applications** > **Mail**.
- 2 Select **New mailbox** > **Start** > **Ovi Mail** and **Sign up now**.

Use your PC to access your mail account

Go to www.ovi.com, and sign in.

Add a mailbox

You can add several mailboxes to your device.


Select **Menu** > **Applications** > **Mail**.

Add a mailbox

Select **New mailbox**, and follow the instructions.

To get a free Ovi Mail account from Nokia, select **Ovi Mail** and **Sign up now**.

Add a mail widget to the home screen

- 1 In the home screen, tap and hold an empty area.
- 2 Select  and the desired widget from the list.

Delete a mailbox

- 1 Select **Menu** > **Applications** > **Mail**.
- 2 Select **Options** > **Delete mailbox** and the mailbox.

Read mail

You can use your device to read and reply to mail.

Select **Menu** > **Applications** > **Mail**.

Read a mail

Select the mail.

Tip: To zoom in or out, place two fingers on the screen, and slide them together or apart.



Open or save an attachment

Select the attachment and the appropriate option. If there is more than one attachment, you can save them all at once.

Reply to a mail

Select **Options** > **Reply**.

Forward a mail

Select **Options** > **Forward**.




Tip: If there is a web address in a mail and you would like to open the address in the device browser, select the address.

Tip: To open the next or previous mail, use the arrow icons.

Send a mail

You can use your device to write and send mail, and attach files to your mail.

Select **Menu** > **Applications** > **Mail**.

- 1 Select .
- 2 To add a recipient from your contacts list, select the To, Cc, or Bcc icon. To enter a mail address manually, select the To, Cc, or Bcc field.
- 3 To add an attachment to the mail, select .
- 4 To send the mail, select .

Respond to a meeting request

You can open and accept meeting requests using Mail for Exchange. When you accept a meeting request, it appears in your calendar.

Select **Menu** > **Applications** > **Mail**, and open the meeting request.

Select  (Accept),  (Decline), or  (Tentative).

Check your availability

Select **Options** > **View calendar**.

To edit, send, or forward an accepted meeting request, open the request in your calendar.

The available options may vary.

Open mail from the home screen

You can have several mail widgets on the home screen, depending on your device. Each mail widget contains one mailbox. In the widget, you can see if you have received new mail and the number of unread mails.

Add a mail widget to the home screen

On the home screen, select **New mailbox**, and follow the instructions.

Add another mail widget to the home screen

Tap and hold the home screen, and select  and the desired widget from the list.

Open a mail

Select the mail widget.

Internet

About the web browser



Select **Menu** > **Web**.

Catch up on the news and visit your favourite websites. You can use your device web browser to view web pages on the internet.

To browse the web, you must have an internet access point configured in your device and be connected to a network.

Browse the web

Select **Menu** > **Web**.

Tip: If you do not have a flat-rate data plan from your service provider, to save data costs in your phone bill, you can use a WLAN to connect to the internet.

Go to a website

Select the web address bar, enter a web address, and select .



Tip: To search the internet, select the web address bar, enter the search word, and select the link below the web address bar.

Zoom in or out

Place two fingers on the screen, and slide your fingers together or apart.

A cache is a memory location that is used to store data temporarily. If you have, or have tried to, access confidential information or a secure service, requiring passwords, clear the cache after each use.



Empty the cache

Select  >  > **Privacy** > **Clear privacy data** > **Cache**.

Add a bookmark

If you visit the same websites all the time, add them to your Bookmarks view, so you can easily access them.

Select **Menu** > **Web**.

While browsing, select  > .


Go to a bookmarked website while browsing



Select  >  and a bookmark.

Subscribe to a web feed

You don't have to visit your favourite websites regularly to keep up with what's new on them. You can subscribe to web feeds and get links to latest content automatically.

Select **Menu** > **Web**.

Web feeds on web pages are usually indicated with . They are used to share, for example, the latest news headlines or blog entries.

Go to a blog or web page that contains a web feed, and select  >  and the desired feed.

Update a feed

In the Web feeds view, select and hold the feed, and from the pop-up menu, select **Refresh**.



Set a feed to automatically update

In the Web feeds view, select and hold the feed, and from the pop-up menu, select **Edit > Automatic updates**.

Discover nearby events

Are you looking for interesting things to do near your current location? With Here and now, you can get information about, for example, the weather, events, cinema times, or restaurants nearby.

Select **Menu > Web**.



- 1 Select  >  > **Here and now**.
- 2 Browse the available services, and for more information, select the service.

Some content is generated by third parties and not Nokia. The content may be inaccurate and is subject to availability.

Some services may not be available in all countries, and may be provided only in selected languages. The services may be network dependent. For more information, contact your network service provider.


Using services or downloading content may cause transfer of large amounts of data, which may result in data traffic costs.

Unreadable characters while browsing the web

If unreadable characters are displayed, select **Menu > Web** and  >  > **Page > Default encoding** and the correct encoding for the character set of the language.

Social networks

About Social

 Select **Menu > Social**, and sign in to the social networking services that you use.

To enhance your social networking experience, get Social on Ovi. When signed in to social networking services through Social, you can do the following:

- See your friends' status updates from multiple services in one view
- Post your own status update to multiple services at the same time
- Instantly share pictures you take with the camera
- Share videos you record with your device
- Link your online friends' profiles to their contact information in your device
- Add your location information to your status update

- Add events from the service calendar to your device calendar

Only those features that are supported by the social networking service are available.

Using social networking services requires network support. This may involve the transmission of large amounts of data and related data traffic costs. For information about data transmission charges, contact your service provider.

The social networking services are third party services and not provided by Nokia. Check the privacy settings of the social networking service you are using as you may share information with a large group of people. The terms of use of the social networking service apply to sharing information on that service. Familiarise yourself with the terms of use and the privacy practices of that service.

See your friends' status updates in one view

When you are signed in to social networking services through the Social application, you can see your friends' status updates from all those services in a single view. You do not have to switch between different applications to see what everyone is up to.

Select **Menu** > **Social**.

- 1 Select a service, and sign in.
- 2 Select **Add social network**.
- 3 Select another service, and sign in.
- 4 Select **All Activity**.

All the feeds from the services you have added are automatically included in the view.

Post your status to social networking services

With the Social application, you can post your status update to social networking services.

Select **Menu** > **Social**.

Write your status update in the text field.

Link your online friends to their contact information

You can link your online friends' profiles from social networking services to their contact information in your device. After linking, you can view their contact information directly from the Social application, and see their latest status updates in your contacts list.

Select **Menu** > **Social**.

- 1 Select an online friend's profile picture.

- 2 From the pop-up menu, select **Link Profile to Contact**.
- 3 From your contacts list, select the contact to which to link the profile.

See your friends' status updates on the home screen

When you sign in to social networking services through Ovi by Nokia, you can see your online friends' status updates directly on the home screen.

Browse updates on the home screen

When you are signed into a service, you can see updates in the Social widget.


Open the Social application from the home screen

Select the Social widget. If you are signed in, the status updates view opens. If you are not signed in, the sign-in view opens.


Upload a picture or video to a service

Use the Social application to upload your pictures or videos to social networking services.

Select **Menu > Social**.

- 1 Select .
- 2 Select whether to upload a picture or video.
- 3 To mark the items to upload, select the items.
The maximum file size is 4 MB for pictures and 10 MB for videos.
- 4 If uploading a single picture, you can add a caption and a tag with a comment to a particular section of the picture.
To upload a video, the feature needs to be supported by the social networking service, and you need to use a WLAN connection.

Take a picture and upload it

- 1 Select .
- 2 Select the option for uploading a picture from the camera.
- 3 Take a picture.
- 4 Add a caption and a tag with a comment to a particular section of the picture.

Share your location in your status update

With the Social application, you can let your friends know where you are, so they can find you.

Select **Menu > Social**.

- 1 Select the text input field at the top of the display.
- 2 Add your location. The device uses GPS to determine your current location, and searches for landmarks near you.
- 3 If several landmarks are found, select one from the list.

Location sharing is available only if it is supported by the service.



Important: Before sharing your location, always consider carefully with whom you are sharing. Check the privacy settings of the social networking service you are using, as you might share your location with a large group of people.

The applicable terms of use of the social networking service may apply to sharing your location to the service. Familiarise yourself with the terms of use and the privacy practices of the service, and use appropriate consideration before disclosing your location data to others or viewing the location of others.

Contact a friend from a social networking service

When commenting your friend's status is not enough, you can call or send a message to the friend.

Select **Menu** > **Social**.

- 1 Select a friend's profile picture.
- 2 From the pop-up menu, select **View contact info**.
- 3 Select a communication method.

This feature is available if you have linked your online friends to their contact information in your device.

The available communication methods vary. To call or send a text message to a friend, the feature needs to be supported by the service.

Add an event to your device calendar

When responding to invitations to events in a social networking service, you can add the events to your device calendar, so you can view upcoming events even if you are not online.


Select **Menu** > **Social** and a service, and sign in.

- 1 Select an invitation to an event.
- 2 Add the event to your device calendar.

This feature is available only if supported by the service.

Camera

About the camera

 Press and hold the camera key.

Why carry a separate camera if your device has all you need for capturing memories? With your device camera, you can easily take pictures or record videos.

You can later use your device to view or edit the pictures and videos, share them on the internet, or send them to compatible devices.

Take a picture

Press and hold the camera key.



Zoom in or out

Use the volume keys.

The face tracker detects faces, draws rectangles around them, and optimises the focus — even when the faces are moving. Face tracking is activated by default.

Deactivate face tracking

Select  > Face detect..

Pictures and videos are saved to the mass memory by default.

Save location information to your pictures and videos

If you sometimes struggle to remember exactly where you were when you took a particular picture or video, you can set your device to automatically record the location.

Location information can be attached to an image or a video clip if location coordinates can be determined via network and GPS. If you share an image or a video clip which has location information attached, the location information may be visible to others that view the image or the video clip. You can deactivate geotagging in the camera settings.


Press and hold the camera key.


Activate the location recording feature

Select **Options** > **Settings** > **Save location info** > **Yes**.

It may take several minutes to obtain the coordinates of your location. The availability and quality of GPS signals may be affected by your location, buildings, natural obstacles, and weather conditions. If you share a file that includes location information, also the location information is shared, and your location may be visible to third parties viewing the file. This feature requires network service.

Location information indicators:

 — Location information is unavailable. Location information may not be saved to pictures or videos.

 — Location information is available. Location information is saved to pictures or videos.

Take a picture in the dark

To take pictures even when light levels are low, activate night mode.

Press and hold the camera key.


Activate night mode

- 1 Select  > **Scene mode**.
- 2 To use the flash, select **Night portrait**. If you do not want to use the flash, select **Night**.

Picture and video tips

Press and hold the camera key.

When taking a picture:

- Use both hands to keep the camera steady.
- When you zoom in, the image quality may decrease.
- The camera activates battery saving mode after about a minute of inactivity. To activate the camera again, press the camera key briefly.
- You can set the user defined scene to be used as the default scene every time you open the camera. Select  > **Scene mode** > **User defined** > **Edit**. Modify the settings, and select **Set as default scene mode** > **Yes**.

Keep a safe distance when using the flash. Do not use the flash on people or animals at close range. Do not cover the flash while taking a picture.


When recording a video:

- For best results, close any open applications before recording.

Record a video

Besides taking pictures with your device, you can also capture your special moments as videos.

Press and hold the camera key.




- 1 To switch from image mode to video mode, if necessary, select .
- 2 To start recording, press the camera key. A red record icon is displayed.
- 3 To pause recording, select **Pause**. If you pause recording and do not press any key within five minutes, the recording stops.
To zoom in or out, use the volume keys.
- 4 To stop recording, press the camera key. The video is automatically saved in Photos.

Tip: You can send your video in a multimedia message. To limit the video size for sending, before recording, select **Options** > **Settings** > **Video quality**, and drag the slider to **Basic**.



Send a picture or video

You can send pictures and videos in a multimedia or mail message, or using Bluetooth.


Send in a multimedia message

- 1 Take a picture or record a video.
- 2 Select  > **Via message**.
- 3 To select a recipient from your contacts list, select . To enter the recipient's name or phone number manually, select the **To** field, and enter the name or phone number.
- 4 Select .

Send in a mail message

- 1 Take a picture or record a video.
- 2 Select  > **Via mail**.
- 3 To select a recipient from your contacts list, select the **To** title. To enter the recipient's address manually, select the **To** field, and enter the address.
- 4 Select .

Send using Bluetooth


- 1 Take a picture or record a video.
- 2 Select  > **Via Bluetooth**.
- 3 Select the device to connect to, or search for more devices.

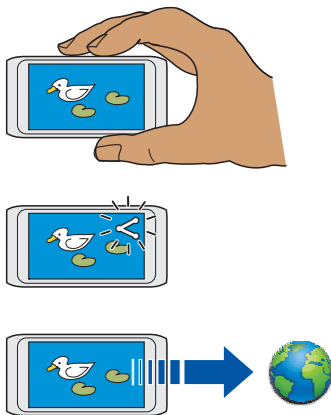
If the other device requires a passcode, enter the passcode.

Share a picture or video directly from the camera

After taking a picture or recording a video, you can upload your picture or video to a social networking service.

Press and hold the camera key.

After taking a picture or recording a video, select  and follow the displayed instructions.



The first time you try to upload a picture or video to a social networking service, you are guided through the service activation procedure. The service you add is set as the default sharing service.

Not all social networking services support all file formats or videos recorded in high quality.

Your pictures and videos

Photos

About Photos



Select Menu > Photos.

You can watch the videos you have recorded, or browse through the pictures you have taken.

You can also view the pictures and videos on a compatible TV. For a hard copy, print out the best shots.

To manage your media files more effectively, add tags to the files, or organise them into albums.

View pictures and videos

Select **Menu** > **Photos**.

Browse pictures

Swipe up or down.

View a picture

Select the picture.

View a picture in full screen mode

Select the picture, and turn your device to landscape mode.

Zoom a picture

Place two fingers on the screen, and to zoom in, slide your fingers apart. To zoom out, slide your fingers together.



Tip: To quickly zoom in or zoom back out, tap the screen twice.

View pictures as a slide show


Select a picture and **Options** > **Slide show** > **Play**. The slide show starts from the selected picture.

You can view all your pictures and videos, or your pictures and videos grouped by album or tag.


Switch the view

Select  and a view.

Play a video

Select a video. Videos are marked with .

Pictures and videos can also be sent to you from a compatible device. You can view a received picture or video directly in **Photos**.




Tip: To upload your pictures and videos to the internet, select a file and  or the icon of the sharing service.

Organise your pictures

You can organise your pictures into albums, and tag them to make it easier to find a particular picture.

Select **Menu** > **Photos**.

Create a new album

- 1 In the main view, select  >  > .
- 2 To rename the album, select the album name.

Rename an album

Select and hold the album, and from the pop-up menu, select **Rename** and the album name.

Move a picture to an album

- 1 Select and hold a picture, and from the pop-up menu, select **Add to album**.
- 2 Select the album to move the picture to. To create a new album to move the picture to, select **New album**.

Tip: To move several pictures to an album, mark the pictures, and select **Options** > **Add to album**.

Remove an album

Select and hold the album, and from the pop-up menu, select **Delete**.
The pictures and videos in the album are not deleted from your device.



Tag a picture

- 1 Select and hold a picture, and from the pop-up menu, select **Add tag**.
- 2 Select a tag from the list, or enter a new tag.

Share a picture or video from Photos

Want to upload your pictures or videos to a social networking service for your friends and family to see? You can upload pictures and videos directly from Photos.

Select **Menu** > **Photos**.

- 1 Select a picture or video to upload.
To select several items, select , and mark the items.
- 2 Select  and follow the displayed instructions.

Copy your pictures or videos between your device and computer

Have you taken pictures or recorded videos with your device that you want to watch on your computer? Or do you want to copy your pictures or videos from your device to your computer? Use a compatible USB data cable to copy your pictures and videos between your device and a computer.

- 1 Use a compatible USB data cable to connect your device to a computer.
- 2 Open Nokia Ovi Suite on your computer, and follow the displayed instructions.


If you use a file manager to manually copy pictures or videos to your device memory, to view them in the Photos application, copy pictures to the Images folder and videos to the Videos folder.

Back up your pictures

Want to make sure that you will not lose any important pictures? Back up your pictures with Nokia Ovi Suite.

- 1 Use a compatible USB data cable to connect your device to a computer.
- 2 Open Nokia Ovi Suite on your computer, and follow the displayed instructions on synchronising Photos.

Edit the pictures you have taken

 With Photo editor, you can add effects, text, clip art, or frames to your pictures.

Select **Menu** > **Applications** > **Photo editor** and a picture.

- 1 To insert effects, select the desired option from the extended toolbar.
- 2 To save the edited picture, select **Options** > **Save**. The edited picture does not replace the original picture.

To later view your edited pictures, select **Menu** > **Photos**.

Video editor

About Video Editor

With Video editor, you can combine pictures and videos with sounds, effects, and text, and easily turn them into short movies or slideshows.



Select **Menu** > **Applications** > **Video editor**.

The following codecs and file formats are supported: MPEG-4, H.263, H.263 BL, WMV, JPEG, PNG, BMP, GIF, MP3, AAC/AAC+/eAAC+, WAV, and AMR-NB/AMR-WB.





Save the sound files that you want to use in a movie to the **Sound files** folder on your device.

You cannot add a DRM protected sound file to a movie.

Create a movie

You can create short movies from your pictures and videos to share with your friends and family.

Select **Menu** > **Applications** > **Video editor** and .



- 1 To add videos and pictures to your movie, select . To view the files you have selected, swipe left or right.
- 2 To add transitions between videos and pictures, select **+**.
- 3 To add sounds to play in the background, select .
- 4 To add text or subtitles to your movie, select .
- 5 To edit your movie, select . In editing mode, you can cut the length of the video or define how long a picture is displayed.
- 6 Save your movie.



To later view your movie, select **Menu** > **Applications** > **Videos & TV** > **Videos**.

Create a slide show

Want to turn your holiday pictures into a stylish slide show? With templates for different moods and events, you can create slide shows for anniversaries, parties, or holidays.

Select **Menu** > **Applications** > **Video editor**.

- 1 Select .
- 2 Select a template to use for the slide show. When you select a template, a preview is displayed.
- 3 To add pictures to your slide show, select .

- 4 To add sounds to play in the background, select .
- 5 To add a title, select .
- 6 Preview and save your slide show.

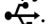
To later view your slide show, select **Menu > Applications > Videos & TV > Videos**.

Print a picture you have taken

You can print your pictures directly using a compatible printer.

- 1 Use a compatible USB data cable to connect your device to a printer in Media transfer mode.
- 2 Select the picture to print.
- 3 Select **Options > Print**.
- 4 To use the USB connection to print, select **Print > Via USB**.
- 5 To print the picture, select **Options > Print**.

Tip: You can also use a Bluetooth printer. Select **Print > Via Bluetooth**. Change the selected printer to Bluetooth, and follow the displayed instructions.

Tip: When the USB cable is connected, you can change the USB mode. In the top right corner of the browsing view, select .

View pictures and videos on a TV

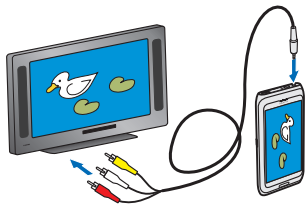
You can view pictures and videos on a compatible TV, making it easier for you to show them to your family and friends.

You need to use a Nokia Video Connectivity Cable (available separately), and may need to modify the TV-out settings and aspect ratio. To modify the TV-out settings, select **Menu > Settings and Phone > Accessories > TV-Out**.

If your device supports HDMI, you can use a compatible HDMI adapter and a standard HDMI cable (cable available separately) to connect your device to a compatible HD TV. Pictures and videos retain the original video and audio quality.

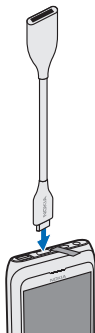
View pictures and videos on a standard definition TV

- 1 Connect a Nokia Video Connectivity Cable to the video input of a compatible TV. The colour of the plugs must match the colour of the sockets.
- 2 Connect the other end of the Nokia Video Connectivity Cable to the Nokia AV connector of your device. You may need to select **TV-Out cable** as the connection mode.
- 3 Select a picture or video.

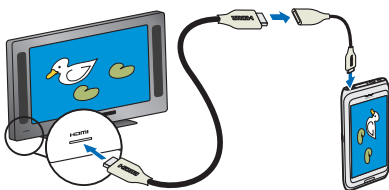


View pictures and videos on an HD TV

- 1 Connect the HDMI adapter to the HDMI connector of your device.



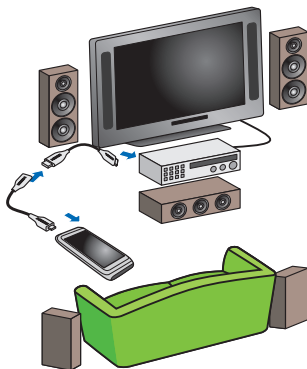
- 2 Connect an HDMI cable to the adapter, and then to the HDMI connector of a TV. You may need to manually select the HDMI input on the TV.



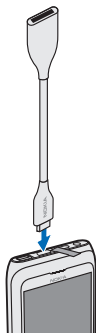
- 3 Select a picture or video.

Connect your device to your home theatre

You can use your device with home theatre systems. With compatible home theatres, you can enjoy HD videos with Dolby™ Digital Plus 5.1 multichannel audio for an immersive surround sound experience.



- 1 Connect the HDMI adapter to the HDMI connector of your device.



- 2 Connect an HDMI cable (available separately) to the adapter, and then to the HDMI connector of your home theatre.

The home theatre needs to support the HDMI 1.3 standard and be able to pass through video to your TV over HDMI. Your device decodes Dolby Digital Plus, and outputs PCM audio to your home theatre.

- 3 To set the home theatre to use the respective HDMI input, see the user instructions of your home theatre.
- 4 Play a video on your device.

The maximum supported video resolution is 1280x720 (720p), and your device does not support files that are larger than 4 GB.

Example: An MP4 or MKV video that has the following properties:

- Video: AVC 1916kbps, 24fps, High Profile Level 3.1, 3 ref. frames
- Audio: Dolby Digital Plus E-AC-3, 384kbps, 6 channels

Videos and TV

Videos

About the video player



Select **Menu** > **Applications** > **Videos & TV** > **Videos**.

You can watch videos on your device when out and about.

Tip: Get new videos from Ovi Store. To learn more about Ovi Store, go to www.ovi.com.

Using a packet data access point to download a video may involve the transmission of large amounts of data through your service provider's network. For information about data transmission charges, contact your service provider.

Play a video

Select **Menu** > **Applications** > **Videos & TV** > **Videos**.

Select the video.

Use the video player controls

Tap the screen.

Copy your videos between your device and computer

Have you recorded videos with your device that you want to watch on your computer? Or do you want to copy your videos from your device to your computer? Use a compatible USB data cable to copy your videos between your device and a computer.

- 1 Use a compatible USB data cable to connect your device to a computer.
- 2 Open Nokia Ovi Suite on your computer, and follow the displayed instructions.

Watch Web TV

With on-demand Web TV, you can keep up with the news and catch up on the latest episodes of your favourite TV series.

Select **Menu > Applications > Videos & TV** and a service.

To stream content over the air, you need to use a 3G, 3.5G, or WLAN connection. Using Web TV services may involve the transmission of large amounts of data. For information about data transmission charges, contact your network service provider.

The selection of pre-installed Web TV services depends on the country and network service provider. The content of the Web TV services varies by service.

- 1 To browse Web TV content, swipe the screen.
- 2 To start playback, select the thumbnail image.
- 3 To show or hide the controls during playback, tap the screen.
- 4 To change the volume, use the volume keys.

Add a Web TV widget to your home screen

Tap and hold the home screen, and select  and the desired Web TV service.

Find more Web TV services

To download Web TV services from Nokia's Ovi Store, select **Get more**. Downloaded services are saved in the Applications folder, but you can move them to another folder, such as a dedicated Web TV folder.

To learn more about Ovi Store, go to www.ovi.com.

Music and audio

Music player

About Music player

 Select **Menu > Music > Music player**.

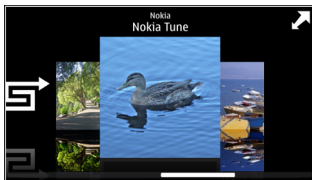
With the Music player application, you can listen to music and podcasts while on the move.

Tip: Get more music from Ovi Music. Select **Menu > Music > Ovi Music**. To learn more about Ovi, go to www.ovi.com.


Play music

Select **Menu > Music > Music player**.

- 1 Select **Options** and the desired view. You can browse by song, album, or genre. To browse the album covers in the album view, swipe left or right.





- 2 Select a song or album.

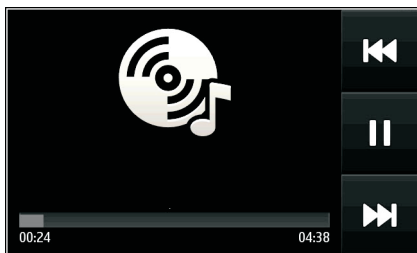
Tip: To listen to the songs in a random order, select .

Pause and resume playback

To pause playback, select ; to resume, select .

Rewind or fast-forward a song

Select and hold  or .



Tip: When listening to music, you can return to the home screen, leaving the music playing in the background.

Create a playlist

Want to listen to different music for different moods? With playlists, you can create selections of songs to play in a specific order.

Select **Menu** > **Music** > **Music player**.

- 1 Select **Options** > **Playlists**.

- 2 Select **Options** > **New playlist**.
- 3 Enter a name for the playlist, and select **OK**.
- 4 Select the songs to add to the playlist, in the order you want them to play.

Add a song to a playlist

Select and hold the song, and from the pop-up menu, select **Add to playlist**.

Remove a song from playlist

In the playlist view, select and hold the song, and from the pop-up menu, select **Remove**.

This does not delete the song from the device; it only removes it from the playlist.

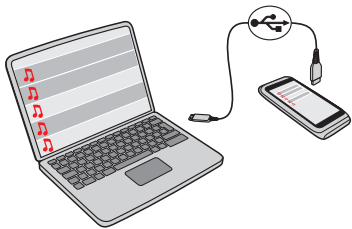
Play a playlist


Select **Options** > **Playlists** and the playlist.

Tip: Music player automatically creates a playlist for the most played songs, recently played songs, and recently added songs.

Copy music from your PC

Do you have music on your PC that you want to listen on your device? Nokia Ovi Suite is the fastest way to transfer music on your device, and you can use it to manage and synchronise your music collection.




- 1 Use a compatible USB data cable to connect your device to a compatible computer.
- 2 On your device, select the notification area in the top right corner, and select  > **Media transfer**.
- 3 Open Nokia Ovi Suite on your computer, and follow the displayed instructions. For more information, see the Nokia Ovi Suite user guide.

Download the latest version of Nokia Ovi Suite from www.ovi.com.

Some music files can be protected by digital rights management (DRM) and cannot be played on more than one device.

Buy music from Nokia's Ovi Music

 With Nokia's Ovi Music, you can purchase and download songs to your device and your computer. To manage your music collection and downloads, you can install Nokia Ovi Player on your compatible PC, or use your internet browser to download music.

To start discovering music, select **Menu > Music > Ovi Music** or go to www.ovi.com.

Protected content

Digital rights management (DRM) protected content, such as pictures, videos, or music, comes with an associated licence that defines your rights to use the content.

You can view the details and status of the licences, and reactivate and remove licences.

Manage digital rights licences

Select **Menu > Settings > Phone > Phone management > Security settings > Protected content**.

Record sounds


You can use your device recorder to record sounds from nature, such as birds singing, as well as voice memos. You can send the recorded sound clips to your friends.

Select **Menu > Office > Recorder**.

Record a sound clip

Select .

Stop recording

Select . The sound clip is automatically saved to the Sound files folder in the File manager application.

Send a recorded sound clip as an audio message

Select **Options > Send**.

FM radio

About the FM radio



Select **Menu > Music > Radio**.

You can listen to FM radio stations using your device - just plug in a headset, and select a station!

To listen to the radio, you need to connect a compatible headset to the device. The headset acts as an antenna.


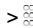
A Bluetooth headset cannot be used as an antenna.



Find and save radio stations



Search for your favourite radio stations, and save them, so you can easily listen to them later.

Select **Menu > Music > Radio**.

From the toolbar, select  > .

To find radio stations, you can use the automatic scanning, or you can set a frequency manually. The first time you open the FM radio, the application automatically searches for radio stations audible at your location.

Scan for all available stations

- 1 From the toolbar, select .
- 2 To save all found stations, from the toolbar, select . To save a single station, select and hold the station title, and from the pop-up menu, select **Save**.

Set a frequency manually

- 1 From the toolbar, select  **Tune manually**.
- 2 Use the up and down arrow icons to enter a frequency.

Listen to the radio

You can enjoy your favourite FM radio stations on the go.

Select **Menu** > **Music** > **Radio**.

Listen to a saved station

From the toolbar, select  > , and select a station from the list.

Go to the next or previous saved station

Swipe right or left. Alternatively, select  or .

Scan for another available station

Swipe up or down. Alternatively, select and hold  or .

Listen to the radio using the loudspeaker

Select **Options** > **Activate loudspeaker**. You still need to have a headset attached.

You can make or answer a call while listening to the radio. The radio is automatically muted during an active call.

Tip: To search and buy music from Ovi Music, from the toolbar, select  > .

The quality of the radio broadcast depends on the coverage of the radio station in the area.



Reorder the list of saved stations

You can reorder the list of saved stations, so that your favourites are at the top.

Select **Menu** > **Music** > **Radio**.

The stations you have saved are listed in the Station list view.

Move a station on the list

- 1 From the toolbar, select  > .
- 2 Select and hold the station title, and from the pop-up menu, select **Move**.
- 3 Select the new place on the list.

Maps

Maps overview



Select **Menu** > **Maps**.

Welcome to Maps.

Maps shows you what is nearby, helps you plan your route, and guides you where you want to go.

- Find cities, streets, and services.
- Find your way with turn-by-turn directions.
- Synchronise your favourite locations and routes between your mobile device and the Ovi Maps web service.
- Check weather forecasts and other local information, if available.

Some services may not be available in all countries, and may be provided only in selected languages. The services may be network dependent. For more information, contact your network service provider.

Using services or downloading content may cause transfer of large amounts of data, which may result in data traffic costs.

Contents of digital maps may sometimes be inaccurate and incomplete. Never rely solely on the content or the service for essential communications, such as in emergencies.

Some content is generated by third parties and not Nokia. The content may be inaccurate and is subject to availability.

My position

View your location and the map

See your current location on the map, and browse maps of different cities and countries.

Select **Menu > Maps and Map**.

 indicates your current position, if available. When searching for your position,  blinks. If your position is not available,  indicates your last known position.


If accurate positioning is not available, a red halo around the positioning icon indicates the general area you might be in. In densely populated areas, the accuracy of the estimate increases, and the red halo is smaller than in lightly populated areas.

Browse the map

Drag the map with your finger. By default, the map is oriented north.

View your current or last known location

Select .

If you search for or browse to a location, and view details about the location using a service, such as Weather, the information for the location you are currently viewing is displayed. To return to viewing your current location, or to view information for your current location, select .

Zoom in or out

Select + or -.

Tip: To zoom, you can also place two fingers on the map, and slide your fingers apart to zoom in or together to zoom out. Not all devices support this feature.

If you browse to an area not covered by the street maps that are stored on your device, and you have an active data connection, new street maps are automatically downloaded.

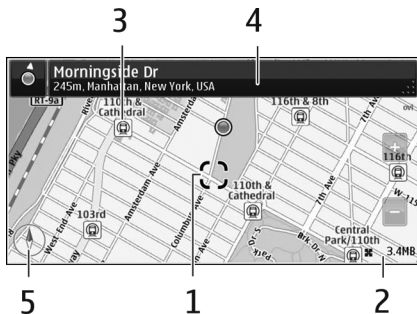
Prevent downloading new street maps automatically

In the main menu, select  > Internet > Connection > Offline.

New street maps are also downloaded if you upgrade to the latest Maps application version. When you use Maps the first time after an upgrade, select **Use Ovi Maps online**. You need an active data connection.

Map coverage varies by country and region.

Map view




- 1 Selected location
- 2 Indicator area
- 3 Point of interest (for example, a railway station or a museum)
- 4 Information area

5 Compass

Change the look of the map

View the map in different modes, to easily identify where you are.

Select **Menu > Maps and Map**.

Select  and from the following:

Map view — In the standard map view, details such as location names or motorway numbers are easy to read.

Satellite view — For a detailed view, use satellite images.

Terrain view — View at a glance the ground type, for example, when you are travelling off-road.

3D view — For a more realistic view, change the perspective of the map.

Landmarks — Display prominent buildings and attractions on the map.

Night mode — Dim the colours of the map. When travelling at night, the map is easier to read in this mode.

Transit lines — View selected public transport services, such as metro and tram routes.

The available options and features may vary by region. The unavailable options are dimmed.

Download and update maps

Save new street maps to your device before a journey, so you can browse the maps without an internet connection when travelling.

To download and update maps on your device, you need an active WLAN connection.

Download maps

- 1 Select **Update > Add new maps**.
- 2 Select a continent and a country, and select **Download**.
To complete the download later, select **Pause** or **Exit download**.

Tip: You can also use the Nokia Ovi Suite PC application to download the latest street maps and voice guidance files, and copy them to your device. To download and install Nokia Ovi Suite, go to www.ovi.com.

When you install a newer version of the Maps application on your device, the country or region maps are deleted. Before using Nokia Ovi Suite to download new country or region maps, open and close the Maps application, and make sure you have the latest version of Nokia Ovi Suite installed on your computer.

Update maps

Select **Update** > **Check for updates**.

Use the compass


When the compass is activated, both the arrow of the compass and the map rotate automatically in the direction to which the top of your device is pointing.

Select **Menu** > **Maps and Map**.

Activate the compass

Select .

Deactivate the compass

Select  again. The map is oriented north.

The compass is active when it is green. If the compass needs calibration, the compass is red.

Calibrate the compass

Turn the device around until it beeps or vibrates.



The compass has limited accuracy. Electromagnetic fields, metal objects, or other external circumstances may also affect the accuracy of the compass. The compass should always be properly calibrated.

About positioning methods

Maps displays your location on the map using GPS, A-GPS, SA-GPS, WLAN, or network (cell ID) based positioning.

The global positioning system (GPS) is a satellite-based navigation system used for calculating your location. Assisted GPS (A-GPS) is a network service that sends you GPS data, improving the speed and accuracy of the positioning. Self-assisted GPS (SA-GPS) provides the fastest positioning without using a network connection.

WLAN positioning improves position accuracy when GPS signals are not available, especially when you are indoors or between tall buildings.

With network (cell ID) based positioning, the position is determined through the antenna system your mobile device is currently connected to.

To save on data costs, you can deactivate A-GPS, WLAN, and network (cell ID) based positioning in your device positioning settings, but calculating your location may take much longer.

The availability and quality of GPS signals may be affected by your location, satellite positions, buildings, natural obstacles, weather conditions, and adjustments to GPS satellites made by the United States government. GPS signals may not be available inside buildings or underground.

Do not use GPS for precise location measurement, and never rely solely on the location information provided by GPS and cellular networks.

The trip meter may not be accurate, depending on the availability and quality of your GPS connection.



Note: Using WLAN may be restricted in some countries. For example, in France, you are only allowed to use WLAN indoors. For more information, contact your local authorities.

Depending on the available positioning methods, the accuracy of positioning may vary from a few metres to several kilometres.

Search

Find a location

Maps helps you find specific locations and businesses.

Select **Menu > Maps and Map > Search**.

- 1 Enter search words, such as a street address or place name.
- 2 Select an item from the list of proposed matches.
The location is displayed on the map.

Return to the list of proposed matches

Select **Search**.

Tip: In the search view, you can also select from the list of your previous search words.

Search for different types of nearby places

Select **Categories** and a category, such as shopping, accommodation, or transport.

If no search results are found, make sure the spelling of your search words is correct. Problems with your internet connection may also affect results when searching online.

If you have maps of the searched area stored on your device, to avoid data transfer costs, you can also get search results without an active internet connection, but the search results may be limited.

View location details

Find more information about a specific location or place, such as a hotel or restaurant, if available.

Select **Menu** > **Maps and Map** > **Search**.

The available options may vary by region. To view all the available place details, you need an active internet connection.

View the details of a place

Search for a place. Select the place and its information area.

Rate a place

Search for a place. Select the place, its information area, **Rate**, and the star rating. For example, to rate a place as being 3 out of 5 stars, select the third star.

When you find a place that does not exist or contains inappropriate information or incorrect details, such as the wrong contact information or location, it is recommended that you report it to Nokia.

Report incorrect place information

Select the place, its information area, **Report**, and the appropriate option.

Favourites

Save or view a place or route

Save an address, place of interest, or route, so it can be quickly used later.

Select **Menu** > **Maps**.

Save a place

- 1 Select **Map**.
- 2 Tap the location. To search for an address or place, select **Search**.

- 3 Tap the location's information area.
- 4 Select **Save**.

Save a route

- 1 Select **Map**.
- 2 Tap the location. To search for an address or place, select **Search**.
- 3 Tap the location's information area.
- 4 To add another route point, select **Navigate** > **Add to Route**.
- 5 Select **Add new route point** and the appropriate option.
- 6 Select **Show route** > **Options** > **Save route**.

View a saved place

In the main view, select **Favourites** > **Places**, the place, and **Show on map**.

View a saved route

In the main view, select **Favourites** > **Routes** and the route.

View and organise places or routes

Use your **Favourites** to quickly access the places and routes you have saved.

Group the places and routes into a collection, for example, when planning a trip.

Select **Menu** > **Maps** and **Favourites**.

View a saved place on the map

- 1 Select **Places**.
- 2 Go to the place.
- 3 Select **Show on map**.

To return to the list of saved places, select **List**.

Create a collection

Select **Create new collection**, and enter a collection name.

Add a saved place to a collection

- 1 Select **Places** and the place.
- 2 Select **Organise collections**.
- 3 Select **New collection** or an existing collection.

Rename or delete a saved place in a collection

- 1 Select **Places**.

- 2 Select the place, and from the pop-up menu, select the appropriate option.

Rename or delete a route in a collection

- 1 Select **Routes**.
- 2 Select and hold the route, and from the pop-up menu, select the appropriate option.

Send a place to a friend

When you want to show your friends where a place is on the map, you can send the place to them.

Select **Menu** > **Maps** and **Map**.

To view the place on the map, your friends don't need to have a Nokia mobile device, but an active internet connection is required.

- 1 Select a place and its information area.
- 2 Select **Share** > **Share via SMS** or **Share via Email**.

A mail or text message containing a link to the location on the map is sent to your friend. Opening the link requires a network connection.

Synchronise your Favourites

Plan a trip on your computer at the Ovi Maps website, synchronise the saved places and routes with your mobile device, and access the plan on the go.

To synchronise places or routes between your mobile device and the Ovi Maps internet service, you need to be signed in to your Nokia account.

Synchronise saved places and routes

Select **Favourites** > **Synchronise with Ovi**. If you do not have a Nokia account, you are prompted to create one.

You can set your device to synchronise your Favourites automatically when you open or close the Maps application.

Synchronise Favourites automatically

Select  > **Synchronisation** > **Synchronisation** > **At start-up and shut-d..**

Synchronising requires an active internet connection, and may involve the transmission of large amounts of data through your service provider's network. For information about data transmission charges, contact your service provider.


To use the Ovi Maps internet service, go to www.ovi.com.

Check in

With the Check in feature, you can keep a private record of where you have been. Keep your social networking friends and contacts up to date with what you are doing, and share your location on your favourite social networking services.

Select **Menu > Maps and Check in**.

To check in, you need a Nokia account. To share your location, you also need a social networking service account. The supported social networking services vary by country or region.

- 1 Sign in to your Nokia account, or, if you do not yet have one, create the account.
- 2 It is possible to share your location on the social networking services that you use. When you use Check in for the first time, you can set your account credentials for the services that you use. To later set up accounts, select .
- 3 Select your current location.
- 4 Write your status update.
You can post only to selected services that you have set up. To exclude a service, select the service logo. To exclude all the services, keeping your location and status update private, clear the **and post on** check box.
- 5 Select **Check in**.

You may also be able to attach a picture to your post, depending on the social networking service.

View your Check in history

Select .

Checking in and sharing your location requires an internet connection. This may involve the transmission of large amounts of data and related data traffic costs.

The social networking services are third-party services and not provided by Nokia. Check the privacy settings of the social networking service you are using as you may share information with a large group of people. The terms of use of the social networking service apply to sharing information on that service. Familiarise yourself with the terms of use and the privacy practices of that service.



Important: Before sharing your location, always consider carefully with whom you are sharing. Check the privacy settings of the social networking service you are using, as you might share your location with a large group of people.

Drive and Walk

Get voice guidance


Voice guidance, if available for your language, helps you find your way to a destination, leaving you free to enjoy the journey.

Select **Menu** > **Maps** and **Drive** or **Walk**.


When you use drive or walk navigation for the first time, you are asked to select the language of the voice guidance, and download the appropriate files.

If you select a language that includes street names, also the street names are said aloud.

Change the voice guidance language

In the main view, select  > **Navigation** > **Drive guidance** or **Walk guidance** and the appropriate option.

Deactivate voice guidance

In the main view, select  > **Navigation** > **Drive guidance** or **Walk guidance**, and select **None**.

Repeat the voice guidance for car navigation

In the navigation view, select **Options** > **Repeat**.

Change the volume of the voice guidance for car navigation

In the navigation view, select **Options** > **Volume**.

Drive to your destination

When you need turn-by-turn directions while driving, Maps helps you get to your destination.

Select **Menu** > **Maps** and **Drive**.

Drive to a destination

Select **Set destination** and the appropriate option.



Drive to your home

Select **Drive home**.

You can start driving without a set destination. The map follows your location, and traffic information is automatically displayed, if available. To set the destination later, select **Destination**.


By default, the map rotates to your driving direction.

Orient the map to north

Select . To rotate the map back to your driving direction, select .

When you select **Drive home** or **Walk home** for the first time, you are prompted to define your home location.

Change your home location

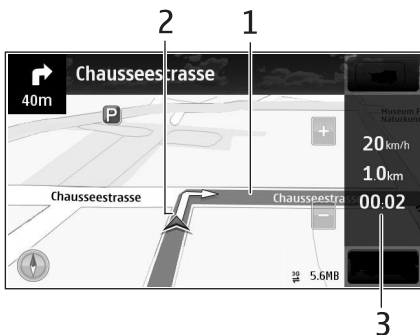
- 1 In the main view, select .
- 2 Select **Navigation > Home Location > Redefine**.
- 3 Select the appropriate option.

Change views during navigation

Swipe left to select **2D view**, **3D view**, **Arrow view**, or **Route overview**.

Obey all local laws. Always keep your hands free to operate the vehicle while driving. Your first consideration while driving should be road safety.

Navigation view



- 1 Route
- 2 Your location and direction
- 3 Information bar (speed, distance, time)

Get traffic and safety information

Enhance your driving experience with real-time information about traffic events, lane assistance, and speed limit warnings, if available for your country or region.

Select **Menu** > **Maps and Drive**.

View traffic events on the map

During drive navigation, select **Options** > **Traffic info**. The events are displayed as triangles and lines.

Update traffic information

Select **Options** > **Traffic info** > **Update traffic info**.

When planning a route, you can set the device to avoid traffic events, such as traffic jams or roadworks.

Avoid traffic events

In the main view, select  > **Navigation** > **Reroute due to traffic**.

The location of speed cameras may be shown on your route during navigation, if this feature is enabled. Some jurisdictions prohibit or regulate the use of speed camera location data. Nokia is not responsible for the accuracy, or the consequences of using speed camera location data.

Walk to your destination

When you need directions to follow a route on foot, Maps guides you over squares, and through parks, pedestrian zones, and even shopping centres.

Select **Menu** > **Maps and Walk**.

Walk to a destination

Select **Set destination** and the appropriate option.

Walk to your home

Select **Walk home**.

You can start walking without a set destination.


By default, the map is oriented to north.

Rotate the map to your walking direction

Select . To rotate the map back to north, select .

When you select **Drive home** or **Walk home** for the first time, you are prompted to define your home location.

Change your home location

- 1 In the main view, select .
- 2 Select **Navigation > Home Location > Redefine**.
- 3 Select the appropriate option.

Plan a route

Plan your journey, and create your route and view it on the map before setting off.

Select **Menu > Maps and Map**.

Create a route

- 1 Tap the location of your starting point. To search for an address or place, select **Search**.
- 2 Tap the location's information area.
- 3 Select **Navigate > Add to Route**.
- 4 To add another route point, select **Add new route point** and the appropriate option.

Tip: If you want to plan a route from the convenience of your computer, and copy it to your device, go to the Ovi Maps web service at www.ovi.com.

Change the order of the route points

- 1 Select a route point.
- 2 Select **Move**.
- 3 Tap the place where you want to move the route point to.

Edit the location of a route point

Tap the route point, and select **Edit** and the appropriate option.

View the route on the map

Select **Show route**.

Navigate to the destination

Select **Show route > Options > Start driving** or **Start walking**.

The route settings affect the navigation guidance and the way the route is displayed on the map.

Change the settings for a route

- 1 In the route planner view, open the **Settings** tab. To get to the route planner view from the navigation view, select **Options > Route points** or **Route points list**.

- 2 Set the transportation mode to **Drive** or **Walk**. If you select **Walk**, one-way streets are regarded as normal streets, and walkways and routes through, for example, parks and shopping centres, can be used.
- 3 Select the desired option.

Select the walking mode

Open the Settings tab, set the transportation mode to **Walk**, and select **Preferred route** > **Streets** or **Straight line**. **Straight line** is useful on off-road terrain as it indicates the walking direction.

Use the faster or shorter driving route

Open the Settings tab, set the transportation mode to **Drive**, and select **Route selection** > **Faster route** or **Shorter route**.

Use the optimised driving route

Open the Settings tab, set the transportation mode to **Drive**, and select **Route selection** > **Optimised**. The optimised driving route combines the advantages of both the shorter and the faster routes.

You can also choose to allow or avoid using, for example, motorways, toll roads, or ferries.

Give feedback on Maps

Participate in improving the Maps application, and send your feedback.

Select **Menu** > **Maps**.

- 1 Select **?** > **Feedback**.
- 2 Select how likely you are to recommend Maps to other people. You can also give your reasons. The feedback is anonymous.
- 3 Select **Submit**.

To give feedback, you need to have an active internet connection.

After you have sent your feedback for the current version of Maps, the option is no longer available.

Report incorrect map information

If you notice that information on the map is incorrect or missing, report it to Nokia.

Select **Menu** > **Maps and More** > **Map Reporter**.

100 Time management

The service may not be available for your country or region. Reporting incorrect or missing information requires an internet connection.

You can report issues, such as:

- Missing or incorrect street names
- Streets that are blocked or unsuitable for walking on
- Incorrect restrictions or speed limits

You can add further details when reporting.

Time management

Clock

About the clock



Select **Menu** > **Applications** > **Clock**.

Set and manage alarms, and check local times in different countries and cities.

Set the time and date

On the home screen, select the clock and **Options** > **Settings** > **Time or Date**.

Tip: To view the time and date when the screen and keys are locked, press and hold the menu key.

Set an alarm

You can use your device as an alarm clock.

On the home screen, select the clock.

- 1 Select **New alarm**.
- 2 Set the alarm time, and enter a description.
- 3 To set the alarm to sound, for example, at the same time every day, select **Repeat**.

Remove an alarm

Select and hold the alarm, and from the pop-up menu, select **Delete alarm**.

Snooze an alarm

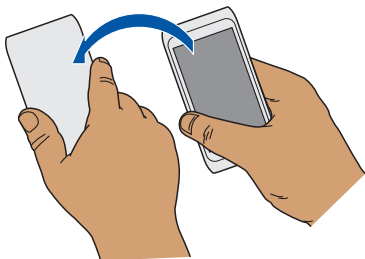
When an alarm sounds, you can snooze the alarm. This pauses the alarm for a defined length of time.

When the alarm sounds, select **Snooze**.

Set the length of the snooze time

- 1 On the home screen, select the clock.
- 2 Select **Options** > **Settings** > **Alarm snooze time**, and set the length of time.

Tip: You can snooze alarms also by turning your device display down.



Activate turning control for snoozing

Select **Menu** > **Settings** and **Phone** > **Sensor settings** > **Silence alarms** > **On**.

Update the time and date automatically

You can set your device to update the time, date, and time zone automatically.

On the home screen, select the clock and **Options** > **Settings** > **Automatic time update** > **On**.

Automatic update is a network service.

Change the time zone when travelling

You can set the clock to the local time when travelling abroad.

On the home screen, select the clock, and open the world clock tab.

Add a location

Select **Options** > **Add location** and a location.

Set your current location

Select and hold a location, and from the pop-up menu, select **Set as current location**.

The time in your device is changed according to the selected location. Make sure the time is correct.

Check the time in different cities

To view the time in different locations, add them to your world clock tab. You can also add pictures for the locations, for example, a picture of your friend who lives in the city in question, or a view from your favourite tourist attraction.

On the home screen, select the clock, and open the world clock tab.

Add a location

Select **Options** > **Add location** and a location. You can add up to 15 locations.

Add a picture for a location

Select and hold a location, and from the pop-up menu, select **Change image** and a picture.

Calendar

About the calendar


12 Select **Menu** > **Calendar**.

With your device calendar, you can keep your schedules organised.

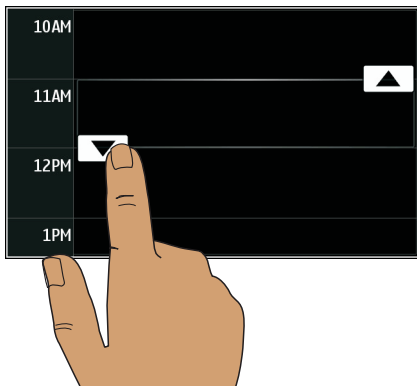
Add a calendar entry

Save your important appointments to your calendar as calendar entries.

On the home screen, select the date.

- 1 Select (**Tap to create entry**), or if there are existing entries, tap the area below an entry. The calendar entry type is meeting by default.
- 2 Fill in the fields.
- 3 To repeat the calendar entry at regular intervals, select  and the time interval. Select **Repeat until**, and enter the end date.
- 4 Select **Done**.

Tip: You can also add a calendar entry in the day view. Select and hold the starting time, and drag the arrows to set the duration.



View your schedule for the week

You can browse your calendar entries in different views. To easily check all the entries for a particular week, use the week view.

On the home screen, select the date.

Select the number of the desired week.

Tip: To increase or decrease the size of the viewable area, place two fingers on the screen, and slide them apart or together.

Browse your calendar in different views

Want to see all your calendar entries for a particular day? You can browse your calendar entries in different views.

On the home screen, select the date.

Select **Options** > **Change view** and the desired view.



Tip: To go to the previous or next day, week, or month, in the appropriate view, swipe left or right.

Add a task to your to-do list

Do you have important tasks to handle at work, library books to return, or maybe an event you want to attend? You can add tasks (to-do notes) to your calendar. If you have a particular deadline, set a reminder.

104 Time management

On the home screen, select the date.


- 1 Select **(Tap to create entry)**, or if there are existing entries, tap the area below an entry.
- 2 Select the entry type field , and select **To-do** as the entry type.
- 3 Fill in the fields.
- 4 To add a reminder for the task, select .
- 5 Select **Done**.

Send a meeting request

You can create meeting requests, and send them to the participants.

On the home screen, select the date.


Before you can create and send a new meeting request, you need to set up a mailbox.

- 1 In a calendar view, select and hold a calendar entry, and from the pop-up menu, select **Send > Via mail**.
- 2 Add the meeting participants as recipients of the request mail.
- 3 To send the request, select .

Remember a birthday

You can add a reminder for birthdays and other special dates. The reminders are repeated annually.

On the home screen, select the date.

- 1 Go to the desired date, and select **(Tap to create entry)**, or if there are existing entries, tap the area below an entry.
- 2 Select the entry type field , and select **Anniversary** as the entry type.
- 3 Fill in the fields, and select **Done**.

Use separate calendars for work and free time

You can have more than one calendar. Create one for work and another for your free time.

On the home screen, select the date.

Create a new calendar


- 1 Select **Options > Manage calendars**.
- 2 Select **Options > Create new calendar**.
- 3 Enter a name, and set a colour code for the calendar.

- 4 Define the visibility for the calendar. When a calendar is hidden, the calendar entries and reminders are not displayed in different calendar views or on the home screen.
- 5 Select **Done**.

Modify the settings for a calendar

- 1 In the **Manage calendars** view, select the desired calendar.
- 2 Change the name, colour, and visibility.
- 3 Select **Done**.

Add an entry to a particular calendar


- 1 When adding a calendar entry, select  and the calendar.
- 2 Select **Done**.

Colour codes indicate which calendar an entry belongs to.

Add the location to a calendar entry

Do you have an appointment in a place you have never visited? You can add the location information to your calendar entry.

On the home screen, select the date.

- 1 Select (**Tap to create entry**), or if there are existing entries, tap the area below an entry.
- 2 Select  **Add location**, and select the location in the Maps application. You can also manually enter the location in the text field.
- 3 Select **Done**.

Office

Quickoffice

About Quickoffice



Select Menu > Office > Quickoffice.

Quickoffice consists of the following:

- Quickword for viewing and editing Microsoft Word documents
- Quicksheet for viewing and editing Microsoft Excel worksheets
- Quickpoint for viewing and editing Microsoft PowerPoint presentations

Not all file formats or features are supported.

Read Microsoft Word, Excel, and PowerPoint documents

You can view Microsoft Office documents, such as Word documents, Excel worksheets, or PowerPoint presentations.

Select **Menu > Office > Quickoffice.**

Open a file

Select **Browse files** and the memory where the file is stored, browse to the correct folder, and select the file.

Sort files

Select **Options > Sort by.**

Not all formats or features are supported.

Edit a document

With Quickoffice, you can edit Microsoft Word documents.

Select **Menu > Office > Quickoffice.**

Create a new document

Select **New document.**

Insert text

Select an empty area, and enter text.

Edit text

Select a paragraph.

Format text

To edit the font and paragraph properties, select **Options > Format.**

Edit a workbook

With Quickoffice, you can edit Microsoft Excel workbooks.

Select **Menu > Office > Quickoffice.**

Create a new document

Select **New document.**

Edit a cell

Select the cell and **Options** > **Edit cell**. To insert a function, in the editing view, select **Options** > **Insert function**.

Edit a presentation

With Quickoffice, you can edit Microsoft PowerPoint presentations.

Select **Menu** > **Office** > **Quickoffice**.

Create a new document

Select **New document**.

Add a slide

Select **Options** > **Slide options** > **Insert new slide**.

Insert an image, textbox, shape, or other element

Select **Options** > **Insert**.

Edit text

Select a textbox and **Options** > **Edit textbox**.

Read PDF documents



With Adobe Reader, you can read PDF documents.

Select **Menu** > **Office** > **Adobe Reader**.

Open a file

Select the memory where the file is stored, browse to the correct folder, and select the file.

Calculator

Make a calculation



Select **Menu** > **Office** > **Calculator**.

- 1 Enter the first number of the calculation.
- 2 Select a function, such as add or subtract.
- 3 Enter the second number of the calculation.
- 4 Select =.

Save or retrieve the result of a calculation

Select **Options** > **Memory** > **Save or Recall**.

Write notes

About Notes



Select **Menu** > **Office** > **Notes**.

You can write notes, such as meeting memos, and save received plain text files (TXT files) to the Notes application.

Make a shopping list

Shopping lists on paper are easy to lose. Instead of writing them on paper, you can make your shopping lists with Notes. This way, you always have the list with you! You can also send the list to, for example, a family member.

Select **Menu** > **Office** > **Notes**.

- 1 Select **Options** > **New note**.
- 2 Enter text in the note field.

Send the list

Open the note, and select **Options** > **Send** and the sending method.

Translate words from one language to another



You can translate words from one language to another. Not all languages may be supported.

Select **Menu** > **Office** > **Dictionary**.

- 1 Enter text in the search field. Suggestions of words to translate are displayed.
- 2 Select the word from the list.

Change the source or target language

Select **Options** > **Languages** > **Source** or **Target**.

Download more languages from the internet

Select **Options** > **Languages** > **Download languages**.

English is preinstalled, and you can add two additional languages.

Open or create zip files

You can open and extract files from zip files. You can also create new zip files, to store and compress files.



Select Menu > Office > Zip.

Access your company intranet



You can use your device to connect to your company intranet.

Select Menu > Office > Intranet.

- 1 Select **Options** > **Settings**. For the relevant settings, contact your system administrator. You must also define a VPN access point.
- 2 Select **Options** > **Connect**.

Tip: If you have several intranet destinations, for example, partner extranets, defined in Connection settings, to define which intranet to browse, select **Manual connection**.

Chat with your colleagues



You can communicate and collaborate with your colleagues in the office and around the world.

- 1 Select **Menu** > **Office** and **Communicator**.
- 2 Define the settings.

Some services may not be available in all countries, and may be provided only in selected languages. The services may be network dependent. For more information, contact your network service provider.

Using the service or downloading content may cause transfer of large amounts of data, which may result in data traffic costs.

Connectivity

Internet connections

Define how your device connects to the internet

Your device automatically checks for and connects to an available known network when a network connection is needed. Selection is based on the connection settings, unless there are application-specific settings applied.

Select **Menu** > **Settings** and **Connectivity** > **Settings**.

Automatically switch to a known WLAN connection when available

Select **Switch to WLAN > Known WLANs only**.

You can also connect to WLANs manually using the WLAN wizard application.

Only use a WLAN connection

For WLAN connections when in your home network, select **Data use in home country > WLAN only**. For WLAN connections when outside your home network, select **Data use when abroad > WLAN only**.

Automatically use a packet data connection when in your home network

Select **Data use in home country > Automatic**.

To set the device to connect only through your home network service provider when in your home country, select **Data use in home country > Home network only**. To set the device to request confirmation before connecting, select **Data use in home country > Always ask**.

Request confirmation before using a packet data connection when outside your home network

Select **Data use when abroad > Always ask**.

To set the device to automatically connect, select **Data use when abroad > Automatic**. Opening connections when abroad can raise data transfer costs substantially.

Create a new access point

Select **Destinations > Access point**.

Change access point priority for the internet connection

- 1 Select **Destinations > Internet**.
- 2 Select and hold an access point, and from the pop-up menu, select **Change priority**.
- 3 Tap the position in the list to move the access point to.

Example: If a WLAN access point is ranked above a packet data access point in the list, the device will always try to first connect to the WLAN access point, only connecting to the packet data access point if the WLAN is not available.

Wireless LAN

About WLAN connections

 Select **Menu > Settings and Connectivity > WLAN**.

The WLAN wizard application helps you connect to a wireless local area network (WLAN) and manage your WLAN connections.



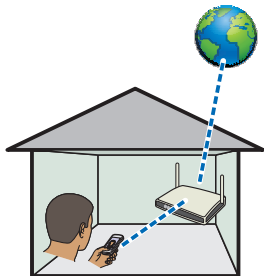
Important: Use encryption to increase the security of your WLAN connection. Using encryption reduces the risk of others accessing your data.



Note: Using WLAN may be restricted in some countries. For example, in France, you are only allowed to use WLAN indoors. For more information, contact your local authorities.

Connect to a WLAN at home

To help save data costs, connect to your home WLAN when you are at home and want to browse the web on your device.



- 1 Select **Menu** > **Settings and Connectivity** > **WLAN**.
- 2 Select and hold your home WLAN, and from the pop-up menu, select **Start web browsing**.

If your home WLAN is secured, enter the passcode. If your home WLAN is hidden, select **Other (hidden netw.)**, and enter the network name (service set identifier, SSID).

Close the WLAN connection

Select and hold the connection, and from the pop-up menu, select **Disconnect WLAN**.

Connect to a WLAN on the move


Connecting to a WLAN is a handy way of accessing the internet when not at home. Connect to public WLANs in public places, such as a library or internet café.

- 1 Select **Menu** > **Settings and Connectivity** > **WLAN**.

- 2 Select and hold the desired WLAN connection, and from the pop-up menu, select **Start web browsing**.

Bluetooth

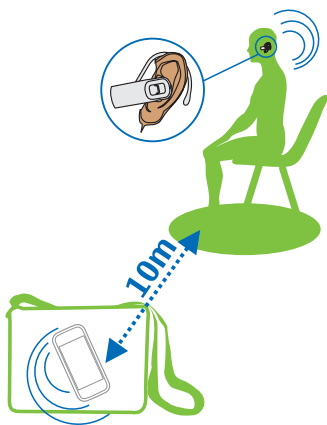
About Bluetooth connectivity

-  Select **Menu > Settings and Connectivity > Bluetooth**.

With Bluetooth connectivity, you can make a wireless connection to other compatible devices, such as mobile devices, computers, headsets, and car kits.

You can use the connection to send items from your device, transfer files from your compatible PC, and print files with a compatible printer.

Since devices with Bluetooth wireless technology communicate using radio waves, they do not need to be in direct line-of-sight. However, they must be within 10 metres (33 feet) of each other, although the connection may be subject to interference from obstructions such as walls or from other electronic devices.



When the device is locked, only connections to authorised devices are possible.

Connect to a wireless headset

With a wireless headset you can answer a call even if your device is not directly at hand, and you can have your hands free, for example, to continue working at your computer during a call. Wireless headsets are available separately.

- 1 Select **Menu** > **Settings and Connectivity** > **Bluetooth** > **On**.
- 2 Switch the headset on.
- 3 To pair your device and the headset, open the **Paired devices** tab.
- 4 Select the headset.
If the headset is not displayed in the list, to search for it, select **Options** > **New paired device**.
- 5 You may need to enter a passcode. For details, see the user guide of the headset.

Send a picture or other content to another device using Bluetooth

You can use Bluetooth to send pictures, videos, business cards, calendar entries, and other content to your friend's compatible devices and to your computer.

You can have several Bluetooth connections active at a time. For example, if you are connected to a compatible headset, you can also send files to another compatible device at the same time.

- 1 Select and hold the item, for example, a picture. From the pop-up menu, select **Send** > **Via Bluetooth**.
- 2 Select the device to connect to. If the desired device is not displayed, to search for it, select **More devices**. When searching, Bluetooth devices within range are displayed.
- 3 If the other device requires a passcode, enter the passcode. The passcode, which you can define yourself, must be entered in both devices. The passcode in some devices is fixed. For details, see the user guide of the other device.
The passcode is valid only for the current connection.
- 4 If you connect to a device frequently, to set it as authorised, accept the authorisation query **Authorise device to make connections automatically?** when pairing.
When a device is authorised, you do not have to enter the passcode every time.

Connect to a car kit using remote SIM mode

With remote SIM mode, a compatible car kit can use the SIM card of your device.

Select **Menu** > **Settings and Connectivity** > **Bluetooth**.

Before remote SIM mode can be activated, your device and accessory must be paired. Initiate the pairing from the car kit accessory.

- 1 To activate Bluetooth, select **Bluetooth** > **On**.
- 2 To activate remote SIM mode in your device, select **Remote SIM mode** > **On**.
- 3 Activate Bluetooth in the car kit accessory.

When remote SIM mode is activated, **Remote SIM mode** is displayed in the home screen. The connection to the wireless network is closed, and you cannot use SIM card services or features that require cellular network coverage.

To make or receive calls when in remote SIM mode, you need to have a compatible accessory, such as a car kit, connected to your device.

Your device will only allow emergency calls in this mode.

Deactivate remote SIM mode

Press the power key, and select **Exit remote SIM mode**.

Block a device

You can prevent devices from creating a Bluetooth connection to your device.

Select **Menu > Settings and Connectivity > Bluetooth**.

Open the Paired devices tab, select and hold the device you want to block, and from the pop-up menu, select **Block**.

Remove a device from the blocked devices list

Open the Blocked devices tab, select and hold the device you want to remove from the list, and from the pop-up menu, select **Delete**.

If you reject a pairing request from another device, you are asked if you want to add the device to the list of blocked devices.

Protect your device

When Bluetooth is activated in your device, you can control who can find and connect to your device.

Select **Menu > Settings and Connectivity > Bluetooth**.

Prevent others from detecting your device

Select **My phone's visibility > Hidden**.

When your device is hidden, others cannot detect it. However, paired devices can still connect to your device.

Deactivate Bluetooth

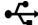
Select **Bluetooth > Off**.

Do not pair with or accept connection requests from an unknown device. This helps to protect your device from harmful content.

USB data cable

Copy a picture or other content between your device and a computer


You can use a USB data cable to copy pictures and other content between your device and a computer.

- 1 To make sure that Media transfer is set as the USB mode, select **Menu > Settings and Connectivity > USB > Media transfer**.
- 2 Use a compatible USB  data cable to connect your device to a computer.
The device is displayed as a portable device on your computer. If Media transfer mode does not work on your computer, use Mass storage mode instead.
- 3 Use the file manager of the computer to copy the content.


Change the USB mode

For best results when copying content or synchronising your device with your computer, activate the appropriate USB mode when using a USB data cable to connect to various devices.

Select **Menu > Settings and Connectivity > USB** and from the following:


 **Nokia Ovi Suite** — Connect your device to a compatible computer that has Nokia Ovi Suite installed. In this mode, you can synchronise your device with Ovi Suite and use other Ovi Suite features.

This mode is activated automatically when you open the Ovi Suite application.

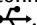
 **Mass storage** — Connect your device to a compatible computer that does not have Ovi Suite installed. Your device is recognised as a USB flash memory. You can also connect your device to other devices, such as a home or car stereo, to which you can connect a USB drive.

While connected to a computer in this mode, you may not be able to use some of the device applications.

The mass memory in your device cannot be accessed by the other device.

 **Media transfer** — Connect your device to a compatible computer that does not have Ovi Suite installed. Music protected by digital rights management (DRM) must be transferred in this mode. Some home entertainment systems and printers can also be used in this mode.

 **Conn. PC to net** — Connect your device to a compatible computer, and use the device as a wireless modem. The computer connects to the internet automatically.

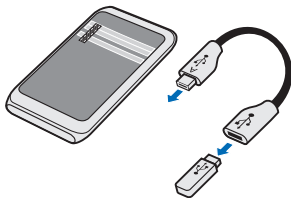
Tip: When the USB cable is connected, you can change the USB mode in most views. In the top right corner, select .

Connect a USB mass storage device

With the USB On-The-Go (OTG) adapter, you can connect your device to a compatible USB memory stick or hard drive. For example, you can save your pictures on a USB memory stick without needing to connect to a PC.

Connect a memory stick

- 1 Connect the micro-USB end of the USB OTG adapter to the USB port in your device.
- 2 Connect a memory stick to the USB OTG adapter.



The File manager application opens, and the memory stick is displayed as a mass memory.

Copy or move a file

In File manager, select and hold the file you want to copy or move, and from the pop-up menu, select the desired option and the target folder.

If you connect a hard drive that requires more power than your device can supply, an error message is displayed. You need to connect an external power source to the hard drive.

VPN connections

Select **Menu > Settings and Connectivity > Settings > VPN**.

You need a virtual private network (VPN) connection to, for example, browse your company intranet or access your work mails remotely.

VPN policies define how data is encrypted and how your company authenticates your device. To configure the VPN client, certificates, and policies, contact your company's IT department. After installing a policy, a VPN connection method is automatically added to an intranet destination.

For more information, search for mobile VPN at www.nokia.com.

Close a network connection

If several applications are using an internet connection, you can use the Connection manager application to close some or all network connections.

Select **Menu** > **Settings and Connectivity** > **Connection manager**.

Select and hold the connection, and from the pop-up menu, select **Disconnect**.

In the active data connections view, you can see your current network connections.  indicates a packet data connection, and  indicates a wireless local area network (WLAN) connection.

View details for a connection

Select and hold the connection, and from the pop-up menu, select **Details**.

Details, such as the amount of transferred data and connection duration, are displayed.

Tip: In most views, to open the Connection manager application, select the notification area in the top right corner and  > **Connection manager**.

Store your files on a remote drive

If you want to back up your data or save space on your device, you can use a remote drive for storing and managing your files.

Select **Menu** > **Settings and Connectivity** > **Remote drives**.

You may receive the remote drive settings as a configuration message from your service provider. Open the message, and save the settings.

The service may be chargeable. For information on availability and possible costs, contact your service provider.

Connect to a remote drive

Select and hold the remote drive, and from the pop-up menu, select **Connect**.

Add a new remote drive

- 1 Select **Options** > **New drive**.
- 2 Enter the name of the remote drive.
- 3 Enter the web address of the remote drive, including the port number.
- 4 To select the access point to use to connect to the remote drive, select **Access point** > **User defined**. If you select **Ask when needed**, you are prompted for the destination or access point every time the application connects to the network.
- 5 Enter your user name and password, if required by the remote drive service.

Modify the settings of an existing remote drive

Select **Remote drives** and the desired drive.

Use the **File manager** application to access your remote drives and manage stored files.

Device management

Keep your device software and applications up to date

About device software and application updates

With device software updates and application updates, you can get new features and enhanced functions for your device. Updating the software may also improve your device performance.



It is recommended that you back up your personal data before updating your device software.



Warning:

If you install a software update, you cannot use the device, even to make emergency calls, until the installation is completed and the device is restarted.

Using services or downloading content may cause transfer of large amounts of data, which may result in data traffic costs.

Before starting the update, connect a charger or make sure the device battery has enough power.

After the update, the instructions in the user guide may no longer be up to date.

Update device software and applications using your device



You can check if there are updates available for your device software or for individual applications, and then download and install them to your device (network service). You can also set your device to automatically check for updates and notify you when important or recommended updates are available.

Select **Menu** > **Applications** > **SW update**.

If there are available updates, select which updates to download and install, and select



Set your device to automatically check for updates

Select **Options** > **Settings** > **Auto-check for updates**.

Update device software using your PC

You can use the Nokia Ovi Suite PC application to update your device software. You need a compatible PC, a high-speed internet connection, and a compatible USB data cable to connect your device to the PC.

To get more information and to download the Nokia Ovi Suite application, go to www.ovi.com/suite.

Manage files

About File manager



Select **Menu** > **Office** > **File mgr..**

With File manager, you can browse, manage, and open files on your device.

View the files stored on your device

Select **Menu** > **Office** > **File mgr.** and the desired memory.

The folders on the root of the memory are displayed.

Organise files

You can create new folders, to help organise your files. This can make it easier to back up or upload your content. Within folders, you can copy, move, or delete files and subfolders.

Select **Menu** > **Office** > **File mgr..**

Create a new folder

In the folder where you want to create a subfolder, select **Options > New folder**.

Copy or move a file to a folder

Select and hold the file, and from the pop-up menu, select the appropriate option.

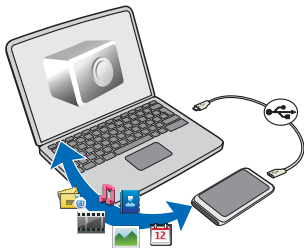
Delete a file from a folder

Select and hold the file, and from the pop-up menu, select the appropriate option.

Tip: To copy, move, or delete several files at the same time, select **Options > Mark multiple items**.

Back up files

Want to make sure that you will not lose any important files? You can back up the device memory to a compatible computer.



- 1 Open Nokia Ovi Suite on your PC.
- 2 Connect your device to your PC using Nokia Ovi Suite mode.
- 3 In Ovi Suite, select **Tools > Backup**.

It is recommended that you back up the device memory regularly to a compatible computer.

Tip: If you have DRM-protected content, use Nokia Ovi Suite to back up both the licences and the content to your computer.

Format the mass memory

Want to delete all content from your device mass memory? When you format the mass memory, all the data on it is deleted.

Back up all data you want to keep before formatting the mass memory. All data is permanently deleted.

- 1 Select **Menu** > **Office** > **File mgr.**
- 2 Select and hold the mass memory, and from the pop-up menu, select **Format**.

Do not format the mass memory using PC software, because it may cause degraded performance.

You can use Nokia Ovi Suite to back up data to a compatible computer. Digital rights management (DRM) technologies may prevent some backup data from being restored. For more information about DRM used for your content, contact your service provider.

Increase available memory so you can add more content

Do you need to increase the available device memory, so you can install more applications or add more content?

You can delete the following if no longer needed:


- Text, multimedia, and mail messages
- Contact entries and details
- Applications
- Installation files (.sis or .six) for installed applications
- Music, pictures, or videos

Copy content you want to keep to the mass memory or to a compatible computer.

Tip: If expired trial or demo applications are installed, remove them.

Manage applications

About Application manager

 Select **Menu** > **Settings** and **Application manager**.

With Application manager you can view details of installed applications, remove applications, and define installation settings.

You can install the following types of applications:

- Java™ ME applications that have the .jad or .jar file extension
- Applications, compatible with the Symbian operating system, that have the .sis or .six file extension
- Widgets that have the .wgz file extension

Only install applications that are compatible with your device.

Remove an application from your device

You can remove installed applications that you no longer want to keep or use, to increase the amount of available memory.

Select **Menu > Settings and Application manager**.

- 1 Select **Installed apps**..
- 2 Select and hold the application to remove, and from the pop-up menu, select **Uninstall**.

If you remove an application, you can only reinstall it, if you have the original installation file or a full backup of the removed application. You may not be able to open files created with a removed application.

If an installed application depends on a removed application, the installed application may stop working. For details, see the user documentation of the installed application.

The installation files may use large amounts of memory and prevent you from storing other files. Use Nokia Ovi Suite to back up installation files to a compatible PC, then file manager to remove the installation files from the device memory.

Synchronise content About Sync

 Select **Menu > Settings and Connectivity > Data transfer > Sync**.

With the Sync application, you can synchronise your contacts, notes, and other content between your device and a remote server. After the synchronisation, you have a back-up of your important data on the server.



Synchronise content between your device and a remote server

Would you like to have your calendar, notes, and other content backed up and at hand, whether you are sitting by your computer or on the go with your mobile device? With

the Sync application, you can synchronise the important content between your device and a remote server.

Select **Menu** > **Settings and Connectivity** > **Data transfer** > **Sync**.

You may receive synchronisation settings as a configuration message from your service provider. The synchronisation settings are saved as a synchronisation profile. When you open the application, the default or previously used synchronisation profile is displayed.

Include or exclude content types

Select a content type.

Synchronise data

Select **Options** > **Synchronise**.

Tip: To synchronise content between your device and Ovi, you can use the Ovi Sync application.

About Ovi Sync



Select **Menu** > **Applications** > **Tools** > **Ovi sync**.

With Ovi Sync, you can synchronise contacts, calendar entries, and notes between your device and Ovi by Nokia. This way you always have a backup of your important content. To use Ovi Sync, you need a Nokia account. If you do not have a Nokia account, create one at www.ovi.com.

If you use Ovi Sync to automatically synchronise your contacts with Ovi, do not allow synchronisation with any other service, such as Mail for Exchange, as there may be conflicts.

Back up content to Ovi

Would you like to have your calendar entries, notes, and other content on your device backed up on Ovi? With the Ovi Sync application, you can synchronise the content between your device and Ovi manually or automatically.

Select **Menu** > **Applications** > **Tools** > **Ovi sync**.

When you open the application for the first time, the synchronisation wizard helps you define the settings and select the content to synchronise.

Define the content to synchronise

Select **Options** > **Sync settings** > **Items to synchronise**.

Synchronise manually

Select **Synchronise**.

Synchronise automatically

- 1 To activate automatic synchronisation, select **Options > Sync settings > Auto-sync**.
- 2 To define how often to synchronise, select **Options > Sync settings > Scheduled sync interval**.

Copy contacts or pictures between devices

With the Phone switch application, you can use Bluetooth to synchronise and copy content between two compatible Nokia devices, free of charge.

Select **Menu > Settings > Connectivity > Data transfer > Phone switch**.

- 1 Select from the following:



— Synchronise content between two devices.



— Copy content from another device.



— Copy content to another device.

- 2 Select the device you want to connect to, and pair the devices. Bluetooth needs to be activated.
- 3 If the other device requires a passcode, enter the passcode. The passcode, which you can define yourself, must be entered in both devices. The passcode in some devices is fixed. For details, see the user guide of the device.
The passcode is valid only for the current connection.
- 4 Select the content and **OK**.

Tip: If you save the details, it is easier to later exchange the same content with the same device.

Protect your device

Set your device to lock automatically


Want to protect your device against unauthorised use? Define a lock code, and set your device to lock itself automatically when you're not using it.

- 1 Select **Menu > Settings and Phone > Phone management > Security settings > Phone and SIM card**.
- 2 Select **Lock code**, and enter a lock code. A minimum of 4 characters is required, and numbers, symbols, and upper and lower case letters can be used.

Keep the lock code secret and in a safe place separate from your device. If you forget the lock code and your device is locked, your device will require service. Additional charges may apply, and all the personal data in your device may be deleted. For more information, contact a Nokia Care point or your device dealer.

- 3 Select **Phone autolock period**, and define the length of time after which the device is locked automatically.

Lock your device manually

In the home screen, press the power key , select **Lock phone**, and enter the lock code.

Unlock your device

Slide the key lock switch, enter the lock code, and select **OK**.

If the key lock switch is out of reach, press the menu key, and select **Unlock**.

Encrypt your data

Want to protect your data against unauthorised use? You can encrypt data on your device using an encryption key.

Select **Menu > Settings > Phone > Phone management > Security settings > Encryption**.

It may take several minutes to encrypt or decrypt your data. During the encryption process, do not:

- Use your device unless you have to
- Switch your device off

If you haven't set your device to lock itself automatically when not in use, you are prompted to do so when you encrypt your data for the first time.

Encrypt the device memory

Select **Encryption off**.

Encrypt the mass memory

Select **Encryption off**.

Decrypt the device memory

Select **Encryption on**.

Decrypt the mass memory

Select **Encryption on**.

Lock your device remotely

Forgot your device at work and want to lock it to prevent unauthorised use? You can lock your device remotely using a predefined text message.

Enable remote locking

- 1 Select **Menu > Settings and Phone > Phone management > Security settings > Phone and SIM card > Remote phone locking > Enabled**.
- 2 Enter the text message content. It can be 5-20 characters, and both upper and lower case letters can be used.
- 3 Enter the same text again to verify it.
- 4 Enter the lock code.

Send the lock message

To lock the device remotely, write the predefined text, and send it to your device as a text message.

To unlock your device, you need the lock code.

Find more help

Support

When you want to learn more about how to use your product or you are unsure how your device should function, go to www.nokia.com/support, or using your mobile device, nokia.mobi/support. You can also read the in-device guide. Select **Menu > Applications > User guide**.

If this does not resolve your issue, do one of the following:

- Reboot your device. Press and hold the power key for about 8 seconds. The device vibrates three times and switches off. To switch your device on again, press the power key .
- Update your device software
- Restore the original factory settings

If your issue remains unsolved, contact Nokia for repair options. Go to www.nokia.com/repair. Before sending your device for repair, always back up your device data.

Troubleshooting

If your device stops responding

Reboot your device. Press and hold the power key **Ⓜ** for about 8 seconds. The device vibrates three times and switches off. To switch your device on again, press the power key **Ⓜ**.

No content, such as contacts or messages, is deleted.

Restore original settings

If your device is not working properly, you can reset some settings to their original values.

- 1 End all active calls and connections.
- 2 Select **Menu > Settings and Phone > Phone management > Factory settings > Restore**.
- 3 Enter the lock code.

This does not affect documents or files stored on your device.

After restoring the original settings, the device switches off, and then on again. This may take longer than usual.

What to do when the memory is full?

If either of the following messages is displayed when you are deleting several items at the same time, delete items one by one, beginning with the smallest items:

- **Not enough memory to perform operation. Delete some data first.**
- **Memory low. Delete some data from phone memory.**

Move data you want to keep to the mass memory or to a compatible computer. If possible, install applications to the mass memory, rather than the device memory.

Message indicator blinking

Q: Why is the message indicator blinking in the home screen?



A: The maximum number of messages are stored on your device. Delete some messages. The number of messages that can be stored on the SIM card is considerably lower than the number that can be stored in the device memory. You can use Nokia Ovi Suite to save messages to a compatible computer.

A contact appears twice in the contacts list

Q: I have a contact twice in my contacts list. How can I remove the extra contact?

A: You can merge two contacts into one. Select **Options > Merge contacts**, select the contacts to merge, and select **Merge**.

Unreadable characters while browsing the web

If unreadable characters are displayed, select **Menu > Web** and  >  > **Page > Default encoding** and the correct encoding for the character set of the language.

Prepare your device for recycling

If you buy a new device, or otherwise want to dispose of your device, Nokia recommends that you recycle your device. Beforehand, remove all personal information and content from your device.

Remove all content and restore settings to the default values

- 1 Back up the content you want to keep to a compatible memory card (if available) or to a compatible computer.
- 2 Close all active connections and calls.
- 3 Select **Menu > Settings and Phone > Phone management > Factory settings > Delete data and restore**.
- 4 Your device switches off and then on again. Check carefully that all your personal content, such as contacts, pictures, music, videos, notes, messages, mails, presentations, games and other installed applications have been removed. Content and information stored on the memory card or SIM card is not removed.

Protect the environment

Save energy

You do not need to charge your battery so often if you do the following:

- Close applications and data connections, such as WLAN or Bluetooth, when not in use.
- Decrease the brightness of the screen.
- Set your device to enter power saver mode after the minimum period of inactivity.
- Deactivate unnecessary sounds, such as touch screen and key tones.

Recycle



When this device has reached the end of its working life, all of its materials can be recovered as materials and energy. To guarantee the correct disposal and reuse, Nokia co-operates with its partners through a program called We:recycle. For information on how to recycle your old Nokia products and where to find collection sites, go to

www.nokia.com/werecycle, or using a mobile device, nokia.mobi/werecycle, or call the Nokia Contact Center.

Recycle packaging and user guides at your local recycling scheme.



The crossed-out wheeled-bin symbol on your product, battery, literature, or packaging reminds you that all electrical and electronic products, batteries, and accumulators must be taken to separate collection at the end of their working life. This requirement applies in the European Union. Do not dispose of these products as unsorted municipal waste. For more information on the environmental attributes of your device, see www.nokia.com/ecodeclaration.

Product and safety information

Network services and costs

Your device is approved for use on the WCDMA 850, 900, 1700, 1900, 2100 and GSM/EDGE 850, 900, 1800, 1900 MHz networks. To use the device, you need a subscription with a service provider.

Using network services and downloading content to your device requires a network connection and may result in data traffic costs. Some product features require support from the network, and you may need to subscribe to them.

Take care of your device

Handle your device, battery, charger and accessories with care. The following suggestions help you protect your warranty coverage.

- Keep the device dry. Precipitation, humidity, and all types of liquids or moisture can contain minerals that corrode electronic circuits. If your device gets wet, allow the device to dry.
- Do not use or store the device in dusty or dirty areas. Moving parts and electronic components can be damaged.
- Do not store the device in high temperatures. High temperatures can shorten the life of the device, damage the battery, and warp or melt plastics.
- Do not store the device in cold temperatures. When the device warms to its normal temperature, moisture can form inside the device and damage electronic circuits.
- Do not attempt to open the device other than as instructed in the user guide.
- Unauthorised modifications may damage the device and violate regulations governing radio devices.
- Do not drop, knock, or shake the device. Rough handling can break internal circuit boards and mechanics.
- Only use a soft, clean, dry cloth to clean the surface of the device.
- Do not paint the device. Paint can clog the moving parts and prevent proper operation.
- Keep your device away from magnets or magnetic fields.
- To keep your important data safe, store it in at least two separate places, such as your device, memory card, or computer, or write down important information.

During extended operation, the device may feel warm. In most cases, this condition is normal. If you suspect the device is not working properly, take it to the nearest authorised service facility.

130 Product and safety information

Recycle

Always return your used electronic products, batteries, and packaging materials to dedicated collection points. This way you help prevent uncontrolled waste disposal and promote the recycling of materials. Check product environmental information and how to recycle your Nokia products at www.nokia.com/werecycle, or with a mobile device, nokia.mobi/werecycle.

About Digital Rights Management

When using this device, obey all laws and respect local customs, privacy and legitimate rights of others, including copyrights. Copyright protection may prevent you from copying, modifying, or transferring images, music, and other content.

Content owners may use different types of digital rights management (DRM) technologies to protect their intellectual property, including copyrights. This device uses various types of DRM software to access DRM-protected content. With this device you can access content protected with WM DRM 10 and OMA DRM 2.0. If certain DRM software fails to protect the content, content owners may ask that such DRM software's ability to access new DRM-protected content be revoked. Revocation may also prevent renewal of such DRM-protected content already in your device. Revocation of such DRM software does not affect the use of content protected with other types of DRM or the use of non-DRM-protected content.

Digital rights management (DRM) protected content comes with an associated licence that defines your rights to use the content.

If your device has OMA DRM-protected content, to back up both the licences and the content, use the backup feature of Nokia Ovi Suite.

Other transfer methods may not transfer the licences which need to be restored with the content for you to be able to continue the use of OMA DRM-protected content after the device memory is formatted. You may also need to restore the licences in case the files on your device get corrupted.

If your device has WMDRM-protected content, both the licences and the content will be lost if the device memory is formatted. You may also lose the licences and the content if the files on your device get corrupted. Losing the licences or the content may limit your ability to use the same content on your device again. For more information, contact your service provider.

Some licences may be connected to a specific SIM card, and the protected content can be accessed only if the SIM card is inserted in the device.

Batteries and chargers

Battery and charger information

Your device has an internal, non-removable, rechargeable battery. Do not attempt to remove the battery, as you may damage the device. To replace the battery, take the device to the nearest authorised service facility.

This device is intended for use when supplied with power from the following chargers: AC-10. The exact Nokia charger model number may vary depending on the plug type, identified by E, X, AR, U, A, C, K, or B.

The battery can be charged and discharged hundreds of times, but it will eventually wear out. When the talk and standby times are noticeably shorter than normal, to replace the battery, take the device to the nearest authorised service facility.

Battery safety



Note: The battery in your device is non-removable, so refer to the battery-related statements as applicable to your device.

When you unplug a charger or an accessory, hold and pull the plug, not the cord.

When your charger is not in use, unplug it from the electrical plug and the device. Do not leave a fully charged battery connected to a charger, as overcharging may shorten the battery's lifetime. If left unused, a fully charged battery will lose its charge over time.

Always keep the battery between 15°C and 25°C (59°F and 77°F). Extreme temperatures reduce the capacity and lifetime of the battery. A device with a hot or cold battery may not work temporarily.

Accidental short-circuiting can happen when a metallic object touches the metal strips on the battery. Short-circuiting may damage the battery or the connecting object.

Do not dispose of batteries in a fire as they may explode. Dispose of batteries according to local regulations. Recycle when possible. Do not dispose as household waste.

Do not dismantle, cut, open, crush, bend, puncture, or shred cells or batteries. If a battery leaks, do not let battery liquid touch skin or eyes. If this happens, immediately flush the affected areas with water, or seek medical help.


Do not modify, remanufacture, attempt to insert foreign objects into the battery, or immerse or expose it to water or other liquids. Batteries may explode if damaged.

Use the battery and charger for their intended purposes only. Improper use, or use of unapproved batteries or incompatible chargers may present a risk of fire, explosion, or other hazard, and may invalidate any approval or warranty. If you believe the battery or charger is damaged, take it to a service centre for inspection before continuing to use it. Never use a damaged battery or charger. Only use the charger indoors.

Additional safety information

Emergency calls

Make an emergency call

- 1 Ensure the device is switched on.
- 2 Check for adequate signal strength. You may also need to do the following:
 - Insert a SIM card.
 - Remove call restrictions you have activated for your device, such as call barring, fixed dialling, or closed user group.
 - Ensure your device is not in an offline or flight profile.
 - If the device screen and keys are locked, unlock them.
- 3 To clear the display, press the menu key as many times as needed.
- 4 Select Call.
- 5 Enter the official emergency number for your present location.
- 6 Select .
- 7 Give the necessary information as accurately as possible. Do not end the call until given permission to do so.

When you switch your device on for the first time, you may be asked to create a Nokia account. To make an emergency call during the account setup, press the menu key.



Important: Activate both cellular and internet calls, if your device supports internet calls. The device may attempt to make emergency calls both through cellular networks and through your internet call service provider. Connections in all conditions cannot be guaranteed. Never rely solely on any wireless device for essential communications like medical emergencies.

Small children

Your device and its accessories are not toys. They may contain small parts. Keep them out of the reach of small children.

Medical devices

Operation of radio transmitting equipment, including wireless phones, may interfere with the function of inadequately protected medical devices. Consult a physician or the manufacturer of the medical device to determine whether they are

132 Product and safety information

adequately shielded from external RF energy. Switch off your device when regulations posted instruct you to do so, for example, in hospitals.

Implanted medical devices

Manufacturers of medical devices recommend a minimum separation of 15.3 centimetres (6 inches) between a wireless device and an implanted medical device, such as a pacemaker or implanted cardioverter defibrillator, to avoid potential interference with the medical device. Persons who have such devices should:

- Always keep the wireless device more than 15.3 centimetres (6 inches) from the medical device.
- Not carry the wireless device in a breast pocket.
- Hold the wireless device to the ear opposite the medical device.
- Turn the wireless device off if there is any reason to suspect that interference is taking place.
- Follow the manufacturer directions for the implanted medical device.

If you have any questions about using your wireless device with an implanted medical device, consult your health care provider.

Hearing



Warning:

When you use the headset, your ability to hear outside sounds may be affected. Do not use the headset where it can endanger your safety.

Some wireless devices may interfere with some hearing aids.

Nickel



Note: The surface of this device does not contain nickel in the platings. The surface of this device contains stainless steel.

Protect your device from harmful content

Your device may be exposed to viruses and other harmful content. Take the following precautions:

- Be cautious when opening messages. They may contain malicious software or otherwise be harmful to your device or computer.
- Be cautious when accepting connectivity requests, browsing the internet, or downloading content. Do not accept Bluetooth connections from sources you do not trust.
- Only install and use services and software from sources that you trust and that offer adequate security and protection.
- Install antivirus and other security software on your device and any connected computer. Only use one antivirus application at a time. Using more may affect performance and operation of the device and/or computer.
- If you access preinstalled bookmarks and links to third party internet sites, take the appropriate precautions. Nokia does not endorse or assume liability for such sites.

Operating environment

This device meets RF exposure guidelines in the normal use position at the ear or at least 1.5 centimetres (5/8 inch) away from the body. Any carry case, belt clip, or holder for body-worn operation should not contain metal and should position the device the above-stated distance from your body.

To send data files or messages requires a quality connection to the network. Data files or messages may be delayed until such a connection is available. Follow the separation distance instructions until the transmission is completed.

Vehicles

Radio signals may affect improperly installed or inadequately shielded electronic systems in motor vehicles such as electronic fuel injection, electronic antilock braking, electronic speed control, and air bag systems. For more information, check with the manufacturer of your vehicle or its equipment.

Only qualified personnel should install the device in a vehicle. Faulty installation or service may be dangerous and may invalidate your warranty. Check regularly that all wireless device equipment in your vehicle is mounted and operating properly. Do not store or carry flammable liquids, gases, or explosive materials in the same compartment as the device, its parts, or accessories. Remember that air bags inflate with great force. Do not place your device or accessories in the air bag deployment area.

Switch off your device before boarding an aircraft. The use of wireless devices in an aircraft may be dangerous to the operation of the aircraft and may be illegal.

Potentially explosive environments

Switch off your device in any area with a potentially explosive atmosphere. Obey all posted instructions. Sparks in such areas could cause an explosion or fire resulting in bodily injury or death. Switch off the device at refuelling points such as near gas pumps at service stations. Observe restrictions in fuel depots, storage, and distribution areas; chemical plants; or where blasting operations are in progress. Areas with a potentially explosive atmosphere are often, but not always, clearly marked. They include areas where you would be advised to turn off your vehicle engine, below deck on boats, chemical transfer or storage facilities and where the air contains chemicals or particles such as grain, dust, or metal powders. You should check with the manufacturers of vehicles using liquefied petroleum gas (such as propane or butane) to determine if this device can be safely used in their vicinity.

Certification information (SAR)

This mobile device meets guidelines for exposure to radio waves.

Your mobile device is a radio transmitter and receiver. It is designed not to exceed the limits for exposure to radio waves recommended by international guidelines. These guidelines were developed by the independent scientific organisation ICNIRP and include safety margins designed to assure the protection of all persons, regardless of age and health.

The exposure guidelines for mobile devices employ a unit of measurement known as the Specific Absorption Rate or SAR. The SAR limit stated in the ICNIRP guidelines is 2.0 watts/kilogram (W/kg) averaged over 10 grams of tissue. Tests for SAR are conducted using standard operating positions with the device transmitting at its highest certified power level in all tested frequency bands. The actual SAR level of an operating device can be below the maximum value because the device is designed to use only the power required to reach the network. That amount changes depending on a number of factors such as how close you are to a network base station.

The highest SAR value under the ICNIRP guidelines for use of the device at the ear is 0.56 W/kg.

Use of device accessories may result in different SAR values. SAR values may vary depending on national reporting and testing requirements and the network band. Additional SAR information may be provided under product information at www.nokia.com.

Your mobile device is also designed to meet the requirements for exposure to radio waves established by the Federal Communications Commission (USA) and Industry Canada. These requirements set a SAR limit of 1.6 W/kg averaged over one gram of tissue. The highest SAR value reported under this standard during product certification for use at the ear is 0.95 W/kg and when properly worn on the body is 1.28 W/kg.

Copyright and other notices

DECLARATION OF CONFORMITY

CE 0434 Ⓢ

134 Copyright and other notices

Hereby, NOKIA CORPORATION declares that this RM-626 product is in compliance with the essential requirements and other relevant provisions of Directive 1999/5/EC. A copy of the Declaration of Conformity can be found at http://www.nokia.com/phones/declaration_of_conformity/.

© 2010 Nokia. All rights reserved.

Nokia, Nokia Connecting People, Eseries, Nokia Original Accessories logo, and Ovi are trademarks or registered trademarks of Nokia Corporation. Nokia tune is a sound mark of Nokia Corporation. Other product and company names mentioned herein may be trademarks or tradenames of their respective owners.

Reproduction, transfer, distribution, or storage of part or all of the contents in this document in any form without the prior written permission of Nokia is prohibited. Nokia operates a policy of continuous development. Nokia reserves the right to make changes and improvements to any of the products described in this document without prior notice.

HDMI

HDMI and the HDMI Logo are trademarks or registered trademarks of HDMI Licensing LLC.

'Dolby' is a trademark of Dolby Laboratories.

Manufactured under license from Dolby Laboratories.



Java and all Java-based marks are trademarks or registered trademarks of Sun Microsystems, Inc.

This product is licensed under the MPEG-4 Visual Patent Portfolio License (i) for personal and noncommercial use in connection with information which has been encoded in compliance with the MPEG-4 Visual Standard by a consumer engaged in a personal and noncommercial activity and (ii) for use in connection with MPEG-4 video provided by a licensed video provider. No license is granted or shall be implied for any other use. Additional information, including that related to promotional, internal, and commercial uses, may be obtained from MPEG LA, LLC. See <http://www.mpegla.com>.

To the maximum extent permitted by applicable law, under no circumstances shall Nokia or any of its licensors be responsible for any loss of data or income or any special, incidental, consequential or indirect damages howsoever caused.

The contents of this document are provided "as is". Except as required by applicable law, no warranties of any kind, either express or implied, including, but not limited to, the implied warranties of merchantability and fitness for a particular purpose, are made in relation to the accuracy, reliability or contents of this document. Nokia reserves the right to revise this document or withdraw it at any time without prior notice.

Reverse engineering of software in the device is prohibited to the extent permitted by applicable law. Insofar as this user guide contains any limitations on Nokia's representations, warranties, damages and liabilities, such limitations shall likewise limit any representations, warranties, damages and liabilities of Nokia's licensors.

The availability of products, features, applications and services may vary by region. For more information, contact your Nokia dealer or your service provider. This device may contain commodities, technology or software subject to export laws and regulations from the US and other countries. Diversion contrary to law is prohibited.

Nokia does not provide a warranty for or take any responsibility for the functionality, content, or end-user support of third-party applications provided with your device. By using an application, you acknowledge that the application is provided as is. Nokia does not make any representations, provide a warranty, or take any responsibility for the functionality, content, or end-user support of third-party applications provided with your device.

FCC/INDUSTRY CANADA NOTICE

Your device may cause TV or radio interference (for example, when using a telephone in close proximity to receiving equipment). The FCC or Industry Canada can require you to stop using your telephone if such interference cannot be eliminated. If you require assistance, contact your local service facility. This device complies with part 15 of the FCC rules. Operation is subject to the following two conditions: (1) This device may not cause harmful interference, and (2) this device must accept any interference received, including interference that may cause undesired operation. Any changes or modifications not expressly approved by Nokia could void the user's authority to operate this equipment.

Some operations and features are SIM card and/or network dependent, MMS dependent, or dependent on the compatibility of devices and the content formats supported. Some services are subject to a separate charge.

/Issue 1 EN

Index

A

access codes	18
alarm clock	100
anniversary entries	104
antennas	14
applications	24, 39, 119, 121, 122
audio messages	56, 57

B

backing up data	74, 120
barring calls	49
battery	12, 130
— charging	13, 14
— saving power	33
birthday entries	104
blocking	
— device	114
blogs	63
Bluetooth	112, 113, 114
bookmarks	63
browser	
<i>See web browser</i>	
business cards	54, 113

C

cable connection	74, 115
cache memory	62
Calculator	107
calendar	67, 102, 103, 104, 105
calls	48
— conference	44
— diverting	48
— emergency	131
— internet calls	46, 47
— last dialled	47
— making	42, 43
— restricting	49, 50
— video calls	43

camera	68
— location information	68
— recording videos	70
— sending pictures	70
— sharing pictures	71
— sharing videos	71
— taking pictures	68, 69
charging the battery	13, 14, 130
chat services (IM)	109
clock	100, 101, 102
connectivity	117
contacts	52
— adding	52
— copying	17, 55, 124
— editing	52
— favourites	53
— groups	54, 55
— in social networks	65, 67
— pictures	53
— ringing tones	54
— saving	52, 53
— searching	42
— sending	54, 113
— synchronising	55, 122
— troubleshooting	127
— widgets	39
copying content	16, 17, 74, 79, 82, 115, 124
copyright protection	83

D

data connections	117
— Bluetooth	112
date and time	101
decrypting	125
device	
— rebooting	126
— setup	16, 17
— switching on/off	126
dictionary	108
diverting calls	48

downloads	39, 41	intranet	109
— themes	36		
DRM (digital rights management)	83		
E			
e-mail			
<i>See mail</i>			
emergency calls	131		
encrypting	125		
F			
factory settings, restoring	127		
favourites	53		
feeds, news	63		
file management	119, 120		
flashlight	11		
FM radio	83, 84, 85		
G			
GPS (global positioning system)	89		
H			
HDMI (high-definition multimedia interface)	9, 78		
headset	15		
help	19		
home screen	23, 36, 37, 38, 39, 62		
I			
icons	30		
IM (instant messaging)	109		
images			
<i>See pictures</i>			
IMEI number	18		
inbox, messages	57		
indicators	30, 127		
installing applications	121		
internet			
<i>See web browser</i>			
internet calls	46, 47		
internet connection	109		
J			
Java applications	121		
K			
key lock	10		
keyboard	8, 25, 26, 30		
keyguard	10		
keypad	28		
keys and parts	6, 7, 8		
L			
language settings	59		
licences	83		
local events and services	64		
location information	66, 68, 89, 105		
lock code	18, 124		
locking			
— device	124		
— keys	10		
— remotely	126		
— screen	10		
Log	48		
loudspeaker	10		
M			
mail	59, 60, 61		
— attachments	61		
— creating	61		
— mailbox	60		
— reading and replying to	60		
— sending	61		
— setup	60		
— widgets	62		
mailbox			
— voice	48		
Maps	85		
— browsing	86		
— changing views	88		
— Check in	94		

— compass	89
— display elements	87, 96
— downloading maps	88
— driving routes	95
— Favourites	92
— finding locations	90
— giving feedback	99
— location details	91
— navigating	95, 97
— organising places	92
— organising routes	92
— planning routes	98
— positioning	89
— reporting	99
— saving places	91
— saving routes	91
— sharing locations	93, 94
— synchronising	93
— traffic information	96
— viewing saved places	91
— viewing saved routes	91
— voice guidance	95
— walking routes	97
mass memory	120
meeting entries	102, 104
meeting requests	61
memory	119, 128
— clearing	121, 127
menus	39
message reader	58
messages	56, 57, 127
— audio	57
— conversations	58
— sending	56
MMS (multimedia message service)	56
movies	75
multimedia messages	56
multitasking	24
music	80, 82
— playlists	81
My Card	54

N

news feeds	63
Nokia account	16
Nokia Ovi Suite	19
Nokia support information	126
Notes	108
notification light	32

O

office applications	105, 106, 107
Office Communicator	109
offline profile	32
Ovi account	
<i>See Nokia account</i>	
Ovi by Nokia	55
Ovi Mail	60
Ovi Music	83
Ovi Store	39
— browsing	40
— buying	41
— downloads	41
— reviews	42
— searching	40
Ovi Suite	
<i>See Nokia Ovi Suite</i>	
Ovi Sync	123

P

personalising your device	35, 36, 37, 38
Phone switch	17, 124
phonebook	
<i>See contacts</i>	
Photo editor	74
photographs	
<i>See pictures</i>	
pictures	74
— copying	17, 74, 115, 124
— editing	74
— location information	68
— organising	73
— printing	76

— sending	70, 113
— sharing	66, 71, 74
— taking	68, 69
— viewing	71, 72
— viewing on a TV	76
PIN codes	18
playlists	81
positioning information	66, 89
powering on/off	15, 126
printing	76
profiles	34, 35
— creating	35
— offline	32
— personalising	35
PUK codes	18

Q

Quickoffice	105, 106, 107
-------------	---------------

R

radio	83, 84, 85
RDS (radio data system)	83, 85
rebooting	126
recording	
— calls	47
— sounds	83
— videos	70
recycling	128
remote drives	117
remote lock	124
remote locking	126
restoring settings	127
ringing tones	34, 54
ringtones	35, 47

S

searching	32
— contacts	42
— radio stations	84
security code	18, 124
sensor settings	47

settings	
— access points	109
— language	59
— restoring	127
sharing, online	66, 71, 74
shortcuts	23, 30, 38, 39
silent profile	35
SIM card	55
— inserting	11
— removing	11
slide show	75
SMS (short message service)	56
social networks	64, 65, 66, 67
software	121
software updates	118, 119
speakerphone	10
speed dialling	45
status updates	66
support	19, 126
switching on/off	15, 126
synchronisation	55, 122, 123

T

tasks	103
text input	8, 25, 26, 27, 28, 29
text messages	56
themes	36
time and date	101
tones	
— personalising	35
touch screen	21, 26, 28
transferring content	17, 74, 79, 82, 115, 124
troubleshooting	64, 128
turning on/off	15, 126
TV	
— viewing pictures and videos on	76
— watching programmes	80

U

updates	
— applications	118, 119
— device software	118, 119
USB connection	9, 74, 115, 116
user guide	19

V

video calls	43
videos	79
— copying	17, 74, 79, 115, 124
— editing	75
— location information	68
— playing	79
— recording	69, 70
— sending	70, 113
— sharing	50, 51, 66, 71, 74
— watching	71, 72
— watching on a TV	76, 78
virtual keyboard	26
virtual keypad	28
voice calls	
See <i>calls</i>	
voice commands	45
volume control	10
VPN (virtual private network)	116

W

wallpaper	37
web browser	62, 64, 128
— bookmarks	63, 64
— browsing pages	62
— cache memory	62
— intranet	109
web connection	109
web feeds	63
widgets	38, 39, 62, 80
WLAN (wireless local area network)	110, 111
world clock	101, 102

Z

zip files	109
-----------	-----