

Nokia X7 User Guide

DRAFT

Issue FCC Review

RM-659 03 Aug 2010

Contents

Safety	5	Organise your applications.....	26
Getting started	6	Explore Ovi services	26
Keys and parts.....	6	Visit Ovi by Nokia.....	26
Antenna locations.....	8	Nokia account and Ovi services.....	27
Headset.....	9	About Ovi Contacts.....	27
Change the volume of a call, song, or video.....	9	About Ovi Files.....	27
Lock or unlock the keys and screen.....	9	About Ovi Mail.....	28
Insert or remove the SIM card.....	9	About Nokia's Ovi Maps.....	28
Insert or remove the memory card.....	11	About Ovi Music.....	28
Charging.....	12	About Ovi Store.....	28
If your device stops responding.....	14	Personalise your device	29
Switch the device on or off.....	14	Profiles.....	29
Nokia account and Ovi services.....	15	Change your theme.....	30
Copy contacts or pictures from your old device.....	15	Set up the home screen.....	30
Device set-up.....	16	Organise your applications.....	32
Use the in-device user guide.....	16	Telephone	33
Install Nokia Ovi Suite on your PC	17	Use your T-coil hearing aid with your device.....	33
Touch screen actions	18	Connect to a TTY device.....	33
Interactive home screen elements	20	Call a phone number.....	33
Call a phone number	20	Search for a contact.....	34
View your missed calls	21	Call a contact.....	34
Save phone numbers and mail addresses	21	Make a conference call.....	34
Send a message	22	Use speed dial.....	35
Personalisation	22	Use your voice to call a contact.....	35
Profiles.....	22	Make calls over the internet.....	36
Change your theme.....	23	Call the last dialled number.....	37
Home screen.....	24	Record a phone conversation.....	37
		Turn to silence.....	38
		View your missed calls.....	38
		Call your voice mailbox.....	38
		Divert calls to your voice mailbox or another phone number.....	39
		Prevent making or receiving calls.....	39
		Allow calls only to certain numbers.....	40
		Video sharing.....	40
		Messaging	42

About Messaging.....	42	Protected content.....	59
Send a message.....	43	Record sounds.....	59
Send an audio message.....	43	Play music through a radio.....	60
Receive messages.....	44	FM radio.....	61
View a conversation.....	44	Maps.....63	
Listen to a text message.....	45	Maps overview.....	63
Change language.....	45	My position.....	63
Chat.....	45	Find places.....	67
Mail.....46		Favourites.....	68
Mail.....	46	Drive and Walk.....	70
About Nokia Messaging.....	48	Time management.....74	
Open mail from the home screen.....	48	Clock.....	74
Internet.....48		Calendar.....	76
About Internet.....	48	Office.....78	
Browse the web.....	49	Quickoffice.....	78
Add a bookmark.....	49	Read PDF documents.....	79
Subscribe to a web feed.....	49	Make a calculation.....	79
Camera.....50		Write notes.....	80
About Camera.....	50	Translate words from one language to another.....	80
Take a picture.....	50	Open or create zip files.....	81
Save location information to your pictures and videos.....	51	Connecting your device.....81	
Take a close-up picture.....	51	Internet connections.....	81
Take a picture in the dark.....	52	Wireless LAN.....	82
Take a picture of a moving object.....	52	Bluetooth.....	83
Picture tips.....	52	USB data cable.....	85
Record a video.....	52	Close a network connection.....	87
Send a picture.....	53	Mange your device.....87	
Your pictures and videos.....53		Keep your device software and applications up to date.....	87
About Photos.....	53	Manage files.....	89
View pictures and videos.....	53	Increase available memory for more content.....	90
Edit the pictures you have taken.....	54	Manage applications.....	91
Video editor.....	54	Synchronise content.....	92
Print a picture you have taken.....	55	Copy contacts or pictures between devices.....	92
Videos and TV.....56		Protect your device.....	93
Videos.....	56	Find more help.....94	
Watch Web TV.....	57		
Listen to music.....57			
Music player.....	57		

Contents

Support.....	94
Accessibility solutions.....	95

Troubleshooting.....95

If your device stops responding.....	95
Restore original settings.....	95
What to do when the memory is full?.....	95
Message indicator blinking.....	96
A contact appears twice in the contacts list.....	96
Unreadable characters while browsing the web.....	96
Prepare your device for recycling.....	96

Green tips.....97

Save energy.....	97
Recycle.....	97

Product and safety information.....98

Index.....	109
------------	-----

DRAFT

Safety

Read these simple guidelines. Not following them may be dangerous or illegal. Read the complete user guide for further information.



SWITCH OFF IN RESTRICTED AREAS

Switch the device off when mobile phone use is not allowed or when it may cause interference or danger, for example, in aircraft, near medical equipment, fuel, chemicals, or blasting areas.



ROAD SAFETY COMES FIRST

Obey all local laws. Always keep your hands free to operate the vehicle while driving. Your first consideration while driving should be road safety.



INTERFERENCE

All wireless devices may be susceptible to interference, which could affect performance.



QUALIFIED SERVICE

Only qualified personnel may install or repair this product.



CHARGERS AND OTHER ACCESSORIES

Use only chargers and other accessories approved by Nokia for use with this device. Do not connect incompatible products.



KEEP YOUR DEVICE DRY

Your device is not water-resistant. Keep it dry.



GLASS PARTS

The front cover of the device is made of glass. This glass can break if the device is dropped on a hard surface or receives a substantial impact. If the glass breaks, do not touch the glass parts of the device or attempt to remove the broken glass from the device. Stop using the device until the glass is replaced by qualified service personnel.



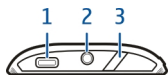
PROTECT YOUR HEARING


Listen to a headset at a moderate level, and do not hold the device near your ear when the loudspeaker is in use.

Getting started

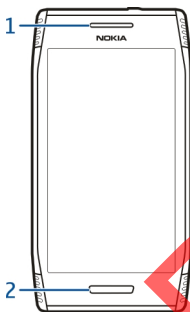
Keys and parts

View keys and parts on top of device



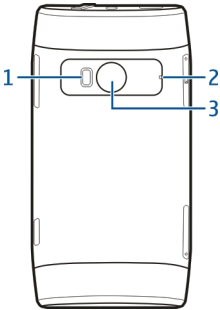
- 1 — Micro USB connector
- 2 — Universal Jack connector (3.5 mm)
- 3 — Power /Unlock/Lock key

Front



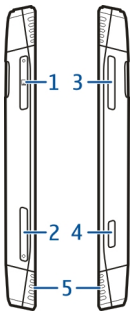
- 1 — Earpiece
- 2 — Menu key


Back



- 1 — Camera flash
- 2 — Camera lens
- 3 — Microphone

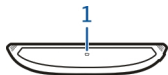
Sides



- 1 — Memory card slot
- 2 — SIM card slot
- 3 — Volume/Zoom key
- 4 — Camera key 
- 5 — Loudspeaker

DRAFT

Bottom



1 — Microphone

Touch screen

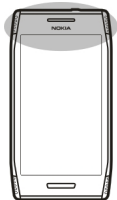
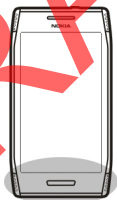
To control your device, lightly touch the screen with your fingertips. The screen does not respond when you use your fingernails.

If your fingertips are cold, the screen may not respond to your touch.

To avoid scratching the touch screen, never use a pen, pencil, or other sharp object to write on the touch screen.

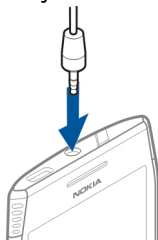
Antenna locations

Avoid touching the antenna area unnecessarily while the antenna is transmitting or receiving. Contact with antennas affects the communication quality and may cause a higher power level during operation and may reduce the battery life.



Headset

You can connect a compatible headset or compatible headphones to your device.



Change the volume of a call, song, or video

Use the volume keys.

The built-in loudspeaker allows you to speak and listen from a short distance without having to hold the device to your ear.

Activate or deactivate the loudspeaker during a call — Select **Loudspeaker** or **Activate handset**.

Lock or unlock the keys and screen

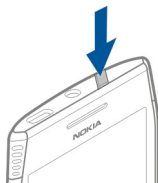
To avoid accidentally making a call when your device is in your pocket or bag, lock the keys and screen of your device.

To lock the keys and screen, quickly tap the power button.

To unlock the keys and screen, select the **Menu** key and **Unlock**.

Set the keys and screen to lock automatically

1. Select **Menu** > **Settings and Phone** > **Display** > **Screen/keylock time-out**.
2. Define the length of time after which the keys and screen are locked automatically.



Insert or remove the SIM card

Do not attach any stickers to your SIM card.

Getting started

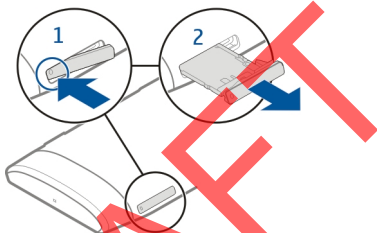


1 — Memory card slot cover

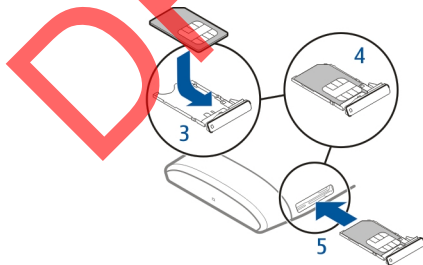
2 — SIM card slot cover

Insert the SIM card

1. Use your finger to press open the cover of the SIM card slot.
2. Grab the tray to slide out the card slot.

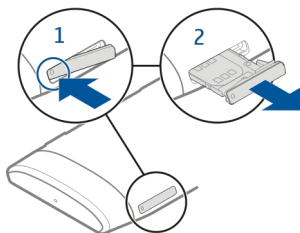


3. Slide the SIM card into the tray.
4. Make sure the contact area of the SIM card is facing the back of the device and lays snugly in the tray.
5. Slide the tray into the device.



Remove the SIM card

1. Use your finger to press open the cover of the SIM card slot.
2. Grab the tray to slide out the card slot and remove the card.



Insert or remove the memory card

Use only compatible memory cards approved by Nokia for use with this device. Incompatible cards may damage the card and the device and corrupt data stored on the card.

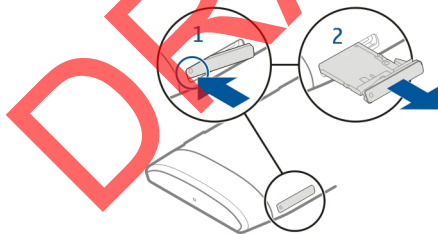
Memory cards are sold separately.

Do not attach any stickers to your memory card.

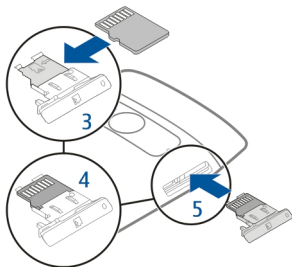


Insert the memory card

1. Use your finger to press open the cover of the memory card slot.
2. Grab the tray to slide out the card slot.

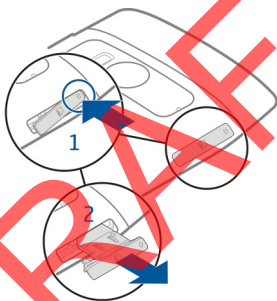


3. Slide the memory card sideways into the tray.
Make sure the contact area of the memory card is facing the back of the device.
4. Push the card in, until you hear a click.
5. Slide the tray into the device.



Remove the memory card

1. Use your finger to press open the cover of the memory card slot.
2. Grab the tray to slide out the card slot and remove the card.



Charging

About the battery

Your device has an internal, nonremovable, CTIA 1725-certified rechargeable battery. Use only Nokia approved chargers designated for this device. You can also use a compatible USB data cable to charge your device.

Do not attempt to remove the battery from the device. Take the device to the nearest authorised service facility for replacement of the battery.

You can use USB charging when a wall outlet is not available. Data can be transferred while charging the device. The efficiency of USB charging power varies significantly, and it may take a long time for charging to start and the device to start functioning.

Only connect your device to products that have a USB-IF logo or have completed the USB-IF compliance program.

Authorised retail points may also offer a battery replacement service.

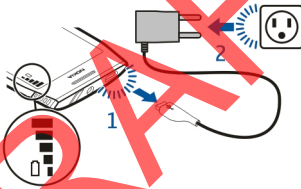
When your device is low on power, it goes into power save mode. To deactivate power save mode, press **ⓘ**, and select **Deactivate power saving**. When power save mode is activated, you may not be able to modify the settings of certain applications.

Charge the battery

Your battery has been partially charged at the factory, but you may need to recharge it before you can switch on your device for the first time.

If the device indicates a low charge, do the following:

1. Connect the charger to the device.
2. Connect the charger to the power supply.



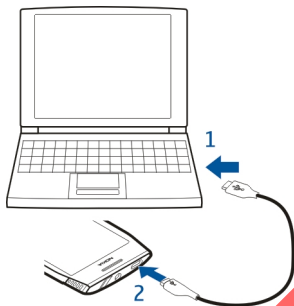
You do not need to charge the battery for a specific length of time, and you can use the device while it is charging.

If the battery is completely discharged, it may take several minutes before the charging indicator appears on the display or before any calls can be made.

If the battery has not been used for a long time, to begin charging, you may need to connect the charger, then disconnect and reconnect it.



Tip: You can also use a compatible USB charger to charge your battery.



Charge the battery over USB

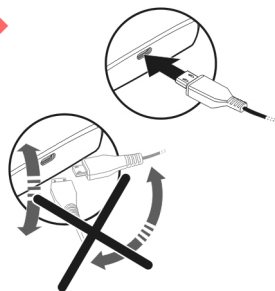
Battery low, but you don't have a charger with you? You can use a compatible USB cable to connect to a compatible device, such as a computer.

To avoid breaking the charger connector, be careful when connecting or disconnecting the charger cable.

If connected to a computer, you can synchronise your device while charging.

Charging over USB can take longer to start, and may not work if you connect through a non-powered USB hub. Your device charges more quickly when connected to a wall outlet.

When the battery is charging, the charging indicator light next to the USB connector is lit. When the battery charge is low, the charging indicator light flashes. It may take a while for charging to start.



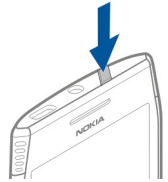
If your device stops responding

Restart your device. Press and hold **⏻** for about 8 seconds. The device vibrates three times and switches off. To switch your device on again, press **⏻**.

No content is deleted when you restart your device.

Switch the device on or off

Press and hold **⏻**.



Nokia account and Ovi services

When you switch on your device for the first time, you are prompted to create or sign on to a Nokia account, so you can access Ovi services.

With Ovi services, you can:

- See status updates from social networking services
- Download mobile games, applications, videos, pictures, themes, and ringing tones from Ovi Store
- Synchronise your favourite locations from your device to the Ovi Maps internet service

To learn more about Ovi services, go to www.ovi.com.

To create a Nokia account later, use your device to access an Ovi service, and you are prompted to create an account.

Copy contacts or pictures from your old device

Want to copy important information from your previous compatible Nokia device and start using your new device quickly? Use the Phone switch application to copy, for example, contacts, calendar entries, and pictures to your new device, free of charge.

Select **Menu** > **Applications** > **Tools** > **Phone setup and Data transfer**.

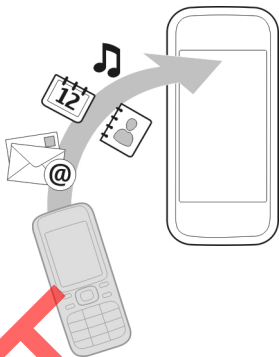
Getting started

If your old Nokia device does not have the Phone switch application, your new device sends it in a message. Open the message in the old device, and follow the instructions.


1. Select the device you want to connect to, and pair the devices. Bluetooth needs to be activated.
2. If the other device requires a passcode, enter the passcode. The passcode, which you can define yourself, must be entered in both devices. The passcode in some devices is fixed. For details, see the user guide of the device.

The passcode is valid only for the current connection.

3. Select the content and **OK**.



Device set-up

To define some basic settings for your device, select the Phone set-up widget  which is on one of your home screens. To switch between home screens, swipe left or right. With the Phone set-up widget, you can do the following:

- Copy contacts, pictures, and other content from your previous Nokia device
- Personalise your device, by changing the ringing tone and visual theme
- Set up mail
- Update your device software

To define the settings later, you can also select **Menu > Applications > Tools > Phone setup**.



Use the in-device user guide

Select **Menu > Applications > User guide**.

Open the user guide from an application — Select **Options > User guide**. This is not available for every application.

Search the user guide — When the user guide is open, select **Options > Search**, and enter a letter or a word in the search field.

Switch between the user guide and an application — Press and hold the menu key, swipe left or right, and select the desired application.

Links to related topics may be at the end of instructions.  indicates a link to a related topic, and  indicates a link to a web page.


Install Nokia Ovi Suite on your PC

With the Nokia Ovi Suite PC application, you can manage content on your device, and keep it in sync with your computer. You can also update your device with the latest software, and download maps.

Download the latest version of Nokia Ovi Suite from www.ovi.com/suite.

If you cannot connect to the internet, to install Ovi Suite and Nokia Ovi Player from your device:

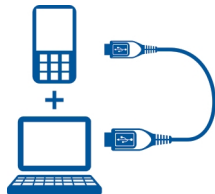
1. Use a compatible USB data cable to connect your device to your computer.

If you are using Windows XP or Windows Vista on your computer, set the USB mode of your device to **Mass storage**. On your device, select the notification area in the top right corner, and select  > **USB** > **Mass storage**.


Your memory card appears as a removable disk on your PC.

2. On your computer, select **Install Nokia Ovi Suite**.

If the installation window does not open automatically, open the installation file manually. Select **Open folder to view files**, and double-click **Install_Nokia_Ovi_Suite.exe**.



Touch screen actions

3. Follow the instructions.
4. When the installation is complete, if you are using Windows XP or Windows Vista on your computer, set the USB mode of your device to **Media transfer**. On your device, select the notification area in the top right corner, and select  > **USB** > **Media transfer**.



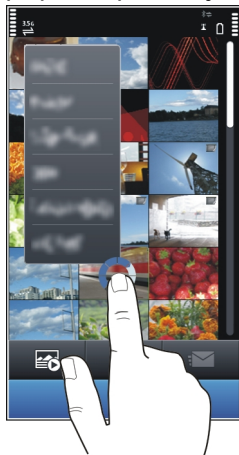
To learn more about Ovi Suite, go to www.ovi.com.

Touch screen actions

To interact with the user interface, tap or tap and hold the touch screen.

Open an application or other screen element — Tap the application or element.

Access functions quickly — Tap and hold the item. A pop-up menu with available options opens. For example, to send an image or delete an alarm, tap and hold the image or alarm, and from the pop-up menu, select the appropriate option. If you



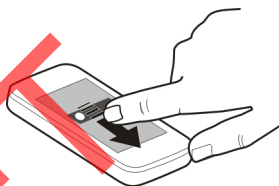
tap and hold the home screen, editing mode is activated.

Drag an item — Tap and hold the item, and slide your finger across the screen. The item follows your finger. You can drag items in the home screen or the main menu, when you have activated editing mode.

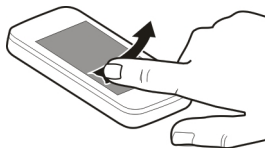


Swipe — Place a finger on the screen, and steadily slide your finger in the desired direction. For example, when you are viewing a picture, to view the next picture, swipe left.

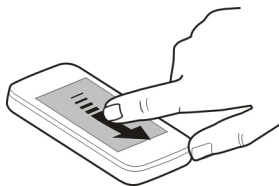
Scroll in a list or menu — If the list has a scroll bar, drag the scroll bar slider. Or place your finger on the screen, slide it quickly up or down the screen, then lift your finger. The content of the screen scrolls with the speed and direction it had at the moment of release. To select an item from a scrolling list and to stop the movement, tap the item.



Zoom in — Place two fingers on an item, such as a picture or web page, and slide your fingers apart.

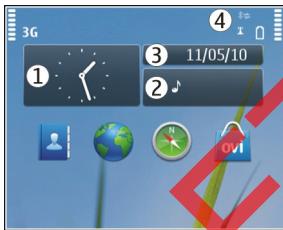


Zoom out — Place two fingers on the item, and slide your fingers together.



Interactive home screen elements

The home screen elements are interactive. For example, you can change the date and time, set alarms, write calendar entries, or edit the profiles directly in the home screen.



Set an alarm — Select the clock (1).

Activate or edit profiles — Select the profile (2).

View or edit your schedule — Select the date (3).

View available WLANs or missed events — Select the notification area (4).

Modify the connectivity settings — Select the notification area (4) and ⇄.



In most other views, you can select the notification area (4), and do the following:

- Modify the connectivity settings.
- Open the **Clock** application, and set an alarm.
- View the battery status, and activate power saving mode.
- View notifications of missed calls or received messages.
- Open the WLAN wizard, and connect to a WLAN.

Call a phone number

1. In the home screen, select **Call** to open the dialler, and enter the phone number.



To enter the + character, used for international calls, select * twice. The + character as a replacement for the international access code may not work in all regions. In this case, enter the international access code directly.

2. To make the call, select .
3. To end the call, select .

View your missed calls

In the home screen, you can see when you have missed calls. To view the phone number, select **Show**. The caller's name is displayed if stored in the contacts list. Missed and received calls are logged only if supported by the network, and the device is switched on and within the network service area.

Call back the contact or number — Select the contact or number.

To view the missed calls list later, in the home screen, select **Call** to open the dialler, select , and open the missed calls tab .


 **Tip:** To view missed calls quickly, in the home screen, select , and open the missed calls tab .

Save phone numbers and mail addresses


You can save your friends' phone numbers, mail addresses, and other information to your contacts list.

Select **Menu** > **Addr. Book**.

Add a contact to the contacts list

1. Select **Options** > **New contact**.
2. Select a field, and enter the details. To close the text input, select .

Edit contact information

1. Select a contact.
2. Open the contact card tab .
3. Select a contact detail.



Send a message

Add details about a contact — Select a contact and **Options** > **Edit** > **Options** > **Add detail**.

Send a message

With text and multimedia messages, you can quickly contact your friends and family. In a multimedia message, you can attach pictures, videos, and sound clips that you want to share.

Select **Menu** > **Messaging**.

1. Select **New message**.
2. To select recipients from the contacts list, select the **To** title. To enter the recipient's phone number manually, enter the number in the **To** field.
3. To add an attachment, select .
4. Select .

Sending a message with an attachment may be more expensive than sending a normal text message. For more information, contact your service provider.

If the item you inserted in a multimedia message is too large for the network, the device may automatically reduce the size.

Only compatible devices can receive and display multimedia messages. Messages may look different in different devices.

Personalisation

Profiles

About profiles

 Select **Menu** > **Settings and Profiles**.

Waiting for a call but can't let your phone ring? Your device has various settings groups called profiles, which you can personalise for different events and environments. You can also create your own profiles.

You can personalise the profiles in the following ways:

- Change the ringing and message alert tones.
- Adjust the volume of ringing and key tones.

- Mute key tones and warning tones.
- Activate vibrating alerts.
- Set the device to say the name of the contact who is calling.

Personalise your tones

You can personalise the ringing, key, and warning tones for each profile.

1. In the home screen, select the profile.
2. Select **Edit active profile**.
3. Select **Ring tone** or **Key tones**.

Silence your device

When the silent profile is activated, all ringing and alert tones are muted. Activate this profile when you are at the cinema or in a meeting.

In the home screen, select the profile and **Vibrate**.

Change your profile for meetings or outdoor use

When the meeting profile is activated, your device discreetly beeps once instead of ringing. When the outdoor profile is activated, the ringing tone is louder, so you won't miss a call in a noisy environment.


In the home screen, select the profile and **Meeting** or **Outdoor**.

Create a new profile

How can you make your device meet your needs at work or college or home? You can create new profiles for different situations, and give them appropriate names.

1. Select **Menu** > **Settings** > **Profiles and Options** > **Create new**.
2. Define your profile settings, and select **Profile name**.
3. Enter a name for the profile.

Change your theme

 With themes, you can change the colours and look of your display.

Select **Menu** > **Settings** > **Themes**.

Select **General** and a theme.

Personalisation

Some themes include background animation effects. To save battery power, select **General > Options > Theme effects**.

Home screen

About the home screen

In the home screen, you can quickly access your most frequently used applications and create shortcuts for different features. You can view your favourite contacts, and quickly call, start conversations, or send messages to them. You can also control applications, such as Music.

You can have more than one home screen page, for example, separate home screens for work and private life.

The home screen elements are interactive. For example, if you select the clock, the **Clock** application opens.

Switch between home screens

You can have more than one home screen. For example, create separate home screens for work and private life, and personalise them to have different content.

To switch to another home screen, swipe left or right.

●●● indicates which home screen you are in.



Personalise the home screen

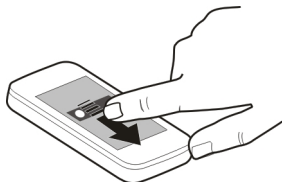
Want to see your favourite landscape or pictures of your family in the home screen background? You can change this wallpaper, and rearrange items in the home screen, to personalise it to your liking.

Rearrange items in the home screen

1. Tap and hold the home screen.
2. Drag and drop items to a new location.

Change the wallpaper

1. Tap and hold the home screen.
2. Select **Options** > **Change wallpaper**.
3. Select the desired picture.



Add items to the home screen

Want to open your favourite applications directly from the home screen? You can create shortcuts to your most used features. You can also add mini-applications (widgets), that display helpful information, such as the current weather conditions.

Add a shortcut to the home screen

You can add shortcuts to applications, web bookmarks, or actions, such as writing a message.

1. Tap and hold the home screen.
2. Select the shortcut widget and **Settings**.
3. Select the shortcut you want to define, and select **#Application** or **#Bookmark** and the desired item.



Tip: To remove a shortcut, replace it with another one.

Add a widget to the home screen

1. Tap and hold the home screen.
2. Select **+** and the desired widget from the list.

Using the service or downloading content may cause transfer of large amounts of data, which may result in data traffic costs.

Remove a widget from the home screen

1. Tap and hold the home screen.
2. Select the widget, and from the pop-up menu, select **Remove**.

Add your important contacts to the home screen


Add your most important contacts to the home screen, so you can quickly call or send messages to them.

1. In the Favourite contacts widget, select .

Explore Ovi services

2. To mark the contacts to add to the home screen, select the desired contacts. You can add up to 20 contacts to the widget.

Call or send a message to a contact — In the widget, select the contact.

Remove a contact from the home screen — In the widget, select  and the contact to remove. The contact is deleted from the widget, but remains in your contacts list.


Organise your applications

Want to open your most used applications more quickly? In the main menu, you can organise your applications and hide less used applications in folders.

Press the menu key, and select **Options > Organize**.


Create a new folder — Select **Options > New folder**.

Move an application to a folder — Select and hold the application, and from the pop-up menu, select **Move to folder** and the new folder.

 **Tip:** You can also drag and drop applications and folders.

Explore Ovi services

Visit Ovi by Nokia

 With Ovi by Nokia, you can find new places and services, and stay in touch with your friends. You can do, for example, the following:

- Create a mail account
- Plan trips and view locations on a map
- Download games, applications, videos, and ringing tones to your device
- Purchase music

Some downloadable items are free of charge, others you may need to pay for.

The available services may vary by country or region, and not all languages are supported.

To access Nokia's Ovi services, go to www.ovi.com, and register your own Nokia account.

For more information, go to www.ovi.com/support.

Nokia account and Ovi services

When you switch on your device for the first time, you are prompted to create or sign on to a Nokia account, so you can access Ovi services.


With Ovi services, you can:

- See status updates from social networking services
- Download mobile games, applications, videos, pictures, themes, and ringing tones from Ovi Store
- Synchronise your favourite locations from your device to the Ovi Maps internet service

To learn more about Ovi services, go to www.ovi.com.

To create a Nokia account later, use your device to access an Ovi service, and you are prompted to create an account.


About Ovi Contacts

 With Ovi Contacts, you can stay connected to your friends and family, follow what they are up to, and discover new friends in the Ovi community. You can also back up contacts from your device to Ovi.

Additionally, you can share your location with your friends.


To use Ovi Contacts, go to www.ovi.com.

About Ovi Files


 You can save files on your computer, and access them later with your device using Ovi Files even when your computer is switched off. Just select which folders and files you want to be available, and Ovi Files automatically keeps an up-to-date copy stored in a protected online storage. You can also transfer music from your computer to your device, and send files and folders from your computer without transferring them to your device first.

To learn more about Ovi Files, go to www.ovi.com.

About Ovi Mail

 With Ovi Mail, you can read and send messages from your mobile device or computer. The anti-spam protection helps keep your mailbox in order, and the virus protection increases security.

About Nokia's Ovi Maps


 With Nokia's Ovi Maps internet service, you can view places from around the world on your computer.

When you are, for example, planning a trip, you can do the following:

- Search for addresses, places of interest, and services
- View place details, such as weather, if available
- Save your favourite places to your Nokia account, and organise them into collections
- Synchronise your saved items with your mobile device, and access them on the go, if your device has the Maps application installed


To use Ovi Maps, go to www.ovi.com.

About Ovi Music

 With Ovi Music, you can purchase and download songs to your device and your computer, and copy the songs between the two. To manage your music collection and downloads, you can install Ovi Player on your compatible PC, or use your internet browser to download music.

To start discovering music, select **Menu > Music > Options > Go to Music store** or go to www.ovi.com.

About Ovi Store

 With Ovi Store, you can download mobile games, applications, videos, pictures, themes, and ringing tones to your device. Some items are free of charge; others you need to pay for with your credit card or in your phone bill. The availability of payment methods depends on your country of residence and your network service provider. Ovi Store offers content that is compatible with your mobile device and relevant to your tastes and location.

Personalise your device

Profiles

About profiles

 Select Menu > Settings and Profiles.

Waiting for a call but can't let your phone ring? Your device has various settings groups called profiles, which you can personalise for different events and environments. You can also create your own profiles.

You can personalise the profiles in the following ways:

- Change the ringing and message alert tones.
- Adjust the volume of ringing and key tones.
- Mute key tones and warning tones.
- Activate vibrating alerts.
- Set the device to say the name of the contact who is calling.

Personalise your tones

You can personalise the ringing, key, and warning tones for each profile.

1. In the home screen, select the profile.
2. Select **Edit active profile**.
3. Select **Ring tone** or **Key tones**.

Silence your device

When the silent profile is activated, all ringing and alert tones are muted. Activate this profile when you are at the cinema or in a meeting.

In the home screen, select the profile and **Vibrate**.

Change your profile for meetings or outdoor use

When the meeting profile is activated, your device discreetly beeps once instead of ringing. When the outdoor profile is activated, the ringing tone is louder, so you won't miss a call in a noisy environment.

Personalise your device


In the home screen, select the profile and **Meeting** or **Outdoor**.

Create a new profile

How can you make your device meet your needs at work or college or home? You can create new profiles for different situations, and give them appropriate names.

1. Select **Menu** > **Settings** > **Profiles and Options** > **Create new**.
2. Define your profile settings, and select **Profile name**.
3. Enter a name for the profile.

Change your theme

 With themes, you can change the colours and look of your display.

Select **Menu** > **Settings** > **Themes**.

Select **General** and a theme.

Some themes include background animation effects. To save battery power, select **General** > **Options** > **Theme effects**.

Set up the home screen

About the home screen

In the home screen, you can quickly access your most frequently used applications and create shortcuts for different features. You can view your favourite contacts, and quickly call, start conversations, or send messages to them. You can also control applications, such as Music.

You can have more than one home screen page, for example, separate home screens for work and private life.

The home screen elements are interactive. For example, if you select the clock, the **Clock** application opens.

Switch between home screens

You can have more than one home screen. For example, create separate home screens for work and private life, and personalise them to have different content.

To switch to another home screen, swipe left or right.

●●● indicates which home screen you are in.



Personalise the home screen

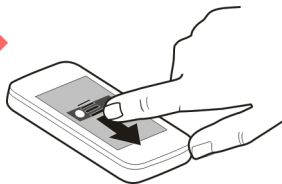
Want to see your favourite landscape or pictures of your family in the home screen background? You can change this wallpaper, and rearrange items in the home screen, to personalise it to your liking.

Rearrange items in the home screen

1. Tap and hold the home screen.
2. Drag and drop items to a new location.

Change the wallpaper

1. Tap and hold the home screen.
2. Select **Options** > **Change wallpaper**.
3. Select the desired picture.



Add items to the home screen

Want to open your favourite applications directly from the home screen? You can create shortcuts to your most used features. You can also add mini-applications (widgets), that display helpful information, such as the current weather conditions.

Add a shortcut to the home screen

You can add shortcuts to applications, web bookmarks, or actions, such as writing a message.


1. Tap and hold the home screen.
2. Select the shortcut widget and **Settings**.
3. Select the shortcut you want to define, and select **#Application** or **#Bookmark** and the desired item.

Personalise your device



Tip: To remove a shortcut, replace it with another one.

Add a widget to the home screen

1. Tap and hold the home screen.
2. Select  and the desired widget from the list.


Using the service or downloading content may cause transfer of large amounts of data, which may result in data traffic costs.

Remove a widget from the home screen


1. Tap and hold the home screen.
2. Select the widget, and from the pop-up menu, select **Remove**.

Add your important contacts to the home screen

Add your most important contacts to the home screen, so you can quickly call or send messages to them.

1. In the Favourite contacts widget, select .
2. To mark the contacts to add to the home screen, select the desired contacts. You can add up to 20 contacts to the widget.

Call or send a message to a contact — In the widget, select the contact.

Remove a contact from the home screen — In the widget, select  and the contact to remove. The contact is deleted from the widget, but remains in your contacts list.

Organise your applications

Want to open your most used applications more quickly? In the main menu, you can organise your applications and hide less used applications in folders.

Press the menu key, and select **Options** > **Organize**.

Create a new folder — Select **Options** > **New folder**.

Move an application to a folder — Select and hold the application, and from the pop-up menu, select **Move to folder** and the new folder.



Tip: You can also drag and drop applications and folders.

Telephone

Use your T-coil hearing aid with your device

If you have a telecoil-equipped hearing aid, you may be able to use your hearing aid with your device, to get clearer sound during a call.

1. Switch your telecoil-equipped hearing aid to T mode.
2. On your device, select **Menu > Settings and Phone > Accessories > T-coil hearing aid mode**.

A telecoil cannot be used when the offline profile is activated in your device, when a headset or other audio accessory is connected to your device, or when you are using the loudspeaker on your device.

For more information about accessibility, go to www.nokiaaccessibility.com.

Connect to a TTY device

Your phone uses a third-party phone adapter to connect to a TTY device. Contact your service provider for more information.

1. Connect the phone adapter to the headset connector on your phone.
2. Select **Menu > Phone > Accessories and TTY**.

If the phone adapter is not connected, the Text phone menu will not display. The TTY icon is displayed on the Home screen when the phone adapter is connected.

3. Connect the TTY device cable to the phone adapter.

The TTY device cable is supplied with the TTY machine by the TTY manufacturer.





Tip: You must connect the phone adapter to the phone before connecting the TTY device cable to the adapter. If you connect the phone adapter to the TTY device cable, and then to your phone, the accessory is not recognized.

Call a phone number

1. In the home screen, select **Call** to open the dialler, and enter the phone number.

Telephone

To enter the + character, used for international calls, select * twice. The + character as a replacement for the international access code may not work in all regions. In this case, enter the international access code directly.

2. To make the call, select .
3. To end the call, select .

Search for a contact

In the home screen, select **Call**, and start entering the contact's first or second name. When entering the characters, select each number key once for each letter. For example, to search for Nokia, enter **6, 6, 5, 4, and 2**.

Call the found contact — Select and hold the contact, and in the contact card, select **Voice call**.

Send a message to the contact — Select and hold the contact, and in the contact card, select **Message**.

Deactivate contact search — Select **Options** > **Contact search** > **Off**.


Call a contact

1. Select **Menu** > **Addr. Book**.
2. Select a contact, and in the **contact card**, select **Voice call**.




To search for a **contact**, enter the first letters or characters of the first or second name in the **search field**.

Make a conference call

Your device supports conference calls (network service) between a maximum of six participants, including yourself. Video conference calls are not supported.

1. Make a call to the first participant.
2. To make a call to another participant, select **Options** > **New call**. The first call is put on hold.
3. When the new call is answered, to add the first participant to the conference call, select .

Add a new participant to a conference call — Make a call to another participant, and add the new call to the conference call.

Have a private conversation with a conference call participant — Select . Go to the participant, and select . The conference call is put on hold on your device. The other participants continue the conference call. To return to the conference call, select .

Drop a participant from a conference call — Select , go to the participant, and select .

End an active conference call — Press the end key.

Use speed dial

You can quickly call your friends and family when you assign your most-used phone numbers to the number keys of your device.

Select **Menu** > **Settings** and **Calling** > **Speed dialing**.

Assign a phone number to a number key

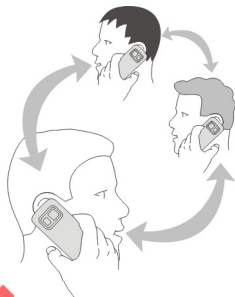
1. Select the number key to which you want to assign the phone number.
1 is reserved for the voice mailbox.
2. Select the phone number from your contacts list.

Remove or change a phone number assigned to a number key — Select and hold the assigned key, and from the pop-up menu, select **Remove** or **Change**.

Make a call — In the home screen, select **Call** to open the dialler, and select and hold the assigned number key.

Use your voice to call a contact

With the Voice commands application, you say commands to make calls or control your device.



Telephone

Voice commands are not dependent on the speaker's voice. Commands are automatically created by your device.



Note: Using voice tags may be difficult in a noisy environment or during an emergency, so you should not rely solely upon voice dialling in all circumstances.

When you use voice dialling, the loudspeaker is in use. Hold the device at a short distance away when you say the voice command.

1. In the home screen, select and hold **Call**. If a compatible headset with the headset key is attached, press and hold the headset key.
2. A short tone sounds, and **Speak now** is displayed. Clearly say the contact name.
3. The device repeats the contact's name; and displays the name and number. To cancel the voice dialling, select **Quit**.

Listen to a voice command for a contact

1. Select a contact and **Options** > **Voice tag details**.
2. Select a contact detail.

If several numbers are saved for a name, you can say also the name and the number type, such as mobile or telephone.

Make calls over the internet

About internet calls

With the internet call network service, you can make and receive calls over the internet. Internet call services may support calls between computers, between mobile phones, and between a VoIP device and a traditional telephone.

Some internet call service providers allow free internet calls. For availability and connectivity costs, contact your internet call service provider.

To make or receive an internet call, you must be in the service area of a WLAN or have a packet data (GPRS) connection in a 3G network, and be signed in to an internet call service.

Install an internet call service

You can search for internet call services from Ovi Store. For details, go to www.ovi.com.

1. Download an installation widget for the internet call service.

2. To start the installation, select the installation widget.
3. Follow the instructions.

When an internet call service has been installed, a tab for the service is displayed in the contacts list.

Make an internet call

When you are signed into a internet call service, you can make a call from the friends list or the contacts list.

Select **Menu** > **Addr. Book**.

Call a contact in the friends list


1. Open the internet call service tab, and sign in to a internet call service.
2. Select a contact from the friends list, and select **Internet call**.

Make an internet call to a phone number or SIP address

1. In the home screen, select **Call** to open the dialler, and enter the number.
2. Select **Options** > **Call** > **Internet call**.



Call the last dialled number

Trying to call someone, but they are not answering? It is easy to call them again. In the Recent Calls application you can see information about the calls you have made and received.

In the home screen, select **Call** to open the dialler, and select . To call the last dialled number, select the number from the list.

Record a phone conversation

With the Recorder application, you can record phone conversations.

1. During an active voice call, select **Menu** > **Applications** > **Office** > **Recorder**.
2. To start recording, select .
3. To stop recording, select . The sound clip is automatically saved to the Audio folder in the File manager application.

Both parties hear a tone at regular intervals during the recording.

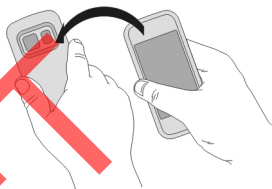
Turn to silence

If your device rings in a situation where you do not want to be disturbed, you can silence the ringing tone.

Activate the turn to silence feature

1. Select **Menu > Settings and Phone > Sensor settings > Sensors > On.**
2. Select **Turning control > Silencing calls.**

When your device rings, turn your device display down.








View your missed calls

In the home screen, you can see when you have missed calls. To view the phone number, select **Show**. The caller's name is displayed if stored in the contacts list.

Missed and received calls are logged only if supported by the network, and the device is switched on and within the network service area.

Call back the contact or number — Select the contact or number.

To view the missed calls list later, in the home screen, select **Call** to open the dialler, select , and open the missed calls tab .

 **Tip:** To view missed calls quickly, in the home screen, select , and open the missed calls tab .

Call your voice mailbox

You can divert your incoming calls to your voice mailbox (network service). People can leave you a message, for example, when you have not answered the call.

In the home screen, select **Call** to open the dialler, and select and hold **1**.

Change the phone number of your voice mailbox

1. Select **Menu > Settings and Calling > Call mailbox.**
2. Select a mailbox and **Options > Change number.**

3. Enter the number (obtained from your network service provider), and select **OK**.

Divert calls to your voice mailbox or another phone number

If you cannot answer your calls, you can divert incoming calls to your voice mailbox or another phone number.

Select **Menu** > **Settings and Calling** > **Call forwarding** > **Voice calls**.

Call divert is a network service. For details, contact your service provider.

Divert all voice calls to your voice mailbox — Select **All voice calls** > **Activate** > **To voice mailbox**.

Divert all voice calls to another phone number

1. Select **All voice calls** > **Activate** > **To other number**.
2. Enter the number, or select **Find** to use a number saved in your contacts list.

Several diverting options, such as **If busy** and **If not answered** can be active at the same time.

In the home screen,  indicates that all calls are diverted.

Call barring and call diverting cannot be active at the same time.

Prevent making or receiving calls

Sometimes you may want to restrict the calls that can be made or received with your device. With call barring (network service), you can, for example, restrict all outgoing international calls or incoming calls when you are abroad.

Select **Menu** > **Settings and Calling** > **Call restriction**.

To modify the settings, you need the barring password from your service provider.

Prevent making calls

1. Select **Cellular call restriction**.
2. To prevent making any calls or international calls, select **Outgoing calls** or **International calls**. To prevent making international calls, but allow calls to your home country, select **International calls except to home country**.
3. Select **Activate**. Call barring affects all calls, including data calls.

Telephone

Prevent receiving calls

1. Select **Cellular call restriction**.
2. To prevent receiving any calls or international calls when you are abroad, select **Incoming calls** or **Incoming calls when roaming**.
3. Select **Activate**.

Prevent anonymous internet calls — Select **Internet call restriction** > **Anonym. call restriction** > **Off**.

Allow calls only to certain numbers

With the fixed dialling service, you can restrict calls, and only allow calls to certain phone numbers. For example, you can allow your children to call only family members or other key numbers.

Select **Menu** > **Addr. Book and Options** > **SIM numbers** > **Fixed dial contacts**.

Not all SIM cards support the fixed dialling service. You need your PIN2 code from your service provider.

Activate fixed dialling — Select **Options** > **Activate fixed dialling**. Enter the PIN2 code.

Select the people to whom calls are allowed

1. Select **Options** > **New SIM contact**.
2. Enter the PIN2 code.
3. Enter the contact name and phone number to which calls are allowed, and select **Done**. To add a contact from the contacts list to the fixed dialling list, select **Fetch from Address Book** and a contact.

To send a text message to a SIM contact while the fixed dialling service is active, you need to add the text message centre number to the fixed dialling list.

Video sharing

About video sharing

With video sharing (network service), you can share live or recorded video from your device to another compatible device, during a voice call.

When you activate video sharing, the loudspeaker is automatically activated. If you do not want to use the loudspeaker, you can use a compatible headset.

Video sharing requirements

To share video, both you and the recipient must:

- Be in a 3G network. If either of you move outside the 3G network, the voice call continues.
- Have the video sharing feature activated.
- Have person-to-person connections set up.

For more information on the service, 3G network availability, and fees associated with using this service, contact your service provider.

Set up video sharing

To set up video sharing, you need person-to-person and 3G connection settings.

A person-to-person connection is also known as a Session Initiation Protocol (SIP) connection. The SIP profile settings must be configured in your device before you can use video sharing. Contact your service provider for the SIP profile settings, and save them to your device. Your service provider may send you the settings in a configuration message or give you a list of the needed parameters.

Set up a person-to-person connection — Select **Menu** > **Settings** and **Connectivity** > **Admin. settings** > **SIP settings**.

Use a 3G connection — For details about networks, contact your service provider.

Add a SIP address to a contact

1. Select **Menu** > **Addr. Book**.
2. Select a contact or create a new contact.
3. Select **Options** > **Edit**.
4. Select **Options** > **Add detail** > **Share video**.
5. Enter the SIP address in the format `username@domainname` (you can use an IP address instead of a domain name).

If you do not know the SIP address for the contact, you can use the phone number of the recipient, including the country code, to share video (if supported by the network service provider).

Share live or recorded video

During an active voice call, select **Options** > **Video Share**.

1. To share live video, select **Live**.

To share a video, select **Recorded** and the desired video. Your device checks if the video must be converted. If needed, the video is automatically converted.

2. Select the desired SIP address or phone number that is stored in the contact card for the recipient. If the SIP address or phone number is not available, manually enter the details, and select **OK**. If entering a phone number, you need to enter the country code. The invitation is sent to the SIP address.

If you access another application while sharing a video, the sharing is paused.

Continue sharing — In the home screen, select **Options** > **Resume Video Share**.

Stop sharing video — Select **Stop**. To end the voice call, select **End**. When you end the call, video sharing also ends.

Save the live video you shared — Select **Yes** when prompted.

Accept a video sharing invitation — Select **Yes**. Video sharing begins automatically.

Messaging

About Messaging

 Select **Menu** > **Messaging**.

You can send and receive various kinds of messages:

- Text messages
- Audio messages
- Multimedia messages that contain pictures and videos
- Group messages

Messaging requires network support.



You can send text messages that are longer than the character limit for a single message. Longer messages are sent as two or more messages. Your service provider may charge accordingly.

Characters with accents, other marks, or some language options, take more space, and limit the number of characters that can be sent in a single message.

Send a message

With text and multimedia messages, you can quickly contact your friends and family. In a multimedia message, you can attach pictures, videos, and sound clips that you want to share.

Select **Menu** > **Messaging**.

1. Select **New message**.
2. To select recipients from the contacts list, select the **To** title. To enter the recipient's phone number manually, enter the number in the **To** field.
3. To add an attachment, select .
4. Select .

Sending a message with an attachment may be more expensive than sending a normal text message. For more information, contact your service provider.



If the item you inserted in a multimedia message is too large for the network, the device may automatically reduce the size.

Only compatible devices can receive and display multimedia messages. Messages may look different in different devices.

Send an audio message

You can record a sound clip, such as a birthday song, and send it to your friend as an audio message.


Select **Menu** > **Messaging**.

1. Select **Options** > **Create message** > **Audio message**.
2. To record the message, select .
3. To select the recipient from the contacts list, select the **To** title. To enter the recipient's phone number manually, enter the number in the **To** field.
4. Select .

Receive messages

When you receive a message, you can open it directly from the home screen. Later, you can find the message in the Conversations folder or in the Inbox folder in Messaging.

Select **Menu** > **Messaging**.

When you receive a message,  and **1 new message** are displayed in the home screen. To open the message, select **Show**. By default, the message is opened in the Conversations view.

Reply to a received message in the Conversations view — Tap the text input field at the bottom of the display, write a message, and select .

Open a message in the Inbox folder — Select **Inbox** and a message.

Reply to a received message in the Inbox view — Open a message, and select .

Save a received multimedia item — Select the item and **Options** > **Save object**. The item can be viewed in the corresponding application. For example, to view saved pictures, open Images.


View a conversation

You can see the messages you have sent to and received from a particular contact from a single view, and continue the conversation from that view.

Select **Menu** > **Messaging**.

Select **Conversations** and a contact. All messages sent to and received from that contact are displayed.

Reply to a message in a conversation

1. Open the conversation.
2. Select the text input field at the bottom of the display, and write a message.
3. To add attachments or more recipients, select **Options** > **Add**.
4. To send the message, select .

When you send a new message, it is added to the current conversation. If no conversation exists, a new conversation is started.

When you open a received message from the home screen, by default, the message opens in the Conversations view. If you want messages to open in the Inbox view, select **Options > Message view > Inbox**.

Listen to a text message

You can set your device to read your text messages aloud.

1. Select **Menu > Messaging**.
2. Select **Inbox**.
3. Select and hold a message, and from the pop-up menu, select **Listen**.

Select **Menu > Applications > Office > Msg. reader**.

Change the language — Open the Speech tab.

Change the voice — Open the Speech tab. To preview the voice, select the voice and **Play voice**.

Download an additional language — Select **Options > Download languages**.

Change language

You can change the device language and the language in which you write your messages and mails. You can also activate predictive text input.

Select **Menu > Settings and Phone > Language**.

Change the device language — Select **Phone language**.

Change the writing language — Select **Writing language**.

Activate predictive text input — Select **Predictive text**.

Chat

About Chat

Select **Menu > Applications > Chat**.

With {Missing display text mapping for 'qtj_wvim_info_application_name' in language 'en'} (network service), you can exchange instant messages with your friends. If you do not have a chat account, you can create a Nokia account, and use Nokia's Ovi Chat.

Mail

You can leave {Missing display text mapping for 'qtj_wvim_info_application_name' in language 'en'} running in the background while you use other features of your device, and still be notified of new instant messages.

If you add the Chat widget to your device home screen, you can sign in to your accounts, see new messages, and change your presence status, from the home screen. To add the widget, in the home screen, select **Options** > **Add content**, and select the Chat widget.

The {Missing display text mapping for 'qtj_wvim_info_application_name' in language 'en'} application may be preinstalled on your device. If it is not, download and install it from Nokia's Ovi Store.

Using network services and downloading content to your device may result in data traffic costs.

Start chatting

Select **Menu** > **Applications** > **Chat**.

1. Select the service or services that you want to use to chat, and then select {Missing display text mapping for 'qtj_wvim_btn1_continue' in language 'en'}.
2. In your contacts list, select the contact you want to chat with.

You can have ongoing conversations with several contacts at the same time.

Get more information — Select the options icon and the appropriate option.

Mail

Mail

About Mail

Select **Menu** > **Applications** > **Mail**.

With Mail, you can add several mailboxes and access them directly from your home screen. In the main mail view, you can switch from one mailbox to another.

If you do not have a mail account, you can create one at www.ovi.com.

Mail contains interactive elements. Select and hold, for example, a mail to view a pop-up menu.

Add a mailbox

You can add several mailboxes to your device.

Select **Menu** > **Applications** > **Mail**.

Add a mailbox — Select **New**, and follow the instructions.

Add a mail widget to the home screen — In the home screen, tap and hold an empty area. Select  and the desired widget from the list.

Delete a mailbox — Select **Options** > **Delete mailbox** and the mailbox.

Read mail

You can use your device to read and reply to mail.

Select **Menu** > **Applications** > **Mail**

Read a mail — Select a mail. To zoom in or out, pinch the screen.

Open or save an attachment — Select and hold the attachment, and from the pop-up menu, select the appropriate option. If there is more than one attachment, you can save them all at once.

Reply to a mail — Select .

Forward a mail — Select .



Tip: If there is a web address in a mail and you would like to open the address in the device browser, or add it to your bookmarks, select the address, and from the pop-up menu, select the desired option.

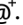




Tip: To open the next or previous mail, use the arrow icons.

Send a mail

You can use your device to write and send mail, and attach files to your mail.

Select **Menu** > **Applications** > **Mail**.

1. Select .
2. To add a recipient from your contacts list, select the To, Cc, or Bcc icon. To enter a mail address manually, select the To, Cc, or Bcc field.
3. To add an attachment to the mail, select .
4. To send the mail, select .

About Nokia Messaging

The Nokia Messaging service automatically transfers mail from your existing mail address to your device. You can read, respond to, and organise your mails on the go.

To set up your mail account on your device, depending on your device, select **New mailbox** in the home screen, or select **Menu > Applications > Mail and New**, and follow the instructions.

If you do not have a mail account, you can create one at www.ovi.com.


The Nokia Messaging service may be chargeable. For information on possible costs, contact your service provider or the Nokia Messaging service at messaging.nokia.com.

Nokia Messaging is a network service, and may not be available in all regions.

Open mail from the home screen

You can have several mail widgets in the home screen, depending on your device. Each mail widget contains one mailbox. In the widget, you can see if you have received new mail and the number of unread mails.

Add a mail widget to the home screen — In the home screen, select **New mailbox**, and follow the instructions.

Add another mail widget to the home screen — Tap and hold the home screen, and select  and the desired widget from the list.

Open a mail — In the mail widget, select a mail.

Internet

About Internet

 Select **Menu > Internet**.

With the Internet application, you can view web pages on the internet.

To browse the web, you must have an internet access point configured in your device and be connected to a network.

Browse the web

Select **Menu** > **Internet**.



Tip: If you do not have a flat-rate data plan from your service provider, to save data costs in your phone bill, you can use a wireless local area network (WLAN) to connect to the internet.

Go to a web page — From the toolbar, select  and enter a web address.

Zoom in or out — Place two fingers on the screen, and slide your fingers together or apart.



A cache is a memory location that is used to store data temporarily. If you have, or have tried to, access confidential information or a secure service, requiring passwords, clear the cache after each use.

Empty the cache — Select **Options** > **Clear privacy data** > **Cache**.

Add a bookmark

If you visit the same websites all the time, add them to your Bookmarks view, so you can easily access them.

Select **Menu** > **Internet**.


While browsing, select  > .

Go to a bookmarked website while browsing — Select  and a bookmark.

Subscribe to a web feed

You don't have to visit your favourite websites regularly to keep up with what's new on them. You can subscribe to web feeds and get links to latest content automatically.

Select **Menu** > **Internet**.

Web feeds on web pages are usually indicated with . They are used to share, for example, the latest news headlines or blog entries.

Subscribe to a feed — Go to a blog or web page that contains a web feed, and select **Options** > **Subscribe to web feeds**.

Manually update a feed — In the Web feeds view, select the feed.

Set a feed to automatically update — In the Web feeds view, select and hold the feed, and from the pop-up menu, select **Edit** > **Automatic updates**.


Camera

About Camera






 **Select Menu** > **Applications** > **Camera**.

Why carry a separate camera if your device has all you need for capturing memories? With the Camera application, you can easily take pictures or record videos. You can later use your device to view or edit the pictures and videos, share them on the internet, or send them to compatible devices.

Take a picture

Press and hold .

Your device camera has the full focus feature. With this feature, you can take pictures where objects both in the foreground and background are in focus.

1. Press  halfway down to lock the focus on an object (not available in landscape or sport scene modes). A green locked focus indicator is displayed. If the focus was not locked, a red focus indicator is displayed. Release , and press it halfway down again. You can also take a picture without locking the focus.
2. To activate the face tracking feature, select  > **Face detect**. The face tracker detects and draws white rectangles around faces, even when they are moving. The priority face has a yellow rectangle drawn around it. To focus on the priority face, press  halfway down. A green locked focus indicator is displayed.
3. Press . Do not move the device before the picture is saved and the final picture displayed.

Pictures and videos are saved to the memory card by default.



Save location information to your pictures and videos

If you sometimes struggle to remember exactly where you were when you took a particular picture or video while hiking or travelling, you can set your device to automatically record the location. Later, you can view the locations on a map.



Location information can be attached to an image or a video clip if location coordinates can be determined via network and GPS. If you share an image or a video clip which has location information attached, the location information is visible to others that view the image or the video clip. You can deactivate geotagging in the camera settings.

Select **Menu** > **Applications** > **Camera**.

Activate the location recording feature — Select **Options** > **Settings** > **Show GPS info** > **Yes**. The location information is available only for pictures taken with the main camera.

It may take several minutes to obtain the coordinates of your location. The availability and quality of GPS signals may be affected by your location, buildings, natural obstacles, and weather conditions. If you share a file that includes location information, also the location information is shared, and your location may be visible to third parties viewing the file. This feature requires network service.

Location information indicators:

-  — Location information is unavailable. Location information may not be saved to pictures or videos.
-  — Location information is available. Location information is saved to pictures or videos.

Take a close-up picture

It can be tricky to get small objects, such as insects or flowers, in focus. You need to move the camera closer to the object. To take sharp and precise pictures of even the tiniest details, use close-up mode.

Select **Menu** > **Applications** > **Camera**.


Activate close-up mode — Select  > **Scene mode** > **Close-up**.

Take a picture in the dark

If you activate night mode, you can take pictures even when light levels are low.

Select **Menu** > **Applications** > **Camera**.

Activate night mode

1. Select  > **Scene modes**.
2. To use the flash, select **Night portrait**. If you do not want to use the flash, select **Night**.

Take a picture of a moving object

Are you at a sports event and want to capture the action with your device? Use sport mode to take a sharp picture of moving people.



Select **Menu** > **Applications** > **Camera**.

Activate sport mode — Select  > **Scene mode** > **Sport**.

Picture tips


Select **Menu** > **Applications** > **Camera**.




When taking a picture, note the following:

- Use both hands to keep the camera steady.
- When you zoom in, the image quality may decrease.
- The camera activates battery saving mode after about a minute of inactivity. To activate the camera again, press  briefly.
- You can set the user defined scene to be used as the default scene every time you open the Camera application. Select  > **Scene mode** > **User defined** > **Edit**. Modify the settings, and set **Set as default scene mode** to **Yes**.
- Keep a safe distance when using the flash. Do not use the flash on people or animals at close range. Do not cover the flash while taking a picture.

Record a video

Besides taking pictures with your device, you can also capture your special moments as videos.

Press and hold .

1. To switch from image mode to video mode, if necessary, select .
2. To start recording, press . A red record icon is displayed.
3. To pause recording, select **Pause**. If you pause recording and do not press any key within one minute, the recording stops.
To zoom in or out, use the volume keys.
4. To stop recording, press . The video is automatically saved in Images.

Send a picture

You can send pictures to your friends as a multimedia or mail message, or through Bluetooth connectivity.

1. Take a picture.
2. Select **Options** > **Send**.
3. Select the desired sending method.

Your pictures and videos

About Photos

 **Select Menu** > **Images**.

The Photos application is the place from where you can view all pictures and videos on your device. You can easily watch videos, or browse through pictures, and print out the best shots.

You can also view the pictures and videos on a compatible TV.

To manage your media files more effectively, add tags to the files, or organise them in categories.

View pictures and videos

Select Menu > **Images**.

Your pictures and videos

Browse the pictures and videos — Select a folder, and swipe up or down.

View a picture in full screen mode — Select the picture, and turn your device to landscape mode. To browse pictures in full screen mode, swipe left or right. To view the zoom slider, tap the picture. Alternatively, place two fingers on the screen, and to zoom in, slide your fingers apart. To zoom out, slide your fingers together.

View your pictures as a slide show — Select a picture and **Options** > **Slide show** > **Play**. The slide show starts from the selected picture.

Play a video — Select a folder and a video.

Pictures and videos can also be sent to you from a compatible device. To be able to view a received picture or video in Images, you must first save it.



Edit the pictures you have taken

With Photo editor, you can add effects, text, clip art, or frames to your pictures.

Select **Menu** > **Applications** > **{Missing display text mapping for 'str_r_pe_caption_string.photoeditor' in language ''}** and a picture.

1. To insert effects, select the desired option from the extended toolbar.
2. To save the edited picture, select **{Missing display text mapping for 'str_sk_options.photoeditor' in language 'en'}** > **{Missing display text mapping for 'str_menutitem_save.photoeditor' in language 'en'}**. The edited picture does not replace the original picture.

To later view your edited pictures, select **Menu** > **Images**.

Video editor

About Video Editor

Select **Menu** > **Applications** > **Video Editor**.

With the Video Editor application, pictures and videos, combined with sounds, effects, and text are easily turned into short movies or slideshows.

Create a movie

With Storyboard, you can easily create short movies from videos and pictures.

Select **Menu > Applications > Video Editor**.

1. Select **Storyboard**.
2. To add videos and pictures to your movie, select **Select media**. To view the files you have selected, swipe right or left.
3. To add transitions between videos and pictures, select **+**.
4. To activate editing mode, select a video or picture. In editing mode, you can cut the length of the video or define how long a picture is displayed.
5. To add sounds to your movie, select **Set background music**.
6. To add text or subtitles to your movie, select **Add text**.
7. Save your movie.

Create a slideshow

The Video Editor application contains templates for different occasions. You can use them to create slideshows of events, such as anniversaries or parties.

Select **Menu > Applications > Video Editor**.

1. Select **Slide show**.
2. Select a template to use for the slideshow. When you select a template, a preview is displayed.
3. Select the pictures to use.
4. Select the sounds to play in the background.
5. Add a title.
6. Preview and save your slideshow.

Print a picture you have taken

You can print your pictures directly using a compatible printer.

1. Use a compatible USB data cable to connect your device to a printer in Media transfer mode.


Videos and TV

2. Select the picture to print.
3. Select **Options** > **Print**.
4. To use the USB connection to print, select **Print** > **Via USB**.
5. To print the picture, select **Options** > **Print**.



Tip: You can also use a Bluetooth printer. Select **Print** > **Via Bluetooth**. Change the selected printer to Bluetooth, and follow the instructions on the display.




Tip: When the USB cable is connected, you can change the USB mode. In the top right corner of the browsing view, select  > **USB**.

Videos and TV

Videos

About Videos

 With the Videos application, you can watch videos on your device.

Using a packet data access point to download a video may involve the transmission of large amounts of data through your service provider's network. For information about data transmission charges, contact your service provider.

Play a video

Select **Menu** > **Videos**.

Select the video.

Use the video player controls — Tap the screen.

Copy a video from your PC

Do you have videos on your PC that you want to watch on your device? Use a USB data cable to copy videos between your computer and your device.

1. Use a compatible USB data cable to connect your device to your computer. Make sure a compatible memory card is inserted in your device.
2. Open Nokia Ovi Suite on your computer, and follow the displayed instructions. In your device, videos that are in a supported format are displayed in Videos.

Watch Web TV

With On demand Web TV, you can keep up with the news and catch up on the latest episodes of your favourite TV series.

Select **Menu** > **Web TV**.

To stream content over the air using Web TV, you need to use a 3G, 3.5G, or WLAN connection. Using Web TV services may involve the transmission of large amounts of data. For information about data transmission charges, contact your network service provider.

The selection of pre-installed Web TV services depends on the country and network service provider. The content of the Web TV services varies by service.

1. Select a Web TV application. To browse Web TV content in the Web TV application, swipe the screen.
2. To start playback, select the thumbnail image.
3. To show or hide the controls during playback, tap the screen.
4. To adjust the volume, use the volume keys.

Add a Web TV widget to your home screen — Tap and hold the home screen, and select  and the desired Web TV application.

Listen to music

Music player

About Music player

 Select **Menu** > **Music**.

With the Music player application, you can listen to music and podcasts while on the move.

Play music


Select **Menu** > **Music**.

1. Select **Options** and the desired view. You can browse songs by song or album. In the album view, to browse the album covers, turn your device so it is horizontal, and swipe left or right.

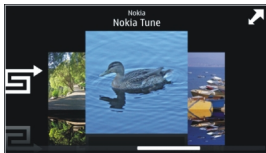
Listen to music

2. Select a song or album.



Tip: To listen to the songs in a random order, select .

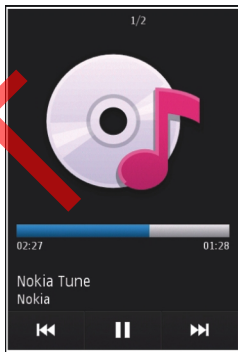
Pause and resume playback — To pause playback, select ; to resume, select .



Fast-forward or rewind a song — Select and hold  or .



Tip: When listening to music, you can return to the home screen, leaving Music player application playing in the background.



Create a playlist

Want to listen to different music for different moods? With playlists, you can create selections of songs to play in a specific order.

Select **Menu** > **Music**.

1. Select **Options** > **Playlists**.
2. Select **Options** > **New playlist**.
3. Enter a name for the playlist, and select **OK**.
4. Select the songs to add to the playlist, in the order you want them to play.

If a compatible memory card is inserted, the playlist is saved to the memory card.

Add a song to a playlist — Select and hold the song, and from the pop-up menu, select **Add to playlist**.

Remove a song from playlist — In the playlist view, select and hold the song, and from the pop-up menu, select **Remove**. This does not delete the song from the device; it only removes it from the playlist.


Play a playlist — Select **Options** > **Playlists** and the playlist.

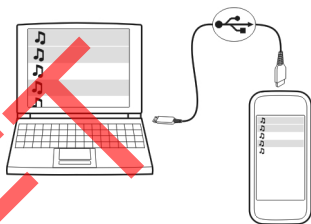


Tip: Music player automatically creates a playlist for the most played songs, recently played songs, and recently added songs.

Copy music from your PC

Do you have music on your PC that you want to listen on your device? Nokia Ovi Player is the fastest way to transfer music on your device, and you can use it to manage and synchronise your music collection.

1. Use a compatible USB data cable to connect your device to your computer. Make sure a compatible memory card is inserted in your device.
2. On your device, select the notification area in the top right corner, and select  > **USB** > **Media transfer**.
3. On your computer, open Nokia Ovi Player. For more information, see the Ovi Player help.



Download the latest version of Ovi player from www.ovi.com.

Some music files can be protected by digital rights management (DRM) and cannot be played on more than one device.

Protected content

Digital rights management (DRM) protected content, such as pictures, videos, or music, comes with an associated licence that defines your rights to use the content.

You can view the details and status of the licences, and reactivate and remove licences.

Manage digital rights licences — Select **Menu** > **Settings** > **Phone mgmt.** > **Security settings** > **Protected content**.


Record sounds

You can use Recorder to record sounds from nature, such as bird singing, as well as voice memos. You can send the recorded sound clips to your friends.

Select **Menu** > **Applications** > **Office** > **Recorder**.

Listen to music

Record a sound clip — Select .

Stop recording — Select . The sound clip is automatically saved to the Audio folder in the File manager application.

Send a recorded sound clip as an audio message — Select **Options** > **Send**.

Play music through a radio

About the FM transmitter



Select **Menu** > **Applications** > **Tools** > **FM transmitter**.

With the FM transmitter, you can play songs stored in your device through any compatible FM radio, such as a car radio or a home stereo system.

The operating distance of the FM transmitter is approximately 2 metres (6 feet). Obstructions, such as walls, other electronic devices, or public radio stations may cause interference to the transmission. The operating frequency of the FM transmitter varies by region.

FM transmitter may cause interference to nearby FM radios operating on the same frequency. To avoid interference, always search for a free FM frequency on the receiving radio before activating the FM transmitter.

The FM transmitter cannot be used at the same time as the FM radio of your device.



Note: Using FM transmitter may be restricted in some countries. For more information, contact your local authorities and go to www.nokia.com/fmtransmitter.

Play a song through a radio

Do you want to listen to your songs at a higher volume, or through better quality hi-fi stereo speakers? You can play the songs through an FM radio.

1. Tune the receiving radio to a free frequency.
2. Select **Menu** > **Music**.
3. Select a song or a playlist to be played.
4. Go to Now playing view, and select **Options** > **FM transmitter**.
5. To activate the FM transmitter, select **FM transmitter** > **On**.
6. Enter the frequency to which you tuned the receiving radio.



Example: If the frequency 107.8 MHz is free in your area and you tune your FM radio to that frequency, also tune the FM transmitter to 107.8 MHz.

To adjust the volume, use the volume function in the receiving radio.

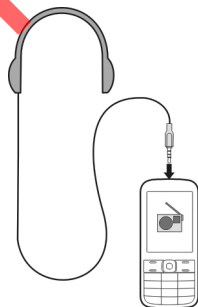
FM radio

About FM radio

 **Select Menu** > **Applications** > **Radio**.

You can listen to FM radio stations using your device - just plug in a headset, and select a station!



To listen to the radio, you need to attach a compatible headset to the device. The headset acts as an antenna.



Find and save radio stations

Search for your favourite radio stations, and save them, so you can easily listen to them later.

Select Menu > **Applications** > **Radio**.


From the toolbar, select  > .

To find radio stations, you can use the automatic scanning, or you can set a frequency manually. The first time you open the FM radio, the application automatically searches for radio stations audible at your location.

Scan for all available stations

1. From the toolbar, select .

Listen to music

2. To save all found stations, from the toolbar, select . To save a single station, select and hold the station title, and from the pop-up menu, select **Save**.



Set a frequency manually

1. From the toolbar, select  **Tune manually**.
2. Use the up and down arrow icons to enter a frequency.

Listen to the radio

You can enjoy your favourite FM radio stations on the go.

Select **Menu** > **Applications** > **Radio**.

Listen to a saved station — From the toolbar, select  > , and select a station from the list.

Go to the next or previous saved station — Swipe right or left. Alternatively, select  or .

Scan for another available station — Swipe up or down. Alternatively, select and hold  or .

Listen to the radio using the loudspeaker — Select **Options** > **Activate loudspeaker**. You still need to have a headset attached.

You can make or answer a call while listening to the radio. The radio is automatically muted during an active call.

The quality of the radio broadcast depends on the coverage of the radio station in the area.



Reorder the list of saved stations

You can reorder the list of saved stations, so that your favourites are at the top.

Select **Menu** > **Applications** > **Radio**.

The stations you have saved are listed in the Station list view.

Move a station on the list

1. From the toolbar, select  > .
2. Select and hold the station title, and from the pop-up menu, select **Move**.
3. Select the new place on the list.

Maps

Maps overview

 Select Menu > Maps.

Welcome to Maps.

Maps shows you what is nearby, helps you plan your route, and guides you where you want to go.

- Find cities, streets, and services.
- Find your way with turn-by-turn directions.
- Synchronise your favourite locations and routes between your mobile device and the Ovi Maps internet service.
- Check weather forecasts and other local information, if available.

Some services may not be available in all countries, and may be provided only in selected languages. The services may be network dependent. For more information, contact your network service provider.

Using the service or downloading content may cause transfer of large amounts of data, which may result in data traffic costs.

Almost all digital cartography is inaccurate and incomplete to some extent. Never rely solely on the cartography that you download for use in this device.




Some content is generated by third parties and not Nokia. The content may be inaccurate and is subject to availability.

My position

View your location and the map

See your current location on the map, and browse maps of different cities and countries.

Select Menu > Maps and {Missing display text mapping for 'qtn_command_services_myposition.sg_touch' in language 'en'}.

 marks your current position, if available. When your device is searching for your position,  blinks. If your position is not available,  indicates your last known position.

Maps

If only cell ID based positioning is available, a red halo around the positioning icon indicates the general area you might be in. In densely populated areas, the accuracy of the estimate increases, and the red halo is smaller than in lightly populated areas.

Move on the map — Drag the map with your finger. By default, the map is oriented north.

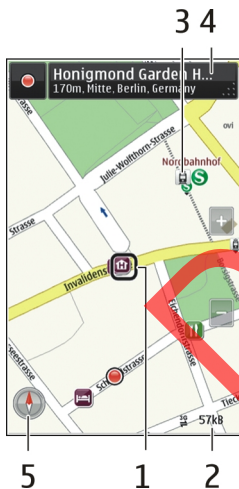
View your current or last known location — Select .

Zoom in or out — Select + or -.

If you browse to an area not covered by the maps that are stored on your device and you have an active data connection, new maps are automatically downloaded.

Map coverage varies by country and region.

Map view



1 — Selected location

2 — Indicator area

3 — Point of interest (for example, a railway station or a museum)

4 — Information area

Change the look of the map

View the map in different modes, to easily identify where you are.

Select **Menu > Maps** and {Missing display text mapping for 'qtn_command_services_myposition.sg_touch' in language 'en'}.

Select  and from the following:

- **Map view** — In the standard map view, details such as location names or motorway numbers, are easy to read.
- **Satellite view** — For a detailed view, use satellite images.
- **Terrain view** — View at a glance the ground type, for example, when you are travelling off-road.
- **3D** — For a more realistic view, change the perspective of the map.
- **Landmarks** — Display prominent buildings and attractions on the map.
- **Night mode** — Dim the colours of the map. When travelling at night, the map is easier to read in this mode.


Download and update maps

To avoid mobile data transfer costs, download the latest maps and voice guidance files to your computer, and then transfer and save them to your device.

Use the Nokia Ovi Suite application to download the latest maps and voice guidance files to your compatible computer. To download and install Nokia Ovi Suite on your compatible computer, go to www.ovi.com.



Tip: Save new maps to your device before a journey, so you can browse the maps without an internet connection when travelling abroad.

To make sure your device does not use an internet connection, in the main menu, select  > **Internet > Connection > Offline**.

Use the compass

When the compass is activated, both the arrow of the compass and the map rotate automatically in the direction to which the top of your device is pointing.

Select **Menu > Maps** and {Missing display text mapping for 'qtn_command_services_myposition.sg_touch' in language 'en'}.

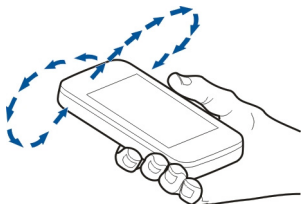
Activate the compass — Select .

Deactivate the compass — Select  again. The map is oriented north.

Maps

The compass is active when there is a green outline. If the compass needs calibration, the outline of the compass is red or yellow.

Calibrate the compass — Rotate the device around all axes in a continuous movement until the outline of the compass turns green.



The compass has limited accuracy. Electromagnetic fields, metal objects, or other external circumstances may also affect the accuracy of the compass. The compass should always be properly calibrated.

About positioning methods

Maps displays your location on the map using GPS, A-GPS, WLAN, or cell ID based positioning.

The Global Positioning System (GPS) is a satellite-based navigation system used for calculating your location. Assisted GPS (A-GPS) is a network service that sends you GPS data, improving the speed and accuracy of the positioning.

Wireless local area network (WLAN) positioning improves position accuracy when GPS signals are not available, especially when you are indoors or between tall buildings.

With cell ID based positioning, the position is determined through the antenna tower your mobile device is currently connected to.

When you use Maps for the first time, you are prompted to define the internet access point to use to download map information, use A-GPS, or connect to a WLAN.

The availability and quality of GPS signals may be affected by your location, satellite positions, buildings, natural obstacles, weather conditions and adjustments to GPS satellites made by the United States government. GPS signals may not be available inside buildings or underground.

Do not use GPS for precise location measurement, and never rely solely on the location information provided by GPS and cellular networks.




Note: Using WLAN may be restricted in some countries. For example, in France, you are only allowed to use WLAN indoors. For more information, contact your local authorities.

Find places

Find a location

Maps helps you find specific locations and businesses.

Select **Menu** > **Maps and Search**.

1. Enter search words, such as a street address or postcode. To clear the search field, select .
2. Select **Go**.
3. Select an item from the list of proposed matches.

The location is displayed on the map. To view the other locations of the search result list on the map, select one of the arrows beside the information area



Return to the list of proposed matches — Select **List**.

Search for different types of nearby places — Select **Browse categories** and a category, such as shopping, accommodation, or transport.


If no search results are found, ensure the spelling of your search terms is correct. Problems with your internet connection may also affect results when searching online.


To avoid data transfer costs, you can also get search results without an active internet connection, if you have maps of the searched area stored on your device.

View location details

View more information about a specific location or place, such as a hotel or restaurant, if available.

Select **Menu** > **Maps and** {Missing display text mapping for 'qtn_command_services_myposition.sg_touch' in language 'en'}.

View the details of a place — Select a place, its information area , and **Show details**.

Rate a place — Select a place, its information area , **Show details**, and the star rating. For example, to rate a place as being 3 out of 5 stars, select the third star. To rate a place, you need an active internet connection.

When you find a place that does not exist or contains inappropriate information or incorrect details, such as the wrong contact information or location, it is recommended that you report it to Nokia.

Maps

Report incorrect information — Select a place and its information area (ⓘ), and select **Show details** > {Missing display text mapping for 'places_label20' in language 'en'} and the appropriate option. To report a place, you need an active internet connection.

The available options may vary.

Favourites

Save places and routes

Save addresses, places of interest, and routes, so they can be quickly used later.

Select **Menu** > **Maps**.

Save a place

1. Select {Missing display text mapping for 'qtn_command_services_myposition.sg_touch' in language 'en'}.
2. Tap the location. To search for an address or place, select **Search**.
3. Tap the location's information area (ⓘ).
4. Select **Save place**.

Save a route

1. Select {Missing display text mapping for 'qtn_command_services_myposition.sg_touch' in language 'en'}.
2. Tap the location. To search for an address or place, select **Search**.
3. Tap the location's information area (ⓘ).
4. To add another route point, select **Add to route**.
5. Select **Add new route point** and the appropriate option.
6. Select **Show route** > **Options** > **Save route**.

View your saved places and routes — Select {Missing display text mapping for 'qtn_command_services_favorites.sg_touch' in language 'en'} > **Places or Routes**.

View and organise places or routes

Use your Favourites to quickly access the places and routes you have saved.

Group the places and routes into a collection, for example, when planning a trip.

Select Menu > Maps and {Missing display text mapping for 'qtn_command_services_favorites.sg_touch' in language 'en'}.

View a saved place on the map

1. Select **Places**.
2. Go to the place.
3. Select **Map**.

To return to the list of saved places, select **List**.

Create a collection — Select **Create new collection**, and enter a collection name.

Add a saved place to a collection

1. Select **Places** and the place.
2. Select **Organize collections**.
3. Select **New collection** or an existing collection.

If you need to delete places or routes, or add a route to a collection, go to the Ovi Maps internet service at www.ovi.com.

Send places to your friends

When you want to share place information with your friends, send these details directly to their devices.

Select Menu > Maps and {Missing display text mapping for 'qtn_command_services_myposition.sg_touch' in language 'en'}.

Send a place to your friend's compatible device — Select a location on the map, tap the location's information area (i), and select **Send**.


Synchronise your Favourites

Plan a trip on your computer at the Ovi Maps website, synchronise the saved places, routes, and collections with your mobile device, and access the plan on the go.

To synchronise places, routes, or collections between your mobile device and the Ovi Maps internet service, you need a Nokia account. If you do not have one, in the main view, select **Accounts > Nokia account > Create new account**.

Synchronise saved places, routes, and collections — Select {Missing display text mapping for 'qtn_command_services_favorites.sg_touch' in language 'en'} > **Synchronize with Ovi**. If you do not have a Nokia account, you are prompted to create one.

Maps

Set the device to synchronise Favourites automatically — Select  > **Synchronization** > **Synchronization** > **At start-up and shut-d..** The device starts the synchronisation when you open or close the Maps application.

Synchronising requires an active internet connection, and may involve the transmission of large amounts of data through your service provider's network. For information about data transmission charges, contact your service provider.

To use the Ovi Maps internet service, go to www.ovi.com.

Drive and Walk

Get voice guidance


Voice guidance, if available for your language, helps you find your way to a destination, leaving you free to enjoy the journey.

Select **Menu** > **Maps** and {Missing display text mapping for 'qtn_command_services_drive.sg_touch' in language 'en'} or {Missing display text mapping for 'qtn_command_services_walk.sg_touch' in language 'en'}.

When you use drive or walk navigation for the first time, you are asked to select the language of the voice guidance, and download the appropriate files.

If you select a language that includes street names, also the street names are said aloud. Voice guidance may not be available for your language.

Change the voice guidance language — In the main view, select  and **Navigation** > **Drive guidance** or **Walk guidance** and the appropriate option.

Deactivate voice guidance — In the main view, select  and **Navigation** > **Drive guidance** or **Walk guidance** and **None**.

Repeat the voice guidance for car navigation — In the navigation view, select **Options** > **Repeat**.

Adjust the volume of the voice guidance for car navigation — In the navigation view, select **Options** > **Volume**.

Drive to your destination


When you need turn-by-turn directions while driving, Maps helps you get to your destination.

Select **Menu** > **Maps** and {Missing display text mapping for 'qtn_command_services_drive.sg_touch' in language 'en'}.

Drive to a destination — Select **Set destination** and the appropriate option.

Drive to your home — Select **Drive home**.

When you select **Drive home** or **Walk home** for the first time, you are prompted to define your home location. To later change the home location, do the following:

1. In the main view, select .
2. Select **Navigation** > **Home Location** > **Redefine**.
3. Select the appropriate option.

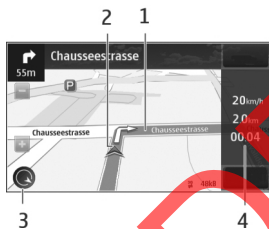


Tip: To drive without a set destination, select **Map**. Your location is displayed on the centre of the map as you move.

Change views during navigation — Swipe the screen to select **2D view**, **3D view**, **Arrow view**, or **Route overview**.

Obey all local laws. Always keep your hands free to operate the vehicle while driving. Your first consideration while driving should be road safety.

Navigation view



- 1 — Route
- 2 — Your location and direction
- 3 — Compass
- 4 — Information bar (speed, distance, time)

Get traffic and safety information

Enhance your driving experience with real-time information about traffic events, lane assistance, and speed limit warnings, if available for your country or region.


Select **Menu** > **Maps** and {Missing display text mapping for 'qtn_command_services_drive.sg_touch' in language 'en'}.

Maps

View traffic events on the map — During drive navigation, select **Options** > **Traffic info**. The events are displayed as triangles and lines.

Update traffic information — Select **Options** > **Traffic info** > **Update traffic info**.

When planning a route, you can set the device to avoid traffic events, such as traffic jams or roadworks.

Avoid traffic events — In the main view, select  > **Navigation** > **Reroute due to traffic**.

The location of speed cameras may be shown on your route during navigation, if this feature is enabled. Some jurisdictions prohibit or regulate the use of speed camera location data. Nokia is not responsible for the accuracy, or the consequences of using speed camera location data.

Walk to your destination


When you need directions to follow a route on foot, Maps guides you over squares, and through parks, pedestrian zones, and even shopping centres.

Select **Menu** > **Maps** and {Missing display text mapping for 'qtn_command_services_walk.sg_touch' in language 'en'}.

Walk to a destination — Select **Set destination** and the appropriate option.

Walk to your home — Select **Walk home**.

When you select **Drive home** or **Walk home** for the first time, you are prompted to define your home location. To later change the home location, do the following:

1. In the main view, select .
2. Select **Navigation** > **Home Location** > **Redefine**.
3. Select the appropriate option.



Tip: To walk without a set destination, select **Map**. Your location is displayed on the centre of the map as you move.

Plan a route

Plan your journey, and create your route and view it on the map before setting off.

Select **Menu** > **Maps** and {Missing display text mapping for 'qtn_command_services_myposition.sg_touch' in language 'en'}.

Create a route

1. Tap the location of your starting point. To search for an address or place, select **Search**.
2. Tap the location's information area (i).
3. Select **Add to route**.
4. To add another route point, select **Add new route point** and the appropriate option.

Change the order of the route points

1. Select a route point.
2. Select **Move**.
3. Tap the place where you want to move the route point to.

Edit the location of a route point — Tap the route point, and select **Edit** and the appropriate option.

View the route on the map — Select **Show route**.

Navigate to the destination — Select **Show route** > **Options** > **Start driving** or **Start walking**.

Change the settings for a route

The route settings affect the navigation guidance and the way the route is displayed on the map.

1. In the route planner view, open the Settings tab. To get to the route planner view from the navigation view, select **Options** > **Route pts.** or **Route point list**.
2. Set the transportation mode to **Drive** or **Walk**. If you select **Walk**, one-way streets are regarded as normal streets, and walkways and routes through, for example, parks and shopping centres, can be used.
3. Select the desired option.

Select the walking mode — Open the Settings tab, and select **Walk** > **Preferred route** > **Streets** or **Straight line**. **Straight line** is useful on off-road terrain as it indicates the walking direction.

Use the faster or shorter driving route — Open the Settings tab, and select **Drive** > **Route selection** > **Faster route** or **Shorter route**.

Time management

Use the optimised driving route — Open the Settings tab, and select **Drive > Route selection > Optimized**. The optimised driving route combines the advantages of both the shorter and the faster routes.

You can also choose to allow or avoid using, for example, motorways, toll roads, or ferries.

Time management

Clock


About the clock

 Select **Menu > Applications > Clock**.

Set and manage alarms, and check local times in different countries and cities.

Set the time and date

In the home screen, select the clock and **Options > Settings > Time or Date**.

 **Tip:** To view the time and date when the screen and keys are locked, press and hold the menu key.

Set an alarm

You can use your device as an alarm clock.

In the home screen, select the clock.

1. Select **New alarm**.
2. Set the alarm time, and enter a description.
3. To set the alarm to sound, for example, at the same time every day, select **Repeat**.

Remove an alarm — Select and hold the alarm, and from the pop-up menu, select **Delete alarm**.

Snooze an alarm

When an alarm sounds, you can snooze the alarm. This pauses the alarm for a defined length of time.

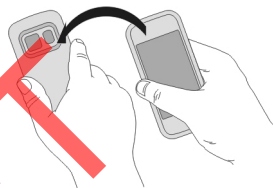
When the alarm sounds, select **Snooze**.

Set the length of the snooze time — In the home screen, select the clock and **Options** > **Settings** > **Alarm snooze time**, and set the length of time.

You can snooze alarms also by turning your device display down. To use this feature, you must first activate the sensors.

Activate the sensors — Select **Menu** > **Settings and Phone** > **Sensor settings** > **Sensors** > **On**.

Activate turning control for snoozing — Select **Menu** > **Settings and Phone** > **Sensor settings** > **Turning control** > **Snoozing alarms**.



Update the time and date automatically

You can set your device to update the time, date, and time zone automatically.

In the home screen, select the clock and **Options** > **Settings** > **Automatic time update** > **On**.

Automatic update is a network service.

Change the time zone when travelling

You can set the clock to the local time when travelling abroad.

In the home screen, select the clock, and open the world clock tab.

Add a location — Select **Options** > **Add location** and a location.

Set your current location — Select and hold a location, and from the pop-up menu, select **Set as current location**. The time in your device is changed according to the selected location. Make sure the time is correct.

Check the time in different cities

To view the time in different locations, add them to your world clock tab. You can also add pictures for the locations, for example, a picture of your friend who lives in the city in question, or a view from your favourite tourist attraction.

In the home screen, select the clock, and open the world clock tab.

Time management

Add a location — Select **Options** > **Add location** and a location. You can add up to 15 locations.

Add a picture for a location — Select and hold a location, and from the pop-up menu, select **Change image** and a picture.

Calendar

About the calendar

 **Select Menu** > **Calendar**.

With your device calendar, you can do the following:



- Keep your schedules organised
- Add reminders for anniversaries and other important dates
- Keep your to-do list up to date

You can have separate calendars for free time and work.

View your schedule for the week

You can browse your calendar entries in different views. To easily check all the entries for a particular week, use the week view.



Select **Menu** > **Calendar**.

From the toolbar, select  > .

Add a task to your to-do list

Do you have important tasks to handle at work, library books to return, or maybe an event you want to attend? You can add tasks (to-do notes) to your calendar. If you have a particular deadline, set a reminder.



Select **Menu** > **Calendar**.

1. Go to the desired date, and select .
2. Select the entry type field and **To-do note**.
3. Fill in the fields. To close the text input dialog, select .
4. To add a reminder for the task, select **Alarm** > **On**.

Add an appointment

Save your important appointments to your calendar as meeting entries.

Select **Menu** > **Calendar**.

1. Go to the desired date, and select . The meeting entry is selected as default.
2. Fill in the fields. To close the text input dialog, select .
3. To repeat the meeting entry at regular intervals, select **Repeat** and the time interval. Select **Repeat until**, and enter the end date.

Remember a birthday

You can add a reminder for birthdays and other special dates. The reminders are repeated annually.

Select **Menu** > **Calendar**.

1. Go to the desired date, and select **Options** > **New entry** > **Anniversary**.
2. Fill in all the fields. To close the text input dialog, select .

Use separate calendars for work and free time

You can have more than one calendar. Create one for work and another for your free time.


Select **Menu** > **Calendar**.

Create a new calendar

1. Select **Options** > **Manage calendars**.
2. Select **Options** > **Create new calendar**.
3. Enter a name, and set a colour code for the calendar.
4. Define the visibility for the calendar. When a calendar is hidden, the calendar entries and reminders are not displayed in different calendar views or in the home screen.

Modify calendar settings — In the **Manage calendars** view, select the desired calendar.

Add an entry to a particular calendar

1. Go to the desired date, and select .
2. Select the desired entry type.
3. Select **Calendar entry saved to** and the calendar you want to save the entry to.

In different calendar views, the colour codes indicate to which calendar an entry is saved.

Office

Quickoffice

About Quickoffice

 Select **Menu** > **Applications** > **Office** > **Quickoffice**.

Quickoffice consists of the following:

- Quickword for viewing Microsoft Word documents
Quickword for viewing and editing Microsoft Word documents
- Quicksheet for viewing Microsoft Excel worksheets
Quicksheet for viewing and editing Microsoft Excel worksheets
- Quickpoint for viewing Microsoft PowerPoint presentations
Quickpoint for viewing and editing Microsoft PowerPoint presentations

Not all file formats or features are supported.

To purchase the editor version of Quickoffice, select **Updates and upgrades**.


Read Microsoft Word, Excel, and PowerPoint documents

With Quickoffice, you can view Microsoft Office documents, such as Word documents, Excel worksheets, or PowerPoint presentations.

Select **Menu** > **Applications** > **Office** > **Quickoffice**.

Open a file — Select the memory where the file is stored, browse to the correct folder, and select the file.

Sort files — Select **Options** > **Sort by**.

Send files to a compatible device — Select  and the sending method.

Edit a document

With Quickoffice, you can edit Microsoft Word documents.

Select **Menu** > **Applications** > **Office** > **Quickoffice**.

Create a new document — Select **New document**.

Insert text — Select an empty area, and enter text.

Edit text — Select a paragraph.

Format text — To edit the font and paragraph properties, select **Options > Format**.

Edit a workbook

With Quickoffice, you can edit Microsoft Excel workbooks.

Select **Menu > Applications > Office > Quickoffice**.

Create a new document — Select **New document**.

Edit a cell — Select the cell and **Options > Edit cell**. To insert a function, in the editing view, select **Options > Insert function**.

Edit a presentation

With Quickoffice, you can edit Microsoft PowerPoint presentations.

Select **Menu > Applications > Office > Quickoffice**.

Create a new document — Select **New document**.

Add a slide — Select **Options > Slide options > Insert new slide**.

Insert an image, textbox, shape, or other element — Select **Options > Insert**.

Edit text — Select a textbox and **Options > Edit textbox**.

Read PDF documents



With Adobe Reader, you can read PDF documents.

Select **Menu > Applications > Office > Adobe PDF**.

Open a file — Select the memory where the file is stored, browse to the correct folder, and select the file.

Make a calculation



Select **Menu > Applications > Office > Calculator**.

Office

1. Enter the first number of the calculation.
2. Select a function, such as add or subtract.
3. Enter the second number of the calculation.
4. Select =.

Save or retrieve the result of a calculation — Select **Options** > **Memory** > **Save** or **Recall**.

Write notes

About Notes

 Select **Menu** > **Applications** > **Notes**.

You can write notes, such as meeting memos, and save received plain text files (TXT files) to the Notes application.

Make a shopping list


Shopping lists on paper are easy to lose. Instead of writing them on paper, you can make your shopping lists with Notes. This way, you always have the list with you! You can also send the list to, for example, a family member.

Select **Menu** > **Applications** > **Notes**.

1. Select **Options** > **New note**.
2. Enter text in the note field.

Send the list — Open the note, and select **Options** > **Send** and the sending method.

Translate words from one language to another

 You can translate words from one language to another. Not all languages may be supported.

Select **Menu** > **Applications** > **Office** > **Dictionary**.

1. Enter text in the search field. Suggestions of words to translate are displayed.
2. Select the word from the list.

Change the source or target language — Select **Options** > **Languages** > **Source or Target**.

Download more languages from the internet — Select **Options** > **Languages** > **Download languages**.

English is preinstalled, and you can add two additional languages.

Open or create zip files

With Zip manager, you can open and extract files from zip files. You can also create new zip files, to store and compress files.

Select **Menu** > **Applications** > **Office** > **Zip**.

You can save the zip files in the device memory or on a memory card.

Connecting your device

Internet connections

Define how your device connects to the internet

Your device automatically checks for and connects to an available known network when a network connection is needed. Selection is based on the connection settings, unless there are application-specific settings applied.

Select **Menu** > **Settings and Connectivity** > **Settings**.

Automatically switch to a known wireless local area network (WLAN) connection when available — Select **Switch to Wi-Fi** > **Known Wi-Fis only**. You can also connect to WLANs manually using the WLAN wizard application.

Only use a WLAN connection — For WLAN connections when in your home network, select **Data use in home netw.** > **Wi-Fi network only**. For WLAN connections when outside your home network, select **Data use when roaming** > **Wi-Fi network only**.

Automatically use a packet data connection when in your home network — Select **Data use in home netw.** > **Automatic**. To set the device to request confirmation before connecting, select **Data use in home netw.** > **Always ask**.

Connecting your device


Request confirmation before using a packet data connection when outside your home network — Select **Data use when roaming** > **Always ask**. To set the device to automatically connect, select **Data use when roaming** > **Automatic**. Opening connections when abroad can raise data transfer costs substantially.


Wireless LAN

About WLAN connections

 Select **Menu** > **Settings and Connectivity** > **Wi-Fi**.

The WLAN wizard application helps you connect to a wireless local area network (WLAN) and manage your WLAN connections.

 **Important:** Use encryption to increase the security of your WLAN connection. Using encryption reduces the risk of others accessing your data.

 **Note:** Using WLAN may be restricted in some countries. For example, in France, you are only allowed to use WLAN indoors. For more information, contact your local authorities.

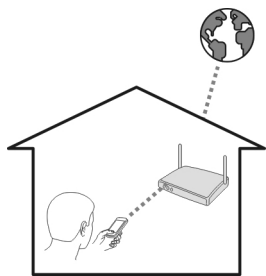
Connect to a WLAN at home

To help save data costs when at home, to access the internet using your device, connect to your home WLAN.

1. Select **Menu** > **Settings and Connectivity** > **Wi-Fi**.
2. Select and hold your home WLAN, and from the pop-up menu, select **Start web browsing**.

If your home WLAN is secured, enter the passcode.
If your home WLAN is hidden, select **Other (hidden netw.)**, and enter the network name (service set identifier, SSID).

Close the WLAN connection — Select and hold the connection, and from the pop-up menu, select **Disconnect Wi-Fi netw..**




Connect to a WLAN on the move

Connecting to a WLAN is a handy way of accessing the internet when not at home. Connect to public WLANs in public places, such as a library or internet café.

1. Select **Menu** > **Settings and Connectivity** > **Wi-Fi**.
2. Select and hold the desired WLAN connection, and from the pop-up menu, select **Start web browsing**.

Bluetooth

About Bluetooth connectivity


 Select **Menu** > **Settings and Connectivity** > **Bluetooth**.

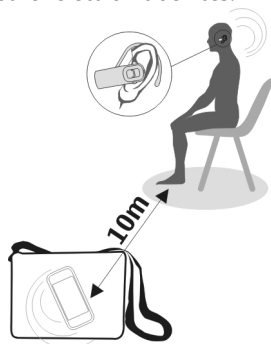
With Bluetooth connectivity, you can make a wireless connection to other compatible devices, such as mobile devices, computers, headsets, and car kits.

You can use the connection to send items from your device, transfer files from your compatible PC, and print files with a compatible printer.

Since devices with Bluetooth wireless technology communicate using radio waves, they do not need to be in direct line-of-sight. However, they must be within 10 metres (33 feet) of each other, although the connection may be subject to interference from obstructions such as walls or from other electronic devices.

When the device is locked, only connections to authorised devices are possible.

 **Note:** There may be restrictions on the use of Bluetooth technology in some countries. For example, in France, you are only allowed to use the Bluetooth technology of this product indoors. For more information, contact your local authorities.



Connect to a wireless headset

With a wireless headset you can answer a call even if your device is not directly at hand, and you can have your hands free, for example, to continue working at your computer during a call.

1. Select **Menu > Settings and Connectivity > Bluetooth > On**.
2. Switch the headset on.
3. To pair your device and the headset, open the **Paired devices** tab.
4. Select the headset.

If the headset is not displayed in the list, to search for it, select **Options > New paired device**.

5. You may need to enter a passcode. For details, see the user guide of the headset.

Send a picture or other content to another device

You can use Bluetooth to send pictures, videos, business cards, calendar entries, and other content to your friend's compatible devices and to your computer.

You can have several Bluetooth connections active at a time. For example, if you are connected to a compatible headset, you can also send files to another compatible device at the same time.

1. Select and hold the item, for example, a picture. From the pop-up menu, select **Send > Via Bluetooth**.
2. Select the device to connect to. If the desired device is not displayed, to search for it, select **More devices**. When searching, Bluetooth devices within range are displayed.
3. If the other device requires a passcode, enter the passcode. The passcode, which you can define yourself, must be entered in both devices. The passcode in some devices is fixed. For details, see the user guide of the device.

The passcode is valid only for the current connection.

4. If you connect to a device frequently, to set it as authorised, accept the authorisation query **Authorize device to make connections automatically?** when pairing. When a device is authorised, you do not have to enter the passcode every time.

Connect to a car kit using remote SIM mode

With remote SIM mode, a compatible car kit can use the SIM card of your device.

Select **Menu** > **Settings and Connectivity** > **Bluetooth**.

Before remote SIM mode can be activated, your device and accessory must be paired. Initiate the pairing from the car kit accessory.

1. To activate Bluetooth, select **Bluetooth** > **On**.
2. To activate remote SIM mode in your device, select **Remote SIM mode** > **On**.
3. Activate Bluetooth in the car kit accessory.

When remote SIM mode is activated, **Remote SIM mode** is displayed in the home screen. The connection to the wireless network is closed, and you cannot use SIM card services or features that require cellular network coverage.

To make or receive calls when in remote SIM mode, you need to have a compatible accessory, such as a car kit, connected to your device.

Your device will only allow emergency calls in this mode.

Deactivate remote SIM mode — Press the power key, and select **Exit remote SIM mode**.

Protect your device

When Bluetooth is activated in your device, you can control who can find and connect to your device.

Select **Menu** > **Settings and Connectivity** > **Bluetooth**.

Prevent others from detecting your device — Select **My phone's visibility** > **Hidden**. When your device is hidden, others cannot detect it. However, paired devices can still connect to your device.

Deactivate Bluetooth — Select **Bluetooth** > **Off**.


Do not pair with or accept connection requests from an unknown device. This helps to protect your device from harmful content.

USB data cable

Copy a picture or other content between your device and a computer

You can use a USB data cable to copy pictures, videos, music, and other content between your device and a computer.


Connecting your device

1. To make sure that Media transfer is set as the USB mode, select **Menu > Settings and Connectivity > USB > Media transfer**.
2. Use a compatible USB  data cable to connect your device to a computer. The device is displayed as a portable device on your computer. If Media transfer mode does not work on your computer, use Mass storage mode instead.
3. Use the file manager of the computer to copy the content.


Change the USB mode

For best results when copying content or synchronising your device with your computer, activate the appropriate USB mode when using a USB data cable to connect to various devices.

Select **Menu > Settings and Connectivity > USB** and from the following:



-  **Nokia Ovi Suite** — Connect your device to a compatible computer that has Nokia Ovi Suite installed. In this mode, you can synchronise your device with Ovi Suite and use other Ovi Suite features.

This mode is activated automatically when you open the Ovi Suite application.


-  **Mass storage** — Connect your device to a compatible computer that does not have Ovi Suite installed. Your device is recognised as a USB flash memory. You can also connect your device to other devices, such as a home or car stereo, to which you can connect a USB drive.

While connected to a computer in this mode, you may not be able to use some of the device applications.

The memory card in your device cannot be accessed by the other device.

-  **Media transfer** — Connect your device to a compatible computer that does not have Ovi Suite installed. Music protected by digital rights management (DRM) must be transferred in this mode. Some home entertainment systems and printers can also be used in this mode.
-  **Conn. PC to net** — Connect your device to a compatible computer, and use the device as a wireless modem. The computer connects to the internet automatically.





Tip: When the USB cable is connected, you can change the USB mode in most views. In the top right corner, select  > **USB**.

Close a network connection

If several applications are using an internet connection, you can use the Connection manager application to close some or all network connections.

Select **Menu** > **Settings** and **Connectivity** > **Connection mgr..**

In the active data connections view, you can see your current network connections.

 indicates a packet data connection, and  indicates a wireless local area network (WLAN) connection.

To close a connection, select and hold the connection, and from the pop-up menu, select **Disconnect**.

View details for a connection — Select and hold the connection, and from the pop-up menu, select **Details**. Details, such as the amount of transferred data and connection duration, are displayed.



Tip: In most views, to open the Connection manager application, select the notification area in the top right corner and  > **Connection mgr..**

Mange your device

Keep your device software and applications up to date

About device software and application updates

With device software updates and application updates, you can get new features and enhanced functions for your device. Updating the software may also improve your device performance.

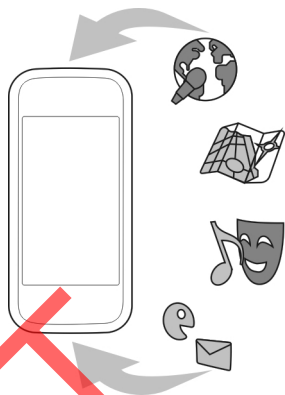
Manage your device

It is recommended that you back up your personal data before updating your device software.




Warning: If you install a software update, you cannot use the device, even to make emergency calls, until the installation is completed and the device is restarted.


After you update your device software or applications, the instructions in the user guide may no longer be up to date.



Update device software and applications using your device

 You can check if there are updates available for your device software or for individual applications, and then download and install them to your device (network service). You can also set your device to automatically check for updates and notify you when important or recommended updates are available.

Select **Menu > Applications > Tools > SW update**.

If there are available updates, select which updates to download and install, and select .

Set your device to automatically check for updates — Select **Options > Settings > Auto-check for updates**.

Update device software using your PC

You can use the Nokia Software Updater PC application to update your device software. To update your device software, you need a compatible PC, a high-speed internet connection, and a compatible USB data cable to connect your device to the PC.

To get more information and to download the Nokia Software Updater application, go to www.nokia.com/softwareupdate, or in Latin America, www.nokia-latinoamerica.com/nsu.

Manage files

About File manager

 Select Menu > Applications > Office > File mgr..

With File manager, you can browse, manage, and open files on your device. You can also view and manage files on a compatible inserted memory card.

View the files stored in your device

Select Menu > Applications > Office > File mgr. and the desired memory. The folders on the root of the memory are displayed.

Organise files

You can use the File manager application to delete, move, copy, or create new files and folders. If you organise your files into their own folders, it might help you find the files in future.

Select Menu > Applications > Office > File mgr..

Create a new folder — In the folder where you want to create a sub-folder, select Options > Organize > New folder.


Copy or move a file to a folder — Select and hold the file, and from the pop-up menu, select the appropriate option.

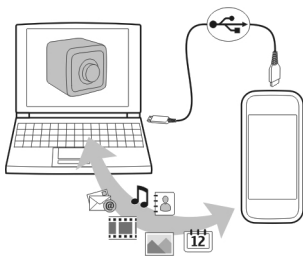
Back up files

Want to make sure that you will not lose any important files? You can back up the device memory to a compatible computer or memory card.

Select Menu > Applications > Office > File mgr. and Backup.

It is recommended that you back up the device memory regularly to a compatible computer or memory card.

 **Tip:** If you have DRM-protected content, use Nokia Ovi Suite to back up both the licences and the content to your computer.



Password protect your memory card

Want to protect the memory card against unauthorised use? You can set a password to protect the data.

1. Select **Menu > Applications > Office > File mgr..**
2. Select and hold the memory card.
3. From the pop-up menu, select **Set password**, and enter a password.

Keep the password secret and in a safe place, separate from the memory card.

Format a memory card

Want to delete all content from your memory card? When you format a memory card, all the data on it is deleted.

1. Select **Menu > Applications > Office > File mgr..**
2. Select and hold the memory card, and from the pop-up menu, select **Format**.

Increase available memory for more content

Do you need to increase the available device memory, so you can install more applications, and add more content?

Transfer data to a compatible memory card (if available) or to a compatible computer.

You can also remove the following if no longer needed:

- Text, multimedia, and mail messages
- Contact entries and details
- Applications
- Installation files (.sis or .sisx) for installed applications. Back up the files to a compatible computer.
- Pictures and videos in Photos. Back up the files to a compatible computer.



Tip: If expired trial or demo applications are installed, remove them.

Manage applications

About Application manager

 Select Menu > Settings and Application mgr..

With Application manager you can view details of installed applications, remove applications, and define installation settings.

You can install the following types of applications:

- Java™ ME applications that have the .jad or .jar file extension
- Applications, compatible with the Symbian operating system, that have the .sis or .sisx file extension
- Widgets that have the .wgz file extension

Only install applications that are compatible with your device.

Remove an application from your device

You can remove installed applications that you no longer need or use, to increase the amount of available memory.

Select Menu > Settings and Application mgr..

1. Select **Installed apps**.
2. Select and hold the application to remove, and from the pop-up menu, select **Uninstall**.

If you remove an application, you can only reinstall it if you have the original installation file or a full backup of the removed application. You may not be able to open files created with a removed application.

If an installed application depends on a removed application, the installed application may stop working. For details, see the user documentation of the installed application.

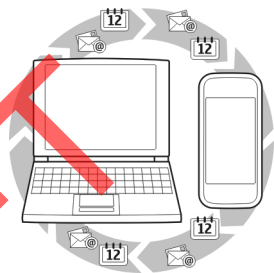
After you install applications to a compatible memory card, installation files (.sis, .sisx) remain in the device memory. The files may use large amounts of memory and prevent you from storing other files. To maintain sufficient memory, use Nokia Ovi Suite to back up installation files to a compatible PC, then use the file manager to remove the installation files from the device memory. If the .sis file is a message attachment, delete the message from the Messaging inbox.

Synchronise content

About Sync

 Select Menu > Settings and Connectivity > Data transfer > Sync.

With the Sync application, you can synchronise your contacts, notes, and other content between your device and a remote server. After the synchronisation, you have a back-up of your important data on the server.



Synchronise content between your device and a remote server

Would you like to have your calendar, notes, and other content backed up and at hand, whether you are sitting by your computer or on the go with your mobile device? With the Sync application, you can synchronise the important content between your device and a remote server.

Select Menu > Settings and Connectivity > Data transfer > Sync.

You may receive synchronisation settings as a configuration message from your service provider. The synchronisation settings are saved as a synchronisation profile. When you open the application, the default or previously used synchronisation profile is displayed.




Include or exclude content types — Select a content type.

Synchronise data — Select Options > Synchronize.

Copy contacts or pictures between devices

With the Phone switch application, you can use Bluetooth to synchronise and copy content between two compatible Nokia devices, free of charge.

Select **Menu** > **Settings** > **Connectivity** > **Data transfer** > **Phone switch**.

1. Select from the following:
 -  — Synchronise content between two devices.
 -  — Copy content from another device.
 -  — Copy content to another device.
2. Select the device you want to connect to, and pair the devices. Bluetooth needs to be activated.
3. If the other device requires a passcode, enter the passcode. The passcode, which you can define yourself, must be entered in both devices. The passcode in some devices is fixed. For details, see the user guide of the device.
The passcode is valid only for the current connection.
4. Select the content and **OK**.




Tip: If you save the details, it is easier to later exchange the same content with the same device.

Protect your device

Set your device to lock automatically

Want to protect your device against unauthorised use? Define a lock code, and set your device to lock itself automatically when you're not using it.

1. Select **Menu** > **Settings and Phone** > **Phone mgmt.** > **Security settings** > **Phone and SIM card**.
2. Select **Lock code**, and enter a lock code. A minimum of 4 characters is required, and numbers, symbols, and upper and lower case letters can be used.
Keep the lock code secret and in a safe place separate from your device. If you forget the lock code and your device is locked, your device will require service. Additional charges may apply, and all the personal data in your device may be deleted. For more information, contact a Nokia Care point or your device dealer.
3. Select **Phone autolock period**, and define the length of time after which the device is locked automatically.

Lock your device manually — In the home screen, press , and select **Lock phone**.

Unlock your device — Select **Unlock**, enter the lock code, and select **OK**.

Lock your device remotely

Forgot your device at work and want to lock it to prevent unauthorised use? You can lock your device remotely using a predefined text message. You can also lock the memory card remotely.

Enable remote locking

1. Select **Menu > Settings and Phone > Phone mgmt. > Security settings > Phone and SIM card > Remote phone locking > Enabled.**
2. Enter the text message content. It can be 5-20 characters, and both upper and lower case letters can be used.
3. Enter the same text again to verify it.
4. Enter the lock code.

Send the lock message — To lock the device remotely, write the predefined text, and send it to your device as a text message.

To unlock your device, you need the lock code.

Find more help

Support

When you want to learn more about how to use your product or you are unsure how your device should function, go to www.nokia.com/support, or using a mobile device, nokia.mobi/support. You can also select **Menu > Applications > User guide** in your device.

If this does not resolve your issue, do one of the following:

- Reboot your device. Press and hold **⓪** for about 8 seconds. The device vibrates three times and switches off. To switch your device on again, press **⓪**.
- Restore the original factory settings.
- Update your device software.

If your issue remains unsolved, contact Nokia for repair options. Go to www.nokia.com/repair, or in Latin America, www.nokia-latinoamerica.com/centrosdeservicio. Before sending your device for repair, always back up the data in your device.

Accessibility solutions

Nokia is committed to making mobile phones easy to use for all individuals, including those with disabilities. For more information, visit the Nokia website at www.nokiaaccessibility.com.

Troubleshooting

If your device stops responding

Restart your device. Press and hold **⏻** for about 8 seconds. The device vibrates three times and switches off. To switch your device on again, press **⏻**.

No content is deleted when you restart your device.

Restore original settings

If your device is not working properly, you can reset some settings to their original values.

1. End all active calls and connections.
2. Select **Menu > Settings and Phone > Phone mgmt. > Factory settings > Restore**.
3. Enter the lock code.

This does not affect documents or files stored on your device.

After restoring the original settings, the device switches off, and then on again. This may take longer than usual.

What to do when the memory is full?

Remove unneeded applications and content from your device memory. If **Not enough memory to perform operation. Delete some data first. or Memory low. Delete some data from phone memory.** is displayed when you are deleting several items at the same time, delete items one by one, beginning with the smallest items. Move content that you want to keep to a compatible memory card (if available) or to a compatible computer. If possible, install applications to the memory card, rather than the device memory.

Message indicator blinking

Q: Why is the message indicator  blinking in the home screen?

A: The maximum number of messages are stored on your device. Delete some messages. The number of messages that can be stored on the SIM card is considerably lower than the number that can be stored in the device memory. You can use Nokia Ovi Suite to save messages to a compatible computer.

A contact appears twice in the contacts list

Q: I have a contact twice in my contacts list. How can I remove the extra contact?

A: You can merge two contacts into one. Select **Options** > **Merge contacts**, select the contacts to merge, and select **Merge**.

Unreadable characters while browsing the web

If unreadable characters are displayed, select **Menu** > **Internet** and **Options** > **Settings** > **Page** > **Default encoding** and the correct encoding for the character set of the language.

Prepare your device for recycling

If you buy a new device, or otherwise want to dispose of your device, Nokia recommends that you recycle your device. Beforehand, remove all personal information and content from your device.

Remove all content and restore settings to the default values

1. Back up the content you want to keep to a compatible memory card (if available) or to a compatible computer.
2. Close all active connections and calls.
3. Select **Menu** > **Settings and Phone** > **Phone mgmt.** > **Factory settings** > **Delete data and restore**.
4. Your device switches off and then on again. Check carefully that all your personal content, such as contacts, pictures, music, videos, notes, messages,

mails, presentations, games and other installed applications have been removed.

Content and information stored on the memory card or SIM card is not removed.

Green tips



Save energy

You do not need to charge your battery so often if you do the following (if available for your device):

- Close applications and data connections, for example, your Bluetooth connection, when not in use.
- Decrease the brightness of the screen.
- Set your device to enter power saver mode after the minimum period of inactivity, if available in your device.
- Deactivate unnecessary sounds, such as key tones.

Recycle

All materials of this device can be recovered as materials and energy. For information on how to recycle your old Nokia products, go to www.nokia.com/werecycle, or using a mobile device, nokia.mobi/werecycle.

Recycle packaging and user guides at your local recycling scheme.

For more information on the environmental attributes of your device, go to www.nokia.com/ecodeclaration.

Product and safety information

Network services and costs

Your device is approved for use on the WCDMA 850, 1900, 2100 and GSM/EDGE 850, 900, 1800, 1900 MHz networks. To use the device, you need a subscription with a service provider.

Using network services and downloading content to your device may result in data traffic costs. Some product features require support from the network, and you may need to subscribe to them.

Take care of your device

Handle your device, battery, charger and accessories with care. The following suggestions help you protect your warranty coverage.

- Keep the device dry. Precipitation, humidity, and all types of liquids or moisture can contain minerals that corrode electronic circuits.
- Do not use or store the device in dusty or dirty areas. Moving parts and electronic components can be damaged.
- Do not store the device in high temperatures. High temperatures can shorten the life of the device, damage the battery, and warp or melt plastics.
- Do not store the device in cold temperatures. When the device warms to its normal temperature, moisture can form inside the device and damage electronic circuits.
- Do not attempt to open the device other than as instructed in the user guide.
- Unauthorised modifications may damage the device and violate regulations governing radio devices.
- Do not drop, knock, or shake the device. Rough handling can break internal circuit boards and mechanics.
- Only use a soft, clean, dry cloth to clean the surface of the device.
- Do not paint the device. Paint can clog the moving parts and prevent proper operation.
- Keep your device away from magnets or magnetic fields.

- To keep your important data safe, store it in at least two separate places, such as your device, memory card, or computer, or write down important information.

During extended operation, the device may feel warm. In most cases, this condition is normal. If you suspect the device is not working properly, take it to the nearest authorised service facility.

Recycle

Always return your used electronic products, batteries, and packaging materials to dedicated collection points. This way you help prevent uncontrolled waste disposal and promote the recycling of materials. Check product environmental information and how to recycle your Nokia products at www.nokia.com/wecycle, or with a mobile device, nokia.mobi/wecycle.

About Digital Rights Management

When using this device, obey all laws and respect local customs, privacy and legitimate rights of others, including copyrights. Copyright protection may prevent you from copying, modifying, or transferring images, music, and other content.

Content owners may use different types of digital rights management (DRM) technologies to protect their intellectual property, including copyrights. This device uses various types of DRM software to access DRM-protected content. With this device you can access content protected with WM DRM 10 and OMA DRM 2.0. If certain DRM software fails to protect the content, content owners may ask that such DRM software's ability to access new DRM-protected content be revoked. Revocation may also prevent renewal of such DRM-protected content already in your device. Revocation of such DRM software does not affect the use of content protected with other types of DRM or the use of non-DRM-protected content.

Digital rights management (DRM) protected content comes with an associated licence that defines your rights to use the content.

If your device has OMA DRM-protected content, to back up both the licences and the content, use the backup feature of Nokia Ovi Suite.

Other transfer methods may not transfer the licences which need to be restored with the content for you to be able to continue the use of OMA DRM-protected content after the device memory is formatted. You may also need to restore the licences in case the files on your device get corrupted.

If your device has WMDRM-protected content, both the licences and the content will be lost if the device memory is formatted. You may also lose the licences and

Product and safety information

the content if the files on your device get corrupted. Losing the licences or the content may limit your ability to use the same content on your device again. For more information, contact your service provider.

Some licences may be connected to a specific SIM card, and the protected content can be accessed only if the SIM card is inserted in the device.

Nokia battery authentication guidelines

Always use original Nokia batteries for your safety. To help ensure that you are getting an original Nokia battery, purchase it from a Nokia authorised service centre or dealer, and check the hologram label.

Authenticate hologram

1. Look at the hologram. You should see the Nokia connecting hands symbol from one angle and the Nokia Original Accessories logo from the other angle.
2. Angle the hologram left, right, down, and up. You should see 1, 2, 3 and 4 dots on each side respectively.

However, this is not a total assurance of the authenticity of the battery. If you cannot confirm authenticity or if you have any reason to believe that your Nokia battery with the hologram on the label is not an authentic Nokia battery, stop using the battery and take it to the nearest Nokia authorised service centre or dealer.

For additional information, refer to the warranty and reference leaflet included with your Nokia device.



Batteries and chargers

Battery and charger information

This device has an internal, nonremovable, rechargeable battery. Do not attempt to remove the battery from the device as you may damage the device. Take the device to the nearest authorised service facility for replacement of the battery.

This device is intended for use when supplied with power from the following chargers: AC-10U. The exact charger model number may vary depending on the

type of plug. The plug variant is identified by one of the following: E, X, AR, U, A, C, K, or B.

Only replace the battery with a battery that is compliant with the IEEE-std-1725-200x standard.

Use of other batteries or chargers may present a risk of fire, explosion, leakage, or other hazard. Avoid dropping the phone or battery.

If the phone or battery is dropped, especially on a hard surface, and the user suspects damage, take it to a service center for inspection.

Battery safety



Note: The battery in your device is non-removable, so refer to the battery-related statements as applicable to your device.

When you unplug a charger or an accessory, hold and pull the plug, not the cord.

When your charger is not in use, unplug it from the electrical plug and the device. Do not leave a fully charged battery connected to a charger, as overcharging may shorten the battery's lifetime. If left unused, a fully charged battery will lose its charge over time.

Always keep the battery between 15°C and 25°C (59°F and 77°F). Extreme temperatures reduce the capacity and lifetime of the battery. A device with a hot or cold battery may not work temporarily.

Accidental short-circuiting can happen when a metallic object touches the metal strips on the battery. Short-circuiting may damage the battery or the connecting object.

Do not dispose of batteries in a fire as they may explode. Dispose of batteries according to local regulations. Recycle when possible. Do not dispose as household waste.

Do not dismantle, cut, open, crush, bend, puncture, or shred cells or batteries. If a battery leaks, do not let battery liquid touch skin or eyes. If this happens, immediately flush the affected areas with water, or seek medical help.

Do not modify, remanufacture, attempt to insert foreign objects into the battery, or immerse or expose it to water or other liquids. Batteries may explode if damaged.

Use the battery and charger for their intended purposes only. Improper use, or use of unapproved batteries or chargers may present a risk of fire, explosion, or other hazard, and may invalidate any approval or warranty. If you believe the battery or

Product and safety information


charger is damaged, take it to a service centre for inspection before continuing to use it. Never use a damaged battery or charger. Only use the charger indoors.

Battery usage by children should be supervised.

Additional safety information

Emergency calls

Make an emergency call

1. Ensure the device is switched on.
2. Check for adequate signal strength. You may also need to do the following:
 - Insert a SIM card.
 - Remove call restrictions you have activated for your device, such as call barring, fixed dialling, or closed user group.
 - Ensure your device is not in an offline or flight profile.
 - If the device screen and keys are locked, unlock them.
3. To clear the display, press the menu key as many times as needed.
4. Select **Call**.
5. Enter the official emergency number for your present location.
6. Select .
7. Give the necessary information as accurately as possible. Do not end the call until given permission to do so.



Important: Activate both cellular and internet calls, if your device supports internet calls. The device may attempt to make emergency calls both through cellular networks and through your internet call service provider. Connections in all conditions cannot be guaranteed. Never rely solely on any wireless device for essential communications like medical emergencies.

Small children

Your device and its accessories are not toys. They may contain small parts. Keep them out of the reach of small children.

Medical devices

Operation of radio transmitting equipment, including wireless phones, may interfere with the function of inadequately protected medical devices. Consult a physician or the manufacturer of the medical device to determine whether they are adequately shielded from external RF energy. Switch off your device when regulations posted instruct you to do so, for example, in hospitals.

Implanted medical devices

Manufacturers of medical devices recommend a minimum separation of 15.3 centimetres (6 inches) between a wireless device and an implanted medical device, such as a pacemaker or implanted cardioverter defibrillator, to avoid potential interference with the medical device. Persons who have such devices should:

- Always keep the wireless device more than 15.3 centimetres (6 inches) from the medical device.
- Not carry the wireless device in a breast pocket.
- Hold the wireless device to the ear opposite the medical device.
- Turn the wireless device off if there is any reason to suspect that interference is taking place.
- Follow the manufacturer directions for the implanted medical device.

If you have any questions about using your wireless device with an implanted medical device, consult your health care provider.

Hearing



Warning: When you use the headset, your ability to hear outside sounds may be affected. Do not use the headset where it can endanger your safety.

Some wireless devices may interfere with some hearing aids.

Your mobile device complies with FCC rules governing hearing aid compatibility. These rules require an M3 microphone or higher. The M value of your device microphone is marked on the device sales package. To determine the M-rating of your hearing aid and compatibility with this device, consult your hearing health professional. For more information about accessibility, see www.nokiaaccessibility.com.

Product and safety information

To use a telecoil-equipped hearing aid with this device, activate the hearing aid (T switch) and the device telecoil. The sound quality depends on the type of your hearing aid.

Nickel



Note: The surface of this device does not contain nickel in the platings. The surface of this device contains stainless steel.

The surface of this device is nickel-free.

Protect your device from harmful content

Your device may be exposed to viruses and other harmful content. Take the following precautions:

- Be cautious when opening messages. They may contain malicious software or otherwise be harmful to your device or computer.
- Be cautious when accepting connectivity requests, browsing the internet, or downloading content. Do not accept Bluetooth connections from sources you do not trust.
- Only install and use services and software from sources that you trust and that offer adequate security and protection.
- Install antivirus and other security software on your device and any connected computer. Only use one antivirus application at a time. Using more may affect performance and operation of the device and/or computer.
- If you access preinstalled bookmarks and links to third party internet sites, take the appropriate precautions. Nokia does not endorse or assume liability for such sites.

Operating environment

This device meets RF exposure guidelines in the normal use position at the ear or at least 1.5 centimetres (5/8 inch) away from the body. Any carry case, belt clip, or holder for body-worn operation should not contain metal and should position the device the above-stated distance from your body.

To send data files or messages requires a quality connection to the network. Data files or messages may be delayed until such a connection is available. Follow the separation distance instructions until the transmission is completed.

Vehicles

Radio signals may affect improperly installed or inadequately shielded electronic systems in motor vehicles such as electronic fuel injection, electronic antilock braking, electronic speed control, and air bag systems. For more information, check with the manufacturer of your vehicle or its equipment.

Only qualified personnel should install the device in a vehicle. Faulty installation or service may be dangerous and may invalidate your warranty. Check regularly that all wireless device equipment in your vehicle is mounted and operating properly. Do not store or carry flammable liquids, gases, or explosive materials in the same compartment as the device, its parts, or accessories. Remember that air bags inflate with great force. Do not place your device or accessories in the air bag deployment area.

Switch off your device before boarding an aircraft. The use of wireless devices in an aircraft may be dangerous to the operation of the aircraft and may be illegal.

Potentially explosive environments

Switch off your device in any area with a potentially explosive atmosphere. Obey all posted instructions. Sparks in such areas could cause an explosion or fire resulting in bodily injury or death. Switch off the device at refuelling points such as near gas pumps at service stations. Observe restrictions in fuel depots, storage, and distribution areas; chemical plants; or where blasting operations are in progress. Areas with a potentially explosive atmosphere are often, but not always, clearly marked. They include areas where you would be advised to turn off your vehicle engine, below deck on boats, chemical transfer or storage facilities and where the air contains chemicals or particles such as grain, dust, or metal powders. You should check with the manufacturers of vehicles using liquefied petroleum gas (such as propane or butane) to determine if this device can be safely used in their vicinity.

Certification information (SAR)

This mobile device meets guidelines for exposure to radio waves.

Your mobile device is a radio transmitter and receiver. It is designed not to exceed the limits for exposure to radio waves recommended by international guidelines. These guidelines were developed by the independent scientific organisation ICNIRP and include safety margins designed to assure the protection of all persons, regardless of age and health.

Product and safety information

The exposure guidelines for mobile devices employ a unit of measurement known as the Specific Absorption Rate or SAR. The SAR limit stated in the ICNIRP guidelines is 2.0 watts/kilogram (W/kg) averaged over 10 grams of tissue. Tests for SAR are conducted using standard operating positions with the device transmitting at its highest certified power level in all tested frequency bands. The actual SAR level of an operating device can be below the maximum value because the device is designed to use only the power required to reach the network. That amount changes depending on a number of factors such as how close you are to a network base station.

The highest SAR value under the ICNIRP guidelines for use of the device at the ear is 0.61 W/kg.

Use of device accessories may result in different SAR values. SAR values may vary depending on national reporting and testing requirements and the network band. Additional SAR information may be provided under product information at www.nokia.com.

Your mobile device is also designed to meet the requirements for exposure to radio waves established by the Federal Communications Commission (USA) and Industry Canada. These requirements set a SAR limit of 1.6 W/kg averaged over one gram of tissue. The highest SAR value reported under this standard during product certification for use at the ear is 0.92 W/kg and when properly worn on the body is 1.53 W/kg.

DECLARATION OF CONFORMITY

CE 0434

Hereby, NOKIA CORPORATION declares that this RM-659 product is in compliance with the essential requirements and other relevant provisions of Directive 1999/5/EC. A copy of the Declaration of Conformity can be found at http://www.nokia.com/phones/declaration_of_conformity/.

© 2010 Nokia. All rights reserved.

Nokia, Nokia Connecting People, Nseries, Nokia Original Accessories logo, and Ovi are trademarks or registered trademarks of Nokia Corporation. Nokia tune is a sound mark of Nokia Corporation. Other product and company names mentioned herein may be trademarks or tradenames of their respective owners.

Reproduction, transfer, distribution, or storage of part or all of the contents in this document in any form without the prior written permission of Nokia is prohibited. Nokia operates a policy of continuous development. Nokia reserves the right to make changes and improvements to any of the products described in this document without prior notice.

'Dolby' is a trademark of Dolby Laboratories.

Manufactured under license from Dolby Laboratories.



POWERED Java and all Java-based marks are trademarks or registered trademarks of Sun Microsystems, Inc.

This product is licensed under the MPEG-4 Visual Patent Portfolio License (i) for personal and noncommercial use in connection with information which has been encoded in compliance with the MPEG-4 Visual Standard by a consumer engaged in a personal and noncommercial activity and (ii) for use in connection with MPEG-4 video provided by a licensed video provider. No license is granted or shall be implied for any other use. Additional information, including that related to promotional, internal, and commercial uses, may be obtained from MPEG LA, LLC. See <http://www.mpegla.com>.

To the maximum extent permitted by applicable law, under no circumstances shall Nokia or any of its licensors be responsible for any loss of data or income or any special, incidental, consequential or indirect damages howsoever caused.

The contents of this document are provided "as is". Except as required by applicable law, no warranties of any kind, either express or implied, including, but not limited to, the implied warranties of merchantability and fitness for a particular purpose, are made in relation to the accuracy, reliability or contents of this document. Nokia reserves the right to revise this document or withdraw it at any time without prior notice.

Reverse engineering of software in the device is prohibited to the extent permitted by applicable law. Insofar as this user guide contains any limitations on Nokia's representations, warranties, damages and liabilities, such limitations shall likewise limit any representations, warranties, damages and liabilities of Nokia's licensors.

The availability of products, features, applications and services may vary by region. For more information, contact your Nokia dealer or your service provider. This device may contain commodities, technology or software subject to export laws and regulations from the US and other countries. Diversion contrary to law is prohibited.

Nokia does not provide a warranty for or take any responsibility for the functionality, content, or end-user support of third-party applications provided with your device. By using an application, you acknowledge that the application is provided as is. Nokia does not make any representations, provide a warranty, or take any responsibility for the functionality, content, or end-user support of third-party applications provided with your device.

FCC/INDUSTRY CANADA NOTICE

Your device may cause TV or radio interference (for example, when using a telephone in close proximity to receiving equipment). The FCC or Industry Canada can require you to stop using your telephone if such interference cannot be

eliminated. If you require assistance, contact your local service facility. This device complies with part 15 of the FCC rules. Operation is subject to the following two conditions: (1) This device may not cause harmful interference, and (2) this device must accept any interference received, including interference that may cause undesired operation. Any changes or modifications not expressly approved by Nokia could void the user's authority to operate this equipment.

Some operations and features are SIM card and/or network dependent, MMS dependent, or dependent on the compatibility of devices and the content formats supported. Some services are subject to a separate charge.

/Issue FCC Review EN

DRAFT

Index

A

- accessories 33
- alarm clock 74
- anniversary entries 77
- antennas 8
- applications 26, 32, 88, 91
- audio messages 42, 43

B

- backing up data 89
- barring calls 39
- battery 12
 - charging 13, 14
- birthday entries 77
- blogs 49
- Bluetooth 83, 84, 85
- bookmarks 49
- browser
 - See *Internet*
- business cards 84

C

- cable connection 85, 86
- cache memory 49
- Calculator 79
- Calendar 76, 77
- calendar 76
- calls 21, 38
 - conference 34
 - diverting 39
 - internet calls 36, 37
 - last dialled 37
 - making 20, 33, 34
 - restricting 40
- Camera 50
 - location information 51

- recording videos 52
- sending pictures 53
- taking pictures 50, 51, 52
- charging the battery 13, 14
- chat services (IM) 45, 46
- clock 74, 75
- connectivity 87
- contacts
 - adding 21
 - copying 15, 92
 - editing 21
 - saving 21
 - searching 34
 - sending 84
 - synchronising 92
 - troubleshooting 96
 - widgets 25, 32
- copying content 15, 56, 59, 85, 92
- copyright protection 59

D

- data connections 87
 - Bluetooth 83
- date and time 75
- device
 - rebooting 14, 95
 - setup 16
 - switching on/off 14, 95
- dictionary 80
- diverting calls 39
- DRM (digital rights management) 59

E

- e-mail
 - See *mail*

F

- factory settings, restoring 95
- feeds, news 49
- file management 89, 90
- FM radio 61, 62
- FM transmitter 60

H

- headset 9
- hearing aids 33
- help 16
- home screen 20, 24, 25, 30, 31, 32, 48

I

- IM (instant messaging) 45, 46

images

See pictures

- inbox, messages 44
- indicators 96
- installing applications 91
- Internet 48

- bookmarks 49
- browsing pages 49
- cache memory 49

- internet calls 36, 37
- internet connection 81

J

- Java applications 91

K

- keyguard 9
- keys and parts 6, 7, 8

L

- language settings 45
- licences 59
- location information 51

- lock code 93

locking

- device 93
- keys 9
- remotely 94
- screen 9

- Log 21, 38

- loudspeaker 9

M

- mail 46, 48

- attachments 47
- creating 47
- mailbox 47
- reading and replying to 47
- sending 47
- setup 47
- widgets 48

mailbox

- voice 38

Maps 63

- browsing 63
- changing views 65
- compass 65
- display elements 64, 71
- downloading maps 65
- driving routes 70
- Favourites 68
- finding locations 67
- location details 67
- navigating 70, 72
- organising places 68
- organising routes 68
- planning routes 72
- positioning 66
- saving places 68
- saving routes 68
- sending places 69
- synchronising 69
- traffic information 71

voice guidance 70
 walking routes 72
meeting entries 76
memory 89, 96
 clearing 90, 95
memory card 11, 90
menus 26, 32
Message reader 45
messages 42, 44, 96
 audio 43
 conversations 44
 sending 22, 43
MMS (multimedia message service) 22, 43
movies 55
multimedia messages 22, 42, 43
music 57, 59, 60
 playlists 58

N

news feeds 49
Nokia account 15, 27
Nokia Messaging 48
Nokia support information 94
Notes 80

O

office applications 78, 79
Ovi 27
Ovi account
 See Nokia account
Ovi by Nokia 26
Ovi Contacts 27
Ovi Files 27
Ovi Mail 28
Ovi Maps 28
Ovi Music 28
Ovi Store 28
Ovi Suite 17

P

personalising your device 23, 24, 25, 29, 30, 31
Phone switch 15, 92
Photo editor 54
photographs
 See pictures
pictures
 copying 15, 85, 92
 editing 54
 location information 51
 printing 55
 sending 53, 84
 taking 50, 51, 52
 viewing 53
playlists 58
powering device on/off 14, 95
printing 55
profiles 22, 23, 29
 creating 23, 30
 personalising 23, 29, 30

Q

Quickoffice 78, 79

R

radio 61, 62
RDS (radio data system) 61, 62
rebooting 14, 95
recording
 calls 37
 sounds 59
 videos 52
remote lock 93
remote locking 94
restoring settings 95
ringing tones 22, 23, 29, 38

S

searching

- contacts 34
- radio stations 61

security code 93

sensor settings 38

settings

- access points 81
- accessories 33
- language 45
- restoring 95

shortcuts 20, 25, 31, 32

silent profile 23, 29

SIM card

- inserting 9
- removing 9

slideshow 55

SMS (short message service) 22, 43

software 91

software updates 87, 88

speakerphone 9

speed dialling 35

support 16, 94

switching device on/off 14, 95

synchronisation 92

T

taking pictures

See *Camera*

tasks 76

text messages 22, 42, 43

themes 23, 30

time and date 75

tones

- personalising 23, 29

touch screen 8, 18

transferring content 15, 56, 59, 85, 92

troubleshooting 96

TTY 33

turning device on/off 14, 95

TV

- watching programmes 57

U

updates

- applications 87, 88
- device software 87, 88

USB charging 13

USB connection 85, 86

user guide 16

V

videos 56

- copying 15, 56, 85, 92
- editing 54, 55
- location information 51
- playing 56
- recording 52
- sending 84
- sharing 40, 41, 42
- watching 53

voice calls

See *calls*

voice commands 35

volume control 9

W

wallpaper 24, 31

web

See *Internet*

web browser 96

web connection 81

web feeds 49

widgets 25, 32, 48, 57

WLAN (wireless local area network) 82, 83

world clock 75

Z**Zip manager 81****DRAFT**