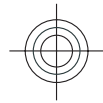
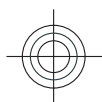


Nokia C7-00 User Guide

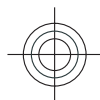
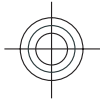


9222032
Issue 1





Contents		Personalise your tones	13
		Change your theme	13
		Switch between home screens	13
Safety	3	Personalise the home screen	13
		Add items to the home screen	14
About this user guide	4		
Use the in-device user guide	4	About Mail	14
Get started	4	Social networks	14
Keys and parts	4	About Social	14
Insert the SIM card and battery	5	Take a picture	15
Insert a memory card	6	Find more help	15
Charging	7	Support	15
Switch the device on or off	8	Keep your device software and applications up to date	16
Nokia account and Nokia's Ovi services	8	Back up files	16
Device set-up	8	Access codes	17
Copy contacts or pictures from your old device	8	Green tips	17
Lock or unlock the keys and screen	9	Save energy	17
Change the volume of a call, song, or video	9	Recycle	18
Install Nokia Ovi Suite on your PC	9	Product and safety information	18
Touch screen actions	10		
Call a phone number	11		
Answer a call	12		
Mute a call	12		
Save phone numbers and mail addresses	12		
Add your important contacts to the home screen	12		
Send a message	12		
Personalisation	13		





Safety

Read these simple guidelines. Not following them may be dangerous or illegal. Read the complete user guide for further information.

SWITCH OFF IN RESTRICTED AREAS



Switch the device off when mobile phone use is not allowed or when it may cause interference or danger, for example, in aircraft, near medical equipment, fuel, chemicals, or blasting areas.

ROAD SAFETY COMES FIRST



Obey all local laws. Always keep your hands free to operate the vehicle while driving. Your first consideration while driving should be road safety.

INTERFERENCE



All wireless devices may be susceptible to interference, which could affect performance.

QUALIFIED SERVICE



Only qualified personnel may install or repair this product.

KEEP YOUR DEVICE DRY



Your device is not water-resistant. Keep it dry.

GLASS PARTS

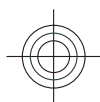
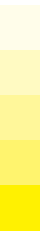


The front cover of the device is made of glass. This glass can break if the device is dropped on a hard surface or receives a substantial impact. If the glass breaks, do not touch the glass parts of the device or attempt to remove the broken glass from the device. Stop using the device until the glass is replaced by qualified service personnel.

PROTECT YOUR HEARING



Listen to a headset at a moderate level, and do not hold the device near your ear when the loudspeaker is in use.



About this user guide

This short user guide helps you get started with your device. With a short printed user guide, Nokia helps save energy and paper.

Your device contains a complete in-device user guide, which you can refer to for additional information about your device. To read the in-device user guide, select **Menu > Applications > User guide**.

For even more support information, go to www.nokia.com/support, or using a mobile device, nokia.mobi/support.

Use the in-device user guide

Select **Menu > Applications > User guide**.

Open the user guide from an application



Select **Options > User guide**. This is not available for every application.

Search the user guide

When the user guide is open, select **Options > Search**, and enter a letter or a word in the search field.

Switch between the user guide and an application

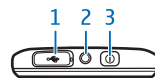
Press and hold the menu key, swipe left or right, and select the desired application.


Links to related topics may be at the end of instructions.  indicates a link to a related topic, and  indicates a link to a web page.

Get started

Keys and parts

Top

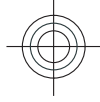


- 1 Micro USB connector
- 2 Nokia AV connector (3.5 mm)
- 3 Power key 

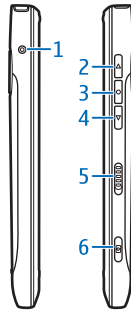
Front




- 1 Earpiece
- 2 Call key
- 3 Microphone
- 4 Menu key
- 5 End key
- 6 Secondary camera lens



Sides



- 1 Charger connector
- 2 Volume up/Zoom in key
- 3 Voice key
- 4 Volume down/Zoom out key
- 5 Lock switch
- 6 Camera key 

Touch screen

To control your device, lightly touch the screen with your fingertips. The screen does not respond when you use your fingernails.

If your fingertips are cold, the screen may not respond to your touch.

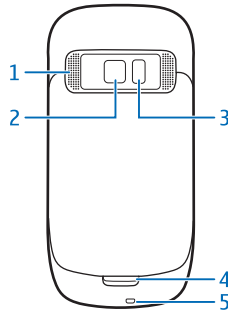
To avoid scratching the touch screen, never use a pen, pencil, or other sharp object to write on the touch screen.

Noise cancellation

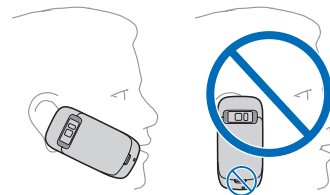
If you are calling from a noisy environment, your device filters out background noise to make your voice sound clearer to the person at the other end of the line.

Noise cancellation is not available when using the loudspeaker or a headset.

Back



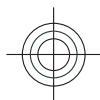
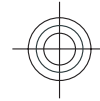
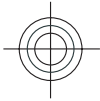
- 1 Loudspeaker
- 2 Camera lens
- 3 Camera flash
- 4 Secondary microphone
- 5 Wrist strap hole



For the best noise cancellation, hold the device with the earpiece to your ear and the main microphone towards your mouth. Do not cover the secondary microphone at the back of the device.

Insert the SIM card and battery

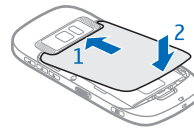
Important: Do not use a micro-SIM or a micro-SIM with an adapter in this device. This device does not support use of micro-SIM cards, and use of incompatible SIM cards may damage the card or the device, and may corrupt data stored on the card.



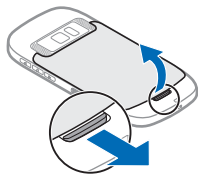


Follow the instructions carefully, to avoid damaging the back cover.

Safe removal. Always switch the device off and disconnect the charger before removing the battery.



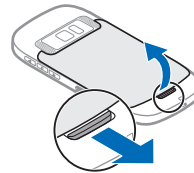
- 1 Unlock the back cover release latch, and lift the back cover.



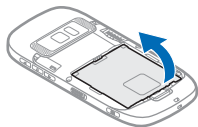
Insert a memory card

Switch off the device before inserting a memory card.

- 1 Remove the back cover of the device.

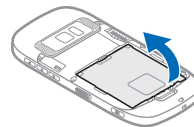


- 2 If the battery is inserted, lift the battery out.



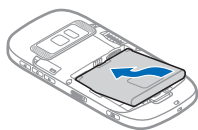
- 2 If the battery is inserted, lift the battery out.

- 3 Insert a SIM card. Use the diagram printed on the device to correctly align the card.



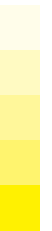
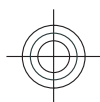
- 4 Line up the contacts of the battery and the battery compartment, and insert the battery.

- 3 Insert a compatible memory card into the slot. Make sure the contact area of the card is facing down.



- 5 To replace the back cover, direct the top locking catches toward their slots, and press down until the cover locks into place.

- 4 Push the card in, until it clicks.





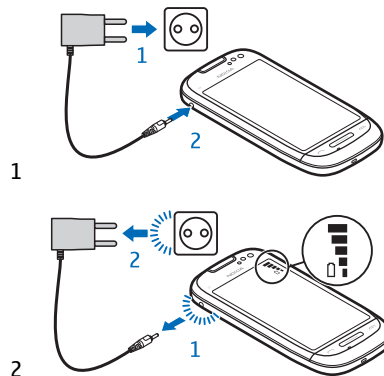
- Replace the battery and the back cover. Make sure the cover is properly closed.

Charging

Charge the battery

Your battery has been partially charged at the factory, but you may need to recharge it before you can switch on your device for the first time.

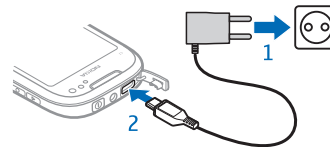
If the device indicates a low charge, do the following:



You do not need to charge the battery for a specific length of time, and you can use the device while it is charging.

If the battery is completely discharged, it may take several minutes before the charging indicator appears on the display or before any calls can be made.

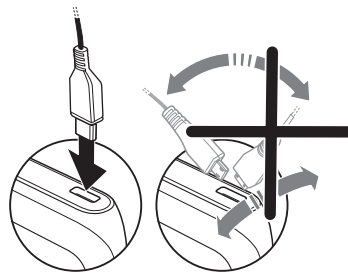
Tip: You can also use a compatible USB charger to charge your battery.



Charge the battery over USB

Battery low, but you don't have a charger with you? You can use a compatible USB cable to connect to a compatible device, such as a computer.

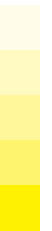
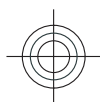
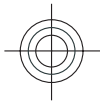
To avoid breaking the charger connector, be careful when connecting or disconnecting the charger cable.



If connected to a computer, you can synchronise your device while charging.


Charging over USB can take longer to start, and may not work if you connect through a non-powered USB hub. Your device charges more quickly when connected to a wall outlet.

When the battery is charging, the charging indicator light next to the USB connector is lit. When the battery charge is low, the charging indicator light flashes. It may take a while for charging to start.





Switch the device on or off

Press and hold .



Nokia account and Nokia's Ovi services

When you switch on your device for the first time, you can create a Nokia account, so you can access Nokia's Ovi services.


With Ovi services and your Nokia account, you can, for example:

- See your friends' statuses in different social networking services
- Download games, applications, videos, pictures, themes, and ringing tones from Ovi Store
- Get to where you want to go with free walk and drive navigation
- Back up and manage your contacts in the Ovi internet service





To learn more about Ovi, go to www.ovi.com.

To create a Nokia account later, use your device to access an Ovi service, and you are prompted to create an account.

Device set-up

To define some basic settings for your device, select the Phone setup shortcut  that is in one of your home screens. To switch between home screens, swipe left or right.

With Phone setup, you can do the following:

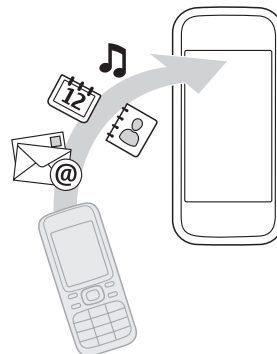
-  Copy contacts, pictures, and other content from your previous Nokia device
-  Personalise your device, by changing the ringing tone and visual theme
-  Set up mail
-  Update your device software

To define the settings later, you can also select **Menu > Applications > Tools > Phone setup**.

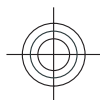
Copy contacts or pictures from your old device

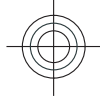
Use the Phone switch application to copy, for example, contacts, calendar entries, and pictures from your previous compatible Nokia device, free of charge.

Select **Menu > Applications > Tools > Phone setup and Data transfer**.



If your old Nokia device does not have the Phone switch application, your new





device sends it in a message. Open the message in the old device, and follow the instructions.

- 1 Select the device you want to connect to, and pair the devices. Bluetooth needs to be activated.
- 2 If the other device requires a passcode, enter the passcode. The passcode, which you can define yourself, must be entered in both devices. The passcode in some devices is fixed. For details, see the user guide of the device.
The passcode is valid only for the current connection.
- 3 Select the content and OK.

Lock or unlock the keys and screen

To avoid accidentally making a call when your device is in your pocket or bag, lock the keys and screen of your device.

Slide the lock switch.



Set the keys and screen to lock automatically

- 1 Select **Menu > Settings and Phone > Display > Screen/keylock time-out**.
- 2 Define the length of time after which the keys and screen are locked automatically.

Change the volume of a call, song, or video

Use the volume keys.

The built-in loudspeaker allows you to speak and listen from a short distance without having to hold the device to your ear.

Activate or deactivate the loudspeaker during a call

Select or .

Install Nokia Ovi Suite on your PC

With the Nokia Ovi Suite PC application, you can manage content on your device, and keep it in sync with your computer.

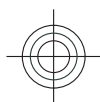
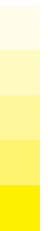
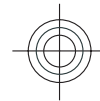
Download the latest version of Nokia Ovi Suite from www.ovi.com/suite.

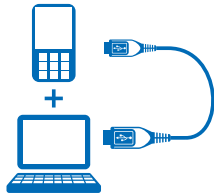
If you cannot connect to the internet, to install Ovi Suite and Nokia Ovi Player from your device:

- 1 Use a compatible USB data cable to connect your device to your computer.

If you are using Windows XP or Windows Vista on your computer, set the USB mode of your device to **Nokia Ovi Suite**. On your device, select the notification area in the top right corner, and select > **USB > Mass storage**.

Your device mass memory appears as a removable disk on your PC.





- 2 On your computer, select **Install Nokia Ovi Suite**.



If the installation window does not open automatically, open the installation file manually. Select **Open folder to view files**, and double-click **Install_Nokia_Ovi_Suite.exe**.



- 3 Follow the instructions.
- 4 When the installation is complete, if you are using Windows XP or Windows Vista on your computer, set the USB mode of your device to **Nokia Ovi Suite**. On your device, select the notification area in the top right corner, and select **USB > Media transfer**.

To learn more about Ovi Suite, go to www.ovi.com/suite.

Touch screen actions

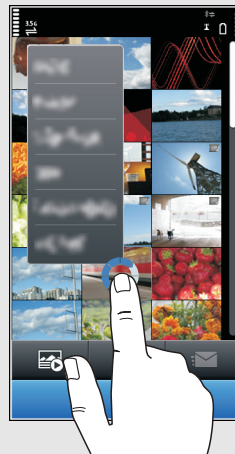
To interact with the user interface, tap or tap and hold the touch screen.

Open an application or other screen element

Tap the application or element.

Access functions quickly

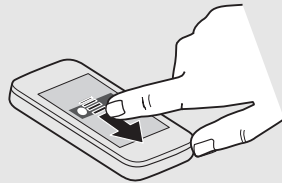
Tap and hold the item. A pop-up menu with available options opens. For example, to send an image or delete an alarm, tap and hold the image or alarm, and from the pop-up menu, select the appropriate option.



If you tap and hold the home screen, editing mode is activated.



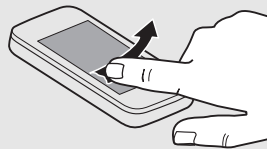
Drag an item



Tap and hold the item, and slide your finger across the screen. The item follows your finger.

You can drag items in the home screen or the main menu, when you have activated editing mode.

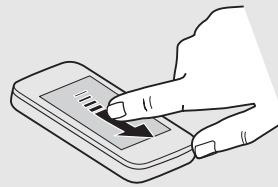
Swipe



Place a finger on the screen, and steadily slide your finger in the desired direction. For example, when you are viewing a picture, to view the next picture, swipe left.

Scroll in a list or menu

Place your finger on the screen, slide it quickly up or down the screen, then lift your finger. The content of the screen scrolls with the speed and direction it had at the moment of release. To select an item from a scrolling list and to stop the movement, tap the item.



Zoom in

Place two fingers on an item, such as a picture or web page, and slide your fingers apart.



Zoom out

Place two fingers on the item, and slide your fingers together.

Call a phone number

- 1 In the home screen, select Call to open the dialler, and enter the phone number.
To enter the + character, used for international calls, select * twice.



- 2 To make the call, press the call key.
- 3 To end the call, press the end key.

Tip: To call a contact, in the home screen, select **Call**, and start entering the contact's name.

Answer a call

When a call arrives, press the call key.

Mute a call

You can mute the microphone in your device during a call.

Press the voice key.

The menu key light changes from white to red when the microphone is muted.

Save phone numbers and mail addresses

You can save your friends' phone numbers, mail addresses, and other information to your contacts list.

Select **Menu** > **Contacts**.

Add a contact to the contacts list

- 1 Select **Options** > **New contact**.
- 2 Select a field, and enter the details. To close the text input, select .

Edit contact information

- 1 Select a contact.
- 2 Open the contact card tab .
- 3 Select a contact detail.

Add details about a contact

Select a contact and **Options** > **Edit** > **Options** > **Add detail**.

Add your important contacts to the home screen

Add your most important contacts to the home screen, so you can quickly call or send messages to them.

The contacts need to be stored in your device memory.

- 1 In the Favourite contacts widget, select .
- 2 To mark the contacts to add to the home screen, select the desired contacts. You can add up to 20 contacts to the widget.

Call or send a message to a contact

In the widget, select the contact.

Remove a contact from the home screen

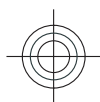
In the widget, select and the contact to remove. The contact is deleted from the widget, but remains in your contacts list.

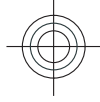
Send a message

With text and multimedia messages, you can quickly contact your friends and family. In a multimedia message, you can attach pictures, videos, and sound clips that you want to share.

Select **Menu** > **Messaging**.

- 1 Select **New message**.
- 2 To select recipients from the contacts list, select the **To** title. To enter the recipient's phone number manually, enter the number in the **To** field.
- 3 To add an attachment, select .





4 Select .

Sending a message with an attachment may be more expensive than sending a normal text message. For more information, contact your service provider.

If the item you inserted in a multimedia message is too large for the network, the device may automatically reduce the size.

Only compatible devices can receive and display multimedia messages. Messages may look different in different devices.

Personalisation

Personalise your tones


You can personalise your device tones for each profile.

Select **Menu > Settings > Profiles**.

- 1 Select the desired profile.
- 2 Select **Personalise** and the desired option.

Tip: Download ringing tones from Ovi Store. To learn more about Ovi Store, go to www.ovi.com.

Change your theme

 With themes, you can change the colours and look of your display.

Select **Menu > Settings > Themes**.

Select **General** and a theme.

Some themes include background animation effects. To save battery power, select **General > Options > Theme effects > Off**.


Tip: Download themes from Ovi Store. To learn more about Ovi Store, go to www.ovi.com.

Switch between home screens

You can have more than one home screen.

To switch to another home screen, swipe left or right.



 indicates which home screen you are in.

Personalise the home screen

You can change wallpaper, and rearrange home screen items.

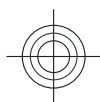
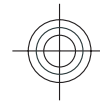
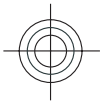
Rearrange items in the home screen

- 1 Tap and hold the home screen.
- 2 Drag and drop items to a new location.

Change the wallpaper

- 1 Tap and hold the home screen.
- 2 Select **Options > Change wallpaper**.
- 3 Select the desired picture.

Tip: Download more background images from Ovi Store. For details, go to www.ovi.com.





Add items to the home screen

You can create shortcuts to your most used features and add mini-applications (widgets) that display helpful information.


Add a shortcut to the home screen

You can add shortcuts to applications, web bookmarks, or actions, such as writing a message.

- 1 Tap and hold the home screen.
- 2 Select the shortcut widget and **Settings**.
- 3 Select the shortcut you want to define, and select **Application** or **Bookmark** and the desired item.

Tip: To remove a shortcut, replace it with another one.

Add a widget to the home screen

- 1 Tap and hold the home screen.
- 2 Select  and the desired widget from the list.

Tip: To download more widgets, select **Store**.

Remove a widget from the home screen

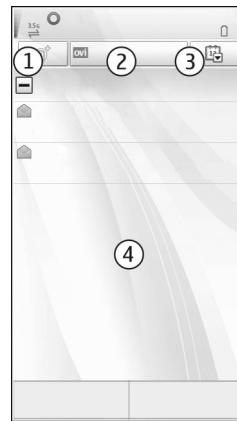
- 1 Tap and hold the home screen.
- 2 Select the widget, and from the pop-up menu, select **Remove**.

About Mail

Select **Menu > Applications > Mail**.

With Mail, you can add several mailboxes and access them directly from your home screen. In the main mail view, you can switch from one mailbox to another.

If you do not have a mail account, you can create one at www.ovi.com.



- 1 Write a mail.
- 2 Switch between your mailboxes.
- 3 Sort your mail by, for example, date.
- 4 Mail in current mailbox.

Mail contains interactive elements. Select and hold, for example, a mail to view a pop-up menu.

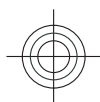
Social networks

About Social

Select **Menu > Social**, sign in to Ovi by Nokia, and then sign in to your relevant social networking services.

With the Social application, you can enhance your social networking experience. When signed in to social networking services through Ovi by Nokia, you can do the following:

- See your friends' status updates from multiple services in one view

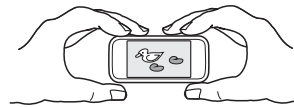




- Post your own status update to multiple services at the same time
- Instantly share pictures you take with the camera
- Link your online friends' profiles to their contact information in your device
- Add your location information to your status update
- Add events from the service calendar to your device calendar

tracker detects and draws rectangles around faces, even when they are moving.

- 2 Press the camera key. Do not move the device before the picture is saved and the final picture displayed.



Only those features that are supported by the social networking service are available.

Using social networking services requires network support. This may involve the transmission of large amounts of data and related data traffic costs. For information about data transmission charges, contact your service provider.

The social networking services are third party services and not provided by Nokia. Check the privacy settings of the social networking service you are using as you may share information with a large group of people. The terms of use of the social networking service apply to sharing information on that service. Familiarise yourself with the terms of use and the privacy practices of that service.

Take a picture

Press and hold the camera key.

Your device camera has the full focus feature. With this feature, you can take pictures where objects both in the foreground and background are in focus.

- 1 To activate the face tracking feature, select  > **Face detect..** The face

Find more help

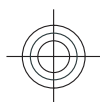
Support

When you want to learn more about how to use your product or you are unsure how your device should function, go to www.nokia.com/support, or using a mobile device, nokia.mobi/support. You can also select **Menu > Applications > User guide** in your device.

If this does not resolve your issue, do one of the following:

- Reboot your device. Switch off the device, and remove the battery. After about a minute, replace the battery, and switch on the device.
- Restore the original factory settings.
- Update your device software.

If your issue remains unsolved, contact Nokia for repair options. Go to www.nokia.com/repair. Before sending your device for repair, always back up the data in your device.





Keep your device software and applications up to date
About device software and application updates

With device software updates and application updates, you can get new features and enhanced functions for your device. Updating the software may also improve your device performance.



It is recommended that you back up your personal data before updating your device software.

Warning:
If you install a software update, you cannot use the device, even to make emergency calls, until the installation is completed and the device is restarted.

After you update your device software or applications, the instructions in the user guide may no longer be up to date.

Update device software and applications using your device

You can check if there are updates available for your device software or for individual applications, and then download and install them to your device (network service). You can also set your device to automatically check for updates and notify you when important or recommended updates are available.

Select **Menu > Applications > Tools > SW update**.

If there are available updates, select which updates to download and install, and select **▶**.

Set your device to automatically check for updates

Select **Options > Settings > Auto-check for updates**.

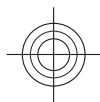
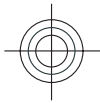
Update device software using your PC

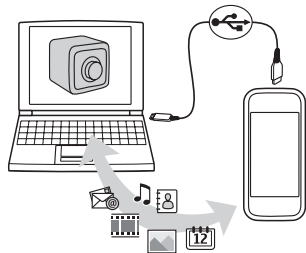
You can use the Nokia Software Updater PC application to update your device software. To update your device software, you need a compatible PC, a high-speed internet connection, and a compatible USB data cable to connect your device to the PC.

To get more information and to download the Nokia Software Updater application, go to www.nokia.com/softwareupdate.

Back up files

Want to make sure that you will not lose any important files? You can back up the device memory to a compatible computer or memory card.





Select Menu > Applications > Office > File mgr. and Backup.

It is recommended that you back up the device memory regularly to a compatible computer or memory card.

Tip: If you have DRM-protected content, use Nokia Ovi Suite to back up both the licences and the content to your computer.

Access codes

PIN code — This code protects your SIM card against unauthorised use. The PIN code (4 - 8 digits) is usually supplied with the SIM card.

PIN2 code — This code (4 - 8 digits) is supplied with some SIM cards, and is required to access some functions in your device.

If you forget an access code, contact the network service provider whose SIM card is in your device. After three consecutive incorrect PIN or PIN2 code entries, the code is blocked, and you need the PUK code to unblock it.

PUK code and PUK2 code — These codes (8 digits) are required to change a blocked PIN code or PIN2 code, respectively. If the

codes are not supplied with the SIM card, contact the network service provider whose SIM card is in your device.

IMEI number — This number (15 or 17 digits) is used to identify valid devices in the GSM network. Devices that are, for example, stolen, can be blocked from accessing the network. The IMEI number for your device can be found under the battery.

Lock code (also known as security code) — The lock code helps you to protect your device against unauthorised use. You can create and change the code, and set the device to request the code. Keep the new code secret and in a safe place separate from your device. If you forget the code and your device is locked, your device will require service. Additional charges may apply, and all the personal data in your device may be deleted. For more information, contact a Nokia Care Point or your device dealer.

Green tips



Save energy

You do not need to charge your battery so often if you do the following (if available for your device):

- Close applications and data connections, for example, your Bluetooth connection, when not in use.
- Decrease the brightness of the screen.
- Set your device to enter power saver mode after the minimum period of inactivity, if available in your device.



- Deactivate unnecessary sounds, such as key tones.

Recycle

All materials of this device can be recovered as materials and energy. For information on how to recycle your old Nokia products, go to www.nokia.com/wecycle, or using a mobile device, nokia.mobi/wecycle.

Recycle packaging and user guides at your local recycling scheme.



The crossed-out wheeled-bin symbol on your product, battery, literature, or packaging reminds you that all electrical and electronic products, batteries, and accumulators must be taken to separate collection at the end of their working life. This requirement applies in the European Union. Do not dispose of these products as unsorted municipal waste. For more information on the environmental attributes of your device, see www.nokia.com/ecodeclaration.

Product and safety information

Network services and costs

Your device is approved for use on the GSM 850, 900, 1800, 1900 MHz networks, and WCDMA 850, 900, 1700, 1900, 2100 MHz networks. To use the device, you need a subscription with a service provider.

Using network services and downloading content to your device may result in data traffic costs. Some product features require support from the network, and you may need to subscribe to them.

Take care of your device

Handle your device, battery, charger and accessories with care. The following suggestions help you protect your warranty coverage.

- Keep the device dry. Precipitation, humidity, and all types of liquids or moisture can contain minerals that corrode electronic circuits. If your device gets wet, remove the battery, and allow the device to dry.
- Do not use or store the device in dusty or dirty areas. Moving parts and electronic components can be damaged.
- Do not store the device in high temperatures. High temperatures can shorten the life of the device, damage the battery, and warp or melt plastics.
- Do not store the device in cold temperatures. When the device warms to its normal temperature, moisture can form inside the device and damage electronic circuits.
- Do not attempt to open the device other than as instructed in the user guide.
- Unauthorised modifications may damage the device and violate regulations governing radio devices.
- Do not drop, knock, or shake the device. Rough handling can break internal circuit boards and mechanics.
- Only use a soft, clean, dry cloth to clean the surface of the device.
- Do not paint the device. Paint can clog the moving parts and prevent proper operation.
- Switch off the device and remove the battery from time to time for optimum performance.
- Keep your device away from magnets or magnetic fields.
- To keep your important data safe, store it in at least two separate places, such as your device, memory card, or computer, or write down important information.

During extended operation, the device may feel warm. In most cases, this condition is normal. If you suspect the device is not working properly, take it to the nearest authorised service facility.

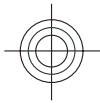
Recycle

Always return your used electronic products, batteries, and packaging materials to dedicated collection points. This way you help prevent uncontrolled waste disposal and promote the recycling of materials. Check product environmental information and how to recycle your Nokia products at www.nokia.com/wecycle, or with a mobile device, <http://nokia.mobi/wecycle>.

Batteries and chargers

Nokia battery authentication guidelines

Always use original Nokia batteries for your safety. To help ensure that you are getting an original Nokia battery, purchase it from a Nokia authorised service centre or dealer, and check the hologram label.



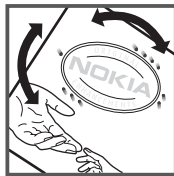


Authenticate hologram

- 1 Look at the hologram. You should see the Nokia connecting hands symbol from one angle and the Nokia Original Accessories logo from the other angle.



- 2 Angle the hologram left, right, down, and up. You should see 1, 2, 3 and 4 dots on each side respectively.



However, this is not a total assurance of the authenticity of the battery. If you cannot confirm authenticity or if you have any reason to believe that your Nokia battery with the hologram on the label is not an authentic Nokia battery, stop using the battery and take it to the nearest Nokia authorised service centre or dealer.

To find out more about original Nokia batteries, go to www.nokia.com/battery.

Battery and charger information

This device is intended for use with a BL-5K rechargeable battery. Nokia may make additional battery models available for this device. Always use original Nokia batteries.

This device is intended for use when supplied with power from the following chargers: AC-15. The exact charger model number may vary depending on the type of plug. The plug variant is identified by one of the following: E, X, AR, U, A, C, K, or B.

The battery can be charged and discharged hundreds of times, but it will eventually wear out. When the talk and standby times are noticeably shorter than normal, you need to replace the battery.

Battery safety

Always switch the device off and disconnect the charger before removing the battery. When you unplug a charger or an accessory, hold and pull the plug, not the cord.

When your charger is not in use, unplug it from the electrical plug and the device. Do not leave a fully charged battery connected to a charger, as overcharging may shorten the battery's lifetime. If left unused, a fully charged battery will lose its charge over time.

Always keep the battery between 15°C and 25°C (59°F and 77°F). Extreme temperatures reduce the capacity and lifetime of the battery. A device with a hot or cold battery may not work temporarily.

Accidental short-circuiting can happen when a metallic object touches the metal strips on the battery, for example, if you carry a spare battery in your pocket. Short-circuiting may damage the battery or the connecting object.

Do not dispose of batteries in a fire as they may explode. Dispose of batteries according to local regulations. Recycle when possible. Do not dispose as household waste.

Do not dismantle, cut, open, crush, bend, puncture, or shred cells or batteries. If a battery leaks, do not let battery liquid touch skin or eyes. If this happens, immediately flush the affected areas with water, or seek medical help.

Do not modify, remanufacture, attempt to insert foreign objects into the battery, or immerse or expose it to water or other liquids. Batteries may explode if damaged.

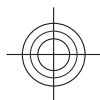
Use the battery and charger for their intended purposes only. Improper use, or use of unapproved batteries or chargers may present a risk of fire, explosion, or other hazard, and may invalidate any approval or warranty. If you believe the battery or charger is damaged, take it to a service centre for inspection before continuing to use it. Never use a damaged battery or charger. Only use the charger indoors.

Additional safety information

Emergency calls

Make an emergency call

- 1 Ensure the device is switched on.
- 2 Check for adequate signal strength. You may also need to do the following:
 - Insert a SIM card.
 - Remove call restrictions you have activated for your device, such as call barring, fixed dialling, or closed user group.
 - Ensure your device is not in an offline or flight profile.





- If the device screen and keys are locked, unlock them.
- 3 To clear the display, press the end key as many times as needed.
 - 4 Select Call.
 - 5 Enter the official emergency number for your present location. Emergency call numbers vary by location.
 - 6 Press the call key.
 - 7 Give the necessary information as accurately as possible. Do not end the call until given permission to do so.

Important: Activate both cellular and internet calls, if your device supports internet calls. The device may attempt to make emergency calls both through cellular networks and through your internet call service provider. Connections in all conditions cannot be guaranteed. Never rely solely on any wireless device for essential communications like medical emergencies.

Small children

Your device, its battery and accessories are not toys. They may contain small parts. Keep them out of the reach of small children.

Medical devices

Operation of radio transmitting equipment, including wireless phones, may interfere with the function of inadequately protected medical devices. Consult a physician or the manufacturer of the medical device to determine whether they are adequately shielded from external RF energy. Switch off your device when regulations posted instruct you to do so, for example, in hospitals.

Implanted medical devices

Manufacturers of medical devices recommend a minimum separation of 15.3 centimetres (6 inches) between a wireless device and an implanted medical device, such as a pacemaker or implanted cardioverter defibrillator, to avoid potential interference with the medical device. Persons who have such devices should:

- Always keep the wireless device more than 15.3 centimetres (6 inches) from the medical device.
- Not carry the wireless device in a breast pocket.
- Hold the wireless device to the ear opposite the medical device.
- Turn the wireless device off if there is any reason to suspect that interference is taking place.
- Follow the manufacturer directions for the implanted medical device.

If you have any questions about using your wireless device with an implanted medical device, consult your health care provider.

Hearing

Warning:

When you use the headset, your ability to hear outside sounds may be affected. Do not use the headset where it can endanger your safety.

Some wireless devices may interfere with some hearing aids.

Protect your device from harmful content

Your device may be exposed to viruses and other harmful content. Take the following precautions:

- Be cautious when opening messages. They may contain malicious software or otherwise be harmful to your device or computer.
- Be cautious when accepting connectivity requests, browsing the internet, or downloading content. Do not accept Bluetooth connections from sources you do not trust.
- Only install and use services and software from sources that you trust and that offer adequate security and protection.
- Install antivirus and other security software on your device and any connected computer. Only use one antivirus application at a time. Using more may affect performance and operation of the device and/or computer.
- If you access preinstalled bookmarks and links to third party internet sites, take the appropriate precautions. Nokia does not endorse or assume liability for such sites.

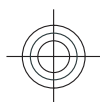
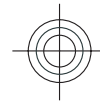
Operating environment

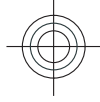
This device meets RF exposure guidelines in the normal use position at the ear or at least 1.5 centimetres (5/8 inch) away from the body. Any carry case, belt clip, or holder for body-worn operation should not contain metal and should position the device the above-stated distance from your body.

To send data files or messages requires a quality connection to the network. Data files or messages may be delayed until such a connection is available. Follow the separation distance instructions until the transmission is completed.

Vehicles

Radio signals may affect improperly installed or inadequately shielded electronic systems in motor vehicles such as electronic fuel injection, electronic antilock braking, electronic speed control, and air bag systems. For more





information, check with the manufacturer of your vehicle or its equipment.

Only qualified personnel should install the device in a vehicle. Faulty installation or service may be dangerous and may invalidate your warranty. Check regularly that all wireless device equipment in your vehicle is mounted and operating properly. Do not store or carry flammable liquids, gases, or explosive materials in the same compartment as the device, its parts, or accessories. Remember that air bags inflate with great force. Do not place your device or accessories in the air bag deployment area.

Switch off your device before boarding an aircraft. The use of wireless devices in an aircraft may be dangerous to the operation of the aircraft and may be illegal.

Potentially explosive environments

Switch off your device in any area with a potentially explosive atmosphere. Obey all posted instructions. Sparks in such areas could cause an explosion or fire resulting in bodily injury or death. Switch off the device at refuelling points such as near gas pumps at service stations. Observe restrictions in fuel depots, storage, and distribution areas; chemical plants; or where blasting operations are in progress. Areas with a potentially explosive atmosphere are often, but not always, clearly marked. They include areas where you would be advised to turn off your vehicle engine, below deck on boats, chemical transfer or storage facilities and where the air contains chemicals or particles such as grain, dust, or metal powders. You should check with the manufacturers of vehicles using liquefied petroleum gas (such as propane or butane) to determine if this device can be safely used in their vicinity.

Wet or dusty conditions

Important: Accessories for use with this device are not as durable or water-resistant as the device. For example, chargers should only be used in dry conditions, never when damp or wet.

- Water-resistance means resistance against cold, clean fresh water only. Do not expose the device to any other type of liquid, such as sea water.
- Do not submerge your device in water.
- If the device has been exposed to water, wipe it off with a dry cloth. If it has been exposed to any other liquid, immediately splash some clean fresh water onto the device. Wipe the device carefully dry.
- Do not charge the device or connect anything to the connectors if they are dusty, wet, or damp.
- If the connectors are dusty, open the connector cover of the device and splash clean freshwater onto the connectors to remove the dust. Wipe the device and

connector area dry carefully, and let the inside of the connectors dry.

- Only open the back cover in dry and clean conditions, and wipe the device dry and clean before opening the back cover to prevent water or dust from reaching the interior of the device. Make sure the interior of your device and the back cover seals are dry, clean, and free of any foreign objects, as they may damage the seals against water.

Certification information (SAR)

This mobile device meets guidelines for exposure to radio waves.

Your mobile device is a radio transmitter and receiver. It is designed not to exceed the limits for exposure to radio waves recommended by international guidelines. These guidelines were developed by the independent scientific organisation ICNIRP and include safety margins designed to assure the protection of all persons, regardless of age and health.

The exposure guidelines for mobile devices employ a unit of measurement known as the Specific Absorption Rate or SAR. The SAR limit stated in the ICNIRP guidelines is 2.0 watts/kilogram (W/kg) averaged over 10 grams of tissue. Tests for SAR are conducted using standard operating positions with the device transmitting at its highest certified power level in all tested frequency bands. The actual SAR level of an operating device can be below the maximum value because the device is designed to use only the power required to reach the network. That amount changes depending on a number of factors such as how close you are to a network base station.

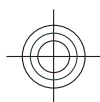
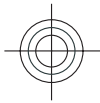
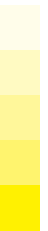
The highest SAR value under the ICNIRP guidelines for use of the device at the ear is 0.73 W/kg.

Use of device accessories may result in different SAR values. SAR values may vary depending on national reporting and testing requirements and the network band. Additional SAR information may be provided under product information at www.nokia.com.

Your mobile device is also designed to meet the requirements for exposure to radio waves established by the Federal Communications Commission (USA) and Industry Canada. These requirements set a SAR limit of 1.6 W/kg averaged over one gram of tissue. The highest SAR value reported under this standard during product certification for use at the ear is 1.03 W/kg and when properly worn on the body is 0.83 W/kg.

Feature-specific information

Use of the Mail for Exchange is limited to over-the-air synchronisation of PIM information between the Nokia device and the authorised Microsoft Exchange server.





Note: Using WLAN may be restricted in some countries. For example, in France, you are only allowed to use WLAN indoors. For more information, contact your local authorities.

Note: FM transmitter can not be used in Greece. For more information, contact you local operator and go to www.nokia.com/fmtransmitter.

Do not connect products that create an output signal as this may cause damage to the device. Do not connect any voltage source to the Nokia AV connector. If you connect an external device or headset, other than those approved by Nokia for use with this device, to the Nokia AV connector, pay special attention to volume levels.

Copyright and other notices

DECLARATION OF CONFORMITY

CE0434 ⓘ

Hereby, NOKIA CORPORATION declares that this RM-675 product is in compliance with the essential requirements and other relevant provisions of Directive 1999/5/EC. A copy of the Declaration of Conformity can be found at www.nokia.com/phones/declaration_of_conformity/.

© 2010 Nokia. All rights reserved.

Nokia, Nokia Connecting People, Nokia Original Accessories logo, and Ovi by Nokia are trademarks or registered trademarks of Nokia Corporation. Nokia tune is a sound mark of Nokia Corporation. Other product and company names mentioned herein may be trademarks or tradenames of their respective owners.

Reproduction, transfer, distribution, or storage of part or all of the contents in this document in any form without the prior written permission of Nokia is prohibited. Nokia operates a policy of continuous development. Nokia reserves the right to make changes and improvements to any of the products described in this document without prior notice.



Java and all Java-based marks are trademarks or registered trademarks of Sun Microsystems, Inc.

This product is licensed under the MPEG-4 Visual Patent Portfolio License (i) for personal and noncommercial use in connection with information which has been encoded in compliance with the MPEG-4 Visual Standard by a consumer engaged in a personal and noncommercial activity and (ii) for use in connection with MPEG-4 video provided by a licensed video provider. No license is granted or shall be implied for any other use. Additional information, including that related to promotional, internal, and commercial uses, may be obtained from MPEG LA, LLC. See <http://www.mpegla.com>.

To the maximum extent permitted by applicable law, under no circumstances shall Nokia or any of its licensors be responsible for any loss of data or income or any special, incidental, consequential or indirect damages howsoever caused.

The contents of this document are provided "as is". Except as required by applicable law, no warranties of any kind, either express or implied, including, but not limited to, the implied warranties of merchantability and fitness for a particular purpose, are made in relation to the accuracy, reliability or contents of this document. Nokia reserves the right to revise this document or withdraw it at any time without prior notice.

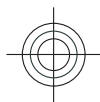
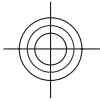
Reverse engineering of software in the device is prohibited to the extent permitted by applicable law. Insofar as this user guide contains any limitations on Nokia's representations, warranties, damages and liabilities, such limitations shall likewise limit any representations, warranties, damages and liabilities of Nokia's licensors.

The availability of products, features, applications and services may vary by region. For more information, contact your Nokia dealer or your service provider. This device may contain commodities, technology or software subject to export laws and regulations from the US and other countries. Diversion contrary to law is prohibited.

FCC/INDUSTRY CANADA NOTICE

Your device may cause TV or radio interference (for example, when using a telephone in close proximity to receiving equipment). The FCC or Industry Canada can require you to stop using your telephone if such interference cannot be eliminated. If you require assistance, contact your local service facility. This device complies with part 15 of the FCC rules. Operation is subject to the following two conditions: (1) This device may not cause harmful interference, and (2) this device must accept any interference received, including interference that may cause undesired operation. Any changes or modifications not expressly approved by Nokia could void the user's authority to operate this equipment.

Some operations and features are SIM card and/or network dependent, MMS dependent, or dependent on the





compatibility of devices and the content formats supported.
Some services are subject to a separate charge.

9222032/Issue 1 EN

