
User Guide

Nokia XXX

NOKIA

Psst...

This guide isn't all there is...

For the online user guide, even more info, and troubleshooting help, go to www.nokia.com/support.

Check out the videos at www.youtube.com/NokiaSupportVideos.

Safety

Read these simple guidelines. Not following them may be dangerous or illegal. For further info, read the complete user guide.



SWITCH OFF IN RESTRICTED AREAS

Switch the device off when mobile phone use is not allowed or when it may cause interference or danger, for example, in aircraft, in hospitals or near medical equipment, fuel, chemicals, or blasting areas. Obey all instructions in restricted areas.



ROAD SAFETY COMES FIRST

Obey all local laws. Always keep your hands free to operate the vehicle while driving. Your first consideration while driving should be road safety.



INTERFERENCE

All wireless devices may be susceptible to interference, which could affect performance.



QUALIFIED SERVICE

Only qualified personnel may install or repair this product.



BATTERIES, CHARGERS, AND OTHER ACCESSORIES

Use only batteries, chargers, and other accessories approved by Nokia for use with this device. Third-party chargers that comply with the IEC/EN 62684 standard, and that can connect to your device micro USB connector, may be compatible. Do not connect incompatible products.



KEEP YOUR DEVICE DRY

Your device is not water-resistant. Keep it dry.



GLASS PARTS

The device screen is made of glass. This glass can break if the device is dropped on a hard surface or receives a substantial impact. If the glass breaks, do not touch the glass parts of the device or attempt to remove the broken glass from the device. Stop using the device until the glass is replaced by qualified service personnel.



PROTECT YOUR HEARING

To prevent possible hearing damage, do not listen at high volume levels for long periods. Exercise caution when holding your device near your ear while the loudspeaker is in use.

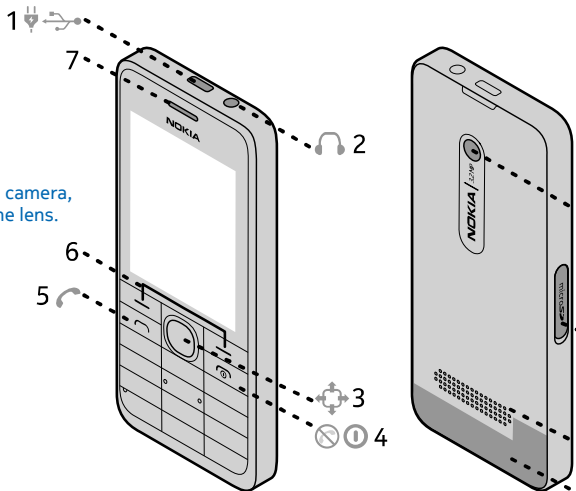
Get started

Get to grips with the basics, and have your phone up and running in no time.

Keys and parts

Explore the keys and parts of your new phone.

- 1 Micro-USB connector
- 2 Headset connector (3.5 mm)
- 3 Scroll key
- 4 End/Power key
- 5 Call key
- 6 Selection keys
- 7 Earpiece
- 8 Camera lens. Before using the camera, remove the protective tape from the lens.
- 9 Memory card slot
- 10 Loudspeaker
- 11 Antenna area

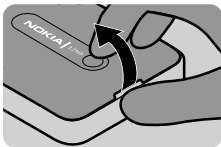


Insert a SIM card and battery

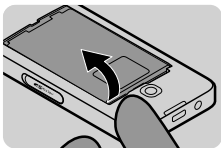
Learn how to insert a SIM card and the battery.

The SIM1 holder under the battery can be used for both 3G and 2G SIMs.

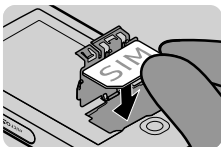
1. Switch the phone off, and remove the back cover.



2. If the battery is in the phone, lift it out.



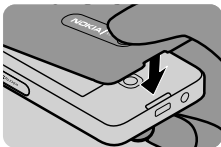
3. Lift the cover of the SIM1 holder, and put the SIM in, contact area face down.



4. Line up the battery contacts, and push the battery in.



5. Press the back cover down until it locks into place.



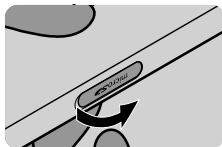
6. To switch on, press and hold the power key  until the phone vibrates.



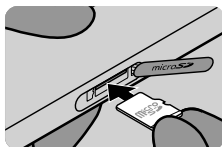
Insert a memory card

Read on to learn how to insert a memory card into your phone.

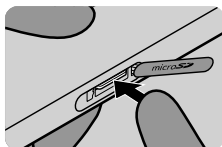
1. Open the memory card cover.



2. Push the card in, contact area face down.



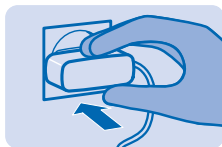
3. Push the card in until it locks into place. Close the cover.



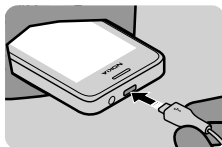
Charge the battery

Your battery has been partially charged at the factory, but you may need to recharge it before you can use your phone.

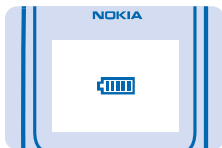
1. Plug the charger into a wall outlet.



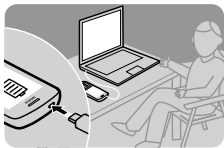
2. Connect the charger to the phone. [#unique_10/unique_10_Connect_42_S-BATTERY-DISCHARGED](#) on page 17



3. Battery full? Unplug the charger first from the phone, then from the wall outlet.



★ Tip:



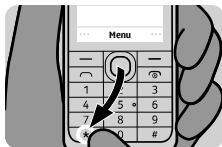
You can use USB charging when a wall outlet is not available. Data can be transferred while charging the device. The efficiency of USB charging power varies significantly, and it may take a long time for charging to start and the device to start functioning.

Lock the keys



Lock the keys when not using your phone.

1. Select **Menu**, and press *.



2. To unlock, select **Unlock**, and press *.



Copy content from your old phone



Easily get your contacts, calendar entries, and other stuff to your new phone.

1. Switch Bluetooth on in both phones. To switch Bluetooth on on your new phone, select **Menu > Settings > Connectivity > Bluetooth**.
2. On your new phone, select **Menu > Settings > Sync & backup > Phone switch**.
3. Select **Copy to this**, what you want to copy, and select **Done**.
4. Choose your old phone from the list of found devices.
5. If asked, create a one-time passcode (such as 123), and select **OK**.
6. Check that the codes match on both phones.
7. Follow the instructions shown on both phones.

Basics

Learn how to get the most out of your new phone.

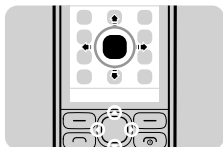
Explore your phone

Explore your phone with a simple key press.

1. To see the apps and features of your phone, press **Menu**.



2. To go to an app or feature, press the scroll key up, down, left, or right.



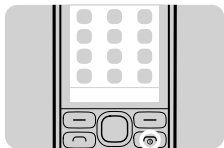
3. To open the app or select the feature, press **Select**.



4. To go back to the previous view, press **Back**.



5. To go back to the home screen, press .



Write text

Want to write a note or maybe use more than one language in your message? Writing with the keypad is easy and fun.

Press a key repeatedly until the letter is shown.

Type in a special character or punctuation mark

Press and hold *, and select the character.

Switch between character cases

Press #.

Type in a number

Press and hold #, and select **Number mode**. To go back to letter mode, press and hold #.

Switch predictive text on or off

Select **Options > Prediction**, and select **On** or **Off**. Not all languages are supported.

Change the writing language

Select **Options > Writing language**.

People & messaging

Contact your friends and family, and share files, such as photos, using your phone. Stay tuned with the latest updates to your social networking services even when on the go.

Make or answer a call

Learn how to make or answer a call with your new phone.

1. On the home screen, type in the phone number.

To type in the + character, used for international calls, press * twice.



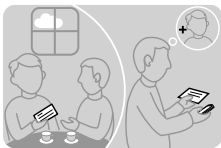
2. Press .

3. To end the call, press .

4. When someone calls you, press  to answer.

Warning: When the flight profile is activated, you cannot make or receive any calls, including emergency calls, or use other features that require network coverage. To make a call, activate another profile.

Save a name and phone number



Add new contacts to your phone.

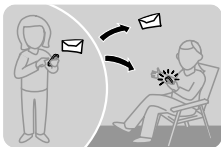
1. Select **Menu** > **Contacts**.

2. Select **Add new**.

3. Type in the phone number, and select **OK**.

4. Write the first and last name, and select **Save**.

Send a message



With text and multimedia messages, you can quickly contact your friends and family.

1. Select **Menu > Messaging**.
2. Select **Create message**.
3. Write your message.
4. To add an attachment, such as a photo or video, select **Options > Insert object**.

If the item you insert in a multimedia message is too large for the network, the device may automatically reduce the size.

5. To add a contact as a recipient, select **Send to > Contacts**. To type in a number, select **Number or mail**.
6. Select **Send**.

Only compatible devices can receive and show multimedia messages. Messages may look different in different devices.

You can send text messages that are longer than the character limit for a single message. Longer messages are sent as two or more messages. Your service provider may charge accordingly. Characters with accents, other marks, or some language options, take more space, and limit the number of characters that can be sent in a single message.

Get social



Use the Notifications app to see what's happening with your friends.

Sign in to your social networking services.

1. Select **Menu > Apps**.
2. Select **My apps > Notifications**.

★ **Tip:** Add Notifications to your home screen to see the latest updates.

Switch Notifications off

In the Notifications app, select **Options > Settings**, clear the check box, and select **Save**.


Camera

Why carry a separate camera if your phone has all you need for capturing memories? With your phone camera, you can easily take photos or record videos.

Take a photo



Capture the best moments with your phone camera.

1. To switch the camera on, select **Menu > Photos > Camera**.
2. To zoom in or out, scroll up or down.
3. To take the photo, select .

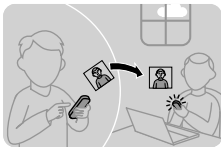
★ **Tip:** To record a video, press the scroll key to the right, and select .

The photos are saved in **Menu > Apps > Gallery > My photos**.

Switch the camera off

Select .

Send a photo or video



Send your best shots to your friends and family in a multimedia message or mail, or using Bluetooth.

1. Select **Menu > Apps > Gallery**.
2. Go to the photo or video, select **Options > Send**, and how you want to send it.

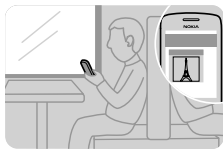
Send several photos or videos at the same time

Go to the folder where the photos or videos are, select **Options > Mark**, and an option. To send, select **Options > Send marked**, and how you want to send.

Internet

Learn how to create wireless connections and browse the web while keeping your data costs down.

Browse the web



Catch up on the news, and visit your favourite websites on the go.

1. Select **Menu > Internet**.
2. Select the address bar.
3. Write a web address.

★ **Tip:** To search the internet, write a search word in the address bar. If asked, select your default search engine.

Zoom in

Select a section of the page.

★ **Tip:** To view the page in a single column of larger, readable text and pictures without having to zoom in, select **Options > Settings**, and switch **Column view** to **On**.

Maps & navigation

Explore what's out there and how to get there.

Find nearby places



Explore the world around you – with Nokia Nearby, you can check for nearby places, such as restaurants and shopping centres.

Some content is generated by third parties and not Nokia. The content may be inaccurate and is subject to availability.

1. Select **Menu > Apps > My apps > Nokia Nearby**.

2. To see a list of certain types of places, such as restaurants, select the category. If you don't see the category you want in the main view, to see more categories, select **More**.

★ **Tip:** To see the place on a map, select the place, and in the place details view, select **see map**.

3. To search for a place, select **Search**, and write the place name in the search box.

★ **Tip:** You can save a place, so you can easily find it later. Select the place and **SAVE**. To see your saved places, in the Nokia Nearby main view, select **More > Favourites**.

Phone management & connectivity

Take care of your phone and its contents. Learn how to connect to accessories and networks, transfer files, create backups, lock your phone, and keep the software up to date.

Share your content using Slam

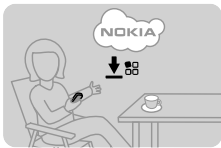


With Slam, sharing your content is now easier than ever.

1. Select **Menu > Settings > Connectivity > Bluetooth > On**.
2. Select **Phone visibility > Always visible** to make your phone visible to others.
3. Select, for example, a photo to share and **Options > ### Share ### > Via Slam**.
4. Move your phone close to the other phone.

Slam searches for the nearest phone, and sends the item to it.

Update your phone software



You can update your phone software wirelessly. You can also set your phone to automatically check for updates.

1. Select **Menu > Settings > Phone > Device updates**.
2. To check if there is an update available and to download it, select **Downl. phone sw.**

The update may take several minutes. If you encounter problems, contact your network service provider.

Your network service provider may send updates over the air directly to your phone. For more info on this network service, contact your network service provider.

Feature-specific information

You can use USB charging when a wall outlet is not available. Data can be transferred while charging the device. The efficiency of USB charging power varies significantly, and it may take a long time for charging to start and the device to start functioning.

If the battery is completely discharged, it may take several minutes before the charging indicator is displayed or before any calls can be made.

Using services or downloading content may cause transfer of large amounts of data, which may result in data traffic costs.

For info on Nokia Service terms and Privacy policy, go to www.nokia.com/privacy.

! **Important:** This device is designed to be used with a standard SIM card (see figure) only. Use of incompatible SIM cards may damage the card or the device, and may corrupt data stored on the card. Please consult your mobile operator for the use of a SIM card that has a mini-UICC cutout.



! **Note:** Switch the device off and disconnect the charger and any other device before removing any covers. Avoid touching electronic components while changing any covers. Always store and use the device with any covers attached.



Use only compatible memory cards approved for use with this device. Incompatible cards may damage the card and the device and corrupt data stored on the card.

Do not connect products that create an output signal, as this may damage the device. Do not connect any voltage source to the audio connector. If you connect an external device or headset, other than those approved for use with this device, to the audio connector, pay special attention to volume levels.

Flight mode closes connections to the mobile network and switches your phone's wireless features off. Comply with the instructions and safety requirements given by, for example, an airline, and any applicable laws and regulations.

Product and safety information

Network services and costs

You can only use your device on the WCDMA 900, 2100 and GSM 850, 900, 1800, 1900 MHz networks. You need a subscription with a service provider.

Using some features and downloading content require a network connection and may result in data costs. You may also need to subscribe to some features.

Battery and charger info

Use your device only with an original BL-4U rechargeable battery. Nokia may make additional battery models available for this device.

Charge your device with AC-20 charger. Charger plug type may vary.

Third-party chargers that comply with the IEC/EN 62684 standard, and that can connect to your device micro USB connector, may also be compatible.

Battery safety

Always switch the device off and unplug the charger before removing the battery. To unplug a charger or an accessory, hold and pull the plug, not the cord.

When your charger is not in use, unplug it. Do not leave a fully charged battery connected to a charger, as overcharging may shorten the battery's lifetime. If left unused, a fully charged battery will lose its charge over time.

Always keep the battery between 15°C and 25°C (59°F and 77°F). Extreme temperatures reduce the capacity and lifetime of the battery. A device with a hot or cold battery may not work temporarily.

Accidental short-circuiting can happen when a metallic object touches the metal strips on the battery. This may damage the battery or the other object.

Do not dispose of batteries in a fire as they may explode. Obey local regulations. Recycle when possible. Do not dispose as household waste.

Do not dismantle, cut, crush, bend, puncture, or otherwise damage the battery in any way. If a battery leaks, do not let liquid touch skin or eyes. If this happens, immediately flush the affected areas with water, or seek medical help. Do not modify, attempt to insert foreign objects into the battery, or immerse or expose it to water or other liquids. Batteries may explode if damaged.

Use the battery and charger for their intended purposes only. Improper use, or use of unapproved or incompatible batteries or chargers may present a risk of fire, explosion, or other hazard, and may invalidate any approval or warranty. If you believe the battery or charger is damaged, take it to a service centre before continuing to use it. Never use a damaged battery or charger. Only use the charger indoors.

Additional safety information

Emergency calls

1. Make sure the device is switched on.
2. Check for adequate signal strength.

You may also need to do the following:

- Put a SIM card in the device, if supported by your device.
 - Switch the call restrictions off in your device, such as call barring, fixed dialling, or closed user group.
 - Make sure the flight profile is not activated.
- 3.
 4. Type in the official emergency number for your present location. Emergency call numbers vary by location.
 - 5.
 6. Give the necessary info as accurately as possible. Do not end the call until given permission to do so.

Important: Activate both cellular and internet calls, if your phone supports internet calls. The phone may attempt to make emergency calls both through cellular networks and through your internet call service provider. Connections in all conditions cannot be guaranteed. Never rely solely on any wireless phone for essential communications like medical emergencies.

Small children

Your device and its accessories are not toys. They may contain small parts. Keep them out of the reach of small children.

Medical devices

Operation of radio transmitting equipment, including wireless phones, may interfere with inadequately shielded medical devices' function. Consult a physician or the medical device's manufacturer to determine if it is adequately shielded from external radio energy.

Implanted medical devices

To avoid potential interference, manufacturers of implanted medical devices recommend a minimum separation of 15.3 centimetres (6 inches) between a wireless device and the medical device. Persons who have such devices should:

- Always keep the wireless device more than 15.3 centimetres (6 inches) from the medical device.
- Not carry the wireless device in a breast pocket.
- Hold the wireless device to the ear opposite the medical device.
- Switch the wireless device off if there is any reason to suspect that interference is taking place.
- Follow the manufacturer directions for the implanted medical device.

If you have any questions about using your wireless device with an implanted medical device, consult your health care provider.

Hearing

Warning: When you use the headset, your ability to hear outside sounds may be affected. Do not use the headset where it can endanger your safety.

Some wireless devices may interfere with some hearing aids.

Operating environment

This device meets radio frequency exposure guidelines in the normal use position at the ear or at least 1.5 centimetres (5/8 inch) away from the body. Any carry case, belt clip, or holder for body-worn operation should not contain metal and should position the device the above-stated distance from your body.

The sending of data files or messages requires a quality network connection and may be delayed until such a connection is available. Follow the separation distance instructions until the sending is completed.

Vehicles

Radio signals may affect improperly installed or inadequately shielded electronic systems in vehicles. For more info, check with the manufacturer of your vehicle or its equipment.

Only qualified personnel should install the device in a vehicle. Faulty installation may be dangerous and invalidate your warranty. Check regularly that all wireless device equipment in your vehicle is mounted and operating properly. Do not store or carry flammable or explosive materials in the same compartment as the device, its parts, or accessories. Do not place your device or accessories in the air bag deployment area.

Potentially explosive environments

Switch your device off in potentially explosive environments, such as near petrol pumps. Sparks may cause an explosion or fire resulting in injury or death. Note restrictions in areas with fuel; chemical plants; or where blasting operations are in progress. Areas with a potentially explosive environment may not be clearly marked. These usually are areas where you are advised to switch your engine off, below deck on boats, chemical transfer or storage facilities, and where the air contains chemicals or particles. Check with the manufacturers of vehicles using liquefied petroleum gas (such as propane or butane) if this device can be safely used in their vicinity.

Certification information (SAR)

This mobile device meets guidelines for exposure to radio waves.

Your mobile device is a radio transmitter and receiver. It is designed not to exceed the limits for exposure to radio waves recommended by international guidelines. These guidelines were developed by the independent scientific organisation ICNIRP and include safety margins designed to assure the protection of all persons, regardless of age and health.

The exposure guidelines for mobile devices employ a unit of measurement known as the Specific Absorption Rate or SAR. The SAR limit stated in the ICNIRP guidelines is 2.0 watts/kilogram (W/kg) averaged over 10 grams of tissue. Tests for SAR are conducted using standard operating positions with the device transmitting at its highest certified power level in all tested frequency bands. The actual SAR level of an operating device can be below the maximum value because the device is designed to use only the power required to reach the network. That amount changes depending on a number of factors such as how close you are to a network base station.

The highest SAR value under the ICNIRP guidelines for use of the device at the ear is 1.29 W/kg. Use of device accessories may result in different SAR values. SAR values may vary depending on national reporting and testing requirements and the network band. Additional SAR information may be provided under product information at www.nokia.com.

Your mobile device is also designed to meet the requirements for exposure to radio waves established by the Federal Communications Commission (USA) and Industry Canada. These requirements set a SAR limit of 1.6 W/kg averaged over one gram of tissue. The highest SAR value reported under this standard during product certification for use at the ear is 1.25 W/kg and when properly worn on the body is 0.98 W/kg.

Nokia support messages

To help you take maximum advantage of your phone and services, you receive free customised text messages from Nokia. The messages contain tips and tricks and support.

To stop receiving the messages, select .

To provide the service described above, your mobile phone number, the serial number of your phone, and some identifiers of the mobile subscription are sent to Nokia when you use the phone for the first time. Some or all information may also be sent to Nokia when updating software. This information may be used as specified in the privacy policy, available at www.nokia.com.

Copyrights and other notices

DECLARATION OF CONFORMITY

CE0168

Hereby, NOKIA CORPORATION declares that this RM-840 product is in compliance with the essential requirements and other relevant provisions of Directive 1999/5/EC. A copy of the Declaration of Conformity can be found at www.nokia.com/global/declaration/declaration-of-conformity.

© 2012 Nokia. All rights reserved. Nokia, Nokia Care, Nokia Connecting People, and Mail for Exchange are trademarks or registered trademarks of Nokia Corporation. Nokia tune is a sound mark of Nokia Corporation. Other product and company names mentioned herein may be trademarks or tradenames of their respective owners.

Downloading of maps, games, music and videos and uploading of images and videos may involve transferring large amounts of data. Your service provider may charge for the data transmission. The availability of particular products, services and features may vary by region. Please check with your local Nokia dealer for further details and availability of language options.

Reproduction, transfer, distribution, or storage of part or all of the contents in this document in any form without the prior written permission of Nokia is prohibited. Nokia operates a policy of continuous development. Nokia reserves the right to make changes and improvements to any of the products described in this document without prior notice.



Includes RSA BSAFE cryptographic or security protocol software from RSA Security.



Java and all Java-based marks are trademarks or registered trademarks of Sun Microsystems, Inc.

The Bluetooth word mark and logos are owned by the Bluetooth SIG, Inc. and any use of such marks by Nokia is under license.

This product is licensed under the MPEG-4 Visual Patent Portfolio License (i) for personal and noncommercial use in connection with information which has been encoded in compliance with the MPEG-4 Visual Standard by a consumer engaged in a personal and noncommercial activity and (ii) for use in connection with MPEG-4 video provided by a licensed video provider. No license is granted or shall be implied for any other use. Additional information, including that related to promotional, internal, and commercial uses, may be obtained from MPEG LA, LLC. See www.mpegla.com.

To the maximum extent permitted by applicable law, under no circumstances shall Nokia or any of its licensors be responsible for any loss of data or income or any special, incidental, consequential or indirect damages howsoever caused.

The contents of this document are provided "as is". Except as required by applicable law, no warranties of any kind, either express or implied, including, but not limited to, the implied warranties of merchantability and fitness for a particular purpose, are made in relation to the accuracy, reliability or contents of this document. Nokia reserves the right to revise this document or withdraw it at any time without prior notice.

Reverse engineering of software in the device is prohibited to the extent permitted by applicable law. Insofar as this user guide contains any limitations on Nokia's representations, warranties, damages and liabilities, such limitations shall likewise limit any representations, warranties, damages and liabilities of Nokia's licensors.

The availability of products, features, apps and services may vary by region. For more info, contact your Nokia dealer or your service provider. This device may contain commodities, technology or software subject to export laws and regulations from the US and other countries. Diversion contrary to law is prohibited.

FCC NOTICE

This device complies with part 15 of the FCC rules. Operation is subject to the following two conditions: (1) This device may not cause harmful interference, and (2) this device must accept any interference received, including interference that may cause undesired operation. Any changes or modifications not expressly approved by Nokia could void the user's authority to operate this equipment.

Note: This equipment has been tested and found to comply with the limits for a Class B digital device, pursuant to part 15 of the FCC Rules. These limits are designed to provide reasonable protection against harmful interference in a residential installation.

This equipment generates, uses and can radiate radio frequency energy and, if not installed and used in accordance with the instructions, may cause harmful interference to radio communications. However, there is no guarantee that interference will not occur in a particular installation. If this equipment does cause harmful interference to radio or television reception, which can be determined by turning the equipment off and on, the user is encouraged to try to correct the interference by one or more of the following measures:

- Reorient or relocate the receiving antenna.
- Increase the separation between the equipment and receiver.
- Connect the equipment into an outlet on a circuit different from that to which the receiver is connected.
- Consult the dealer or an experienced radio/TV technician for help.