

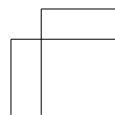
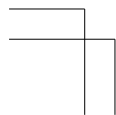
XXX

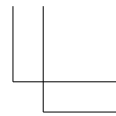
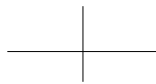
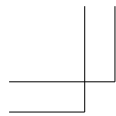


**Welcome to the
XXX**

Issue 1 EN

RM-971





Psst...

This guide isn't all there is...

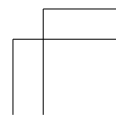
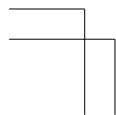
For the online user guide and troubleshooting help, go to www.nokia.com/support.

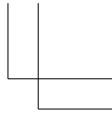
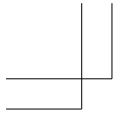
For info on Nokia Service terms and Privacy policy, go to www.nokia.com/privacy.

Contents




Safety	3
Get started	5
Keys and parts	5
Insert SIM, battery, and memory card	6
Charge the battery	9
Lock or unlock the keys	10
Change the volume	11
Basics	12
People & messaging	16
Internet	18
Camera	18
Entertainment	20
Product and safety information	22






Safety


We invite you to read the instructions on this guide before using the device.

 **SWITCH OFF IN RESTRICTED AREAS**
Switch the device off when mobile phone use is not allowed or when it may cause interference or danger, for example, in aircraft, in hospitals or near medical equipment, fuel, chemicals, or blasting areas. Obey all instructions in restricted areas.


 **ROAD SAFETY COMES FIRST**
Obey all local laws. Always keep your hands free to operate the vehicle while driving. Your first consideration while driving should be road safety.


 **INTERFERENCE**
All wireless devices may be susceptible to interference, which could affect performance.

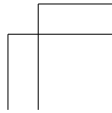
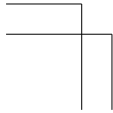
 **QUALIFIED SERVICE**
Only qualified personnel may install or repair this product.

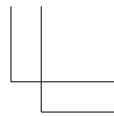
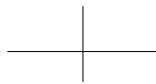
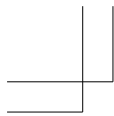
 **BATTERIES, CHARGERS, AND OTHER ACCESSORIES**
Use only batteries, chargers, and other accessories approved by Nokia for use with this device. Do not connect incompatible products.

 **KEEP YOUR DEVICE DRY**
Your device is not water-resistant. Keep it dry.

 **PROTECT YOUR HEARING**
To prevent possible hearing damage, do not listen at high volume levels for long periods. Exercise caution when holding your device near your ear while the loudspeaker is in use.

 **SAR**
This device meets RF exposure guidelines when used either in the normal use position against the ear or when positioned at least 1.5 centimetre (5/8 inch) away from the body. The specific maximum SAR values can be found in the Certification Information



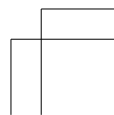
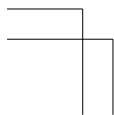


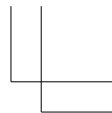
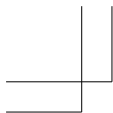
(SAR) section of this user guide. For more info, go to www.sar-tick.com.

When a carry case, belt clip or other form of device holder is used for body-worn operation, it should not contain metal and should provide at least the above-stated separation distance from the body. Note that mobile devices may be transmitting even if you are not making a voice call.



4



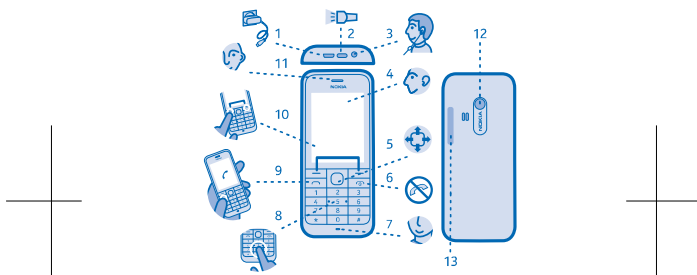


Get started

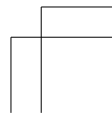
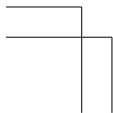
Get to grips with the basics, and have your phone up and running in no time.

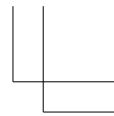
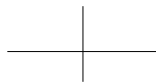
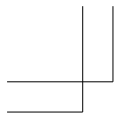
Keys and parts

Explore the keys and parts of your new phone.



- 1 Charger connector
- 2 Flashlight
- 3 Headset connector (3.5 mm)
- 4 Screen
- 5 Scroll key
- 6 End/Power key
- 7 Microphone
- 8 Keypad
- 9 Call key





10 Selection keys

11 Earpiece

12 Camera lens. Before using the camera, remove the protective tape from the lens.

13 Antenna area

Avoid touching the antenna area while the antenna is in use. Contact with antennas affects the communication quality and may reduce battery life due to higher power level during operation.



Do not connect products that create an output signal, as this may damage the device. Do not connect any voltage source to the audio connector. If you connect an external device or headset, other than those approved for use with this device, to the audio connector, pay special attention to volume levels.



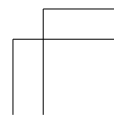
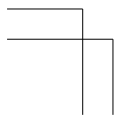
Some of the accessories mentioned in this user guide may be sold separately.

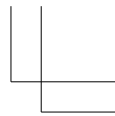
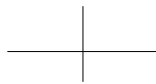
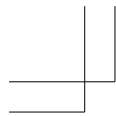
Insert SIM, battery, and memory card

Learn how to insert the battery and SIM and memory cards.

! **Important:** This device is designed to be used with a standard SIM card (see figure) only. Use of incompatible SIM cards may damage the card or the device, and may corrupt data stored on the card. Please

6





consult your mobile operator for the use of a SIM card that has a mini-UICC cutout.



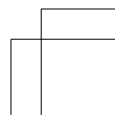
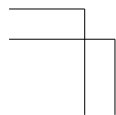
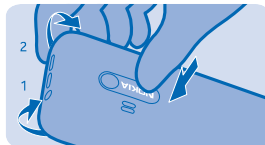
Use only compatible memory cards approved for use with this device. Incompatible cards may damage the card and the device and corrupt data stored on the card.

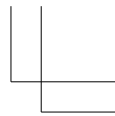
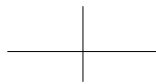
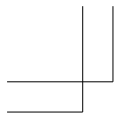


! **Note:** Switch the device off and disconnect the charger and any other device before removing any covers. Avoid touching electronic components while changing any covers. Always store and use the device with any covers attached.



1. Place your thumb on the logo, and pull the top corners one at a time to separate the back cover from the phone.

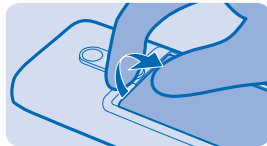




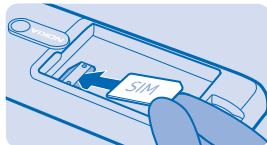
2. Place your fingers at the top middle of the back cover, and with your thumb on the logo, remove the cover.



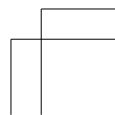
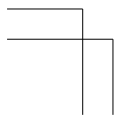
3. If the battery is in the phone, lift it out.

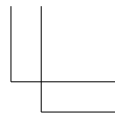
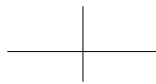
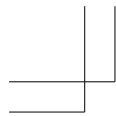


4. Slide the SIM into the holder with the contact area face down.

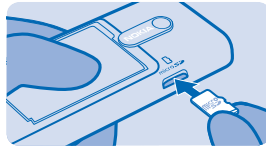


8





5. Line up the battery contacts, and put the battery in.
6. Insert the memory card into the memory card slot. Push the memory card in until it locks into place.



! **Important:** Do not remove the memory card when an app is using it. Doing so may damage the memory card and the device and corrupt data stored on the card.

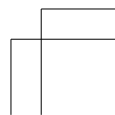
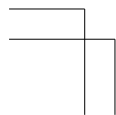


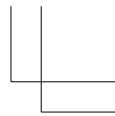
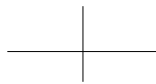
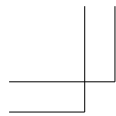
7. Replace the back cover.
- Remove the memory card**
Pull the memory card out.

Switch on your phone
Press and hold the power key.

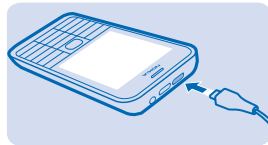
Charge the battery
Your battery has been partially charged at the factory, but you may need to recharge it before you can use your phone.

1. Plug the charger into a wall outlet.





2. Connect the charger to the phone. When done, unplug the charger from the phone, then from the wall outlet.



If the battery is completely discharged, it may take several minutes before the charging indicator is displayed or before any calls can be made.



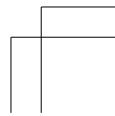
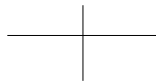
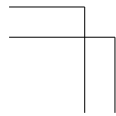
★ **Tip:** You can use USB charging when a wall outlet is not available. Data can be transferred while charging the device. The efficiency of USB charging power varies significantly, and it may take a long time for charging to start and the device to start functioning.

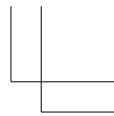
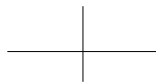
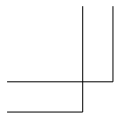
Make sure your computer is switched on.

Lock or unlock the keys

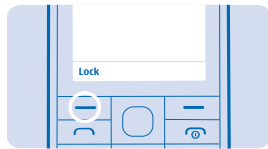
To avoid accidentally pressing the keys, use keypad lock.


1. Quickly press .





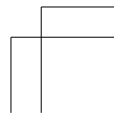
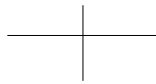
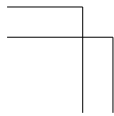
2. Select **Lock**.

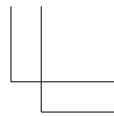
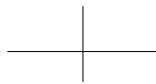
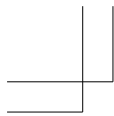


Unlock the keypad
Press , and select **Unlock**.

Change the volume
Trouble hearing your phone ringing in noisy environments, or calls too loud? You can change the volume to your liking.

Scroll up or down to change the volume during a call or when listening to the radio.





Basics

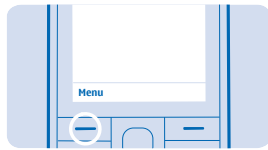
Learn how to get the most out of your new phone.

Explore your phone

Explore your phone with a simple key press.

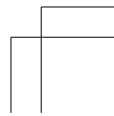
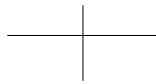
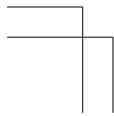
See the apps and features of your phone

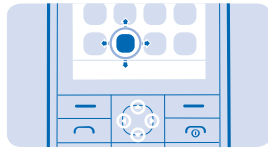
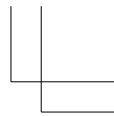
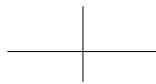
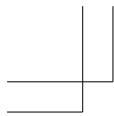
Press **Menu**.



Go to an app or feature

Press the scroll key up, down, left, or right.

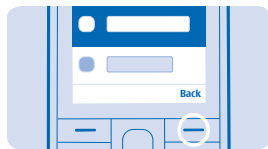




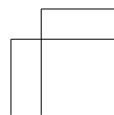
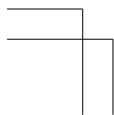
Open an app or select a feature
Press **Choose**.

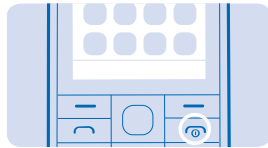
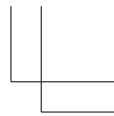
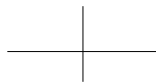
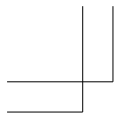


Go back to the previous view
Press **Back**.



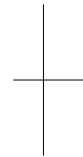
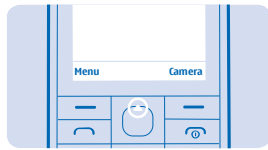
Go back to the home screen
Press **Home**.





Switch the flashlight on

On the home screen, quickly press the scroll key up twice.



To switch the flashlight off, press up once.

Do not shine the light in anyone's eyes.

Write text

Writing with the keypad is easy and fun.

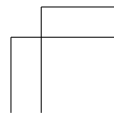
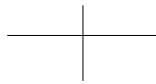
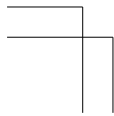
Press a key repeatedly until the letter is shown.

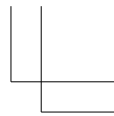
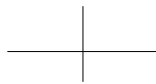
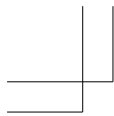
Type in a space

Press 0.

Type in a special character or punctuation mark

Press *.





Switch between character cases

Press # repeatedly.

Type in a number

Press and hold a number key.

Use predictive text

To speed up your writing, your phone can guess what you are starting to write. Predictive text is based on a built-in dictionary. This feature is not available for all languages.

1. Select **Options > Dictionary** and the language.
2. Start writing a word. When the word you want is shown, press **0**.

Change a word

Press * repeatedly until the word you want is shown.

Add a new word to the dictionary

If the word you want isn't in the dictionary, write the word, press * repeatedly to skip all unwanted words, select **Spell**, and write the word.

Switch between predictive and traditional text

Press # repeatedly.

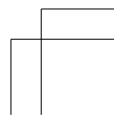
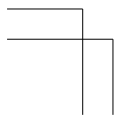
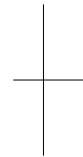
Switch predictive text off

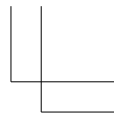
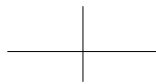
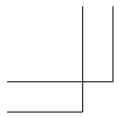
Select **Options > Dictionary > Dictionary off**.

Set the ringtone

Set a ringtone for your phone.

1. Select **Menu > Settings > Tone settings**.
2. Select **Ringtone**.





3. Pick a ringtone, and select **OK**.

People & messaging

Contact your friends and family using your phone. Stay tuned with the latest updates to your social networking services even when on the go.

Make a call


Learn how to make a call with your new phone.

1. Type in the phone number.

To type in the + character, used for international calls, press * twice.

The + character only works from abroad. The + character may not work in all regions. In this case, enter the international access code directly.

2. Press .

3. To end the call, press .

Answer a call

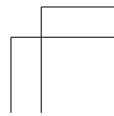
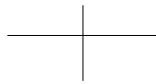
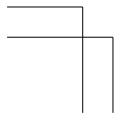
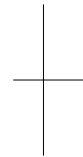
Press .

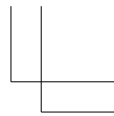
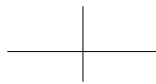
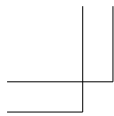
Save a name and phone number

Save and organise your friends' phone numbers. Or why not spice up your contacts list by assigning photos or other info to your contacts?

1. Select **Menu > Contacts > Add**.

2. Write the name, type in the number, and select **Save**.





Send and receive messages

Keep in touch with your friends and family through text messages.

1. Select **Menu > Messaging**.
2. Select **Create message**.
3. Type in a phone number, or select a recipient from your contacts list.
4. Write your message.

★ **Tip:** To insert special characters, such as a smiley or symbol, select **Options > Insert options**.

5. Select **Send**.

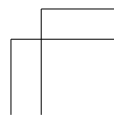
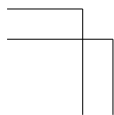
You can send text messages that are longer than the character limit for a single message. Longer messages are sent as two or more messages. Your service provider may charge accordingly. Characters with accents, other marks, or some language options, take more space, and limit the number of characters that can be sent in a single message.

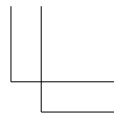
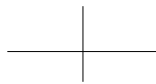
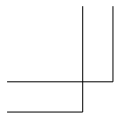
Read a message

On the home screen, select **Read**. To read the rest of the message, select **Open**.

Get social

Want to connect and share stuff with the people in your life? With social apps, you can stay up to date with what's happening with your friends.





To keep in touch with your friends and family, sign in to your instant messaging, sharing, and social networking services. Select **Menu** and the service you want to use. The available services may vary.

Internet

Learn how to browse the web.

Browse the web

Catch up on the news, and visit your favourite websites on the go.

1. Select **Menu** > **Internet**.
2. Select the address bar.
3. Write a web address, and select **OK**.

★ **Tip:** To search the internet, write a search word in the address bar. You can also use the available links.

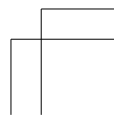
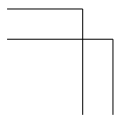
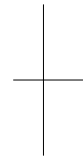
Using services or downloading content may cause the transfer of large amounts of data, which may result in data costs.

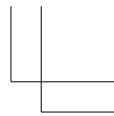
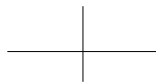
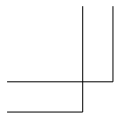
Camera

Why carry a separate camera if your phone has all you need for capturing memories? With your phone camera, you can easily take photos or record videos.

Take a photo

Capture the best moments with your phone camera.










1. To switch the camera on, select **Camera**.
2. To zoom in or out, press the scroll key up or down.
3. To take a photo, press the scroll key.

View the photos you've taken
Select  > **Photos** > **Captured**.

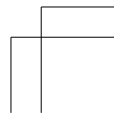
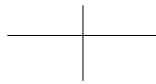
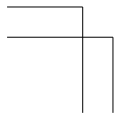
Record a video
Besides taking photos, you can also record videos with your phone.

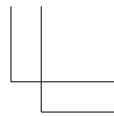
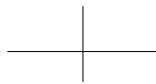
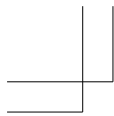
1. To switch the camera on, select **Camera**.
2. To switch the video camera on, select  > **Video camera**.
3. To start recording, select .
4. To stop recording, select .

View the video you've recorded
To view the video right after recording, select .
To view the video later, in the video camera, select  > **Videos** > **Recorded**.

Share a photo or video
Use Slam to quickly share your photos and videos with a friend close by.

1. Select **Photos** and a photo or **Videos** and a video.
2. Select **Options** and **Share photo** or **Share video**.
3. Select **Slam via Bluetooth**.
4. Move your phone close to the other phone, and let Slam share the photo or video.





Operating the device in hidden mode is a safer way to avoid malicious software. Do not accept Bluetooth connection requests from sources you do not trust. You can also switch the Bluetooth function off when you are not using it.

Entertainment

Having a spare moment and in need of entertainment? Learn how to listen to the radio on your phone.

Listen to music

You can listen to your MP3 music files with the music player. To play music, you need to store the music files on a memory card.

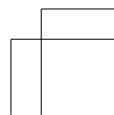
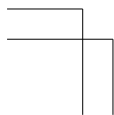
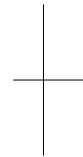
1. Select **Menu > Music > Music player.**
2. Select **Options > All songs.**
3. Select a song.

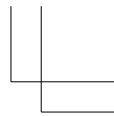
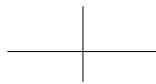
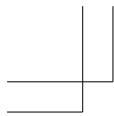
Listen to the radio

Enjoy your favourite FM radio stations on the go.

To listen to the radio, you need to connect a compatible headset to the device. The headset acts as an antenna.

1. Connect a headset, and select **Menu > Music > Radio.**
2. To go to the previous or next channel, scroll left or right.
3. To close the radio, select **Options > Switch off.**





Find and save a radio station

Search for your favourite radio stations, and save them, so you can easily listen to them later.

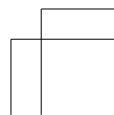
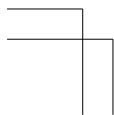
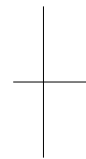
1. Select **Menu > Music > Radio**.
2. Select **Options > Set frequency**.
3. Type in the station frequency.
4. To save a station, select **Options > Save station**.

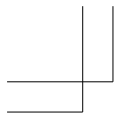
Listen to a saved station

Press the number key that matches the station location.

View the list of saved stations

Select **Options > Stations**.





Feature-specific information

¹ This phone may contain promotional games. The promotion is time-limited and may expire. Please check Nokia store for more info. The end user must access the games download page through the Gift games icon on the main menu or from the Gift banner on Nokia store front page in order to download promotional games. The promotional free download may not happen when accessed directly from Nokia store.

Product and safety information

Network services and costs

You can only use your device on the GSM 850, 1900 MHz networks. You need a subscription with a service provider. Using some features and downloading content require a network connection and may result in data costs. You may also need to subscribe to some features.

Emergency calls

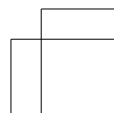
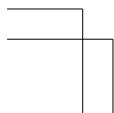
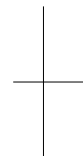
1. Make sure the device is switched on.
2. Check for adequate signal strength.

You may also need to do the following:

- Put a SIM card in the device.
- Switch the call restrictions off in your device, such as call barring, fixed dialling, or closed user group.
- If the device keys are locked, unlock them.

3. Press the end key repeatedly, until the home screen is shown.
4. Type in the official emergency number for your present location. Emergency call numbers vary by location.
5. Press the call key.
6. Give the necessary info as accurately as possible. Do not end the call until given permission to do so.

! **Important:** Activate both cellular and internet calls, if your phone supports internet calls. The phone may attempt to make emergency calls both through cellular networks and through your internet call service provider. Connections in all conditions cannot be guaranteed. Never rely solely on any



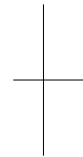


wireless phone for essential communications like medical emergencies.

Take care of your device

Handle your device, battery, charger and accessories with care. The following suggestions help you keep your device operational.

- Keep the device dry. Precipitation, humidity, and all types of liquids or moisture can contain minerals that corrode electronic circuits. If your device gets wet, remove the battery, and let the device dry.
- Do not use or store the device in dusty or dirty areas.
- Do not store the device in high temperatures. High temperatures may damage the device or battery.
- Do not store the device in cold temperatures. When the device warms to its normal temperature, moisture can form inside the device and damage it.
- Do not open the device other than as instructed in the user guide.
- Unauthorised modifications may damage the device and violate regulations governing radio devices.
- Do not drop, knock, or shake the device. Rough handling can break it.
- Only use a soft, clean, dry cloth to clean the surface of the device.
- Do not paint the device. Paint can prevent proper operation.
- For optimal performance, switch the device off and remove the battery from time to time.
- Keep the device away from magnets or magnetic fields.
- To keep your important data safe, store it in at least two separate places, such as your device, memory card, or computer, or write down important info.

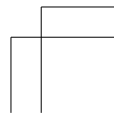
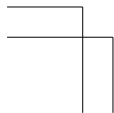


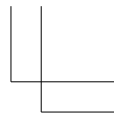
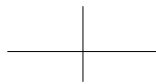
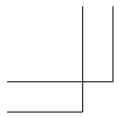
Recycle



When this device has reached the end of its working life, all of its materials can be recovered as materials and energy. For info on how to recycle your old Nokia products and where to find collection sites, go to www.nokia-latinoamerica.com/reciclaje, or call the Nokia Contact Center.

Recycle packaging and user guides at your local recycling scheme.





When you cooperate and deliver all these materials to one of the available collection sites, you contribute in helping the environment and help to ensure the health of future generations. All electrical and electronic products and batteries may contain recyclable metals and other potentially hazardous substances and must be taken to their respective collection sites at the end of their working life. Under no circumstances should you break open a battery or other related materials. Do not dispose of these products as unsorted municipal waste, as this may cause contamination of the environment or risks to human health. All Nokia products are in compliance to the applicable industry international production standards and to all requirements defined by the competent government agencies. For more info on the environmental attributes of your device, see www.nokia.com/ecoprofile (in English).

Battery and charger info

Use your device only with an original BL-5C rechargeable battery. Charge your device with AC-18 charger. Charger plug type may vary. Nokia may make additional battery or charger models available for this device.

Battery and charger safety

Always switch the device off and unplug the charger before removing the battery. To unplug a charger or an accessory, hold and pull the plug, not the cord.

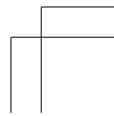
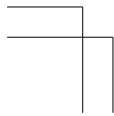
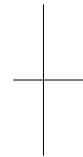
When your charger is not in use, unplug it. If left unused, a fully charged battery will lose its charge over time.

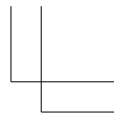
Always keep the battery between 15°C and 25°C (59°F and 77°F) for optimal performance. Extreme temperatures reduce the capacity and lifetime of the battery. A device with a hot or cold battery may not work temporarily.

Accidental short-circuiting can happen when a metallic object touches the metal strips on the battery. This may damage the battery or the other object.

Do not dispose of batteries in a fire as they may explode. Obey local regulations. Recycle when possible. Do not dispose as household waste.

Do not dismantle, cut, crush, bend, puncture, or otherwise damage the battery in any way. If a battery leaks, do not let liquid touch skin or eyes. If this happens, immediately flush the affected areas with water, or seek medical help. Do not modify, attempt to insert foreign





objects into the battery, or immerse or expose it to water or other liquids. Batteries may explode if damaged.
Use the battery and charger for their intended purposes only. Improper use, or use of unapproved or incompatible batteries or chargers may present a risk of fire, explosion, or other hazard, and may invalidate any approval or warranty. If you believe the battery or charger is damaged, take it to a service centre before continuing to use it. Never use a damaged battery or charger. Do not charge your device during a lightning storm. Only use the charger indoors.

Additional safety information

Small children

Your device and its accessories are not toys. They may contain small parts. Keep them out of the reach of small children.

Medical devices

Operation of radio transmitting equipment, including wireless phones, may interfere with inadequately shielded medical devices' function. Consult a physician or the medical device's manufacturer to determine if it is adequately shielded from external radio energy.

Implanted medical devices

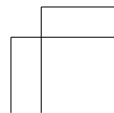
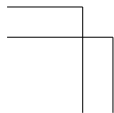
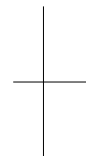
To avoid potential interference, manufacturers of implanted medical devices recommend a minimum separation of 15.3 centimetres (6 inches) between a wireless device and the medical device. Persons who have such devices should:

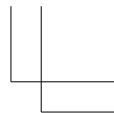
- Always keep the wireless device more than 15.3 centimetres (6 inches) from the medical device.
- Not carry the wireless device in a breast pocket.
- Hold the wireless device to the ear opposite the medical device.
- Switch the wireless device off if there is any reason to suspect that interference is taking place.
- Follow the manufacturer directions for the implanted medical device.

If you have any questions about using your wireless device with an implanted medical device, consult your health care provider.


Accessibility solutions

Nokia is committed to making mobile phones easy to use for all individuals, including those with disabilities. For more information, visit the Nokia website at www.nokiaaccessibility.com (in English).





Hearing

 **Warning:** When you use the headset, your ability to hear outside sounds may be affected. Do not use the headset where it can endanger your safety.

Some wireless devices may interfere with some hearing aids.

Nickel

The surface of this device is nickel-free.

Vehicles

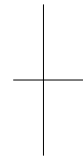
Radio signals may affect improperly installed or inadequately shielded electronic systems in vehicles. For more info, check with the manufacturer of your vehicle or its equipment.

Only qualified personnel should install the device in a vehicle. Faulty installation may be dangerous and invalidate your warranty. Check regularly that all wireless device equipment in your vehicle is mounted and operating properly. Do not store or carry flammable or explosive materials in the same compartment as the device, its parts, or accessories. Do not place your device or accessories in the air bag deployment area.



Potentially explosive environments

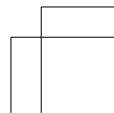
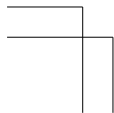
Switch your device off in potentially explosive environments, such as near petrol pumps. Sparks may cause an explosion or fire resulting in injury or death. Note restrictions in areas with fuel; chemical plants; or where blasting operations are in progress. Areas with a potentially explosive environment may not be clearly marked. These usually are areas where you are advised to switch your engine off, below deck on boats, chemical transfer or storage facilities, and where the air contains chemicals or particles. Check with the manufacturers of vehicles using liquefied petroleum gas (such as propane or butane) if this device can be safely used in their vicinity.

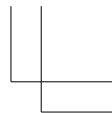
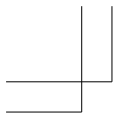


Certification information (SAR)

This mobile device meets international guidelines for exposure to radio waves.

Your mobile device is a radio transmitter and receiver. It is designed not to exceed the limits for exposure to radio waves (radio frequency electromagnetic fields), recommended by international guidelines from the independent scientific organization ICNIRP. These guidelines incorporate substantial safety margins that are intended to assure the protection of all persons regardless of age and health.



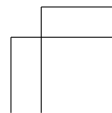
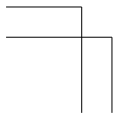


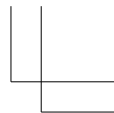
The exposure guidelines are based on the Specific Absorption Rate (SAR), which is an expression of the amount of radio frequency (RF) power deposited in the head or body when the device is transmitting. The ICNIRP SAR limit for mobile devices is 2.0 W/kg averaged over 10 grams of tissue. SAR tests are carried out with the device in standard operating positions, transmitting at its highest certified power level, in all its frequency bands. The maximum recorded SAR values for this device are:

	Maximum SAR value	Frequency bands used when Maximum SAR value was recorded
When held against the head	X.XX W/kg over 10g	X.XX W/kg
When operated at a separation distance of 1.5 centimetre (5/8 inch) from the body	X.XX W/kg over 10g	X.XX W/kg



Your mobile device is also designed to meet the United States Federal Communications Commission (FCC) guidelines. FCC ratings for your device and more information on SAR can be found at transition.fcc.gov/oet/rfsafety/sar.html. This device meets RF exposure guidelines when used against the head or when positioned at least 1.5 centimetre (5/8 inch) away from the body. When a carry case, belt clip or other form of device holder is used for body-worn operation, it should not contain metal and should provide at least the above stated separation distance from the body. To send data or messages, a good connection to the network is needed. Sending may be delayed until such a connection is available. Follow the separation distance instructions until the sending is finished. During general use, the SAR values are usually well below the values stated above. This is because, for purposes of system efficiency and





to minimise interference on the network, the operating power of your mobile is automatically decreased when full power is not needed for the call. The lower the power output, the lower the SAR value. Device models may have different versions and more than one value. Component and design changes may occur over time and some changes could affect SAR values. The latest available SAR information for this and other Nokia device models can be found at www.nokia.com/sar.

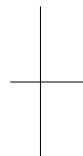
The World Health Organization (WHO) has stated that current scientific information does not indicate the need for any special precautions when using mobile devices. If you are interested in reducing your exposure, they recommend you limit your usage or use a hands-free kit to keep the device away from your head and body. For more information and explanations and discussions on RF exposure, go to the WHO website at www.who.int/peh-emf/en.



Nokia Care

To get warranty and technical support services (including guidance to solve common problems, please contact Nokia at www.nokia.com/support.

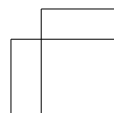
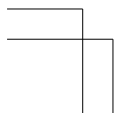
If you cannot access Internet, please contact the retailer where you bought your Nokia device. There you will find guidance on how to handle your inquiry.

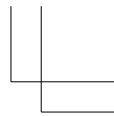
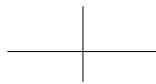
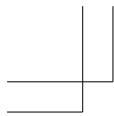


Electrical information of the device

This information applies only in Mexico.

Product	Mobile phone
Supplier	Nokia
Model	RM-971
Charger	AC-18U The following electrical characteristics apply for NOKIA U chargers only.
Input	100-240Vca, 50-60Hz, 100mA





Output	5 Vcc, 550 mA
Rechargeable battery supplier	Nokia
Phone power consumption	3,7 Vcc

Copyrights and other notices

The availability of products, features, apps and services may vary by region. Nokia may, in its sole discretion, change, correct or discontinue any of its services in whole or in part. For more info, contact your Nokia dealer or your service provider. This device may contain commodities, technology or software subject to export laws and regulations from the US and other countries. Diversion contrary to law is prohibited.

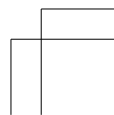
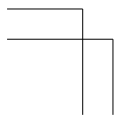
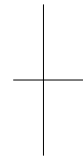
The contents of this document are provided "as is". Except as required by applicable law, no warranties of any kind, either express or implied, including, but not limited to, the implied warranties of merchantability and fitness for a particular purpose, are made in relation to the accuracy, reliability or contents of this document. Nokia reserves the right to revise this document or withdraw it at any time without prior notice.

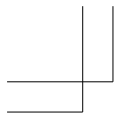
To the maximum extent permitted by applicable law, under no circumstances shall Nokia or any of its licensors be responsible for any loss of data or income or any special, incidental, consequential or indirect damages howsoever caused.

Reproduction, transfer or distribution of part or all of the contents in this document in any form without the prior written permission of Nokia is prohibited. Nokia operates a policy of continuous development. Nokia reserves the right to make changes and improvements to any of the products described in this document without prior notice.

Nokia does not make any representations, provide a warranty, or take any responsibility for the functionality, content, or end-user support of third-party apps provided with your device. By using an app, you acknowledge that the app is provided as is.

Downloading of maps, games, music and videos and uploading of images and videos may involve transferring large amounts of data. Your service provider may charge for the data transmission. The availability of particular products, services and features may vary by





region. Please check with your local Nokia dealer for further details and availability of language options.

FCC/MEXICO NOTICE

This device complies with part 15 of the FCC rules. Operation is subject to the following two conditions: (1) This device may not cause harmful interference, and (2) this device must accept any interference received, including interference that may cause undesired operation. For more info, go to transition.fcc.gov/oet/rfsafety/rf-faqs.html. Any changes or modifications not expressly approved by Nokia could void the user's authority to operate this equipment.

Note: This equipment has been tested and found to comply with the limits for a Class B digital device, pursuant to part 15 of the FCC Rules. These limits are designed to provide reasonable protection against harmful interference in a residential installation. This equipment generates, uses and can radiate radio frequency energy and, if not installed and used in accordance with the instructions, may cause harmful interference to radio communications. However, there is no guarantee that interference will not occur in a particular installation. If this equipment does cause harmful interference to radio or television reception, which can be determined by turning the equipment off and on, the user is encouraged to try to correct the interference by one or more of the following measures:

- Reorient or relocate the receiving antenna.
- Increase the separation between the equipment and receiver.
- Connect the equipment into an outlet on a circuit different from that to which the receiver is connected.
- Consult the dealer or an experienced radio/TV technician for help.

TM & © 2014 Nokia. All rights reserved. Third party products/names may be TMs of their respective owners. The Bluetooth word mark and logos are owned by the Bluetooth SIG, Inc. and any use of such marks by Nokia is under license. This product is licensed under the MPEG-4 Visual Patent Portfolio License (i) for personal and noncommercial use in connection with information which has been encoded in compliance with the MPEG-4 Visual Standard by a consumer engaged in a personal and noncommercial activity and (ii) for use in connection with MPEG-4 video provided by a licensed video provider. No license is granted or shall be implied for any other use. Additional information, including that related to promotional, internal, and commercial uses, may be obtained from MPEG LA, LLC. See www.mpegla.com (in English).

