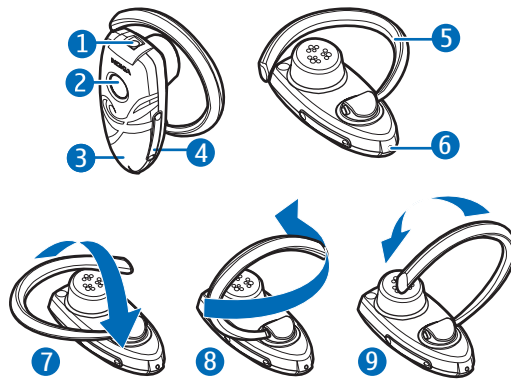


Nokia Bluetooth Headset BH-302




9253602/1

ENGLISH

DECLARATION OF CONFORMITY

Hereby, NOKIA CORPORATION declares that this HS-73W product is in compliance with the essential requirements and other relevant provisions of Directive 1999/5/EC. A copy of the Declaration of Conformity can be found at http://www.nokia.com/phones/declaration_of_conformity/.

CE 0889

 The crossed-out wheeled bin means that within the European Union the product must be taken to separate collection at the product end-of-life. Do not dispose of these products as unsorted municipal waste.

© 2006 Nokia. All rights reserved.
Reproduction, transfer, distribution or storage of part or all of the contents in this document in any form without the prior written permission of Nokia is prohibited.
Nokia and Nokia Connecting People are registered trademarks of Nokia Corporation.
Other product and company names

mentioned herein may be trademarks or tradenames of their respective owners.
Bluetooth is a registered trademark of Bluetooth SIG, Inc.

Nokia operates a policy of continuous development. Nokia reserves the right to make changes and improvements to any of the products described in this document without prior notice.

Under no circumstances shall Nokia be responsible for any loss of data or income or any special, incidental, consequential or indirect damages howsoever caused.

The contents of this document are provided "as is". Except as required by applicable law, no warranties of any kind, either express or implied, including, but not limited to, the implied warranties of merchantability and fitness for a particular purpose, are made in relation to the accuracy, reliability or contents of this document. Nokia reserves the right to revise this document or withdraw it at any time without prior notice.
The availability of particular products may vary by region. Please check with the Nokia dealer nearest to you.



ENGLISH



Unauthorized changes or modifications to this device may void the user's authority to operate the equipment.
Export Controls
This device may contain commodities,

technology or software subject to export laws and regulations from the US and other countries. Diversion contrary to law is prohibited.

Introduction

The Nokia Bluetooth Headset BH-302 allows you to make and receive calls while on the move. You can use the headset with compatible phones that support Bluetooth wireless technology.

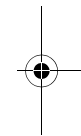
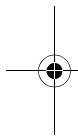
Read this user guide carefully before using the headset. Also read the user guide for your phone, which provides important safety and maintenance information. Keep the headset out of reach of small children.

Bluetooth wireless technology

Bluetooth wireless technology allows you to connect compatible devices

without cables. A Bluetooth connection does not require that the phone and the headset be in line of sight, but both devices should be within 10 meters (30 feet) of each other. Connections may be subject to interference from obstructions, such as walls, or other electronic devices.

The headset complies with the Bluetooth Specification 2.0 + EDR that supports the Headset Profile 1.0 and Handsfree Profile 1.5. Check with the manufacturers of other devices to determine their compatibility with this device.




ENGLISH

There may be restrictions on using Bluetooth technology in some locations. Check with your local authorities or service provider.

Get started

The headset contains the following parts shown on the title page: green indicator light (1), multifunction key (2), microphone (3), volume keys (4), earloop (5), and charger connector (6).

Before using the headset, you must charge the battery and pair the headset with a compatible phone.

 **Note:** Parts of the headset are magnetic. Metallic materials may be attracted to the headset. Do not place credit cards or other magnetic storage media near the headset, because information stored on them may be erased.

Chargers

Check the model number of any charger before using it with this device. The

headset is intended for use with the AC-3, AC-4, and DC-4 chargers.



Warning: Use only chargers approved by Nokia for use with this particular

enhancement. The use of any other types may invalidate any approval or warranty and may be dangerous.

For availability of approved enhancements, please check with your dealer. When you disconnect the power cord of any enhancement, grasp and pull the plug, not the cord.

Charge the battery

The headset has an internal, nonremovable, rechargeable battery. Do not attempt to remove the battery

ENGLISH

from the device, as you may damage the device.

1. Connect the charger to a wall outlet.
2. Connect the charger cable to the charger connector. The indicator light is on while charging. It may take a while before charging starts. If charging does not start, disconnect the charger, plug it in again, and retry. Charging the battery fully may take up to 2 hours 30 minutes.
3. When the battery is fully charged, the indicator light turns off. Disconnect the charger from the headset and the wall outlet.

The fully charged battery has power for up to 8 hours of talk-time or up to 160 hours of standby time. However, the talk and standby times may vary when used with different mobile phones or other compatible Bluetooth

devices, usage settings, usage styles, and environments.

When battery power is low, the indicator light flashes quickly.

Switch the headset on or off

To switch on, press and hold the multifunction key until the indicator light is displayed.

To switch off, press and hold the multifunction key until the indicator light briefly flashes several times and turns off.

Pair the headset

1. Ensure that your phone is switched on and that the headset is switched off.
2. Press and hold the multifunction key (for about 8 seconds) until the indicator light is continuously displayed.

ENGLISH

3. Activate the Bluetooth feature on the phone, and set the phone to search for Bluetooth devices. separately after pairing. You only need to pair the headset with your phone once.
4. Select the headset from the list of found devices. If the pairing is successful, the indicator light briefly flashes five times, and the headset appears in the phone menu where you can view the currently paired Bluetooth devices.
5. Enter the passcode **0000** to pair and connect the headset to your phone. In some phones you may need to make the connection The headset is now ready for use.

Basic use

Wear the headset

Slide the earloop behind your ear, and point the headset toward your mouth. To use the headset on the left ear, gently flip and rotate the earloop as shown in Figures 7, 8, and 9.

Call handling

To make a call, use your phone in the normal way when the headset is connected to your phone.

If your phone supports last number redialing with the headset, press and hold the multifunction key (when no call is in progress) until you hear a beep.

If your phone supports voice dialing with the headset, briefly press the multifunction key when no call in progress, and proceed as described in the user guide of your phone.



ENGLISH



To answer or end a call, briefly press the multifunction key. If you do not want to answer the call, press and hold the multifunction key.

To adjust the earphone volume, press either volume key.

Battery information

Your device is powered by a rechargeable battery. The battery can be charged and discharged hundreds of times, but it will eventually wear out. Recharge your battery only with Nokia approved chargers designated for this device.

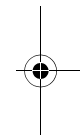
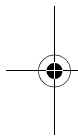
Unplug the charger from the electrical plug and the device when not in use. Do not leave a fully charged battery connected to a charger, since overcharging may shorten its lifetime. If left unused, a fully charged battery will lose its charge over time.

Never use any charger that is damaged.

Leaving the device in hot or cold places, such as in a closed car in summer or winter conditions, will reduce the

capacity and lifetime of the battery. Always try to keep the battery between 15°C and 25°C (59°F and 77°F). A device with a hot or cold battery may not work temporarily, even when the battery is fully charged. Battery performance is particularly limited in temperatures well below freezing.

Do not dispose of batteries in a fire as they may explode. Batteries may also explode if damaged. Dispose of batteries according to local regulations. Please recycle when possible. Do not dispose as household waste.



ENGLISH

Care and maintenance

Your device is a product of superior design and craftsmanship and should be treated with care. The suggestions below will help you protect your warranty coverage.

- Keep all accessories and enhancements out of the reach of small children.
- Keep the device dry. Precipitation, humidity, and all types of liquids or moisture can contain minerals that will corrode electronic circuits. If your device does get wet, allow it to dry completely.
- Do not use or store the device in dusty, dirty areas. Its moving parts and electronic components can be damaged.
- Do not store the device in hot areas. High temperatures can shorten the life of electronic devices, damage

batteries, and warp or melt certain plastics.

- Do not store the device in cold areas. When the device returns to its normal temperature, moisture can form inside the device and damage electronic circuit boards.
- Do not attempt to open the device.
- Do not drop, knock, or shake the device. Rough handling can break internal circuit boards and fine mechanics.
- Do not use harsh chemicals, cleaning solvents, or strong detergents to clean the device.
- Do not paint the device. Paint can clog the moving parts and prevent proper operation.

All of the above suggestions apply equally to your device, battery, charger, or any enhancement. If any device is not

ENGLISH

working properly, take it to the nearest authorized service facility for service.

FCC/Industry Canada notice

This device complies with Part 15 of the FCC Rules. Operation is subject to the following two conditions: 1. This device may not cause harmful interference; and 2. This device must accept any interference received, including interference that may cause undesired operation. This equipment has been tested and found to comply with the limits for a Class B digital device, pursuant to Part 15 of the FCC Rules. These limits are designed to provide reasonable protection against harmful interference in a residential installation. This equipment generates, uses and can radiate radio frequency energy and, if not installed and used in accordance with the instructions, may cause harmful interference to radio communications. However, there is no guarantee that interference will not occur in a particular installation. If this equipment does cause

harmful interference to radio or television reception, which can be determined by turning the equipment off and on, the user is encouraged to try to correct the interference by one or more of the following measures: Reorient or relocate the receiving antenna. Increase the separation between the equipment and receiver. Connect the equipment into an outlet on a circuit different from that to which the receiver is connected. Consult the dealer or an experienced radio/TV technician for help. NOTE: FCC Radiation Exposure Statement: This equipment complies with FCC radiation exposure limits set forth for an uncontrolled environment. This transmitter must not be co-located or operating in conjunction with any other antenna or transmitter. NOTE: Changes or modifications not expressly approved by Nokia could void the user's authority to operate the equipment.