

# **EXHIBIT 4**

## **User Manual**



# Microtek Scanner Installation Guide for SlimScan C6

WINDOWS 98



## Basic Requirements

- Pentium (or compatibles) with built-in USB supported BIOS system
- Windows 98
- CD-ROM drive (internal or external)
- 16MB RAM
- At least 40MB hard disk with 15MB available
- Super VGA Color display with 256 colors or better

**Important Note:** Before using the scanner and software, you should read this Microtek Scanner Installation Guide first.

## Unpack your scanner and check components

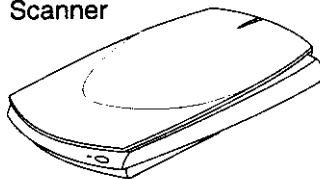
### Contents

Unpack your scanner and check components .....	1
Installing under Windows 98 .....	2
Step 1 Verify the presence of USB .....	2
Step 2 Connect the scanner to your computer .....	2
Step 3 Test your scanner .....	5
Troubleshooting .....	6
Federal Communications Commission (FCC) Statement .....	8
Specifications .....	9

Open your scanner package and check the components as stated in your packing list. Do Not install any of the software until the hardware has been installed.

Before proceeding any further, check that you have all the illustrated items below.

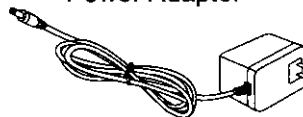
Scanner



USB Cable



Power Adapter



CD-ROM

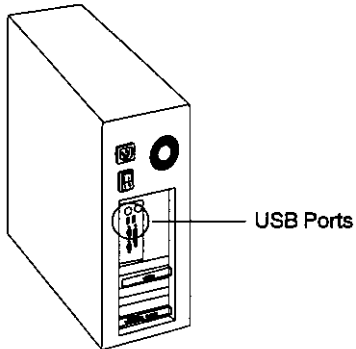


## Installing under Windows 98

### 1. Verify the presence of USB

Turn on your computer and check to see if USB is implemented.

Visually inspect the USB ports of your computer.



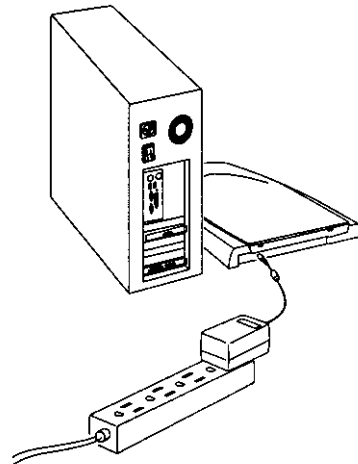
If you cannot find the USB ports at the back of your computer, read the documentation that came with your computer main board. If the USB connector is available, though unwired, you need to purchase an USB cable that connects one end to your main board, another end to the extension bracket.

**For computer main board with USB supported:** To enter BIOS settings and enable USB, see the documentation that came with your computer. Normally when the computer power is turned on, before starting Windows 98, the computer will hint you to press some keys for displaying BIOS menu.

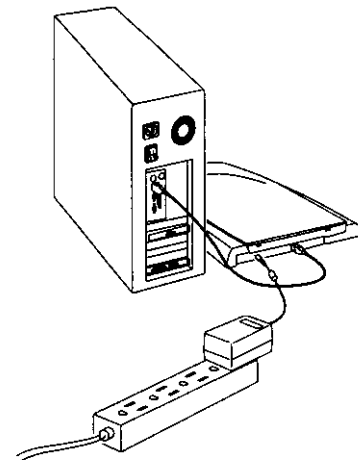
**For computer main board without USB supported:** In this case, USB can be implemented by an USB add-on card. The BIOS settings for main board type USB are not required.

### 2. Connect the scanner to your computer

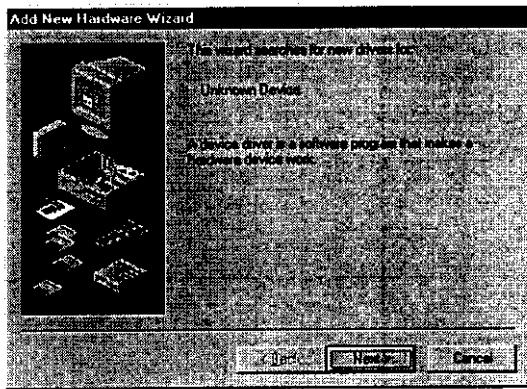
1. Connect 12VDC power connector to your SlimScan C6.



2. Connect USB connector to your PC, another end to your SlimScan C6.

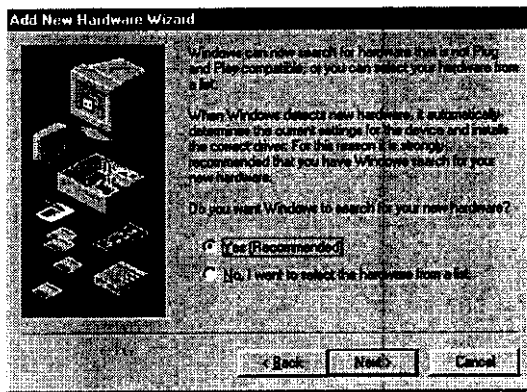


- An Unknown Device message appears, asking you to search a new device.

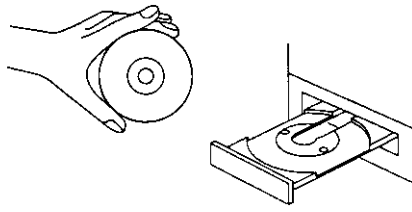


Click Next to continue.

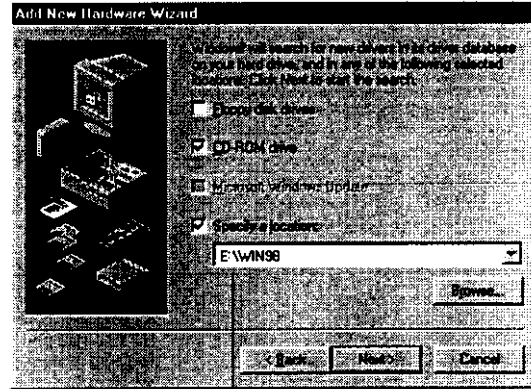
- Click "Search for the best driver for your device (Recommended)." to start searching.



- Insert the Microtek CD-ROM into your CD-ROM drive.



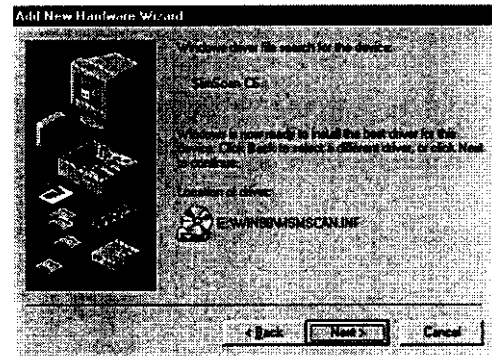
- From the "Add New Hardware Wizard" dialog box, click "Next" to display the following screen.

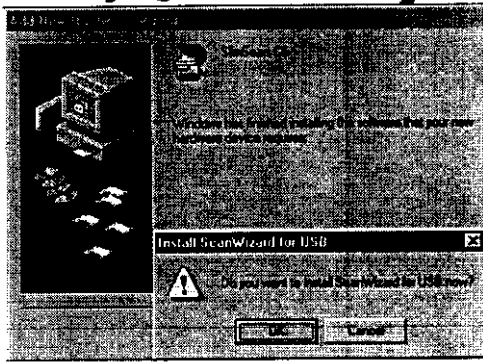


Letter "E" indicates the location of your CD-ROM drive.

On the above screen, E:\ indicates the default CD-ROM drive location. Click Browse if your CD-ROM drive is elsewhere. Click Next to continue.

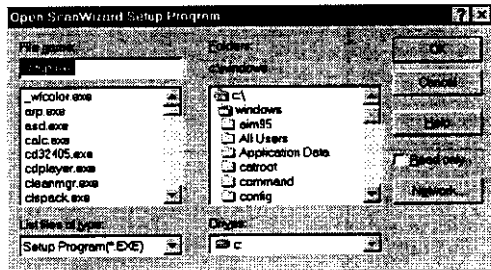
- Your scanner is automatically detected. Click Next to continue.



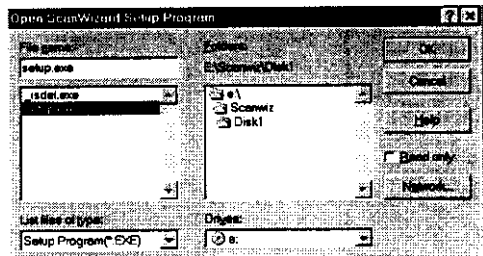


Click OK to prepare installing ScanWizard driver program.

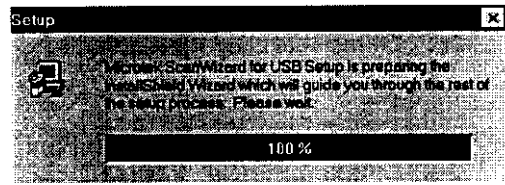
- The screen shows you the **setup.exe** program in your Windows directory. You should NOT click on the OK button at this time. Instead, click the Drives selection to choose the CD-ROM.



- Locate the correct **setup.exe** program, which is under **E:\Scanwiz\Disk1** directory.



- Click OK to continue.



ScanWizard Installation has begun.

Microtek ScanWizard is the Twain driver used for the scanner to communicate with various applications. ScanWizard cannot be used by itself and requires another program in order to work.

Follow screen instructions to complete installation. When installation is complete, **Microtek ScanWizard for Windows 98** appears as a folder on the Programs menu.

- Install application programs

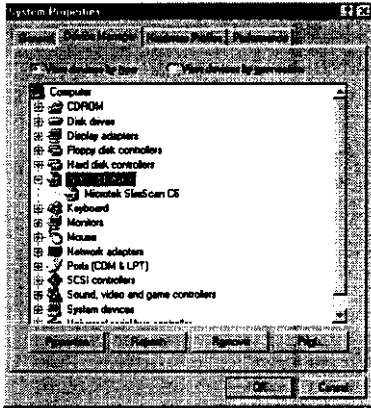
Install each application software by clicking on the individual program options.

- Install documentation reader

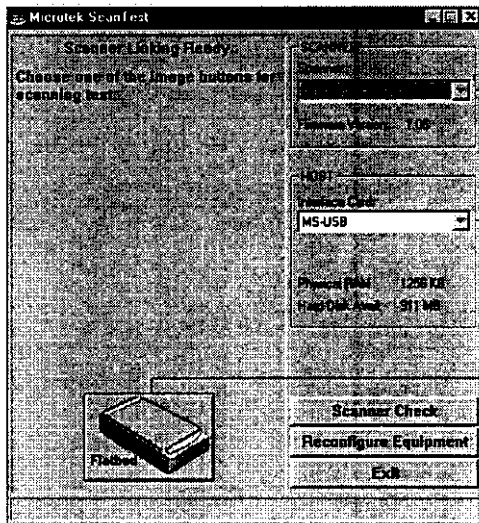
Click **Adobe Acrobat Reader**, then follow screen instructions until installation is complete. Acrobat Reader is available for reading the manuals on your CD-ROM.

### 3. Test your scanner

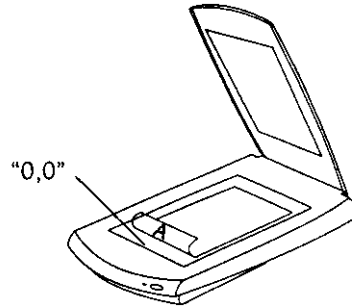
1. Restart Windows 98. Click Start, Settings, and select Control Panel.
2. Double-click on the System icon in Control Panel, then select Device Manager from the top.
3. Double-click on "Microtek USB Scanner", you can find "SlimScan C6" is listed. The scanner is ready to scan.



4. Start up Scanner Test from the Microtek ScanWizard for Windows 98 folder in the Programs menu. When started up successfully, the screen below appears.



5. Place your document face down on the scanner glass. The top left corner of the document should be at the "0,0" position on the ruler guides running alongside the scanner.



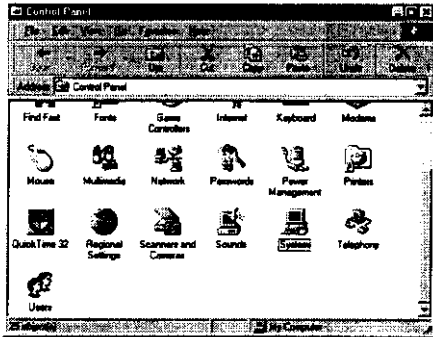
6. Click the Flatbed button.
7. A preview of your image will be displayed in the Microtek ScanTest window.
8. Close and exit Microtek ScanTest.
9. To scan the document, start up your software application to bring up the Microtek ScanWizard, click on the Scan button in the Preview window. The image will be scanned and delivered to your software application, where it can be saved as a file.

For more details on how to operate your scanner with Microtek ScanWizard, refer to the *Microtek ScanWizard Reference Manual* in your CD-ROM.

# Troubleshooting

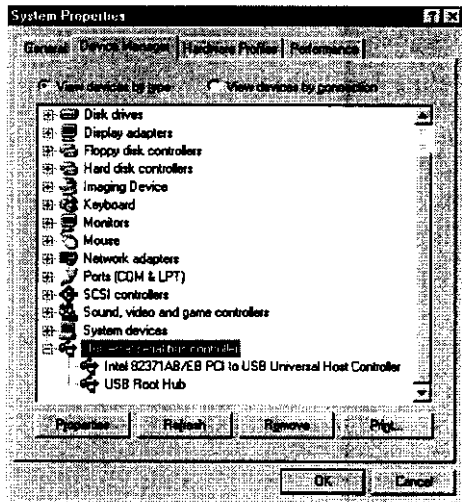
If Windows 98 cannot detect USB device, follow the steps below.

1. Restart Windows 98. Select Start, Settings, and Control Panel. Double-click the System icon.

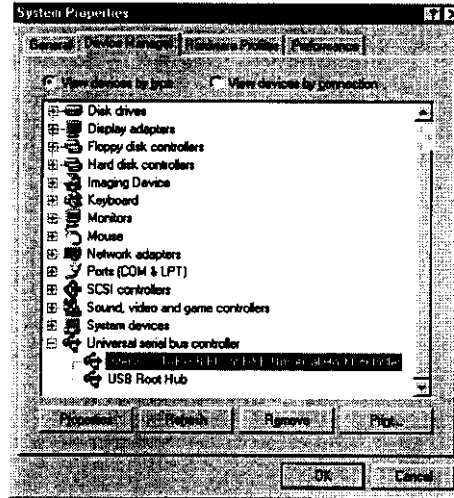


The System Properties dialog box appears. Click the Device Manager tab.

Double-click "Universal serial bus controller" to display two-line messages: "Intel 82371AB PCI to USB Universal Host Controller" and "USB Root Hub".



If a yellow attention mark appears in front of the "Intel 82371AB PCI to USB Universal Host Controller" string, this means the driver — Intel 82371AB driver is not automatically installed.



For example, your computer is shown as the above figure. You have two solutions to approach:

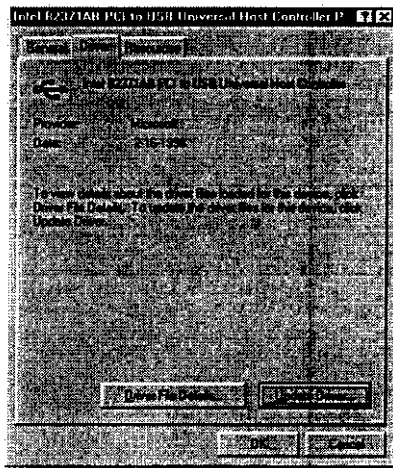
## Solution 1: Automatic setting

1. Select "Intel 82371AB PCI to USB Universal Host Controller".
2. Click the **Remove** button.
3. Restart Windows 98. Your computer should be able to detect the presence of SlimScan C6 USB scanner.

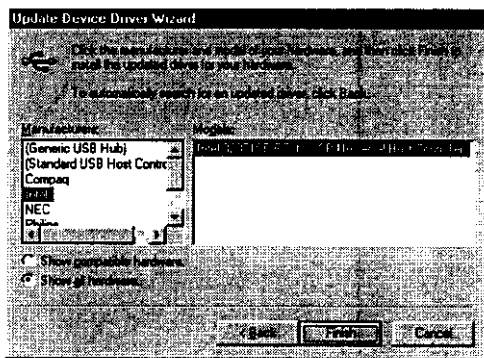
## Solution 2: Manual setting

1. Select "Intel 82371AB PCI to USB Universal Host Controller".
2. Click the **Remove** button.

- To fix the problem, double-click the "Universal serial bus controller" string to display the following dialog box.



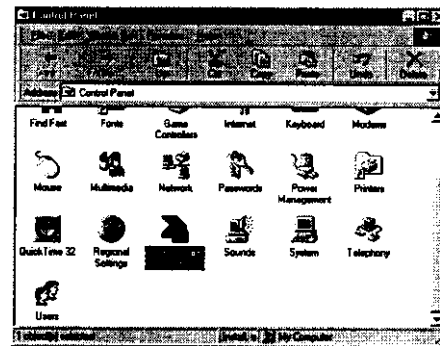
- Click "Update Driver" to display the driver selection dialog box.



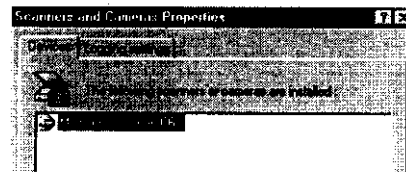
- At the left column, select "Intel"; the message "Intel 82371AB PCI to USB Universal Host Controller" will appear at the right column. Click **Finish** to exit.
- Restart Windows 98. Your computer should be able to detect the presence of SlimScan C6 USB scanner.

To check the availability of SlimScan C6 USB scanner:

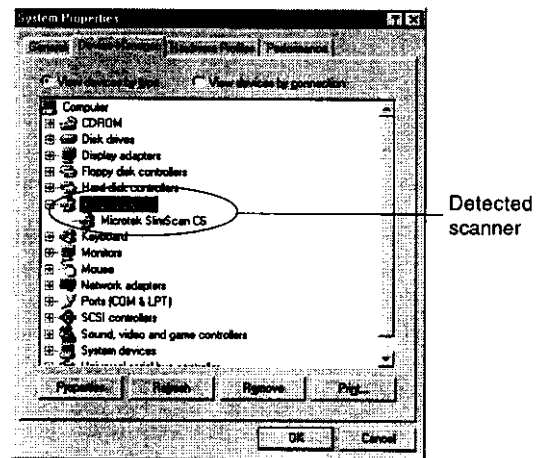
**Option 1:** Check it by clicking the "Scanners and Cameras" icon in the Control Panel dialog box.



The detected scanner is displayed in the "Scanners and Cameras Properties" dialog box.



**Option 2:** Check it by clicking the "System" icon in the Control Panel dialog box. Then click the Device Manager tab. The detected scanner is displayed in the Image Device item.





**Federal Communications Commission (FCC) Statement**

This equipment has been tested and found to comply with the limits for a Class B digital device, pursuant to Part 15 of the FCC Rules. These limits are designed to provide reasonable protection against harmful interference in a residential installation. This equipment generates, uses and can radiate radio frequency energy and, if not installed and used in accordance with the instructions, may cause harmful interference to radio communications. However, there is no guarantee that interference will not occur in a particular installation. If this equipment does cause harmful interference to radio or television reception, which can be determined by turning the equipment off and on, the user is encouraged to try to correct the interference by one or more of the following measures:

- Reorient/relocate the receiving antenna.
- Increase the separation between the equipment and receiver.
- Connect the equipment into an outlet on a circuit different from that to which the receiver is connected.
- Consult the dealer or an experienced radio/TV technician for help.

*Note: Shielded interface cable with ferrite core installed on scanner connector end must be used with this equipment.*

**Trade Name**

SlimScan C6

**Model Name**

MCS-1200U

**CAUTION**

Changes or modifications not expressly approved by the manufacturer responsible for compliance could void the user's authority to operate the equipment.

## Specifications

Trade Name	SlimScan C6 USB
Model number	MCS-1200U
Type	Desktop, Flatbed, Single pass
Optical Resolution	600 dpi (H) x 1200dpi (V)
Sample depth	12 bits per color with Color Correction Technology
Calibration time	gray: 3 sec. color: 6 sec. gray/color: 20 sec. (power on first time)
Scanning speed	in speed mode line/gray: 5 ms /line color: 15 ms /line in quality mode line/gray: 6 ms /line color: 18 ms /line
Transmission speed	Preview: <18s, Letter size 1 Mbyte/s
Scanning Area Min. Max.	1 line, 2 pixels (gray and color), 16 pixels (line-art) 215 mm x 295 mm (8.5" x 11.6")
Warm up time	15 sec.
Power Supply	100 V to 120 V
Voltage Frequency	47 Hz to 63 Hz
Power Consumption	DC 12V/1A 12W max.
Dimensions	10.4" x 1.7" x 16.4"
Weight	approx. 2.3 kg

(13) DELTA POWER ADAPTER (Mode2)

(14) INNER POWER ADAPTER (Mode2)