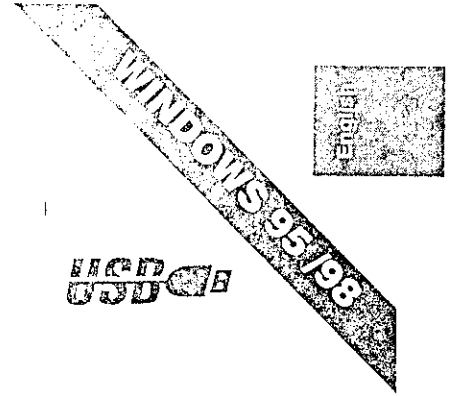


*EXHIBIT 5*

*User's Manual*

*User's Manual*

# Microtek Scanner Installation Guide for SlimScan C3 USB



## Basic Requirements

- Pentium (or compatibles) with built-in USB supported BIOS system
- Microsoft Windows 95 USB implemented OSR2 version 2.1; Windows 98
- CD-ROM drive (internal or external)
- 16MB RAM
- At least 40MB hard disk with 15MB available
- Super VGA Color display with 256 colors or better

**Important Note:** Before using the scanner and software, you should read this Microtek Scanner Installation Guide first.

## Unpack your scanner and check components

### Contents

Unpack your scanner and check components ..... 1

Installing under Windows 95 ..... 2

    Step 1 Connect the scanner to your computer ..... 2

    Step 2 Install the scanner software ..... 3

    Step 3 Test your scanner ..... 4

Troubleshooting ..... 5

Installing under Windows 98 ..... 7

    Step 1 Connect the scanner to your computer ..... 7

    Step 2 Install the scanner software ..... 9

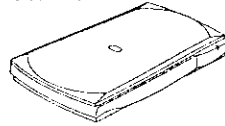
    Step 3 Test your scanner ..... 9

Troubleshooting ..... 10

Open your scanner package and check the components as stated in your packing list. Do Not install any of the software until the hardware has been installed.

Before proceeding any further, check that you have all the illustrated items below.

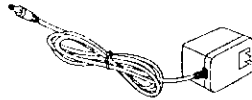
Scanner



USB Cable



Power Adapter



CD-ROM

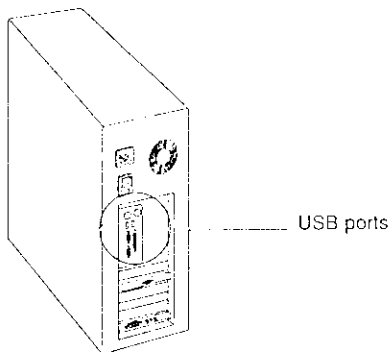


## Installing under Windows 95

### 1. Connect the scanner to your computer

1. Verify the presence of USB.

Turn on your computer and check to see if your computer is USB implemented. Visually inspect the USB ports of your computer.



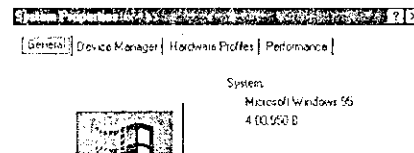
If you cannot find the USB ports at the back of your computer, read the documentation that came with your computer main board. If the USB connector is available, though unwired, you need to purchase an USB wire cable that connects one end to your main board, another end to the extension bracket.

**For computer main board with USB supported:** This is configured in your system BIOS. To enter BIOS settings and enable USB, see the documentation that came with your computer. Normally when the computer power is turned on, before starting Windows 95, the computer will hint you to press some keys for displaying BIOS menu.

**For computer main board without USB supported:** In this case, USB can be implemented by an USB add-on card. The BIOS settings for main board type USB are not required.

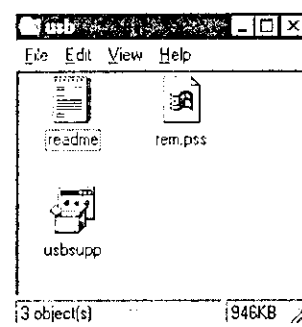
2. Visually inspect your Windows 95 OSR2 2.1 CD-ROM is USB implemented. The message "USB implemented" or "USB supported" is printed on the CD-ROM artwork.

To verify whether your Windows 95 is version OSR2 2.1, start Windows 95, select Start, Settings, Control Panel, then double-click the System icon. The System information is displayed. Your Windows 95 version should be 4.00.95.B or later.

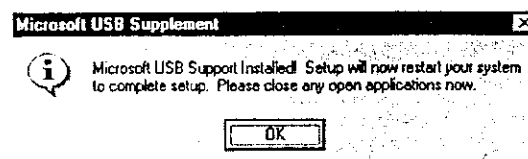


4. Load USB driver.

Insert Windows 95 CD-ROM into your CD-ROM drive. Locate the \other\usb directory, and run usbsupp.exe.



When completed, the USB driver is loaded in your Windows 95.



## 2. Install the scanner software

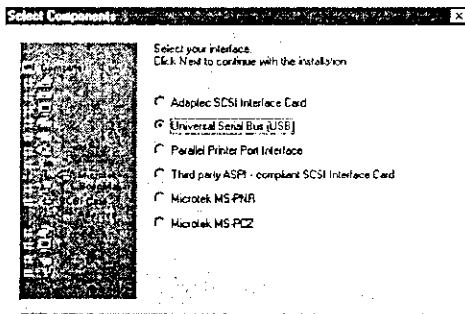
1. Insert the Microtek CD-ROM into your CD-ROM drive. The installer program should come up automatically and list available software programs for you.
2. Select the software you want to install, then click the **Install** button. The installer will set up these applications for you.

*Note: If the Microtek installer is not automatically displayed on the screen, click Start, select Run, type d:\edsetup.exe, and click OK; where d: is the drive letter for your CD-ROM. If your CD-ROM has a different drive letter than d:, you must substitute that drive letter for d:.*

### Install Microtek ScanWizard

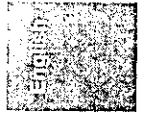
Microtek ScanWizard is the Twain driver used for the scanner to communicate with various applications. Microtek ScanWizard cannot be used by itself and requires another program in order to work.

1. Select the "Microtek ScanWizard" option, then follow the instructions on the screen to start the installation.
2. In the "Select Components", choose "Universal Serial Buss" option as your interface.

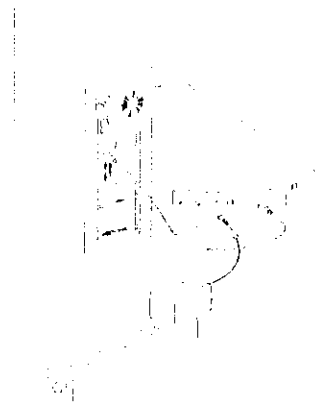


Carry out installation procedure, when complete, restart Windows 95.

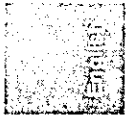
3. Connect 12VDC power connector to your SlimScan C3.



4. Connect USB connector to your PC, another end to your SlimScan C3.

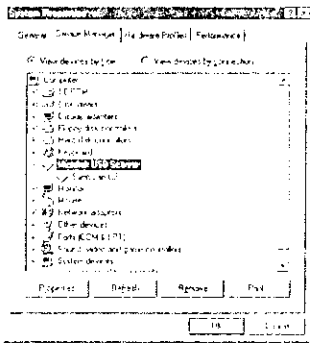


5. A message shows SlimScan C3 is detected.

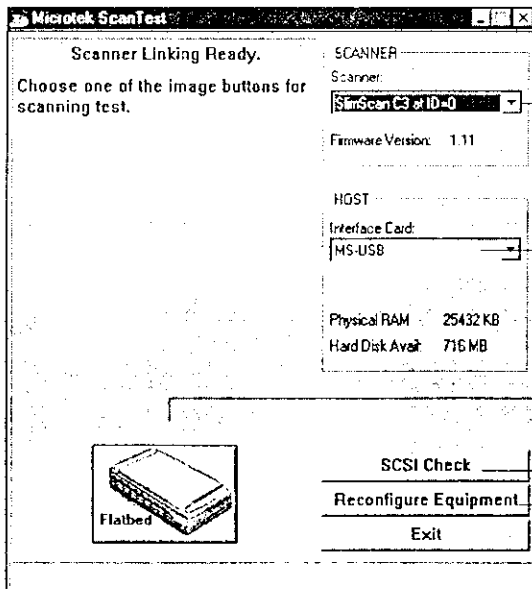


### 3. Test your scanner

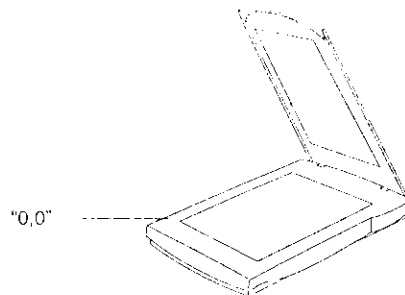
1. Restart Windows 95. Click Start, Settings, and select Control Panel.
2. Double-click on the System icon in Control Panel, then select Device Manager from the top.
3. Double-click on "Microtek USB Scanner", you can find "SlimScan C3" is listed. The scanner is ready to scan.



4. Start up Scanner Test from the Microtek ScanWizard for Windows 95 folder in the Programs menu. When started up successfully, the screen below appears.



5. Click the Flatbed button.
6. Place your document face down on the scanner glass. The top left corner of the document should be at the "0,0" position on the ruler guides running alongside the scanner.



7. A gray scale preview of your image will be displayed in the Microtek ScanTest window.
8. Close and exit Microtek ScanTest.
9. To scan the document, start up your software application to bring up the Microtek ScanWizard, click on the Scan button in the Preview window. The image will be scanned and delivered to your software application, where it can be saved as a file.

For more details on how to operate your scanner with Microtek ScanWizard, refer to the *Microtek ScanWizard Reference Manual* in your CD-ROM.

The detected scanner and its SCSI ID number.

The "MS-USB" means you are using USB interface.

The "Flatbed" button.

The SCSI Check feature acts as a SCSI probe to verify the location of your scanner and the scanner ID.

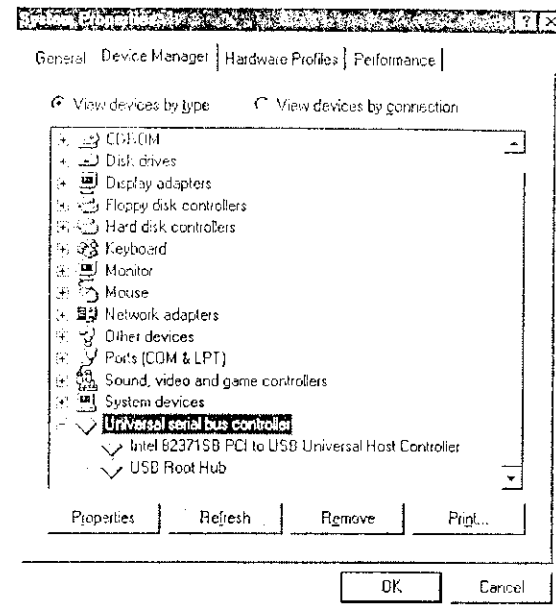
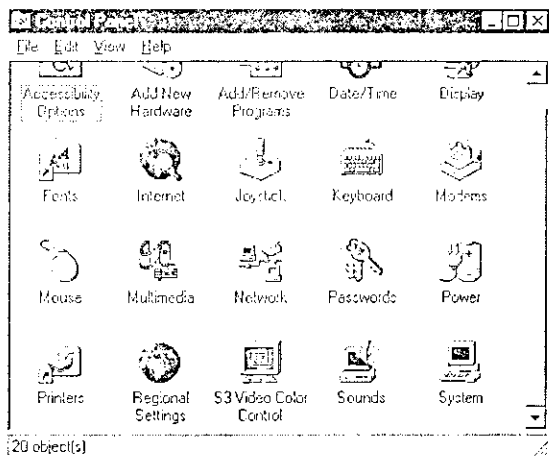
The Reconfigure Equipment feature allows the system to update its own internal reference file and is useful when you have changed your setup or reconfigured your system.

## Troubleshooting

If Windows 95 cannot detect USB device, follow the steps below:

1. If your computer dealer provides USB patch program for computer main board, run the program to enable USB features. Alternatively, you can download the patch program from computer manufacturer's web site.

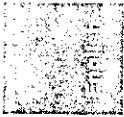
Restart Windows 95. Select Start, Settings, and Control Panel. Double-click the System icon.



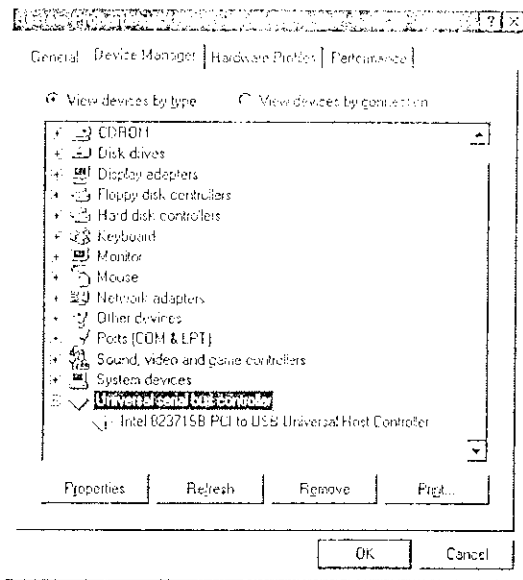
Restart Windows 95, your computer should be able to detect the presence of SlimScan C3 USB scanner.

The System Properties dialog box appears. Click the Device Manager tab.

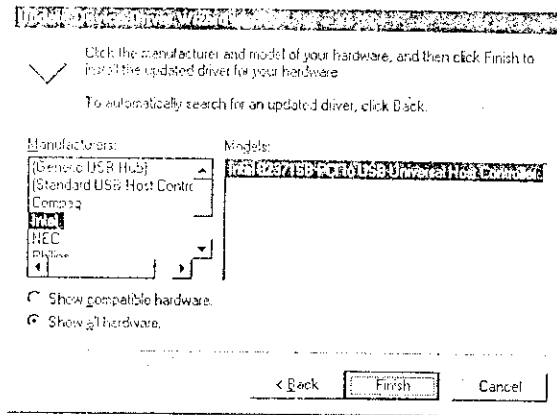
Double-click "Universal serial bus controller" to display two-line messages: "Intel 82371 PCI to USB Universal Host Controller" and "USB Root Hub".



2. If an yellow attention mark appears in front of the "Intel 82371 PCI to USB Universal Host Controller" string, this means the driver -- Intel 82371 driver is not automatically installed.



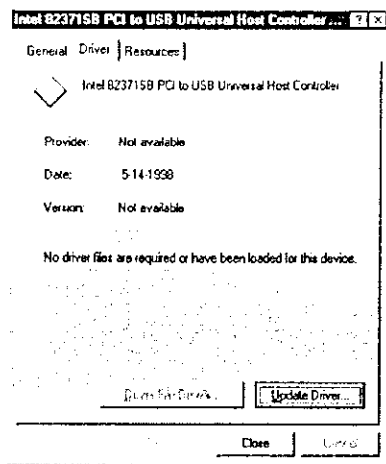
Click "Update Driver" to display the driver selection dialog box.

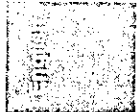


At the left column, select "Intel"; the message "Intel 82371 PCI to USB Universal Host Controller" will appear at the right column. Click Finish to exit.

Restart Windows 95, your computer should be able to detect the presence of SlimScan C3 USB scanner.

To fix the problem, double-click the "Universal serial bus controller" string to display the following dialog box.

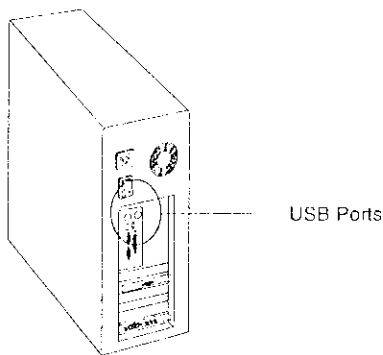




## 1. Verify the presence of USB

Turn on your computer and check to see if your computer is USB implemented.

Visually inspect the USB ports of your computer.



If you cannot find the USB ports at the back of your computer, read the documentation that came with your computer main board. If the USB connector is available, though unwired, you need to purchase an USB wire cable that connects one end to your main board, another end to the extension bracket.

**For computer main board with USB supported:** This is configured in your system BIOS. To enter BIOS settings and enable USB, see the documentation that came with your computer. Normally when the computer power is turned on, before starting Windows 98, the computer will hint you to press some keys for displaying BIOS menu.

**For computer main board without USB supported:** In this case, USB can be implemented by an USB add-on card. The BIOS settings for main board type USB are not required.

## 2. Connect the scanner to your computer

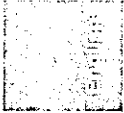
1. Connect 12VDC power connector to your SlimScan C3.



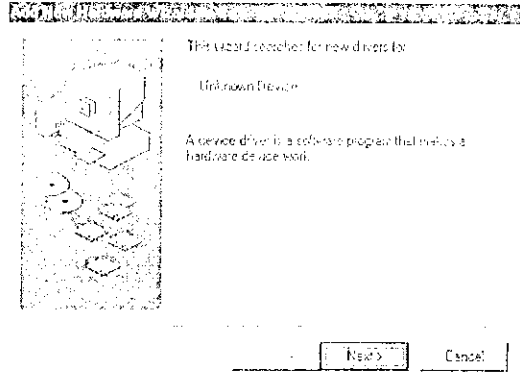
2. Connect USB connector to your PC, another end to your SlimScan C3.





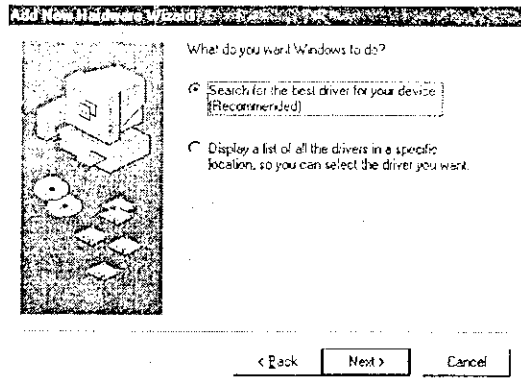


- An Unknown Device message appears, asking you to search a new device.



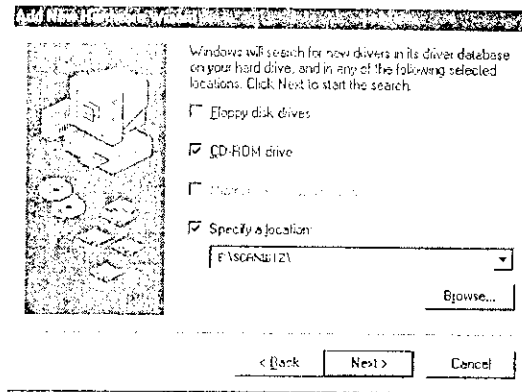
Click Next to continue.

- Click "Search for the best driver for your device (Recommended)." to start searching.



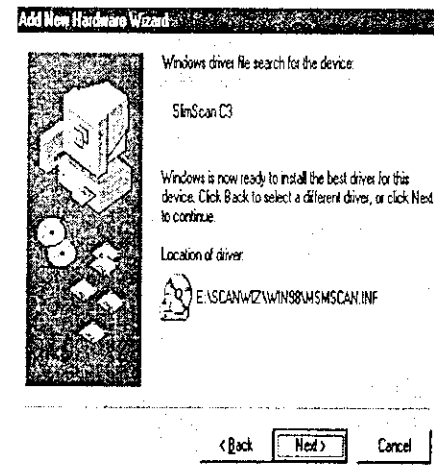
- Insert the Microtek CD-ROM into your CD-ROM drive.

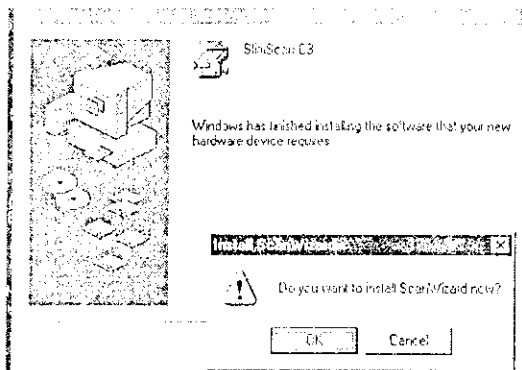
- From the 'Add New Hardware Wizard' dialog box, click "Next" to display the following screen.



On the above screen, D:\ indicates the default CD-ROM drive location. Click Browse if your CD-ROM drive is elsewhere. Click Next to continue.

- Your scanner is automatically detected. Click Next to continue.



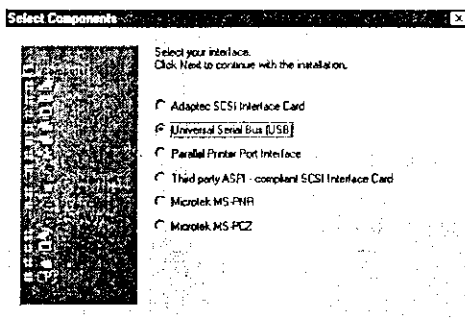


You are now ready to install ScanWizard driver program.

### Install Microtek ScanWizard

Microtek ScanWizard is the Twain driver used for the scanner to communicate with various applications. Microtek ScanWizard cannot be used by itself and requires another program in order to work.

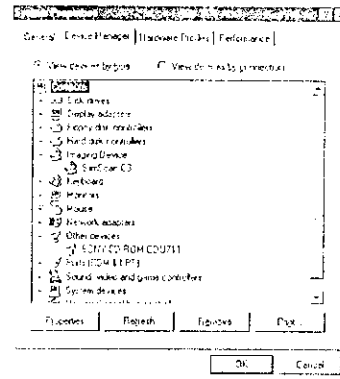
1. Select the "Microtek ScanWizard" option, then follow the instructions on the screen to start the installation.
2. In the "Select Components", choose "Universal Serial Buss" option as your interface.



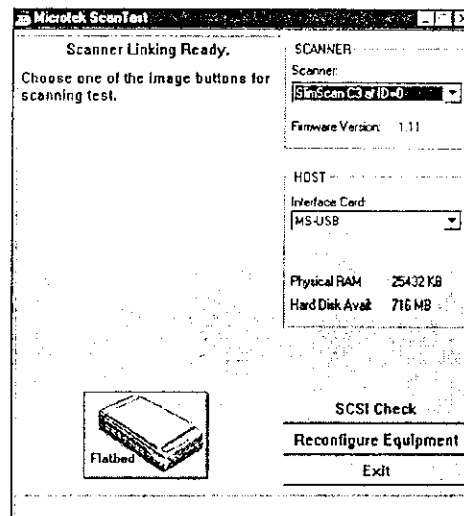
Carry out installation procedure, when complete, restart Windows 98.

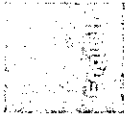
### 3. Test your scanner

1. Restart Windows 98. Click Start, Settings, and select Control Panel.
2. Double-click on the System icon in Control Panel, then select Device Manager from the top.
3. Double-click on "Microtek USB Scanner", you can find "SlimScan C3" is listed. The scanner is ready to scan.

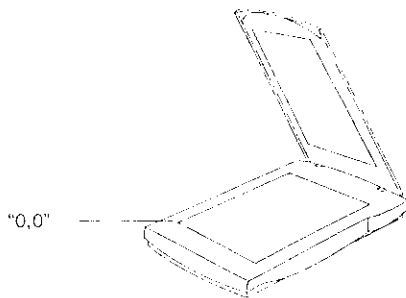


4. Start up Scanner Test from the Microtek ScanWizard for Windows 98 folder in the Programs menu. When started up successfully, the screen below appears.





5. Click the Flatbed button.
6. Place your document face down on the scanner glass. The top left corner of the document should be at the "0,0" position on the ruler guides running alongside the scanner.

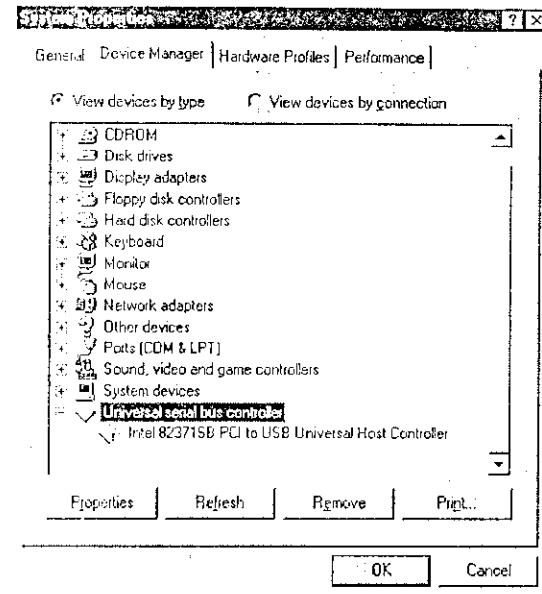


7. A preview of your image will be displayed in the Microtek ScanTest window.
8. Close and exit Microtek ScanTest.
9. To scan the document, start up your software application to bring up the Microtek ScanWizard, click on the Scan button in the Preview window. The image will be scanned and delivered to your software application, where it can be saved as a file.

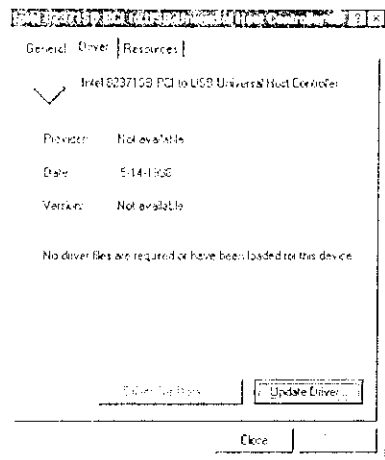
For more details on how to operate your scanner with Microtek ScanWizard, refer to the *Microtek ScanWizard Reference Manual* in your CD-ROM.

## Troubleshooting

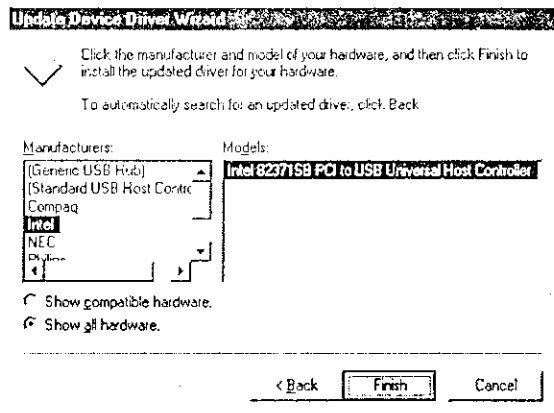
- If an yellow attention mark appears in front of the "Intel 82371 PCI to USB Universal Host Controller" string, this means the driver -- Intel 82371 driver is not automatically installed.



To fix the problem, double-click the "Universal serial bus controller" string to display the following dialog box.

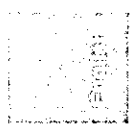
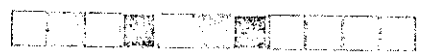


Click "Update Driver" to display the driver selection dialog box.



At the left column, select "Intel"; the message "Intel 82371 PCI to USB Universal Host Controller" will appear at the right column. Click Finish to exit.

Restart Windows 98, your computer should be able to detect the presence of SlimScan C3 USB scanner.



**Federal Communications Commission (FCC) Statement**

This equipment has been tested and found to comply with the limits for a Class B digital device, pursuant to Part 15 of the FCC Rules. These limits are designed to provide reasonable protection against harmful interference in a residential installation. This equipment generates, uses and can radiate radio frequency energy and, if not installed and used in accordance with the instructions, may cause harmful interference to radio communications. However, there is no guarantee that interference will not occur in a particular installation. If this equipment does cause harmful interference to radio or television reception, which can be determined by turning the equipment off and on, the user is encouraged to try to correct the interference by one or more of the following measures:

- Reorient/relocate the receiving antenna.
- Increase the separation between the equipment and receiver.
- Connect the equipment into an outlet on a circuit different from that to which the receiver is connected.
- Consult the dealer or an experienced radio/TV technician for help.

*Note: Shielded interface cable installed on scanner connector end must be used with this equipment.*

Trade Name	Model Name
SlimScan C3	MCS-600 U

**CAUTION**

Changes or modifications not expressly approved by the manufacturer responsible for compliance could void the user's authority to operate the equipment.

Handwritten text at the top right of the page, possibly a date or reference number.

## Specifications



Trade Name	SimScan C3
Model number	MCS-600U
Type	Desktop, Flatbed, Single pass
Resolution	300 dpi(H) x 600dpi(V)
Sample depth	12 bits per color with Dual Optimization Technology
Calibration time	3sec. (gray) 6sec. (color)
Scanning speed	in speed mode line/gray/color: 6.7 ms /line in quality mode line/gray/color: 20 ms /line  Preview: ≤18s, Letter size
Transmission speed	2Mbyte/s
Scanning Area	
Min.	1 line, 2 pixels (gray and color), 16 pixels (line-art)
Max.	215 mm x 295 mm (8.5" x 11.6")
Warm up time	15sec.
Power Supply	100 V to 120 V
Voltage Frequency	47 Hz to 63 Hz
Power Consumption	DC 12V/1A 12W max.
Dimensions	10.4" x 1.7" x 16.4"
Weight	3.5 lb.