

## EXHIBIT 4

### User Manual

# Connecting & Getting Started

## ScanMaker 3600

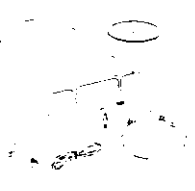
(for Windows 98)

Creación y conceptos básicos del escáner ScanMaker™ 3600  
(para Windows® 98)

Conexión e instalación en español de escáner ScanMaker™ 3600  
(para Windows® 98)

Conexão e conceitos básicos de trabalhar com o scanner ScanMaker™ 3600  
(Windows® 98)

# MICROTEK



### Unpack the Scanner and Check Components

- Microtek Scanner
- Power Adapter
- USB Cable
- Microtek CD-ROM

### Unpack the Scanner and Check Components

- Microtek Scanner
- Power Adapter
- USB Cable
- Microtek CD-ROM

### Unpack the Scanner and Check Components

- Microtek Scanner
- Power Adapter
- USB Cable
- Microtek CD-ROM

### Unpack the Scanner and Check Components

- Microtek Scanner
- Power Adapter
- USB Cable
- Microtek CD-ROM



### Install the Software

A. Insert the Microtek CD-ROM into your CD-ROM drive; the Microtek Software Installer program should come up automatically.

B. Click on each software program in the order that it appears on your screen to install all software components.

NOTE: If the Microtek Software Installer screen does not come up automatically, double-click "My Computer" on your Windows desktop, then double-click the CD-ROM icon to open it. Next, double-click the "Cdsetup" icon to start the installer program.

### Install the Software

A. Insert the Microtek CD-ROM into your CD-ROM drive; the Microtek Software Installer program should come up automatically.

B. Click on each software program in the order that it appears on your screen to install all software components.

NOTE: If the Microtek Software Installer screen does not come up automatically, double-click "My Computer" on your Windows desktop, then double-click the CD-ROM icon to open it. Next, double-click the "Cdsetup" icon to start the installer program.

### Install the Software

A. Insert the Microtek CD-ROM into your CD-ROM drive; the Microtek Software Installer program should come up automatically.

B. Click on each software program in the order that it appears on your screen to install all software components.

NOTE: If the Microtek Software Installer screen does not come up automatically, double-click "My Computer" on your Windows desktop, then double-click the CD-ROM icon to open it. Next, double-click the "Cdsetup" icon to start the installer program.

### Install the Software

A. Insert the Microtek CD-ROM into your CD-ROM drive; the Microtek Software Installer program should come up automatically.

B. Click on each software program in the order that it appears on your screen to install all software components.

NOTE: If the Microtek Software Installer screen does not come up automatically, double-click "My Computer" on your Windows desktop, then double-click the CD-ROM icon to open it. Next, double-click the "Cdsetup" icon to start the installer program.



### Connect the Power Adapter

- Connect the power adapter to your scanner.
- Plug the other end into a wall outlet or power source.

This will turn on the scanner. The green light on the front of the scanner will blink for a few seconds and then stay on solid.

### Connect the Power Adapter

- Connect the power adapter to your scanner.
- Plug the other end into a wall outlet or power source.

This will turn on the scanner. The green light on the front of the scanner will blink for a few seconds and then stay on solid.

### Connect the Power Adapter

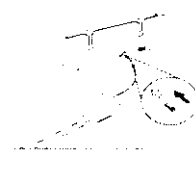
- Connect the power adapter to your scanner.
- Plug the other end into a wall outlet or power source.

This will turn on the scanner. The green light on the front of the scanner will blink for a few seconds and then stay on solid.

### Connect the Power Adapter

- Connect the power adapter to your scanner.
- Plug the other end into a wall outlet or power source.

This will turn on the scanner. The green light on the front of the scanner will blink for a few seconds and then stay on solid.



### Connect the USB Cable

- Connect one end of the USB cable to your PC.
- Connect the other end of the USB cable to the USB port on the scanner.

### Connect the USB Cable

- Connect one end of the USB cable to your PC.
- Connect the other end of the USB cable to the USB port on the scanner.

### Connect the USB Cable

- Connect one end of the USB cable to your PC.
- Connect the other end of the USB cable to the USB port on the scanner.

### Connect the USB Cable

- Connect one end of the USB cable to your PC.
- Connect the other end of the USB cable to the USB port on the scanner.



### Restart Your Computer

Restart your computer at the end of all software installation.

NOTE: Make sure the power switch is on before restarting your computer.

### Restart Your Computer

Restart your computer at the end of all software installation.

NOTE: Make sure the power switch is on before restarting your computer.

### Restart Your Computer

Restart your computer at the end of all software installation.

NOTE: Make sure the power switch is on before restarting your computer.

### Restart Your Computer

Restart your computer at the end of all software installation.

NOTE: Make sure the power switch is on before restarting your computer.

### Troubleshooting

For Troubleshooting information, consult Troubleshooting.pdf file on your CD, or visit <http://www.microtekusa.com>.

### Troubleshooting

For Troubleshooting information, consult Troubleshooting.pdf file on your CD, or visit <http://www.microtekusa.com>.

### Troubleshooting

For Troubleshooting information, consult Troubleshooting.pdf file on your CD, or visit <http://www.microtekusa.com>.

### Troubleshooting

For Troubleshooting information, consult Troubleshooting.pdf file on your CD, or visit <http://www.microtekusa.com>.

# Scanning with ScanWizard™ 5

## ScanMaker 3600

(for Windows® 98)

Digitizer con ScanWizard™ Easy  
(para Windows® 98)

Assistente para ScanWizard™ Easy  
(para Windows® 98)

Digitizzatore con ScanWizard™ Easy  
(Windows® 98)

# MICROTEK

# 1

### Place the document

- Place the document faced down on the scanner glass.
- The top of the page should be towards the front of the scanner.

# 2

### Launch ScanWizard 5

- Launching ScanWizard 5 as stand-alone program
- Click Start, Programs, Microtek ScanWizard 5 for Windows, then ScanWizard 5.

- Launching ScanWizard 5 from Ulead PhotoImpact

- In Windows, click Start, Programs, Ulead PhotoImpact 4.x, then PhotoImpact.
- When the program starts, go to the File menu, choose Scanner, then choose Select Source from the submenu.
- When a dialog box comes up, select "Microtek ScanWizard 5".
- Go back to the File menu, choose the Scanner again, and this time choose Microtek ScanWizard 5 from the submenu.

**NOTE** When ScanWizard 5 is launched, it automatically performs a pre-scan on the material and place it in the preview area.

# 3

### Make Image Settings

**Original** – defines category of the original (scan material).

**Scan Type** – selects output image type (color, gray, or B&W).

**Purpose** – defines image resolution to match your target application.

**Scale Output** – selects a size (in aspect ratio) for the output image.

**Advance** – for image enhancement tools.

**Reset** – cancels your defined choices and revert to default settings.

# 4

### Start to Scan, Save, E-mail, or Print

- If you launch ScanWizard 5 as stand-alone program, click it for:

**Scan to** – saves scanned image to a file, or open it in an image-editing software.

**Copy** – sends scanned image directly to your printer.

**E-mail** – sends image file as attachment to e-mails.

- If you launch ScanWizard 5 under an Application, click "Scan" for:

**Scan** – scans material and deliver output image to the application for further editing.

### Troubleshooting

For more information on how to use your scanner with ScanWizard 5:

- Click "Manual" check box that corresponds to Microtek ScanWizard 5 on your CD.

- Access on-line help by clicking on the Help (?) button of the ScanWizard 5 - Standard Control Panel window. Then choose "Help" from resulting menu.

### Place the document

- Place the document faced down on the scanner glass.
- The top of the page should be towards the front of the scanner.

### Launch ScanWizard 5

- Launching ScanWizard 5 as stand-alone program
- Click Start, Programs, Microtek ScanWizard 5 for Windows, then ScanWizard 5.

- Launching ScanWizard 5 from Ulead PhotoImpact

- In Windows, click Start, Programs, Ulead PhotoImpact 4.x, then PhotoImpact.
- When the program starts, go to the File menu, choose Scanner, then choose Select Source from the submenu.
- When a dialog box comes up, select "Microtek ScanWizard 5".
- Go back to the File menu, choose the Scanner again, and this time choose Microtek ScanWizard 5 from the submenu.

**NOTE** When ScanWizard 5 is launched, it automatically performs a pre-scan on the material and place it in the preview area.

### Make Image Settings

**Original** – defines category of the original (scan material).

**Scan Type** – selects output image type (color, gray, or B&W).

**Purpose** – defines image resolution to match your target application.

**Scale Output** – selects a size (in aspect ratio) for the output image.

**Advance** – for image enhancement tools.

**Reset** – cancels your defined choices and revert to default settings.

### Start to Scan, Save, E-mail, or Print

- If you launch ScanWizard 5 as stand-alone program, click it for:

**Scan to** – saves scanned image to a file, or open it in an image-editing software.

**Copy** – sends scanned image directly to your printer.

**E-mail** – sends image file as attachment to e-mails.

- If you launch ScanWizard 5 under an Application, click "Scan" for:

**Scan** – scans material and deliver output image to the application for further editing.

### Troubleshooting

For more information on how to use your scanner with ScanWizard 5:

- Click "Manual" check box that corresponds to Microtek ScanWizard 5 on your CD.

- Access on-line help by clicking on the Help (?) button of the ScanWizard 5 - Standard Control Panel window. Then choose "Help" from resulting menu.

### Place the document

- Place the document faced down on the scanner glass.
- The top of the page should be towards the front of the scanner.

### Launch ScanWizard 5

- Launching ScanWizard 5 as stand-alone program
- Click Start, Programs, Microtek ScanWizard 5 for Windows, then ScanWizard 5.

- Launching ScanWizard 5 from Ulead PhotoImpact

- In Windows, click Start, Programs, Ulead PhotoImpact 4.x, then PhotoImpact.
- When the program starts, go to the File menu, choose Scanner, then choose Select Source from the submenu.
- When a dialog box comes up, select "Microtek ScanWizard 5".
- Go back to the File menu, choose the Scanner again, and this time choose Microtek ScanWizard 5 from the submenu.

**NOTE** When ScanWizard 5 is launched, it automatically performs a pre-scan on the material and place it in the preview area.

### Make Image Settings

**Original** – defines category of the original (scan material).

**Scan Type** – selects output image type (color, gray, or B&W).

**Purpose** – defines image resolution to match your target application.

**Scale Output** – selects a size (in aspect ratio) for the output image.

**Advance** – for image enhancement tools.

**Reset** – cancels your defined choices and revert to default settings.

### Start to Scan, Save, E-mail, or Print

- If you launch ScanWizard 5 as stand-alone program, click it for:

**Scan to** – saves scanned image to a file, or open it in an image-editing software.

**Copy** – sends scanned image directly to your printer.

**E-mail** – sends image file as attachment to e-mails.

- If you launch ScanWizard 5 under an Application, click "Scan" for:

**Scan** – scans material and deliver output image to the application for further editing.

### Troubleshooting

For more information on how to use your scanner with ScanWizard 5:

- Click "Manual" check box that corresponds to Microtek ScanWizard 5 on your CD.

- Access on-line help by clicking on the Help (?) button of the ScanWizard 5 - Standard Control Panel window. Then choose "Help" from resulting menu.

### Place the document

- Place the document faced down on the scanner glass.
- The top of the page should be towards the front of the scanner.

### Launch ScanWizard 5

- Launching ScanWizard 5 as stand-alone program
- Click Start, Programs, Microtek ScanWizard 5 for Windows, then ScanWizard 5.

- Launching ScanWizard 5 from Ulead PhotoImpact

- In Windows, click Start, Programs, Ulead PhotoImpact 4.x, then PhotoImpact.
- When the program starts, go to the File menu, choose Scanner, then choose Select Source from the submenu.
- When a dialog box comes up, select "Microtek ScanWizard 5".
- Go back to the File menu, choose the Scanner again, and this time choose Microtek ScanWizard 5 from the submenu.

**NOTE** When ScanWizard 5 is launched, it automatically performs a pre-scan on the material and place it in the preview area.

### Make Image Settings

**Original** – defines category of the original (scan material).

**Scan Type** – selects output image type (color, gray, or B&W).

**Purpose** – defines image resolution to match your target application.

**Scale Output** – selects a size (in aspect ratio) for the output image.

**Advance** – for image enhancement tools.

**Reset** – cancels your defined choices and revert to default settings.

### Start to Scan, Save, E-mail, or Print

- If you launch ScanWizard 5 as stand-alone program, click it for:

**Scan to** – saves scanned image to a file, or open it in an image-editing software.

**Copy** – sends scanned image directly to your printer.

**E-mail** – sends image file as attachment to e-mails.

- If you launch ScanWizard 5 under an Application, click "Scan" for:

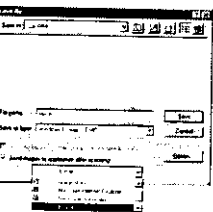
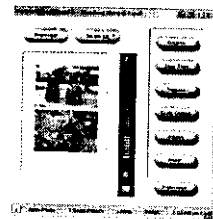
**Scan** – scans material and deliver output image to the application for further editing.

### Troubleshooting

For more information on how to use your scanner with ScanWizard 5:

- Click "Manual" check box that corresponds to Microtek ScanWizard 5 on your CD.

- Access on-line help by clicking on the Help (?) button of the ScanWizard 5 - Standard Control Panel window. Then choose "Help" from resulting menu.



**QTK99-F023**  
**Microtek International Inc.**  
**Flatbed Image Scanner, Model MRS-1200G6U**  
**FCC ID: EF9MRS-1200G6U**

**Instruction Manual**  
**Federal Communication Commission Interference Statement**

This equipment has been tested and found to comply with the limits for a Class B digital device, pursuant to Part 15 of the FCC Rules. These limits are designed to provide reasonable protection against harmful interference in a residential installation. This equipment generates, uses and can radiate radio frequency energy and, if not installed and used in accordance with the instructions, may cause harmful interference to radio communications. However, there is no guarantee that interference will not occur in a particular installation. If this equipment does cause harmful interference to radio or television reception, which can be determined by turning the equipment off and on, the user is encouraged to try to correct the interference by one of the following measures:

- Reorient or relocate the receiving antenna.
- Increase the separation between the equipment and receiver.
- Connect the equipment into an outlet on a circuit different from that to which the receiver is connected.
- Consult the dealer or an experienced radio/TV technician for help.

**FCC Caution:** To assure continued compliance, use only shielded interface cable when connecting to computer. Any changes or modifications not expressly approved by the party responsible for compliance could void the user's authority to operate this equipment.

**MICROTEK****Confidential****RDC Development Schedule**

DVT: 7/22 ~ 8/11

Engineering samples: 8/10

DMT: 7/29 ~ 8/25

Pilot Run (100 units): 8/26

MP: 9/13

Please visit Corporate Marketing web page, <http://cm.microtek.com.tw/>, every week to have dynamically updated schedule.

**Specifications**

Item	Spec.
Project Code	YG 6U (ID #1)
Product Name	ScanMaker 3600 (tentative)
Basic Specifications	
Resolution	600 dpi × 1200 dpi, maximum 9600 dpi
Color Depth	36 bits (42-bit DOT by using M011)
Scanning Area	8.5" × 11.7"
Interface	USB
Engine Speed	15 ms/line @ color; 5 ms/line @ gray
Preview Speed	≤ 7 seconds @ A4 size (without calibration)
Dimension (W×H×L)	11.4" × 4.5" × 18.1" (290mm × 114mm × 460mm)
Net Weight	Approximate 6.6 lbs. (3 Kg)
Power Consumption	18.75 W maximum
Target List Price	US \$99 ~ US \$129 (TBD)
Delivery Schedule (to market)	October, 1999
Models To Be Replaced	ScanMaker X6, V636
Bundled Software	ScanWizard EZ PhotoImpact 4.2 PhotoDeluxe 2.0 OPLÉ
Features	For family/personal users External power adapter w/ power switch on back plate LightLid 35 supported Does not support ADF-L, LightLid 45 and MTMA
Note	ASIC: M011 – 36 bits, 42-bit DOT. CCD: 7um Calibration time: 4 sec./3 colors